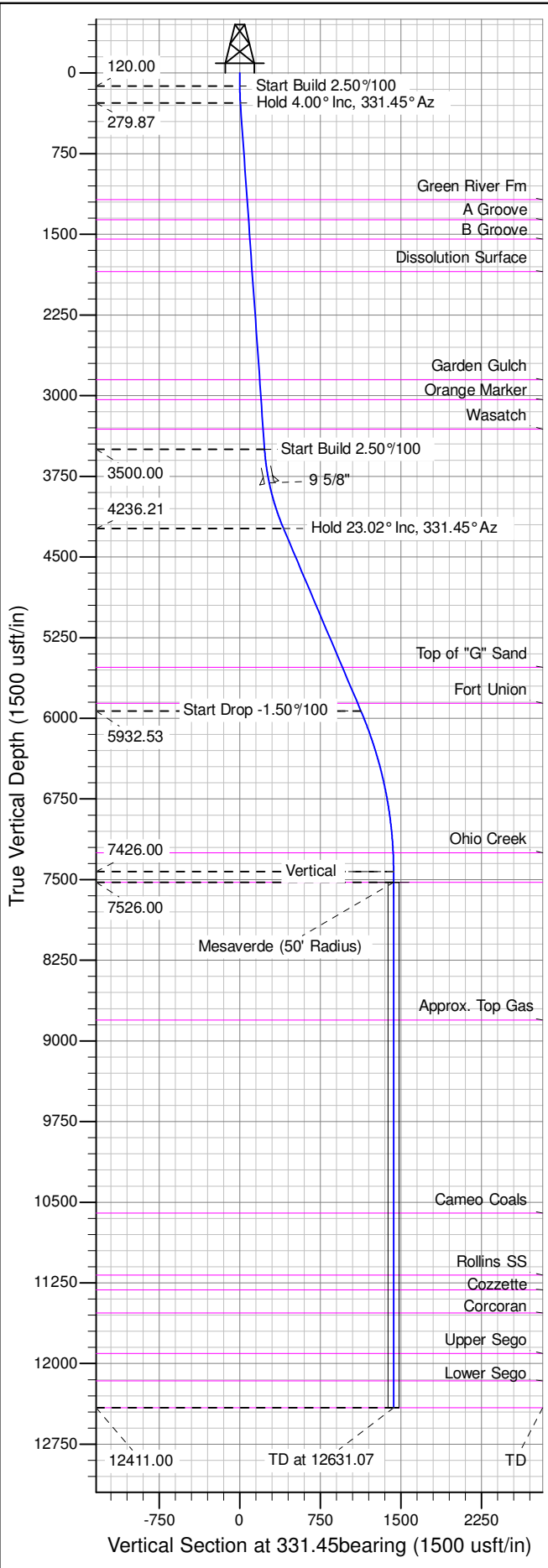
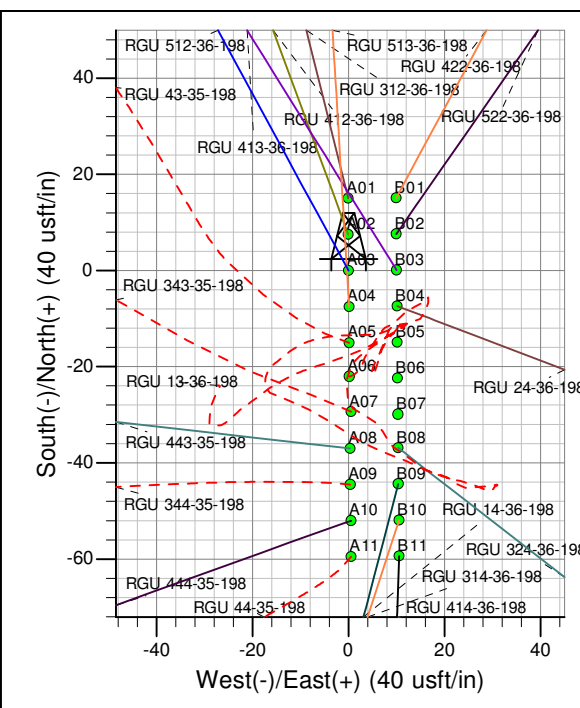
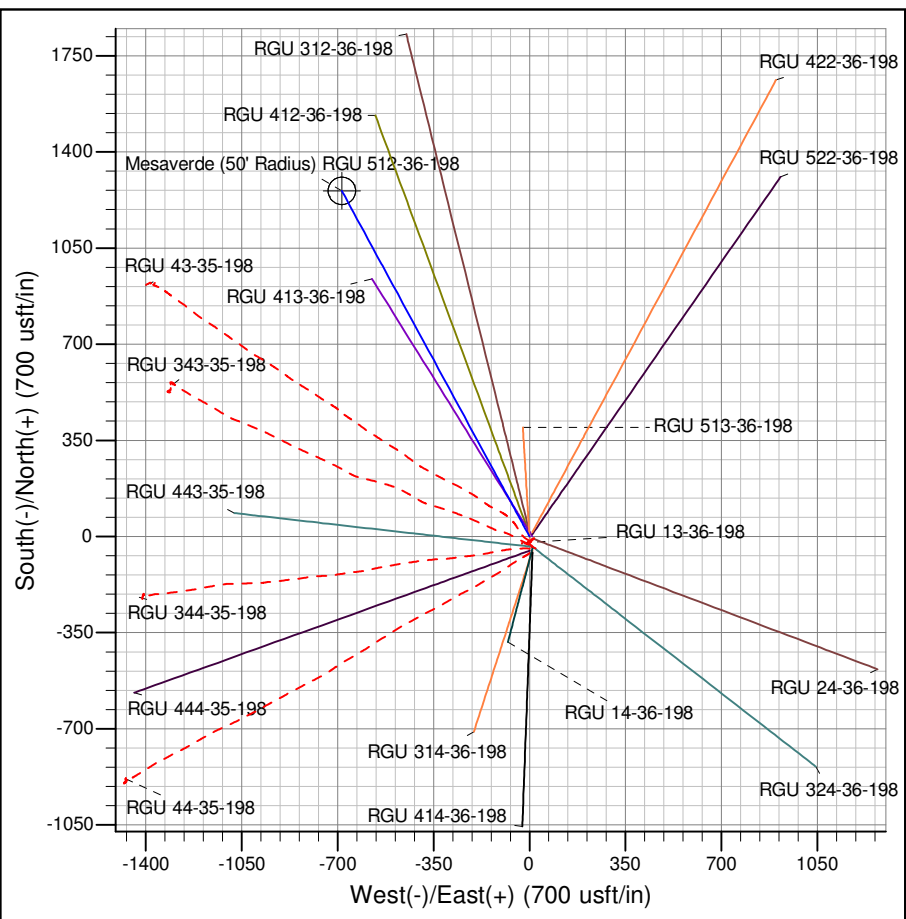




Well Name: RGU 512-36-198
Surface Location: RGU 13-36-198 Pad
North American Datum 1983 , US State Plane 1983 , Colorado Central Zone
Ground Elevation: 6680.00
+N/-S +E/-W Northing Easting Latitude Longitude Slot
0.00 0.00 1771348.90 2201047.30 39.916778 -108.348648 A03
KELLY BUSHING @ 6706.00usft (Cyclone 29 (26' RKB) mab)



ANNOTATIONS									
TVD	MD	Inc	Azi	+N/-S	+E/-W	Vsect	Departure	Annotation	
120.00	120.00	0.00	0.00	0.00	0.00	0.00	0.00	0.00	Start Build 2.50°/100
279.87	280.00	4.00	331.45	4.90	-2.67	5.58	5.58	5.58	Hold 4.00° Inc, 331.45° Az
3500.00	3507.99	4.00	331.45	202.70	-110.28	230.76	230.76	230.76	Start Build 2.50°/100
4236.21	4268.64	23.02	331.45	358.05	-194.81	407.61	407.61	407.61	Hold 23.02° Inc, 331.45° Az
5932.53	6111.67	23.02	331.45	991.02	-539.23	1128.22	1128.22	1128.22	Start Drop -1.50°/100
7426.00	7646.07	0.00	0.00	1258.11	-684.56	1432.29	1432.29	1432.29	Vertical
7526.00	7746.07	0.00	0.00	1258.11	-684.56	1432.29	1432.29	1432.29	Mesaverde
12411.00	12631.07	0.00	0.00	1258.11	-684.56	1432.29	1432.29	1432.29	TD at 12631.07



Azimuths to True North
Magnetic North: 10.14°

Magnetic Field
Strength: 52098.0snT
Dip Angle: 65.93°
Date: 9/18/2014
Model: IGRF2010

Project: RG 36-01S-098W
Site: RGU 13-36-198 Pad
Well: RGU 512-36-198
Design #1 18Sep14 mab