



7136 South Yale Avenue, Suite 414
Tulsa, Oklahoma 74136-6378

phone 918.925.9739

fax 866.534.4559

WWW.HZMUD.COM/25

Customer Information

Operator: Noble Energy Inc
1625 Broadway
Suite 2200
Denver, Colorado 80202

Geologist: Holly Duncan
Noble Energy Inc.

Mud Logging Details

Logger: Tom Wacholz & Scott Haney

Log Interval: 7020' MD to 16600' MD

Start Date: September 14, 2014

Release Date: September 19, 2014

Well Information

Well Name: Coalview G02-66-1HN
Horizontal

Location: 1-T4N-R65W
2629' FSL, 351' FEL

County: Weld
State: Colorado

Drilling Rig: H&P 343

Total Depth: 16600' MD

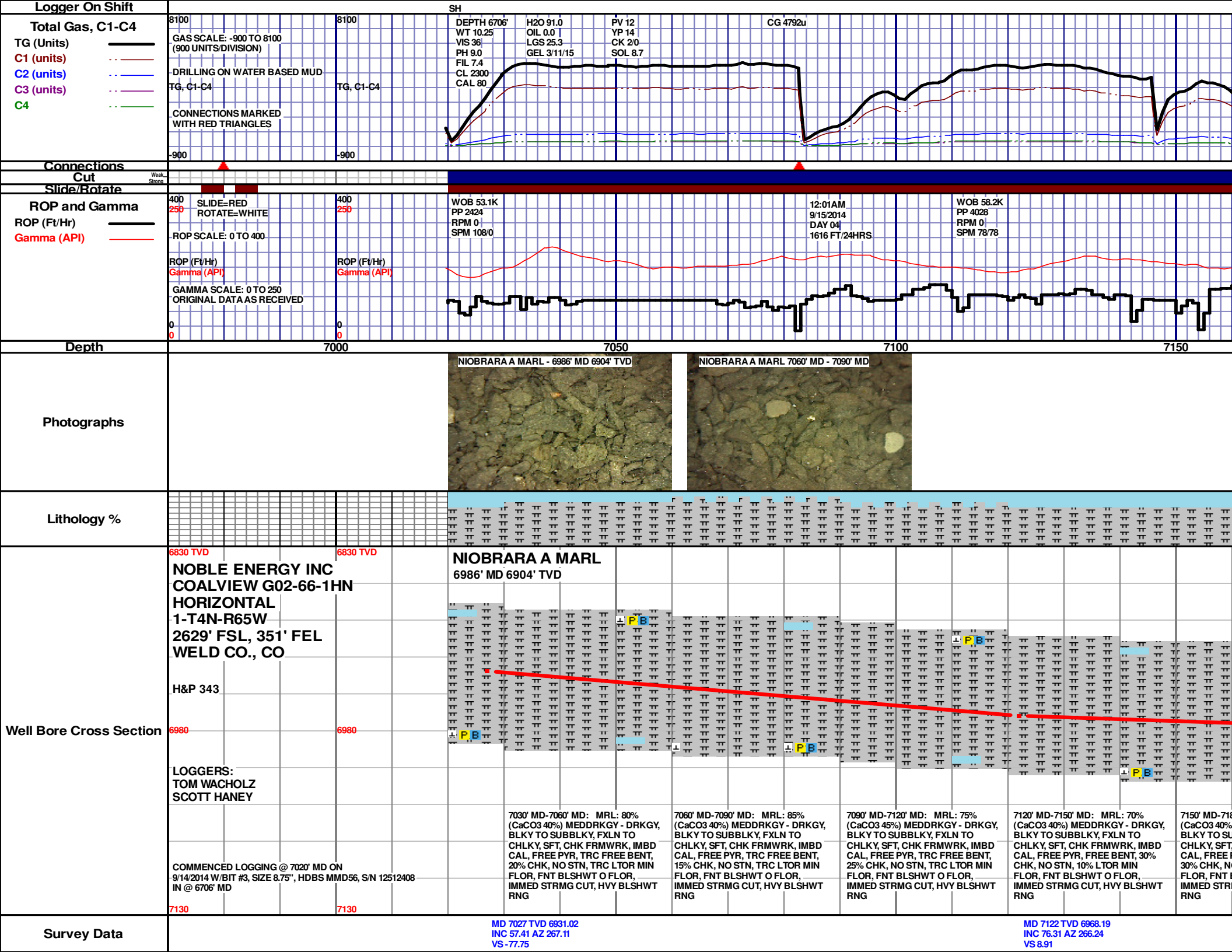
TD Date: September 19, 2014

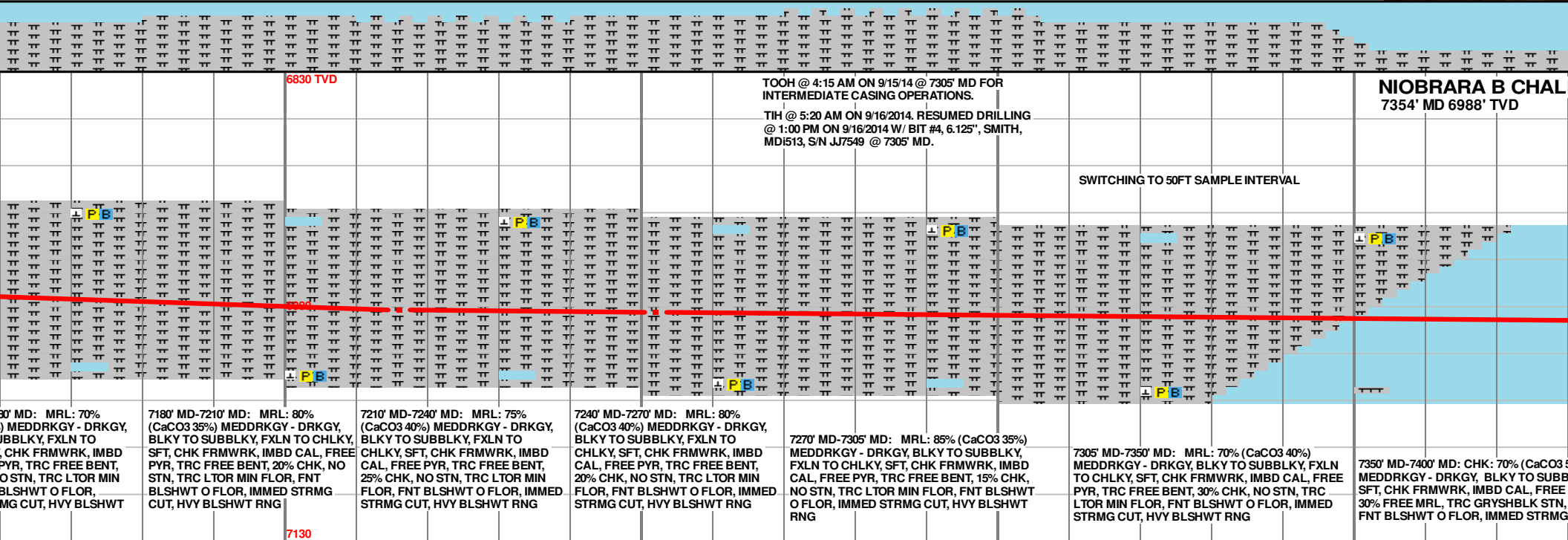
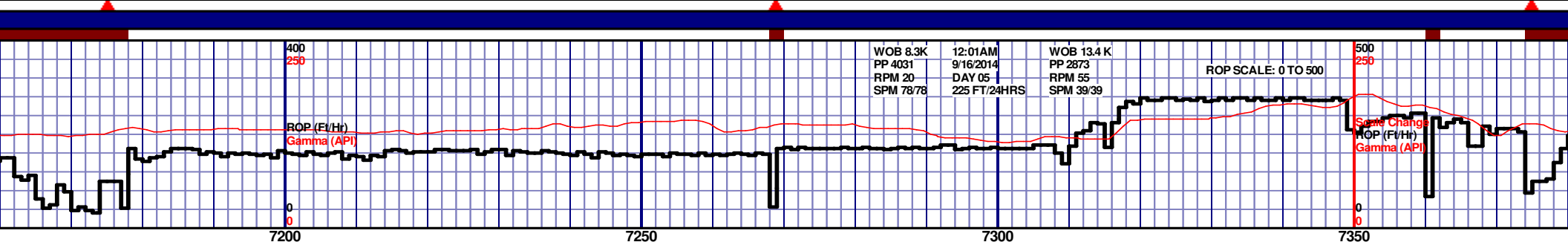
Formation: Niobrara B Chalk

KB Elevation: 4852'

GR Elevation: 4828'

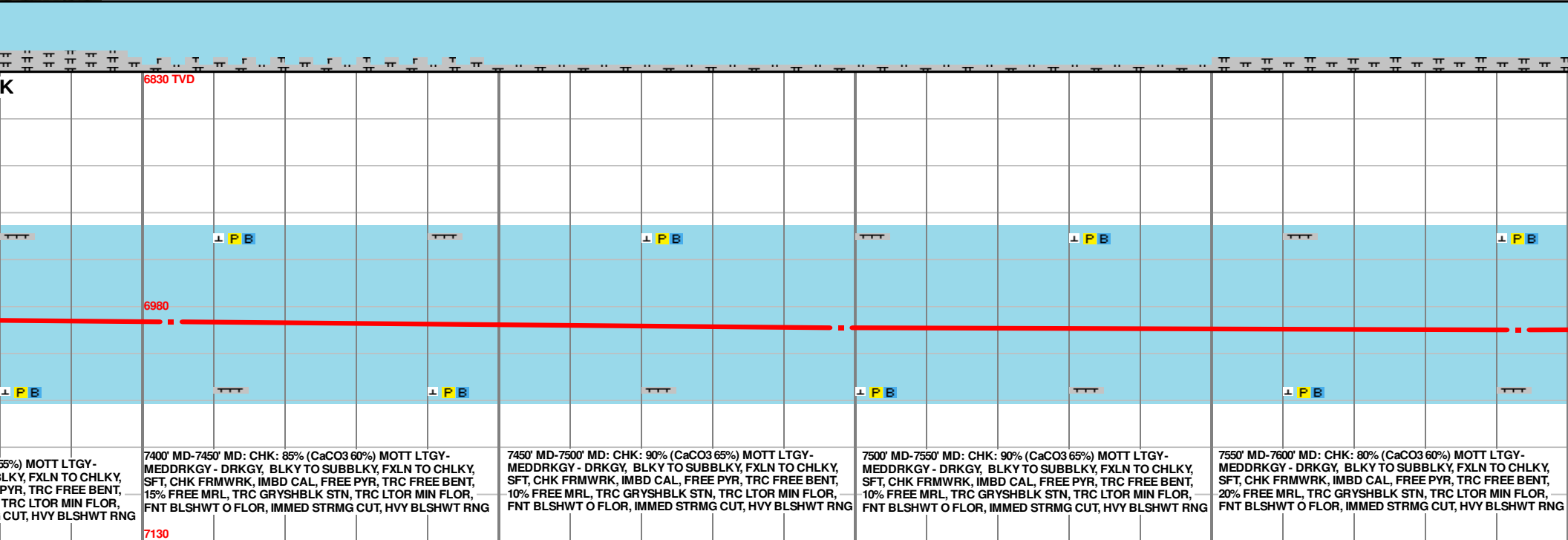
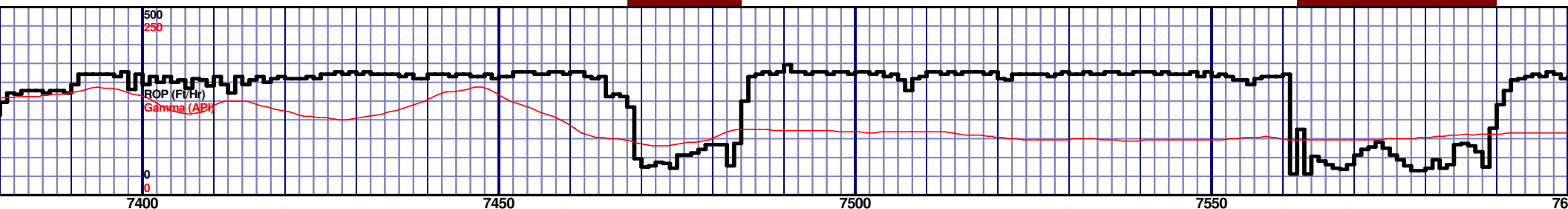
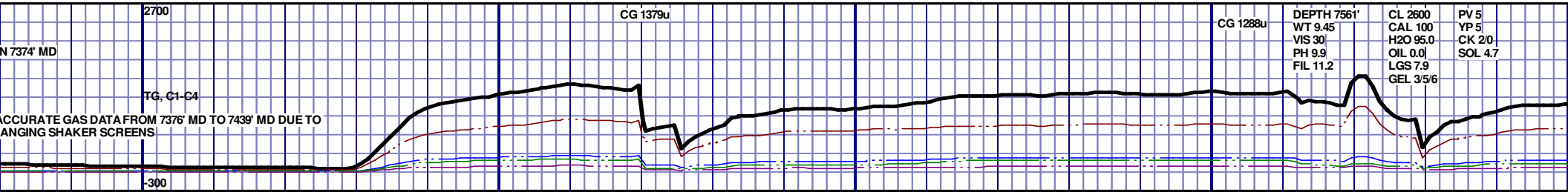
API Number: 05-123-39921-0000





30' MD: MRL: 70% MEDDRKGY - DRKGY, SUBLBKY, FXLN TO CHK FRMWKR, IMBD PYR, TRC FREE BENT, O STN, TRC LTOR MIN BLSHWT O FLOR, IMMG CUT, HVY BLSHWT	7180' MD-7210' MD: MRL: 80% (CaCO3 35%) MEDDRKGY - DRKGY, BLKY TO SUBLBKY, FXLN TO CHLKY, SFT, CHK FRMWKR, IMBD CAL, FREE PYR, TRC FREE BENT, 20% CHK, NO STN, TRC LTOR MIN FLOR, FNT BLSHWT O FLOR, IMMED STRMG CUT, HVY BLSHWT RNG	7210' MD-7240' MD: MRL: 75% (CaCO3 40%) MEDDRKGY - DRKGY, BLKY TO SUBLBKY, FXLN TO CHLKY, SFT, CHK FRMWKR, IMBD CAL, FREE PYR, TRC FREE BENT, 25% CHK, NO STN, TRC LTOR MIN FLOR, FNT BLSHWT O FLOR, IMMED STRMG CUT, HVY BLSHWT RNG	7240' MD-7270' MD: MRL: 80% (CaCO3 40%) MEDDRKGY - DRKGY, BLKY TO SUBLBKY, FXLN TO CHLKY, SFT, CHK FRMWKR, IMBD CAL, FREE PYR, TRC FREE BENT, 20% CHK, NO STN, TRC LTOR MIN FLOR, FNT BLSHWT O FLOR, IMMED STRMG CUT, HVY BLSHWT RNG	7270' MD-7305' MD: MRL: 85% (CaCO3 35%) MEDDRKGY - DRKGY, BLKY TO SUBLBKY, FXLN TO CHLKY, SFT, CHK FRMWKR, IMBD CAL, FREE PYR, TRC FREE BENT, 15% CHK, NO STN, TRC LTOR MIN FLOR, FNT BLSHWT O FLOR, IMMED STRMG CUT, HVY BLSHWT RNG	7305' MD-7350' MD: MRL: 70% (CaCO3 40%) MEDDRKGY - DRKGY, BLKY TO SUBLBKY, FXLN TO CHLKY, SFT, CHK FRMWKR, IMBD CAL, FREE PYR, TRC FREE BENT, 30% CHK, NO STN, TRC LTOR MIN FLOR, FNT BLSHWT O FLOR, IMMED STRMG CUT, HVY BLSHWT RNG	7350' MD-7400' MD: CHK: 70% (CaCO3 35%) MEDDRKGY - DRKGY, BLKY TO SUBLBKY, SFT, CHK FRMWKR, IMBD CAL, FREE 30% FREE MRL, TRC GRYSHLK STN, FNT BLSHWT O FLOR, IMMED STRMG
---	---	---	---	--	---	--

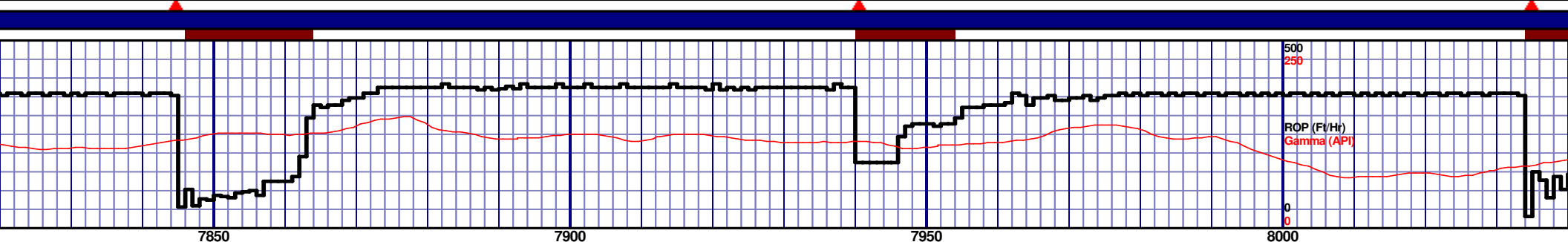
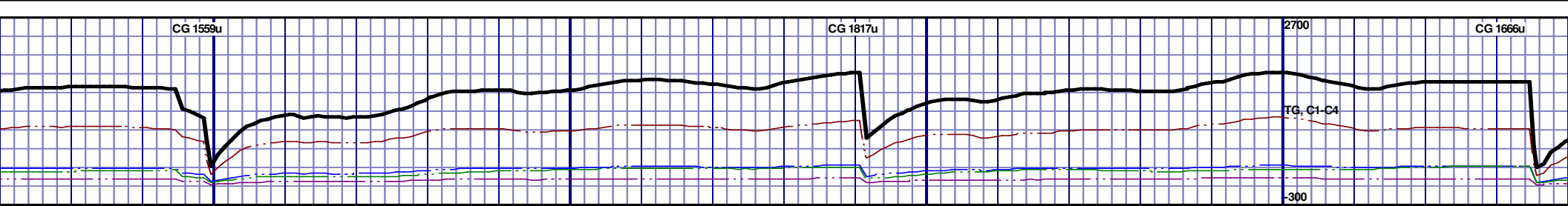
MD 7252 TVD 6983.82
INC 87.47 AZ 266.91
VS 137.31



MD 7404 TVD 6990.04
INC 87.84 AZ 266.15
VS 288.48

MD 7498 TVD 6993.38
INC 88.09 AZ 266.03
VS 382.01

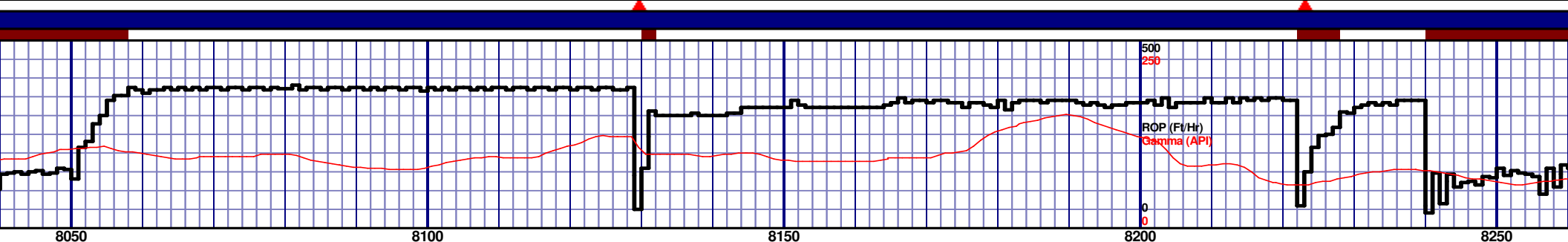
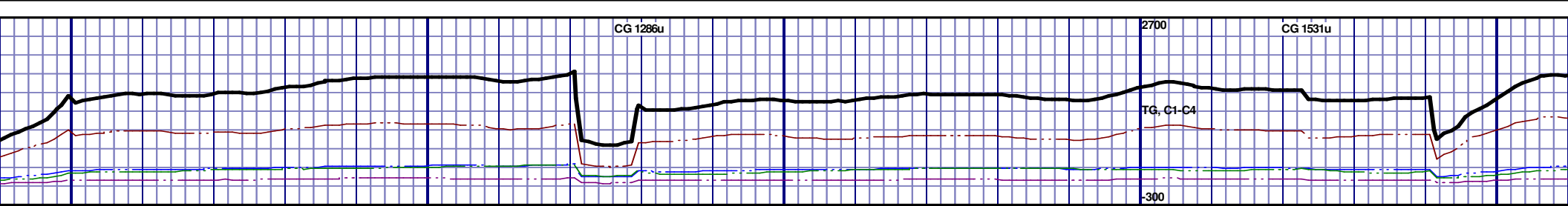
MD 7593
INC 90.3
VS 476.3



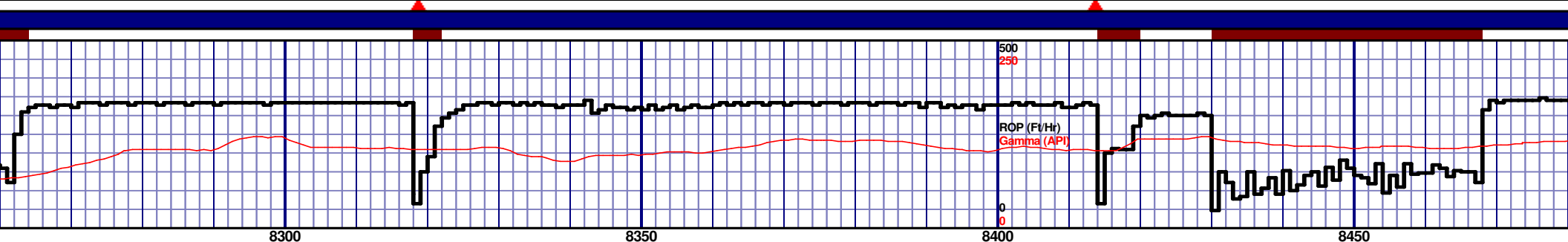
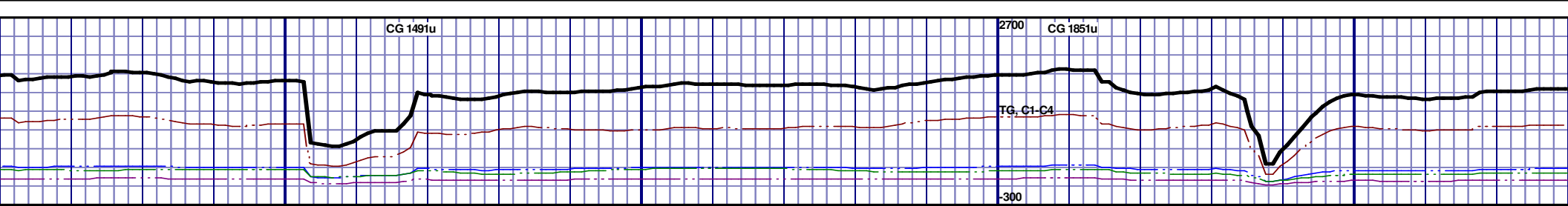
7850' MD-7900' MD: CHK: 60% (CaCO3 55%) MOTT LTGY-MEDDRKGY - DRKGY, BLKY TO SUBBLKY, FXLN TO CHLKY, SFT, CHK FRMWRK, IMBD CAL, FREE PYR, TRC FREE BENT, 40% FREE MRL, TRC GRYSBLK STN, TRC LTOR MIN FLOR, FNT BLSHWT O FLOR, IMMED STRMG CUT, HVY BLSHWT RNG									
7900' MD-7950' MD: CHK: 70% (CaCO3 60%) MOTT LTGY-MEDDRKGY - DRKGY, BLKY TO SUBBLKY, FXLN TO CHLKY, SFT, CHK FRMWRK, IMBD CAL, FREE PYR, TRC FREE BENT, 30% FREE MRL, TRC GRYSBLK STN, TRC LTOR MIN FLOR, FNT BLSHWT O FLOR, IMMED STRMG CUT, HVY BLSHWT RNG									
7950' MD-8000' MD: CHK: 60% (CaCO3 55%) MOTT LTGY-MEDDRKGY - DRKGY, BLKY TO SUBBLKY, FXLN TO CHLKY, SFT, CHK FRMWRK, IMBD CAL, FREE PYR, TRC FREE BENT, 40% FREE MRL, TRC GRYSBLK STN, TRC LTOR MIN FLOR, FNT BLSHWT O FLOR, IMMED STRMG CUT, HVY BLSHWT RNG									
8000' MD-8050' MD: CHK: 80% (CaCO3 65%) MOTT LTGY-MEDDRKGY - DRKGY, BLKY TO SUBBLKY, FXLN TO CHLKY, SFT, CHK FRMWRK, IMBD CAL, FREE PYR, TRC FREE BENT, 20% FREE MRL, TRC GRYSBLK STN, TRC LTOR MIN FLOR, FNT BLSHWT O FLOR, IMMED STRMG CUT, HVY BLSHWT RNG									

MD 7876 TVD 6991.52
INC 89.75 AZ 270.41
VS 759.12

MD 7970 TVD 6991.11
INC 90.74 AZ 269.74
VS 853.1



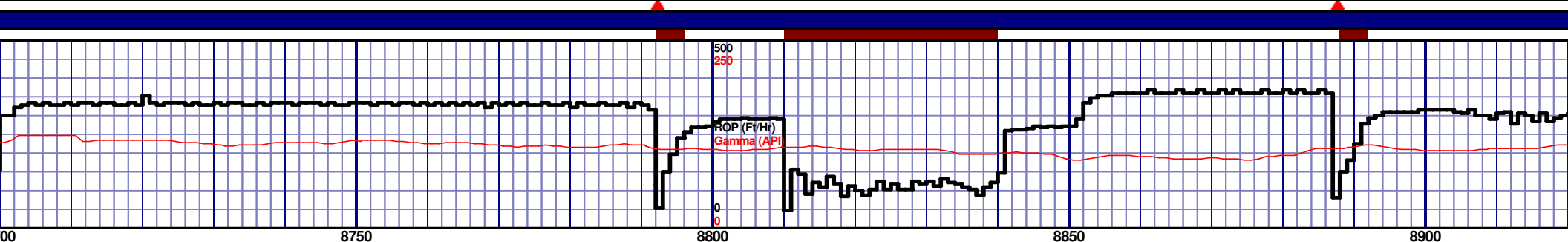
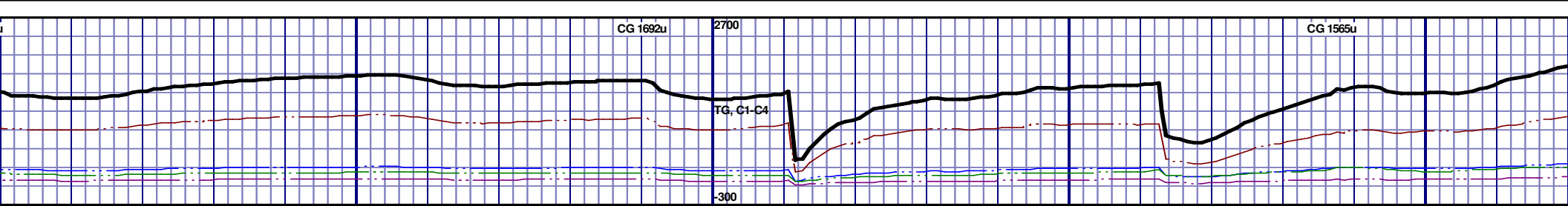
										6830 TVD										NIOBRARA C CHALK 8221' MD 6988' TVD FAULT EXPECTED AT ~7360' MD CAME IN AT ~8221' MD									



6830 TVD									
6980									
7130									
8300' MD-8350' MD: CHK: 65% (CaCO3 55%) MOTT LTGY-MEDDRKGY - DRKGY, BLKY TO SUBBLKY, FXLN TO CHLKY, SFT, CHK FRMWRK, IMBD CAL, FREE PYR, 35% FREE MRL, TRC GRYSBLK STN, NO FLOR, FNT BLSHWT O FLOR, IMMED STRMG CUT, HVY BLSHWT RNG									
8350' MD-8400' MD: CHK: 60% (CaCO3 55%) MOTT LTGY-MEDDRKGY - DRKGY, BLKY TO SUBBLKY, FXLN TO CHLKY, SFT, CHK FRMWRK, IMBD CAL, FREE PYR, 40% FREE MRL, TRC GRYSBLK STN, NO FLOR, FNT BLSHWT O FLOR, IMMED STRMG CUT, HVY BLSHWT RNG									
8400' MD-8450' MD: CHK: 60% (CaCO3 55%) MOTT LTGY-MEDDRKGY - DRKGY, BLKY TO SUBBLKY, FXLN TO CHLKY, SFT, CHK FRMWRK, IMBD CAL, FREE PYR, 40% FREE MRL, TRC GRYSBLK STN, NO FLOR, FNT BLSHWT O FLOR, IMMED STRMG CUT, HVY BLSHWT RNG									
8450' MD-8500' MD: CHK: 55% (CaCO3 55%) MOTT LTGY-MEDDRKGY - DRKGY, BLKY TO SUBBLKY, FXLN TO CHLKY, SFT, CHK FRMWRK, IMBD CAL, FREE PYR, 40% FREE MRL, TRC GRYSBLK STN, NO FLOR, FNT BLSHWT O FLOR, IMMED STRMG CUT, HVY BLSHWT RNG									



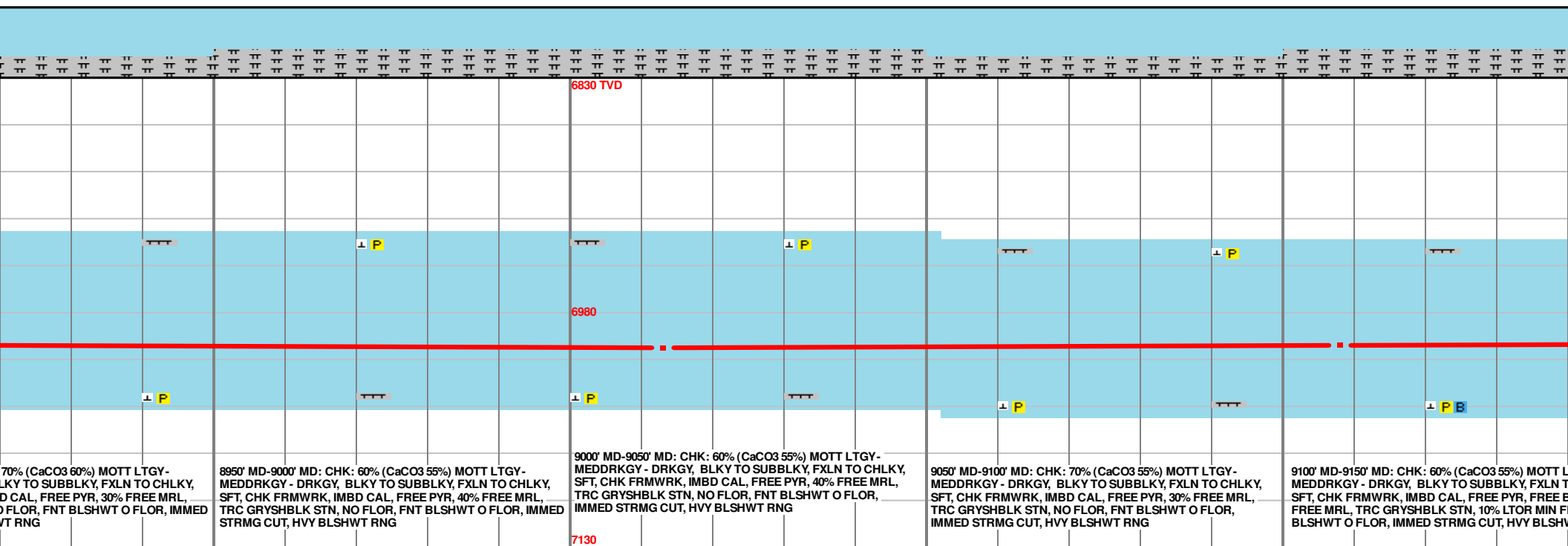
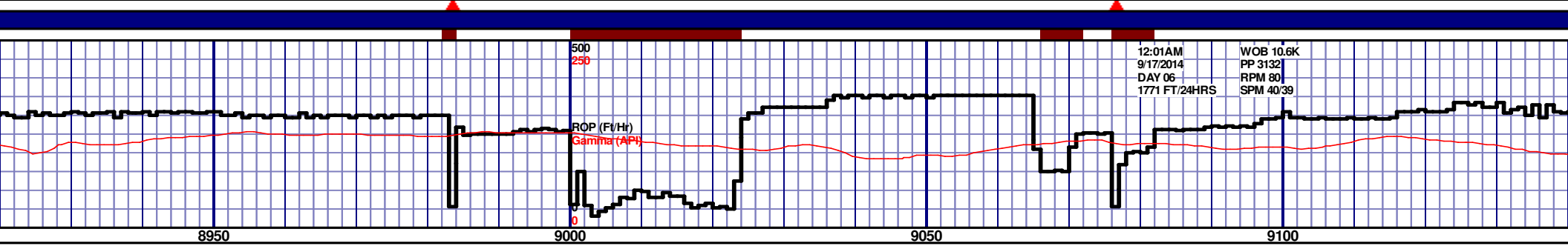
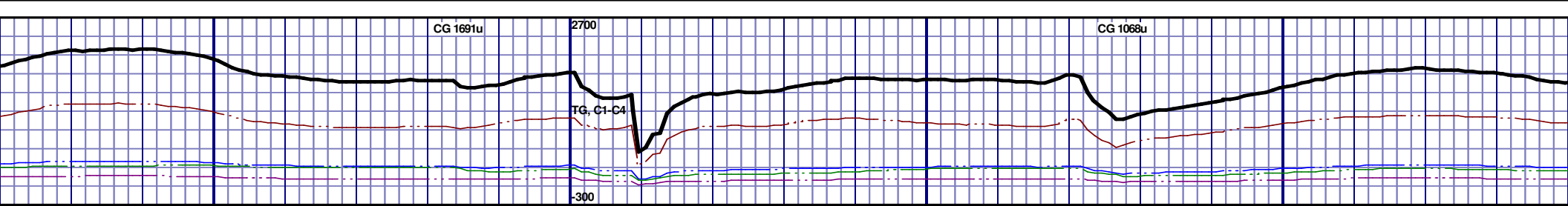
<p>5500' MOTT LTGY-BLKY, FXLN TO CHLKY, PYR, 45% FREE MRL, BLSHWT O FLOR, IMMED STRMG CUT, HVY BLSHWT RNG</p>				<p>8500' MD-8550' MD: CHK: 55% (CaCO3 55%) MOTT LTGY-MEDDRKGY - DRKGY, BLKY TO SUBBLKY, FXLN TO CHLKY, SFT, CHK FRMWRK, IMBD CAL, FREE PYR, 45% FREE MRL, TRC GRYSBLK STN, NO FLOR, FNT BLSHWT O FLOR, IMMED STRMG CUT, HVY BLSHWT RNG</p>				<p>8550' MD-8600' MD: CHK: 60% (CaCO3 55%) MOTT LTGY-MEDDRKGY - DRKGY, BLKY TO SUBBLKY, FXLN TO CHLKY, SFT, CHK FRMWRK, IMBD CAL, FREE PYR, 40% FREE MRL, TRC GRYSBLK STN, NO FLOR, FNT BLSHWT O FLOR, IMMED STRMG CUT, HVY BLSHWT RNG</p>				<p>8600' MD-8650' MD: MRL: 60% (CaCO3 45%) MEDDRKGY - DRKGY, BLKY TO SUBBLKY, FXLN TO CHLKY, SFT, CHK FRMWRK, IMBD CAL, FREE PYR, TRC FREE BENT, 40% FREE CHK, NO STN, TRC LTOR MIN FLOR, FNT BLSHWT O FLOR, IMMED STRMG CUT, HVY BLSHWT RNG</p>				<p>8650' MD-8700' MD: MRL: 70% (CaCO3 40%) MEDDRKGY - DRKGY, BLKY TO SUBBLKY, FXLN TO CHLKY, SFT, CHK FRMWRK, IMBD CAL, FREE PYR, TRC FREE BENT, 30% FREE CHK, NO STN, TRC LTOR MIN FLOR, FNT BLSHWT O FLOR, IMMED STRMG CUT, HVY BLSHWT RNG</p>			
<p>5500' MOTT LTGY-BLKY, FXLN TO CHLKY, PYR, 45% FREE MRL, BLSHWT O FLOR, IMMED STRMG CUT, HVY BLSHWT RNG</p>				<p>8500' MD-8550' MD: CHK: 55% (CaCO3 55%) MOTT LTGY-MEDDRKGY - DRKGY, BLKY TO SUBBLKY, FXLN TO CHLKY, SFT, CHK FRMWRK, IMBD CAL, FREE PYR, 45% FREE MRL, TRC GRYSBLK STN, NO FLOR, FNT BLSHWT O FLOR, IMMED STRMG CUT, HVY BLSHWT RNG</p>				<p>8550' MD-8600' MD: CHK: 60% (CaCO3 55%) MOTT LTGY-MEDDRKGY - DRKGY, BLKY TO SUBBLKY, FXLN TO CHLKY, SFT, CHK FRMWRK, IMBD CAL, FREE PYR, 40% FREE MRL, TRC GRYSBLK STN, NO FLOR, FNT BLSHWT O FLOR, IMMED STRMG CUT, HVY BLSHWT RNG</p>				<p>8600' MD-8650' MD: MRL: 60% (CaCO3 45%) MEDDRKGY - DRKGY, BLKY TO SUBBLKY, FXLN TO CHLKY, SFT, CHK FRMWRK, IMBD CAL, FREE PYR, TRC FREE BENT, 40% FREE CHK, NO STN, TRC LTOR MIN FLOR, FNT BLSHWT O FLOR, IMMED STRMG CUT, HVY BLSHWT RNG</p>				<p>8650' MD-8700' MD: MRL: 70% (CaCO3 40%) MEDDRKGY - DRKGY, BLKY TO SUBBLKY, FXLN TO CHLKY, SFT, CHK FRMWRK, IMBD CAL, FREE PYR, TRC FREE BENT, 30% FREE CHK, NO STN, TRC LTOR MIN FLOR, FNT BLSHWT O FLOR, IMMED STRMG CUT, HVY BLSHWT RNG</p>			

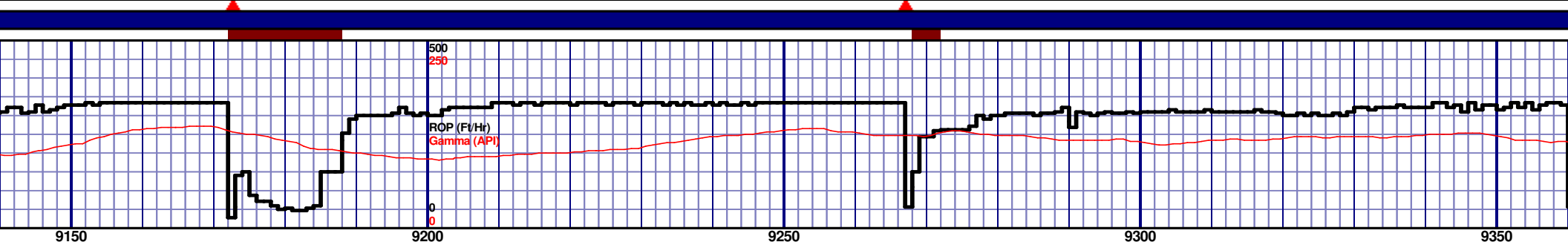
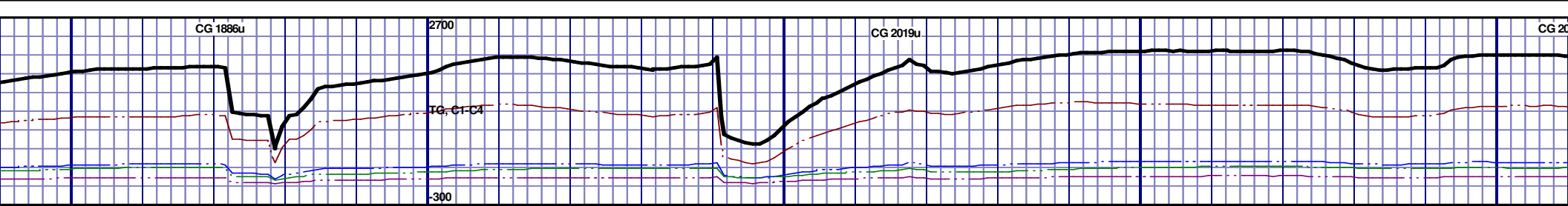


8700' MD-8750' MD: MRL: 70% (CaCO3 40%) MEDDRKGY - DRKGY, BLKY TO SUBBLKY, FXLN TO CHLKY, SFT, CHK FRMWRK, IMBD CAL, FREE PYR, TRC FREE BENT, 30% FREE CHK, NO STN, TRC LTOR MIN FLOR, FNT BLSHWT O FLOR, IMMED STRMG CUT, HVY BLSHWT RNG									
8750' MD-8800' MD: MRL: 65% (CaCO3 45%) MEDDRKGY - DRKGY, BLKY TO SUBBLKY, FXLN TO CHLKY, SFT, CHK FRMWRK, IMBD CAL, FREE PYR, TRC FREE BENT, 35% FREE CHK, NO STN, TRC LTOR MIN FLOR, FNT BLSHWT O FLOR, IMMED STRMG CUT, HVY BLSHWT RNG									
8800' MD-8850' MD: CHK: 60% (CaCO3 55%) MOTT LTGY- MEDDRKGY - DRKGY, BLKY TO SUBBLKY, FXLN TO CHLKY, SFT, CHK FRMWRK, IMBD CAL, FREE PYR, 40% FREE MRL, TRC GRYSHBLK STN, NO FLOR, FNT BLSHWT O FLOR, IMMED STRMG CUT, HVY BLSHWT RNG									
8850' MD-8900' MD: CHK: 70% (CaCO3 60%) MOTT LTGY- MEDDRKGY - DRKGY, BLKY TO SUBBLKY, FXLN TO CHLKY, SFT, CHK FRMWRK, IMBD CAL, FREE PYR, 30% FREE MRL, TRC GRYSHBLK STN, NO FLOR, FNT BLSHWT O FLOR, IMMED STRMG CUT, HVY BLSHWT RNG									
8900' MD-8950' MD: CHK: MEDDRKGY - DRKGY, BLKY TO SUBBLKY, FXLN TO CHLKY, SFT, CHK FRMWRK, IMBD CAL, FREE PYR, 30% FREE MRL, TRC GRYSHBLK STN, NO FLOR, FNT BLSHWT O FLOR, IMMED STRMG CUT, HVY BLSHWT RNG									

MD 8728 TVD 6995.02
INC 88.52 AZ 269.34
VS 1610.71

MD 8823 TVD 6997.73
INC 88.21 AZ 270.77
VS 1705.64

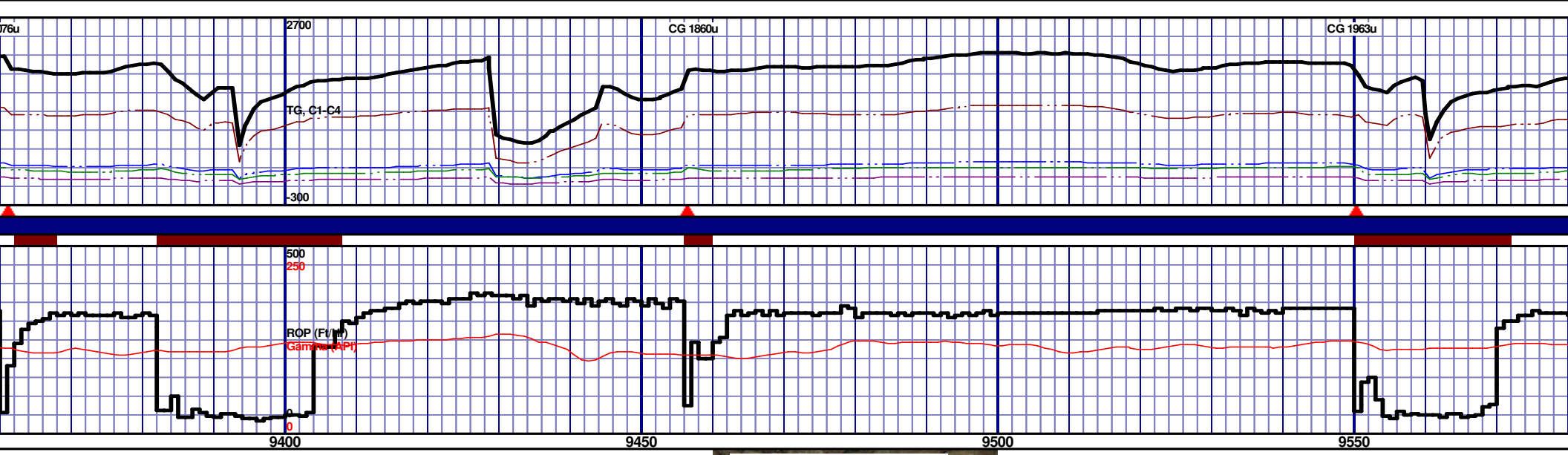




6830 TVD					6980					7130				
9150' MD-9200' MD: CHK: 60% (CaCO3 55%) MOTT LTGY- MEDDRKGY - DRKGY, BLKY TO SUBBLKY, FXLN TO CHLKY, SFT, CHK FRMWRK, IMBD CAL, FREE PYR, FREE BENT, 40% FREE MRL, TRC GRYSHBLK STN, 10% LTOR MIN FLOR, FNT BLSHWT O FLOR, IMMED STRMG CUT, HVY BLSHWT RNG					9200' MD-9250' MD: CHK: 55% (CaCO3 55%) MOTT LTGY- MEDDRKGY - DRKGY, BLKY TO SUBBLKY, FXLN TO CHLKY, SFT, CHK FRMWRK, IMBD CAL, FREE PYR, FREE BENT, 45% FREE MRL, TRC GRYSHBLK STN, 10% LTOR MIN FLOR, FNT BLSHWT O FLOR, IMMED STRMG CUT, HVY BLSHWT RNG					9250' MD-9300' MD: MRL: 60% (CaCO3 45%) MEDDRKGY - DRKGY, BLKY TO SUBBLKY, FXLN TO CHLKY, SFT, CHK FRMWRK, IMBD CAL, FREE PYR, FREE BENT, 40% FREE CHK, NO STN, 5% LTOR MIN FLOR, FNT BLSHWT O FLOR, IMMED STRMG CUT, HVY BLSHWT RNG				
9300' MD-9350' MD: MRL: 70% (CaCO3 40%) MEDDRKGY - DRKGY, BLKY TO SUBBLKY, FXLN TO CHLKY, SFT, CHK FRMWRK, IMBD CAL, FREE PYR, FREE BENT, 30% FREE CHK, NO STN, 5% LTOR MIN FLOR, FNT BLSHWT O FLOR, IMMED STRMG CUT, HVY BLSHWT RNG					9350' MD-9400' MD: MRL: 70% (CaCO3 40%) MEDDRKGY - DRKGY, BLKY TO SUBBLKY, FXLN TO CHLKY, SFT, CHK FRMWRK, IMBD CAL, FREE PYR, FREE BENT, 30% FREE CHK, NO STN, 5% LTOR MIN FLOR, FNT BLSHWT O FLOR, IMMED STRMG CUT, HVY BLSHWT RNG					9400' MD-9450' MD: MRL: 70% (CaCO3 40%) MEDDRKGY - DRKGY, BLKY TO SUBBLKY, FXLN TO CHLKY, SFT, CHK FRMWRK, IMBD CAL, FREE PYR, FREE BENT, 30% FREE CHK, NO STN, 5% LTOR MIN FLOR, FNT BLSHWT O FLOR, IMMED STRMG CUT, HVY BLSHWT RNG				

MD 9202 TVD 6999.83
INC 90.34 AZ 269.96
VS 2084.53

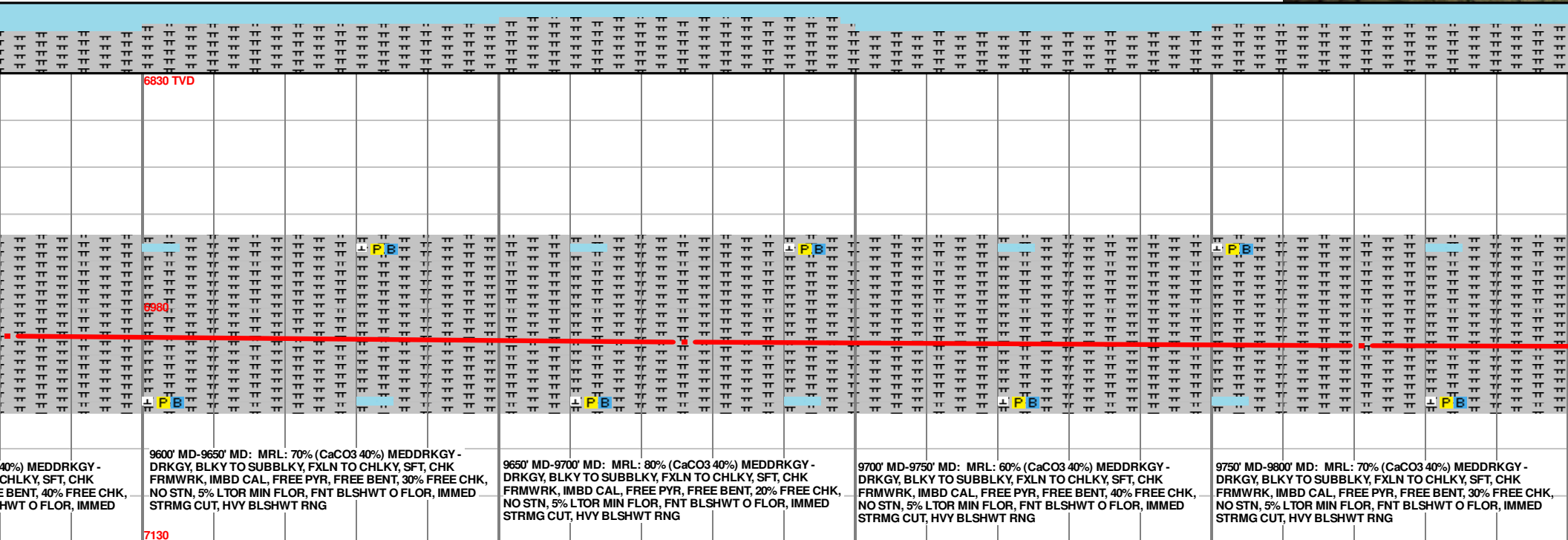
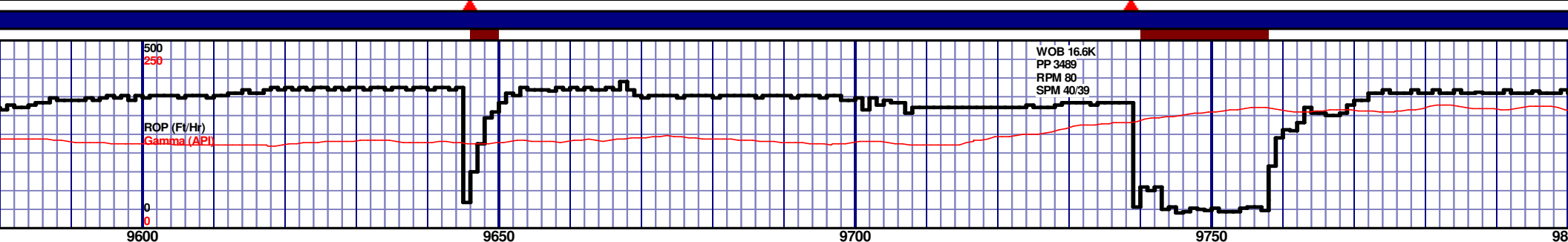
MD 9297 TVD 6999.14
INC 90.49 AZ 269.41
VS 2179.48

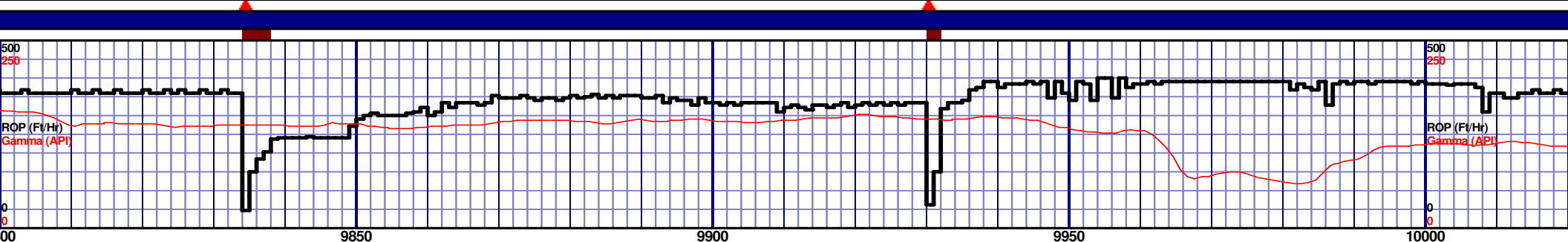
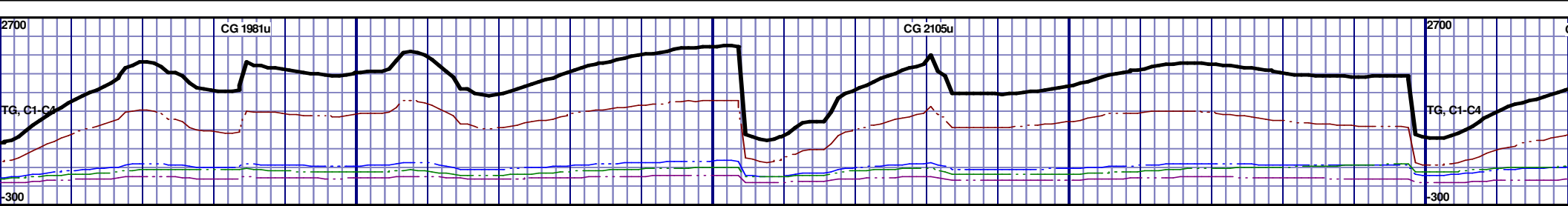


6830 TVD									
6930									
9400' MD-9450' MD: MRL: 75% (CaCO3 35%) MEDDRKGY - DRKGY, BLKY TO SUBBLKY, FXLN TO CHLKY, SFT, CHK FRMWRK, IMBD CAL, FREE PYR, FREE BENT, 25% FREE CHK, NO STN, 5% LTOR MIN FLOR, FNT BLSHWT O FLOR, IMMED STRMG CUT, HVY BLSHWT RNG									
9450' MD-9500' MD: MRL: 80% (CaCO3 35%) MEDDRKGY - DRKGY, BLKY TO SUBBLKY, FXLN TO CHLKY, SFT, CHK FRMWRK, IMBD CAL, FREE PYR, FREE BENT, 20% FREE CHK, NO STN, 5% LTOR MIN FLOR, FNT BLSHWT O FLOR, IMMED STRMG CUT, HVY BLSHWT RNG									
9500' MD-9550' MD: MRL: 70% (CaCO3 40%) MEDDRKGY - DRKGY, BLKY TO SUBBLKY, FXLN TO CHLKY, SFT, CHK FRMWRK, IMBD CAL, FREE PYR, FREE BENT, 30% FREE CHK, NO STN, 5% LTOR MIN FLOR, FNT BLSHWT O FLOR, IMMED STRMG CUT, HVY BLSHWT RNG									
9550' MD-9600' MD: MRL: 60% (CaCO3 40%) MEDDRKGY - DRKGY, BLKY TO SUBBLKY, FXLN TO CHLKY, SFT, CHK FRMWRK, IMBD CAL, FREE PYR, FREE BENT, 40% FREE CHK, NO STN, 5% LTOR MIN FLOR, FNT BLSHWT O FLOR, IMMED STRMG CUT, HVY BLSHWT RNG									

MD 9392 TVD 6998.45
INC 90.34 AZ 270.54
VS 2274.45

MD 9487 TVD 6997.56
INC 90.74 AZ 270.88
VS 2369.44

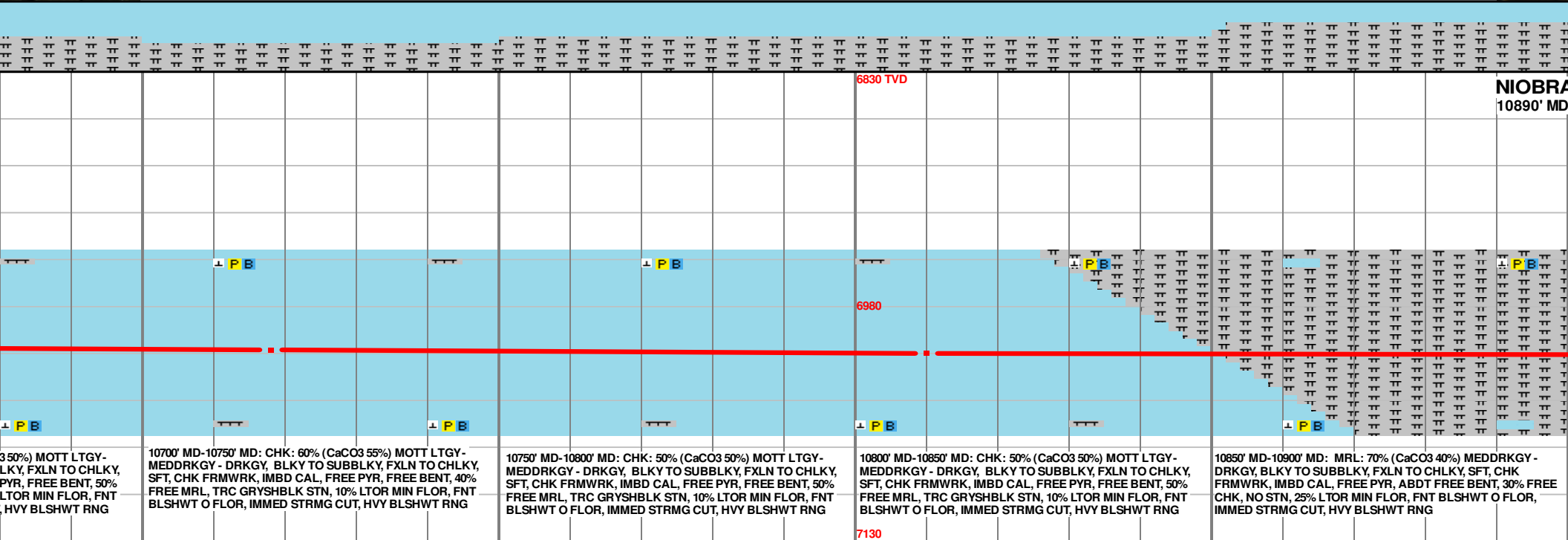
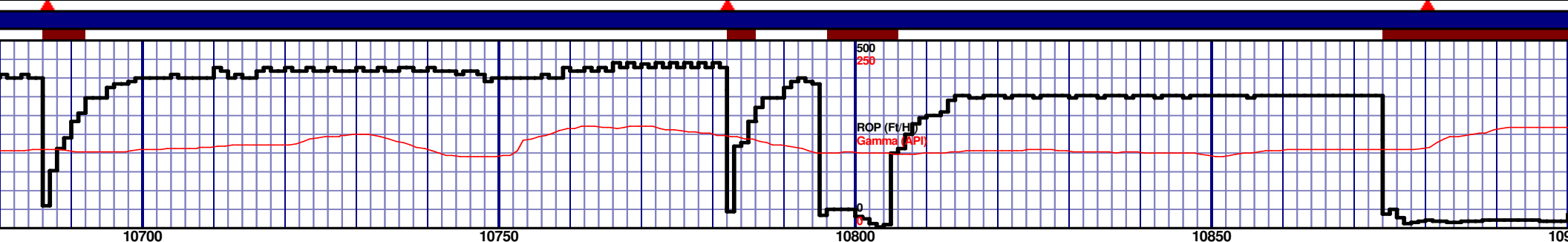




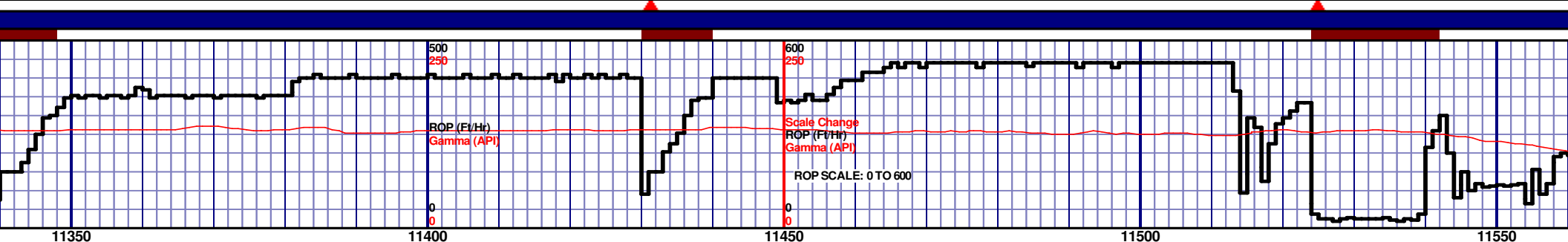
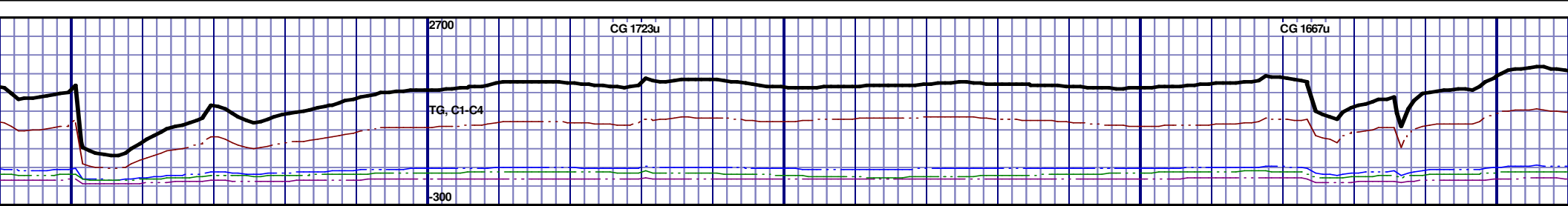
6830 TVD									
NIOBRARA B CHALK 9963' MD 7006' TVD									
6980									
9800' MD-9850' MD: MRL: 70% (CaCO3 40%) MEDDRKGY - DRKGY, BLKY TO SUBBLKY, FXLN TO CHLKY, SFT, CHK FRMWRK, IMBD CAL, FREE PYR, FREE BENT, 30% FREE CHK, NO STN, 5% LTOR MIN FLOR, FNT BLSHWT O FLOR, IMMED STRMG CUT, HVY BLSHWT RNG									
9850' MD-9900' MD: MRL: 80% (CaCO3 40%) MEDDRKGY - DRKGY, BLKY TO SUBBLKY, FXLN TO CHLKY, SFT, CHK FRMWRK, IMBD CAL, FREE PYR, FREE BENT, 20% FREE CHK, NO STN, 5% LTOR MIN FLOR, FNT BLSHWT O FLOR, IMMED STRMG CUT, HVY BLSHWT RNG									
9900' MD-9950' MD: MRL: 90% (CaCO3 35%) MEDDRKGY - DRKGY, BLKY TO SUBBLKY, FXLN TO CHLKY, SFT, CHK FRMWRK, IMBD CAL, FREE PYR, FREE BENT, 10% FREE CHK, NO STN, 5% LTOR MIN FLOR, FNT BLSHWT O FLOR, IMMED STRMG CUT, HVY BLSHWT RNG									
9950' MD-10000' MD: CHK: 70% (CaCO3 55%) MOTT LTGY - MEDDRKGY - DRKGY, BLKY TO SUBBLKY, FXLN TO CHLKY, SFT, CHK FRMWRK, IMBD CAL, FREE PYR, FREE BENT, 30% FREE MRL, TRC GRYSBLK STN, 10% LTOR MIN FLOR, FNT BLSHWT O FLOR, IMMED STRMG CUT, HVY BLSHWT RNG									
10000' MD-10050' MD: CHK: 70% (CaCO3 55%) MOTT LTGY - MEDDRKGY - DRKGY, BLKY TO SUBBLKY, FXLN TO CHLKY, SFT, CHK FRMWRK, IMBD CAL, FREE PYR, FREE BENT, 30% FREE MRL, TRC GRYSBLK STN, 10% LTOR MIN FLOR, FNT BLSHWT O FLOR, IMMED STRMG CUT, HVY BLSHWT RNG									
7130									

MD 9866 TVD 7005.26
INC 89.26 AZ 269.45
VS 2748.17

MD 9860 TVD 7006.27
INC 89.51 AZ 269.47
VS 2842.11



MD 10810 TVD 7010.16
INC 89.2 AZ 267.12
VS 3691.19

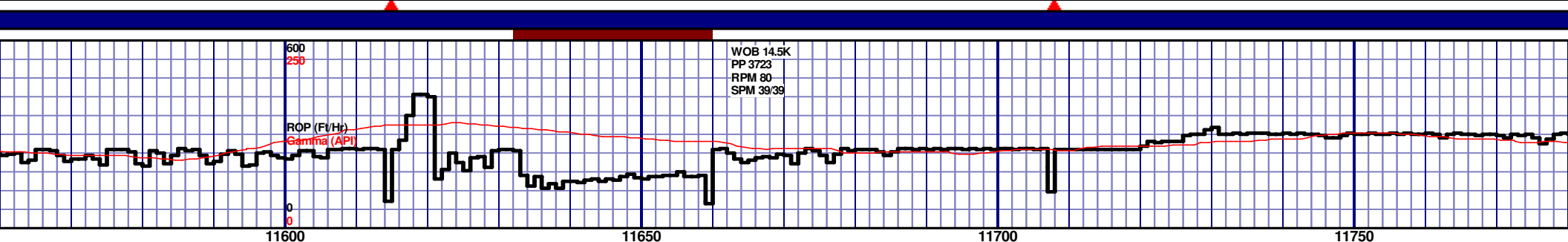
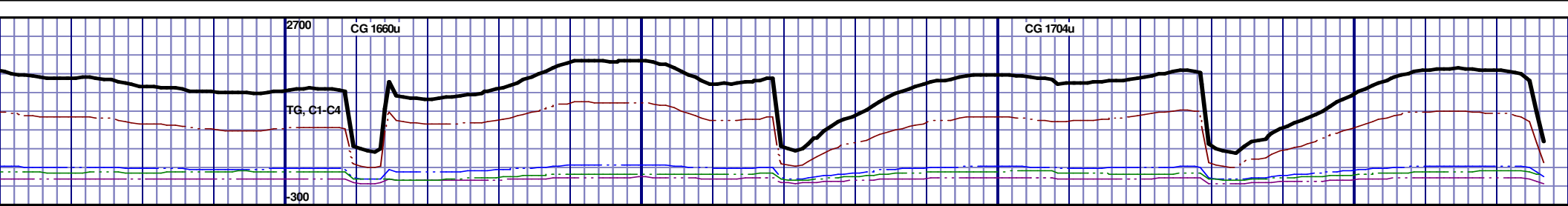


11350' MD-11400' MD: MRL: 90% (CaCO3 35%) MEDDRKGY - DRKGY, BLKY TO SUBBLKY, FXLN TO CHLKY, SFT, CHK FRMWRK, IMBD CAL, FREE PYR, ABDT FREE BENT, 10% FREE CHK, NO STN, 30% L TOR MIN FLOR, FNT BLSHWT O FLOR, IMMED STRMG CUT, HVY BLSHWT RNG	11400' MD-11450' MD: MRL: 90% (CaCO3 35%) MEDDRKGY - DRKGY, BLKY TO SUBBLKY, FXLN TO CHLKY, SFT, CHK FRMWRK, IMBD CAL, FREE PYR, ABDT FREE BENT, 10% FREE CHK, NO STN, 30% L TOR MIN FLOR, FNT BLSHWT O FLOR, IMMED STRMG CUT, HVY BLSHWT RNG	11450' MD-11500' MD: MRL: 90% (CaCO3 35%) MEDDRKGY - DRKGY, BLKY TO SUBBLKY, FXLN TO CHLKY, SFT, CHK FRMWRK, IMBD CAL, FREE PYR, ABDT FREE BENT, 10% FREE CHK, NO STN, 35% L TOR MIN FLOR, FNT BLSHWT O FLOR, IMMED STRMG CUT, HVY BLSHWT RNG	11500' MD-11550' MD: MRL: 85% (CaCO3 35%) MEDDRKGY - DRKGY, BLKY TO SUBBLKY, FXLN TO CHLKY, SFT, CHK FRMWRK, IMBD CAL, FREE PYR, ABDT FREE BENT, 15% FREE CHK, NO STN, 35% L TOR MIN FLOR, FNT BLSHWT O FLOR, IMMED STRMG CUT, HVY BLSHWT RNG	11550' MD-11600' MD: MRL: 85% (CaCO3 35%) MEDDRKGY - DRKGY, BLKY TO SUBBLKY, FXLN TO CHLKY, SFT, CHK FRMWRK, IMBD CAL, FREE PYR, ABDT FREE BENT, 15% FREE CHK, NO STN, 35% L TOR MIN FLOR, FNT BLSHWT O FLOR, IMMED STRMG CUT, HVY BLSHWT RNG
---	---	---	---	---

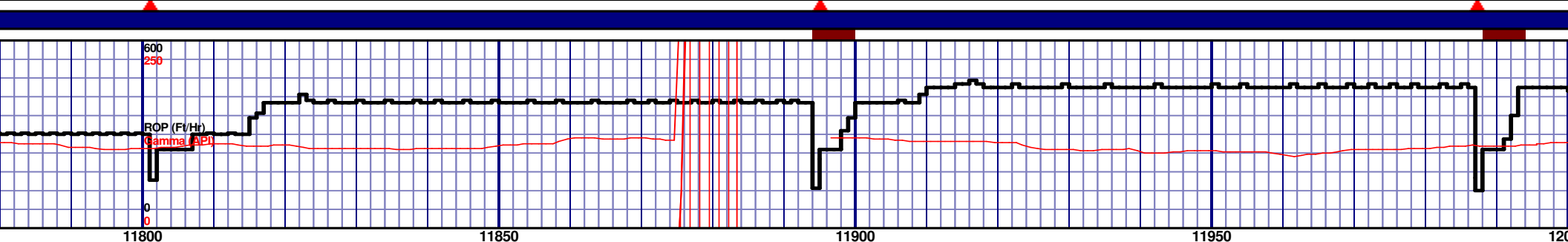
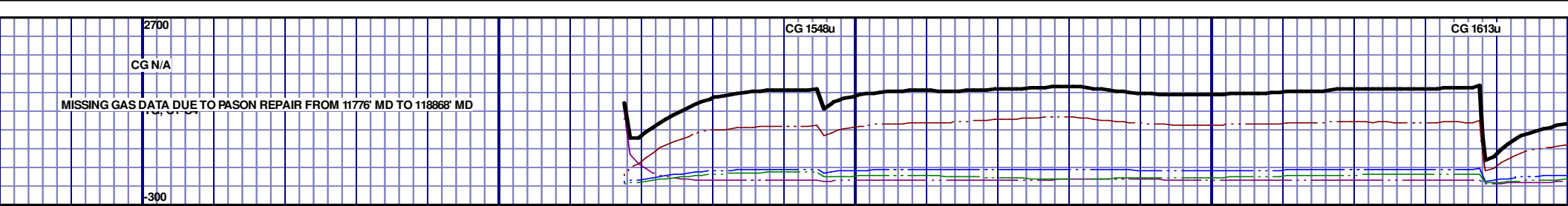
MD 11368 TVD 7009.47
INC 89.29 AZ 270.15
VS 4248.76

MD 11459 TVD 7008.93
INC 91.39 AZ 272.33
VS 4339.75

MD 11552
INC 88.58
VS 4432.76



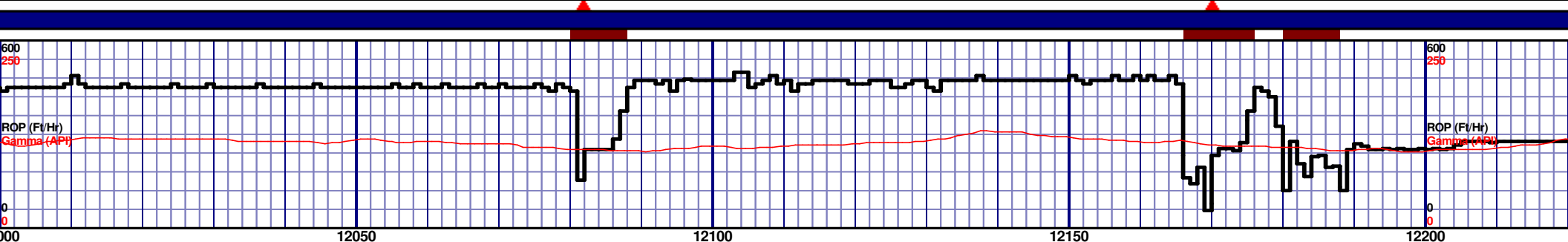
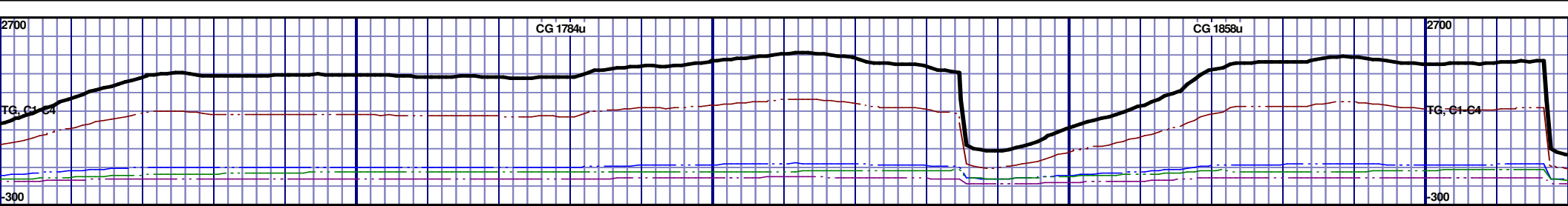
6880 TVD									
7030									
7180									
11600' MD-11650' MD: MRL: 70% (CaCO3 35%) MEDDRKGY - DRKGY, BLKY TO SUBBLKY, FXLN TO CHLKY, SFT, CHK FRMWRK, IMBD CAL, FREE PYR, ABDT FREE BENT, 30% FREE CHK, NO STN, 30% LTOR MIN FLOR, FNT BLSHWT O FLOR, IMMED STRMG CUT, HVY BLSHWT RNG									
11650' MD-11700' MD: MRL: 65% (CaCO3 35%) MEDDRKGY - DRKGY, BLKY TO SUBBLKY, FXLN TO CHLKY, SFT, CHK FRMWRK, IMBD CAL, FREE PYR, ABDT FREE BENT, 35% FREE CHK, NO STN, 25% LTOR MIN FLOR, FNT BLSHWT O FLOR, IMMED STRMG CUT, HVY BLSHWT RNG									
11700' MD-11750' MD: MRL: 60% (CaCO3 35%) MEDDRKGY - DRKGY, BLKY TO SUBBLKY, FXLN TO CHLKY, SFT, CHK FRMWRK, IMBD CAL, FREE PYR, ABDT FREE BENT, 40% FREE CHK, NO STN, 25% LTOR MIN FLOR, FNT BLSHWT O FLOR, IMMED STRMG CUT, HVY BLSHWT RNG									
11750' MD-11800' MD: CHK: 60% (CaCO3 35%) MEDDRKGY - DRKGY, BLKY TO SUBBLKY, FXLN TO CHLKY, SFT, CHK FRMWRK, IMBD CAL, FREE PYR, ABDT FREE BENT, 40% FREE CHK, NO STN, 25% LTOR MIN FLOR, FNT BLSHWT O FLOR, IMMED STRMG CUT, HVY BLSHWT RNG									



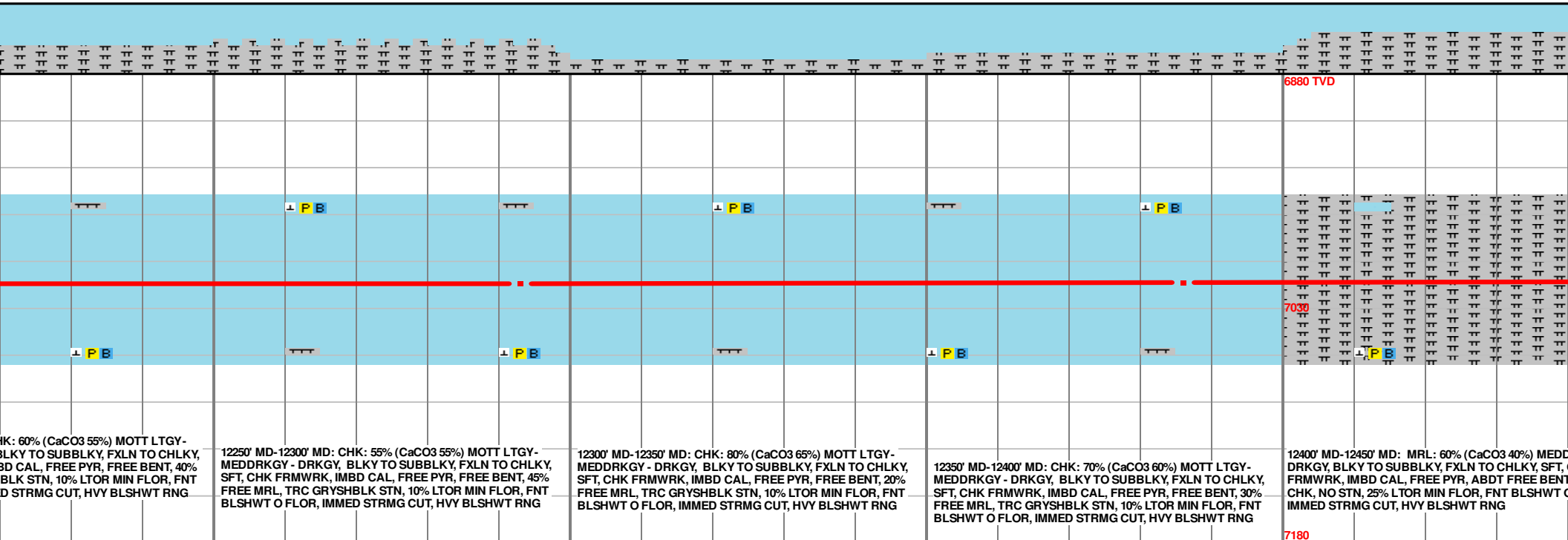
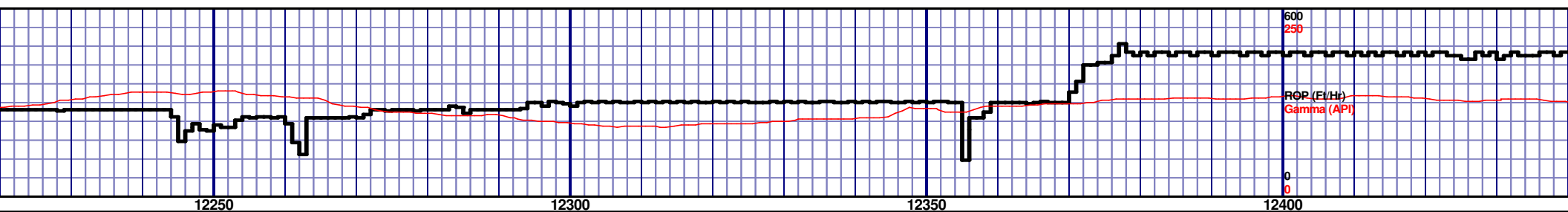
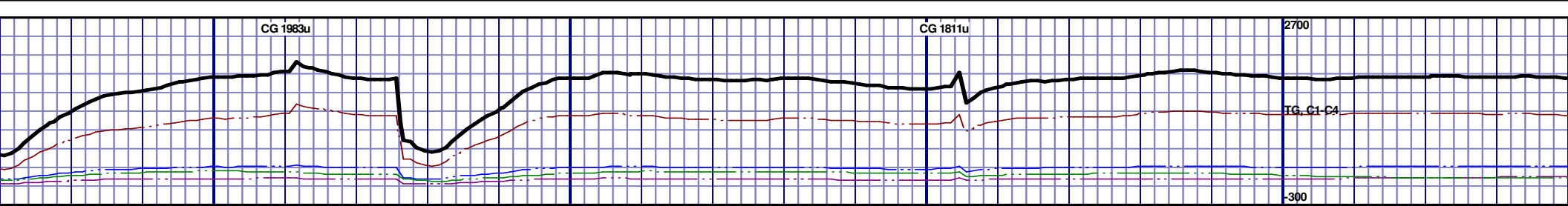
6880 TVD									
NIOBRARA B CHALK 11796' MD 7012' TVD									
7030									
7180									
03 55%) MOTT LTGY - BLKY, FXLN TO CHLKY, PYR, FREE BENT, 40% LTOR MIN FLOR, FNT IT, HVY BLSHWT RNG									
11800' MD-11850' MD: CHK: 70% (CaCO3 55%) MOTT LTGY - MEDDRKGY - DRKGY, BLKY TO SUBBLKY, FXLN TO CHLKY, SFT, CHK FRMWRK, IMBD CAL, FREE PYR, FREE BENT, 30% FREE MRL, TRC GRYSHBLK STN, 10% LTOR MIN FLOR, FNT BLSHWT O FLOR, IMMED STRMG CUT, HVY BLSHWT RNG									
11850' MD-11900' MD: CHK: 70% (CaCO3 60%) MOTT LTGY - MEDDRKGY - DRKGY, BLKY TO SUBBLKY, FXLN TO CHLKY, SFT, CHK FRMWRK, IMBD CAL, FREE PYR, FREE BENT, 30% FREE MRL, TRC GRYSHBLK STN, 10% LTOR MIN FLOR, FNT BLSHWT O FLOR, IMMED STRMG CUT, HVY BLSHWT RNG									
11900' MD-11950' MD: CHK: 80% (CaCO3 65%) MOTT LTGY - MEDDRKGY - DRKGY, BLKY TO SUBBLKY, FXLN TO CHLKY, SFT, CHK FRMWRK, IMBD CAL, FREE PYR, FREE BENT, 20% FREE MRL, TRC GRYSHBLK STN, 10% LTOR MIN FLOR, FNT BLSHWT O FLOR, IMMED STRMG CUT, HVY BLSHWT RNG									
11950' MD-12000' MD: CHK: 70% (CaCO3 65%) MOTT LTGY - MEDDRKGY - DRKGY, BLKY TO SUBBLKY, FXLN TO CHLKY, SFT, CHK FRMWRK, IMBD CAL, FREE PYR, FREE BENT, 30% FREE MRL, TRC GRYSHBLK STN, 10% LTOR MIN FLOR, FNT BLSHWT O FLOR, IMMED STRMG CUT, HVY BLSHWT RNG									

MD 11829 TVD 7013.28
INC 89.45 AZ 270.87
VS 4709.7

MD 11921 TVD 7014.39
INC 89.17 AZ 270.27
VS 4801.68



6880 TVD					6880 TVD				
12000' MD-12050' MD: CHK: 60% (CaCO3 55%) MOTT LTGY-MEDDRKGY - DRKGY, BLKY TO SUBBLKY, FXLN TO CHLKY, SFT, CHK FRMWRK, IMBD CAL, FREE PYR, FREE BENT, 40% FREE MRL, TRC GRYSBLK STN, 10% LTOR MIN FLOR, FNT BLSHWT O FLOR, IMMED STRMG CUT, HVY BLSHWT RNG					12050' MD-12100' MD: CHK: 60% (CaCO3 55%) MOTT LTGY-MEDDRKGY - DRKGY, BLKY TO SUBBLKY, FXLN TO CHLKY, SFT, CHK FRMWRK, IMBD CAL, FREE PYR, FREE BENT, 40% FREE MRL, TRC GRYSBLK STN, 10% LTOR MIN FLOR, FNT BLSHWT O FLOR, IMMED STRMG CUT, HVY BLSHWT RNG				
12100' MD-12150' MD: CHK: 70% (CaCO3 65%) MOTT LTGY-MEDDRKGY - DRKGY, BLKY TO SUBBLKY, FXLN TO CHLKY, SFT, CHK FRMWRK, IMBD CAL, FREE PYR, FREE BENT, 30% FREE MRL, TRC GRYSBLK STN, 10% LTOR MIN FLOR, FNT BLSHWT O FLOR, IMMED STRMG CUT, HVY BLSHWT RNG					12150' MD-12200' MD: CHK: 60% (CaCO3 55%) MOTT LTGY-MEDDRKGY - DRKGY, BLKY TO SUBBLKY, FXLN TO CHLKY, SFT, CHK FRMWRK, IMBD CAL, FREE PYR, FREE BENT, 40% FREE MRL, TRC GRYSBLK STN, 10% LTOR MIN FLOR, FNT BLSHWT O FLOR, IMMED STRMG CUT, HVY BLSHWT RNG				
12200' MD-12250' MD: CHK: 60% (CaCO3 55%) MOTT LTGY-MEDDRKGY - DRKGY, BLKY TO SUBBLKY, FXLN TO CHLKY, SFT, CHK FRMWRK, IMBD CAL, FREE PYR, FREE BENT, 40% FREE MRL, TRC GRYSBLK STN, 10% LTOR MIN FLOR, FNT BLSHWT O FLOR, IMMED STRMG CUT, HVY BLSHWT RNG					12200' MD-12250' MD: CHK: 60% (CaCO3 55%) MOTT LTGY-MEDDRKGY - DRKGY, BLKY TO SUBBLKY, FXLN TO CHLKY, SFT, CHK FRMWRK, IMBD CAL, FREE PYR, FREE BENT, 40% FREE MRL, TRC GRYSBLK STN, 10% LTOR MIN FLOR, FNT BLSHWT O FLOR, IMMED STRMG CUT, HVY BLSHWT RNG				



CHK: 60% (CaCO3 55%) MOTT LTGY-
BLKY TO SUBBLKY, FXLN TO CHLKY,
IMBD CAL, FREE PYR, FREE BENT, 40%
BLK STN, 10% LTOR MIN FLOR, FNT
D STRMG CUT, HVY BLSHWT RNG

12250' MD-12300' MD: CHK: 55% (CaCO3 55%) MOTT LTGY-
MEDDRKGY - DRKGY, BLKY TO SUBBLKY, FXLN TO CHLKY,
SFT, CHK FRMWRK, IMBD CAL, FREE PYR, FREE BENT, 45%
FREE MRL, TRC GRYSBLK STN, 10% LTOR MIN FLOR, FNT
BLSHWT O FLOR, IMMED STRMG CUT, HVY BLSHWT RNG

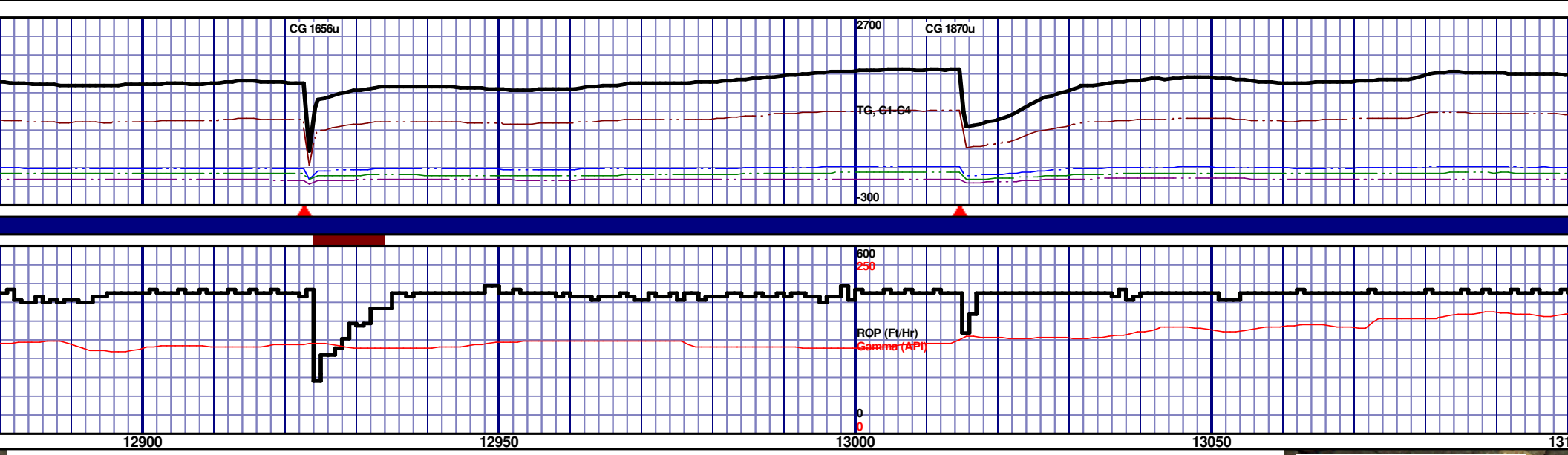
12300' MD-12350' MD: CHK: 80% (CaCO3 65%) MOTT LTGY-
MEDDRKGY - DRKGY, BLKY TO SUBBLKY, FXLN TO CHLKY,
SFT, CHK FRMWRK, IMBD CAL, FREE PYR, FREE BENT, 20%
FREE MRL, TRC GRYSBLK STN, 10% LTOR MIN FLOR, FNT
BLSHWT O FLOR, IMMED STRMG CUT, HVY BLSHWT RNG

12350' MD-12400' MD: CHK: 70% (CaCO3 60%) MOTT LTGY-
MEDDRKGY - DRKGY, BLKY TO SUBBLKY, FXLN TO CHLKY,
SFT, CHK FRMWRK, IMBD CAL, FREE PYR, FREE BENT, 30%
FREE MRL, TRC GRYSBLK STN, 10% LTOR MIN FLOR, FNT
BLSHWT O FLOR, IMMED STRMG CUT, HVY BLSHWT RNG

12400' MD-12450' MD: MRL: 60% (CaCO3 40%) MEDD
DRKGY, BLKY TO SUBBLKY, FXLN TO CHLKY, SFT,
FRMWRK, IMBD CAL, FREE PYR, ABTD FREE BENT
CHK, NO STN, 25% LTOR MIN FLOR, FNT BLSHWT O
IMMED STRMG CUT, HVY BLSHWT RNG



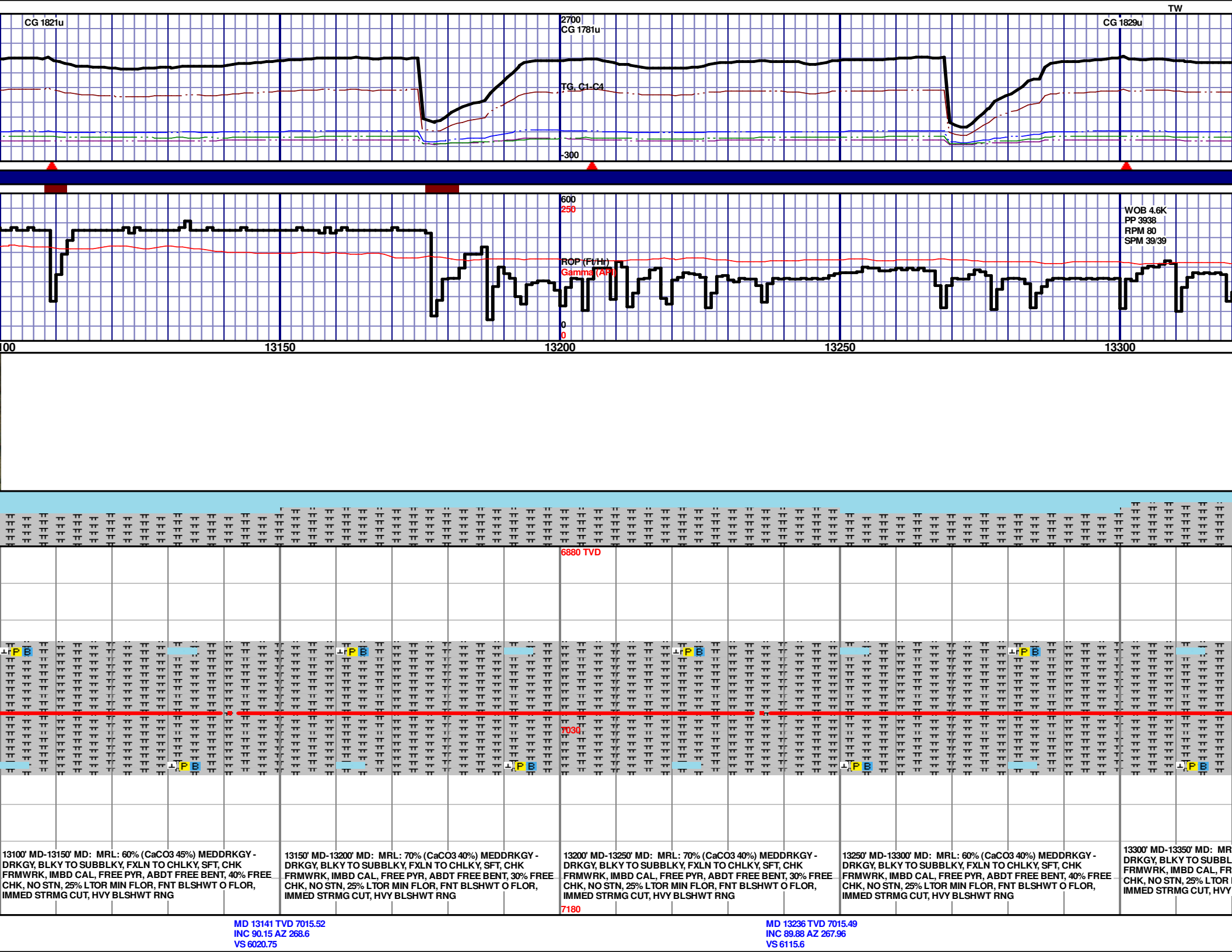
MD 12667 TVD 7014.78 INC 88.98 AZ 268.8 VS 5547.09	MD 12762 TVD 7015.53 INC 90.12 AZ 269.99 VS 5642.03	MD 12857 TVD 7015.35 INC 90.09 AZ 269.91 VS 5737
--	---	--

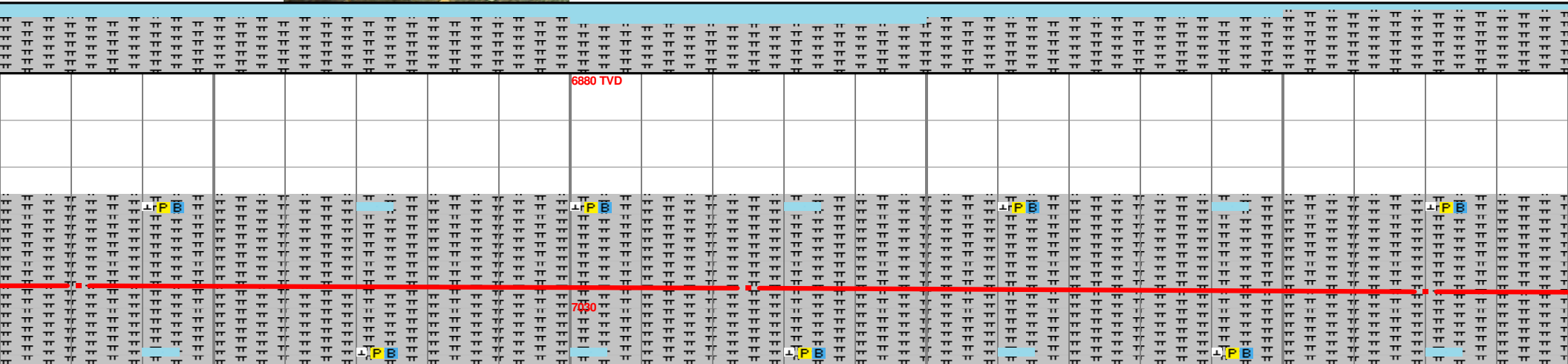
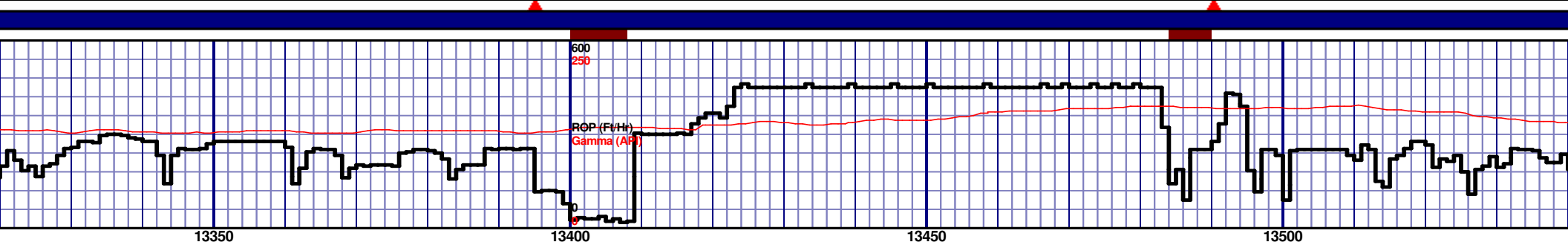


EIN AT ~12850' MD									
6880 TVD									
7030									
7180									
13000' MD-13050' MD: MRL: 65% (CaCO3 40%) MEDDRKGY - DRKGY, BLKY TO SUBBLKY, FXLN TO CHLKY, SFT, CHK FRMWRK, IMBD CAL, FREE PYR, ABDT FREE BENT, 35% FREE CHK, NO STN, 25% LTOR MIN FLOR, FNT BLSHWT O FLOR, IMMED STRMG CUT, HVY BLSHWT RNG									
13050' MD-13100' MD: MRL: 70% (CaCO3 40%) MEDDRKGY - DRKGY, BLKY TO SUBBLKY, FXLN TO CHLKY, SFT, CHK FRMWRK, IMBD CAL, FREE PYR, ABDT FREE BENT, 30% FREE CHK, NO STN, 25% LTOR MIN FLOR, FNT BLSHWT O FLOR, IMMED STRMG CUT, HVY BLSHWT RNG									

MD 12951 TVD 7015.46
INC 89.78 AZ 269.25
VS 5830.95

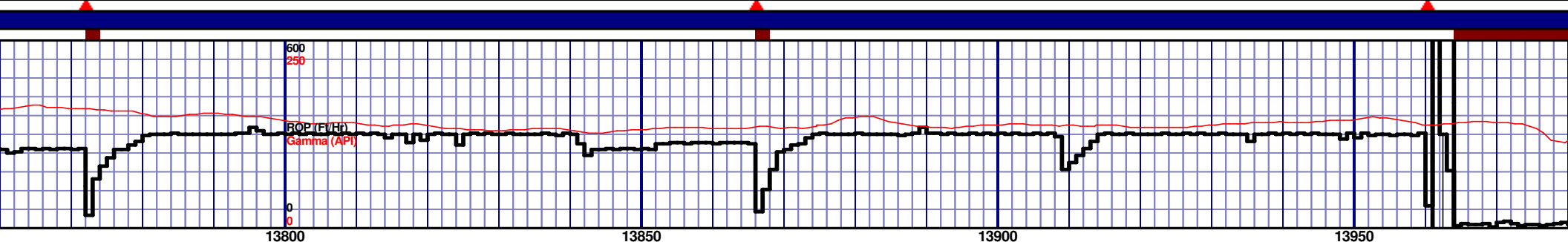
MD 13046 TVD 7015.64
INC 90 AZ 268.59
VS 5925.86



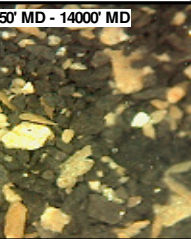
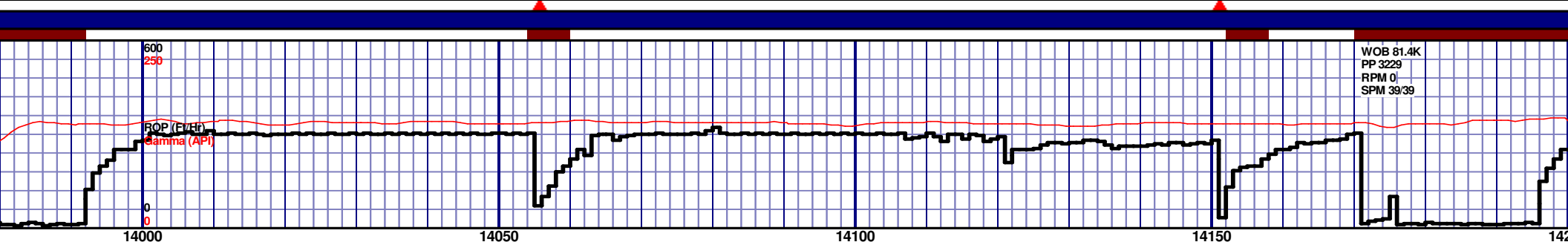
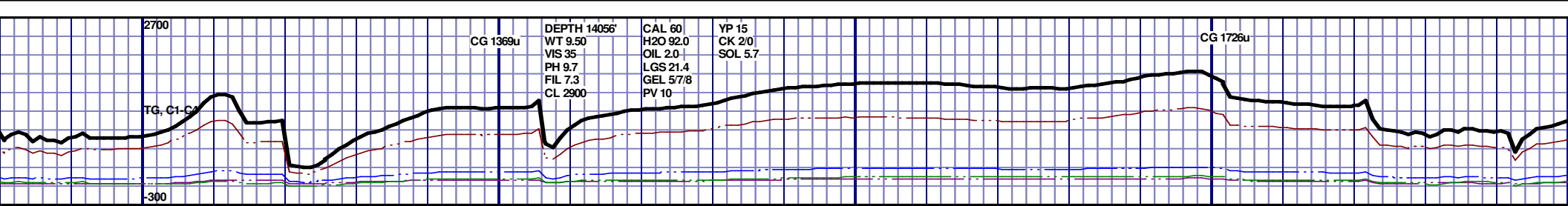


13500' MD-13550' MD: MRL: 90% (CaCO3 35%) MEDD
DRKGY, BLKY TO SUBBLKY, FXLN TO CHLKY, SFT,
FRMWRK, IMBD CAL, FREE PYR, ABDT FREE BEN
CHK, NO STN, 25% LTR MIN FLOR, FNT BLSHW
IMMED STRMG CUT, HVB BLSHW RING

[illegible]

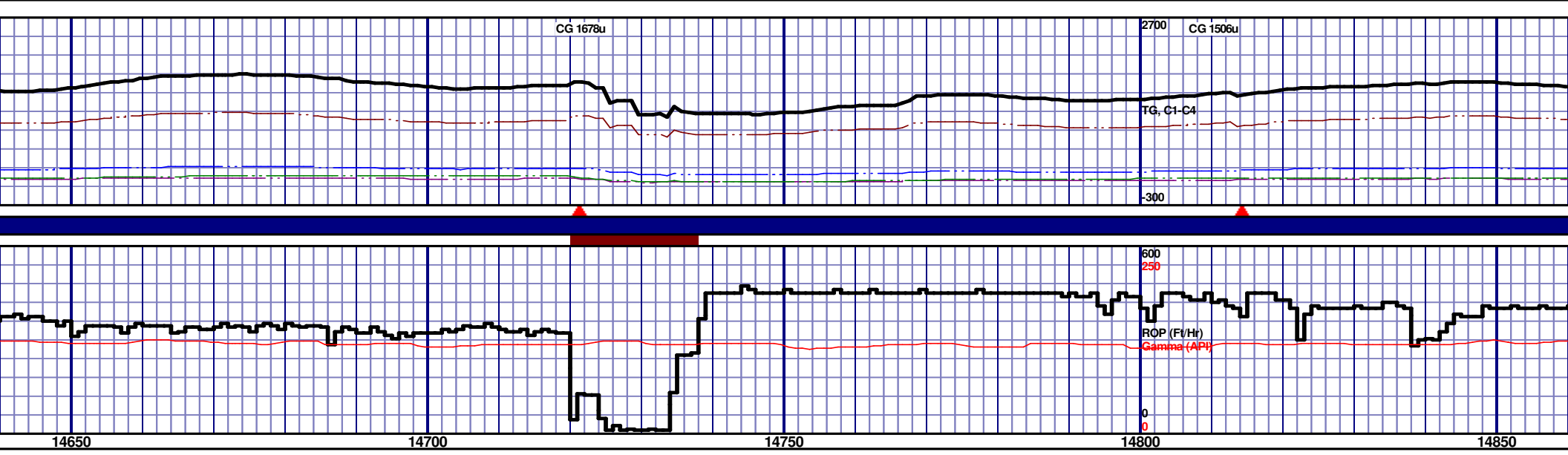
[illegible]

MD 13897 TVD 7018.84
INC 90.89 AZ 268.75
VS 6775.37



14000' MD - 14050' MD: MRL: 90% (CaCO3 35%) MEDDRKGY - DRKGY, BLKY TO SUBBLKY, FXLN TO CHLKY, SFT, CHK FRMWRK, IMBD CAL, FREE PYR, ABDT FREE BENT, 10% FREE CHK, NO STN, 25% LTOR MIN FLOR, FNT BLSHWT O FLOR, IMMED STRMG CUT, HVY BLSHWT RNG	14050' MD - 14100' MD: MRL: 90% (CaCO3 35%) MEDDRKGY - DRKGY, BLKY TO SUBBLKY, FXLN TO CHLKY, SFT, CHK FRMWRK, IMBD CAL, FREE PYR, ABDT FREE BENT, 10% FREE CHK, NO STN, 35% LTOR MIN FLOR, FNT BLSHWT O FLOR, IMMED STRMG CUT, HVY BLSHWT RNG	14100' MD - 14150' MD: MRL: 80% (CaCO3 40%) MEDDRKGY - DRKGY, BLKY TO SUBBLKY, FXLN TO CHLKY, SFT, CHK FRMWRK, IMBD CAL, FREE PYR, ABDT FREE BENT, 20% FREE CHK, NO STN, 25% LTOR MIN FLOR, FNT BLSHWT O FLOR, IMMED STRMG CUT, HVY BLSHWT RNG	14150' MD - 14200' MD: MRL: 90% (CaCO3 40%) MEDDRKGY - DRKGY, BLKY TO SUBBLKY, FXLN TO CHLKY, SFT, CHK FRMWRK, IMBD CAL, FREE PYR, ABDT FREE BENT, 10% FREE CHK, NO STN, 25% LTOR MIN FLOR, FNT BLSHWT O FLOR, IMMED STRMG CUT, HVY BLSHWT RNG
--	--	--	--

14000' MD - 14050' MD: MRL: 90% (CaCO3 35%) MEDDRKGY - DRKGY, BLKY TO SUBBLKY, FXLN TO CHLKY, SFT, CHK FRMWRK, IMBD CAL, FREE PYR, ABDT FREE BENT, 10% FREE CHK, NO STN, 25% LTOR MIN FLOR, FNT BLSHWT O FLOR, IMMED STRMG CUT, HVY BLSHWT RNG	14050' MD - 14100' MD: MRL: 90% (CaCO3 35%) MEDDRKGY - DRKGY, BLKY TO SUBBLKY, FXLN TO CHLKY, SFT, CHK FRMWRK, IMBD CAL, FREE PYR, ABDT FREE BENT, 10% FREE CHK, NO STN, 35% LTOR MIN FLOR, FNT BLSHWT O FLOR, IMMED STRMG CUT, HVY BLSHWT RNG	14100' MD - 14150' MD: MRL: 80% (CaCO3 40%) MEDDRKGY - DRKGY, BLKY TO SUBBLKY, FXLN TO CHLKY, SFT, CHK FRMWRK, IMBD CAL, FREE PYR, ABDT FREE BENT, 20% FREE CHK, NO STN, 25% LTOR MIN FLOR, FNT BLSHWT O FLOR, IMMED STRMG CUT, HVY BLSHWT RNG	14150' MD - 14200' MD: MRL: 90% (CaCO3 40%) MEDDRKGY - DRKGY, BLKY TO SUBBLKY, FXLN TO CHLKY, SFT, CHK FRMWRK, IMBD CAL, FREE PYR, ABDT FREE BENT, 10% FREE CHK, NO STN, 25% LTOR MIN FLOR, FNT BLSHWT O FLOR, IMMED STRMG CUT, HVY BLSHWT RNG
--	--	--	--

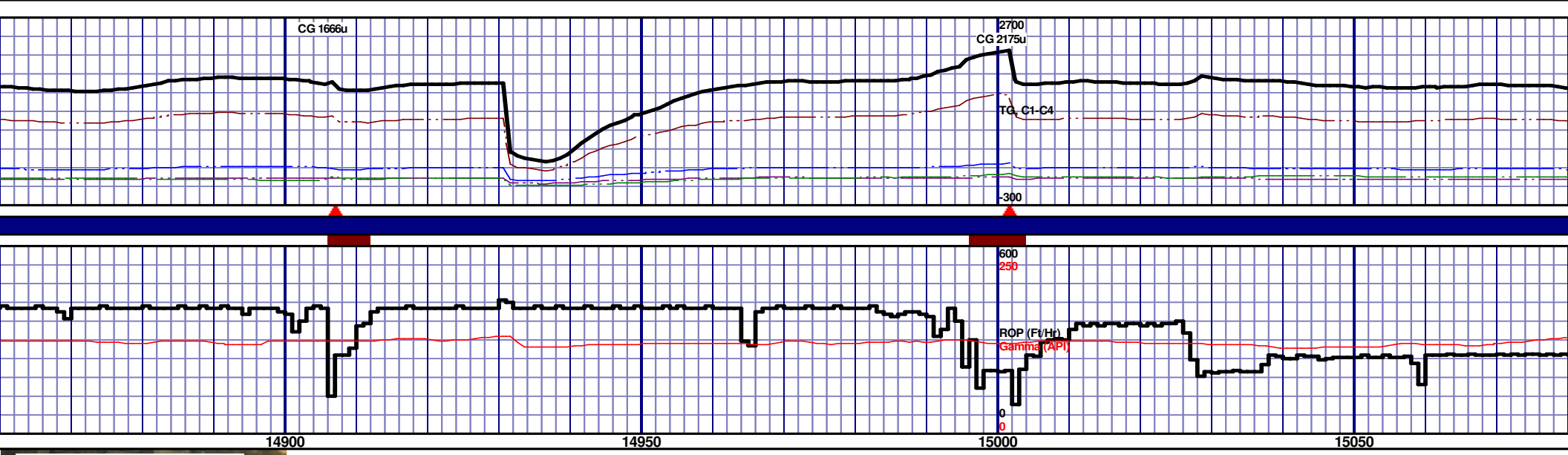


14650' MD-14700' MD: MRL: 70% (CaCO3 40%) MEDDRKGY - DRKGY, BLKY TO SUBBLKY, FXLN TO CHLKY, SFT, CHK FRMWKR, IMBD CAL, FREE PYR, ABDT FREE BENT, 30% FREE CHK, NO STN, 20% L TOR MIN FLOR, FNT BLSHWT O FLOR, IMMED STRMG CUT, HVY BLSHWT RNG					14700' MD-14750' MD: MRL: 60% (CaCO3 45%) MEDDRKGY - DRKGY, BLKY TO SUBBLKY, FXLN TO CHLKY, SFT, CHK FRMWKR, IMBD CAL, FREE PYR, ABDT FREE BENT, 40% FREE CHK, NO STN, 15% L TOR MIN FLOR, FNT BLSHWT O FLOR, IMMED STRMG CUT, HVY BLSHWT RNG					14750' MD-14800' MD: MRL: 60% (CaCO3 45%) MEDDRKGY - DRKGY, BLKY TO SUBBLKY, FXLN TO CHLKY, SFT, CHK FRMWKR, IMBD CAL, FREE PYR, ABDT FREE BENT, 40% FREE CHK, NO STN, 15% L TOR MIN FLOR, FNT BLSHWT O FLOR, IMMED STRMG CUT, HVY BLSHWT RNG					14800' MD-14850' MD: MRL: 60% (CaCO3 45%) MEDDRKGY - DRKGY, BLKY TO SUBBLKY, FXLN TO CHLKY, SFT, CHK FRMWKR, IMBD CAL, FREE PYR, ABDT FREE BENT, 40% FREE CHK, NO STN, 20% L TOR MIN FLOR, FNT BLSHWT O FLOR, IMMED STRMG CUT, HVY BLSHWT RNG					14850' MD-14900' MD: MRL: 60% (CaCO3 45%) MEDDRKGY - DRKGY, BLKY TO SUBBLKY, FXLN TO CHLKY, SFT, CHK FRMWKR, IMBD CAL, FREE PYR, ABDT FREE BENT, 40% FREE CHK, NO STN, 20% L TOR MIN FLOR, FNT BLSHWT O FLOR, IMMED STRMG CUT, HVY BLSHWT RNG				
14650' MD-14700' MD: MRL: 70% (CaCO3 40%) MEDDRKGY - DRKGY, BLKY TO SUBBLKY, FXLN TO CHLKY, SFT, CHK FRMWKR, IMBD CAL, FREE PYR, ABDT FREE BENT, 30% FREE CHK, NO STN, 20% L TOR MIN FLOR, FNT BLSHWT O FLOR, IMMED STRMG CUT, HVY BLSHWT RNG					14700' MD-14750' MD: MRL: 60% (CaCO3 45%) MEDDRKGY - DRKGY, BLKY TO SUBBLKY, FXLN TO CHLKY, SFT, CHK FRMWKR, IMBD CAL, FREE PYR, ABDT FREE BENT, 40% FREE CHK, NO STN, 15% L TOR MIN FLOR, FNT BLSHWT O FLOR, IMMED STRMG CUT, HVY BLSHWT RNG					14750' MD-14800' MD: MRL: 60% (CaCO3 45%) MEDDRKGY - DRKGY, BLKY TO SUBBLKY, FXLN TO CHLKY, SFT, CHK FRMWKR, IMBD CAL, FREE PYR, ABDT FREE BENT, 40% FREE CHK, NO STN, 15% L TOR MIN FLOR, FNT BLSHWT O FLOR, IMMED STRMG CUT, HVY BLSHWT RNG					14800' MD-14850' MD: MRL: 60% (CaCO3 45%) MEDDRKGY - DRKGY, BLKY TO SUBBLKY, FXLN TO CHLKY, SFT, CHK FRMWKR, IMBD CAL, FREE PYR, ABDT FREE BENT, 40% FREE CHK, NO STN, 20% L TOR MIN FLOR, FNT BLSHWT O FLOR, IMMED STRMG CUT, HVY BLSHWT RNG					14850' MD-14900' MD: MRL: 60% (CaCO3 45%) MEDDRKGY - DRKGY, BLKY TO SUBBLKY, FXLN TO CHLKY, SFT, CHK FRMWKR, IMBD CAL, FREE PYR, ABDT FREE BENT, 40% FREE CHK, NO STN, 20% L TOR MIN FLOR, FNT BLSHWT O FLOR, IMMED STRMG CUT, HVY BLSHWT RNG				

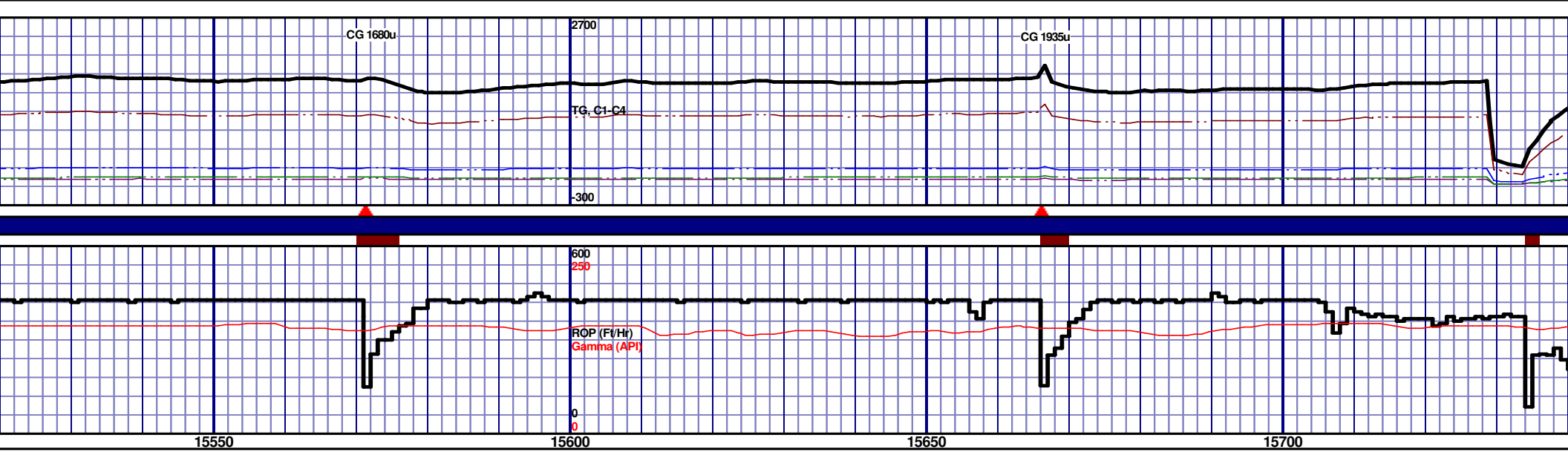
MD 14654 TVD 7031.71
INC 88.61 AZ 270.35
VS 7532.04

MD 14749 TVD 7032.32
INC 90.65 AZ 270.74
VS 7627.02

MD 14843 TVD 7031.44
INC 90.43 AZ 269.63
VS 7720.99



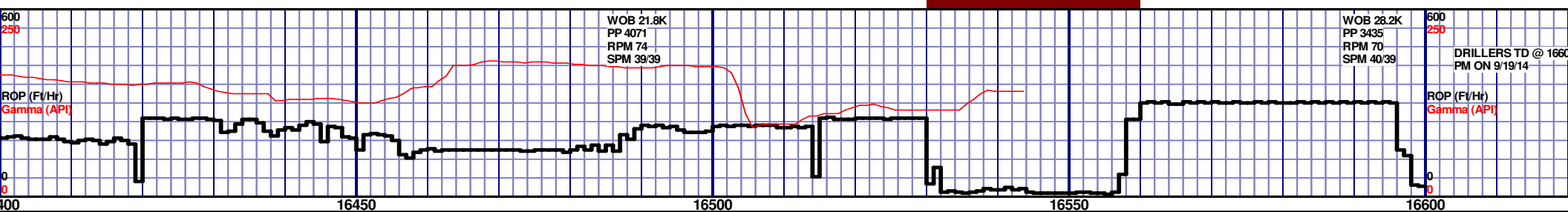
14900' MD: CHK: 60% (CaCO ₃ 50%) MOTT LTGY-DRKGY, BLKY TO SUBBLKY, FXLN TO CHLKY, FRMWRK, IMBD CAL, FREE PYR, ABNT FREE BENT, MRL, TRC GRYSBLK STN, 15% LTOR MIN FLOR, 1/4" O FLOR, IMMED STRMG CUT, HVY BLSHWT				14950' MD-14950' MD: CHK: 60% (CaCO ₃ 50%) MOTT LTGY-MEDDRKGY - DRKGY, BLKY TO SUBBLKY, FXLN TO CHLKY, SFT, CHK FRMWRK, IMBD CAL, FREE PYR, ABNT FREE BENT, 40% FREE MRL, TRC GRYSBLK STN, 15% LTOR MIN FLOR, FNT BLSHWT O FLOR, IMMED STRMG CUT, HVY BLSHWT RNG				14950' MD-15000' MD: MRL: 60% (CaCO ₃ 45%) MEDDRKGY-DRKGY, BLKY TO SUBBLKY, FXLN TO CHLKY, SFT, CHK FRMWRK, IMBD CAL, FREE PYR, ABTD FREE BENT, 40% FREE CHK, NO STN, 20% LTOR MIN FLOR, FNT BLSHWT O FLOR, IMMED STRMG CUT, HVY BLSHWT RNG				15000' MD-15050' MD: MRL: 60% (CaCO ₃ 45%) MEDDRKGY-DRKGY, BLKY TO SUBBLKY, FXLN TO CHLKY, SFT, CHK FRMWRK, IMBD CAL, FREE PYR, ABTD FREE BENT, 40% FREE CHK, NO STN, 20% LTOR MIN FLOR, FNT BLSHWT O FLOR, IMMED STRMG CUT, HVY BLSHWT RNG				15050' MD-15100' MD: MRL: 70% (CaCO ₃ 45%) MEDDRKGY, BLKY TO SUBBLKY, FXLN TO CHLKY, SFT, CHK FRMWRK, IMBD CAL, FREE PYR, ABTD FREE BENT, 40% FREE CHK, NO STN, 20% LTOR MIN FLOR, IMMED STRMG CUT, HVY BLSHWT			
14900' MD: CHK: 60% (CaCO ₃ 50%) MOTT LTGY-DRKGY, BLKY TO SUBBLKY, FXLN TO CHLKY, FRMWRK, IMBD CAL, FREE PYR, ABNT FREE BENT, MRL, TRC GRYSBLK STN, 15% LTOR MIN FLOR, 1/4" O FLOR, IMMED STRMG CUT, HVY BLSHWT				14950' MD-14950' MD: CHK: 60% (CaCO ₃ 50%) MOTT LTGY-MEDDRKGY - DRKGY, BLKY TO SUBBLKY, FXLN TO CHLKY, SFT, CHK FRMWRK, IMBD CAL, FREE PYR, ABNT FREE BENT, 40% FREE MRL, TRC GRYSBLK STN, 15% LTOR MIN FLOR, FNT BLSHWT O FLOR, IMMED STRMG CUT, HVY BLSHWT RNG				14950' MD-15000' MD: MRL: 60% (CaCO ₃ 45%) MEDDRKGY-DRKGY, BLKY TO SUBBLKY, FXLN TO CHLKY, SFT, CHK FRMWRK, IMBD CAL, FREE PYR, ABTD FREE BENT, 40% FREE CHK, NO STN, 20% LTOR MIN FLOR, FNT BLSHWT O FLOR, IMMED STRMG CUT, HVY BLSHWT RNG				15000' MD-15050' MD: MRL: 60% (CaCO ₃ 45%) MEDDRKGY-DRKGY, BLKY TO SUBBLKY, FXLN TO CHLKY, SFT, CHK FRMWRK, IMBD CAL, FREE PYR, ABTD FREE BENT, 40% FREE CHK, NO STN, 20% LTOR MIN FLOR, FNT BLSHWT O FLOR, IMMED STRMG CUT, HVY BLSHWT RNG				15050' MD-15100' MD: MRL: 70% (CaCO ₃ 45%) MEDDRKGY, BLKY TO SUBBLKY, FXLN TO CHLKY, SFT, CHK FRMWRK, IMBD CAL, FREE PYR, ABTD FREE BENT, 40% FREE CHK, NO STN, 20% LTOR MIN FLOR, IMMED STRMG CUT, HVY BLSHWT			



6880 TVD									
15550' MD-15600' MD: MRL: 80% (CaCO3 35%) MEDDRKGY - DRKGY, BLKY TO SUBBLKY, FXLN TO CHLKY, SFT, CHK FRMWRK, IMBD CAL, FREE PYR, ABDT FREE BENT, 20% FREE CHK, NO STN, 15% LTOR MIN FLOR, FNT BLSHWT O FLOR, IMMED STRMG CUT, HVY BLSHWT RNG									
15600' MD-15650' MD: MRL: 80% (CaCO3 35%) MEDDRKGY - DRKGY, BLKY TO SUBBLKY, FXLN TO CHLKY, SFT, CHK FRMWRK, IMBD CAL, FREE PYR, ABDT FREE BENT, 20% FREE CHK, NO STN, 15% LTOR MIN FLOR, FNT BLSHWT O FLOR, IMMED STRMG CUT, HVY BLSHWT RNG									
15650' MD-15700' MD: MRL: 90% (CaCO3 35%) MEDDRKGY - DRKGY, BLKY TO SUBBLKY, FXLN TO CHLKY, SFT, CHK FRMWRK, IMBD CAL, FREE PYR, ABDT FREE BENT, 10% FREE CHK, NO STN, 15% LTOR MIN FLOR, FNT BLSHWT O FLOR, IMMED STRMG CUT, HVY BLSHWT RNG									
15700' MD-15750' MD: MRL: 80% (CaCO3 35%) MEDDRKGY - DRKGY, BLKY TO SUBBLKY, FXLN TO CHLKY, SFT, CHK FRMWRK, IMBD CAL, FREE PYR, ABDT FREE BENT, 10% FREE CHK, NO STN, 15% LTOR MIN FLOR, FNT BLSHWT O FLOR, IMMED STRMG CUT, HVY BLSHWT RNG									



033.51	MD 16261 TVD 7032.9	MD 16356 TVD 7030.5
1.34	INC 90.77 AZ 268.39	INC 92.13 AZ 268.82
	VS 9138.07	VS 9232.92

[illegible]

TD @ 10

RELEAS

THANK
WACHO
AND HO
LOGGII

MD 16451 TVD 7026.2
INC 93.06 AZ 267.94
VS 9327.69

MD 16536 TVD 7022.95
INC 91.32 AZ 267.9
VS 9412.47

PTB MD 16600 TVD 7021.47
INC 91.32 AZ 267.9
VS 9476.33

S 1005u

00' MD @ 10:30

16

6600' MD

SED ON 9/19/14

YOU FROM TOM
DLZ, SCOTT HANEY
ORIZON WELL
NG, LLC