



Kerr-McGee Oil & Gas Onshore LP

A subsidiary of Anadarko Petroleum Corporation

1099 18th Street
Denver, CO 80202
720-929-6000

January 8, 2015

Matt Lepore
Director, Colorado Oil and Gas Conservation Commission
Department of Natural Resources
The Chancery Building
1120 Lincoln Street, Suite 801
Denver, CO 80203

Re: **30 Day Certification Letter - 318A.e**
JESTER 40N-14HZ (Doc No. 400766082)
Township 3 North, Range 67 West
Section 15: SWNW
Unit Acreage: 720
Unit Spacing: 03N-67W-Sec 13 SWNW, NWSW
03N-67W-Sec 14 S2N2, N2S2
03N-67W-Sec 15 S2N2, N2S2
Weld County, Colorado

Dear Director Lepore:

Kerr McGee Oil and Gas Onshore LP ("KMG") hereby certifies that KMG owns one hundred percent (100%) of the leasehold interest in the mineral rights in the proposed spacing unit. KMG hereby respectfully requests approval of this boundary well.

If you have any questions or issues regarding this permit, please contact Cheryl Light at (720) 929-6461.

Very truly yours,

Kerr-McGee Oil and Gas Onshore LP

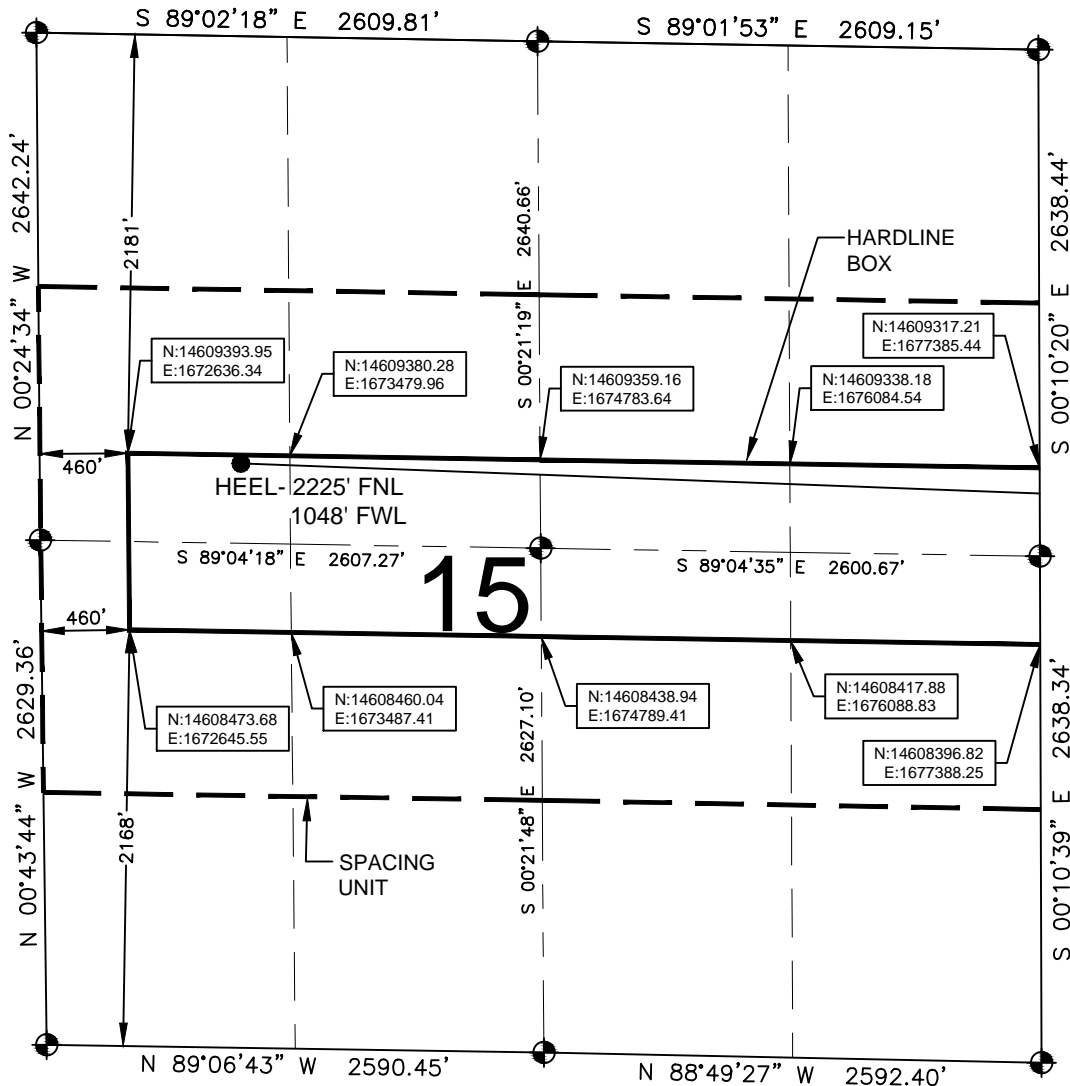
A handwritten signature in black ink, appearing to read 'Mike McConaughy'.

Mike McConaughy
Sr. Regulatory Analyst

Enclosure

HARDLINE EXHIBIT: JESTER 40N-14HZ

SECTION 15, TOWNSHIP 3 NORTH, RANGE 67 WEST, 6TH P.M.



LEGEND

- = EXISTING MONUMENT
- = PROPOSED HEEL
- = CALCULATED POSITION
- ◆ = BOTTOM HOLE
- BH = BOTTOM HOLE

HEEL LOCATION

UTM13
LATITUDE= 40.226790°
LONGITUDE= 104.882460°

LATITUDE= 40°13'36.445"
LONGITUDE= 104°52'56.855"

QRT/QRT SECTIONS WITHIN PATH OF THE HARDLINE

SWNW, SEC. 15 NWSW, SEC. 15
SENW, SEC. 15 NESW, SEC. 15
SWNE, SEC. 15 NWSE, SEC. 15
SENE, SEC. 15 NESE, SEC. 15

NOTES:

- THIS DOCUMENT IS NOT A LAND SURVEY PLAT OR IMPROVEMENT SURVEY PLAT. THIS DOCUMENT DOES NOT REFLECT A FIELD SURVEY. SECTION BREAKDOWN, MONUMENTATION AND HORIZONTAL POSITIONS SHOWN ARE BASED ON THE HEEL AND BOTTOM HOLE LOCATION PROVIDED BY ANADARKO PETROLEUM CORPORATION

BOTTOM HOLE LOCATION

NAD83
LATITUDE= 40.225782°
LONGITUDE= 104.848779°

LATITUDE= 40°13'32.815"
LONGITUDE= 104°50'55.604"

AVAILABLE FOOTAGE

10826'

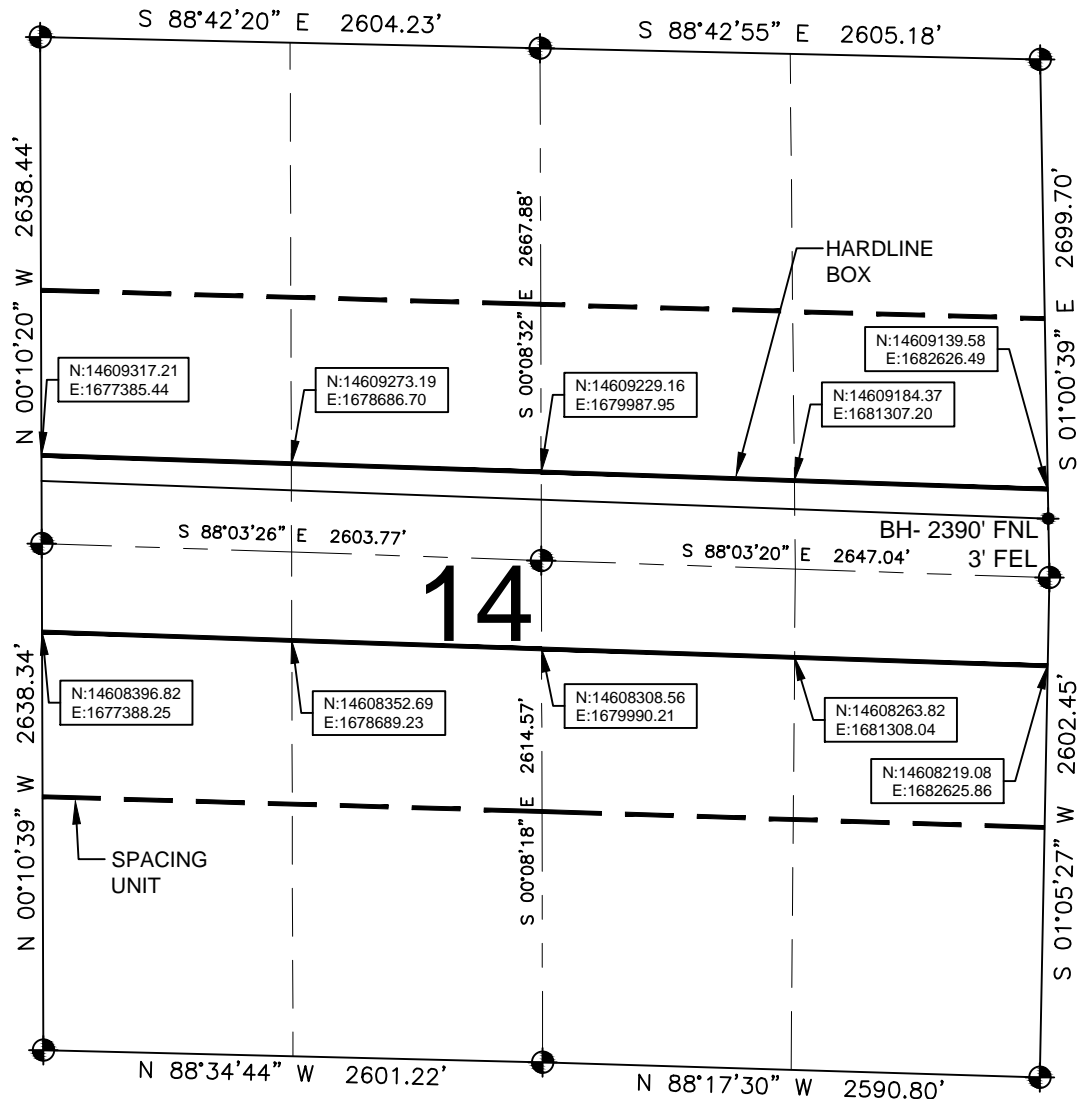


0 500 1000

SCALE: 1"= 1000'

HARDLINE EXHIBIT: JESTER 40N-14HZ

SECTION 14, TOWNSHIP 3 NORTH, RANGE 67 WEST, 6TH P.M.



LEGEND

- = EXISTING MONUMENT = BOTTOM HOLE
 = PROPOSED HEEL BH = BOTTOM HOLE

QRT/QRT SECTIONS WITHIN PATH OF THE HARDLINE

SWNW, SEC. 14 NWSW, SEC. 14
 SENW, SEC. 14 NESW, SEC. 14
 SWNE, SEC. 14 NWSE, SEC. 14
 SENE, SEC. 14 NESE, SEC. 14

NOTES:

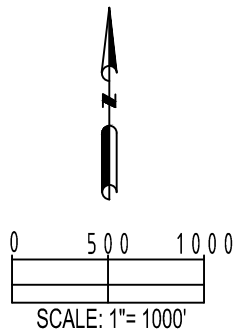
- THIS DOCUMENT IS NOT A LAND SURVEY PLAT OR IMPROVEMENT SURVEY PLAT. THIS DOCUMENT DOES NOT REFLECT A FIELD SURVEY. SECTION BREAKDOWN, MONUMENTATION AND HORIZONTAL POSITIONS SHOWN ARE BASED ON THE HEEL AND BOTTOM HOLE LOCATION PROVIDED BY ANADARKO PETROLEUM CORPORATION

PREPARED BY:



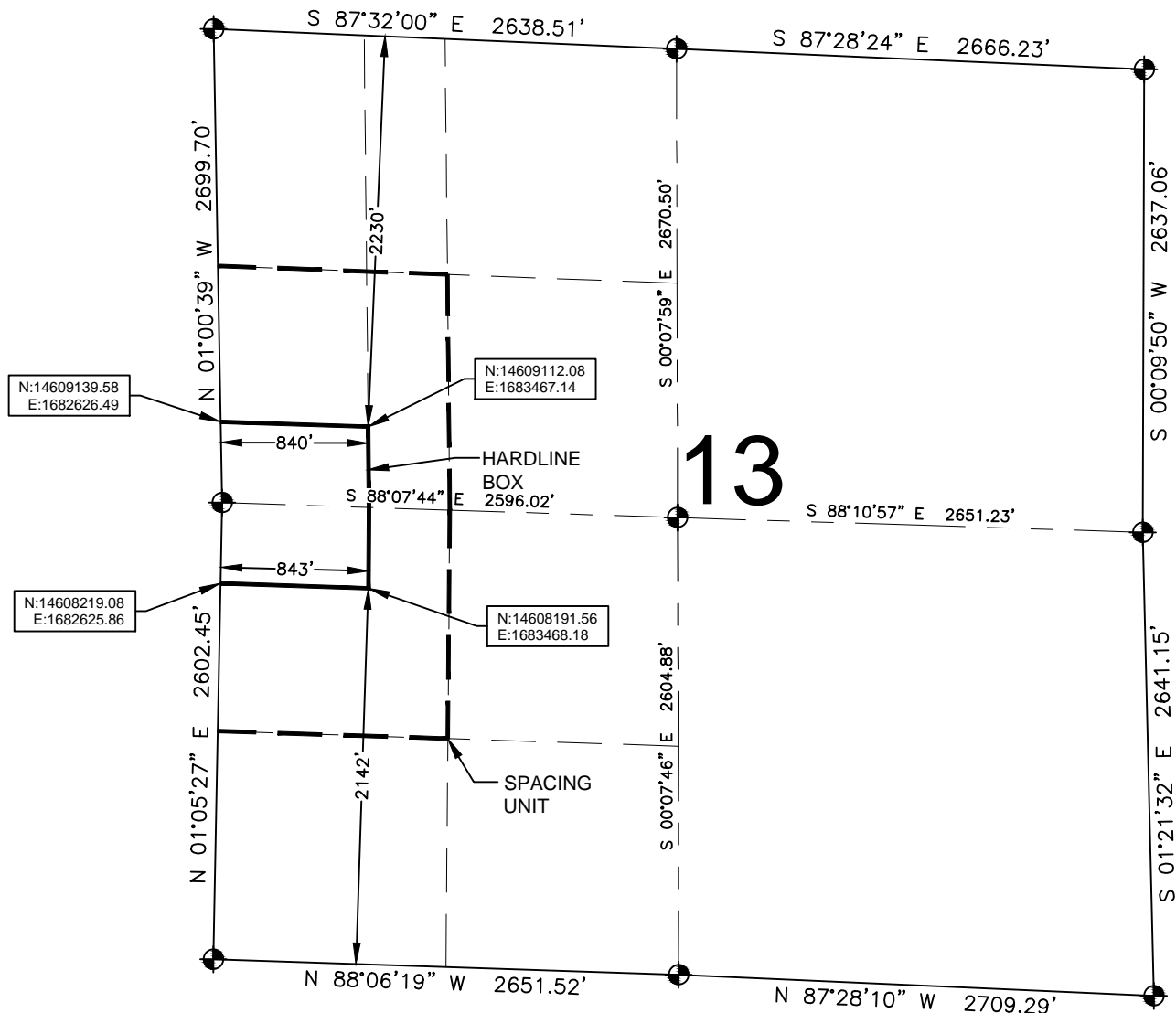
SHEET 2 OF 3

DRAWING DATE: 01-02-15		HEEL LOCATION: SW 1/4 NW 1/4, SEC. 15, T3N, R67W, 6TH P.M. WELD COUNTY, COLORADO	
BY: MDCA	CHECKED SMF		



HARDLINE EXHIBIT: JESTER 40N-14HZ

SECTION 13, TOWNSHIP 3 NORTH, RANGE 67 WEST, 6TH P.M.



LEGEND

- = EXISTING MONUMENT ● = BOTTOM HOLE
● = PROPOSED HEEL BH = BOTTOM HOLE

QRT/QRT SECTIONS WITHIN PATH OF THE HARDLINE

SWNW, SEC. 13
NWSW, SEC. 13

NOTES:

- THIS DOCUMENT IS NOT A LAND SURVEY PLAT OR IMPROVEMENT SURVEY PLAT. THIS DOCUMENT DOES NOT REFLECT A FIELD SURVEY. SECTION BREAKDOWN, MONUMENTATION AND HORIZONTAL POSITIONS SHOWN ARE BASED ON THE HEEL AND BOTTOM HOLE LOCATION PROVIDED BY ANADARKO PETROLEUM CORPORATION