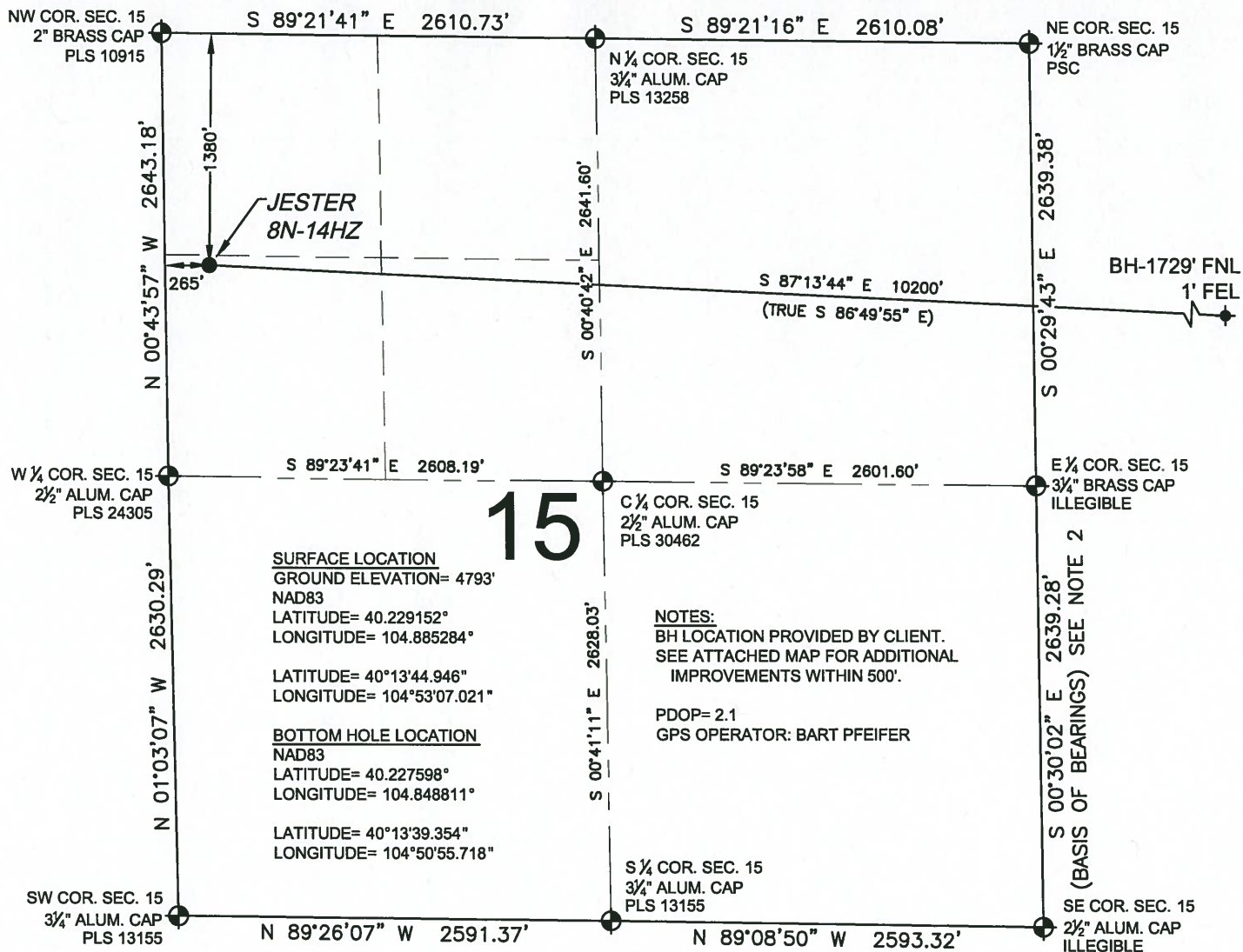


WELL LOCATION CERTIFICATE: JESTER 8N-14HZ

SECTION 15, TOWNSHIP 3 NORTH, RANGE 67 WEST, 6TH P.M.



WELL JESTER 8N-14HZ TO BE LOCATED 1380' FNL AND 265' FWL

LEGEND

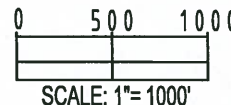
- = EXISTING MONUMENT
- ◆ = BOTTOM HOLE
- = PROPOSED WELL
- ◆ = EXISTING WELL
- = BOTTOM HOLE
- = CALCULATED POSITION

NOTES:

- THIS FIELD SURVEY CONFORMS TO THE MINIMUM STANDARDS SET BY THE C.O.G.C.C., RULE NO. 215
- BEARINGS AND DISTANCE SHOWN HEREON ARE GRID AND BASED ON THE COLORADO STATE PLANE COORDINATE SYSTEM, NAD 83/2011 BETWEEN MONUMENTS AS LABELED HEREON AND ELEVATIONS SHOWN ARE NAVD 88, AS DERIVED BY GPS OBSERVATIONS.
- GRID DISTANCES ARE SHOWN, AS MEASURED IN THE FIELD, WITH TIES TO WELLS MEASURED PERPENDICULAR TO SECTION LINES.
- ALL LINES SHOWN THAT ARE WITHOUT DIMENSION SHOULD BE CONSIDERED SCALED AND ONLY REPRESENT A GRAPHICAL DEPICTION OF THE APPROXIMATE LOCATION OF SAID LINE.

I, DANIEL JOHN CORRIELL, A LICENSED PROFESSIONAL LAND SURVEYOR IN THE STATE OF COLORADO DO HEREBY CERTIFY TO **KERR-MCGEE OIL & GAS ONSHORE LP**, THAT THE SURVEY AND WELL LOCATION CERTIFICATE SHOWN HEREON WERE DONE BY ME OR UNDER MY DIRECT SUPERVISION AND THAT THE DRAWING SHOWN HEREON ACCURATELY DEPICTS THE PROPOSED LOCATION OF THE WELL. THIS CERTIFICATE DOES NOT REPRESENT A LAND SURVEY PLAT OR IMPROVEMENT SURVEY PLAT AS DEFINED BY C.R.S. 38-51-102 AND CANNOT BE RELIED UPON TO DETERMINE OWNERSHIP.

DANIEL JOHN CORRIELL, PLS 38065
COLORADO LICENSED PROFESSIONAL LAND SURVEYOR
FOR AND ON BEHALF OF P.F.S., LLC



SHEET 1 OF 2

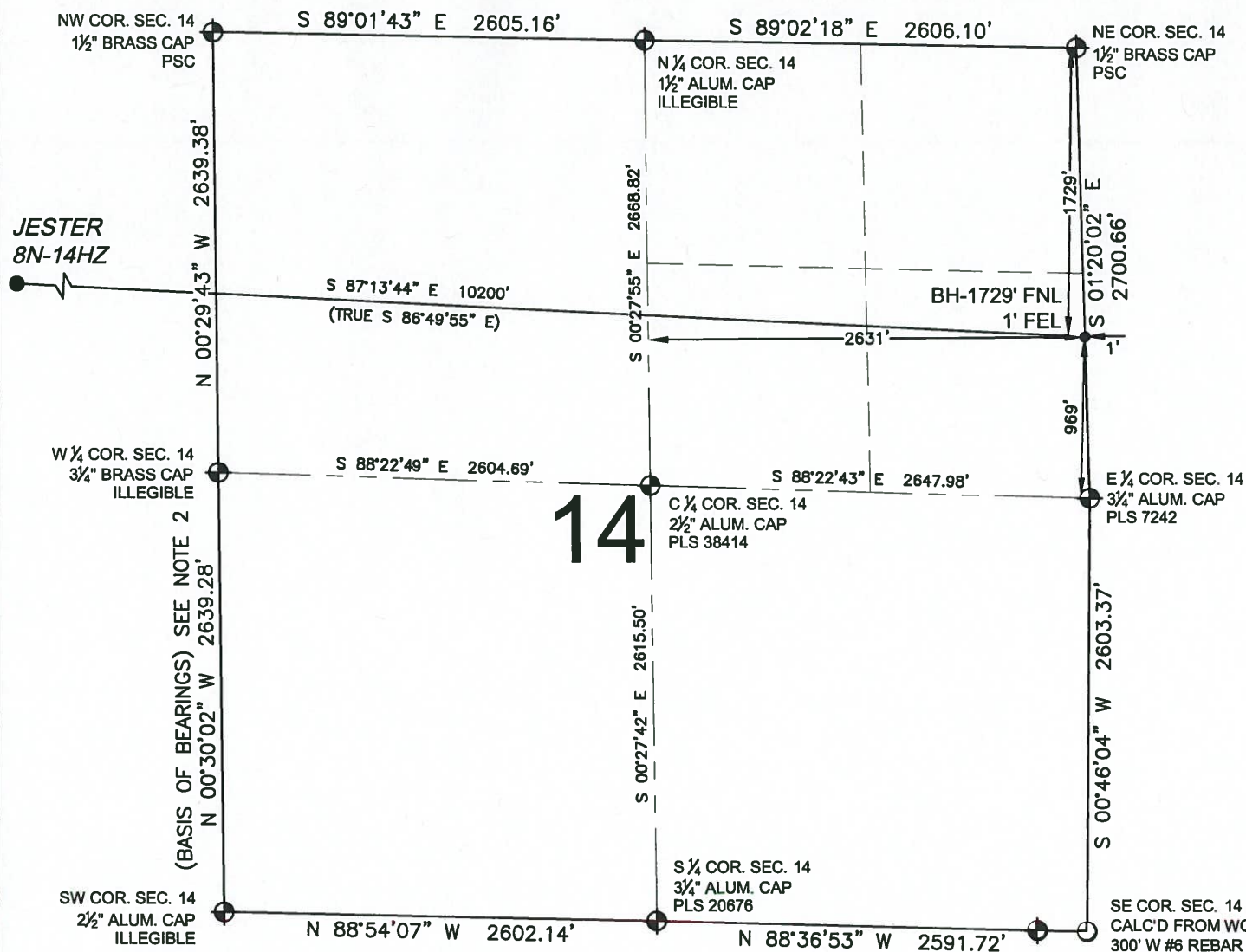


FIELD DATE: 09-04-14
DRAWING DATE: 09-11-14
BY: SMF
CHECKED: JAH
SURFACE LOCATION: SW 1/4 NW 1/4, SEC. 15, T3N, R67W, 6TH P.M.
WELD COUNTY, COLORADO

NOTICE: ACCORDING TO COLORADO LAW YOU MUST COMMENCE ANY LEGAL ACTION BASED UPON ANY DEFECT IN THIS SURVEY WITHIN THREE YEARS AFTER YOU FIRST DISCOVER SUCH DEFECT. IN NO EVENT MAY ANY ACTION BASED UPON ANY DEFECT IN THIS SURVEY BE COMMENCED MORE THAN TEN YEARS FROM THIS SAID DATE OF THIS CERTIFICATION SHOWN HEREON.

WELL LOCATION CERTIFICATE: JESTER 8N-14HZ

SECTION 14, TOWNSHIP 3 NORTH, RANGE 67 WEST, 6TH P.M.

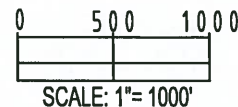


NOTES:

1. THIS FIELD SURVEY CONFORMS TO THE MINIMUM STANDARDS SET BY THE C.O.G.C.C., RULE NO. 215
2. BEARINGS AND DISTANCE SHOWN HEREON ARE GRID AND BASED ON THE COLORADO STATE PLANE COORDINATE SYSTEM, NAD 83/2011 BETWEEN MONUMENTS AS LABELED HEREON AND ELEVATIONS SHOWN ARE NAVD 88, AS DERIVED BY GPS OBSERVATIONS.
3. GRID DISTANCES ARE SHOWN, AS MEASURED IN THE FIELD, WITH TIES TO WELLS MEASURED PERPENDICULAR TO SECTION LINES.
4. ALL LINES SHOWN THAT ARE WITHOUT DIMENSION SHOULD BE CONSIDERED SCALED AND ONLY REPRESENT A GRAPHICAL DEPICTION OF THE APPROXIMATE LOCATION OF SAID LINE.

LEGEND

- = EXISTING MONUMENT ♦ = BOTTOM HOLE
● = PROPOSED WELL ♦ = EXISTING WELL
BH = BOTTOM HOLE ○ = CALCULATED POSITION



SHEET 2 OF 2

DANIEL JOHN CORRIELL, PLS 38065
COLORADO LICENSED PROFESSIONAL LAND SURVEYOR
FOR AND ON BEHALF OF P.F.S., LLC



PREPARED BY:	FIELD DATE:	SURFACE LOCATION:
PFS Petroleum Field Services, LLC 7535 Hilltop Circle Denver, CO 80221	09-04-14	SW 1/4 NW 1/4, SEC. 15, T3N, R67W, 6TH P.M.
DRAWING DATE:	CHECKED:	
09-11-14	JAH	
BY:		WELD COUNTY, COLORADO
SMF		

NOTICE: ACCORDING TO COLORADO LAW YOU MUST COMMENCE ANY LEGAL ACTION BASED UPON ANY DEFECT IN THIS SURVEY WITHIN THREE YEARS AFTER YOU FIRST DISCOVER SUCH DEFECT. IN NO EVENT MAY ANY ACTION BASED UPON ANY DEFECT IN THIS SURVEY BE COMMENCED MORE THAN TEN YEARS FROM THIS SAID DATE OF THIS CERTIFICATION SHOWN HEREON.