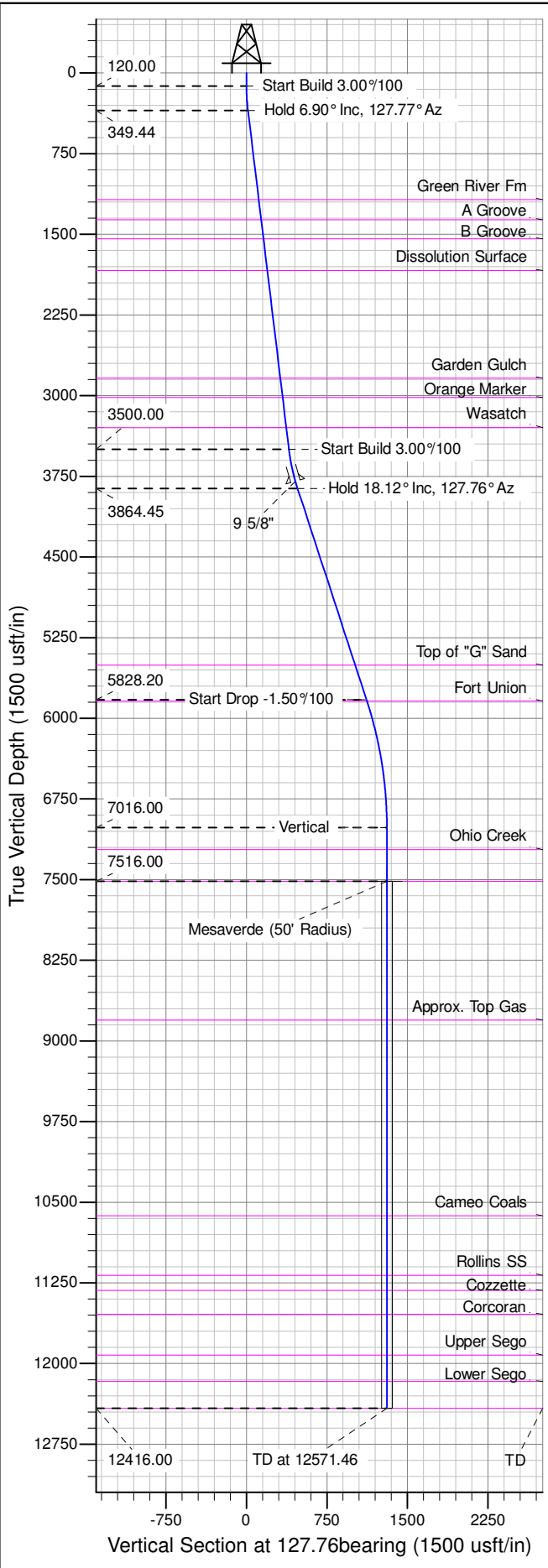




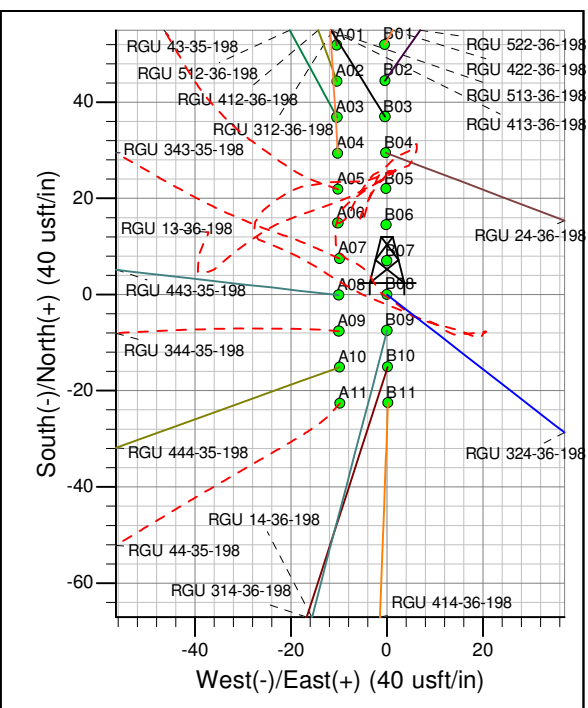
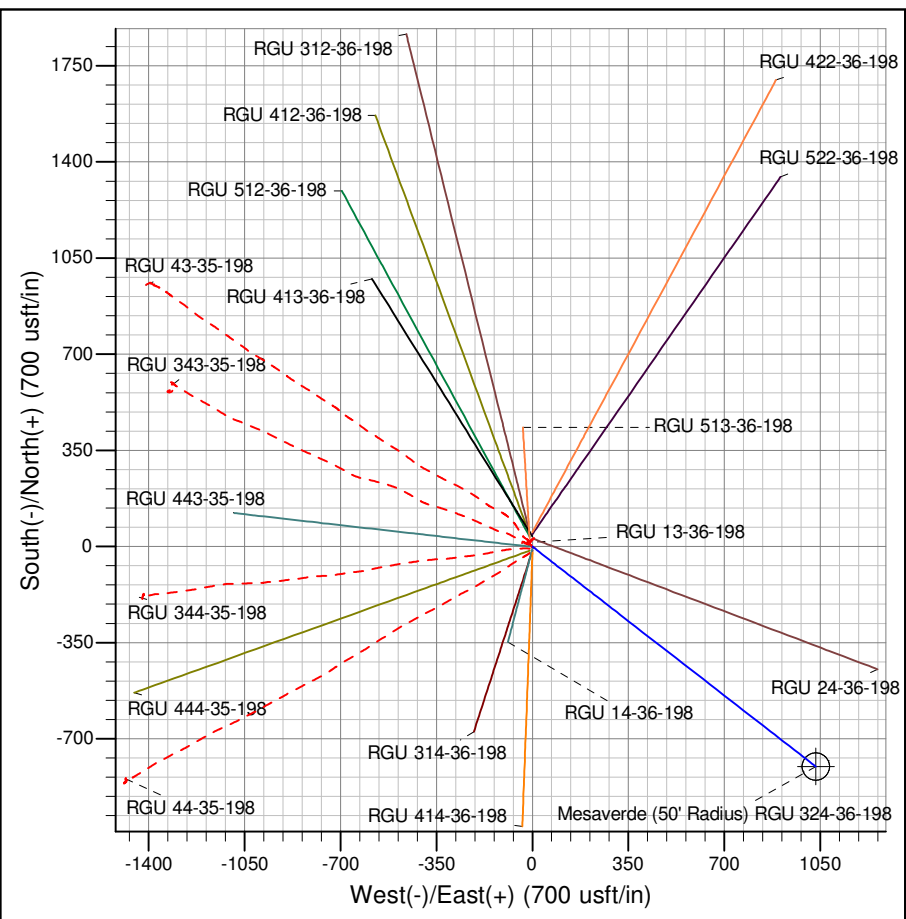
Well Name: RGU 324-36-198
Surface Location: RGU 13-36-198 Pad
North American Datum 1983 , US State Plane 1983 , Colorado Central Zone
Ground Elevation: 6680.00

+N/-S	+E/-W	Northing	Easting	Latitude	Longitude	Slot
0.00	0.00	1771311.70	2201056.50	39.916676	-108.348611	B08

KELLY BUSHING @ 6706.00usft (Cyclone 29 (26' RKB) mab)



ANNOTATIONS										
TVD	MD	Inc	Azi	+N/-S	+E/-W	Vsect	Departure	Annotation		
120.00	120.00	0.00	0.00	0.00	0.00	0.00	0.00	0.00	Start Build 3.00°/100	
349.44	350.00	6.90	127.77	-8.47	10.93	13.83	13.83	13.83	Hold 6.90° Inc, 127.77° Az	
3500.00	3523.54	6.90	127.76	-241.99	312.31	395.09	395.09	395.09	Start Build 3.00°/100	
3864.45	3897.45	18.12	127.76	-291.51	376.23	475.95	475.95	475.95	Hold 18.12° Inc, 127.76° Az	
5828.20	5963.64	18.12	127.76	-684.98	884.17	1118.46	1118.46	1118.46	Start Drop -1.50°/100	
7016.00	7171.46	0.00	0.00	-800.95	1033.88	1307.83	1307.83	1307.83	Vertical	
7516.00	7671.46	0.00	0.00	-800.95	1033.88	1307.83	1307.83	1307.83	Mesaverde	
12416.00	12571.46	0.00	0.00	-800.95	1033.88	1307.83	1307.83	1307.83	TD at 12571.46	



Azimuths to True North
Magnetic North: 10.14°

Magnetic Field
Strength: 52097.6snT
Dip Angle: 65.93°
Date: 9/19/2014
Model: IGRF2010

Project: RG 36-01S-098W
Site: RGU 13-36-198 Pad
Well: RGU 324-36-198
Design #1 19Sep14 mab