

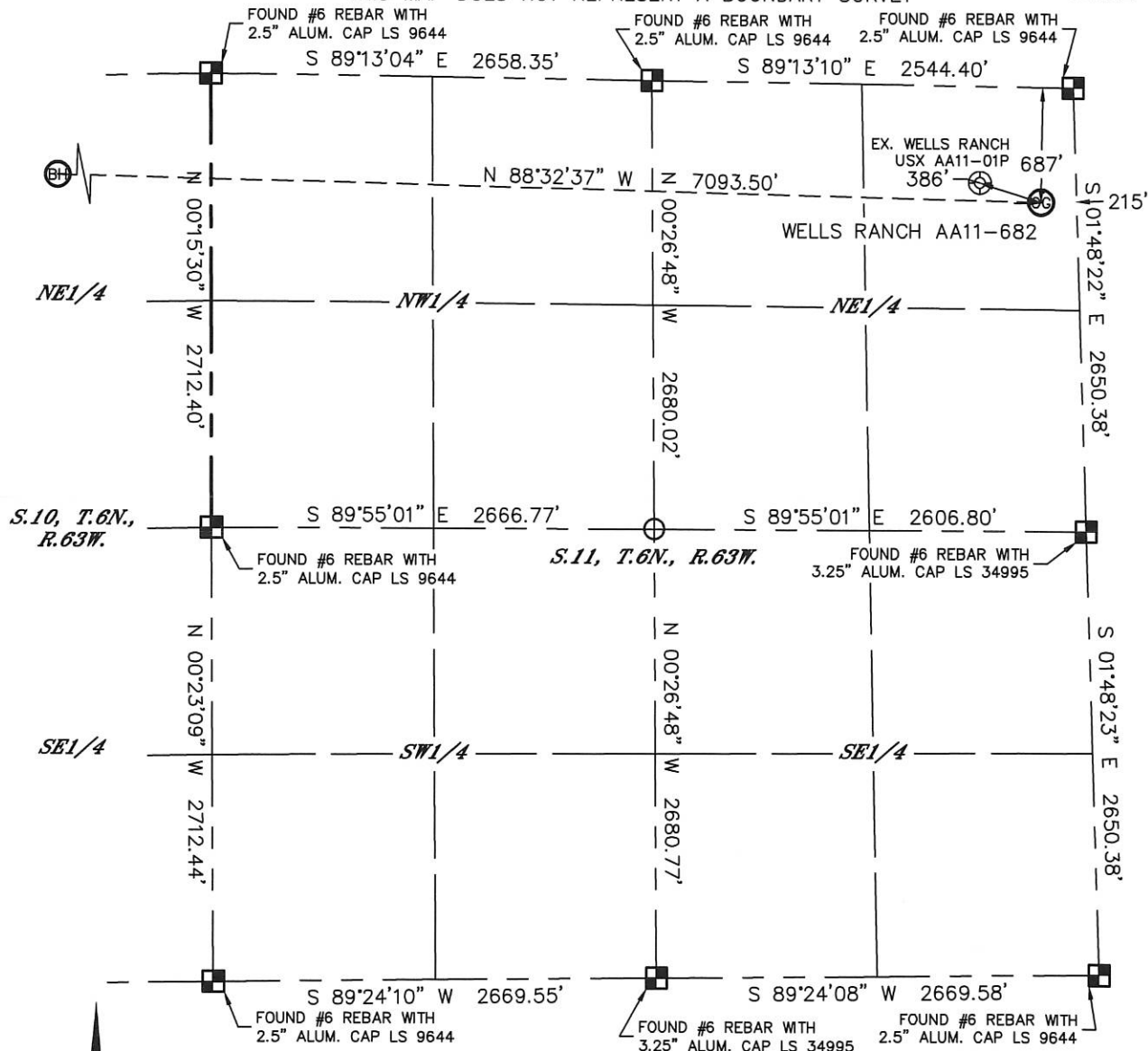


Lat40°, Inc. 6250 W. 10th Street, Unit 2, Greeley, CO 970-515-5294

WELL LOCATION CERTIFICATE

SECTION: 11
TOWNSHIP: 6N
RANGE: 63W

THIS MAP DOES NOT REPRESENT A BOUNDARY SURVEY



In accordance with a request from Greg Wilson with Noble Energy Inc. Lat40°, Inc. has determined the surface location of the WELLS RANCH AA11-682 to be 687' from the NORTH line and 215' from the EAST line of Section 11, Township 6 North, Range 63 West and the bottom hole to be 535' from the NORTH line and 2085' from the EAST line as measured at right angles from the section lines of Section 10, Township 6 North, Range 63 West of the Sixth Principal Meridian, County of Weld, State of Colorado.

I hereby state that this Well Location Certificate was prepared by me, or under my direct supervision, that the fieldwork was completed on 9-8-2014, for and on behalf of Noble Energy Inc. That this is not a Land Survey Plat or an Improvement Survey Plat, and that it is not to be relied upon for establishment of fence, building, or other future improvement lines.



NOTE:

- 1) Bearings shown are Grid Bearings of the Colorado State Plane Coordinate System, North Zone, North American Datum 1983. The lineal dimensions as contained herein are based upon the "U.S. Survey Foot."
 - 2) Ground elevations are based on an observed GPS elevation (NAVD 1988 DATUM).
 - 3) IMPROVEMENTS: See LOCATION DRAWING for all visible improvements within 500' of disturbed area.
 - 4) SURFACE USE: RANGELAND
 - 5) INSTRUMENT OPERATOR: WYATT HALL
 - 6) NEAREST EXISTING WELL: ±386' NW (WELLS RANCH USX AA11-01P)
- NEAREST CULTURAL ITEMS:
BUILDING: 5280'+
BUILDING UNIT: 5280'+
HIGH OCCUPANCY BUILDING UNIT: 5280'+
DESIGNATED OUTSIDE ACTIVITY AREA: 5280'+
PUBLIC ROAD: ±4990' W (CR 69)
ABOVEGROUND UTILITY: 5280'+
RAILROAD: 5280'+
PROPERTY LINE: ±215' E

SURFACE LOCATION

LAT: 40.50652N
LONG: 104.39529W
PDOP: 2.6
ELEV: 4856'
1/4,1/4: NENE

BOTTOM HOLE

LAT: 40.50725N
LONG: 104.42077W

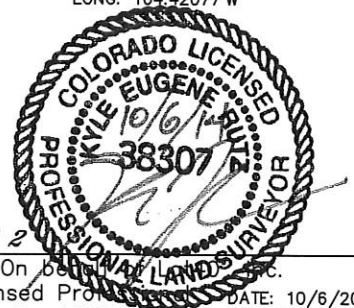
LEGEND

- = ALIQUOT MONUMENT AS DESCRIBED
- = CALCULATED POSITION

SHEET 1 OF 2

Kyle E. Rutz-On 687' from the NORTH line and 215' from the EAST line of Section 11, Township 6 North, Range 63 West and the bottom hole to be 535' from the NORTH line and 2085' from the EAST line as measured at right angles from the section lines of Section 10, Township 6 North, Range 63 West of the Sixth Principal Meridian, County of Weld, State of Colorado.
Colorado Licensed Professional Land Surveyor No. 38307

DATE: 10/6/2014
PROJECT#: 2014168



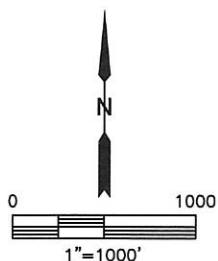
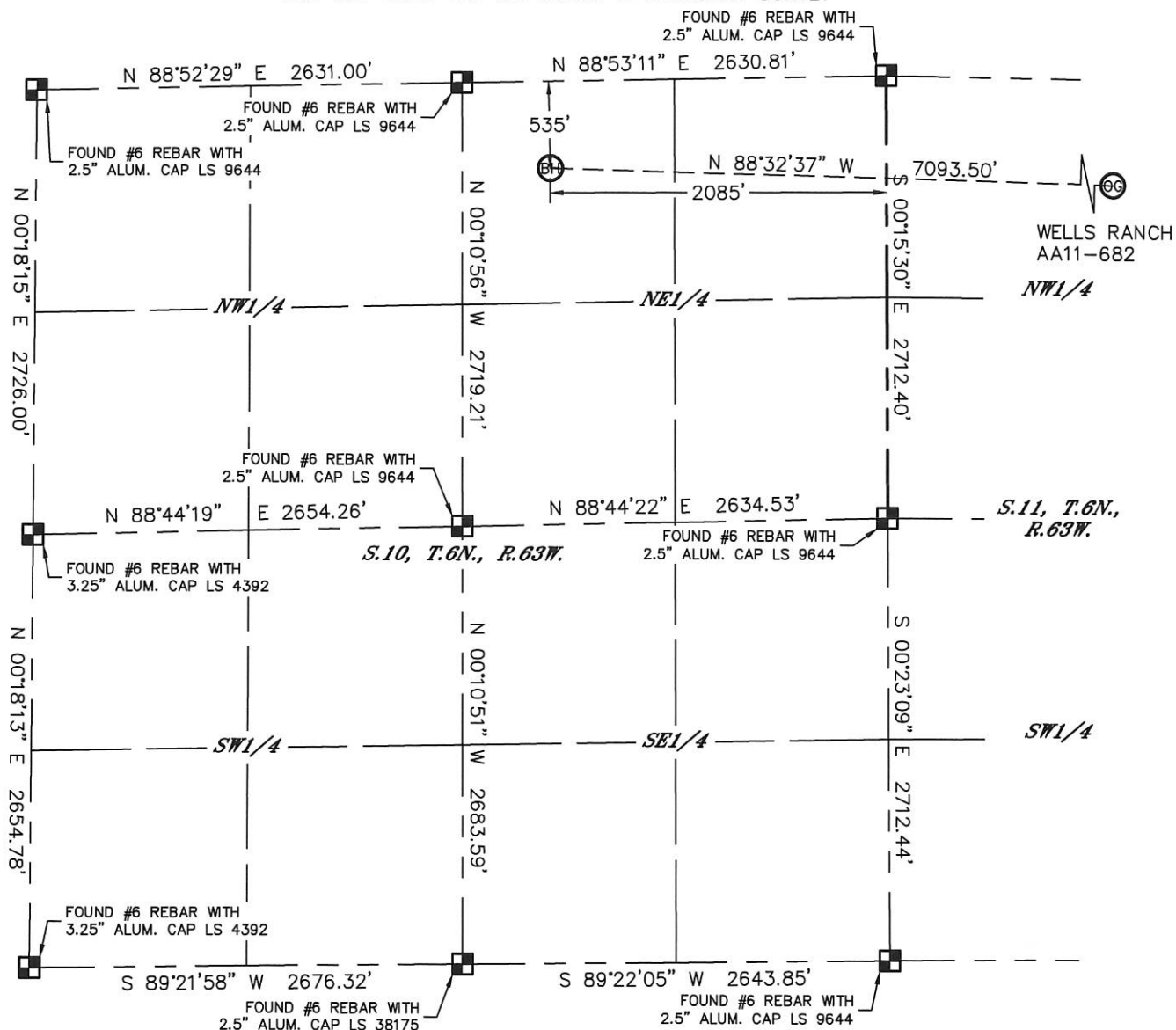


Lat40°, Inc. 6250 W. 10th Street, Unit 2, Greeley, CO 970-515-5294

WELL LOCATION CERTIFICATE

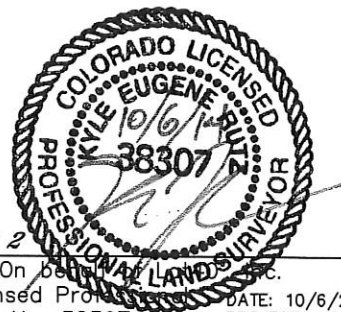
THIS MAP DOES NOT REPRESENT A BOUNDARY SURVEY

SECTION: 11
TOWNSHIP: 6N
RANGE: 63W



- LEGEND
- = ALIQUOT MONUMENT AS DESCRIBED
 - = CALCULATED POSITION

SHEET 2 OF 2
Kyle E. Rutz-On
Colorado Licensed Professional
Land Surveyor No. 38307



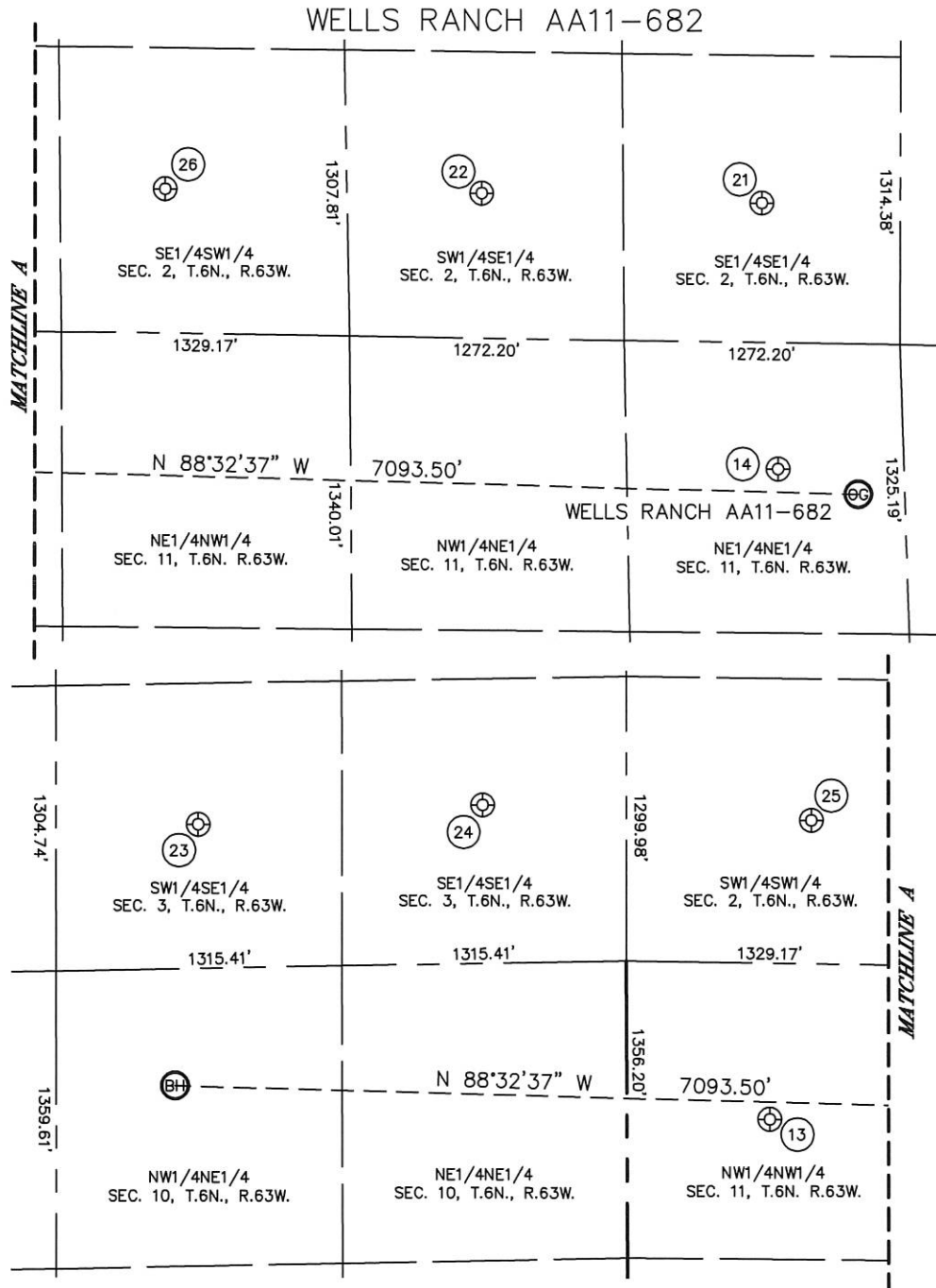
DATE: 10/6/2014
PROJECT#: 2014168



Lat40°, Inc. 6250 W. 10th Street, Unit 2, Greeley, CO 970-515-5294

SITE SKETCH

SECTION: 11
TOWNSHIP: 6N
RANGE: 63W



WELL NO.	WELL NAME	SHL FOOTAGE				SHL LAT°	SHL LONG°	PDOP	ELEV (FT.)	1/4/1/4
13	WELLS RANCH USX AA 11-04	715	FNL	657	FWL	40.50675	-104.41092	2.0	4796	NWNW
14	WELLS RANCH USX AA 11-01P	578	FNL	579	FEL	40.50684	-104.39661	2.0	4846	NENE
21	KOHLHOFF 44-2	639	FSL	639	FEL	40.51019	-104.39682	2.6	4831	SESE
22	KOHLHOFF 34-2	663	FSL	1936	FEL	40.51035	-104.40148	4.1	4804	SWSE
23	BROWN USX AA 3-15	658	FSL	1978	FEL	40.51053	-104.42034	3.0	4707	SWSE
24	BROWN USX AA 03-16	723	FSL	665	FEL	40.51073	-104.41562	2.9	4741	SESE
25	BROWN 14-2	653	FSL	851	FWL	40.51049	-104.41017	1.8	4787	SWSW
26	BROWN 24-2	661	FSL	1807	FWL	40.51045	-104.40674	1.8	4782	SESW

DATE: 11/03/2014
PROJECT#: 2014168