

**Anadarko**  
Petroleum Corporation



**BAKER  
HUGHES**

Coordinates are in feet referenced to Slo

Created by: precain on 1/6/2015

Facility Name	Cold Feet (US #)	Cold Mouth (US #)	Latitude	Longitude
---------------	------------------	-------------------	----------	-----------

WASH JES LEVIT TO MOWING (AT 300, 300127 GREENEAT 200-212 (402 FOL B 1750 FOL, JES.02))	01
WASH JES LEVIT TO MOWING (AT 300, 300127 GREENEAT 200-212 (402 FOL B 1750 FOL, JES.02))	01

Start MD (ft)	End MD (ft)	Tool	Model	Log Name/Comment	Wellbore
---------------	-------------	------	-------	------------------	----------

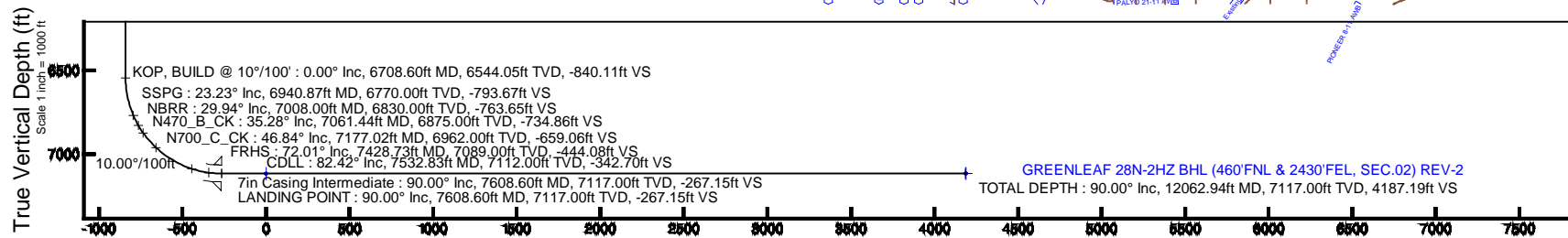
7000.00	12002.54	Navitar	Navitar (M1000R), 11 R	GREENEAF 200 2121
Well Profile Data				

Design Comment	MD (ft)	Inc (°)	Az (°)	TVD (ft)	Local N (ft)	Local E (ft)	DLS (°/100ft)	VS (ft)
----------------	---------	---------	--------	----------	--------------	--------------	---------------	---------

LANDING POINT	7000.00	50.000	555.400	7117.00	204.00	020.00	10.00	207.
TOTAL BERTH	12062.04	00.000	258.140	7117.00	1168.20	740.24	0.00	1187.

Name	MO (h)	TD (h)	Local M (h)	Local E (h)	Cold East (110 h)	Cold North (110 h)	Latitude	Longitude
------	--------	--------	-------------	-------------	-------------------	--------------------	----------	-----------

GREENLEAF ZON 2HZ BRL ON FLAT (450 FNL & 2450 FSL, SEC.02) REV.1	7/117.00	4105.30	1769.34	3242967.66	1307/100.00	40/1023.221 N	104/3749.847
GREENLEAF ZON 2HZ BRL ON FLAT (450 FNL & 2450 FSL, SEC.02) REV.1	7/117.00	4105.30	1769.34	3242967.66	1307/100.00	40/1023.221 N	104/3749.847



Vertical Section (ft)  
Azimuth 358.44° with reference 0.00 N. 0.00 E

# Planned Wellpath Report

GREENLEAF 28C-2HZ (REV-A.0) PWP

Page 1 of 6

## REFERENCE WELLPATH IDENTIFICATION

Operator	KERR-MCGEE OIL & GAS ONSHORE LP	Slot	SLOT#27 GREENLEAF 28C-2HZ (452' FSL & 1795' FEL, SEC.02)
Area	COLORADO	Well	GREENLEAF 28C-2HZ
Field	WELD COUNTY (KERR MCGEE)	Wellbore	GREENLEAF 28C-2HZ PWB
Facility	SEC.02-T2N-R65W		

## REPORT SETUP INFORMATION

Projection System	NAD83 / Lambert Colorado SP, Northern Zone (501), US feet	Software System	WellArchitect® 4.0.0
North Reference	True	User	Precain
Scale	0.999958	Report Generated	1/6/2015 at 10:34:03 AM
Convergence at slot	n/a	Database/Source file	WellArchitectDB/GREENLEAF_28C-2HZ_PWB.xml

## WELLPATH LOCATION

	Local coordinates		Grid coordinates		Geographic coordinates	
	North[ft]	East[ft]	Easting[US ft]	Northing[US ft]	Latitude	Longitude
Slot Location	-231.30	-1129.19	3243777.93	1302940.31	40°09'42.030"N	104°37'39.936"W
Facility Reference Pt			3244904.72	1303182.74	40°09'44.316"N	104°37'25.392"W
Field Reference Pt			3197771.84	1268891.29	40°04'09.600"N	104°47'36.000"W

## WELLPATH DATUM

Calculation method	Minimum curvature	XTREME 23 (16'KB) (RKB) to Facility Vertical Datum	4862.00ft
Horizontal Reference Pt	Slot	XTREME 23 (16'KB) (RKB) to Mean Sea Level	4862.00ft
Vertical Reference Pt	XTREME 23 (16'KB) (RKB)	XTREME 23 (16'KB) (RKB) to Mud Line at Slot (SLOT#27 GREENLEAF 28C-2HZ (452' FSL & 1795' FEL, SEC.02))	4862.00ft
MD Reference Pt	XTREME 23 (16'KB) (RKB)	Section Origin	N 0.00, E 0.00 ft
Field Vertical Reference	Mean Sea Level	Section Azimuth	358.44°

# Planned Wellpath Report

GREENLEAF 28C-2HZ (REV-A.0) PWP

Page 2 of 6

## REFERENCE WELLPATH IDENTIFICATION

Operator	KERR-MCGEE OIL & GAS ONSHORE LP	Slot	SLOT#27 GREENLEAF 28C-2HZ (452' FSL & 1795' FEL, SEC.02)
Area	COLORADO	Well	GREENLEAF 28C-2HZ
Field	WELD COUNTY (KERR MCGEE)	Wellbore	GREENLEAF 28C-2HZ PWB
Facility	SEC.02-T2N-R65W		

## WELLPATH DATA (141 stations) † = interpolated/extrapolated station

MD [ft]	Inclination [°]	Azimuth [°]	TVD [ft]	Vert Sect [ft]	North [ft]	East [ft]	Latitude	Longitude	DLS [°/100ft]	Comments
0.00†	0.000	70.600	0.00	0.00	0.00	0.00	40°09'42.030"N	104°37'39.936"W	0.00	
16.00	0.000	70.600	16.00	0.00	0.00	0.00	40°09'42.030"N	104°37'39.936"W	0.00	
129.00	0.200	70.600	129.00	0.06	0.07	0.19	40°09'42.031"N	104°37'39.934"W	0.18	
209.00	0.200	98.700	209.00	0.08	0.09	0.46	40°09'42.031"N	104°37'39.930"W	0.12	
289.00	0.400	93.200	289.00	0.03	0.05	0.87	40°09'42.031"N	104°37'39.925"W	0.25	
369.00	0.100	213.700	369.00	-0.05	-0.02	1.11	40°09'42.030"N	104°37'39.922"W	0.57	
449.00	0.300	238.000	449.00	-0.21	-0.19	0.90	40°09'42.028"N	104°37'39.924"W	0.27	
529.00	0.100	276.900	529.00	-0.31	-0.29	0.65	40°09'42.027"N	104°37'39.928"W	0.29	
609.00	0.100	278.300	609.00	-0.29	-0.27	0.51	40°09'42.027"N	104°37'39.929"W	0.00	
689.00	0.100	152.300	689.00	-0.34	-0.32	0.47	40°09'42.027"N	104°37'39.930"W	0.22	
769.00	0.100	152.700	769.00	-0.46	-0.45	0.54	40°09'42.026"N	104°37'39.929"W	0.00	
773.00†	0.100	152.202	773.00	-0.47	-0.45	0.54	40°09'42.026"N	104°37'39.929"W	0.02	Base Fox Hills
849.00	0.100	142.700	849.00	-0.58	-0.57	0.61	40°09'42.024"N	104°37'39.928"W	0.02	
929.00	0.100	169.600	929.00	-0.71	-0.69	0.67	40°09'42.023"N	104°37'39.927"W	0.06	
1009.00	0.400	247.500	1009.00	-0.88	-0.87	0.42	40°09'42.021"N	104°37'39.931"W	0.49	
1089.00	0.200	229.000	1088.99	-1.07	-1.06	0.06	40°09'42.019"N	104°37'39.935"W	0.27	
1169.00	0.300	228.300	1168.99	-1.29	-1.30	-0.20	40°09'42.017"N	104°37'39.939"W	0.13	
1258.00	0.700	224.900	1257.99	-1.81	-1.84	-0.76	40°09'42.012"N	104°37'39.946"W	0.45	TIE-INTO CATHEDRAL MWD SURVEYS
1358.00†	0.700	224.900	1357.98	-2.66	-2.70	-1.62	40°09'42.003"N	104°37'39.957"W	0.00	
1425.02	0.700	224.900	1425.00	-3.22	-3.28	-2.20	40°09'41.998"N	104°37'39.964"W	0.00	BEGIN NUDGE
1458.00†	1.355	220.182	1457.97	-3.65	-3.72	-2.59	40°09'41.993"N	104°37'39.969"W	2.00	
1558.00†	3.352	217.195	1557.88	-6.81	-6.95	-5.12	40°09'41.961"N	104°37'40.002"W	2.00	
1658.00†	5.351	216.438	1657.59	-12.76	-13.03	-9.66	40°09'41.901"N	104°37'40.060"W	2.00	
1758.00†	7.350	216.092	1756.97	-21.50	-21.95	-16.20	40°09'41.813"N	104°37'40.145"W	2.00	
1858.00†	9.350	215.893	1855.91	-33.02	-33.71	-24.73	40°09'41.697"N	104°37'40.255"W	2.00	
1958.00†	11.350	215.764	1954.27	-47.29	-48.27	-35.25	40°09'41.553"N	104°37'40.390"W	2.00	
2058.00†	13.350	215.673	2051.95	-64.31	-65.64	-47.73	40°09'41.381"N	104°37'40.551"W	2.00	
2158.00†	15.350	215.606	2148.83	-84.05	-85.78	-62.17	40°09'41.182"N	104°37'40.737"W	2.00	
2258.00†	17.350	215.554	2244.78	-106.49	-108.67	-78.55	40°09'40.956"N	104°37'40.948"W	2.00	
2358.00†	19.350	215.512	2339.69	-131.60	-134.29	-96.84	40°09'40.703"N	104°37'41.183"W	2.00	
2390.51	20.000	215.500	2370.30	-140.33	-143.20	-103.20	40°09'40.615"N	104°37'41.265"W	2.00	END NUDGE
2458.00†	20.000	215.500	2433.72	-158.75	-161.99	-116.60	40°09'40.429"N	104°37'41.438"W	0.00	
2558.00†	20.000	215.500	2527.69	-186.05	-189.84	-136.47	40°09'40.154"N	104°37'41.694"W	0.00	
2658.00†	20.000	215.500	2621.66	-213.34	-217.68	-156.33	40°09'39.879"N	104°37'41.949"W	0.00	
2758.00†	20.000	215.500	2715.63	-240.63	-245.53	-176.19	40°09'39.604"N	104°37'42.205"W	0.00	
2858.00†	20.000	215.500	2809.60	-267.92	-273.37	-196.05	40°09'39.329"N	104°37'42.461"W	0.00	
2958.00†	20.000	215.500	2903.57	-295.22	-301.22	-215.91	40°09'39.053"N	104°37'42.717"W	0.00	
3058.00†	20.000	215.500	2997.54	-322.51	-329.06	-235.77	40°09'38.778"N	104°37'42.973"W	0.00	
3158.00†	20.000	215.500	3091.51	-349.80	-356.91	-255.63	40°09'38.503"N	104°37'43.229"W	0.00	
3258.00†	20.000	215.500	3185.48	-377.09	-384.75	-275.49	40°09'38.228"N	104°37'43.484"W	0.00	
3358.00†	20.000	215.500	3279.45	-404.38	-412.59	-295.36	40°09'37.953"N	104°37'43.740"W	0.00	
3458.00†	20.000	215.500	3373.42	-431.68	-440.44	-315.22	40°09'37.678"N	104°37'43.996"W	0.00	
3558.00†	20.000	215.500	3467.38	-458.97	-468.28	-335.08	40°09'37.402"N	104°37'44.252"W	0.00	
3658.00†	20.000	215.500	3561.35	-486.26	-496.13	-354.94	40°09'37.127"N	104°37'44.508"W	0.00	
3758.00†	20.000	215.500	3655.32	-513.55	-523.97	-374.80	40°09'36.852"N	104°37'44.763"W	0.00	

# Planned Wellpath Report

GREENLEAF 28C-2HZ (REV-A.0) PWP

Page 3 of 6

## REFERENCE WELLPATH IDENTIFICATION

Operator	KERR-MCGEE OIL & GAS ONSHORE LP	Slot	SLOT#27 GREENLEAF 28C-2HZ (452' FSL & 1795' FEL, SEC.02)
Area	COLORADO	Well	GREENLEAF 28C-2HZ
Field	WELD COUNTY (KERR MCGEE)	Wellbore	GREENLEAF 28C-2HZ PWB
Facility	SEC.02-T2N-R65W		

## WELLPATH DATA (141 stations) † = interpolated/extrapolated station

MD [ft]	Inclination [°]	Azimuth [°]	TVD [ft]	Vert Sect [ft]	North [ft]	East [ft]	Latitude	Longitude	DLS [°/100ft]	Comments
3858.00†	20.000	215.500	3749.29	-540.85	-551.82	-394.66	40°09'36.577"N	104°37'45.019"W	0.00	
3958.00†	20.000	215.500	3843.26	-568.14	-579.66	-414.52	40°09'36.302"N	104°37'45.275"W	0.00	
4032.21†	20.000	215.500	3913.00	-588.39	-600.32	-429.26	40°09'36.098"N	104°37'45.465"W	0.00	Parkman
4058.00†	20.000	215.500	3937.23	-595.43	-607.50	-434.38	40°09'36.027"N	104°37'45.531"W	0.00	
4158.00†	20.000	215.500	4031.20	-622.72	-635.35	-454.25	40°09'35.751"N	104°37'45.787"W	0.00	
4250.37†	20.000	215.500	4118.00	-647.93	-661.07	-472.59	40°09'35.497"N	104°37'46.023"W	0.00	Sussex
4258.00†	20.000	215.500	4125.17	-650.01	-663.19	-474.11	40°09'35.476"N	104°37'46.042"W	0.00	
4358.00†	20.000	215.500	4219.14	-677.31	-691.04	-493.97	40°09'35.201"N	104°37'46.298"W	0.00	
4449.37	20.000	215.500	4305.00	-702.24	-716.48	-512.12	40°09'34.950"N	104°37'46.532"W	0.00	BEGIN DROP
4458.00†	19.827	215.500	4313.11	-704.59	-718.87	-513.82	40°09'34.926"N	104°37'46.554"W	2.00	
4558.00†	17.827	215.500	4407.76	-730.34	-745.14	-532.56	40°09'34.666"N	104°37'46.795"W	2.00	
4658.00†	15.827	215.500	4503.47	-753.44	-768.71	-549.37	40°09'34.434"N	104°37'47.012"W	2.00	
4758.00†	13.827	215.500	4600.14	-773.86	-789.54	-564.23	40°09'34.228"N	104°37'47.203"W	2.00	
4858.00†	11.827	215.500	4697.63	-791.58	-807.62	-577.12	40°09'34.049"N	104°37'47.369"W	2.00	
4958.00†	9.827	215.500	4795.85	-806.56	-822.91	-588.03	40°09'33.898"N	104°37'47.510"W	2.00	
5058.00†	7.827	215.500	4894.66	-818.81	-835.40	-596.94	40°09'33.774"N	104°37'47.624"W	2.00	
5158.00†	5.827	215.500	4993.95	-828.30	-845.08	-603.84	40°09'33.679"N	104°37'47.713"W	2.00	
5258.00†	3.827	215.500	5093.59	-835.01	-851.93	-608.73	40°09'33.611"N	104°37'47.776"W	2.00	
5358.00†	1.827	215.500	5193.46	-838.95	-855.95	-611.60	40°09'33.571"N	104°37'47.813"W	2.00	
5449.37	0.000	358.439	5284.82	-840.11	-857.13	-612.44	40°09'33.560"N	104°37'47.824"W	2.00	END DROP
5458.00†	0.000	358.439	5293.44	-840.11	-857.13	-612.44	40°09'33.560"N	104°37'47.824"W	0.00	
5558.00†	0.000	358.439	5393.44	-840.11	-857.13	-612.44	40°09'33.560"N	104°37'47.824"W	0.00	
5658.00†	0.000	358.439	5493.44	-840.11	-857.13	-612.44	40°09'33.560"N	104°37'47.824"W	0.00	
5758.00†	0.000	358.439	5593.44	-840.11	-857.13	-612.44	40°09'33.560"N	104°37'47.824"W	0.00	
5858.00†	0.000	358.439	5693.44	-840.11	-857.13	-612.44	40°09'33.560"N	104°37'47.824"W	0.00	
5958.00†	0.000	358.439	5793.44	-840.11	-857.13	-612.44	40°09'33.560"N	104°37'47.824"W	0.00	
6058.00†	0.000	358.439	5893.44	-840.11	-857.13	-612.44	40°09'33.560"N	104°37'47.824"W	0.00	
6158.00†	0.000	358.439	5993.44	-840.11	-857.13	-612.44	40°09'33.560"N	104°37'47.824"W	0.00	
6258.00†	0.000	358.439	6093.44	-840.11	-857.13	-612.44	40°09'33.560"N	104°37'47.824"W	0.00	
6358.00†	0.000	358.439	6193.44	-840.11	-857.13	-612.44	40°09'33.560"N	104°37'47.824"W	0.00	
6458.00†	0.000	358.439	6293.44	-840.11	-857.13	-612.44	40°09'33.560"N	104°37'47.824"W	0.00	
6558.00†	0.000	358.439	6393.44	-840.11	-857.13	-612.44	40°09'33.560"N	104°37'47.824"W	0.00	
6658.00†	0.000	358.439	6493.44	-840.11	-857.13	-612.44	40°09'33.560"N	104°37'47.824"W	0.00	
6708.60	0.000	358.439	6544.05	-840.11	-857.13	-612.44	40°09'33.560"N	104°37'47.824"W	0.00	KOP, BUILD @ 10°/100'
6758.00†	4.940	358.439	6593.38	-837.98	-855.01	-612.50	40°09'33.581"N	104°37'47.825"W	10.00	
6858.00†	14.940	358.439	6691.76	-820.74	-837.77	-612.97	40°09'33.751"N	104°37'47.831"W	10.00	
6940.87†	23.226	358.439	6770.00	-793.67	-810.71	-613.71	40°09'34.018"N	104°37'47.840"W	10.00	SSPG
6958.00†	24.940	358.439	6785.64	-786.68	-803.73	-613.90	40°09'34.087"N	104°37'47.843"W	10.00	
7008.00†	29.939	358.439	6830.00	-763.65	-780.70	-614.52	40°09'34.315"N	104°37'47.851"W	10.00	NBRR
7058.00†	34.940	358.439	6872.19	-736.84	-753.90	-615.26	40°09'34.580"N	104°37'47.860"W	10.00	
7061.44†	35.284	358.439	6875.00	-734.86	-751.92	-615.31	40°09'34.599"N	104°37'47.861"W	10.00	N470_B_CK
7158.00†	44.940	358.439	6948.76	-672.72	-689.80	-617.00	40°09'35.213"N	104°37'47.883"W	10.00	
7177.02†	46.842	358.439	6962.00	-659.06	-676.15	-617.37	40°09'35.348"N	104°37'47.888"W	10.00	N700_C_CK
7258.00†	54.940	358.439	7013.04	-596.28	-613.39	-619.08	40°09'35.968"N	104°37'47.910"W	10.00	
7358.00†	64.940	358.439	7063.07	-509.84	-526.99	-621.44	40°09'36.822"N	104°37'47.940"W	10.00	

# Planned Wellpath Report

GREENLEAF 28C-2HZ (REV-A.0) PWP

Page 4 of 6

## REFERENCE WELLPATH IDENTIFICATION

Operator	KERR-MCGEE OIL & GAS ONSHORE LP	Slot	SLOT#27 GREENLEAF 28C-2HZ (452' FSL & 1795' FEL, SEC.02)
Area	COLORADO	Well	GREENLEAF 28C-2HZ
Field	WELD COUNTY (KERR MCGEE)	Wellbore	GREENLEAF 28C-2HZ PWB
Facility	SEC.02-T2N-R65W		

## WELLPATH DATA (141 stations) † = interpolated/extrapolated station

MD [ft]	Inclination [°]	Azimuth [°]	TVD [ft]	Vert Sect [ft]	North [ft]	East [ft]	Latitude	Longitude	DLS [°/100ft]	Comments
7428.73†	72.013	358.439	7089.00	-444.08	-461.25	-623.23	40°09'37.472"N	104°37'47.963"W	10.00	FRHS
7458.00†	74.940	358.439	7097.32	-416.02	-433.21	-623.99	40°09'37.749"N	104°37'47.973"W	10.00	
7532.83†	82.423	358.439	7112.00	-342.70	-359.91	-625.99	40°09'38.473"N	104°37'47.999"W	10.00	CDLL
7558.00†	84.940	358.439	7114.77	-317.69	-334.91	-626.67	40°09'38.720"N	104°37'48.007"W	10.00	
7608.60	90.000	358.439	7117.00	-267.15	-284.39	-628.05	40°09'39.220"N	104°37'48.025"W	10.00	LANDING POINT
7658.00†	90.000	358.439	7117.00	-217.75	-235.01	-629.40	40°09'39.708"N	104°37'48.043"W	0.00	
7758.00†	90.000	358.439	7117.00	-117.75	-135.04	-632.12	40°09'40.695"N	104°37'48.078"W	0.00	
7858.00†	90.000	358.439	7117.00	-17.75	-35.08	-634.84	40°09'41.683"N	104°37'48.113"W	0.00	
7958.00†	90.000	358.439	7117.00	82.25	64.88	-637.57	40°09'42.671"N	104°37'48.148"W	0.00	
8058.00†	90.000	358.439	7117.00	182.25	164.84	-640.29	40°09'43.659"N	104°37'48.183"W	0.00	
8158.00†	90.000	358.439	7117.00	282.25	264.81	-643.02	40°09'44.647"N	104°37'48.218"W	0.00	
8258.00†	90.000	358.439	7117.00	382.25	364.77	-645.74	40°09'45.635"N	104°37'48.253"W	0.00	
8358.00†	90.000	358.439	7117.00	482.25	464.73	-648.46	40°09'46.622"N	104°37'48.288"W	0.00	
8458.00†	90.000	358.439	7117.00	582.25	564.70	-651.19	40°09'47.610"N	104°37'48.324"W	0.00	
8558.00†	90.000	358.439	7117.00	682.25	664.66	-653.91	40°09'48.598"N	104°37'48.359"W	0.00	
8658.00†	90.000	358.439	7117.00	782.25	764.62	-656.63	40°09'49.586"N	104°37'48.394"W	0.00	
8758.00†	90.000	358.439	7117.00	882.25	864.58	-659.36	40°09'50.574"N	104°37'48.429"W	0.00	
8858.00†	90.000	358.439	7117.00	982.25	964.55	-662.08	40°09'51.562"N	104°37'48.464"W	0.00	
8958.00†	90.000	358.439	7117.00	1082.25	1064.51	-664.80	40°09'52.549"N	104°37'48.499"W	0.00	
9058.00†	90.000	358.439	7117.00	1182.25	1164.47	-667.53	40°09'53.537"N	104°37'48.534"W	0.00	
9158.00†	90.000	358.439	7117.00	1282.25	1264.44	-670.25	40°09'54.525"N	104°37'48.569"W	0.00	
9258.00†	90.000	358.439	7117.00	1382.25	1364.40	-672.97	40°09'55.513"N	104°37'48.604"W	0.00	
9358.00†	90.000	358.440	7117.00	1482.25	1464.36	-675.70	40°09'56.501"N	104°37'48.640"W	0.00	
9458.00†	90.000	358.440	7117.00	1582.25	1564.32	-678.42	40°09'57.489"N	104°37'48.675"W	0.00	
9558.00†	90.000	358.440	7117.00	1682.25	1664.29	-681.14	40°09'58.476"N	104°37'48.710"W	0.00	
9658.00†	90.000	358.440	7117.00	1782.25	1764.25	-683.87	40°09'59.464"N	104°37'48.745"W	0.00	
9758.00†	90.000	358.440	7117.00	1882.25	1864.21	-686.59	40°10'00.452"N	104°37'48.780"W	0.00	
9858.00†	90.000	358.440	7117.00	1982.25	1964.18	-689.31	40°10'01.440"N	104°37'48.815"W	0.00	
9958.00†	90.000	358.440	7117.00	2082.25	2064.14	-692.04	40°10'02.428"N	104°37'48.850"W	0.00	
10058.00†	90.000	358.440	7117.00	2182.25	2164.10	-694.76	40°10'03.416"N	104°37'48.885"W	0.00	
10158.00†	90.000	358.440	7117.00	2282.25	2264.06	-697.48	40°10'04.403"N	104°37'48.920"W	0.00	
10258.00†	90.000	358.440	7117.00	2382.25	2364.03	-700.20	40°10'05.391"N	104°37'48.956"W	0.00	
10358.00†	90.000	358.440	7117.00	2482.25	2463.99	-702.93	40°10'06.379"N	104°37'48.991"W	0.00	
10458.00†	90.000	358.440	7117.00	2582.25	2563.95	-705.65	40°10'07.367"N	104°37'49.026"W	0.00	
10558.00†	90.000	358.440	7117.00	2682.25	2663.92	-708.37	40°10'08.355"N	104°37'49.061"W	0.00	
10658.00†	90.000	358.440	7117.00	2782.25	2763.88	-711.10	40°10'09.343"N	104°37'49.096"W	0.00	
10758.00†	90.000	358.440	7117.00	2882.25	2863.84	-713.82	40°10'10.331"N	104°37'49.131"W	0.00	
10858.00†	90.000	358.440	7117.00	2982.25	2963.81	-716.54	40°10'11.318"N	104°37'49.166"W	0.00	
10958.00†	90.000	358.440	7117.00	3082.25	3063.77	-719.26	40°10'12.306"N	104°37'49.201"W	0.00	
11058.00†	90.000	358.440	7117.00	3182.25	3163.73	-721.98	40°10'13.294"N	104°37'49.236"W	0.00	
11158.00†	90.000	358.440	7117.00	3282.25	3263.69	-724.71	40°10'14.282"N	104°37'49.272"W	0.00	
11258.00†	90.000	358.440	7117.00	3382.25	3363.66	-727.43	40°10'15.270"N	104°37'49.307"W	0.00	
11358.00†	90.000	358.440	7117.00	3482.25	3463.62	-730.15	40°10'16.258"N	104°37'49.342"W	0.00	
11458.00†	90.000	358.440	7117.00	3582.25	3563.58	-732.87	40°10'17.245"N	104°37'49.377"W	0.00	
11558.00†	90.000	358.440	7117.00	3682.25	3663.55	-735.60	40°10'18.233"N	104°37'49.412"W	0.00	



# Planned Wellpath Report

GREENLEAF 28C-2HZ (REV-A.0) PWP

Page 5 of 6

## REFERENCE WELLPATH IDENTIFICATION

Operator	KERR-MCGEE OIL & GAS ONSHORE LP	Slot	SLOT#27 GREENLEAF 28C-2HZ (452' FSL & 1795' FEL, SEC.02)
Area	COLORADO	Well	GREENLEAF 28C-2HZ
Field	WELD COUNTY (KERR MCGEE)	Wellbore	GREENLEAF 28C-2HZ PWB
Facility	SEC.02-T2N-R65W		

## WELLPATH DATA (141 stations) † = interpolated/extrapolated station

MD [ft]	Inclination [°]	Azimuth [°]	TVD [ft]	Vert Sect [ft]	North [ft]	East [ft]	Latitude	Longitude	DLS [°/100ft]	Comments
11658.00†	90.000	358.440	7117.00	3782.25	3763.51	-738.32	40°10'19.221"N	104°37'49.447"W	0.00	
11758.00†	90.000	358.440	7117.00	3882.25	3863.47	-741.04	40°10'20.209"N	104°37'49.482"W	0.00	
11858.00†	90.000	358.440	7117.00	3982.25	3963.43	-743.76	40°10'21.197"N	104°37'49.517"W	0.00	
11958.00†	90.000	358.440	7117.00	4082.25	4063.40	-746.48	40°10'22.185"N	104°37'49.552"W	0.00	
12058.00†	90.000	358.440	7117.00	4182.25	4163.36	-749.21	40°10'23.172"N	104°37'49.587"W	0.00	
12062.94	90.000	358.440	7117.00 <sup>1</sup>	4187.19	4168.30	-749.34	40°10'23.221"N	104°37'49.589"W	0.00	TOTAL DEPTH

## HOLE & CASING SECTIONS - Ref Wellbore: GREENLEAF 28C-2HZ PWB Ref Wellpath: GREENLEAF 28C-2HZ (REV-A.0) PWP

String/Diameter	Start MD [ft]	End MD [ft]	Interval [ft]	Start TVD [ft]	End TVD [ft]	Start N/S [ft]	Start E/W [ft]	End N/S [ft]	End E/W [ft]
13.5in Open Hole	16.00	1258.00	1242.00	16.00	1257.99	0.00	0.00	-1.84	-0.76
13.5in Open Hole	1258.00	1303.00	45.00	1257.99	1302.99	-1.84	-0.76	-2.22	-1.15
9.625in Casing Surface	16.00	1293.00	1277.00	16.00	1292.99	0.00	0.00	-2.14	-1.06
8.75in Open Hole	1303.00	7608.60	6305.60	1302.99	7117.00	-2.22	-1.15	-284.39	-628.05
7in Casing Intermediate	16.00	7608.60	7592.60	16.00	7117.00	0.00	0.00	-284.39	-628.05
6.125in Open Hole	7608.60	12062.94	4454.34	7117.00	7117.00	-284.39	-628.05	4168.30	-749.34
4.5in Open Hole	16.00	12062.94	12046.94	16.00	7117.00	0.00	0.00	4168.30	-749.34

## TARGETS

Name	MD [ft]	TVD [ft]	North [ft]	East [ft]	Grid East [US ft]	Grid North [US ft]	Latitude	Longitude	Shape
SEC.02-T2N-R65W LINES		0.00	0.00	0.00	3243777.93	1302940.31	40°09'42.030"N	104°37'39.936"W	polygon
1) GREENLEAF 28N-2HZ BHL (460'FNL & 2430'FEL, SEC.02) REV-2	12062.94	7117.00	4168.30	-749.34	3242987.66	1307100.85	40°10'23.221"N	104°37'49.589"W	point
GREENLEAF 28N-2HZ BHL ON PLAT (460'FNL & 2450'FEL, SEC.02) REV-1		7117.00	4168.30	-769.34	3242967.66	1307100.65	40°10'23.221"N	104°37'49.847"W	point
GREENLEAF 28C-2HZ LANDBOX		7118.00	0.00	0.00	3243777.93	1302940.31	40°09'42.030"N	104°37'39.936"W	polygon

## SURVEY PROGRAM - Ref Wellbore: GREENLEAF 28C-2HZ PWB Ref Wellpath: GREENLEAF 28C-2HZ (REV-A.0) PWP

Start MD [ft]	End MD [ft]	Positional Uncertainty Model	Log Name/Comment	Wellbore
16.00	1258.00	ISCWSA MWD, Rev. 2 (Standard)		GREENLEAF 28C-2HZ AWB
1258.00	7608.60	NaviTrak (MAGCORR,IFR)		GREENLEAF 28C-2HZ PWB
7608.60	12062.94	NaviTrak (MAGCORR,IFR)		GREENLEAF 28C-2HZ PWB

# Planned Wellpath Report

GREENLEAF 28C-2HZ (REV-A.0) PWP

Page 6 of 6

## REFERENCE WELLPATH IDENTIFICATION

Operator	KERR-MCGEE OIL & GAS ONSHORE LP	Slot	SLOT#27 GREENLEAF 28C-2HZ (452' FSL & 1795' FEL, SEC.02)
Area	COLORADO	Well	GREENLEAF 28C-2HZ
Field	WELD COUNTY (KERR MCGEE)	Wellbore	GREENLEAF 28C-2HZ PWB
Facility	SEC.02-T2N-R65W		

## WELLPATH COMMENTS

MD [ft]	Inclination [°]	Azimuth [°]	TVD [ft]	Comment
773.00	0.100	152.202	773.00	Base Fox Hills
4032.21	20.000	215.500	3913.00	Parkman
4250.37	20.000	215.500	4118.00	Sussex
6940.87	23.226	358.439	6770.00	SSPG
7008.00	29.939	358.439	6830.00	NBRR
7061.44	35.284	358.439	6875.00	N470_B_CK
7177.02	46.842	358.439	6962.00	N700_C_CK
7428.73	72.013	358.439	7089.00	FRHS
7532.83	82.423	358.439	7112.00	CDLL

## DESIGN COMMENTS

MD [ft]	Inclination [°]	Azimuth [°]	TVD [ft]	Comment
1258.00	0.700	224.900	1257.99	TIE-INTO CATHEDRAL MWD SURVEYS
1425.02	0.700	224.900	1425.00	BEGIN NUDGE
2390.51	20.000	215.500	2370.30	END NUDGE
4449.37	20.000	215.500	4305.00	BEGIN DROP
5449.37	0.000	358.439	5284.82	END DROP
6708.60	0.000	358.439	6544.05	KOP, BUILD @ 10°/100'
7608.60	90.000	358.439	7117.00	LANDING POINT
12062.94	90.000	358.440	7117.00	TOTAL DEPTH