

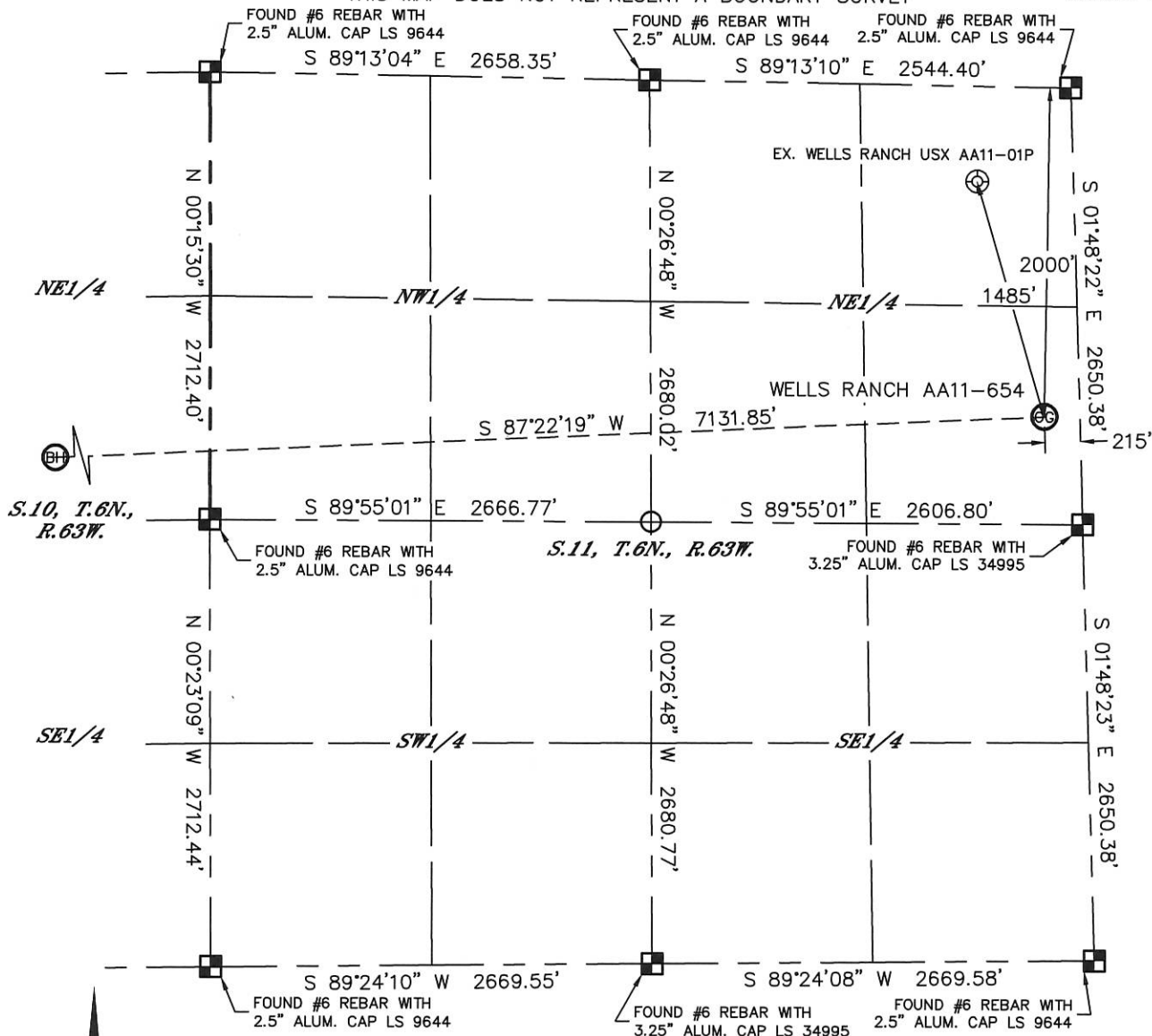


Lat40°, Inc. 6250 W. 10th Street, Unit 2, Greeley, CO 970-515-5294

WELL LOCATION CERTIFICATE

SECTION: 11
TOWNSHIP: 6N
RANGE: 63W

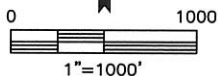
THIS MAP DOES NOT REPRESENT A BOUNDARY SURVEY



In accordance with a request from Greg Wilson with Noble Energy Inc.

Lat40°, Inc. has determined the surface location of the WELLS RANCH AA11-654 to be 2000' from the NORTH line and 215' from the EAST line of Section 11, Township 6 North, Range 63 West and the bottom hole to be 2355' from the NORTH line and 2085' from the EAST line as measured at right angles from the section lines of Section 10, Township 6 North, Range 63 West of the Sixth Principal Meridian, County of Weld, State of Colorado.

I hereby state that this Well Location Certificate was prepared by me, or under my direct supervision, that the fieldwork was completed on 9-8-2014, for and on behalf of Noble Energy Inc. That this is not a Land Survey Plat or an Improvement Survey Plat, and that it is not to be relied upon for establishment of fence, building, or other future improvement lines.



NOTE:

- 1) Bearings shown are Grid Bearings of the Colorado State Plane Coordinate System, North Zone, North American Datum 1983. The lineal dimensions as contained herein are based upon the "U.S. Survey Foot."
 - 2) Ground elevations are based on an observed GPS elevation (NAVD 1988 DATUM).
 - 3) IMPROVEMENTS: See LOCATION DRAWING for all visible improvements within 500' of disturbed area.
 - 4) SURFACE USE: RANGELAND
 - 5) INSTRUMENT OPERATOR: WYATT HALL
 - 6) NEAREST EXISTING WELL: ±1485' NW (WELLS RANCH USX AA11-01P)
- NEAREST CULTURAL ITEMS:
BUILDING: 5280'+
BUILDING UNIT: 5280'+
HIGH OCCUPANCY BUILDING UNIT: 5280'+
DESIGNATED OUTSIDE ACTIVITY AREA: 5280'+
PUBLIC ROAD: ±5026' W (CR 69)
ABOVEGROUND UTILITY: 5280'+
RAILROAD: 5280'+
PROPERTY LINE: ±215' E

SURFACE LOCATION

LAT: 40.50291N
LONG: 104.39520W
PDOP: 2.2
ELEV: 4868'
1/4, 1/4: SENE

BOTTOM HOLE

LAT: 40.50226N
LONG: 104.42082W

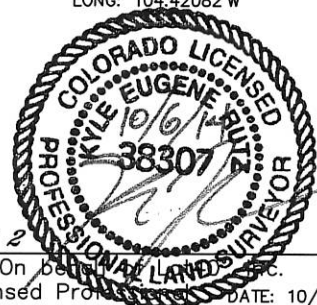
LEGEND

- = ALIQUOT MONUMENT AS DESCRIBED
○ = CALCULATED POSITION

SHEET 1 OF 2

Kyle E. Rutz-On behalf of Lat40°, Inc.
Colorado Licensed Professional Land Surveyor No. 38307

DATE: 10/6/2014
PROJECT#: 2014168



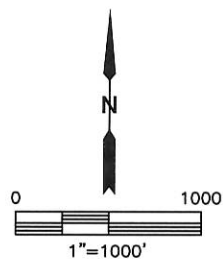
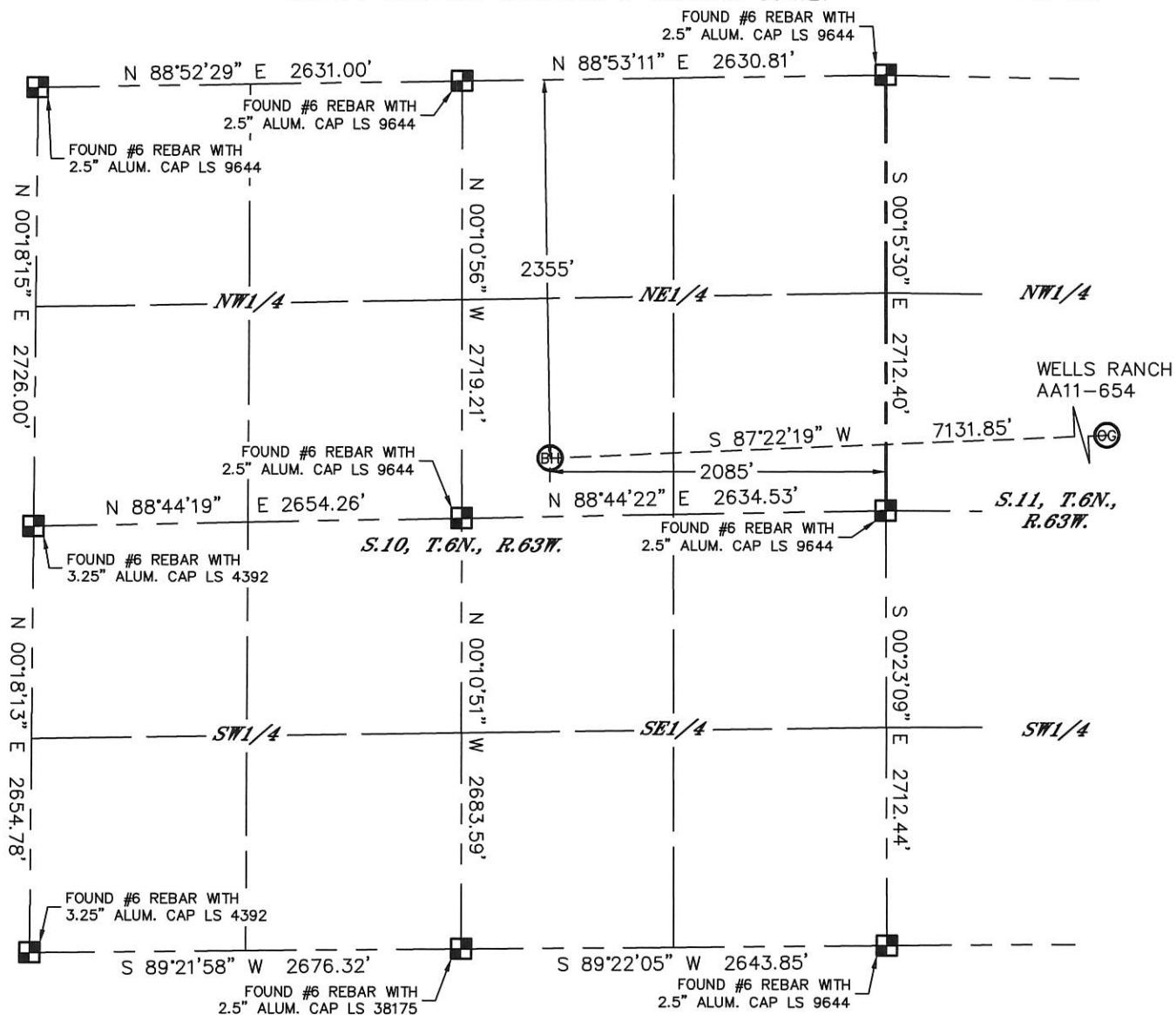


Lat40°, Inc. 6250 W. 10th Street, Unit 2, Greeley, CO 970-515-5294

WELL LOCATION CERTIFICATE

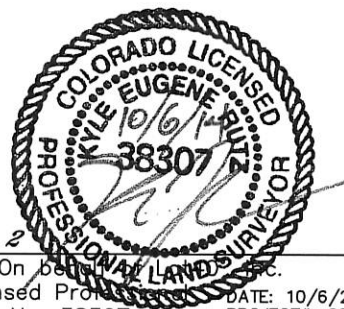
THIS MAP DOES NOT REPRESENT A BOUNDARY SURVEY

SECTION: 11
TOWNSHIP: 6N
RANGE: 63W



LEGEND

- = ALIQUOT MONUMENT AS DESCRIBED
- = CALCULATED POSITION



SHEET 2 OF 2

Kyle E. Rutz-On, Inc.
Colorado Licensed Professional
Land Surveyor No. 38307

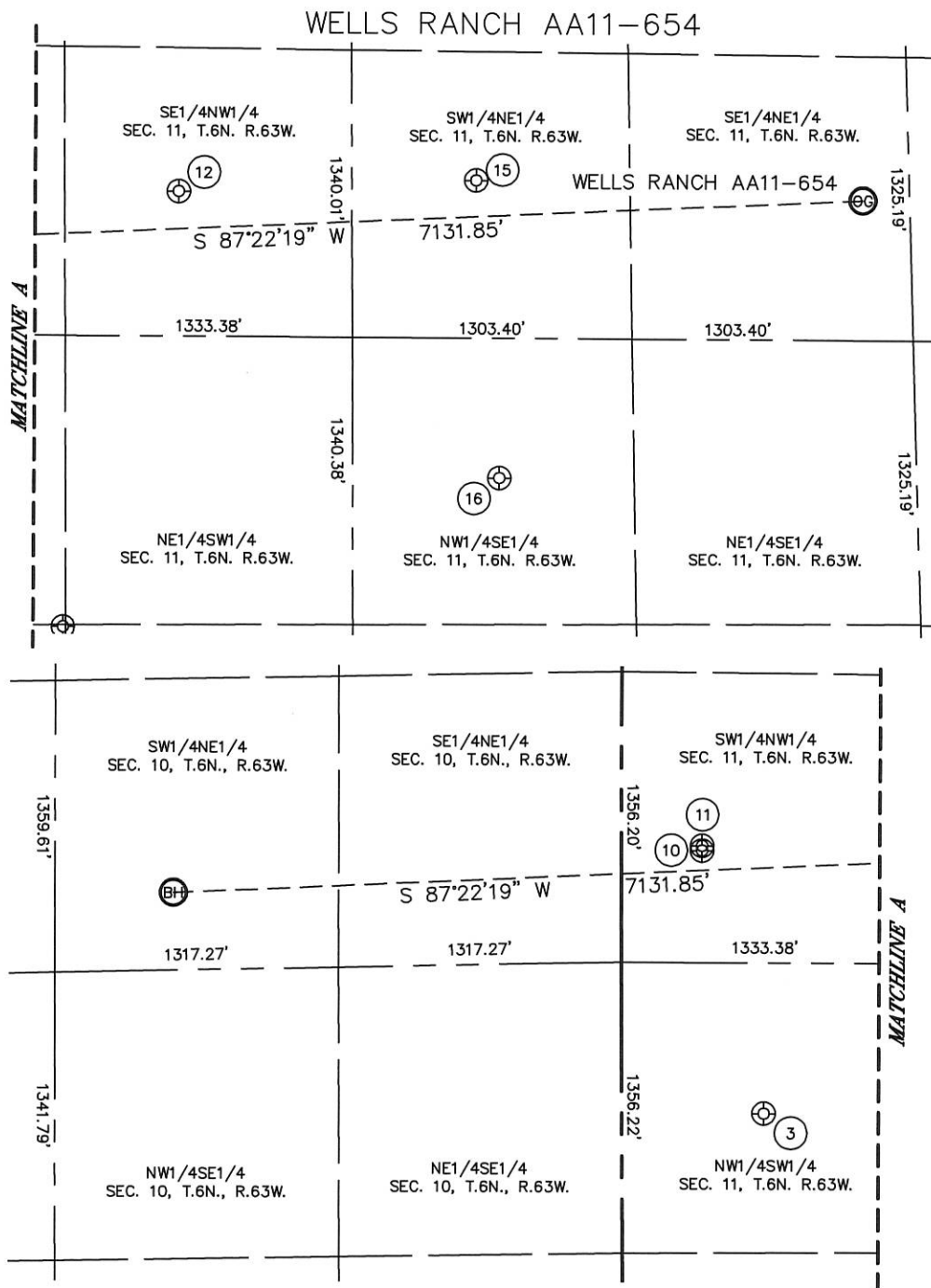
DATE: 10/6/2014
PROJECT#: 2014168



Lat40 , Inc. 6250 W. 10th Street, Unit 2, Greeley, CO 970-515-5294

SITE SKETCH

SECTION: 11
TOWNSHIP: 6N
RANGE: 63W



WELL NO.	WELL NAME	SHL FOOTAGE				SHL LAT°	SHL LONG°	PDOP	ELEV (FT.)	1/4/1/4
3	WELLS RANCH USX AA 11-12	1997	FSL	659	FWL	40.49935	-104.41098	1.9	4784	NWSW
10	WELLS RANCH USX AA 11-65HN	2184	FNL	375	FWL	40.50274	-104.41198	1.9	4781	SWNW
11	WELLS RANCH USX AA 11-67HN	2162	FNL	373	FWL	40.50280	-104.41198	2.1	4781	SWNW
12	WELLS RANCH USX AA 11-06	2014	FNL	1861	FWL	40.50310	-104.40663	1.8	4808	SENW
15	WELLS RANCH USX AA 11-07	1938	FNL	2008	FEL	40.50321	-104.40166	1.8	4830	SWNE
16	WELLS RANCH USX AA 11-10P	2020	FSL	1937	FEL	40.49940	-104.40131	1.8	4834	NWSE

DATE: 10/6/2014
PROJECT#: 2014168