

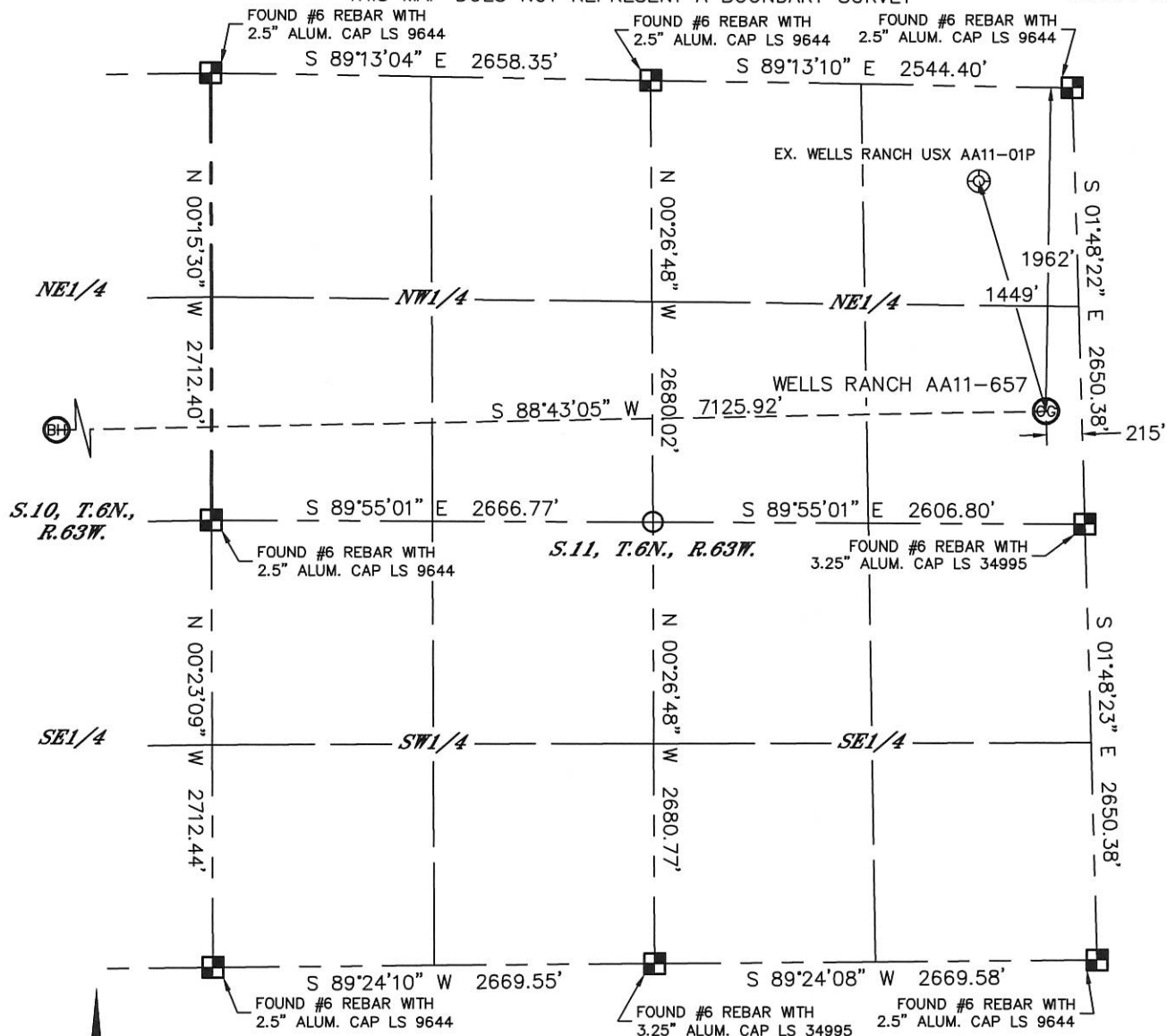


Lat40°, Inc. 6250 W. 10th Street, Unit 2, Greeley, CO 970-515-5294

# WELL LOCATION CERTIFICATE

SECTION: 11  
TOWNSHIP: 6N  
RANGE: 63W

THIS MAP DOES NOT REPRESENT A BOUNDARY SURVEY



In accordance with a request from Greg Wilson with Noble Energy Inc.

Lat40°, Inc. has determined the surface location of the WELLS RANCH AA11-657 to be 1962' from the NORTH line and 215' from the EAST line of Section 11, Township 6 North, Range 63 West and the bottom hole to be 2150' from the NORTH line and 2085' from the EAST line as measured at right angles from the section lines of Section 10, Township 6 North, Range 63 West of the Sixth Principal Meridian, County of Weld, State of Colorado.

I hereby state that this Well Location Certificate was prepared by me, or under my direct supervision, that the fieldwork was completed on 9-8-2014, for and on behalf of Noble Energy Inc. That this is not a Land Survey Plat or an Improvement Survey Plat, and that it is not to be relied upon for establishment of fence, building, or other future improvement lines.



## NOTE:

- 1) Bearings shown are Grid Bearings of the Colorado State Plane Coordinate System, North Zone, North American Datum 1983. The lineal dimensions as contained herein are based upon the "U.S. Survey Foot."
  - 2) Ground elevations are based on an observed GPS elevation (NAVD 1988 DATUM).
  - 3) IMPROVEMENTS: See LOCATION DRAWING for all visible improvements within 500' of disturbed area.
  - 4) SURFACE USE: RANGELAND
  - 5) INSTRUMENT OPERATOR: WYATT HALL
  - 6) NEAREST EXISTING WELL: ±1449' NW (WELLS RANCH USX AA11-01P)
- NEAREST CULTURAL ITEMS:  
BUILDING: 5280'+  
BUILDING UNIT: 5280'+  
HIGH OCCUPANCY BUILDING UNIT: 5280'+  
DESIGNATED OUTSIDE ACTIVITY AREA: 5280'+  
PUBLIC ROAD: ±5025' W (CR 69)  
ABOVEGROUND UTILITY: 5280'+  
RAILROAD: 5280'+  
PROPERTY LINE: ±215' E

## SURFACE LOCATION

LAT: 40.50302°N  
LONG: 104.39520°W  
PDOP: 2.2  
ELEV: 4869'  
1/4, 1/4: SENE

## BOTTOM HOLE

LAT: 40.50282°N  
LONG: 104.42082°W

## LEGEND

- = ALIQUOT MONUMENT AS DESCRIBED  
○ = CALCULATED POSITION

## SHEET 1 OF 2

Kyle E. Rutz-On BEYOND WAY LAND SURVEY, INC.  
Colorado Licensed Professional Land Surveyor No. 38307

DATE: 10/6/2014  
PROJECT#: 2014168

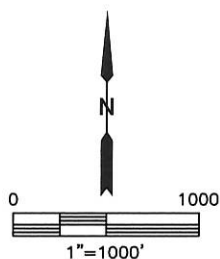
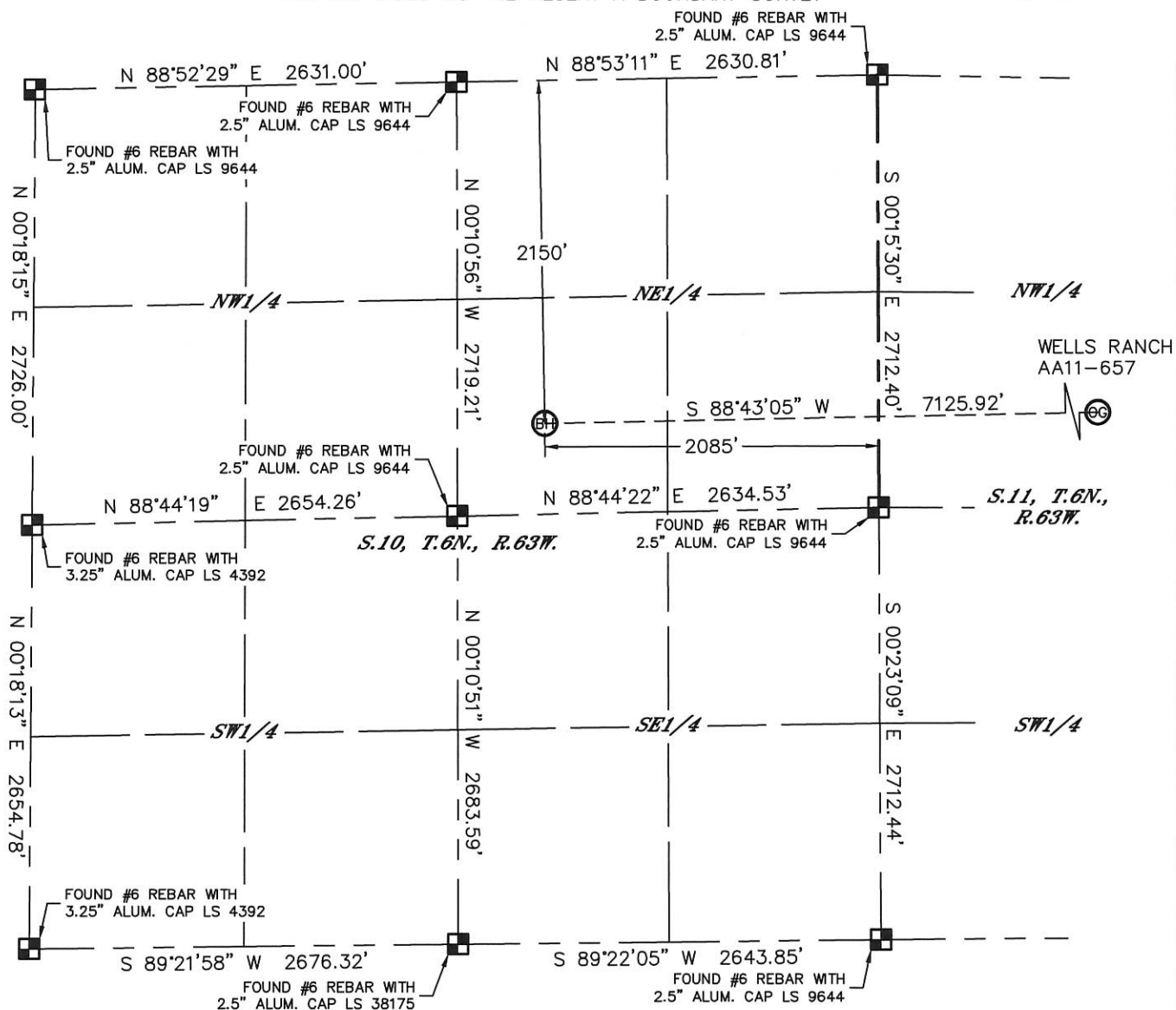


Lat40°, Inc. 6250 W. 10th Street, Unit 2, Greeley, CO 970-515-5294



# WELL LOCATION CERTIFICATE

SECTION: 11  
TOWNSHIP: 6N  
RANGE: 63W

THIS MAP DOES NOT REPRESENT A BOUNDARY SURVEY



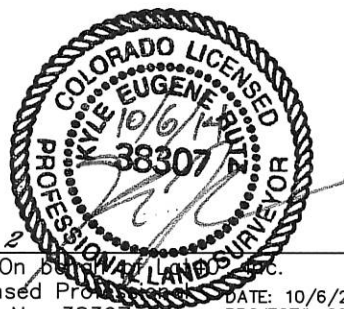
### LEGEND

-  = ALIQUOT MONUMENT AS DESCRIBED  
 = CALCULATED POSITION

*SHEET 2 OF 2*

Kyle E. Rutz—On behalf of LAND SURVEYORS, Inc.  
Colorado Licensed Professional Land Surveyor No. 38307  
DATE: PROJECT:

DATE: 10/6/2014  
PROJECT#: 2014168

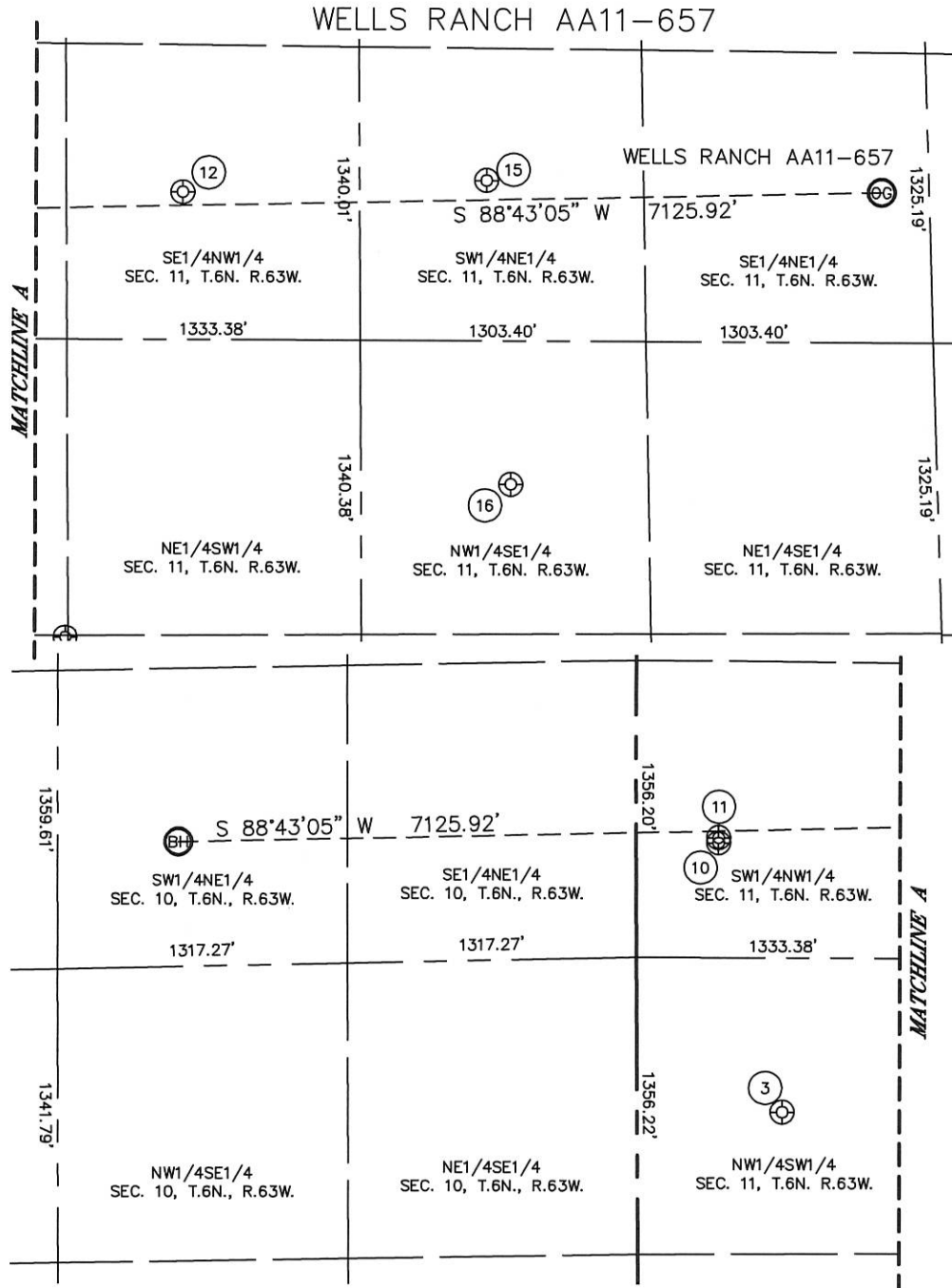




Lat40 , Inc. 6250 W. 10th Street, Unit 2, Greeley, CO 970-515-5294

## SITE SKETCH

SECTION: 11  
TOWNSHIP: 6N  
RANGE: 63W



WELL NO.	WELL NAME	SHL FOOTAGE				SHL LAT°	SHL LONG°	PDOP	ELEV (FT.)	1/4/1/4
3	WELLS RANCH USX AA 11-12	1997	FSL	659	FWL	40.49935	-104.41098	1.9	4784	NWSW
10	WELLS RANCH USX AA 11-65HN	2184	FNL	375	FWL	40.50274	-104.41198	1.9	4781	SWNW
11	WELLS RANCH USX AA 11-67HN	2162	FNL	373	FWL	40.50280	-104.41198	2.1	4781	SWNW
12	WELLS RANCH USX AA 11-06	2014	FNL	1861	FWL	40.50310	-104.40663	1.8	4808	SENW
15	WELLS RANCH USX AA 11-07	1938	FNL	2008	FEL	40.50321	-104.40166	1.8	4830	SWNE
16	WELLS RANCH USX AA 11-10P	2020	FSL	1937	FEL	40.49940	-104.40131	1.8	4834	NWSE

DATE: 10/6/2014  
PROJECT#: 2014168