



# Kerr-McGee Oil & Gas Onshore LP

A subsidiary of Anadarko Petroleum Corporation

1099 18<sup>th</sup> Street  
Denver, CO 80202  
720-929-6000

January 5, 2015

Matt Lepore  
Director, Colorado Oil and Gas Conservation Commission  
Department of Natural Resources  
The Chancery Building  
1120 Lincoln Street, Suite 801  
Denver, CO 80203

Re: **30 Day Certification Letter - 318A.e**  
ICEMAN STATE 12N-16HZ (Doc No. 400762298)  
Township 3 North, Range 67 West  
Section 15: SWNW  
Unit Acreage: 480  
Unit Spacing: 03N-67W-Sec 15 NWSW, SWNW  
03N-67W-Sec 16 N2S2, S2N2  
03N-67W-Sec 17 NESE, SENE  
Weld County, Colorado

Dear Director Lepore:

Kerr McGee Oil and Gas Onshore LP ("KMG") hereby certifies that KMG owns one hundred percent (100%) of the leasehold interest in the mineral rights in the proposed spacing unit. KMG hereby respectfully requests approval of this boundary well.

If you have any questions or issues regarding this permit, please contact Cheryl Light at (720) 929-6461.

Very truly yours,

**Kerr-McGee Oil and Gas Onshore LP**

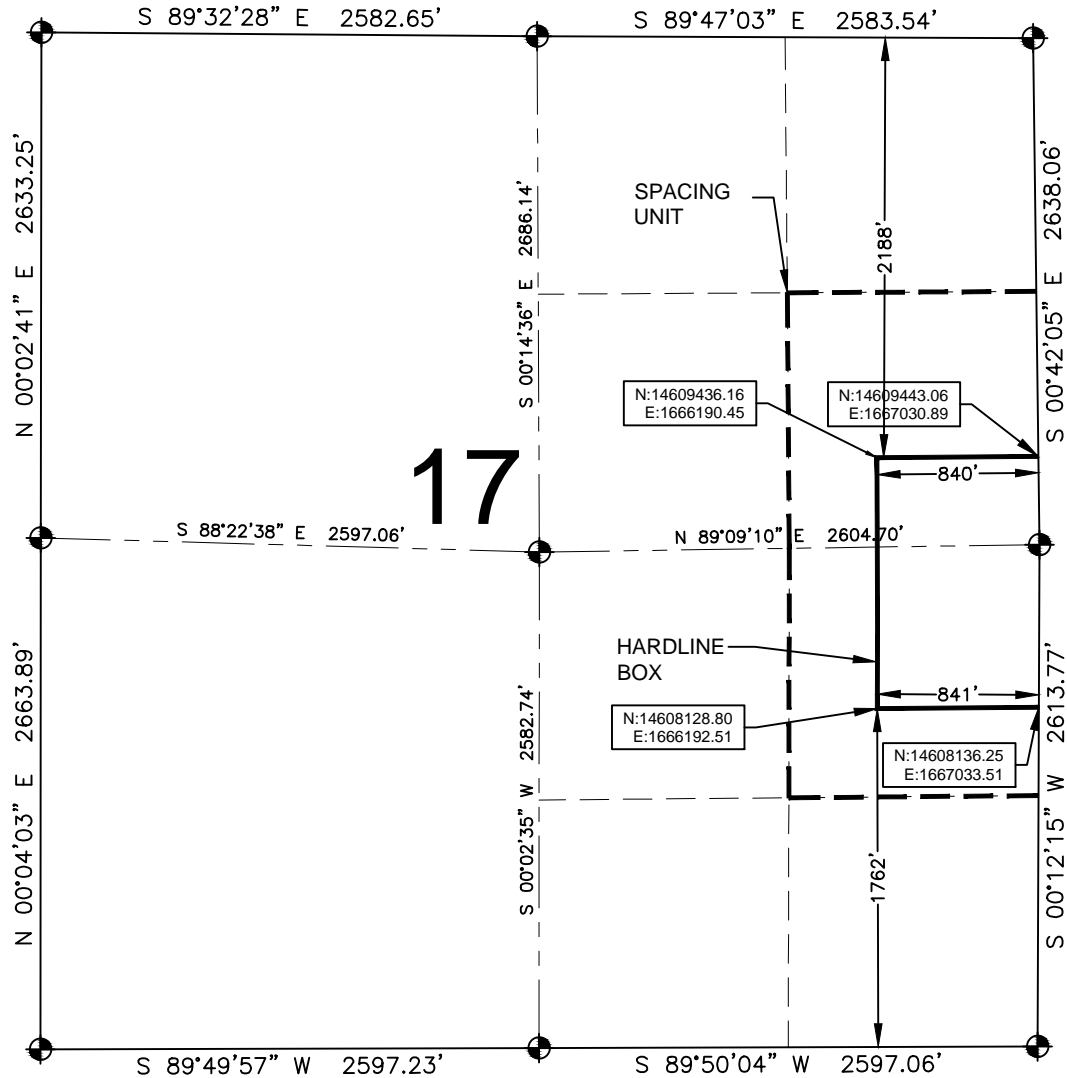
A handwritten signature in black ink, appearing to read 'Mike McConaughy'.

Mike McConaughy  
Sr. Regulatory Analyst

Enclosure

# HARDLINE EXHIBIT: ICEMAN STATE 12N-16HZ

SECTION 17, TOWNSHIP 3 NORTH, RANGE 67 WEST, 6TH P.M.



## LEGEND

- = EXISTING MONUMENT
- = PROPOSED HEEL
- = CALCULATED POSITION
- ⬮ = BOTTOM HOLE
- BH = BOTTOM HOLE

## HEEL LOCATION

NAD83  
LATITUDE= 40.224556°  
LONGITUDE= 104.884161°

LATITUDE= 40°13'28.401"  
LONGITUDE= 104°53'02.981"

## BOTTOM HOLE LOCATION

NAD83  
LATITUDE= 40.224731°  
LONGITUDE= 104.903386°

LATITUDE= 40°13'29.032"  
LONGITUDE= 104°54'12.190"

## QRT/QRT SECTIONS WITHIN PATH OF THE HARDLINE

NESE, SEC. 17  
SENE, SEC. 17

## AVAILABLE FOOTAGE

6830'

## NOTES:

- THIS DOCUMENT IS NOT A LAND SURVEY PLAT OR IMPROVEMENT SURVEY PLAT. THIS DOCUMENT DOES NOT REFLECT A FIELD SURVEY. SECTION BREAKDOWN, MONUMENTATION AND HORIZONTAL POSITIONS SHOWN ARE BASED ON THE HEEL AND BOTTOM HOLE LOCATION PROVIDED BY ANADARKO PETROLEUM CORPORATION

PREPARED BY:

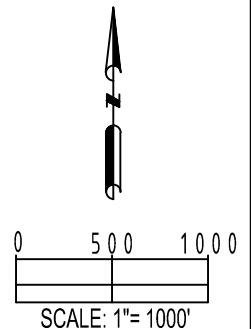


SHEET 1 OF 3

DRAWING DATE:  
12-17-14

BY: TJN  
CHECKED: DRF

HEEL LOCATION:  
NW 1/4 SW 1/4,  
SEC. 15, T3N, R67W, 6TH P.M.  
WELD COUNTY, COLORADO



SECTION 16, TOWNSHIP 3 NORTH, RANGE 67 WEST, 6TH P.M.



 = EXISTING MONUMENT      = BOTTOM HOLE  
 = PROPOSED HEEL     BH = BOTTOM HOLE

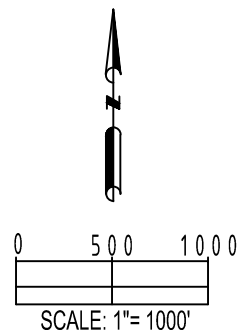
NWSW, SEC. 16      SWNW, SEC. 16  
 NESW, SEC. 16      SENW, SEC. 16  
 NWSE, SEC. 16      SWNE, SEC. 16  
 NESE, SEC. 16      SENE, SEC. 16

1. THIS DOCUMENT IS NOT A LAND SURVEY PLAT OR IMPROVEMENT SURVEY PLAT. THIS DOCUMENT DOES NOT REFLECT A FIELD SURVEY. SECTION BREAKDOWN, MONUMENTATION AND HORIZONTAL POSITIONS SHOWN ARE BASED ON THE HEEL AND BOTTOM HOLE LOCATION PROVIDED BY ANADARKO PETROLEUM CORPORATION

PREPARED BY:

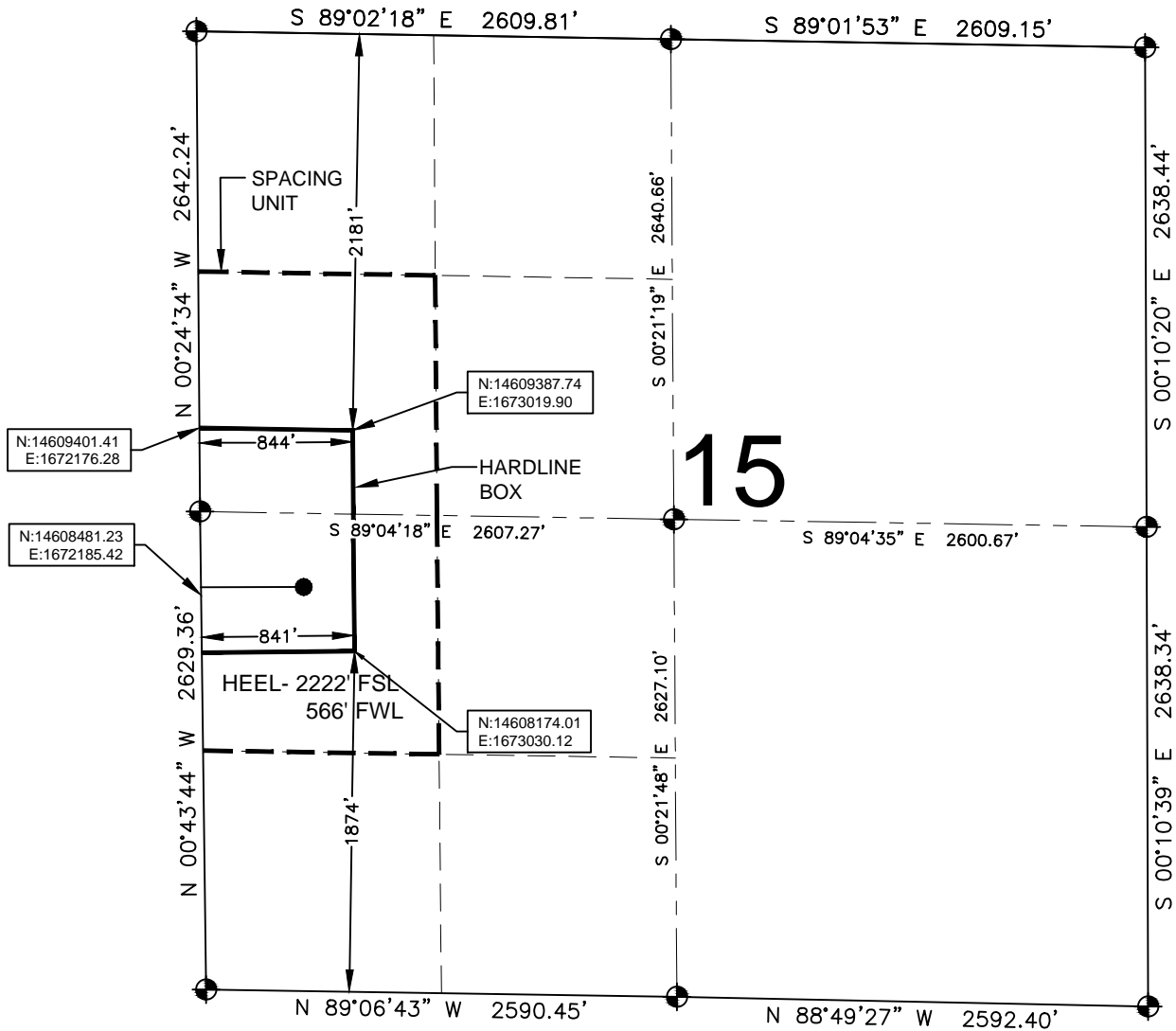
**PFS**  Petroleum Field Services, LLC  
7535 Hilltop Circle  
Denver, CO 80221

DRAWING DATE: 12-17-14		HEEL LOCATION: NW 1/4 SW 1/4, SEC. 15, T3N, R67W, 6TH P.M. WELD COUNTY, COLORADO	
BY: TJN	CHECKED: DRF		



# HARDLINE EXHIBIT: ICEMAN STATE 12N-16HZ

SECTION 15, TOWNSHIP 3 NORTH, RANGE 67 WEST, 6TH P.M.



## LEGEND

- = EXISTING MONUMENT    ● = BOTTOM HOLE  
● = PROPOSED HEEL    BH = BOTTOM HOLE

## QRT/QRT SECTIONS WITHIN PATH OF THE HARDLINE

NWSW, SEC. 15  
SWNW, SEC. 15

## NOTES:

- THIS DOCUMENT IS NOT A LAND SURVEY PLAT OR IMPROVEMENT SURVEY PLAT. THIS DOCUMENT DOES NOT REFLECT A FIELD SURVEY. SECTION BREAKDOWN, MONUMENTATION AND HORIZONTAL POSITIONS SHOWN ARE BASED ON THE HEEL AND BOTTOM HOLE LOCATION PROVIDED BY ANADARKO PETROLEUM CORPORATION