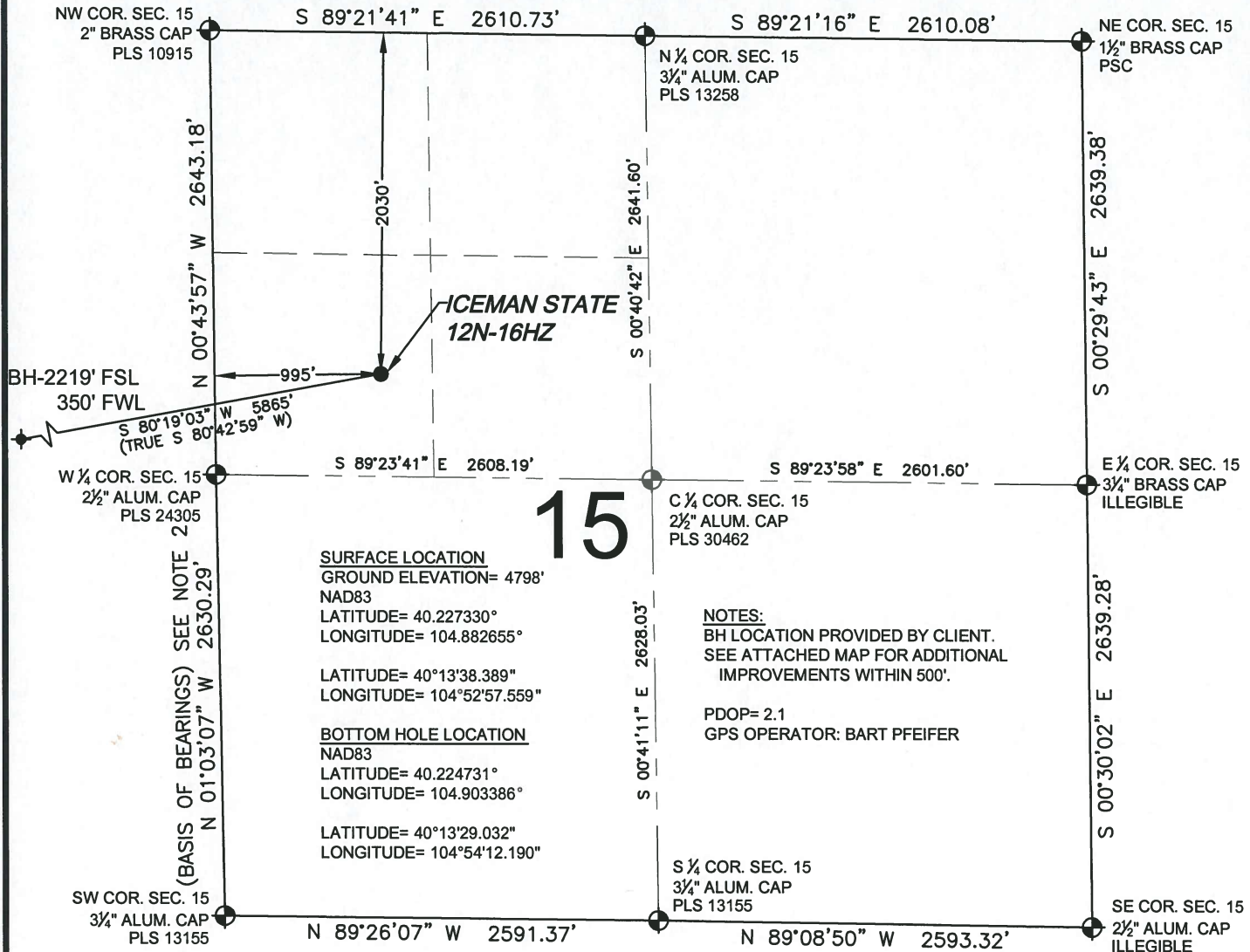


# WELL LOCATION CERTIFICATE: ICEMAN STATE 12N-16HZ

SECTION 15, TOWNSHIP 3 NORTH, RANGE 67 WEST, 6TH P.M.



15

**SURFACE LOCATION**  
GROUND ELEVATION= 4798'  
NAD83  
LATITUDE= 40.227330°  
LONGITUDE= 104.882655°

LATITUDE= 40°13'38.389"  
LONGITUDE= 104°52'57.559"

**BOTTOM HOLE LOCATION**  
NAD83  
LATITUDE= 40.224731°  
LONGITUDE= 104.903386°

LATITUDE= 40°13'29.032"  
LONGITUDE= 104°54'12.190"

**NOTES:**  
BH LOCATION PROVIDED BY CLIENT.  
SEE ATTACHED MAP FOR ADDITIONAL  
IMPROVEMENTS WITHIN 500'.

PDOP= 2.1  
GPS OPERATOR: BART PFEIFER

WELL ICEMAN STATE 12N-16HZ TO BE LOCATED 2030' FNL AND 995' FWL

## LEGEND

- = EXISTING MONUMENT
- ◆ = BOTTOM HOLE
- = PROPOSED WELL
- ◆ = EXISTING WELL
- BH = BOTTOM HOLE
- = CALCULATED POSITION

## NOTES:

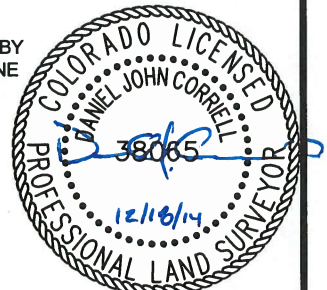
- THIS FIELD SURVEY CONFORMS TO THE MINIMUM STANDARDS SET BY THE C.O.G.C.C., RULE NO. 215
- BEARINGS AND DISTANCE SHOWN HEREON ARE GRID AND BASED ON THE COLORADO STATE PLANE COORDINATE SYSTEM, NAD 83/2011 BETWEEN MONUMENTS AS LABELED HEREON AND ELEVATIONS SHOWN ARE NAVD 88, AS DERIVED BY GPS OBSERVATIONS.
- GRID DISTANCES ARE SHOWN, AS MEASURED IN THE FIELD, WITH TIES TO WELLS MEASURED PERPENDICULAR TO SECTION LINES.
- ALL LINES SHOWN THAT ARE WITHOUT DIMENSION SHOULD BE CONSIDERED SCALED AND ONLY REPRESENT A GRAPHICAL DEPICTION OF THE APPROXIMATE LOCATION OF SAID LINE.

I, DANIEL JOHN CORRIELL, A LICENSED PROFESSIONAL LAND SURVEYOR IN THE STATE OF COLORADO DO HEREBY CERTIFY TO **KERR-MCGEE OIL & GAS ONSHORE LP**, THAT THE SURVEY AND WELL LOCATION CERTIFICATE SHOWN HEREON WERE DONE BY ME OR UNDER MY DIRECT SUPERVISION AND THAT THE DRAWING SHOWN HEREON ACCURATELY DEPICTS THE PROPOSED LOCATION OF THE WELL. THIS CERTIFICATE DOES NOT REPRESENT A LAND SURVEY PLAT OR IMPROVEMENT SURVEY PLAT AS DEFINED BY C.R.S. 38-51-102 AND CANNOT BE RELIED UPON TO DETERMINE OWNERSHIP.

DANIEL JOHN CORRIELL, PLS 38065  
COLORADO LICENSED PROFESSIONAL LAND SURVEYOR  
FOR AND ON BEHALF OF P.F.S., LLC

0 500 1000

SCALE: 1"= 1000'



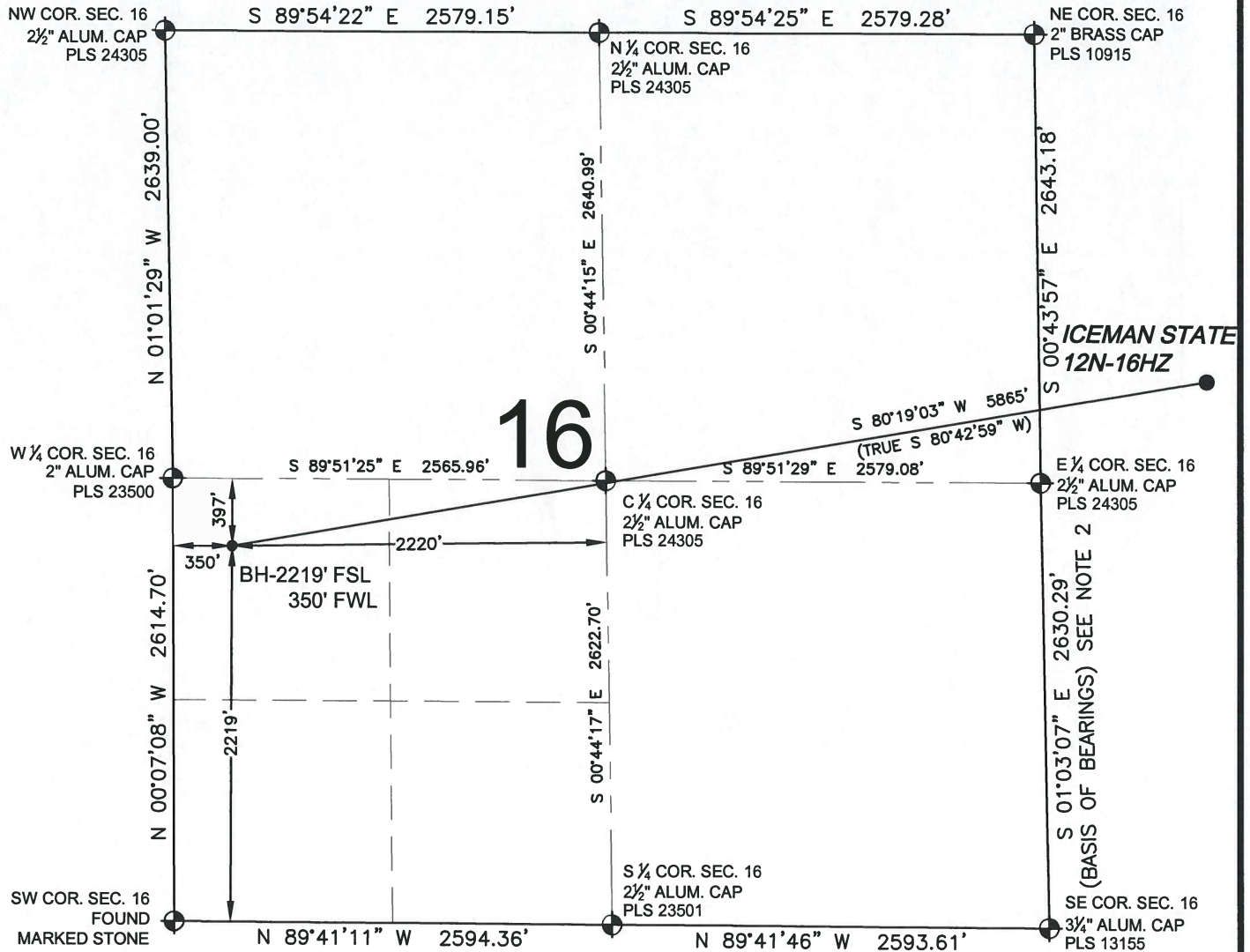
SHEET 1 OF 2

PREPARED BY:	FIELD DATE:	SURFACE LOCATION:
PFS	09-04-14	SW 1/4 NW 1/4,
Oil & Gas Services, LLC	DRAWING DATE:	SEC. 15, T3N, R67W, 6TH P.M.
7535 Hilltop Circle	12-17-14	
Denver, CO 80221	BY:	CHECKED:
	TJN	DRF
		WELD COUNTY, COLORADO

NOTICE: ACCORDING TO COLORADO LAW YOU MUST COMMENCE ANY LEGAL ACTION BASED UPON ANY DEFECT IN THIS SURVEY WITHIN THREE YEARS AFTER YOU FIRST DISCOVER SUCH DEFECT. IN NO EVENT MAY ANY ACTION BASED UPON ANY DEFECT IN THIS SURVEY BE COMMENCED MORE THAN TEN YEARS FROM THIS SAID DATE OF THIS CERTIFICATION SHOWN HEREON.

# WELL LOCATION CERTIFICATE: ICEMAN STATE 12N-16HZ

SECTION 16, TOWNSHIP 3 NORTH, RANGE 67 WEST, 6TH P.M.

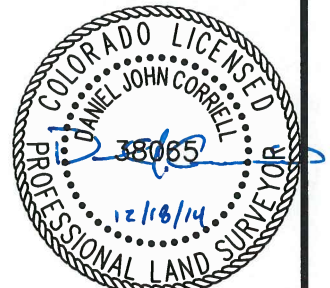
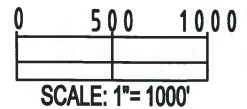


## NOTES:


1. THIS FIELD SURVEY CONFORMS TO THE MINIMUM STANDARDS SET BY THE C.O.G.C.C., RULE NO. 215
2. BEARINGS AND DISTANCE SHOWN HEREON ARE GRID AND BASED ON THE COLORADO STATE PLANE COORDINATE SYSTEM, NAD 83/2011 BETWEEN MONUMENTS AS LABELED HEREON AND ELEVATIONS SHOWN ARE NAVD 88, AS DERIVED BY GPS OBSERVATIONS.
3. GRID DISTANCES ARE SHOWN, AS MEASURED IN THE FIELD, WITH TIES TO WELLS MEASURED PERPENDICULAR TO SECTION LINES.
4. ALL LINES SHOWN THAT ARE WITHOUT DIMENSION SHOULD BE CONSIDERED SCALED AND ONLY REPRESENT A GRAPHICAL DEPICTION OF THE APPROXIMATE LOCATION OF SAID LINE.

## LEGEND

- ⊕ = EXISTING MONUMENT
- = PROPOSED WELL
- BH = BOTTOM HOLE
- ⬮ = BOTTOM HOLE
- ◆ = EXISTING WELL
- = CALCULATED POSITION



SHEET 2 OF 2

PREPARED BY:	FIELD DATE:	SURFACE LOCATION:
	09-04-14	SW 1/4 NW 1/4,
	DRAWING DATE:	SEC. 15, T3N, R67W, 6TH P.M.
	12-17-14	
BY:	CHECKED:	WELD COUNTY, COLORADO
TJN	DRF	

DANIEL JOHN CORRIELL, PLS 38065  
COLORADO LICENSED PROFESSIONAL LAND SURVEYOR  
FOR AND ON BEHALF OF P.F.S., LLC

NOTICE: ACCORDING TO COLORADO LAW YOU MUST COMMENCE ANY LEGAL ACTION BASED UPON ANY DEFECT IN THIS SURVEY WITHIN THREE YEARS AFTER YOU FIRST DISCOVER SUCH DEFECT. IN NO EVENT MAY ANY ACTION BASED UPON ANY DEFECT IN THIS SURVEY BE COMMENCED MORE THAN TEN YEARS FROM THIS SAID DATE OF THIS CERTIFICATION SHOWN HEREON.