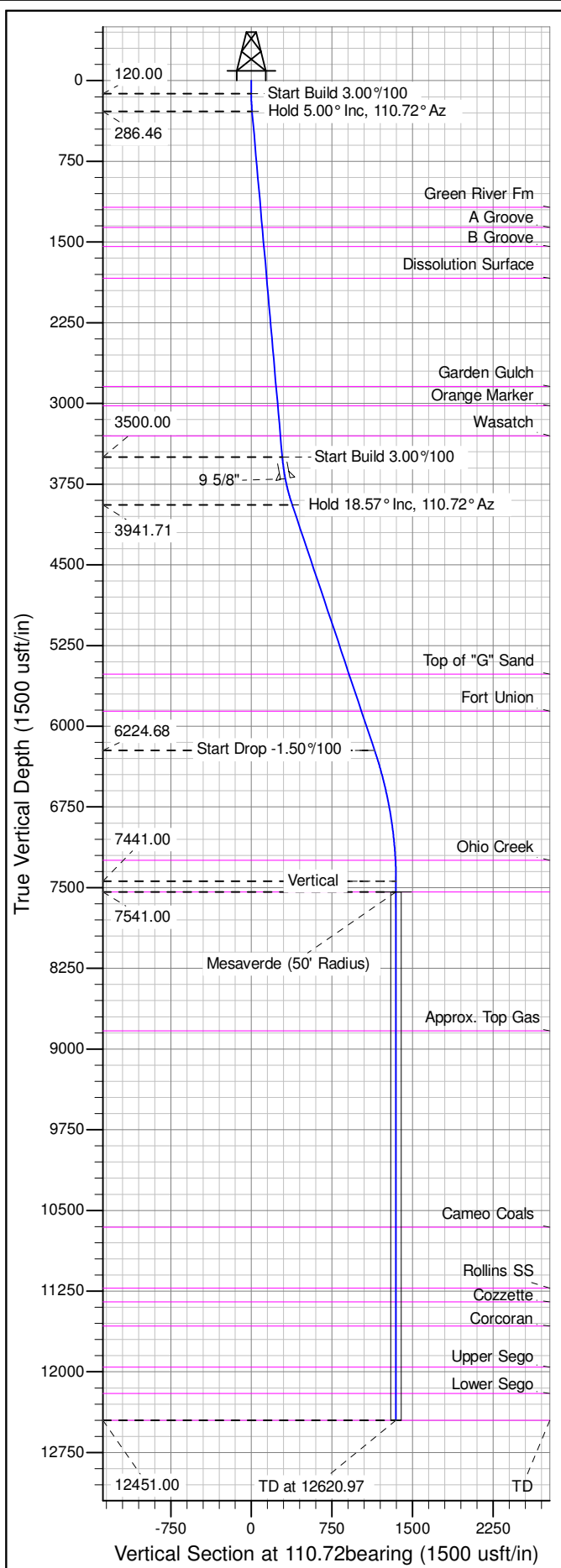




Well Name: RGU 24-36-198  
Surface Location: RGU 13-36-198 Pad  
North American Datum 1983 , US State Plane 1983 , Colorado Central Zone  
Ground Elevation: 6680.00  
+N/-S +E/-W Northing Easting Latitude Longitude Slot  
0.00 0.00 1771341.20 2201057.20 39.916757 -108.348612 B04  
KELLY BUSHING @ 6706.00usft (Cyclone 29 (26' RKB) mab)



ANNOTATIONS									
TVD	MD	Inc	Azi	+N/-S	+E/-W	V Sect	Departure	Annotation	
120.00	120.00	0.00	0.00	0.00	0.00	0.00	0.00	Start Build 3.00°/100	
286.46	286.67	5.00	110.72	-2.57	6.80	7.27	7.27	Hold 5.00° Inc, 110.72° Az	
3500.00	3512.49	5.00	110.72	-102.04	269.76	288.42	288.42	Start Build 3.00°/100	
3941.71	3964.76	18.57	110.72	-134.65	355.95	380.57	380.57	Hold 18.57° Inc, 110.72° Az	
6224.68	6373.10	18.57	110.72	-405.99	1073.23	1147.46	1147.46	Start Drop -1.50°/100	
7441.00	7610.97	0.00	0.00	-476.34	1259.21	1346.29	1346.29	Vertical	
7541.00	7710.97	0.00	0.00	-476.34	1259.21	1346.29	1346.29	Mesaverde	
12451.00	12620.97	0.00	0.00	-476.34	1259.21	1346.29	1346.29	TD at 12620.97	

