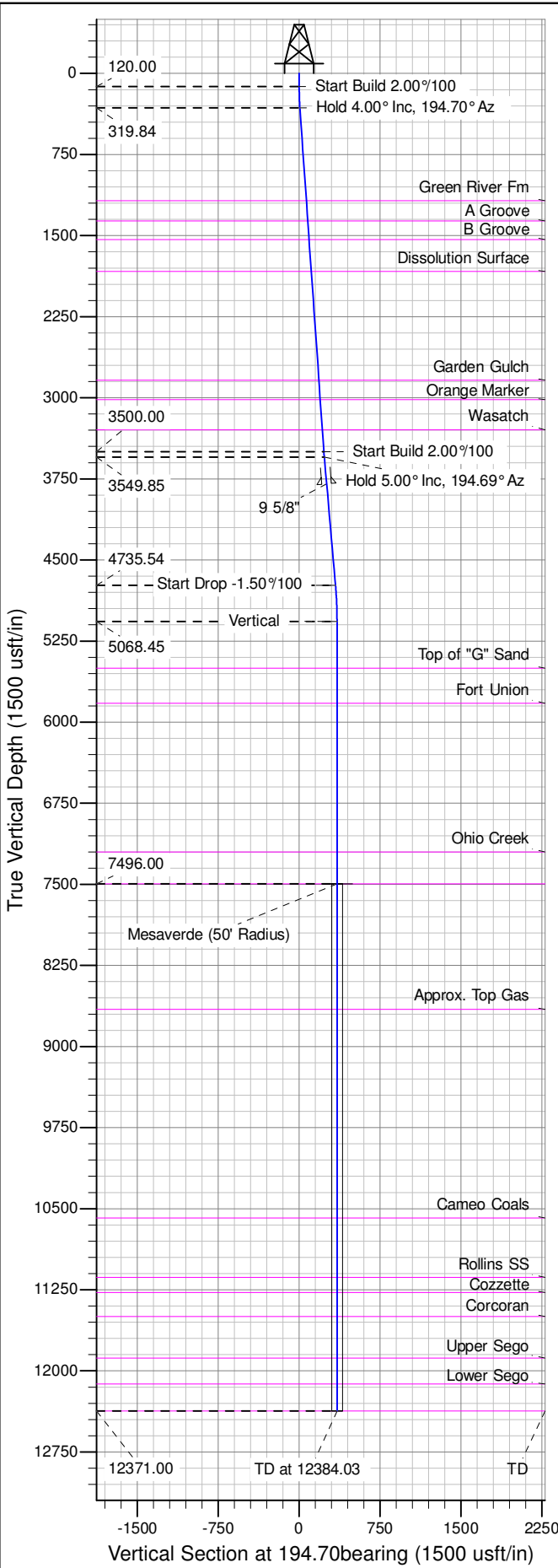
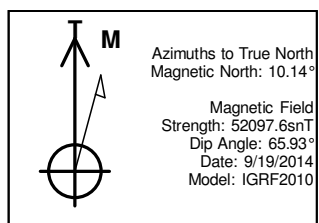
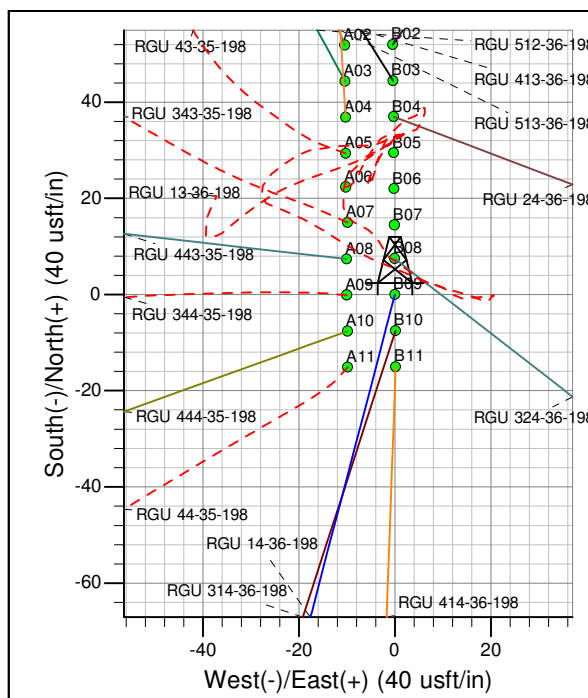
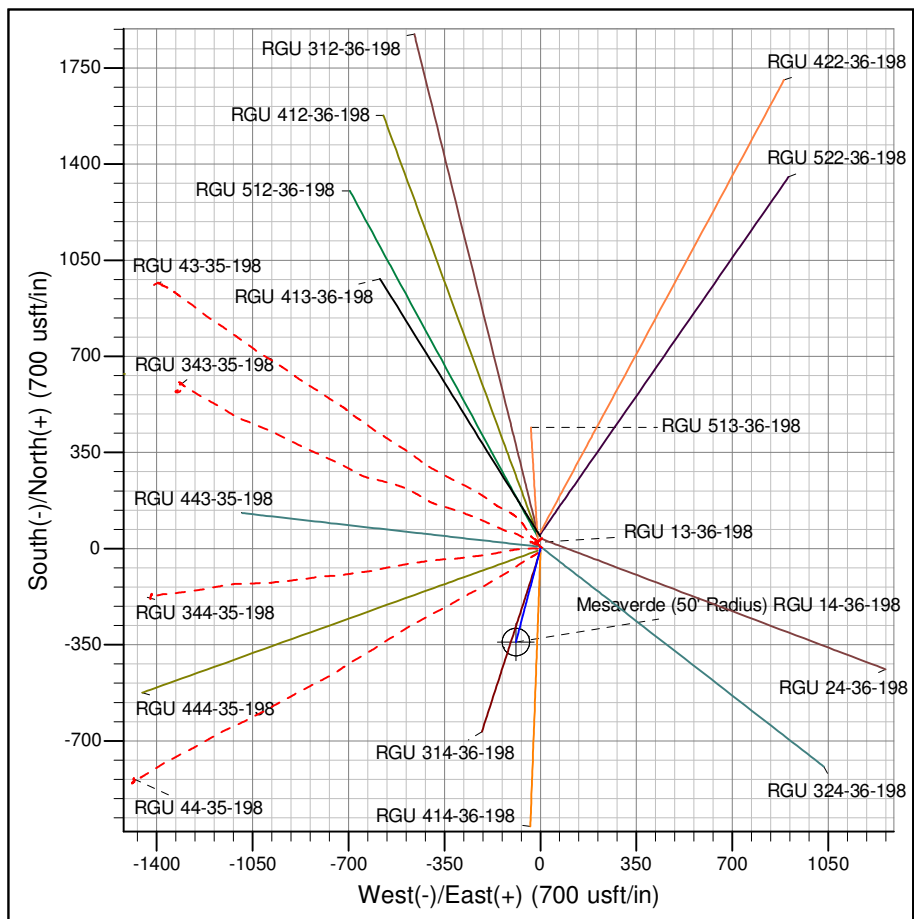




Well Name: RGU 14-36-198  
Surface Location: RGU 13-36-198 Pad  
North American Datum 1983 , US State Plane 1983 , Colorado Central Zone  
Ground Elevation: 6680.00  
+N/-S +E/-W Northing Easting Latitude Longitude Slot  
0.00 0.00 1771304.20 2201056.30 39.916656 -108.348611 B09  
KELLY BUSHING @ 6706.00usft (Cyclone 29 (26' RKB) mab)



ANNOTATIONS									
TVD	MD	Inc	Azi	+N/-S	+E/-W	Vsect	Departure	Annotation	
120.00	120.00	0.00	0.00	0.00	0.00	0.00	0.00	Start Build 2.00°/100	
319.84	320.00	4.00	194.70	-6.75	-1.77	6.98	6.98	Hold 4.00° Inc, 194.70° Az	
3500.00	3507.93	4.00	194.70	-221.85	-58.20	229.36	229.36	Start Build 2.00°/100	
3549.85	3557.93	5.00	194.69	-225.64	-59.20	233.28	233.28	Hold 5.00° Inc, 194.69° Az	
4735.54	4748.15	5.00	194.69	-325.99	-85.49	337.01	337.01	Start Drop -1.50°/100	
5068.45	5081.48	0.00	0.00	-340.05	-89.18	351.55	351.55	Vertical	
7496.00	7509.03	0.00	0.00	-340.05	-89.18	351.55	351.55	Mesaverde	
12371.00	12384.03	0.00	0.00	-340.05	-89.18	351.55	351.55	TD at 12384.03	



Magnetic Field  
Strength: 52097.6snT  
Dip Angle: 65.93°  
Date: 9/19/2014  
Model: IGRF2010

Project: RG 36-01S-098W  
Site: RGU 13-36-198 Pad  
Well: RGU 14-36-198  
Design #1 19Sep14 mab