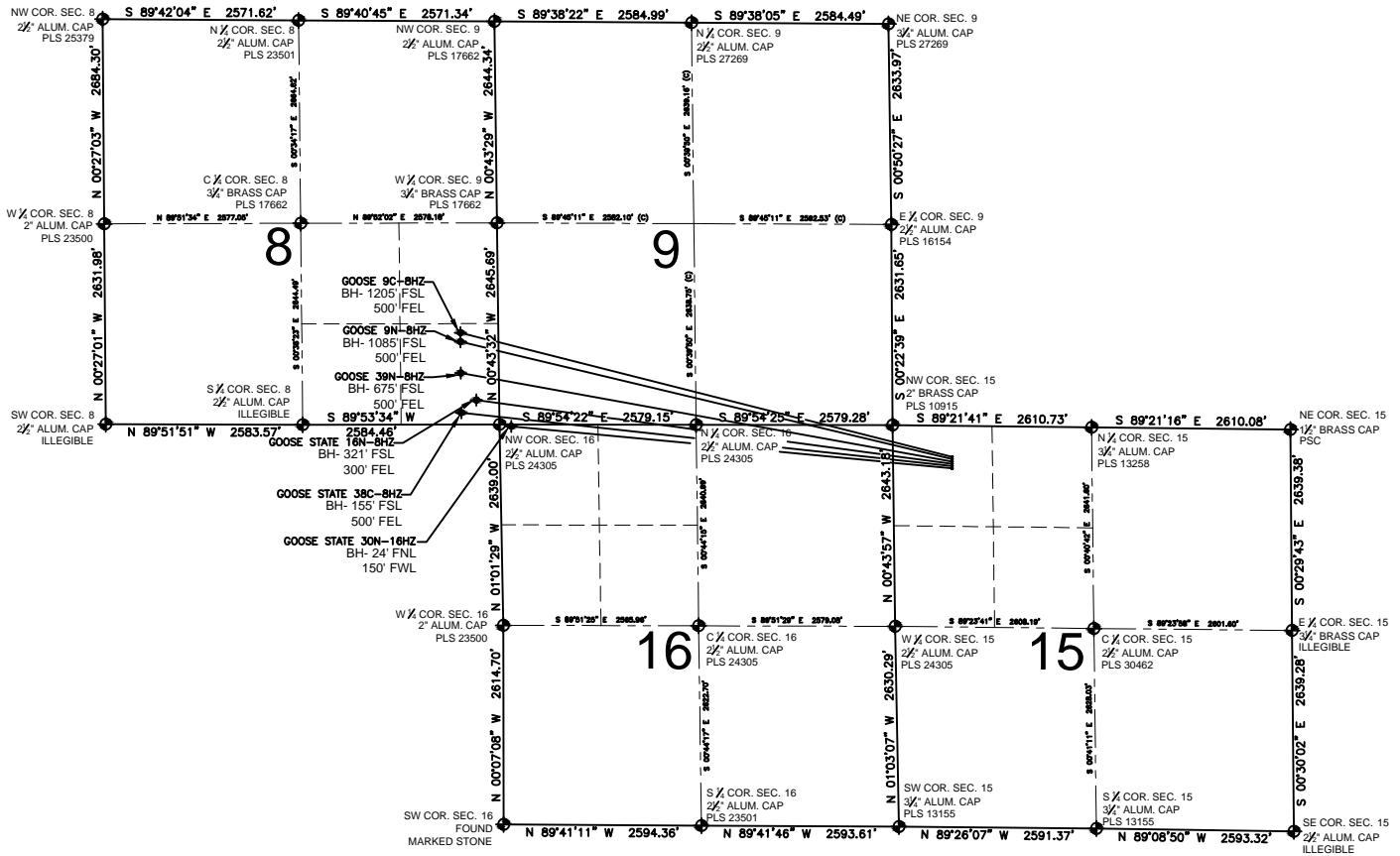


# GOOSE 39N-8HZ MULTI-WELL PLAN

SECTION 15, TOWNSHIP 3 NORTH, RANGE 67 WEST, 6TH P.M.



## NOTES:

GOOSE 9C-8HZ TO BE AT 410' FNL, 775' FWL.  
 BOTTOM HOLE AT 1205' FSL & 500' FEL, SEC. 8  
 GOOSE 9N-8HZ TO BE AT 440' FNL, 775' FWL.  
 BOTTOM HOLE AT 1085' FSL & 500' FEL, SEC. 8  
 GOOSE 39N-8HZ TO BE AT 470' FNL, 775' FWL.  
 BOTTOM HOLE AT 675' FSL & 500' FEL, SEC. 8  
 GOOSE STATE 16N-8HZ TO BE AT 500' FNL, 775' FWL.  
 BOTTOM HOLE AT 321' FSL & 300' FEL, SEC. 8  
 GOOSE STATE 38C-8HZ TO BE AT 530' FNL, 775' FWL.  
 BOTTOM HOLE AT 155' FSL & 500' FEL, SEC. 8  
 GOOSE STATE 30N-16HZ TO BE AT 560' FNL, 775' FWL.  
 BOTTOM HOLE AT 24' FNL & 150' FWL, SEC. 16

## LEGEND

- = EXISTING MONUMENT
- = PROPOSED WELL
- ◆ = BOTTOM HOLE
- ◆ = EXISTING WELL
- BH = BOTTOM HOLE

PREPARED BY:



KERR-MCGEE OIL & GAS ONSHORE LP

FIELD DATE:

09-04-14

DRAWING DATE:

12-12-14

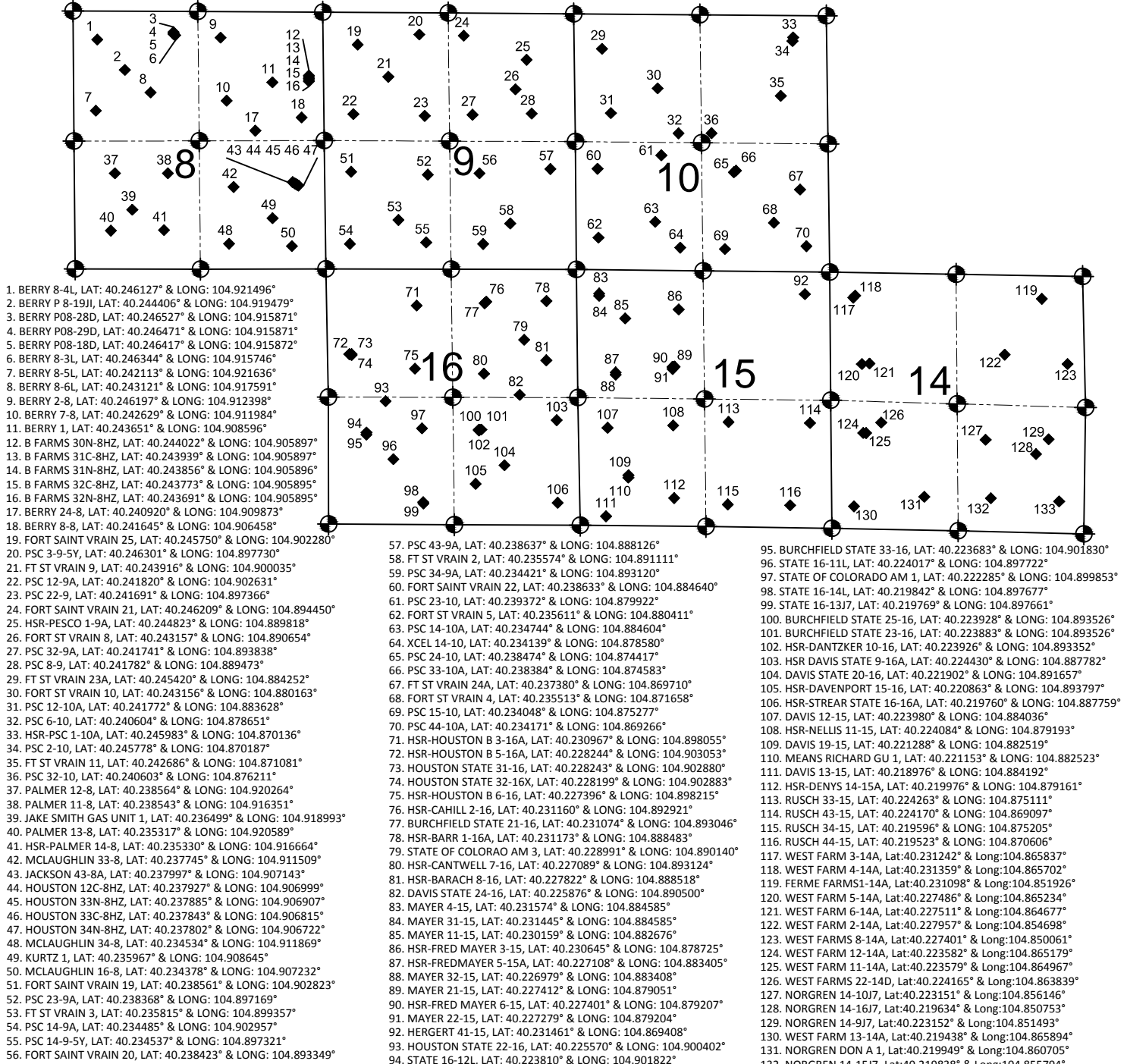
SURFACE LOCATION:

NW 1/4, NW 1/4, SEC. 15, T3N, R67W, 6TH P.M.  
 WELD COUNTY, COLORADO



# GOOSE 39N-8HZ PRODUCING WELLS EXHIBIT

SECTION 8, 9, 10, 15, 16, 17, TOWNSHIP 3 NORTH, RANGE 67 WEST, 6TH P.M.



## LEGEND

- = EXISTING MONUMENT    ♦ = BOTTOM HOLE    BH= BOTTOM HOLE  
• = PROPOSED WELL    ◆ = EXISTING WELL    ○ = CALCULATED POSITION

PREPARED BY:



KERR-MCGEE OIL & GAS ONSHORE LP

FIELD DATE:

09-08-14

DRAWING DATE:

12-20-14

SURFACE LOCATION:

NW¼, SEC. 15, T3N, R67W, 6TH P.M.

WELD COUNTY, COLORADO

