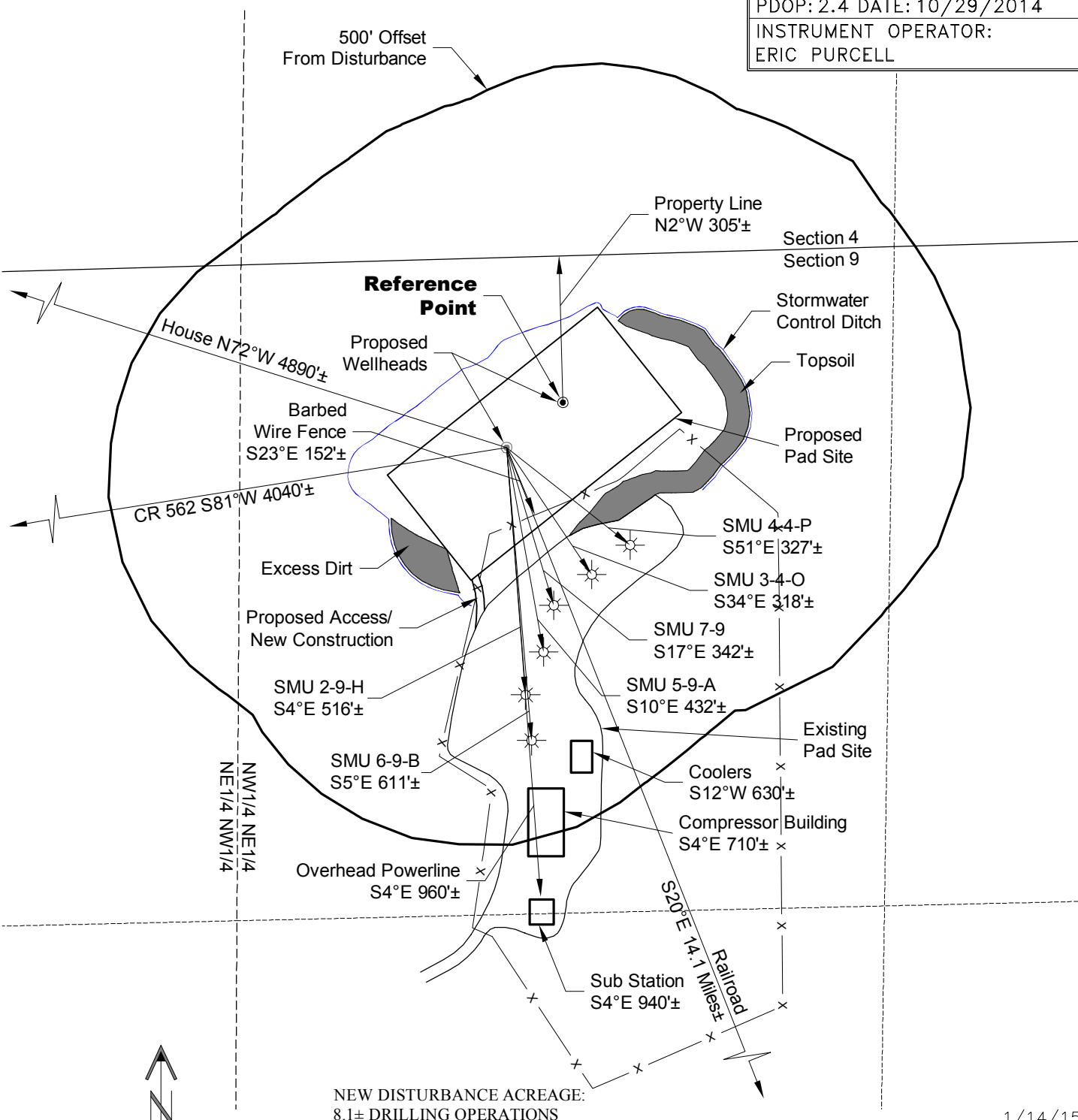


PLANT COMMUNITY:
MOUNTAIN SHRUBS
SAGEBRUSH
PINE

LOCATION DRAWING

REFERENCE POINT

LATITUDE: 37.72181
LONGITUDE: -105.22284
FOOTAGE: 305 FNL 2039 FEL
GROUND ELEVATION: 8124.5
PDOP: 2.4 DATE: 10/29/2014
INSTRUMENT OPERATOR:
ERIC PURCELL



A division of Topographic Land Surveyors
www.topographic.com

**OXY PERMIAN
SMU 6-4-I PAD**

**NW1/4 NE1/4 SECTION 9 T27S R70W
6th PM HUERFANO COUNTY COLORADO**

1/14/15