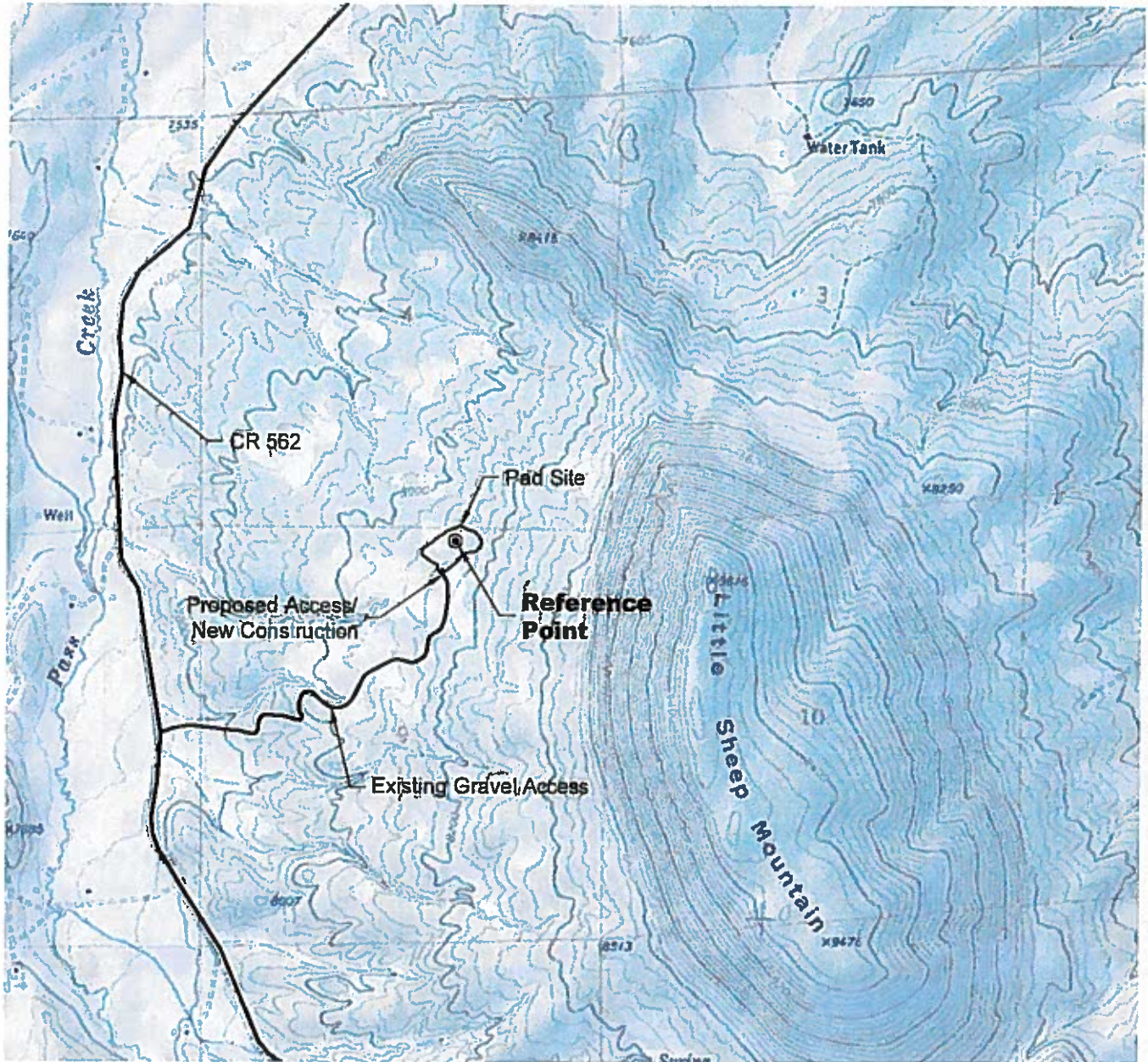


ACCESS ROAD MAP



DRIVING DIRECTIONS:

- MP 0.0 - Intersection of Highway 69 & CR 550; West on CR 550
- MP 0.1 - First Left on CR 560
- MP 6.3 - Continue to CR 562
- MP 6.8 - Left Existing Gravel Access
- MP 7.9 - SMU 6-4-I Pad

12/5/14



North



Graphic Scale in Feet
1" = 2000'



LAND SURVEYING AND MAPPING
LAFAYETTE - WINTER PARK
Ph 303 666 0379 Fx 303 665 6320

OXY PERMIAN
SMU 6-4-I PAD

NW1/4 NE1/4 SECTION 9 T27S R70W
6th PM HUERFANO COUNTY COLORADO