

# Occidental Oil and Gas Co.

## Design Proposal

SMU 2015 w plat coordinates

Well Name: 6-4-I

North American Datum 1983

US State Plane 1983

Colorado Southern Zone

Surface Coordinates:

105° 13' 22.224 W

37° 43' 18.516 N

3080170.02

1384319.29

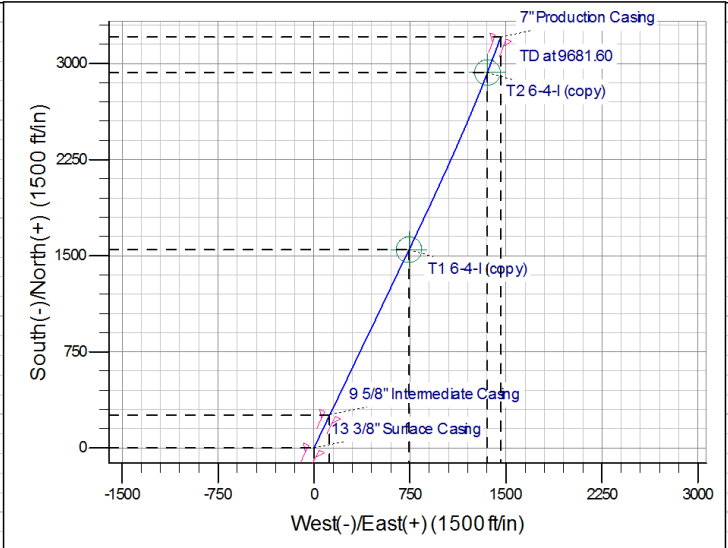
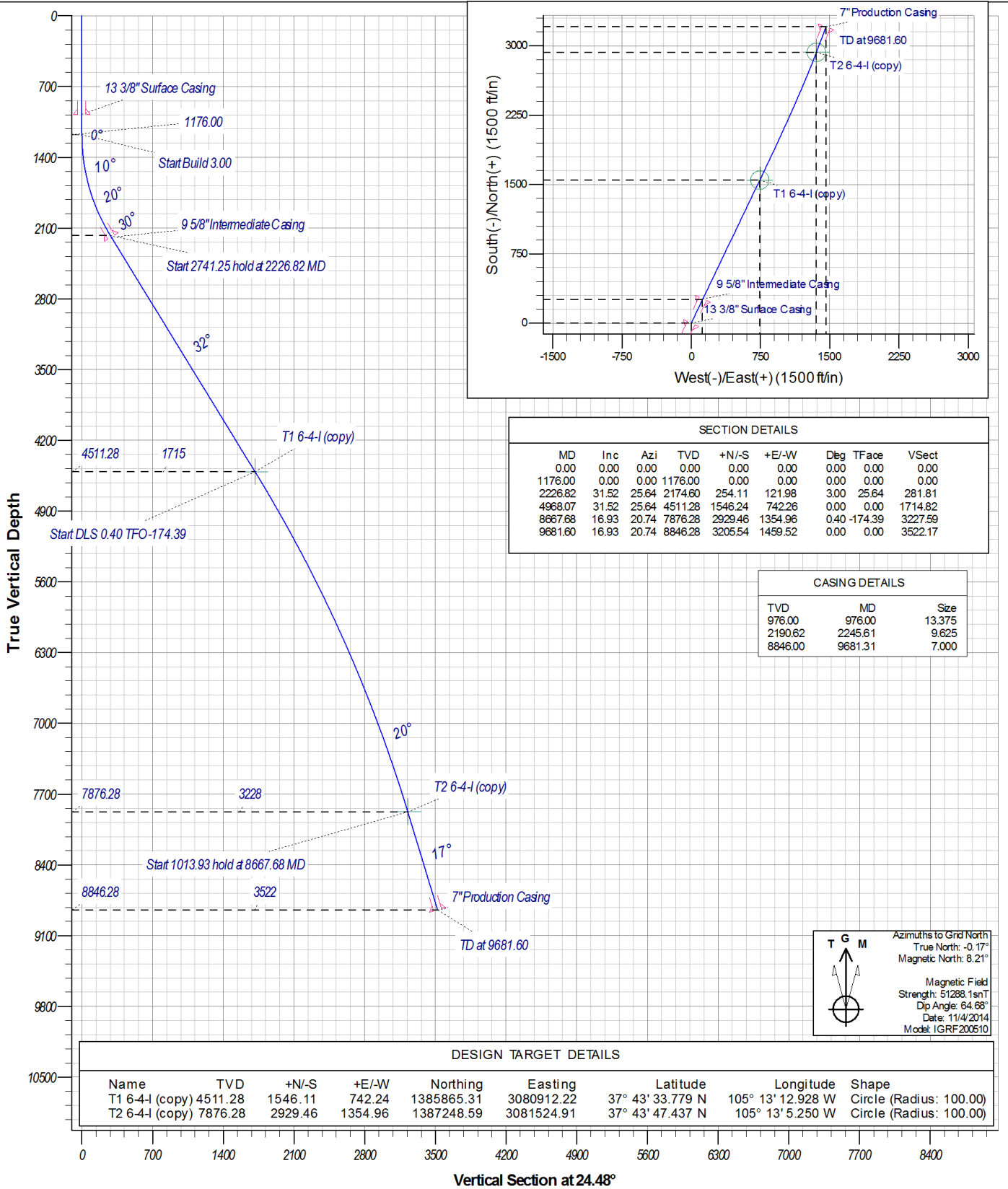
Ground elevation (relative to MSL)

8150.28

DSF @ 8176.28ft



Design date: 8:48, November 25 2014



SECTION DETAILS									
MD	Inc	Azi	TVD	+N/-S	+E/-W	Deg	TFace	VSec	
0.00	0.00	0.00	0.00	0.00	0.00	0.00	0.00	0.00	
1176.00	0.00	0.00	1176.00	0.00	0.00	0.00	0.00	0.00	
2226.82	31.52	25.64	2174.60	254.11	121.98	3.00	25.64	281.81	
4968.07	31.52	25.64	4511.28	1546.24	742.26	0.00	0.00	1714.82	
8667.68	16.93	20.74	7876.28	2929.46	1354.96	0.40	-174.39	3227.59	
9681.60	16.93	20.74	8846.28	3205.54	1459.52	0.00	0.00	3522.17	

CASING DETAILS		
TVD	MD	Size
976.00	976.00	13.375
2190.62	2245.61	9.625
8846.00	9681.31	7.000

T G M

Azimuths to Grid North

True North: -0.17°

Magnetic North: 8.21°

Magnetic Field

Strength: 51288.1nT

Dip Angle: 64.68°

Date: 11/4/2014

Model: IGRF200510

DESIGN TARGET DETAILS									
Name	TVD	+N/-S	+E/-W	Northing	Easting	Latitude	Longitude	Shape	
T1 6-4-I (copy)	4511.28	1546.11	742.24	1385865.31	3080912.22	37° 43' 33.779 N	105° 13' 12.928 W	Circle (Radius: 100.00)	
T2 6-4-I (copy)	7876.28	2929.46	1354.96	1387248.59	3081524.91	37° 43' 47.437 N	105° 13' 5.250 W	Circle (Radius: 100.00)	

Vertical Section at 24.48°