



**Bill Barrett Corporation**

## **Bill Barrett Corp.**

**Weld Co., CO**

**Sec.35-T5N-R62W**

**Anschutz State 5-62-35-1609BH2**

**Wellbore #1**

**Plan: Design #2**

## **Standard Planning Report**

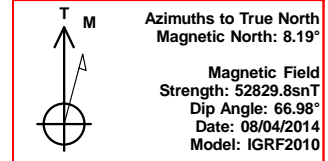
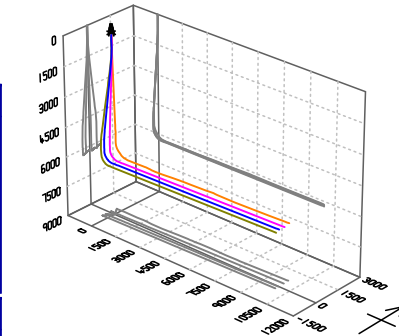
**15 January, 2015**

# **Archer**



Bill Barrett Corp.  
Project: Weld Co., CO  
Site: Sec.35-T5N-R62W  
Well: Anschutz State 5-62-35-1609BH2  
Wellbore: Wellbore #1  
Design: Design #2  
Lat: 40° 21' 39.661 N  
Long: 104° 17' 55.730 W  
Pad GL: 4640.00  
KB: WELL @ 4663.00usft (Original Well Elev)

# Archer



## SECTION DETAILS

MD	Inc	Azi	TVD	+N/-S	+E/-W	Dleg	TFace	Vsect	Annotation
0.00	0.00	0.00	0.00	0.00	0.00	0.00	0.00	0.00	
900.00	0.00	0.00	900.00	0.00	0.00	0.00	0.00	0.00	Start Build 2.00
1190.66	5.81	233.04	1190.16	-8.86	-11.77	2.00	233.04	-11.97	Start 3799.76 hold at 1190.66 MD
4990.42	5.81	233.04	4970.38	-240.24	-319.31	0.00	0.00	-324.76	Start Drop -2.00
5281.08	0.00	0.00	5260.54	-249.10	-331.08	2.00	180.00	-336.73	Start 500.00 hold at 5281.08 MD
5781.08	0.00	0.00	5760.54	-249.10	-331.08	0.00	0.00	-336.73	Start Build 12.00
6533.87	90.34	88.68	6238.00	-238.03	149.05	12.00	88.68	143.53	Start 9747.35 hold at 6533.87 MD
16281.22	90.34	88.68	6181.00	-13.31	9893.64	0.00	0.00	9890.71	TD at 16281.22

## WELL DETAILS: Anschutz State 5-62-35-1609BH2

+N/-S	+E/-W	Northing	Ground Level: Easting	4640.00 Latitude	Longitude	Slot
0.00	0.00	1376626.177	3334724.875	40° 21' 39.661 N	104° 17' 55.730 W	

## PROJECT DETAILS: Weld Co., CO

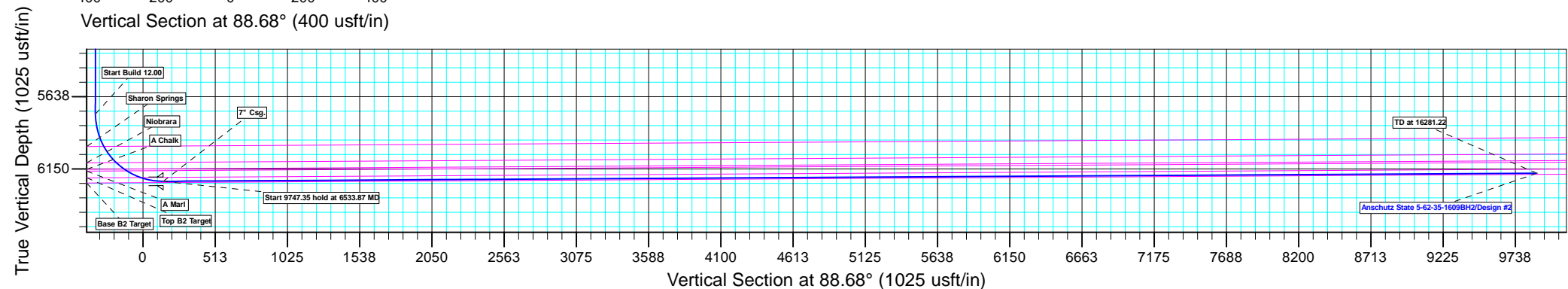
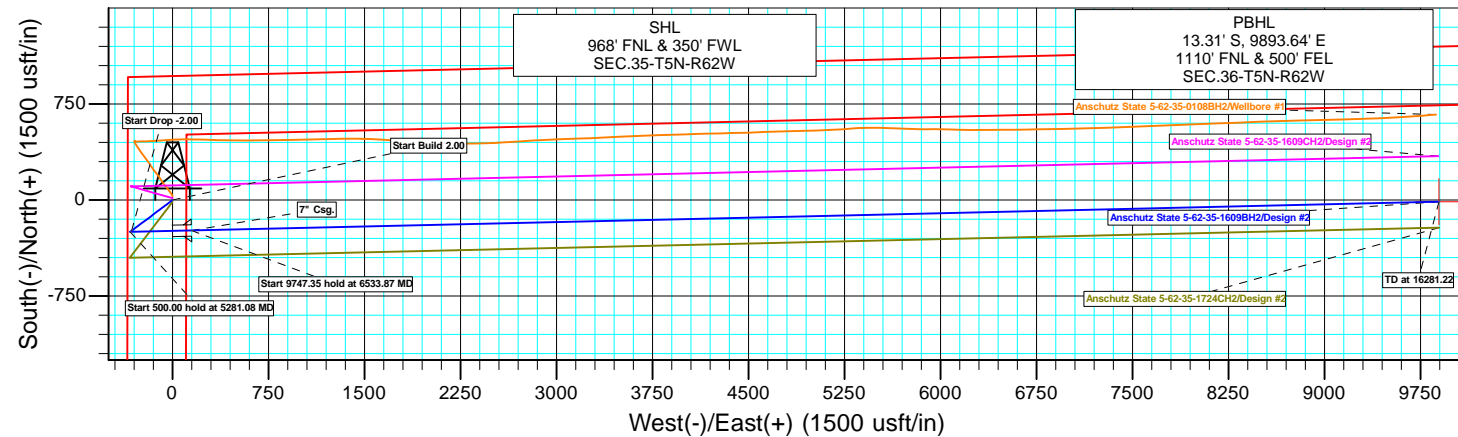
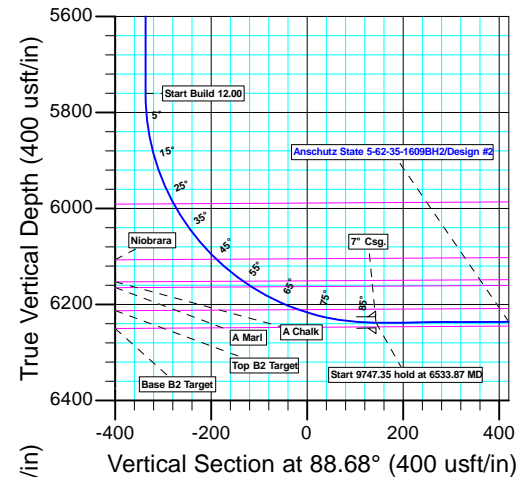
Geodetic System: US State Plane 1983  
Datum: North American Datum 1983  
Ellipsoid: GRS 1980  
Zone: Colorado Northern Zone  
System Datum: Mean Sea Level

## CASING DETAILS

TVD	MD	Name
6238.00	6533.87	7" Csg.

## WELLBORE TARGET DETAILS (LAT/LONG)

Name	TVD	+N/-S	+E/-W	Latitude	Longitude	Shape Point
Anschutz State 5-62-35-1609BH2 tgt	6181.00	-13.31	9893.64	40° 21' 39.510 N	104° 15' 47.920 W	



Plan: Design #2 (Anschutz State 5-62-35-1609BH2/Wellbore #1)

Created By: Ricky Osburn Date: 12:58, January 15 2015

<b>Database:</b>	EDMDBBW	<b>Local Co-ordinate Reference:</b>	Well Anschutz State 5-62-35-1609BH2
<b>Company:</b>	Bill Barrett Corp.	<b>TVD Reference:</b>	WELL @ 4663.00usft (Original Well Elev)
<b>Project:</b>	Weld Co., CO	<b>MD Reference:</b>	WELL @ 4663.00usft (Original Well Elev)
<b>Site:</b>	Sec.35-T5N-R62W	<b>North Reference:</b>	True
<b>Well:</b>	Anschutz State 5-62-35-1609BH2	<b>Survey Calculation Method:</b>	Minimum Curvature
<b>Wellbore:</b>	Wellbore #1		
<b>Design:</b>	Design #2		

<b>Project</b>	Weld Co., CO		
<b>Map System:</b>	US State Plane 1983	<b>System Datum:</b>	Mean Sea Level
<b>Geo Datum:</b>	North American Datum 1983		
<b>Map Zone:</b>	Colorado Northern Zone		

Site		Sec.35-T5N-R62W			
Site Position:		Northing:	1,375,286.395 usft	Latitude:	40° 21' 26.420 N
From:	Lat/Long	Easting:	3,334,739.959 usft	Longitude:	104° 17' 55.770 W
Position Uncertainty:	0.00 usft	Slot Radius:	13-3/16"	Grid Convergence:	0.78 °

Well	Anschutz State 5-62-35-1609BH2					
Well Position	+N/-S	1,339.86 usft	Northing:	1,376,626.177 usft	Latitude:	40° 21' 39.661 N
	+E/-W	3.07 usft	Easting:	3,334,724.875 usft	Longitude:	104° 17' 55.730 W
Position Uncertainty		0.00 usft	Wellhead Elevation:	usft	Ground Level:	4,640.00 usft

<b>Wellbore</b>	Wellbore #1				
<b>Magnetics</b>	<b>Model Name</b>	<b>Sample Date</b>	<b>Declination (°)</b>	<b>Dip Angle (°)</b>	<b>Field Strength (nT)</b>
	IGRF2010	2014/08/04	8.19	66.98	52,830

<b>Design</b>	Design #2			
<b>Audit Notes:</b>				
<b>Version:</b>	<b>Phase:</b>	PLAN	<b>Tie On Depth:</b>	0.00
<b>Vertical Section:</b>	<b>Depth From (TVD) (usft)</b>	<b>+N/-S (usft)</b>	<b>+E/-W (usft)</b>	<b>Direction (°)</b>
	0.00	0.00	0.00	88.68

<b>Plan Sections</b>										
Measured Depth (usft)	Inclination (°)	Azimuth (°)	Vertical Depth (usft)	+N/-S (usft)	+E/-W (usft)	Dogleg Rate (°/100usft)	Build Rate (°/100usft)	Turn Rate (°/100usft)	TFO (°)	Target
0.00	0.00	0.00	0.00	0.00	0.00	0.00	0.00	0.00	0.00	
900.00	0.00	0.00	900.00	0.00	0.00	0.00	0.00	0.00	0.00	
1,190.66	5.81	233.04	1,190.16	-8.86	-11.77	2.00	2.00	0.00	233.04	
4,990.42	5.81	233.04	4,970.38	-240.24	-319.31	0.00	0.00	0.00	0.00	
5,281.08	0.00	0.00	5,260.54	-249.10	-331.08	2.00	-2.00	0.00	180.00	
5,781.08	0.00	0.00	5,760.54	-249.10	-331.08	0.00	0.00	0.00	0.00	
6,533.87	90.34	88.68	6,238.00	-238.03	149.05	12.00	12.00	0.00	88.68	Anschutz State 5-62-35-1609BH2
16,281.22	90.34	88.68	6,181.00	-13.31	9,893.64	0.00	0.00	0.00	0.00	Anschutz State 5-62-35-1609BH2

<b>Database:</b>	EDMDBBW	<b>Local Co-ordinate Reference:</b>	Well Anschutz State 5-62-35-1609BH2
<b>Company:</b>	Bill Barrett Corp.	<b>TVD Reference:</b>	WELL @ 4663.00usft (Original Well Elev)
<b>Project:</b>	Weld Co., CO	<b>MD Reference:</b>	WELL @ 4663.00usft (Original Well Elev)
<b>Site:</b>	Sec.35-T5N-R62W	<b>North Reference:</b>	True
<b>Well:</b>	Anschutz State 5-62-35-1609BH2	<b>Survey Calculation Method:</b>	Minimum Curvature
<b>Wellbore:</b>	Wellbore #1		
<b>Design:</b>	Design #2		

Planned Survey									
Measured Depth (usft)	Inclination (°)	Azimuth (°)	Vertical Depth (usft)	+N/-S (usft)	+E/-W (usft)	Vertical Section (usft)	Dogleg Rate (°/100usft)	Build Rate (°/100usft)	Turn Rate (°/100usft)
0.00	0.00	0.00	0.00	0.00	0.00	0.00	0.00	0.00	0.00
100.00	0.00	0.00	100.00	0.00	0.00	0.00	0.00	0.00	0.00
200.00	0.00	0.00	200.00	0.00	0.00	0.00	0.00	0.00	0.00
300.00	0.00	0.00	300.00	0.00	0.00	0.00	0.00	0.00	0.00
400.00	0.00	0.00	400.00	0.00	0.00	0.00	0.00	0.00	0.00
500.00	0.00	0.00	500.00	0.00	0.00	0.00	0.00	0.00	0.00
600.00	0.00	0.00	600.00	0.00	0.00	0.00	0.00	0.00	0.00
700.00	0.00	0.00	700.00	0.00	0.00	0.00	0.00	0.00	0.00
800.00	0.00	0.00	800.00	0.00	0.00	0.00	0.00	0.00	0.00
<b>Start Build 2.00</b>									
900.00	0.00	0.00	900.00	0.00	0.00	0.00	0.00	0.00	0.00
1,000.00	2.00	233.04	999.98	-1.05	-1.39	-1.42	2.00	2.00	0.00
1,100.00	4.00	233.04	1,099.84	-4.20	-5.58	-5.67	2.00	2.00	0.00
<b>Start 3799.76 hold at 1190.66 MD</b>									
1,190.66	5.81	233.04	1,190.16	-8.86	-11.77	-11.97	2.00	2.00	0.00
1,200.00	5.81	233.04	1,199.45	-9.43	-12.53	-12.74	0.00	0.00	0.00
1,300.00	5.81	233.04	1,298.94	-15.52	-20.62	-20.97	0.00	0.00	0.00
1,400.00	5.81	233.04	1,398.43	-21.61	-28.72	-29.21	0.00	0.00	0.00
1,500.00	5.81	233.04	1,497.91	-27.69	-36.81	-37.44	0.00	0.00	0.00
1,600.00	5.81	233.04	1,597.40	-33.78	-44.90	-45.67	0.00	0.00	0.00
1,700.00	5.81	233.04	1,696.88	-39.87	-53.00	-53.90	0.00	0.00	0.00
1,800.00	5.81	233.04	1,796.37	-45.96	-61.09	-62.13	0.00	0.00	0.00
1,900.00	5.81	233.04	1,895.85	-52.05	-69.18	-70.36	0.00	0.00	0.00
2,000.00	5.81	233.04	1,995.34	-58.14	-77.28	-78.60	0.00	0.00	0.00
2,100.00	5.81	233.04	2,094.83	-64.23	-85.37	-86.83	0.00	0.00	0.00
2,200.00	5.81	233.04	2,194.31	-70.32	-93.46	-95.06	0.00	0.00	0.00
2,300.00	5.81	233.04	2,293.80	-76.41	-101.56	-103.29	0.00	0.00	0.00
2,400.00	5.81	233.04	2,393.28	-82.50	-109.65	-111.52	0.00	0.00	0.00
2,500.00	5.81	233.04	2,492.77	-88.59	-117.74	-119.75	0.00	0.00	0.00
2,600.00	5.81	233.04	2,592.25	-94.68	-125.84	-127.99	0.00	0.00	0.00
2,700.00	5.81	233.04	2,691.74	-100.77	-133.93	-136.22	0.00	0.00	0.00
2,800.00	5.81	233.04	2,791.23	-106.86	-142.03	-144.45	0.00	0.00	0.00
2,900.00	5.81	233.04	2,890.71	-112.95	-150.12	-152.68	0.00	0.00	0.00
3,000.00	5.81	233.04	2,990.20	-119.04	-158.21	-160.91	0.00	0.00	0.00
3,100.00	5.81	233.04	3,089.68	-125.13	-166.31	-169.14	0.00	0.00	0.00
3,200.00	5.81	233.04	3,189.17	-131.22	-174.40	-177.38	0.00	0.00	0.00
3,300.00	5.81	233.04	3,288.65	-137.31	-182.49	-185.61	0.00	0.00	0.00
3,400.00	5.81	233.04	3,388.14	-143.39	-190.59	-193.84	0.00	0.00	0.00
3,500.00	5.81	233.04	3,487.63	-149.48	-198.68	-202.07	0.00	0.00	0.00
3,600.00	5.81	233.04	3,587.11	-155.57	-206.77	-210.30	0.00	0.00	0.00
3,700.00	5.81	233.04	3,686.60	-161.66	-214.87	-218.53	0.00	0.00	0.00
3,800.00	5.81	233.04	3,786.08	-167.75	-222.96	-226.77	0.00	0.00	0.00
3,900.00	5.81	233.04	3,885.57	-173.84	-231.05	-235.00	0.00	0.00	0.00
4,000.00	5.81	233.04	3,985.05	-179.93	-239.15	-243.23	0.00	0.00	0.00
4,100.00	5.81	233.04	4,084.54	-186.02	-247.24	-251.46	0.00	0.00	0.00
<b>Sussex</b>									
4,175.38	5.81	233.04	4,159.53	-190.61	-253.34	-257.67	0.00	0.00	0.00
4,200.00	5.81	233.04	4,184.03	-192.11	-255.33	-259.69	0.00	0.00	0.00
4,300.00	5.81	233.04	4,283.51	-198.20	-263.43	-267.92	0.00	0.00	0.00
4,400.00	5.81	233.04	4,383.00	-204.29	-271.52	-276.16	0.00	0.00	0.00
4,500.00	5.81	233.04	4,482.48	-210.38	-279.62	-284.39	0.00	0.00	0.00
4,600.00	5.81	233.04	4,581.97	-216.47	-287.71	-292.62	0.00	0.00	0.00
4,700.00	5.81	233.04	4,681.45	-222.56	-295.80	-300.85	0.00	0.00	0.00

<b>Database:</b>	EDMDBBW	<b>Local Co-ordinate Reference:</b>	Well Anschutz State 5-62-35-1609BH2
<b>Company:</b>	Bill Barrett Corp.	<b>TVD Reference:</b>	WELL @ 4663.00usft (Original Well Elev)
<b>Project:</b>	Weld Co., CO	<b>MD Reference:</b>	WELL @ 4663.00usft (Original Well Elev)
<b>Site:</b>	Sec.35-T5N-R62W	<b>North Reference:</b>	True
<b>Well:</b>	Anschutz State 5-62-35-1609BH2	<b>Survey Calculation Method:</b>	Minimum Curvature
<b>Wellbore:</b>	Wellbore #1		
<b>Design:</b>	Design #2		

Planned Survey									
Measured Depth (usft)	Inclination (°)	Azimuth (°)	Vertical Depth (usft)	+N/-S (usft)	+E/-W (usft)	Vertical Section (usft)	Dogleg Rate (°/100usft)	Build Rate (°/100usft)	Turn Rate (°/100usft)
Shannon									
4,712.40	5.81	233.04	4,693.79	-223.31	-296.81	-301.87	0.00	0.00	0.00
4,800.00	5.81	233.04	4,780.94	-228.65	-303.90	-309.08	0.00	0.00	0.00
4,900.00	5.81	233.04	4,880.43	-234.74	-311.99	-317.31	0.00	0.00	0.00
Start Drop -2.00									
4,990.42	5.81	233.04	4,970.38	-240.24	-319.31	-324.76	0.00	0.00	0.00
5,000.00	5.62	233.04	4,979.91	-240.82	-320.07	-325.53	2.00	-2.00	0.00
5,100.00	3.62	233.04	5,079.58	-245.66	-326.51	-332.08	2.00	-2.00	0.00
5,200.00	1.62	233.04	5,179.47	-248.41	-330.16	-335.80	2.00	-2.00	0.00
Start 500.00 hold at 5281.08 MD									
5,281.08	0.00	0.00	5,260.54	-249.10	-331.08	-336.73	2.00	-2.00	0.00
5,300.00	0.00	0.00	5,279.46	-249.10	-331.08	-336.73	0.00	0.00	0.00
5,400.00	0.00	0.00	5,379.46	-249.10	-331.08	-336.73	0.00	0.00	0.00
5,500.00	0.00	0.00	5,479.46	-249.10	-331.08	-336.73	0.00	0.00	0.00
5,600.00	0.00	0.00	5,579.46	-249.10	-331.08	-336.73	0.00	0.00	0.00
5,700.00	0.00	0.00	5,679.46	-249.10	-331.08	-336.73	0.00	0.00	0.00
Start Build 12.00									
5,781.08	0.00	0.00	5,760.54	-249.10	-331.08	-336.73	0.00	0.00	0.00
5,800.00	2.27	88.68	5,779.46	-249.09	-330.71	-336.36	12.00	12.00	0.00
5,825.00	5.27	88.68	5,804.40	-249.05	-329.06	-334.71	12.00	12.00	0.00
5,850.00	8.27	88.68	5,829.22	-248.99	-326.12	-331.76	12.00	12.00	0.00
5,875.00	11.27	88.68	5,853.86	-248.89	-321.87	-327.52	12.00	12.00	0.00
5,900.00	14.27	88.68	5,878.24	-248.76	-316.35	-322.00	12.00	12.00	0.00
5,925.00	17.27	88.68	5,902.29	-248.60	-309.56	-315.20	12.00	12.00	0.00
5,950.00	20.27	88.68	5,925.96	-248.42	-301.52	-307.16	12.00	12.00	0.00
5,975.00	23.27	88.68	5,949.17	-248.20	-292.25	-297.89	12.00	12.00	0.00
6,000.00	26.27	88.68	5,971.87	-247.96	-281.78	-287.41	12.00	12.00	0.00
Sharon Springs									
6,021.18	28.81	88.68	5,990.65	-247.74	-271.99	-277.62	12.00	12.00	0.00
6,025.00	29.27	88.68	5,993.99	-247.69	-270.13	-275.77	12.00	12.00	0.00
6,050.00	32.27	88.68	6,015.47	-247.40	-257.35	-262.98	12.00	12.00	0.00
6,075.00	35.27	88.68	6,036.25	-247.08	-243.46	-249.08	12.00	12.00	0.00
6,100.00	38.27	88.68	6,056.27	-246.73	-228.50	-234.12	12.00	12.00	0.00
6,125.00	41.27	88.68	6,075.48	-246.37	-212.51	-218.13	12.00	12.00	0.00
6,150.00	44.27	88.68	6,093.83	-245.97	-195.54	-201.15	12.00	12.00	0.00
Niobrara									
6,167.47	46.37	88.68	6,106.12	-245.69	-183.12	-188.73	12.00	12.00	0.00
6,175.00	47.27	88.68	6,111.27	-245.56	-177.63	-183.24	12.00	12.00	0.00
6,200.00	50.27	88.68	6,127.75	-245.13	-158.84	-164.44	12.00	12.00	0.00
6,225.00	53.27	88.68	6,143.21	-244.68	-139.21	-144.81	12.00	12.00	0.00
A Chalk									
6,239.64	55.03	88.68	6,151.79	-244.40	-127.34	-132.94	12.00	12.00	0.00
6,250.00	56.27	88.68	6,157.63	-244.20	-118.79	-124.39	12.00	12.00	0.00
A Marl									
6,261.09	57.60	88.68	6,163.68	-243.99	-109.50	-115.09	12.00	12.00	0.00
6,275.00	59.27	88.68	6,170.96	-243.72	-97.65	-103.24	12.00	12.00	0.00
6,300.00	62.27	88.68	6,183.17	-243.21	-75.84	-81.43	12.00	12.00	0.00
6,325.00	65.27	88.68	6,194.22	-242.70	-53.43	-59.00	12.00	12.00	0.00
6,350.00	68.27	88.68	6,204.08	-242.17	-30.46	-36.03	12.00	12.00	0.00
Top B2 Target									
6,370.03	70.67	88.68	6,211.10	-241.74	-11.71	-17.27	12.00	12.00	0.00
6,375.00	71.27	88.68	6,212.72	-241.63	-7.01	-12.58	12.00	12.00	0.00
6,400.00	74.27	88.68	6,220.13	-241.08	16.86	11.30	12.00	12.00	0.00

<b>Database:</b>	EDMDBBW	<b>Local Co-ordinate Reference:</b>	Well Anschutz State 5-62-35-1609BH2
<b>Company:</b>	Bill Barrett Corp.	<b>TVD Reference:</b>	WELL @ 4663.00usft (Original Well Elev)
<b>Project:</b>	Weld Co., CO	<b>MD Reference:</b>	WELL @ 4663.00usft (Original Well Elev)
<b>Site:</b>	Sec.35-T5N-R62W	<b>North Reference:</b>	True
<b>Well:</b>	Anschutz State 5-62-35-1609BH2	<b>Survey Calculation Method:</b>	Minimum Curvature
<b>Wellbore:</b>	Wellbore #1		
<b>Design:</b>	Design #2		

Planned Survey									
Measured Depth (usft)	Inclination (°)	Azimuth (°)	Vertical Depth (usft)	+N/-S (usft)	+E/-W (usft)	Vertical Section (usft)	Dogleg Rate (°/100usft)	Build Rate (°/100usft)	Turn Rate (°/100usft)
6,425.00	77.27	88.68	6,226.27	-240.52	41.08	35.53	12.00	12.00	0.00
6,450.00	80.27	88.68	6,231.14	-239.95	65.59	60.05	12.00	12.00	0.00
6,475.00	83.27	88.68	6,234.72	-239.38	90.32	84.79	12.00	12.00	0.00
6,500.00	86.27	88.68	6,236.99	-238.81	115.21	109.68	12.00	12.00	0.00
6,525.00	89.27	88.68	6,237.97	-238.23	140.18	134.66	12.00	12.00	0.00
<b>Start 9747.35 hold at 6533.87 MD - 7" Csg.</b>									
6,533.87	90.34	88.68	6,238.00	-238.03	149.05	143.53	12.00	12.00	0.00
6,600.00	90.34	88.68	6,237.61	-236.50	215.16	209.66	0.00	0.00	0.00
6,700.00	90.34	88.68	6,237.03	-234.20	315.13	309.65	0.00	0.00	0.00
6,800.00	90.34	88.68	6,236.44	-231.89	415.10	409.65	0.00	0.00	0.00
6,900.00	90.34	88.68	6,235.86	-229.59	515.08	509.65	0.00	0.00	0.00
7,000.00	90.34	88.68	6,235.27	-227.28	615.05	609.65	0.00	0.00	0.00
7,100.00	90.34	88.68	6,234.69	-224.98	715.02	709.65	0.00	0.00	0.00
7,200.00	90.34	88.68	6,234.10	-222.67	814.99	809.65	0.00	0.00	0.00
7,300.00	90.34	88.68	6,233.52	-220.37	914.96	909.64	0.00	0.00	0.00
7,400.00	90.34	88.68	6,232.93	-218.06	1,014.93	1,009.64	0.00	0.00	0.00
7,500.00	90.34	88.68	6,232.35	-215.75	1,114.91	1,109.64	0.00	0.00	0.00
7,600.00	90.34	88.68	6,231.76	-213.45	1,214.88	1,209.64	0.00	0.00	0.00
7,700.00	90.34	88.68	6,231.18	-211.14	1,314.85	1,309.64	0.00	0.00	0.00
7,800.00	90.34	88.68	6,230.59	-208.84	1,414.82	1,409.64	0.00	0.00	0.00
7,900.00	90.34	88.68	6,230.01	-206.53	1,514.79	1,509.63	0.00	0.00	0.00
8,000.00	90.34	88.68	6,229.42	-204.23	1,614.77	1,609.63	0.00	0.00	0.00
8,100.00	90.34	88.68	6,228.84	-201.92	1,714.74	1,709.63	0.00	0.00	0.00
8,200.00	90.34	88.68	6,228.25	-199.62	1,814.71	1,809.63	0.00	0.00	0.00
8,300.00	90.34	88.68	6,227.67	-197.31	1,914.68	1,909.63	0.00	0.00	0.00
8,400.00	90.34	88.68	6,227.09	-195.01	2,014.65	2,009.63	0.00	0.00	0.00
8,500.00	90.34	88.68	6,226.50	-192.70	2,114.62	2,109.62	0.00	0.00	0.00
8,600.00	90.34	88.68	6,225.92	-190.40	2,214.60	2,209.62	0.00	0.00	0.00
8,700.00	90.34	88.68	6,225.33	-188.09	2,314.57	2,309.62	0.00	0.00	0.00
8,800.00	90.34	88.68	6,224.75	-185.78	2,414.54	2,409.62	0.00	0.00	0.00
8,900.00	90.34	88.68	6,224.16	-183.48	2,514.51	2,509.62	0.00	0.00	0.00
9,000.00	90.34	88.68	6,223.58	-181.17	2,614.48	2,609.61	0.00	0.00	0.00
9,100.00	90.34	88.68	6,222.99	-178.87	2,714.45	2,709.61	0.00	0.00	0.00
9,200.00	90.34	88.68	6,222.41	-176.56	2,814.43	2,809.61	0.00	0.00	0.00
9,300.00	90.34	88.68	6,221.82	-174.26	2,914.40	2,909.61	0.00	0.00	0.00
9,400.00	90.34	88.68	6,221.24	-171.95	3,014.37	3,009.61	0.00	0.00	0.00
9,500.00	90.34	88.68	6,220.65	-169.65	3,114.34	3,109.61	0.00	0.00	0.00
9,600.00	90.34	88.68	6,220.07	-167.34	3,214.31	3,209.60	0.00	0.00	0.00
9,700.00	90.34	88.68	6,219.48	-165.04	3,314.28	3,309.60	0.00	0.00	0.00
9,800.00	90.34	88.68	6,218.90	-162.73	3,414.26	3,409.60	0.00	0.00	0.00
9,900.00	90.34	88.68	6,218.31	-160.42	3,514.23	3,509.60	0.00	0.00	0.00
10,000.00	90.34	88.68	6,217.73	-158.12	3,614.20	3,609.60	0.00	0.00	0.00
10,100.00	90.34	88.68	6,217.14	-155.81	3,714.17	3,709.60	0.00	0.00	0.00
10,200.00	90.34	88.68	6,216.56	-153.51	3,814.14	3,809.59	0.00	0.00	0.00
10,300.00	90.34	88.68	6,215.98	-151.20	3,914.11	3,909.59	0.00	0.00	0.00
10,400.00	90.34	88.68	6,215.39	-148.90	4,014.09	4,009.59	0.00	0.00	0.00
10,500.00	90.34	88.68	6,214.81	-146.59	4,114.06	4,109.59	0.00	0.00	0.00
10,600.00	90.34	88.68	6,214.22	-144.29	4,214.03	4,209.59	0.00	0.00	0.00
10,700.00	90.34	88.68	6,213.64	-141.98	4,314.00	4,309.59	0.00	0.00	0.00
10,800.00	90.34	88.68	6,213.05	-139.68	4,413.97	4,409.58	0.00	0.00	0.00
10,900.00	90.34	88.68	6,212.47	-137.37	4,513.94	4,509.58	0.00	0.00	0.00
11,000.00	90.34	88.68	6,211.88	-135.07	4,613.92	4,609.58	0.00	0.00	0.00
11,100.00	90.34	88.68	6,211.30	-132.76	4,713.89	4,709.58	0.00	0.00	0.00

<b>Database:</b>	EDMDBBW	<b>Local Co-ordinate Reference:</b>	Well Anschutz State 5-62-35-1609BH2
<b>Company:</b>	Bill Barrett Corp.	<b>TVD Reference:</b>	WELL @ 4663.00usft (Original Well Elev)
<b>Project:</b>	Weld Co., CO	<b>MD Reference:</b>	WELL @ 4663.00usft (Original Well Elev)
<b>Site:</b>	Sec.35-T5N-R62W	<b>North Reference:</b>	True
<b>Well:</b>	Anschutz State 5-62-35-1609BH2	<b>Survey Calculation Method:</b>	Minimum Curvature
<b>Wellbore:</b>	Wellbore #1		
<b>Design:</b>	Design #2		

Planned Survey									
Measured Depth (usft)	Inclination (°)	Azimuth (°)	Vertical Depth (usft)	+N/-S (usft)	+E/-W (usft)	Vertical Section (usft)	Dogleg Rate (°/100usft)	Build Rate (°/100usft)	Turn Rate (°/100usft)
11,200.00	90.34	88.68	6,210.71	-130.45	4,813.86	4,809.58	0.00	0.00	0.00
11,300.00	90.34	88.68	6,210.13	-128.15	4,913.83	4,909.58	0.00	0.00	0.00
11,400.00	90.34	88.68	6,209.54	-125.84	5,013.80	5,009.57	0.00	0.00	0.00
11,500.00	90.34	88.68	6,208.96	-123.54	5,113.77	5,109.57	0.00	0.00	0.00
11,600.00	90.34	88.68	6,208.37	-121.23	5,213.75	5,209.57	0.00	0.00	0.00
11,700.00	90.34	88.68	6,207.79	-118.93	5,313.72	5,309.57	0.00	0.00	0.00
11,800.00	90.34	88.68	6,207.20	-116.62	5,413.69	5,409.57	0.00	0.00	0.00
11,900.00	90.34	88.68	6,206.62	-114.32	5,513.66	5,509.57	0.00	0.00	0.00
12,000.00	90.34	88.68	6,206.04	-112.01	5,613.63	5,609.56	0.00	0.00	0.00
12,100.00	90.34	88.68	6,205.45	-109.71	5,713.61	5,709.56	0.00	0.00	0.00
12,200.00	90.34	88.68	6,204.87	-107.40	5,813.58	5,809.56	0.00	0.00	0.00
12,300.00	90.34	88.68	6,204.28	-105.10	5,913.55	5,909.56	0.00	0.00	0.00
12,400.00	90.34	88.68	6,203.70	-102.79	6,013.52	6,009.56	0.00	0.00	0.00
12,500.00	90.34	88.68	6,203.11	-100.48	6,113.49	6,109.55	0.00	0.00	0.00
12,600.00	90.34	88.68	6,202.53	-98.18	6,213.46	6,209.55	0.00	0.00	0.00
12,700.00	90.34	88.68	6,201.94	-95.87	6,313.44	6,309.55	0.00	0.00	0.00
12,800.00	90.34	88.68	6,201.36	-93.57	6,413.41	6,409.55	0.00	0.00	0.00
12,900.00	90.34	88.68	6,200.77	-91.26	6,513.38	6,509.55	0.00	0.00	0.00
13,000.00	90.34	88.68	6,200.19	-88.96	6,613.35	6,609.55	0.00	0.00	0.00
13,100.00	90.34	88.68	6,199.60	-86.65	6,713.32	6,709.54	0.00	0.00	0.00
13,200.00	90.34	88.68	6,199.02	-84.35	6,813.29	6,809.54	0.00	0.00	0.00
13,300.00	90.34	88.68	6,198.43	-82.04	6,913.27	6,909.54	0.00	0.00	0.00
13,400.00	90.34	88.68	6,197.85	-79.74	7,013.24	7,009.54	0.00	0.00	0.00
13,500.00	90.34	88.68	6,197.26	-77.43	7,113.21	7,109.54	0.00	0.00	0.00
13,600.00	90.34	88.68	6,196.68	-75.12	7,213.18	7,209.54	0.00	0.00	0.00
13,700.00	90.34	88.68	6,196.10	-72.82	7,313.15	7,309.53	0.00	0.00	0.00
13,800.00	90.34	88.68	6,195.51	-70.51	7,413.12	7,409.53	0.00	0.00	0.00
13,900.00	90.34	88.68	6,194.93	-68.21	7,513.10	7,509.53	0.00	0.00	0.00
14,000.00	90.34	88.68	6,194.34	-65.90	7,613.07	7,609.53	0.00	0.00	0.00
14,100.00	90.34	88.68	6,193.76	-63.60	7,713.04	7,709.53	0.00	0.00	0.00
14,200.00	90.34	88.68	6,193.17	-61.29	7,813.01	7,809.53	0.00	0.00	0.00
14,300.00	90.34	88.68	6,192.59	-58.99	7,912.98	7,909.52	0.00	0.00	0.00
14,400.00	90.34	88.68	6,192.00	-56.68	8,012.95	8,009.52	0.00	0.00	0.00
14,500.00	90.34	88.68	6,191.42	-54.38	8,112.93	8,109.52	0.00	0.00	0.00
14,600.00	90.34	88.68	6,190.83	-52.07	8,212.90	8,209.52	0.00	0.00	0.00
14,700.00	90.34	88.68	6,190.25	-49.77	8,312.87	8,309.52	0.00	0.00	0.00
14,800.00	90.34	88.68	6,189.66	-47.46	8,412.84	8,409.52	0.00	0.00	0.00
14,900.00	90.34	88.68	6,189.08	-45.15	8,512.81	8,509.51	0.00	0.00	0.00
15,000.00	90.34	88.68	6,188.49	-42.85	8,612.78	8,609.51	0.00	0.00	0.00
15,100.00	90.34	88.68	6,187.91	-40.54	8,712.76	8,709.51	0.00	0.00	0.00
15,200.00	90.34	88.68	6,187.32	-38.24	8,812.73	8,809.51	0.00	0.00	0.00
15,300.00	90.34	88.68	6,186.74	-35.93	8,912.70	8,909.51	0.00	0.00	0.00
15,400.00	90.34	88.68	6,186.15	-33.63	9,012.67	9,009.51	0.00	0.00	0.00
15,500.00	90.34	88.68	6,185.57	-31.32	9,112.64	9,109.50	0.00	0.00	0.00
15,600.00	90.34	88.68	6,184.99	-29.02	9,212.62	9,209.50	0.00	0.00	0.00
15,700.00	90.34	88.68	6,184.40	-26.71	9,312.59	9,309.50	0.00	0.00	0.00
15,800.00	90.34	88.68	6,183.82	-24.41	9,412.56	9,409.50	0.00	0.00	0.00
15,900.00	90.34	88.68	6,183.23	-22.10	9,512.53	9,509.50	0.00	0.00	0.00
16,000.00	90.34	88.68	6,182.65	-19.79	9,612.50	9,609.50	0.00	0.00	0.00
16,100.00	90.34	88.68	6,182.06	-17.49	9,712.47	9,709.49	0.00	0.00	0.00
16,200.00	90.34	88.68	6,181.48	-15.18	9,812.45	9,809.49	0.00	0.00	0.00
TD at 16281.22									
16,281.22	90.34	88.68	6,181.00	-13.31	9,893.64	9,890.71	0.00	0.00	0.00



<b>Database:</b>	EDMDBBW	<b>Local Co-ordinate Reference:</b>	Well Anschutz State 5-62-35-1609BH2
<b>Company:</b>	Bill Barrett Corp.	<b>TVD Reference:</b>	WELL @ 4663.00usft (Original Well Elev)
<b>Project:</b>	Weld Co., CO	<b>MD Reference:</b>	WELL @ 4663.00usft (Original Well Elev)
<b>Site:</b>	Sec.35-T5N-R62W	<b>North Reference:</b>	True
<b>Well:</b>	Anschutz State 5-62-35-1609BH2	<b>Survey Calculation Method:</b>	Minimum Curvature
<b>Wellbore:</b>	Wellbore #1		
<b>Design:</b>	Design #2		

Design Targets									
Target Name	Dip Angle	Dip Dir.	TVD	+N/-S	+E/-W	Northing	Easting	Latitude	Longitude
- hit/miss target	(°)	(°)	(usft)	(usft)	(usft)	(usft)	(usft)		
- Shape									
Anschutz State 5-62-35-	0.00	0.00	6,181.00	-13.31	9,893.64	1,376,746.882	3,344,617.792	40° 21' 39.510 N	104° 15' 47.920 W
- plan hits target center									
- Point									

Casing Points					
Measured Depth	Vertical Depth	Name		Casing Diameter	Hole Diameter
(usft)	(usft)			(")	(")
6,533.87	6,238.00	7" Csg.		7	8-3/4

Formations						
Measured Depth	Vertical Depth	Name		Lithology	Dip	Dip Direction
(usft)	(usft)				(°)	(°)
4,175.38	4,158.00	Sussex			-0.34	88.68
4,712.40	4,692.00	Shannon			-0.34	88.68
6,021.18	5,989.00	Sharon Springs			-0.34	88.64
6,167.47	6,105.00	Niobrara			-0.34	88.68
6,239.64	6,151.00	A Chalk			-0.34	88.68
6,261.09	6,163.00	A Marl			-0.34	88.68
6,370.03	6,211.00	Top B2 Target			-0.34	88.68

Plan Annotations					
Measured Depth	Vertical Depth	Local Coordinates		Comment	
(usft)	(usft)	+N/-S	+E/-W		
(usft)	(usft)	(usft)	(usft)		
900.00	900.00	0.00	0.00	Start Build 2.00	
1,190.66	1,190.16	-8.86	-11.77	Start 3799.76 hold at 1190.66 MD	
4,990.42	4,970.38	-240.24	-319.31	Start Drop -2.00	
5,281.08	5,260.54	-249.10	-331.08	Start 500.00 hold at 5281.08 MD	
5,781.08	5,760.54	-249.10	-331.08	Start Build 12.00	
6,533.87	6,238.00	-238.03	149.05	Start 9747.35 hold at 6533.87 MD	
16,281.22	6,181.00	-13.31	9,893.64	TD at 16281.22	