

WPX Energy Rocky Mtn LLC

Hicks PA 44-6

API #05-045-22409-00

788' FSL x 2219' FWL - (SESW) - SHL

801' FSL x 1837' FEL - (SWSE) - BHL

Sec. 6-T7S-R95W

Garfield County, Colorado

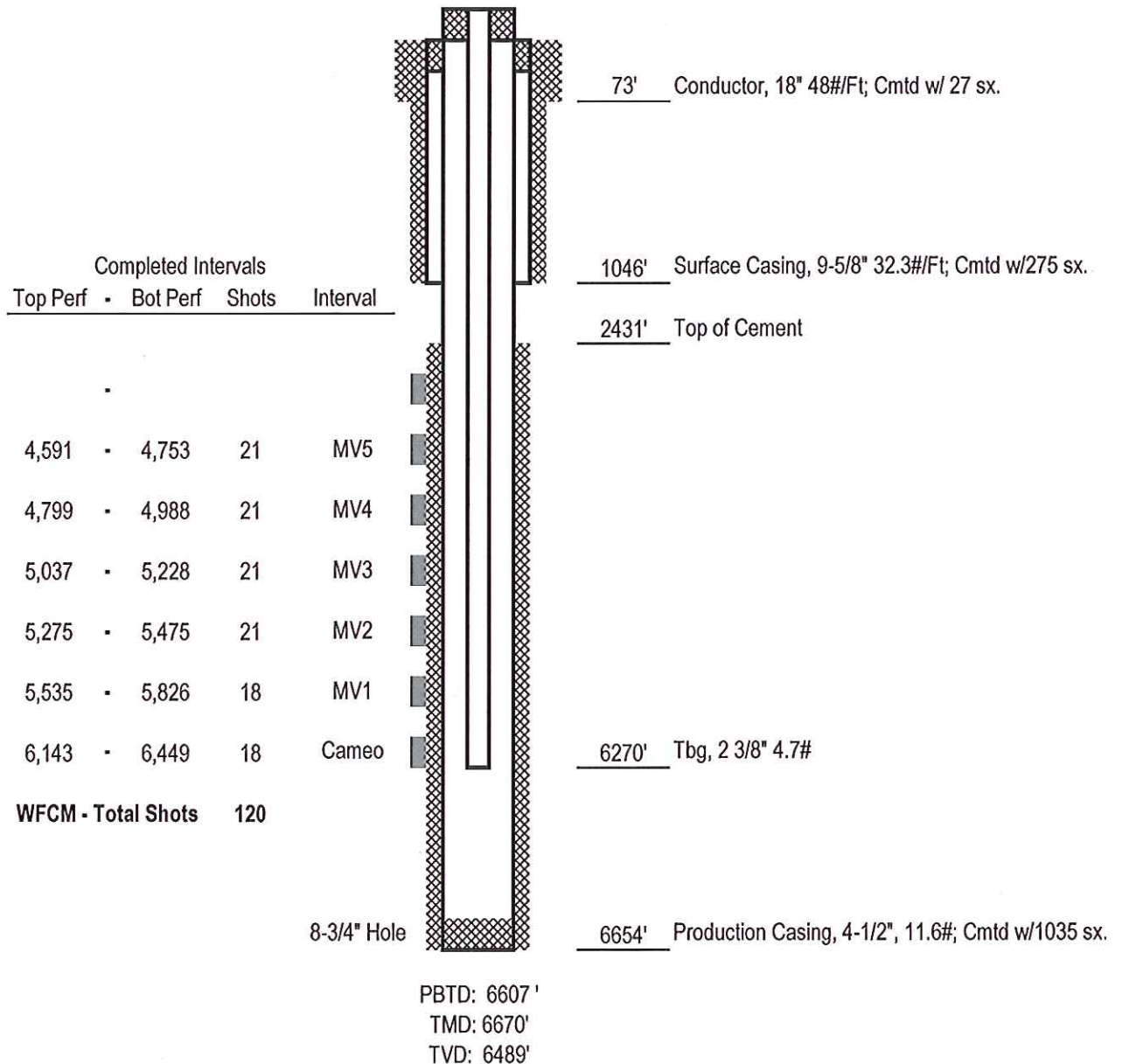
Parachute Prospect

FINAL

DATED 01/14/2015

Formation Tops

G Sand	953'
Mesa Verde	3468'
Cameo	5967'
Rollins	6510'



NOTE: Not to Scale