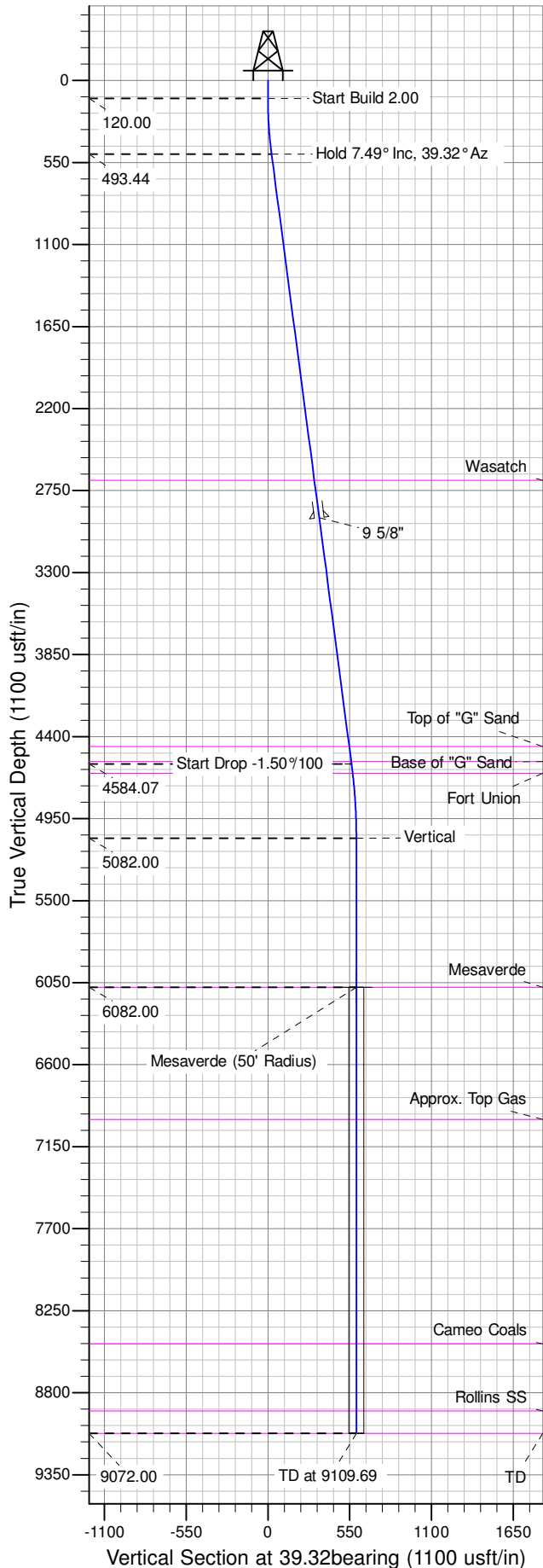
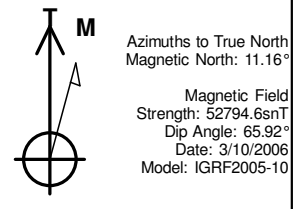
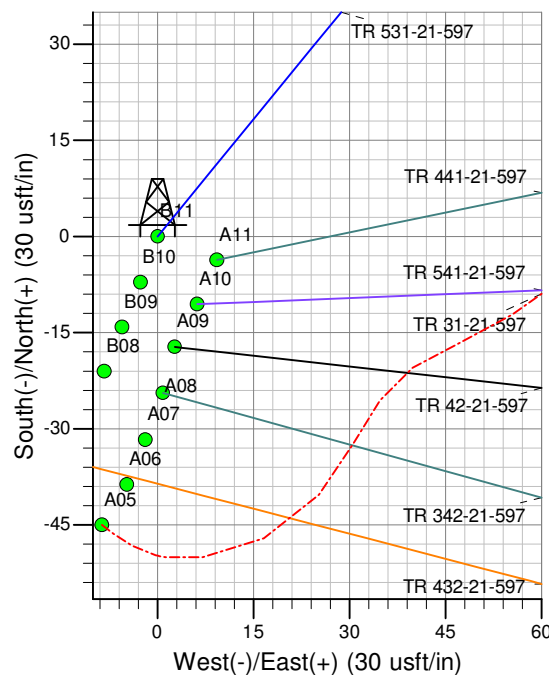
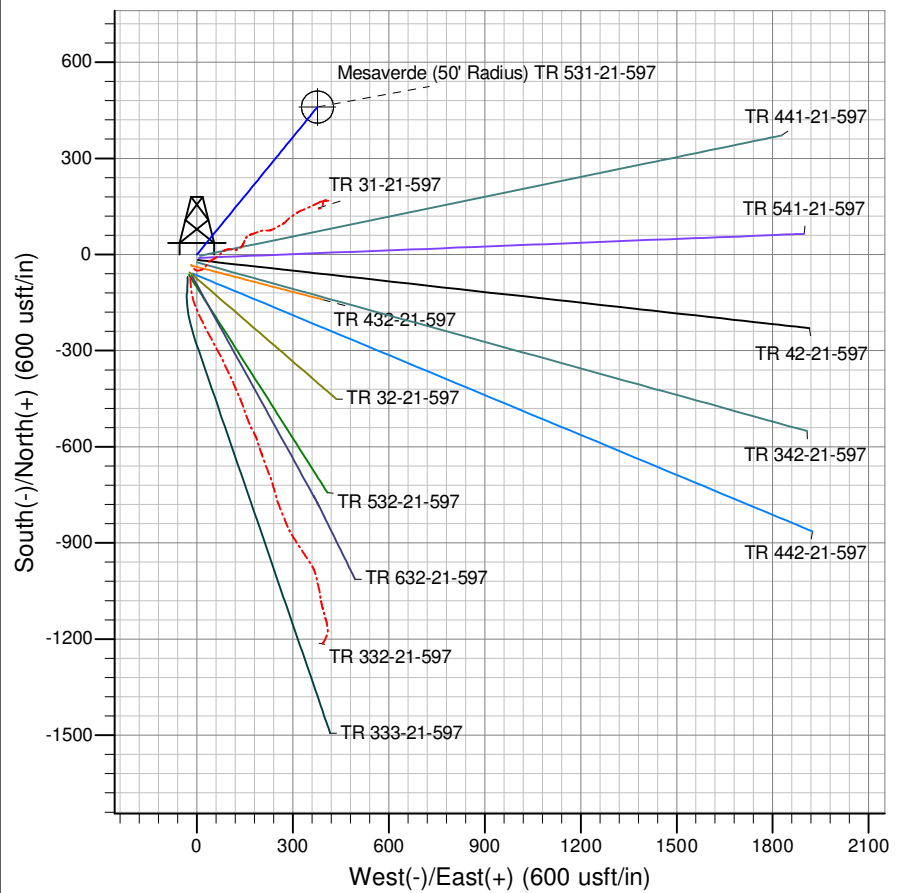




Well Name: TR 531-21-597  
Surface Location: TR 32-21-597 Pad  
North American Datum 1983 , US State Plane 1983 , Colorado Central Zone  
Ground Elevation: 8576.00  
+N/-S +E/-W Northing Easting Latitude Longitude Slot  
0.00 0.00 1656451.68324 2216174.91496 39.602800 -108.282203 B 11  
KELLY BUSHING @ 8602.00usft (Nabors 573 (26' RKB) mab)



ANNOTATIONS									
TVD	MD	Inc	Azi	+N/-S	+E/-W	Vsect	Departure	Annotation	
120.00	120.00	0.00	0.00	0.00	0.00	0.00	0.00	Start Build 2.00	Start Build 2.00
493.44	494.51	7.49	39.32	18.91	15.49	24.44	24.44	Hold 7.49° Inc, 39.32° Az	Hold 7.49° Inc, 39.32° Az
4584.07	4620.34	7.49	39.32	434.96	356.32	562.28	562.28	Start Drop -1.50%100	Start Drop -1.50%100
5082.00	5119.69	0.00	0.00	460.18	376.97	594.87	594.87	Vertical	Vertical
6082.00	6119.69	0.00	0.00	460.18	376.97	594.87	594.87	Mesaverde	Mesaverde
9072.00	9109.69	0.00	0.00	460.18	376.97	594.87	594.87	TD at 9109.69	TD at 9109.69



Project: TR 21-05S-097W  
Site: TR 32-21-597 Pad  
Well: TR 531-21-597  
Plan #4 30Jul14 mab