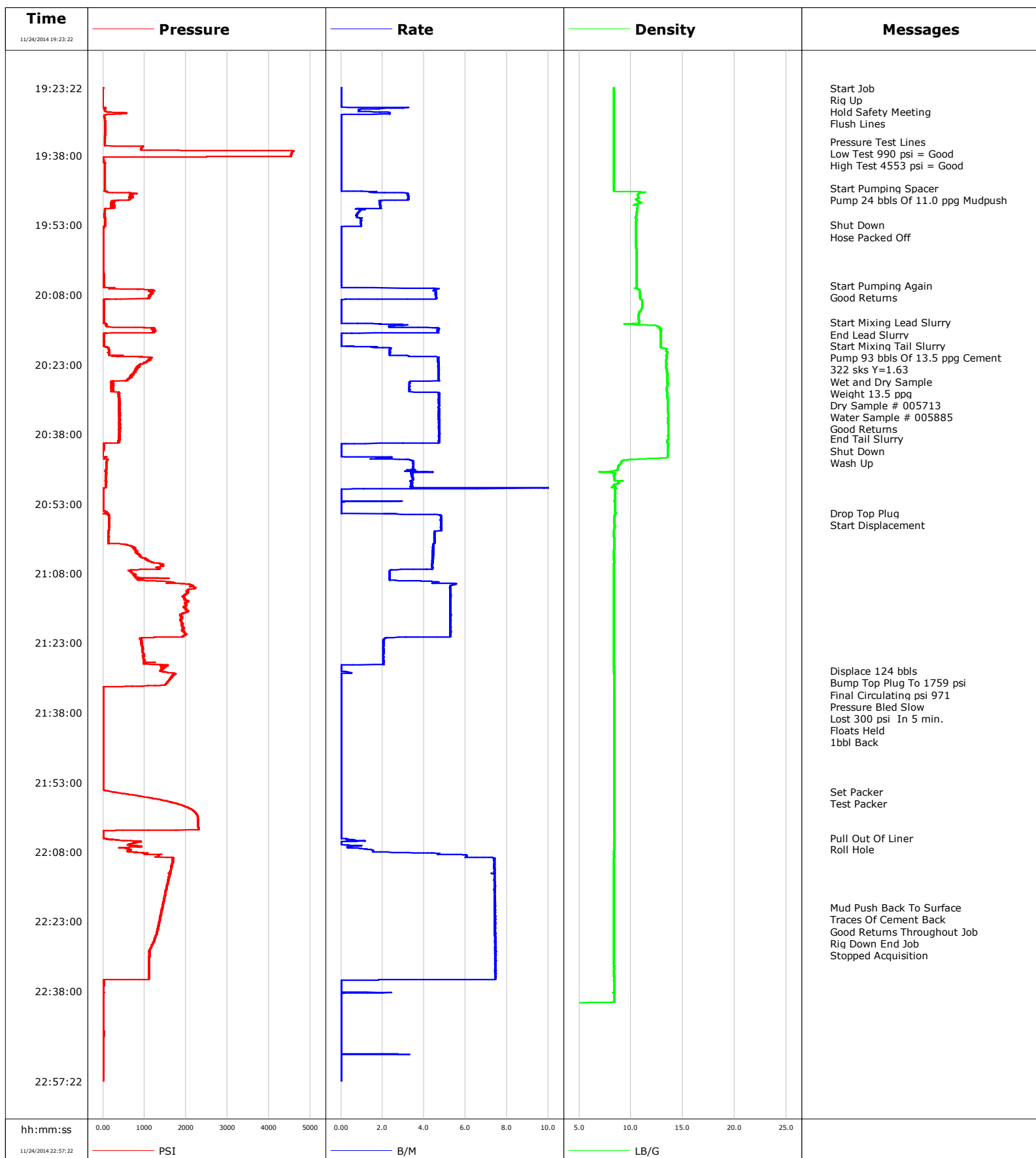


Well Windsor LV F #14-H
Field Waternberg
Engineer Justin Zika/Morrow
Country United States

Client Extraction Oil Gas
SIR No.
Job Type Liner
Job Date 11-24-2014

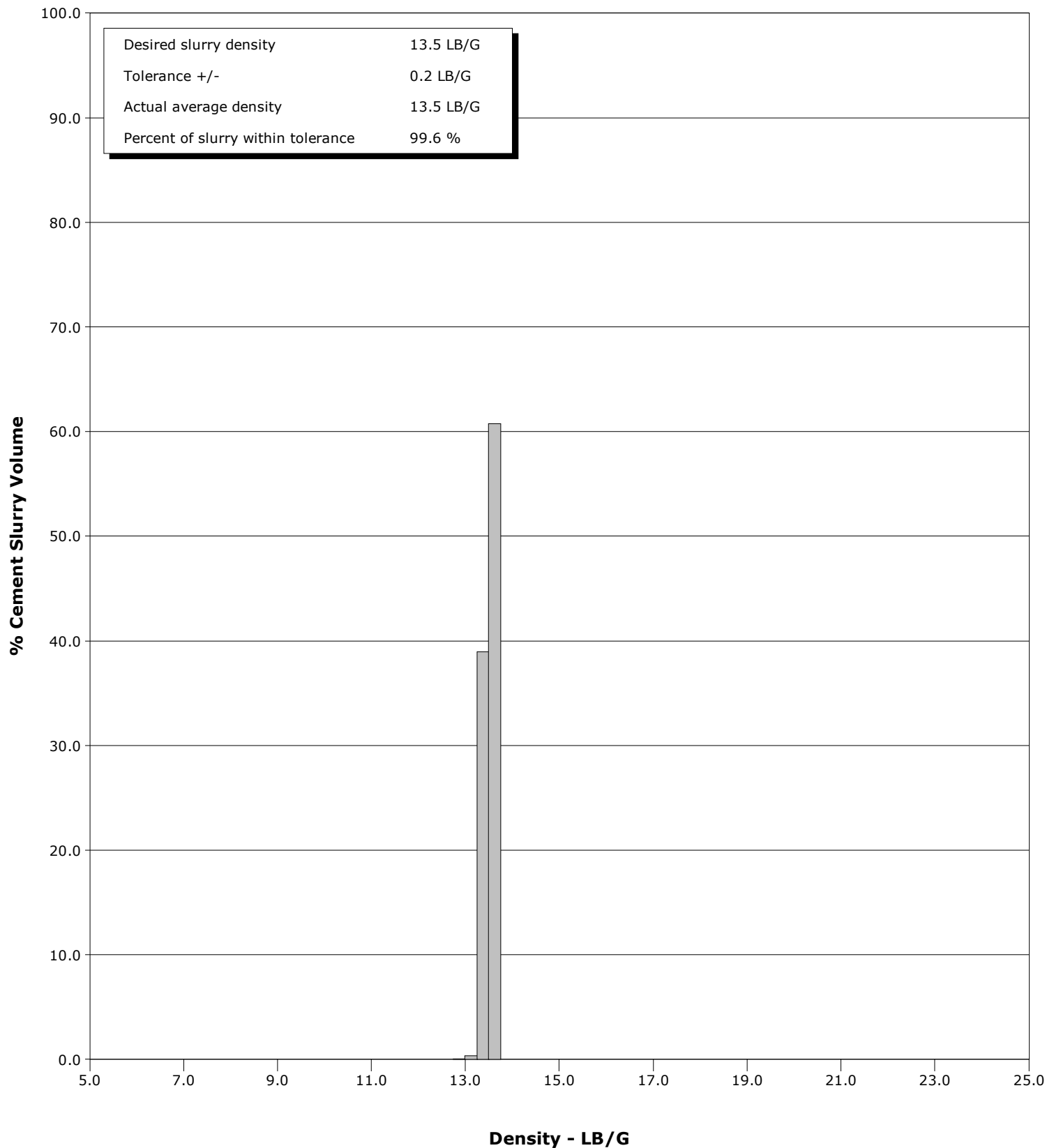


Schlumberger Cementing Qa/Qc Density Report

Well Windsor LV F #14-H
Field Watternberg
Engineer Justin Zika/Morrow
Country United States

Client Extraction Oil Gas
SIR No.
Job Type Liner
Job Date 11-24-2014

Cement Slurry - 11/24/2014 20:19:25 to 11/24/2014 20:38:57





Cementing Service Report

				Customer Extraction Oil & Gas		Job Number 2061478		
Well Windsor LV F #14-H F #14-H			Location (legal) Cheyenne,WY		Schlumberger Location Cheyenne, WY		Job Start Nov/24/2014	
Field Watternberg		Formation Name/Type Shale		Deviation	Bit Size 6.1 in	Well MD 11822.0 ft	Well TVD 7247.0 ft	
County Weld		State/Province Colorado		BHP	BHST 210 degF	BHCT 210 degF	Pore Press. Gradient	
Well Master 0631501172		API/UWI 05123381750000						
Rig Name H&P 319		Drilled For Oil	Service Via Land	Casing/Liner				
				Depth, ft	Size, in	Weight, lb/ft	Grade	Thread
Offshore Zone		Well Class New	Well Type Development	11818.0	4.500	13.5	110	8RD
				0.0	0.000	0.0		
Drilling Fluid Type		Max. Density	Plastic Viscosity	Tubing/Drill Pipe				
				Depth, ft	Size, in	Weight, lb/ft	Grade	Thread
Service Line Cementing		Job Type Liner		6746.0	4.000	0.0		
				0.0	0.000	0.0		
Max. Allowed Tub. Press 3000 psi		Max. Allowed Ann. Press	WH Connection	Perforations/Open Hole				
				Top,	Bottom,		No. of Shots	Total Interval
								Diameter
				Treat Down Casing	Displacement 138.0 bbl	Packer Type	Packer Depth	
				Tubing Vol.	Casing Vol. 138.0 bbl	Annular Vol. 239.8 bbl	Openhole Vol. 377.8 bbl	
Casing/Tubing Secured <input checked="" type="checkbox"/>		1 Hole Vol. Circulated prior to Cement <input checked="" type="checkbox"/>		Casing Tools		Squeeze Job		
Lift Pressure				Shoe Type Float		Squeeze Type		
Pipe Rotated <input type="checkbox"/>		Pipe Reciprocated <input type="checkbox"/>		Shoe Depth 11818.0 ft		Tool Type		
No. Centralizers		Top Plugs	Bottom Plugs	Stage Tool Type		Tool Depth		
Cement Head Type				Stage Tool Depth		Tail Pipe Size		
Job Scheduled For Nov/24/2014 15:00		Arrived on Location Nov/24/2014 15:00		Leave Location Nov/25/2014 00:00		Collar Type Float		Tail Pipe Depth
						Collar Depth 11813.0 ft		Sqz. Total Vol.
Date	Time 24-hr clock	Treating Pressure PSI	Flow Rate B/M	Density LB/G	Volume BBL	Message		
11/24/2014	17:52:34					Started Acquisition		
11/24/2014	19:23:22					Start Job		
11/24/2014	19:23:22	3	0.0	8.38	0.0			
11/24/2014	19:23:25					Rig Up		
11/24/2014	19:23:25					Hold Safety Meeting		
11/24/2014	19:23:25	3	0.0	8.38	0.0			
11/24/2014	19:23:26					Flush Lines		
11/24/2014	19:23:26	2	0.0	8.38	0.0			
11/24/2014	19:24:14	-1	0.0	8.38	0.0			
11/24/2014	19:25:54	-1	0.0	8.38	0.0			
11/24/2014	19:27:34	-1	0.0	8.38	0.0			
11/24/2014	19:29:14	80	0.0	8.38	2.6			
11/24/2014	19:30:54	49	0.0	8.38	2.6			
11/24/2014	19:32:34	49	0.0	8.38	2.6			
11/24/2014	19:34:14	48	0.0	8.38	2.6			
11/24/2014	19:35:00					Pressure Test Lines		
11/24/2014	19:35:00					Low Test 990 psi = Good		
11/24/2014	19:35:00					High Test 4553 psi = Good		
11/24/2014	19:35:00	46	0.0	8.38	2.6			
11/24/2014	19:35:54	47	0.0	8.38	2.6			
11/24/2014	19:37:34	4543	0.0	8.38	2.6			

Well Windsor LV F #14-H F #14-H			Field Watternberg		Job Start Nov/24/2014		Customer Extraction Oil & Gas		Job Number 2061478	
Date	Time 24-hr clock	Treating Pressure PSI	Flow Rate B/M	Density LB/G	Volume BBL	Message				
11/24/2014	19:40:54	43	0.0	8.38	2.6					
11/24/2014	19:42:34	41	0.0	8.38	2.6					
11/24/2014	19:44:14	40	0.0	8.38	2.6					
11/24/2014	19:45:00					Start Pumping Spacer				
11/24/2014	19:45:00					Pump 24 bbls Of 11.0 ppg Mudpush				
11/24/2014	19:45:00	40	0.0	8.38	2.6					
11/24/2014	19:45:54	108	1.6	11.34	2.9					
11/24/2014	19:47:34	641	3.2	10.51	8.1					
11/24/2014	19:49:14	219	1.9	10.62	11.3					
11/24/2014	19:50:54	32	0.7	10.53	12.9					
11/24/2014	19:52:34	57	1.0	10.51	14.4					
11/24/2014	19:53:00					Shut Down				
11/24/2014	19:53:00					Hose Packed Off				
11/24/2014	19:53:00	57	1.0	10.50	14.9					
11/24/2014	19:54:14	11	0.0	10.51	15.1					
11/24/2014	19:55:54	10	0.0	10.51	15.1					
11/24/2014	19:57:34	10	0.0	10.52	15.1					
11/24/2014	19:59:14	11	0.0	10.55	15.1					
11/24/2014	20:00:54	11	0.0	10.55	15.1					
11/24/2014	20:02:34	11	0.0	10.55	15.1					
11/24/2014	20:04:14	13	0.0	10.56	15.1					
11/24/2014	20:05:54	15	0.0	10.56	15.1					
11/24/2014	20:06:00					Start Pumping Again				
11/24/2014	20:06:00					Good Returns				
11/24/2014	20:06:00	15	0.0	10.56	15.1					
11/24/2014	20:07:34	1152	4.6	10.84	19.7					
11/24/2014	20:09:14	14	0.0	11.06	26.0					
11/24/2014	20:10:54	12	0.0	11.04	26.0					
11/24/2014	20:12:34	12	0.0	10.75	26.0					
11/24/2014	20:14:00					Start Mixing Lead Slurry				
11/24/2014	20:14:00					End Lead Slurry				
11/24/2014	20:14:00	13	0.0	10.77	26.0					
11/24/2014	20:14:14	51	1.7	9.87	26.1					
11/24/2014	20:15:54	1215	4.7	12.91	32.1					
11/24/2014	20:17:34	14	0.0	12.88	33.7					
11/24/2014	20:19:00					Start Mixing Tail Slurry				
11/24/2014	20:19:00					Pump 93 bbls Of 13.5 ppg Cement				
11/24/2014	20:19:00					322 sks Y=1.63				
11/24/2014	20:19:00					Wet and Dry Sample				
11/24/2014	20:19:00					Weight 13.5 ppg				
11/24/2014	20:19:00					Dry Sample # 005713				
11/24/2014	20:19:00					Water Sample # 005885				
11/24/2014	20:19:00					Good Returns				
11/24/2014	20:19:00	13	0.0	12.89	33.7					
11/24/2014	20:19:14	89	1.7	12.83	33.9					
11/24/2014	20:20:54	154	2.3	13.45	37.7					
11/24/2014	20:22:34	1019	4.7	13.42	44.8					
11/24/2014	20:24:14	799	4.7	13.44	52.6					
11/24/2014	20:25:54	656	4.7	13.49	60.5					
11/24/2014	20:27:34	195	3.3	13.51	67.0					
11/24/2014	20:29:14	390	4.7	13.49	72.8					
11/24/2014	20:30:54	385	4.7	13.55	80.7					
11/24/2014	20:32:34	390	4.7	13.56	88.6					
11/24/2014	20:34:14	390	4.7	13.58	96.4					

Well			Field		Job Start		Customer		Job Number	
Windsor LV F #14-H F #14-H			Watternberg		Nov/24/2014		Extraction Oil & Gas		2061478	
Date	Time 24-hr clock	Treating Pressure PSI	Flow Rate B/M	Density LB/G	Volume BBL	Message				
11/24/2014	20:37:34	388	4.7	13.60	112.2					
11/24/2014	20:39:00					End Tail Slurry				
11/24/2014	20:39:00					Shut Down				
11/24/2014	20:39:00					Wash Up				
11/24/2014	20:39:00	375	4.7	13.58	119.0					
11/24/2014	20:39:14	395	4.7	13.57	120.1					
11/24/2014	20:40:54	17	0.0	13.56	123.7					
11/24/2014	20:42:34	-1	0.0	13.56	123.7					
11/24/2014	20:44:14	83	3.5	9.05	127.4					
11/24/2014	20:45:54	68	3.2	8.48	133.2					
11/24/2014	20:47:34	62	3.5	8.41	138.9					
11/24/2014	20:49:14	70	3.4	8.32	144.6					
11/24/2014	20:50:54	6	0.0	8.44	148.5					
11/24/2014	20:52:34	6	0.9	8.45	148.7					
11/24/2014	20:54:14	5	0.0	8.45	148.7					
11/24/2014	20:55:00					Drop Top Plug				
11/24/2014	20:55:00					Start Displacement				
11/24/2014	20:55:00	105	0.0	8.53	148.7					
11/24/2014	20:55:54	142	4.8	8.41	151.9					
11/24/2014	20:57:34	146	4.8	8.39	159.9					
11/24/2014	20:59:14	124	4.5	8.38	167.9					
11/24/2014	21:00:54	126	4.5	8.39	175.4					
11/24/2014	21:02:34	756	4.4	8.39	182.8					
11/24/2014	21:04:14	906	4.4	8.38	190.2					
11/24/2014	21:05:54	1360	4.4	8.38	197.5					
11/24/2014	21:07:34	669	2.3	8.38	204.2					
11/24/2014	21:09:14	859	2.3	8.38	208.1					
11/24/2014	21:10:54	2096	5.3	8.38	215.4					
11/24/2014	21:12:34	2008	5.3	8.38	224.2					
11/24/2014	21:14:14	2009	5.3	8.38	233.0					
11/24/2014	21:15:54	1996	5.3	8.38	241.8					
11/24/2014	21:17:34	1901	5.3	8.38	250.6					
11/24/2014	21:19:14	1897	5.3	8.38	259.4					
11/24/2014	21:20:54	1969	5.3	8.38	268.2					
11/24/2014	21:22:34	916	2.0	8.38	274.4					
11/24/2014	21:24:14	948	2.0	8.38	277.9					
11/24/2014	21:25:54	991	2.0	8.38	281.3					
11/24/2014	21:27:34	986	2.0	8.38	284.7					
11/24/2014	21:29:00					Displace 124 bbls				
11/24/2014	21:29:00					Bump Top Plug To 1759 psi				
11/24/2014	21:29:00					Final Circulating psi 971				
11/24/2014	21:29:00					Pressure Bled Slow				
11/24/2014	21:29:00					Lost 300 psi In 5 min.				
11/24/2014	21:29:00					Floats Held				
11/24/2014	21:29:00					1bbl Back				
11/24/2014	21:29:00	1426	0.0	8.38	285.0					
11/24/2014	21:29:14	1431	0.3	8.38	285.0					
11/24/2014	21:30:54	1613	0.0	8.38	285.1					
11/24/2014	21:32:34	4	0.0	8.38	285.1					
11/24/2014	21:34:14	7	0.0	8.38	285.1					
11/24/2014	21:35:54	5	0.0	8.38	285.1					
11/24/2014	21:37:34	4	0.0	8.38	285.1					
11/24/2014	21:39:14	5	0.0	8.38	285.1					
11/24/2014	21:40:54	5	0.0	8.38	285.1					

Well			Field		Job Start		Customer		Job Number	
Windsor LV F #14-H F #14-H			Wattenberg		Nov/24/2014		Extraction Oil & Gas		2061478	
Date	Time 24-hr clock	Treating Pressure PSI	Flow Rate B/M	Density LB/G	Volume BBL	Message				
11/24/2014	21:44:14	5	0.0	8.38	285.1					
11/24/2014	21:45:54	5	0.0	8.38	285.1					
11/24/2014	21:47:34	5	0.0	8.38	285.1					
11/24/2014	21:49:14	5	0.0	8.38	285.1					
11/24/2014	21:50:54	5	0.0	8.38	285.1					
11/24/2014	21:52:34	5	0.0	8.38	285.1					
11/24/2014	21:54:14	5	0.0	8.38	285.1					
11/24/2014	21:55:00					Set Packer				
11/24/2014	21:55:00	171	0.0	8.38	285.1					
11/24/2014	21:55:01					Test Packer				
11/24/2014	21:55:01	183	0.0	8.38	285.1					
11/24/2014	21:55:54	814	0.0	8.38	285.1					
11/24/2014	21:57:34	1750	0.0	8.38	285.1					
11/24/2014	21:59:14	2190	0.0	8.38	285.1					
11/24/2014	22:00:54	2287	0.0	8.38	285.1					
11/24/2014	22:02:34	2297	0.0	8.38	285.1					
11/24/2014	22:04:14	5	0.0	8.38	285.1					
11/24/2014	22:05:00					Pull Out Of Liner				
11/24/2014	22:05:00					Roll Hole				
11/24/2014	22:05:00	13	0.0	8.38	285.1					
11/24/2014	22:05:54	787	0.0	8.38	285.5					
11/24/2014	22:07:34	618	1.5	8.38	286.2					
11/24/2014	22:09:14	1701	7.1	8.38	293.0					
11/24/2014	22:10:54	1650	7.4	8.38	305.3					
11/24/2014	22:12:34	1616	7.4	8.38	317.6					
11/24/2014	22:14:14	1573	7.4	8.38	330.0					
11/24/2014	22:15:54	1538	7.4	8.38	342.3					
11/24/2014	22:17:34	1495	7.4	8.38	354.6					
11/24/2014	22:19:14	1451	7.4	8.38	367.0					
11/24/2014	22:20:02					Mud Push Back To Surface				
11/24/2014	22:20:02	1428	7.4	8.38	372.9					
11/24/2014	22:20:03					Traces Of Cement Back				
11/24/2014	22:20:03					Good Returns Throughout Job				
11/24/2014	22:20:03					Rig Down End Job				
11/24/2014	22:20:03	1431	7.4	8.38	373.0					
11/24/2014	22:20:54	1408	7.4	8.38	379.3					
11/24/2014	22:22:34	1379	7.4	8.38	391.7					
11/24/2014	22:24:14	1330	7.4	8.38	404.1					
11/24/2014	22:25:54	1284	7.4	8.38	416.4					
11/24/2014	22:27:34	1219	7.4	8.38	428.8					
11/24/2014	22:29:14	1121	7.4	8.38	441.2					
11/24/2014	22:30:54	1110	7.4	8.38	453.6					
11/24/2014	22:32:34	1106	7.4	8.38	466.0					
11/24/2014	22:34:14	1107	7.4	8.38	478.4					
11/24/2014	22:35:54	20	0.0	8.38	488.5					
11/24/2014	22:37:34	5	0.0	8.38	488.5					
11/24/2014	22:39:14	9	0.0	8.38	488.9					
11/24/2014	22:40:54	5	0.0	0.01	488.9					
11/24/2014	22:42:34	5	0.0	0.01	488.9					
11/24/2014	22:44:14	5	0.0	0.01	488.9					
11/24/2014	22:45:54	6	0.0	0.01	488.9					
11/24/2014	22:47:34	13	0.0	0.01	488.9					
11/24/2014	22:49:14	4	0.0	0.01	488.9					
11/24/2014	22:50:54	3	0.0	0.01	488.9					

Well Windsor LV F #14-H F #14-H			Field Watternberg		Job Start Nov/24/2014		Customer Extraction Oil & Gas		Job Number 2061478	
Date	Time 24-hr clock	Treating Pressure PSI		Flow Rate B/M	Density LB/G	Volume BBL		Message		
11/24/2014	22:54:14	3		0.0	0.01	489.1				
11/24/2014	22:55:54	3		0.0	0.01	489.1				

Post Job Summary

Average Pump Rates,					Volume of Fluid Injected, bbl			
Slurry	N2	Mud	Maximum Rate		Total Slurry 93.0	Mud	Spacer 30.0	N2
Treating Pressure Summary, psi					Breakdown Fluid			
Maximum 3000	Final 971	Average	Bump Plug to 1759	Breakdown	Type	Volume		Density
Avg. N2 Percent		Designed Slurry Volume 93.0 bbl	Displacement 138.0 bbl	Mix Water Temp 42 degF	Cement Circulated to Surface? <input checked="" type="checkbox"/>		Volume	
					Washed Thru Perfs <input type="checkbox"/>		To	
Customer or Authorized Representative Shawn McIntyre			Schlumberger Supervisor Justin Zika/Morrow			Circulation Lost <input type="checkbox"/>		Job Completed <input type="checkbox"/>
						-		-