



RADIAL CEMENT BOND LOG  
GAMMA RAY  
CCL

Company Kerr McGee Oil & Gas  
Well RAITH L 15-3  
Field Wattenberg  
County Weld State CO

Location: API # : 05-123-09832  
SHL: 990' FNL 1590' FWL  
SEC 15 TWP 3N RGE 66W  
Permanent Datum GL Elevation 4862  
Log Measured From KB: 10'  
Drilling Measured From KB  
Other Services  
Elevation  
K.B. 4872'  
D.F. 4874'  
G.L. 4862'

Company Kerr McGee Oil & Gas  
Well RAITH L 15-3  
Field Wattenberg  
County Weld  
State CO

Date	12-1-2014
Run Number	ONE
Depth Driller	7981'
Depth Logger	7703'
Bottom Logged Interval	7694'
Top Log Interval	4079'
Open Hole Size	7.875
Type Fluid	WATER
Density / Viscosity	1.0
Max. Recorded Temp.	231
Estimated Cement Top	7089'
Time Well Ready	NA
Time Logger on Bottom	NA
Equipment Number	7770
Location	GREELEY
Recorded By	J.FLORES
Witnessed By	D.POWELL

Borehole Record				Tubing Record			
Run Number	Bit	From	To	Size	Weight	From	To
ONE	12.25	SURFACE	526				
TWO	7.88	526	7981				

Casing Record	Size	Wgt/Ft	Top	Bottom
Surface String	8.625	24#	SURFACE	526'
Prot. String				
Production String	4.5	10.5#	SURFACE	7981'
Liner				

<<< Fold Here >>>

All interpretations are opinions based on inferences from electrical or other measurements and we cannot and do not guarantee the accuracy or correctness of any interpretation, and we shall not, except in the case of gross or willful negligence on our part, be liable or responsible for any loss, costs, damages, or expenses incurred or sustained by anyone resulting from any interpretation made by any of our officers, agents or employees. These interpretations are also subject to our general terms and conditions set out in our current Price Schedule.



Comments

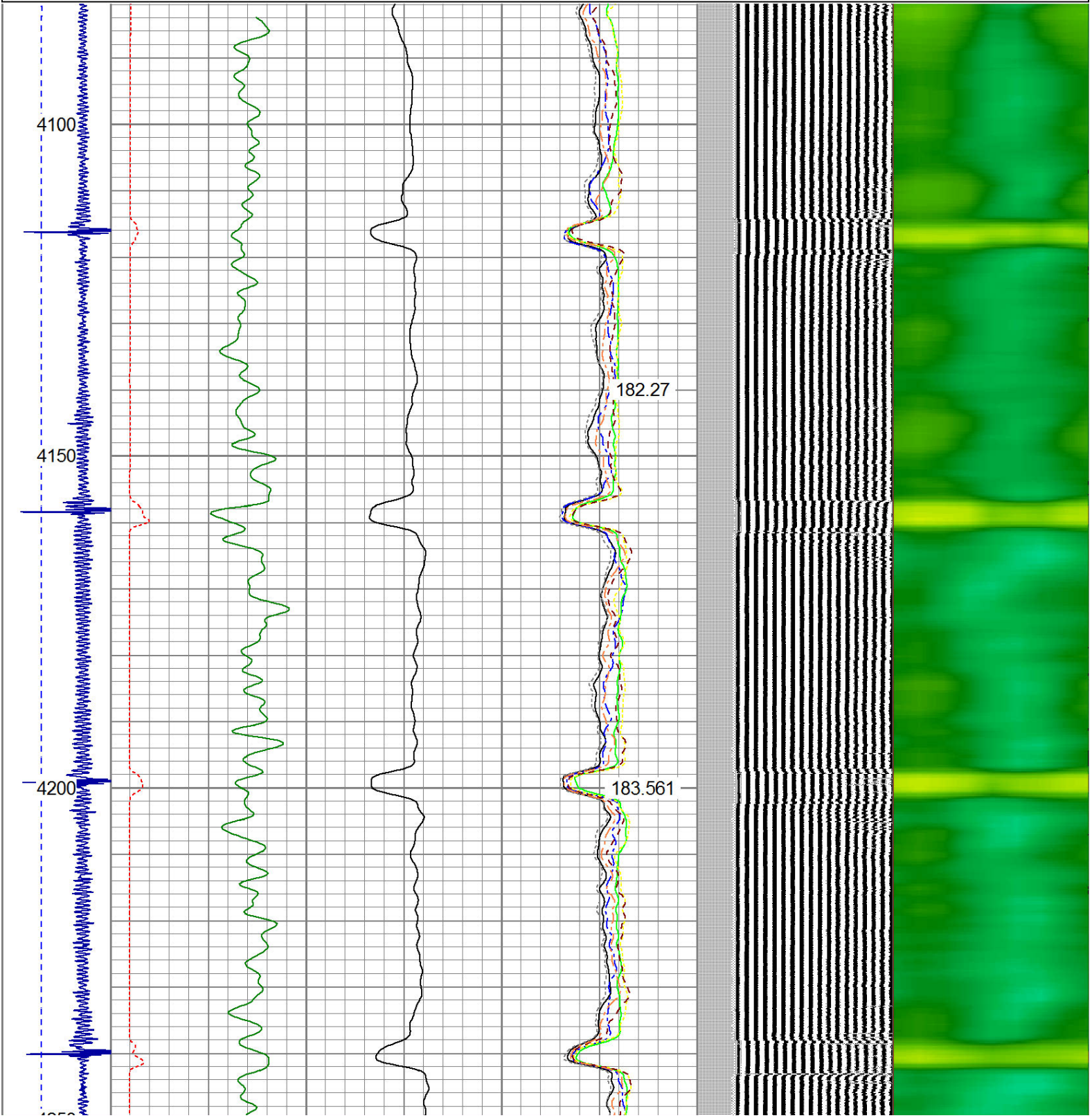
RAN OFF KB  
RAN CBL TO VERIFY CEMENT.

THANK YOU FOR USING WARRIOR ENERGY!

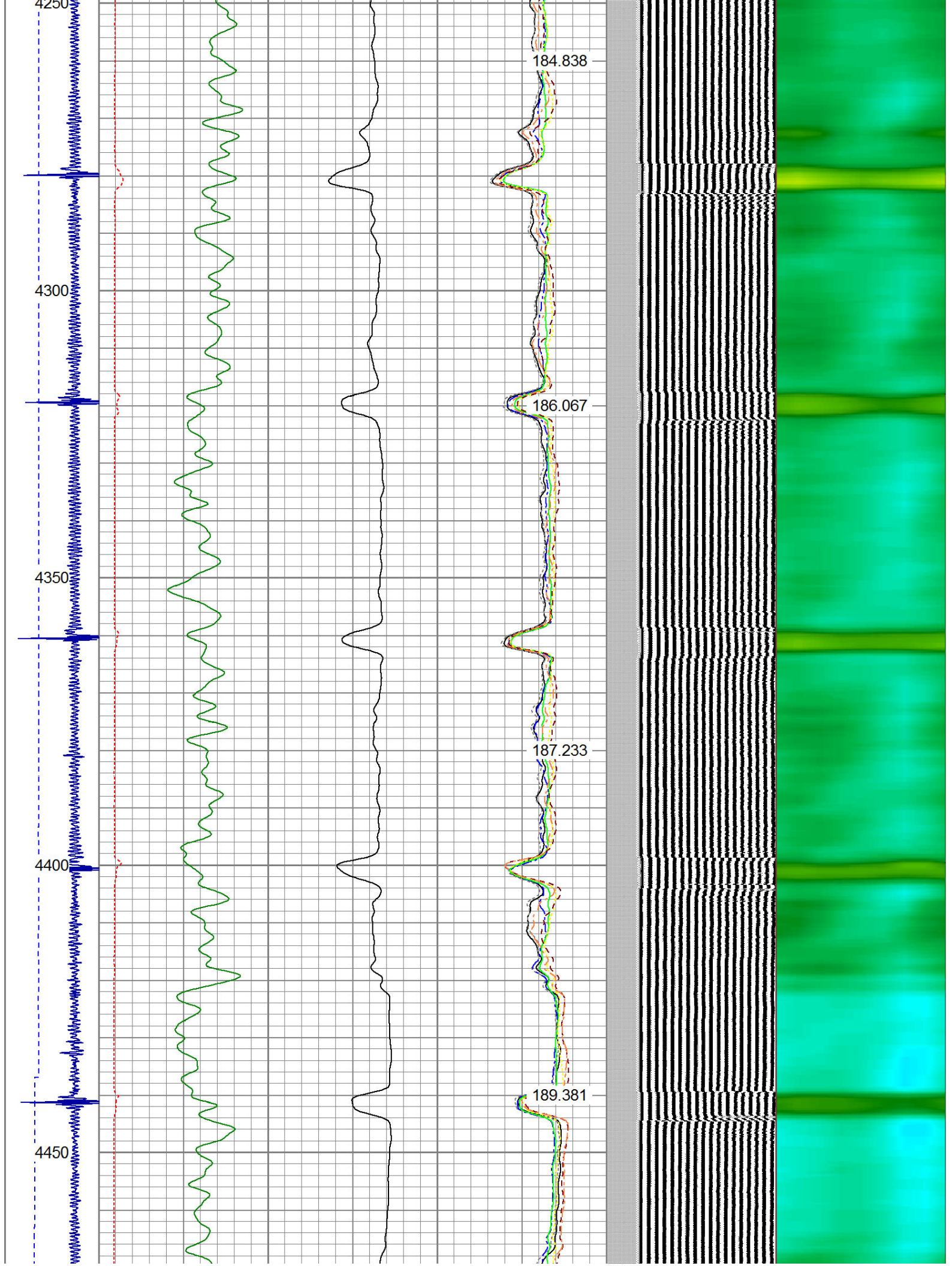
Sensor	Offset (ft)	Schematic	Description	Len (ft)	OD (in)	Wt (lb)

			CENT #2 -Probe (PTS_MONO)	2.75	2.75	35.00
HEADVOLT	16.00					
IntTemp	14.58					
WVF3FT	11.33		RBT-Probe (Base) Probe Radii Bond Tool with Digital Telemetry	8.92	2.75	90.00
WVFCAL	11.33					
WVFS1	11.33					
WVFS2	11.33					
WVFS3	11.33					
WVFS4	11.33					
WVFS5	11.33					
WVFS6	11.33					
WVFS7	11.33					
WVFS8	11.33					
WVF5FT	10.33					
			CENT-Probe (PT_MONO2)	2.75	2.75	35.00
CCL	3.64					
			GR-Probe (275) Probe 2.75"	4.33	2.75	30.00
GR	0.90					
<div style="display: flex; justify-content: space-between;"> <div>Dataset:</div> <div>reperf.db: field/well/run1/pass257</div> </div> <div style="display: flex; justify-content: space-between;"> <div>Total Length:</div> <div>18.75 ft</div> </div> <div style="display: flex; justify-content: space-between;"> <div>Total Weight:</div> <div>190.00 lb</div> </div> <div style="display: flex; justify-content: space-between;"> <div>O.D.</div> <div>2.75 in</div> </div>						

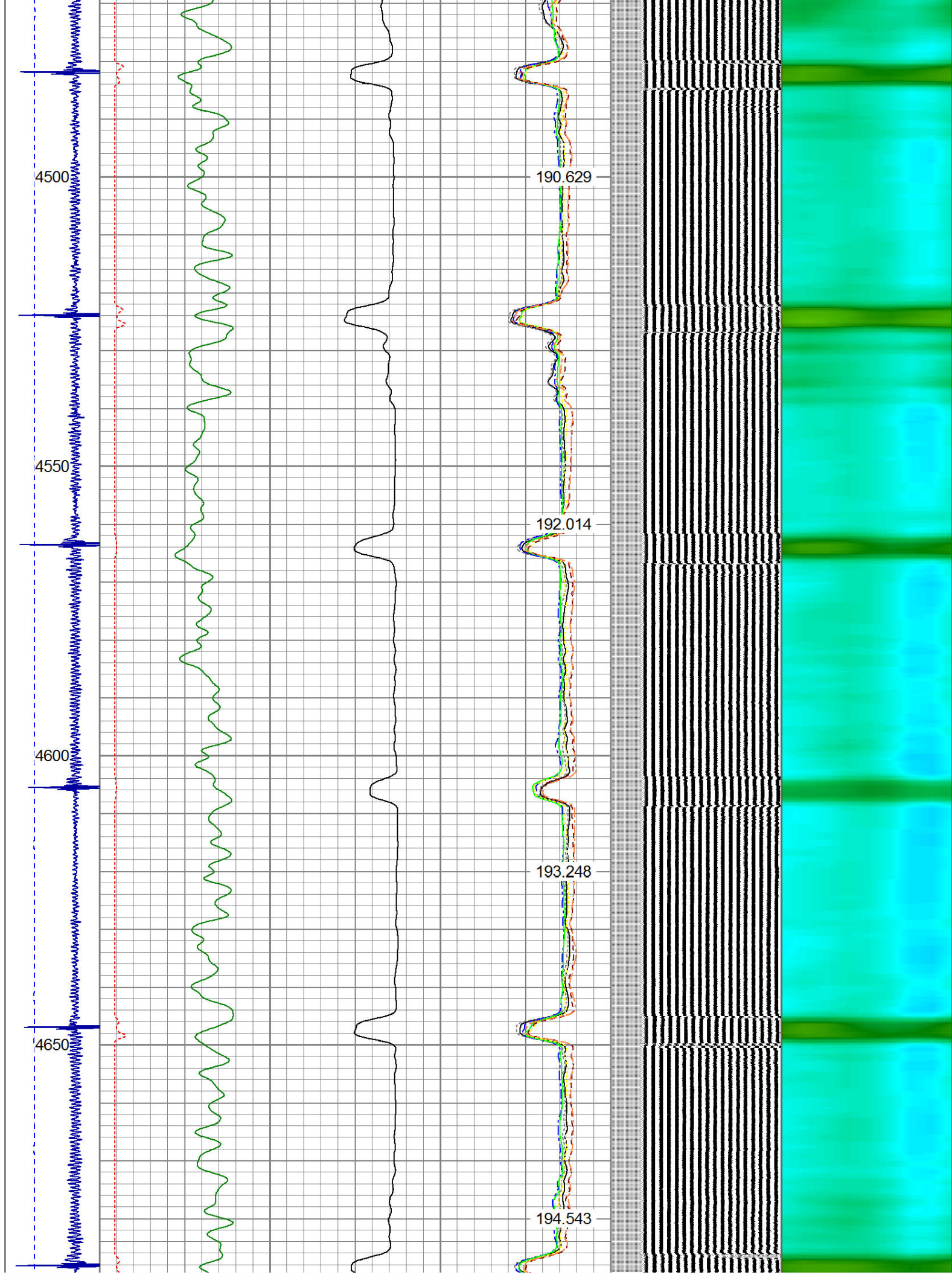
Dataset Creation:		Mon Dec 01 14:42:32 2014 by Log Std Casedhole 09061															
Charted by:		Depth in Feet scaled 1:240															
-9	CCL	3	200	TT (usec)	1000	0	AMP (mV)	100	0	AMPS1	100	200	VDL	1200	1	Cement Map	8
LSPD (ft/min)	0		0	GR (GAPI)	200	0	AMPx5 (mV)	20	0	AMPS2	100			1		100	
	200		200	GR (GAPI)	400			0		0	AMPS4	100					
0		-250						0		0	AMPS5	100					
								0		0	AMPS6	100					
								0		0	AMPS7	100					
								0		0	AMPS8	100					
										IntTemp							
										(degF)							



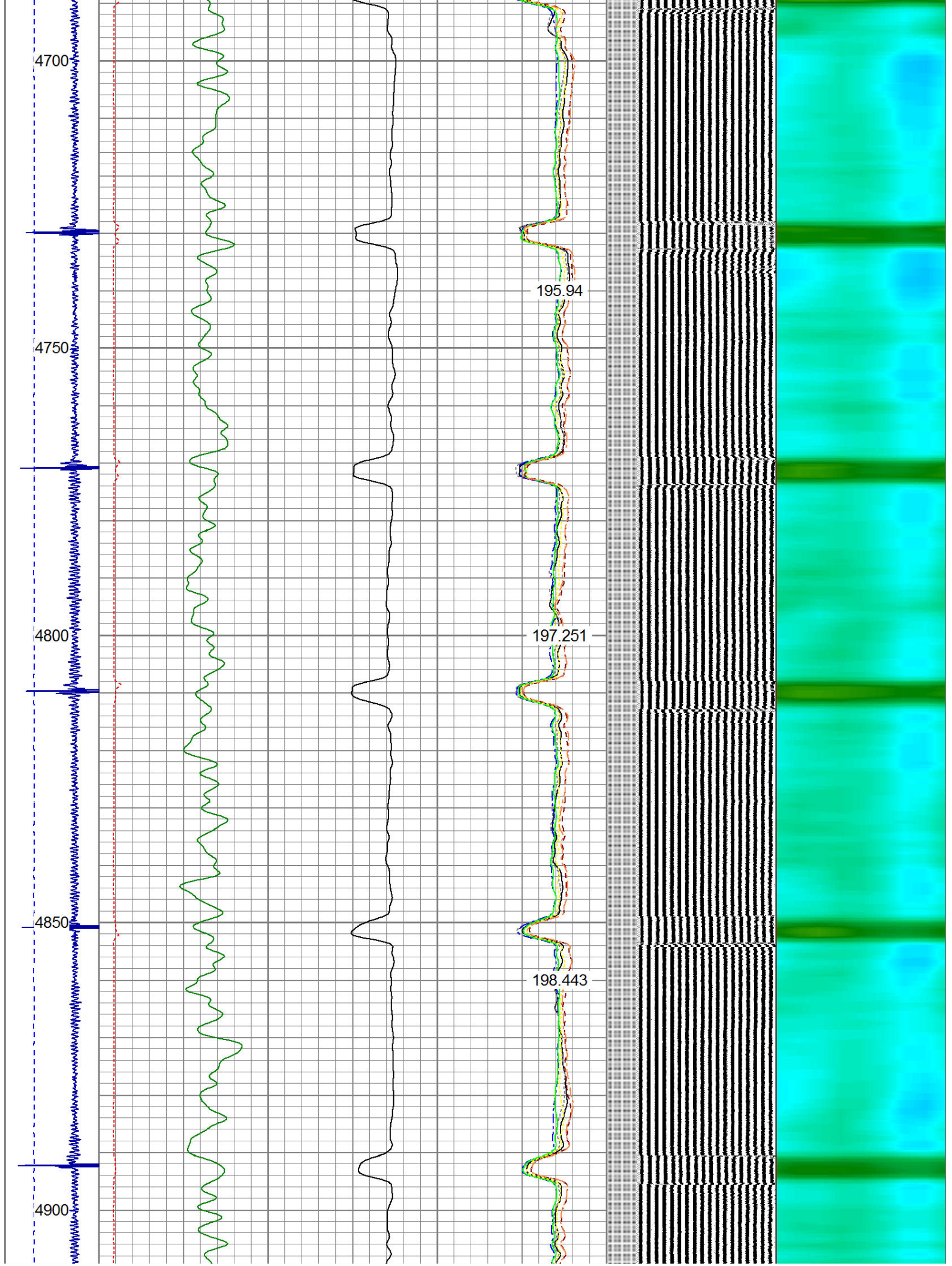




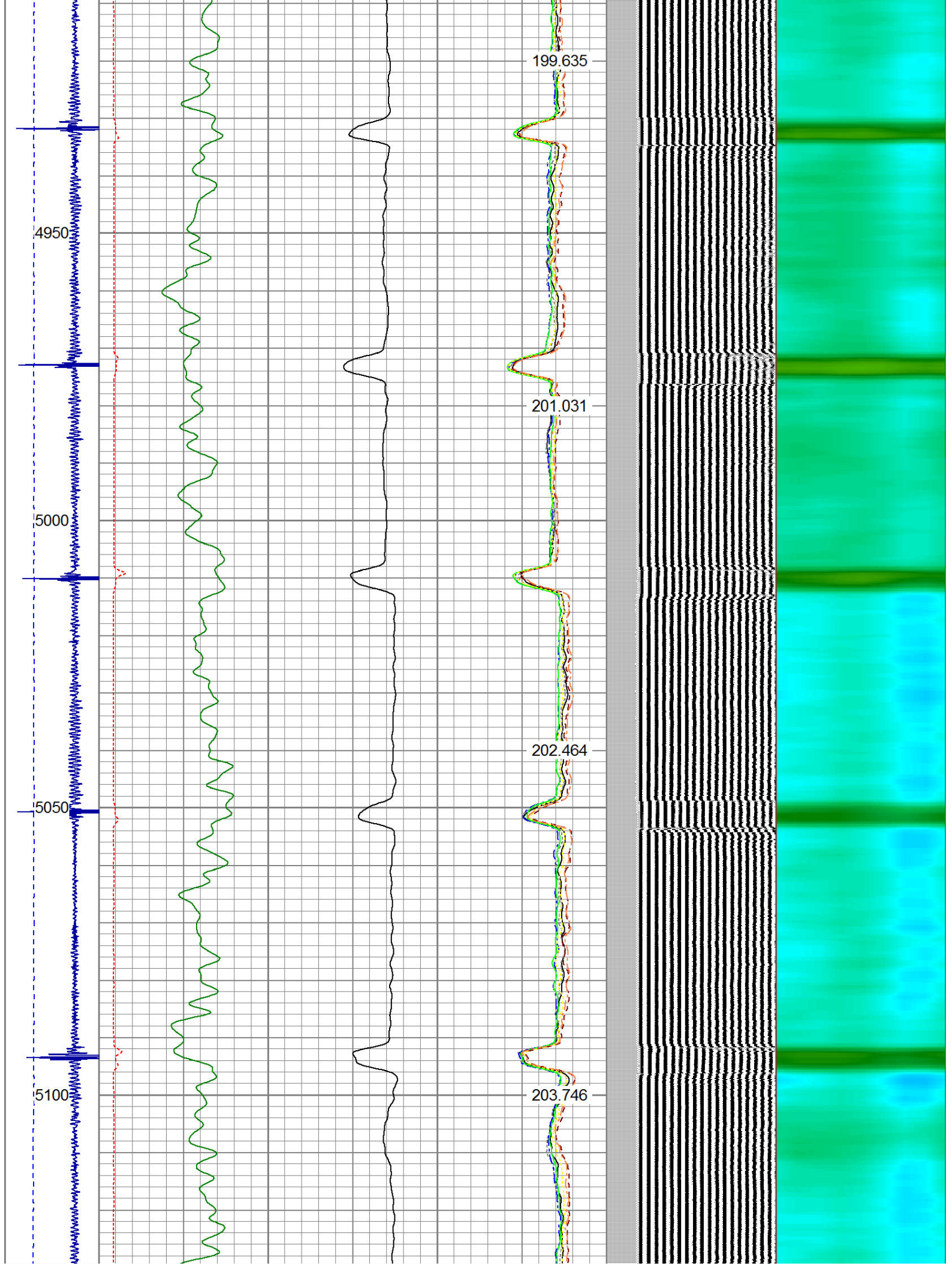




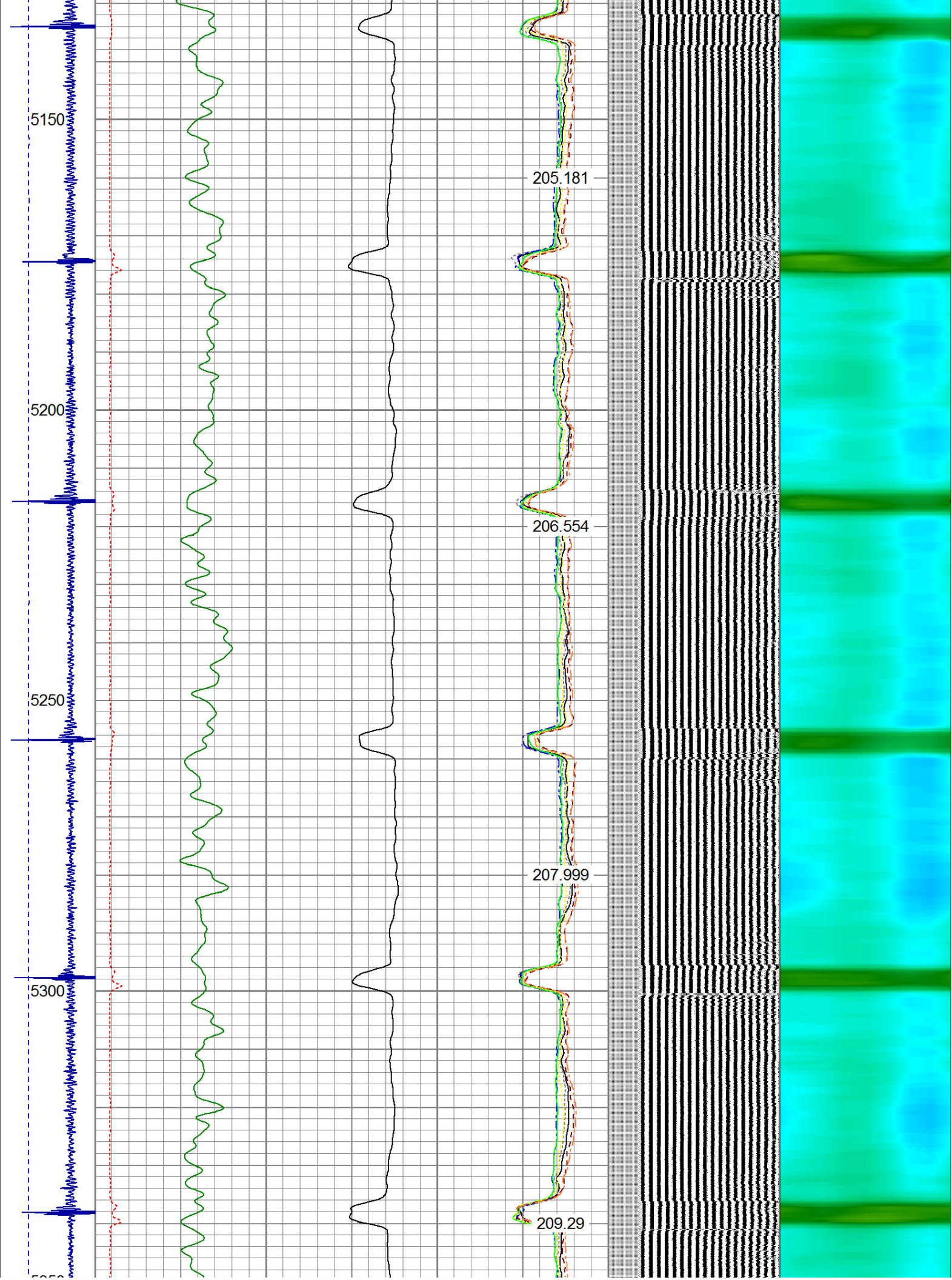




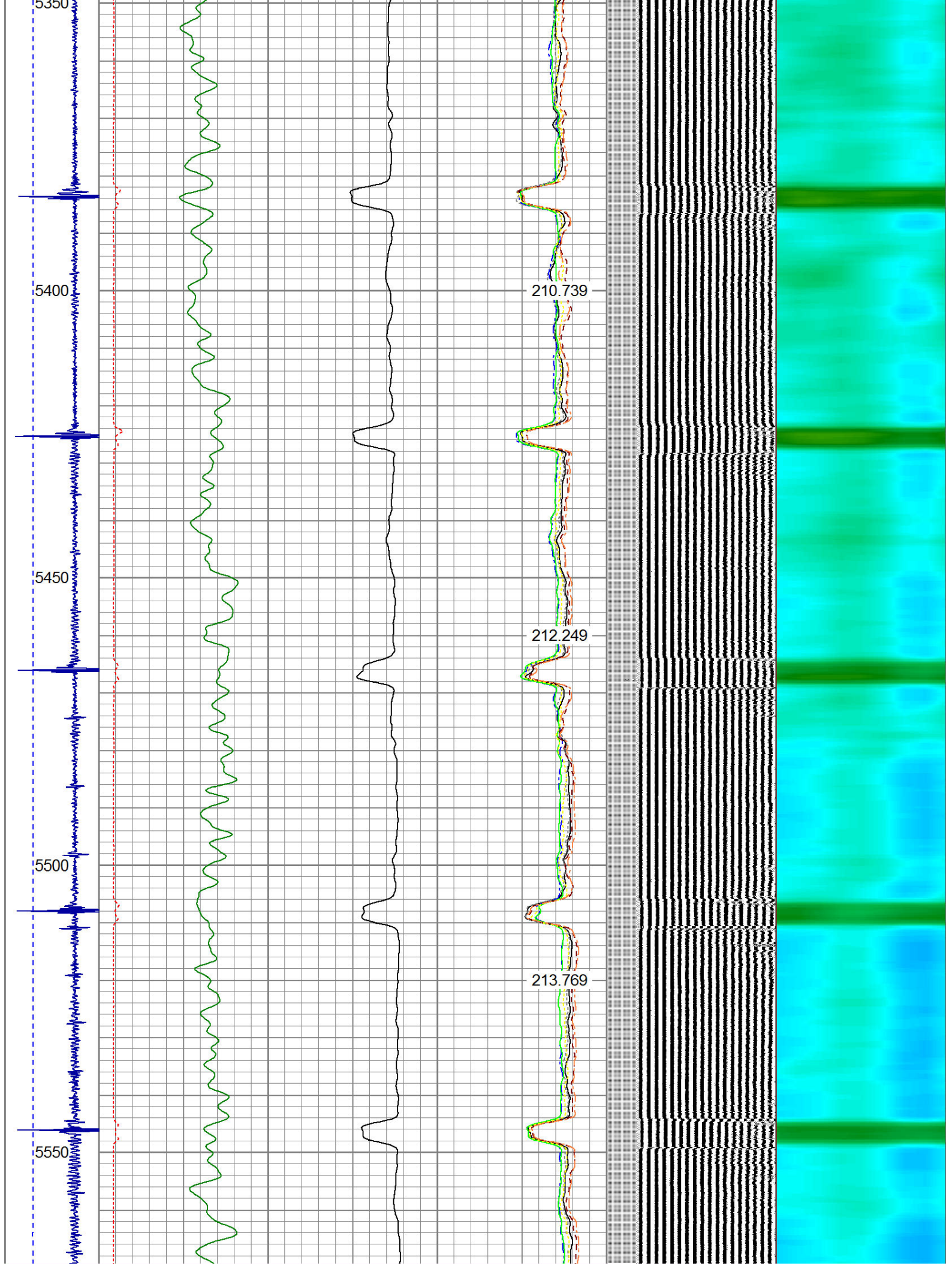




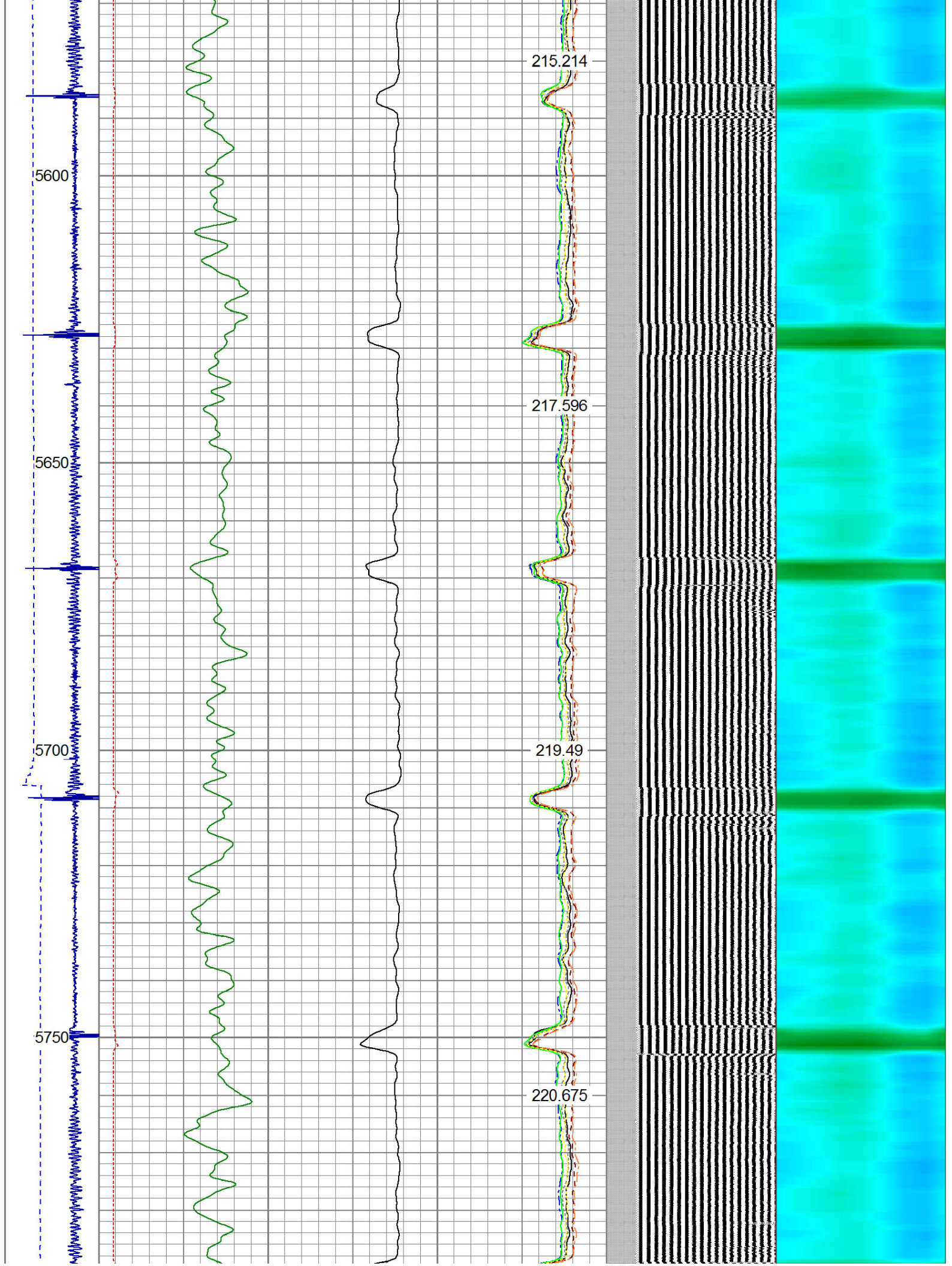




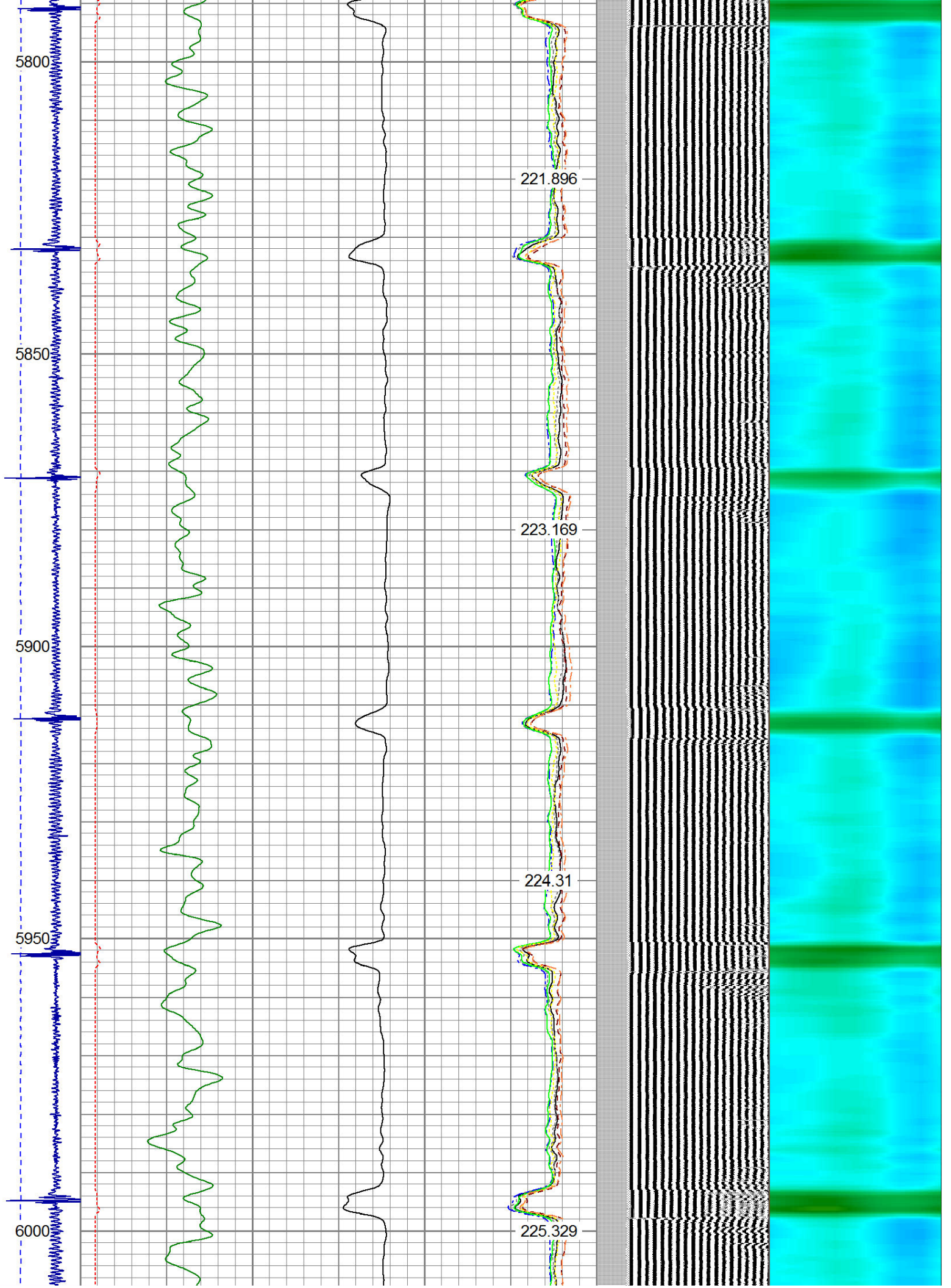




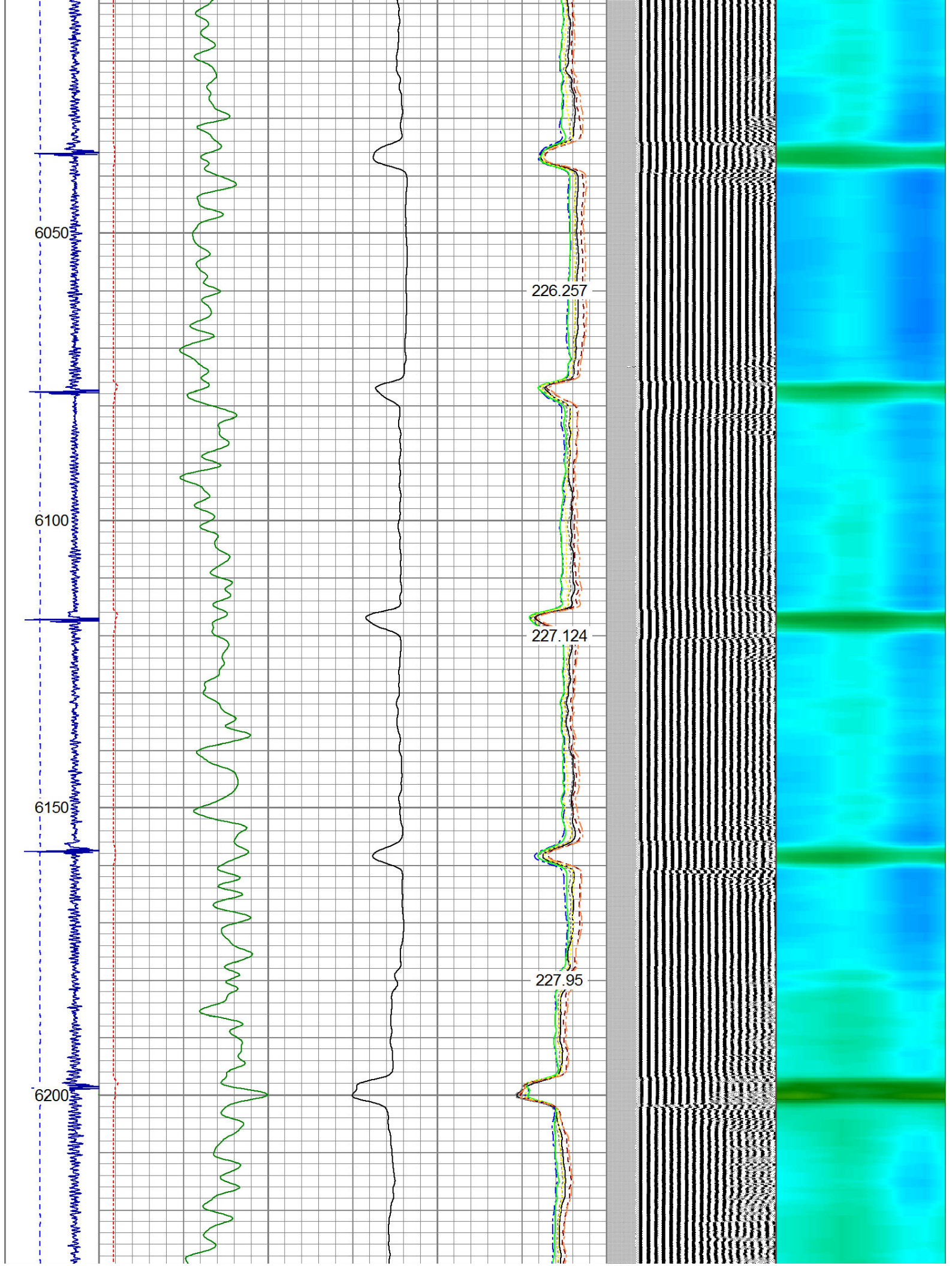




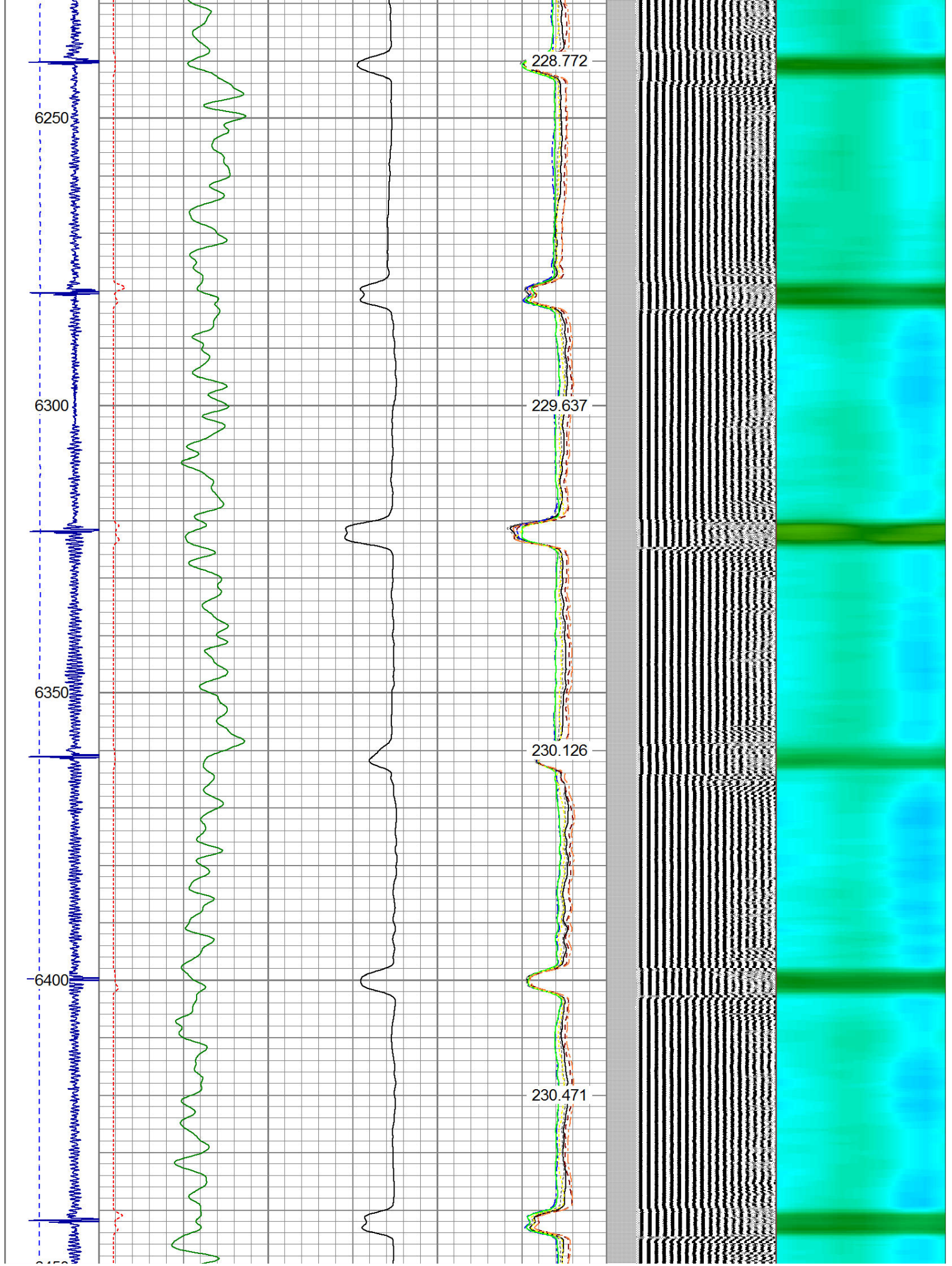




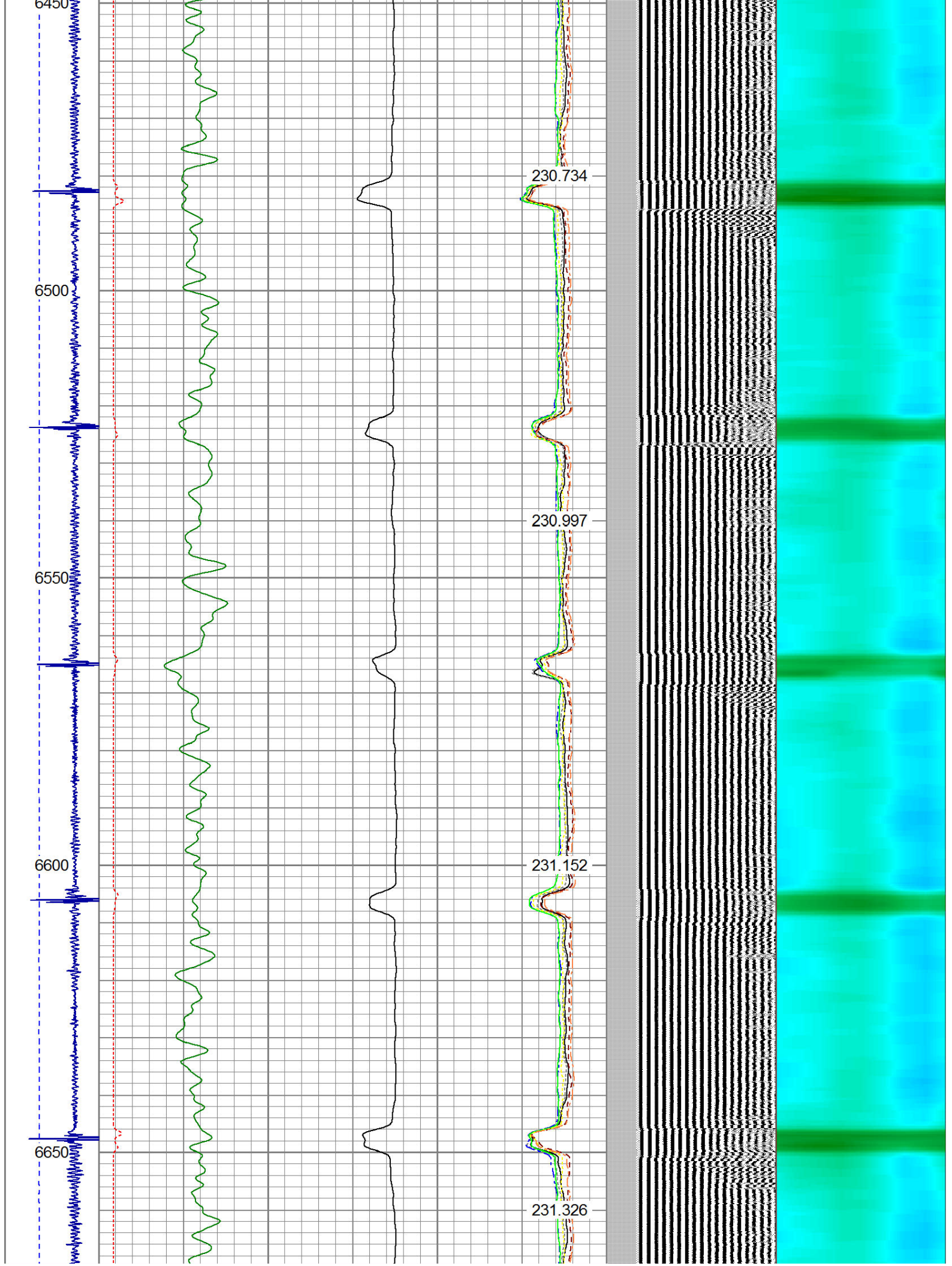




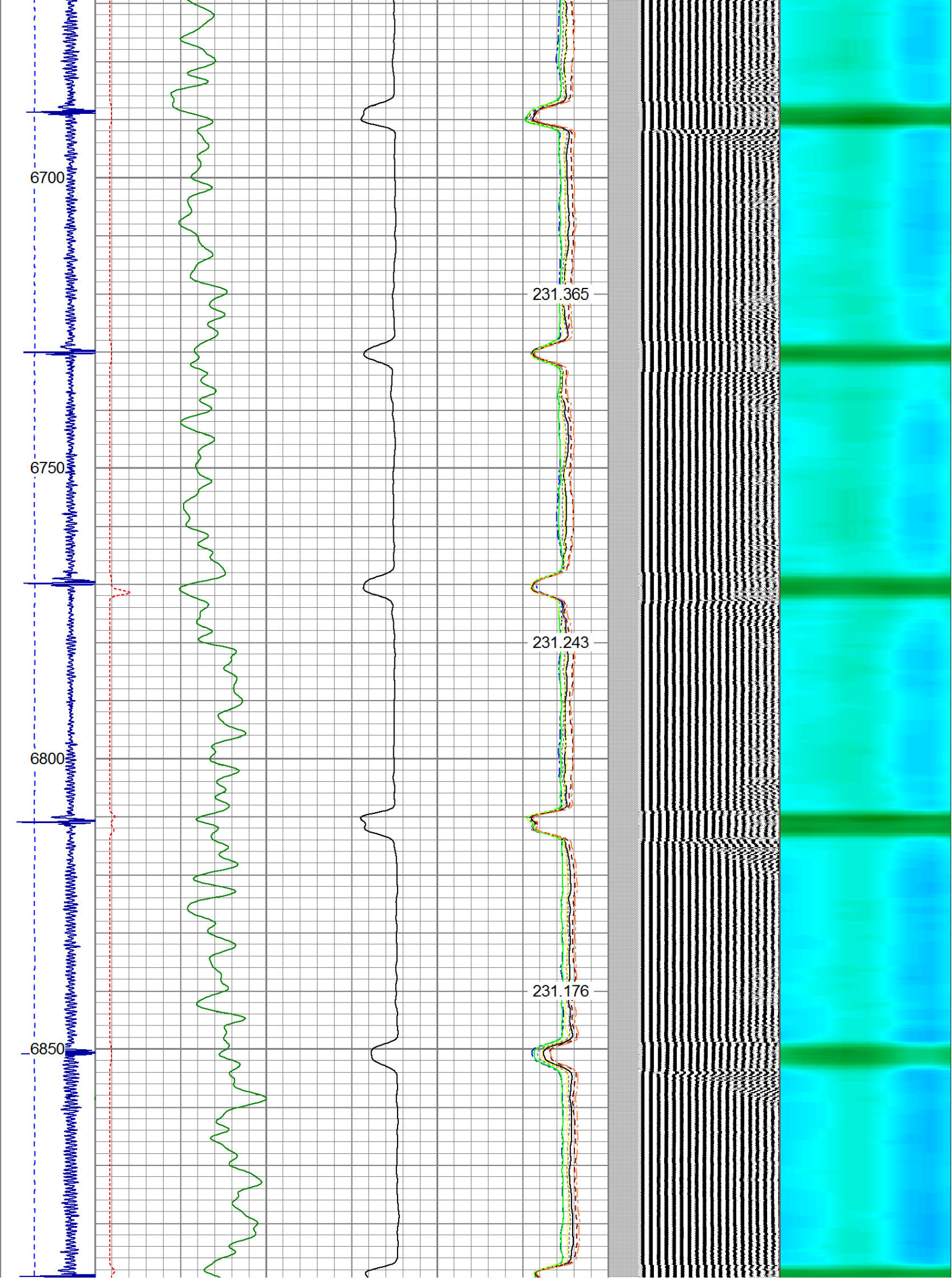




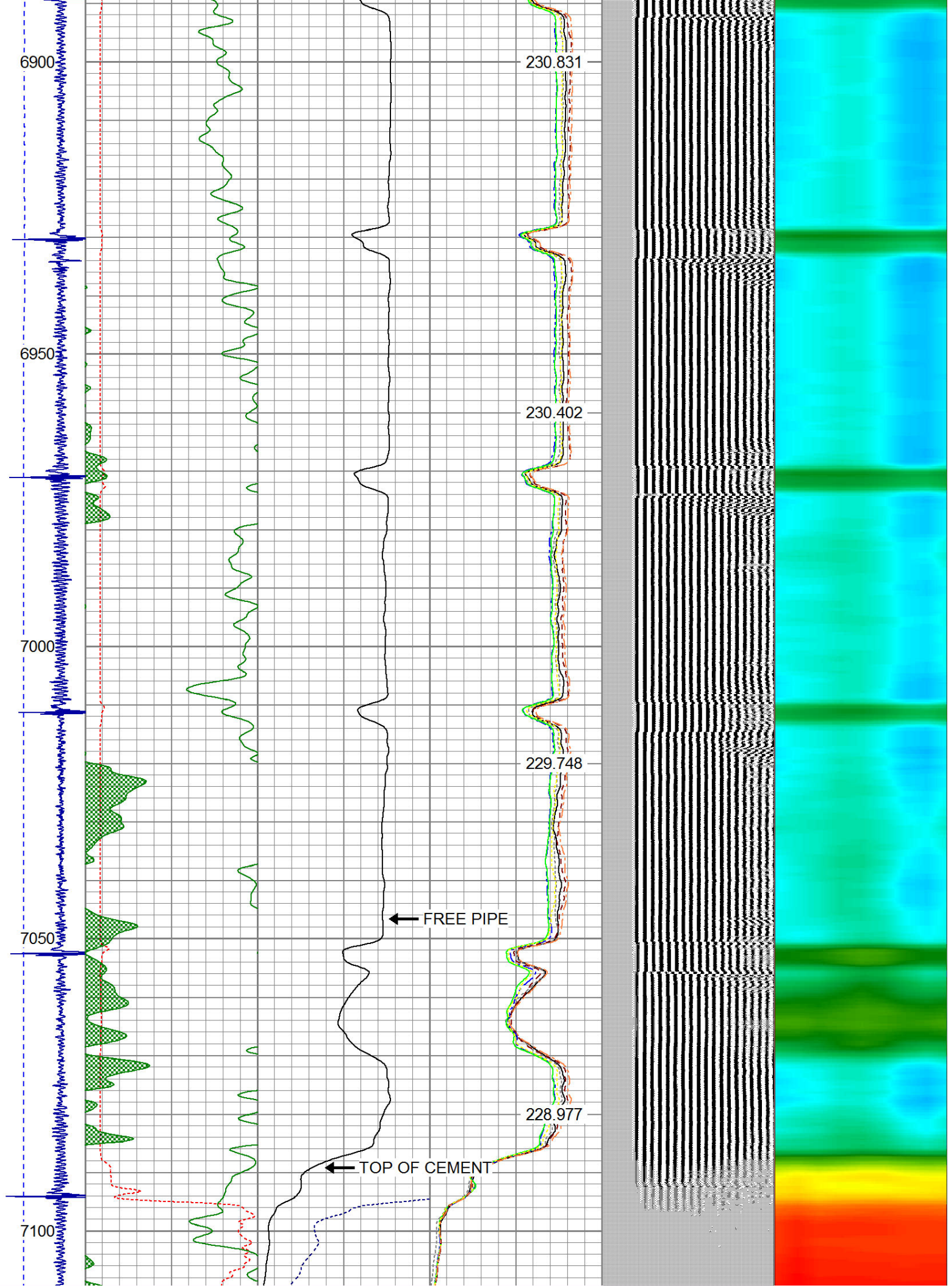




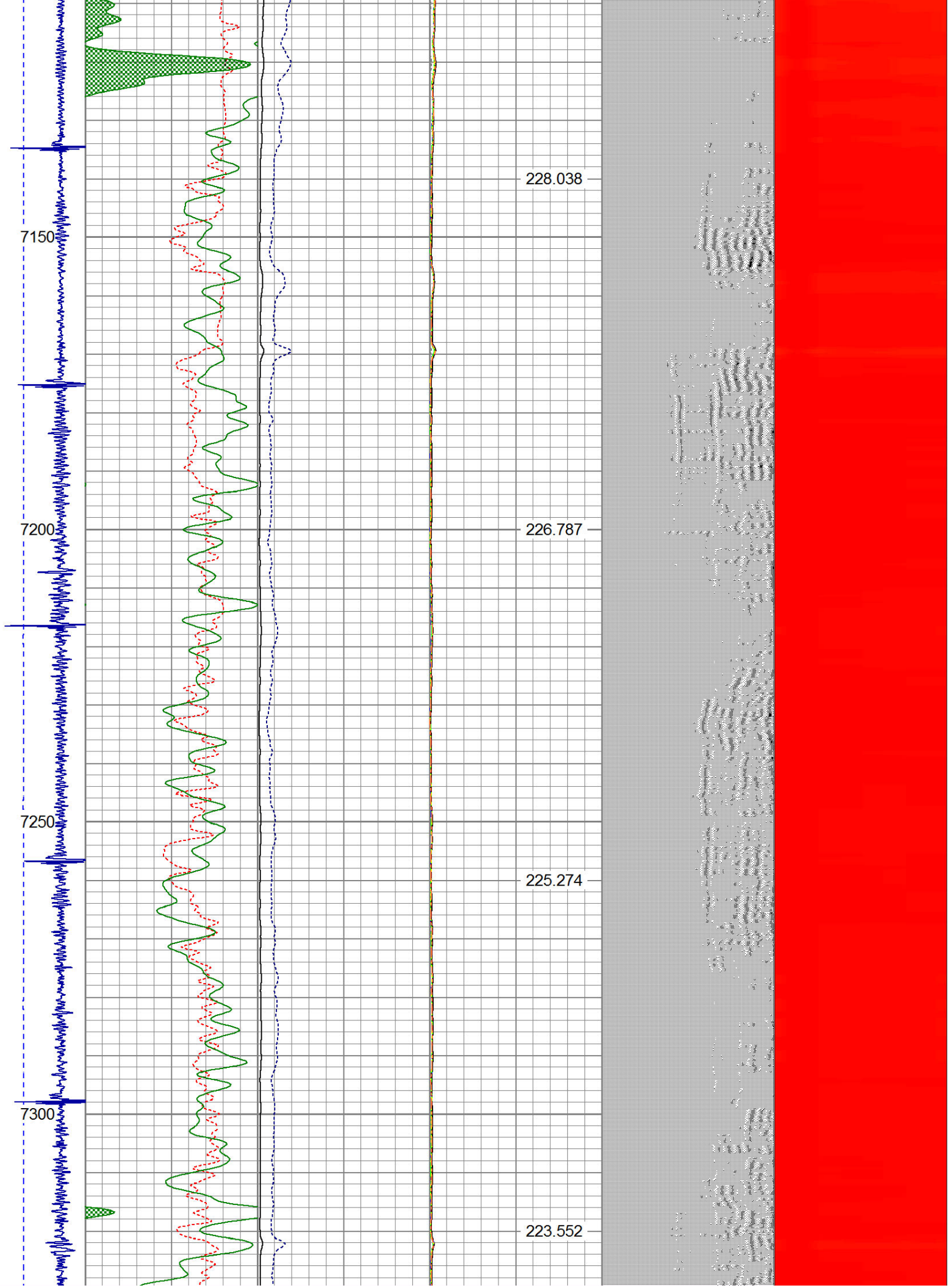




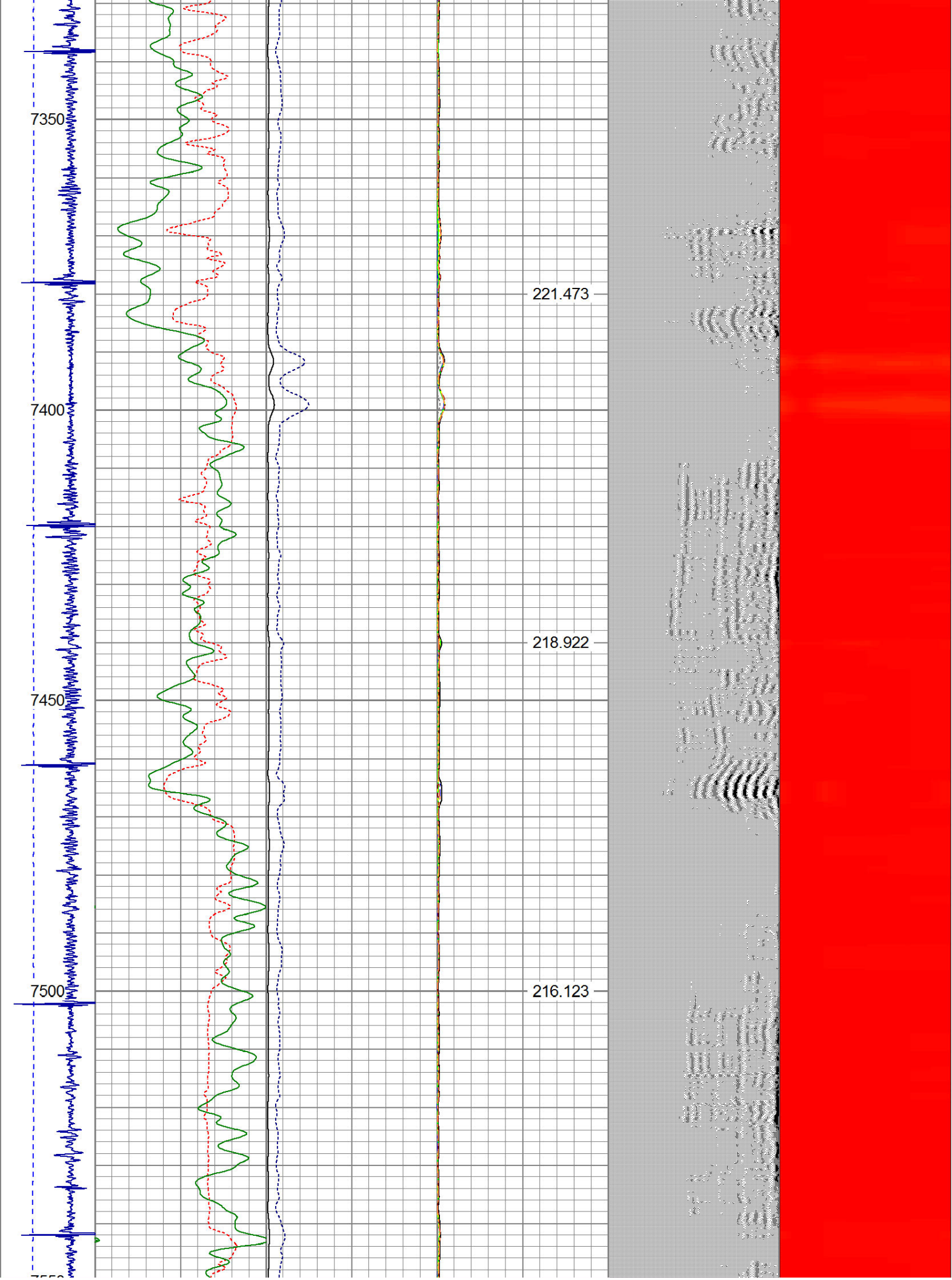




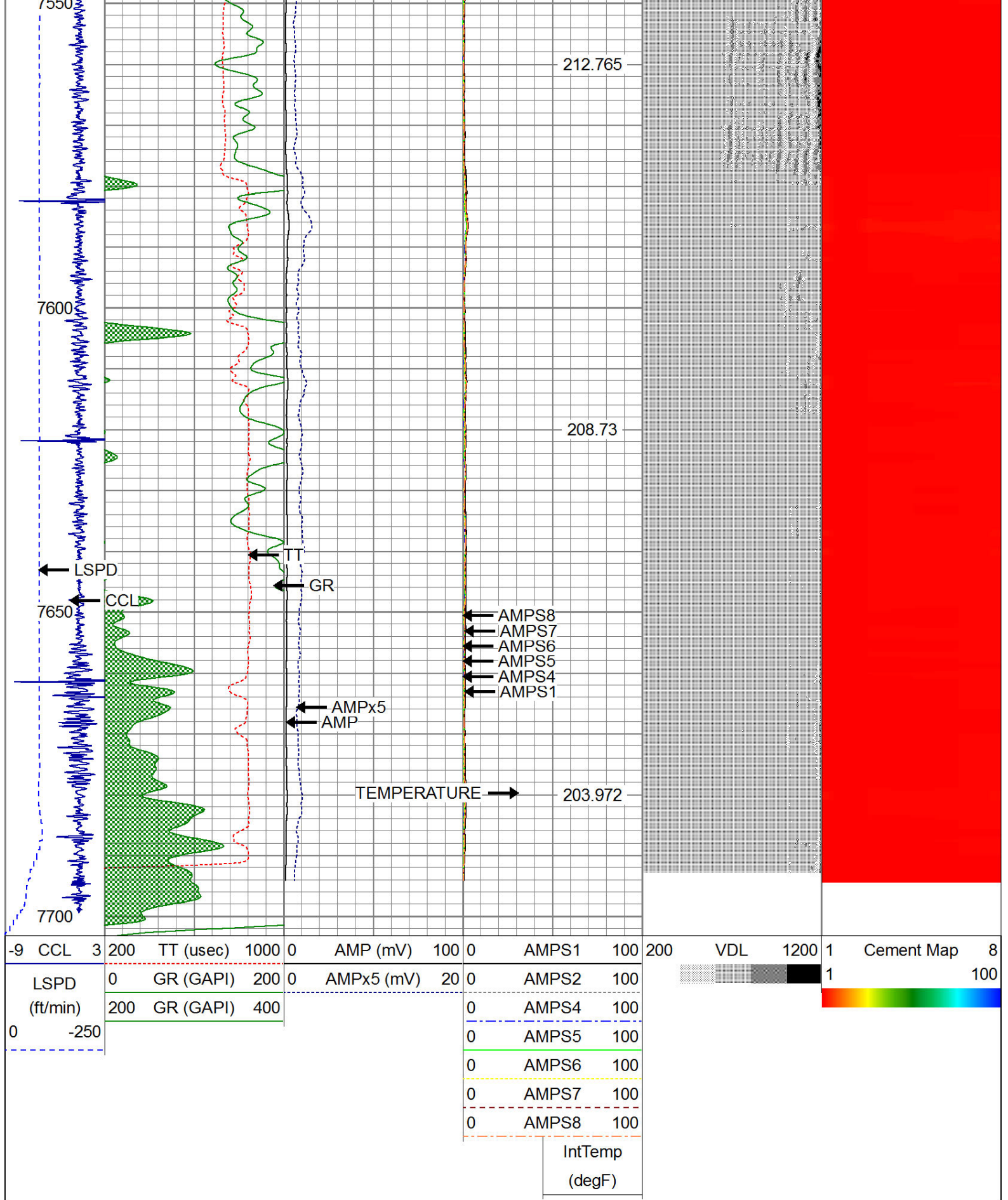








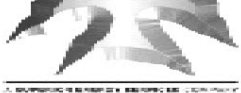




**WARRIOR**  
ENERGY SERVICES

Company Kerr McGee Oil & Gas  
Well RAITH L 15-3  
Field Wattenberg





ENERGY SERVICES

County Weld  
State CO