



Cathedral Energy Services
1949 North Pyrite Road
Casper, Wyoming 82604

145368

5":100' - MD

1/14/2015 11:15:19 AM

CATHEDRAL

Oper. Company: Encana Oil & Gas (USA) Inc.

Country: U.S.A.

State / Province: Colorado

County / Parish: Weld

Started: 10/18/2014 04:00 AM

API/UWI: 05 123 37620

Field: Wattenberg (Codell)

Well: Drieth 4E-6H-I368

Rig: Helmerich & Payne 522

Ended: 10/23/2014 07:00 PM

Gamma Ray
Section Plane: 270
Magnetic North: 8.55
Gamma Attenuation Factor: 2.81
Gamma Averaging: 7%

Personnel

Day Hand: J. Nichols

Night Hand: T. Kaspch

Comp. Emp: Kirby Burchett

Maximum Temperature: 214°F

Location

Latitude: 40.254110

Longitude: -105.038550

Elev. GL: 5110

Elev. DF:

Elev. KB: 5140

Log and Survey Depths Relative to Kelly Bushing (KB) Depth

Hole Data

Size	From	To
12-1/4	0	880
8-3/4	880	7574
6-1/8	7574	11678

Casing Data

Size	From	To
9-5/8	0	869
7	0	7573
4-1/2	0	11673

Bit Sizes

Size	From	To
12-1/4	0	880
8-3/4	880	7574
6-1/8	7574	11678

Mud Data

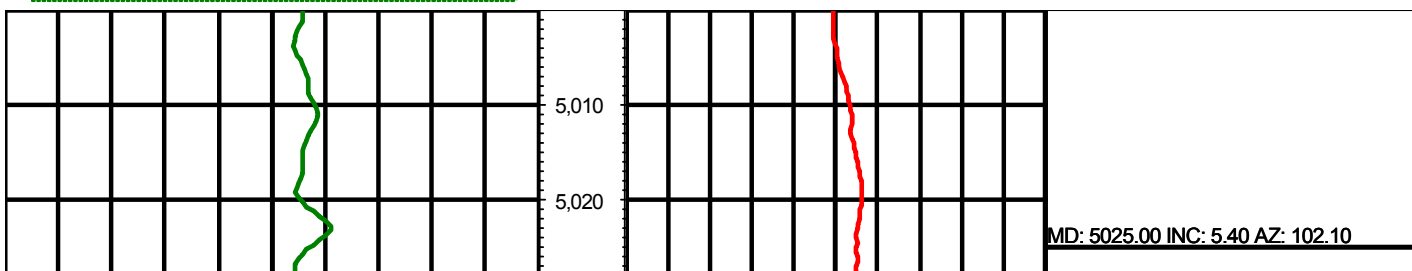
Type	Weight	Density	Viscosity	Rm	Rmf	Rmc	From	To
------	--------	---------	-----------	----	-----	-----	------	----

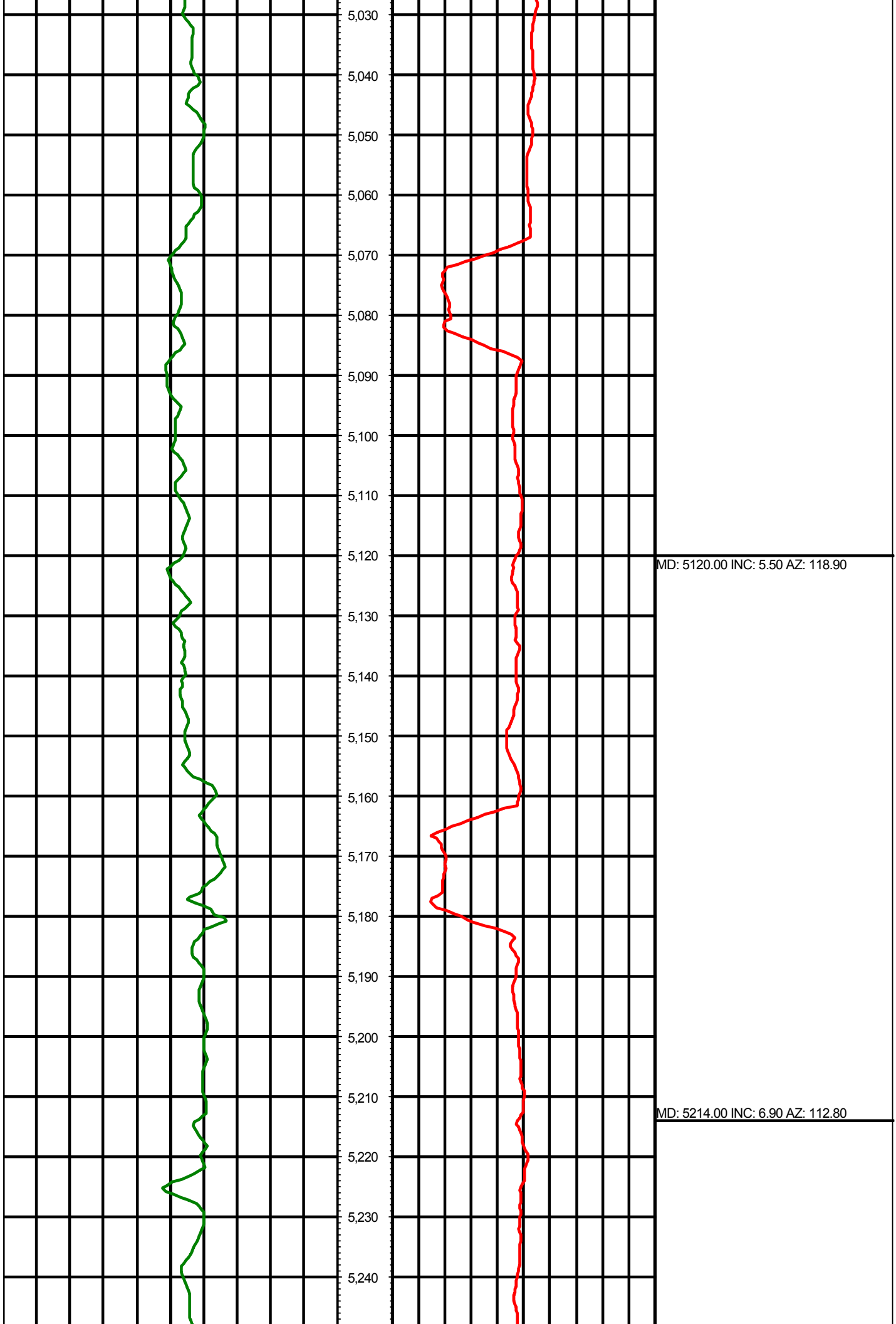
Tool Run Data

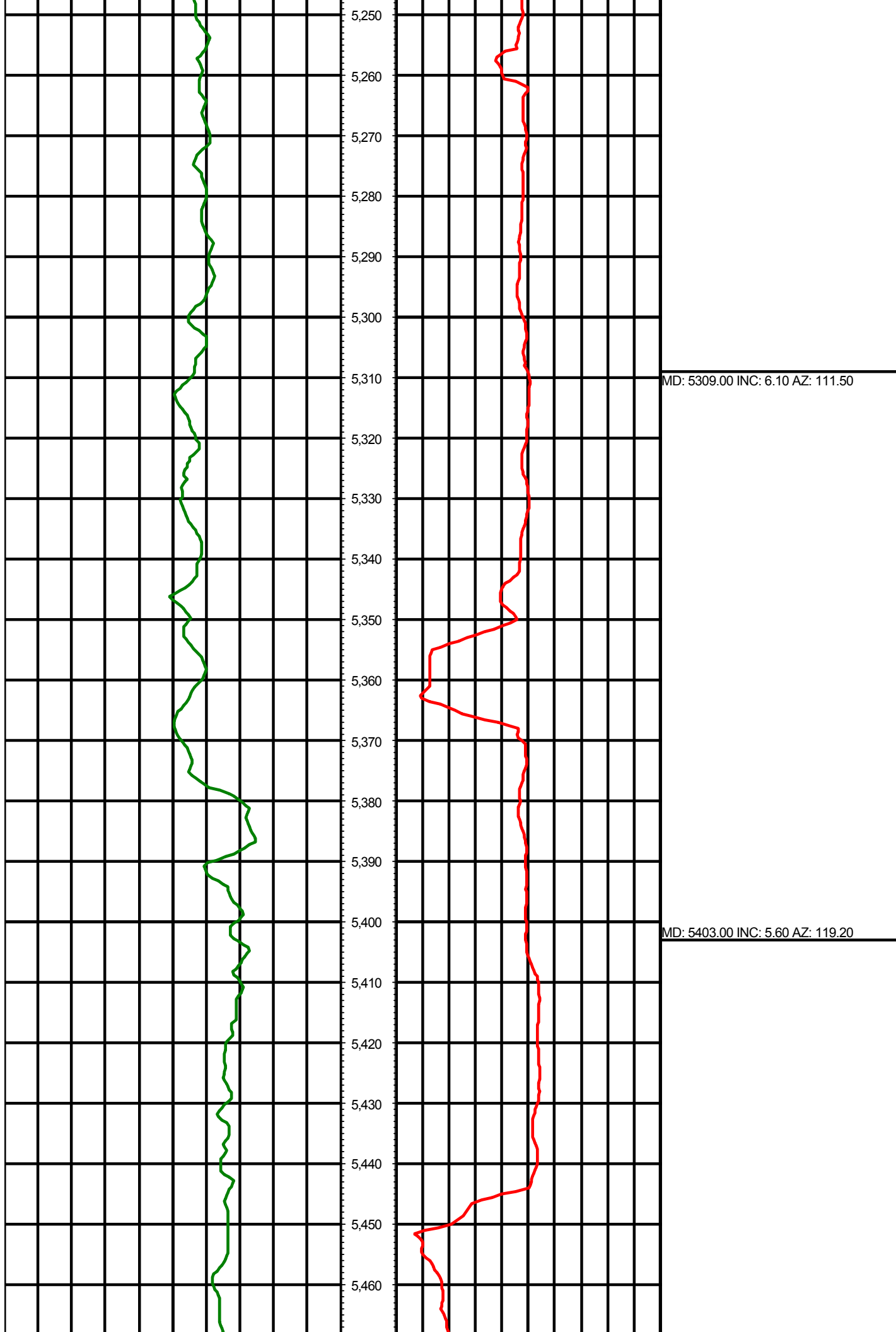
Serial Number	Gamma Offset	Resist. Offset	Start Time	Start Depth	End Time	End Depth
	0	0	10/24/2014 8:17:18 AM	0	10/24/2014 8:17:18 AM	0

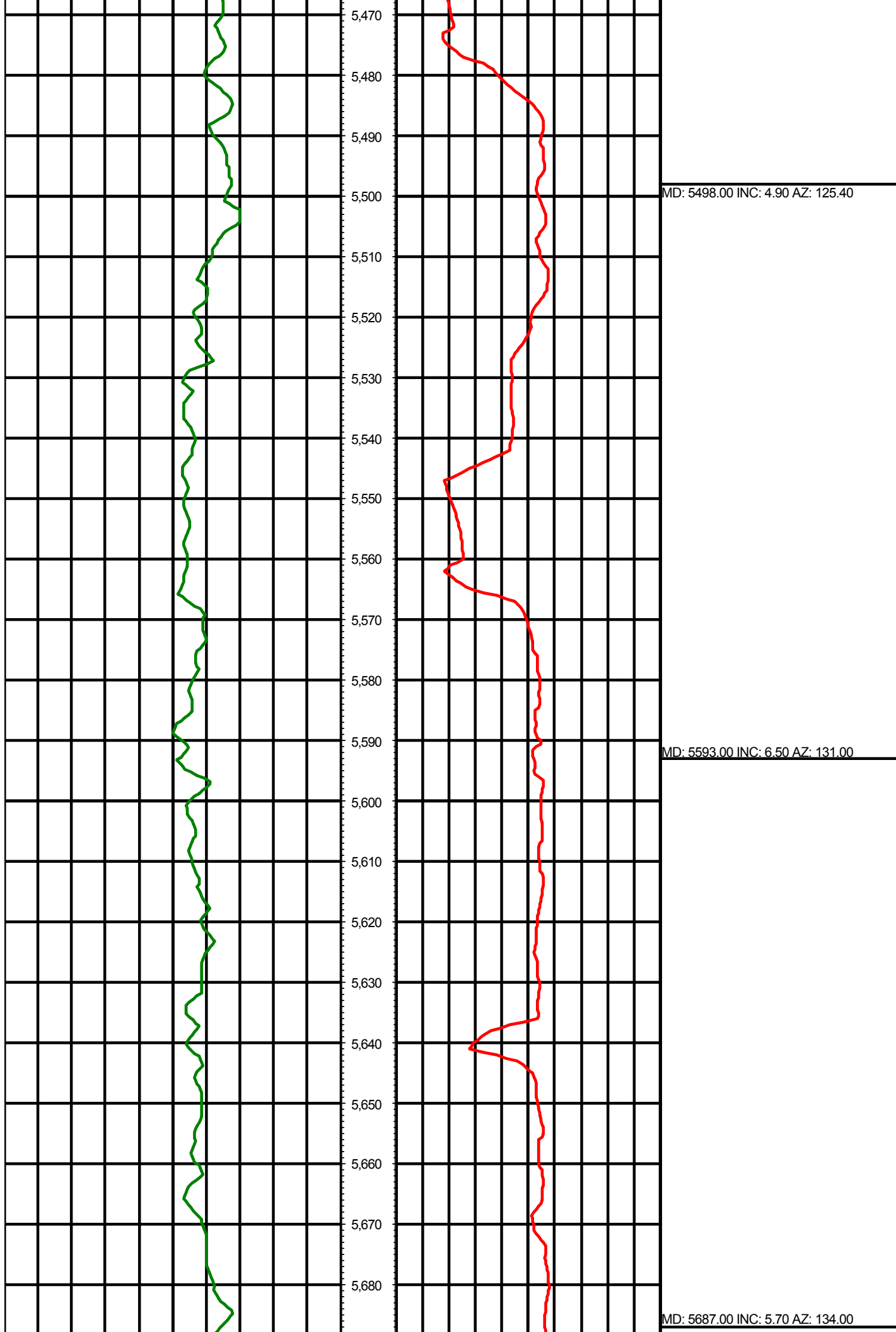
All interpretations are opinions based on inferences from electrical or other measurements and we cannot and do not guarantee the accuracy or correctness of any interpretation, and we shall not except in the case of gross or willful negligence on our part, be liable or responsible for any loss, cost damages or expenses incurred or sustained by anyone resulting from an interpretation made by any of our officers, agents, or employees.

0.00 Gamma Ray (API) 150.00 MD 0.00 ROP (FT/HR) 600.00 Surveys (MD/INC/AZ)
150.00 2 300.00 FT





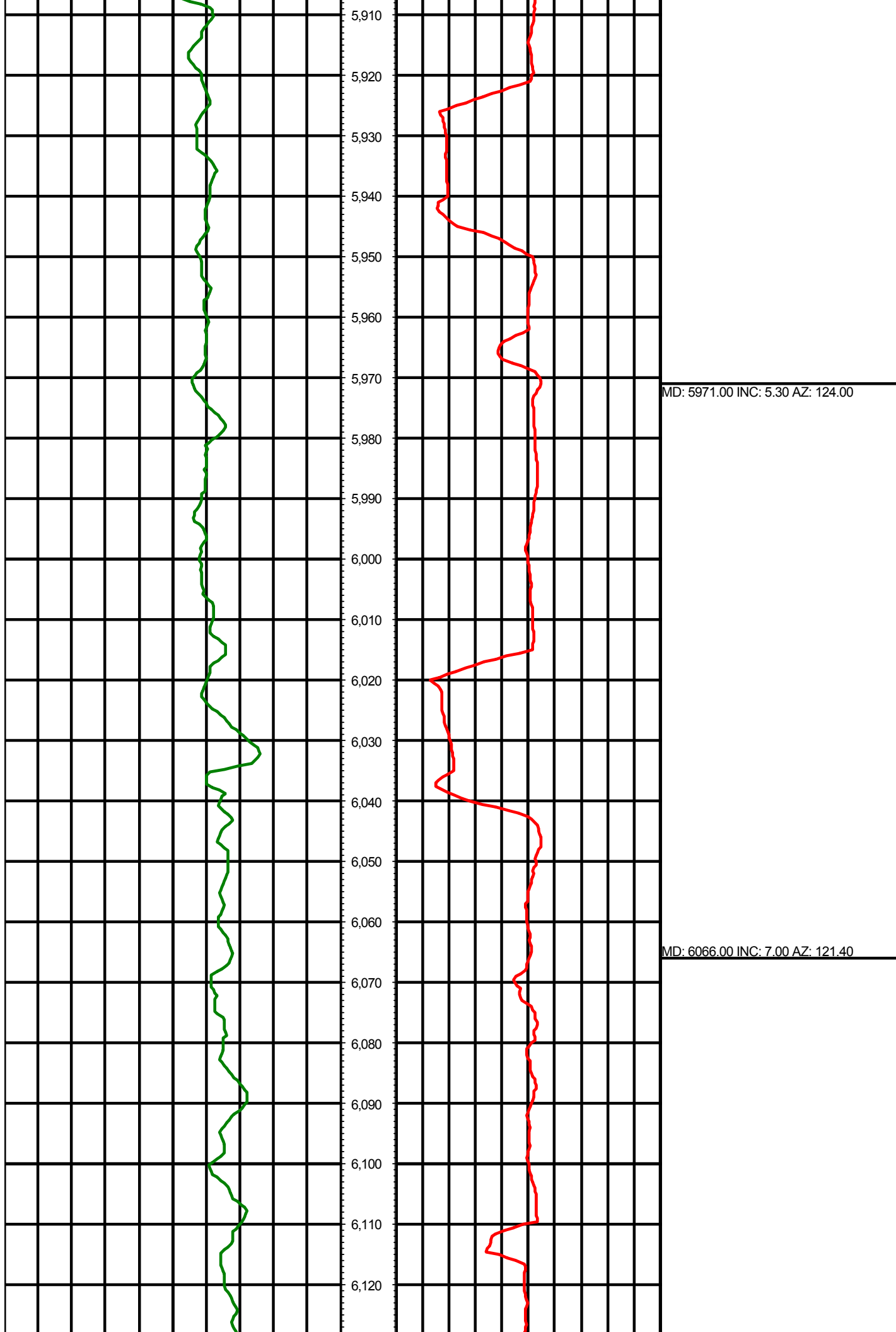


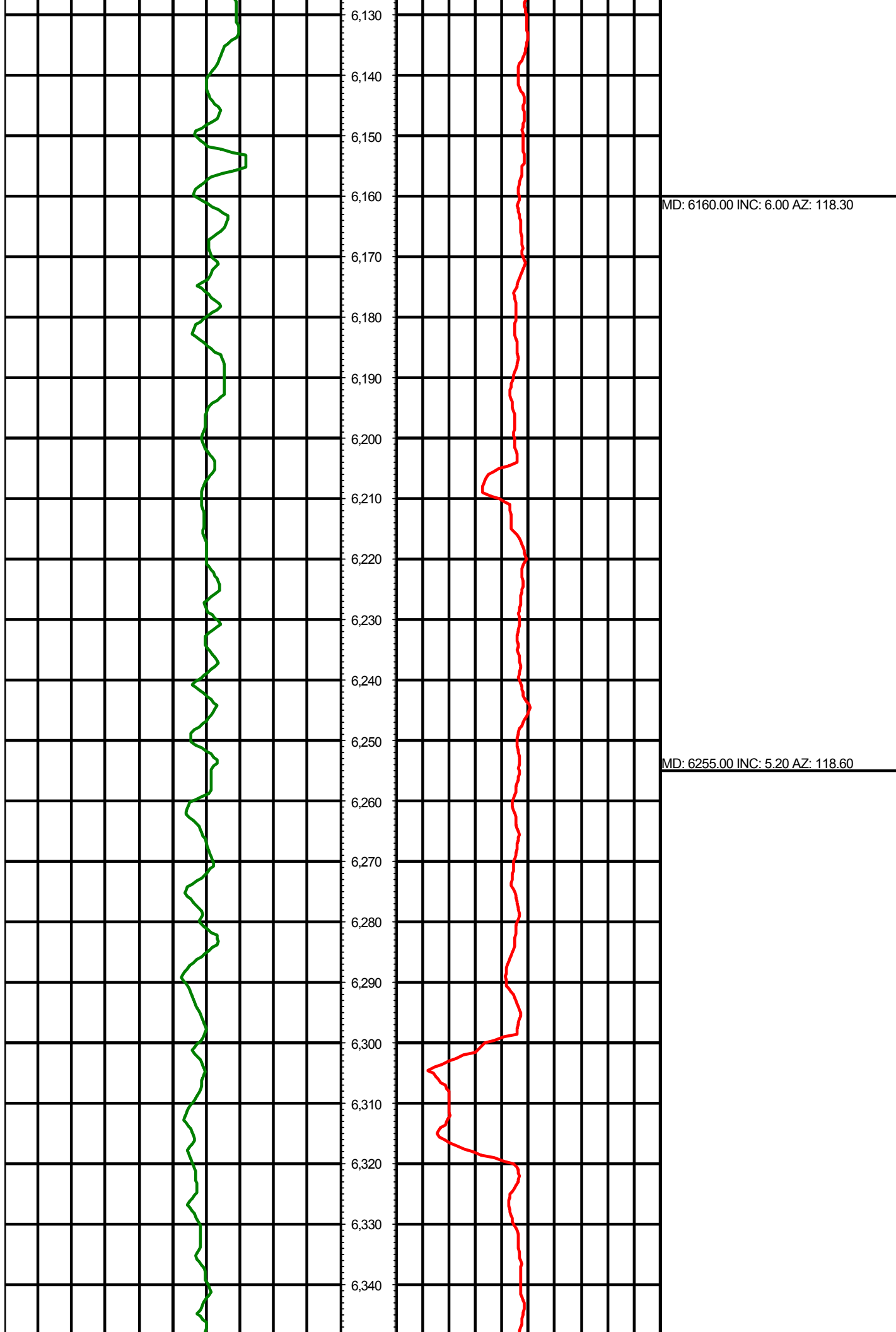


MD: 5687.00 INC: 5.70 AZ: 134.00

MD: 5782.00 INC: 5.30 AZ: 135.80

MD: 5876.00 INC: 5.10 AZ: 135.00

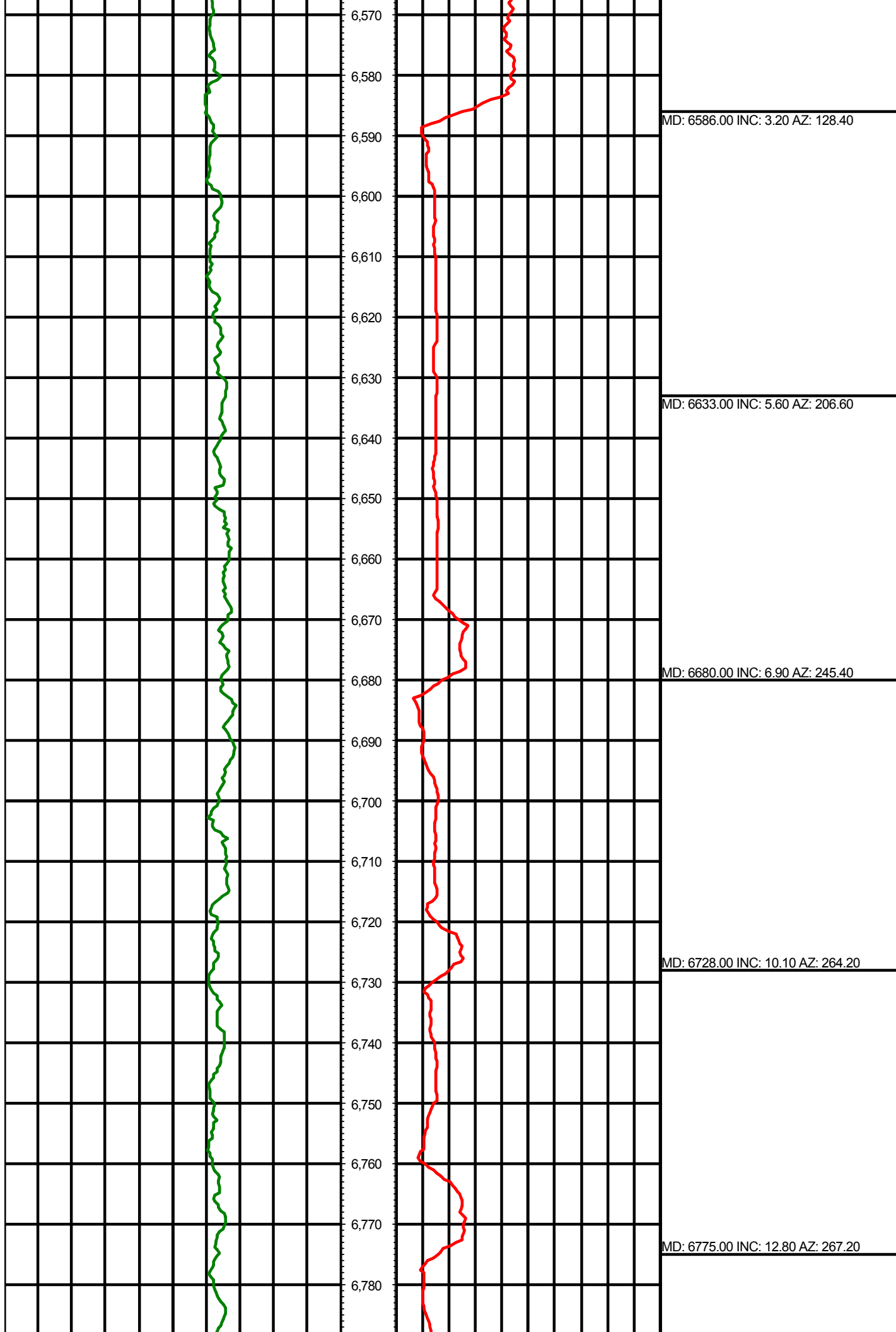


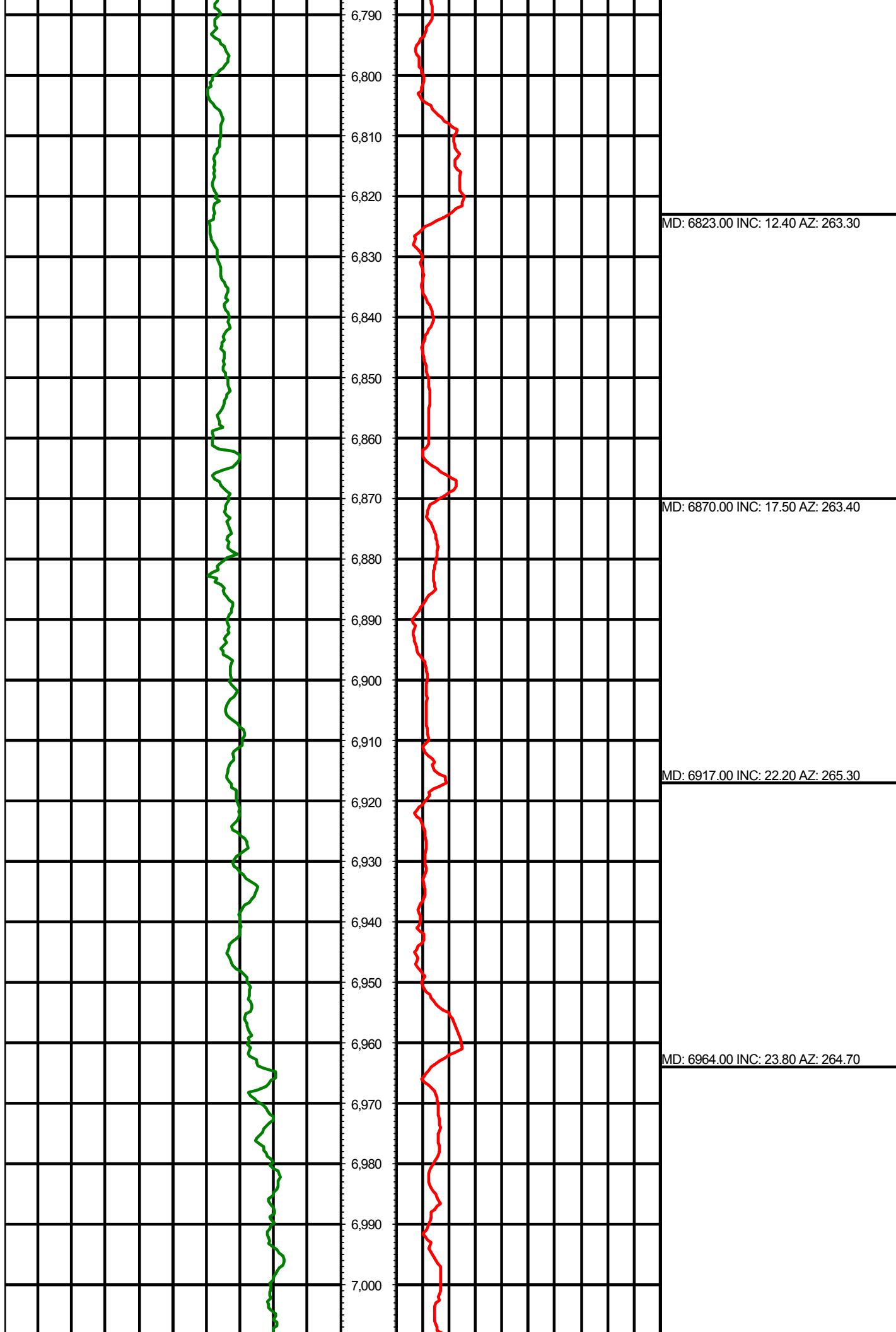


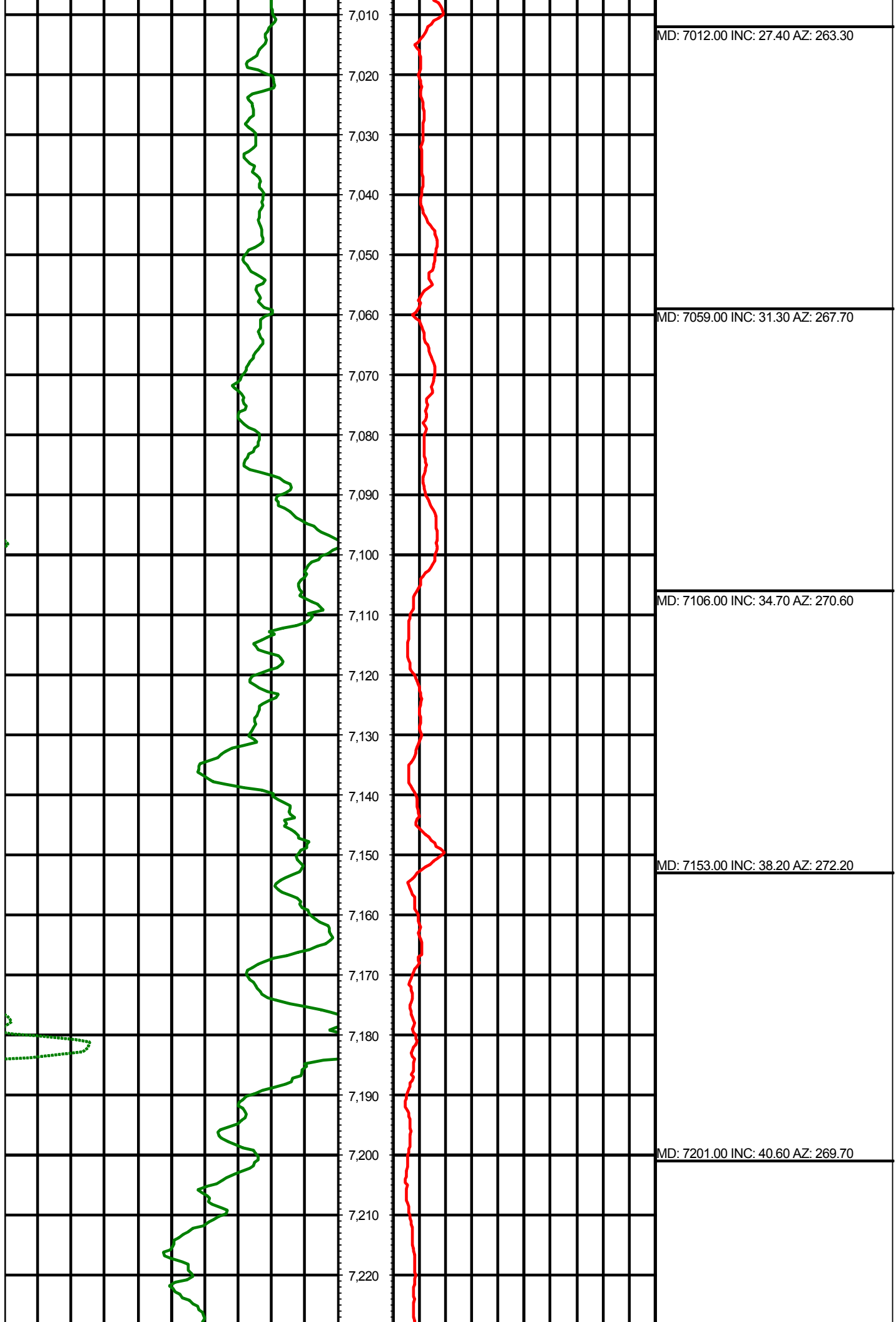
MD: 6350.00 INC: 5.80 AZ: 110.80

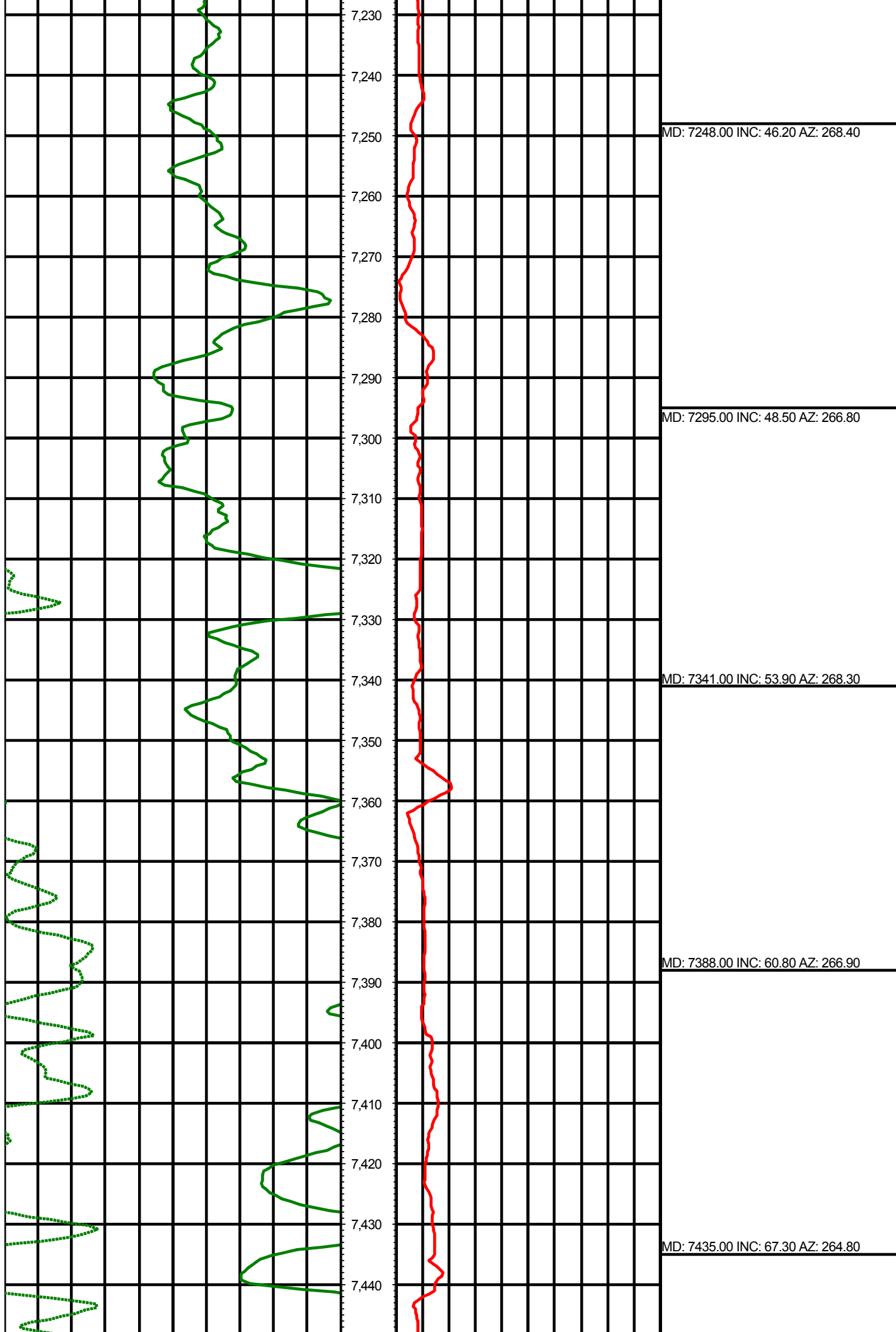
MD: 6444.00 INC: 5.10 AZ: 109.00

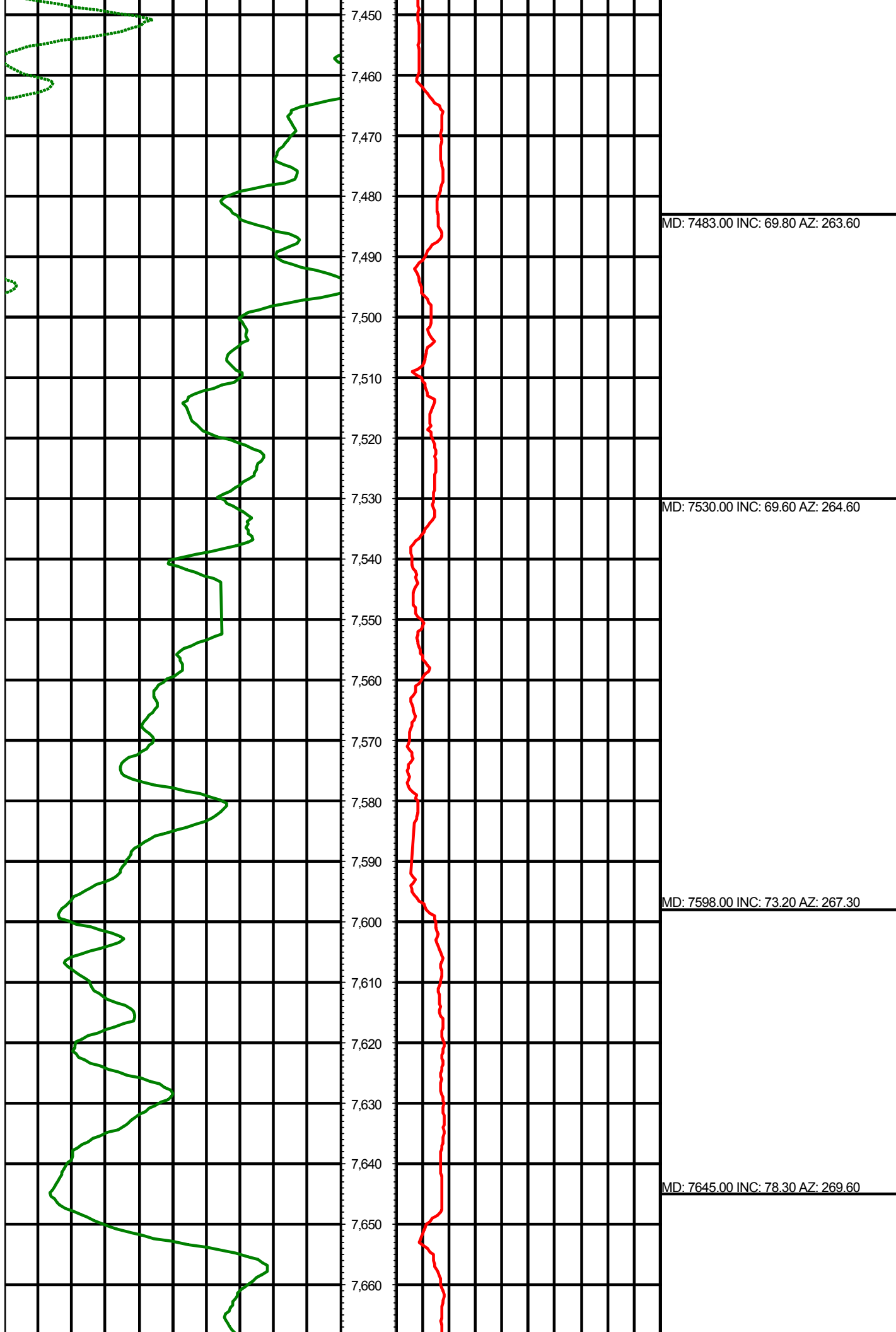
MD: 6539.00 INC: 4.10 AZ: 109.80

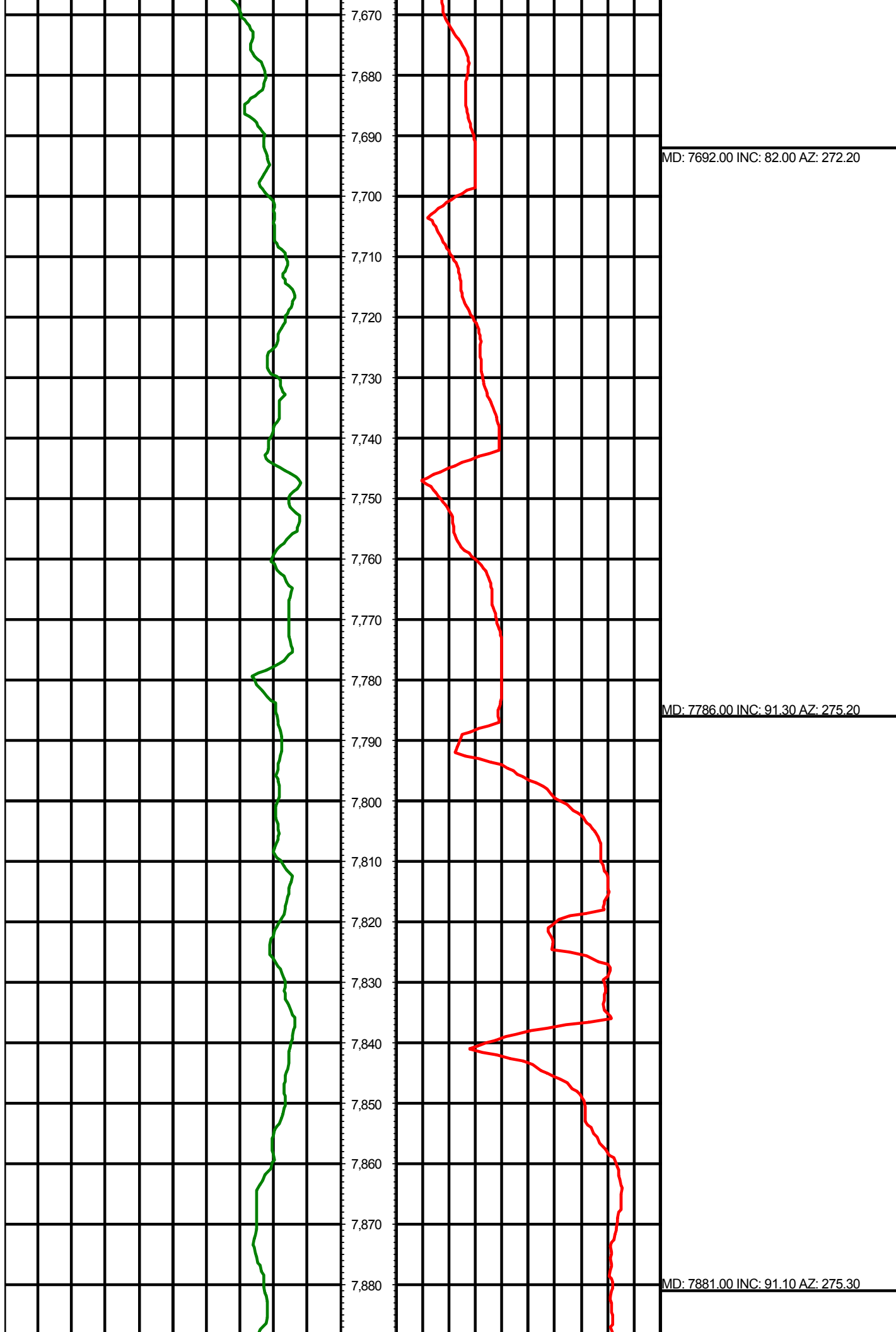


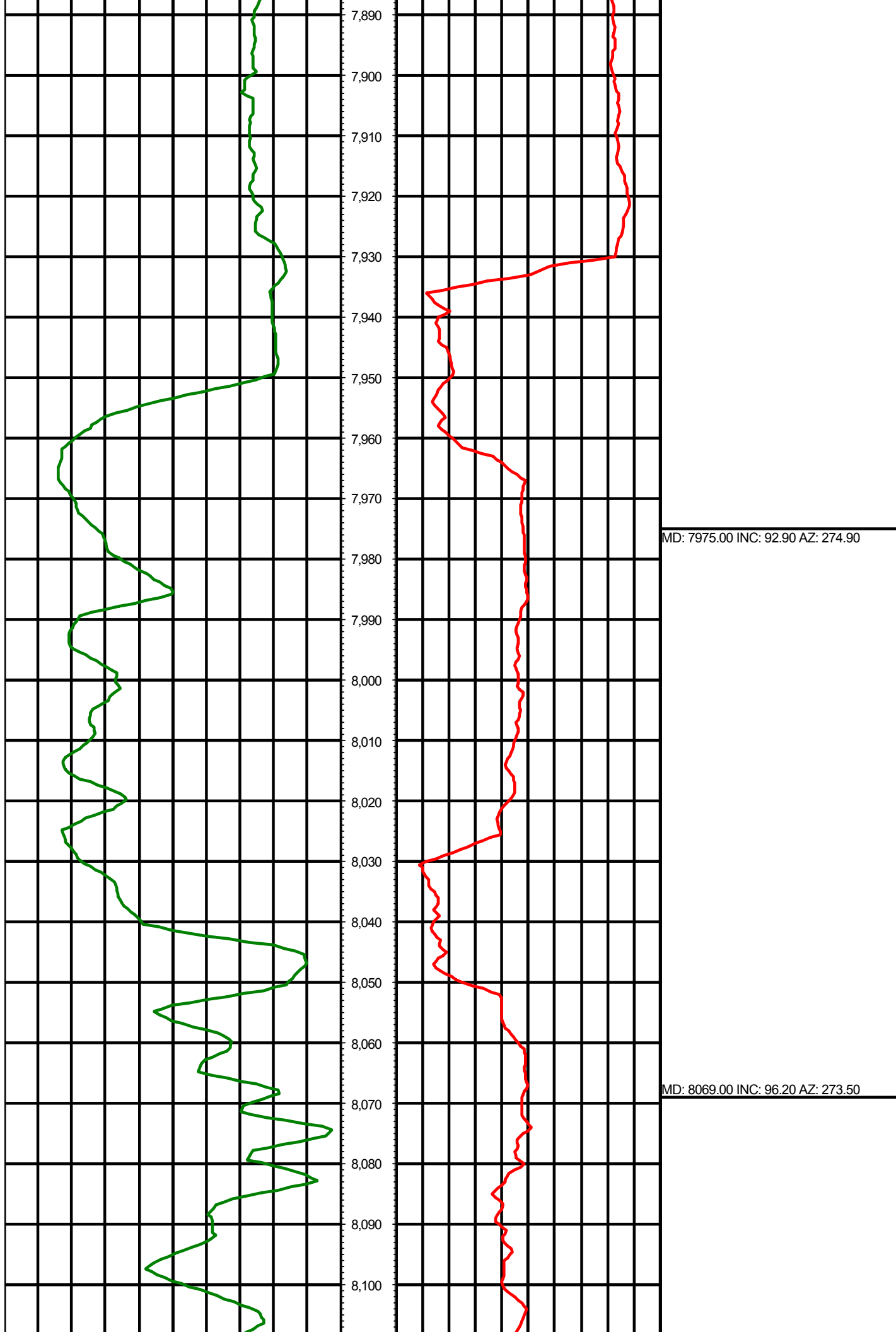


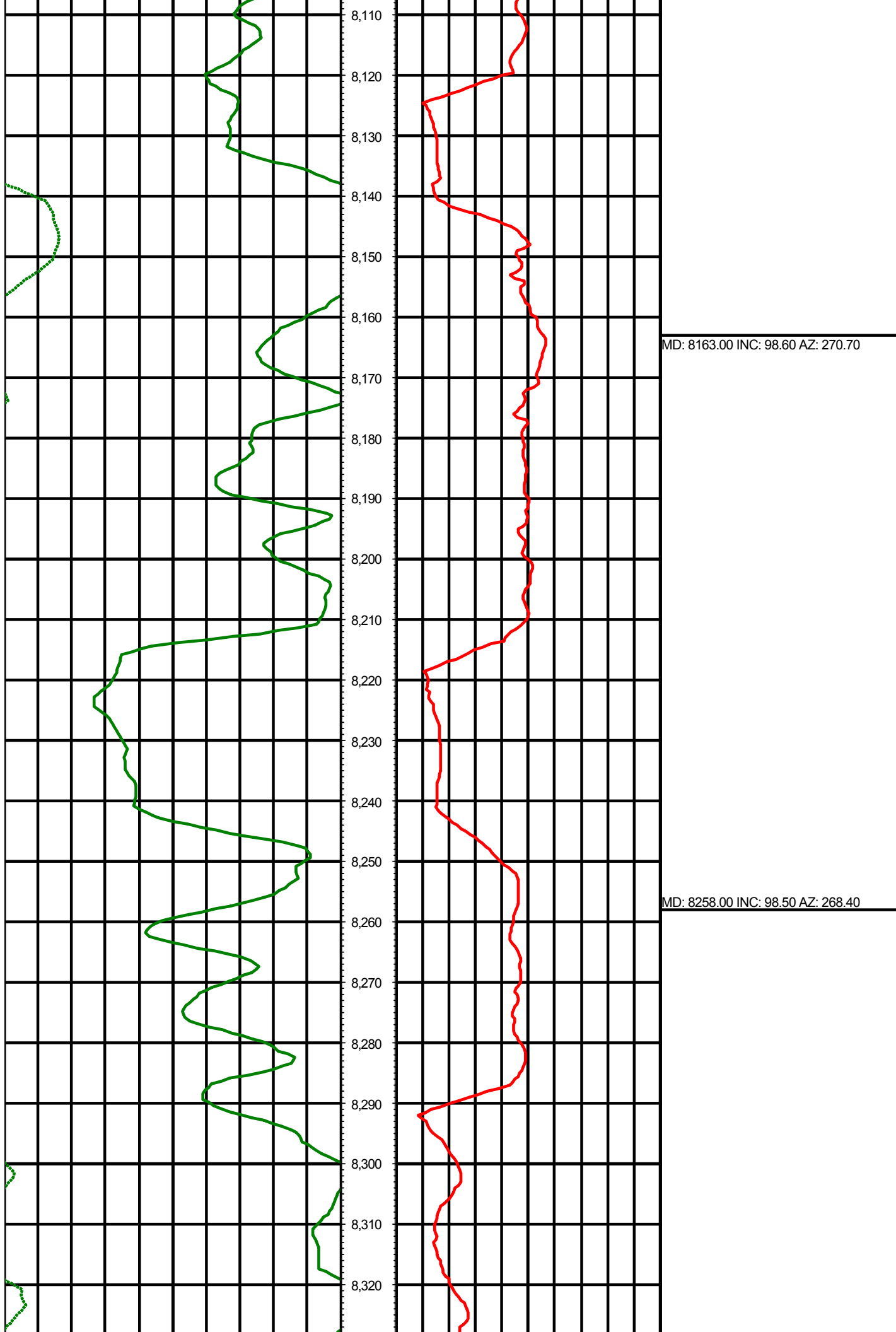


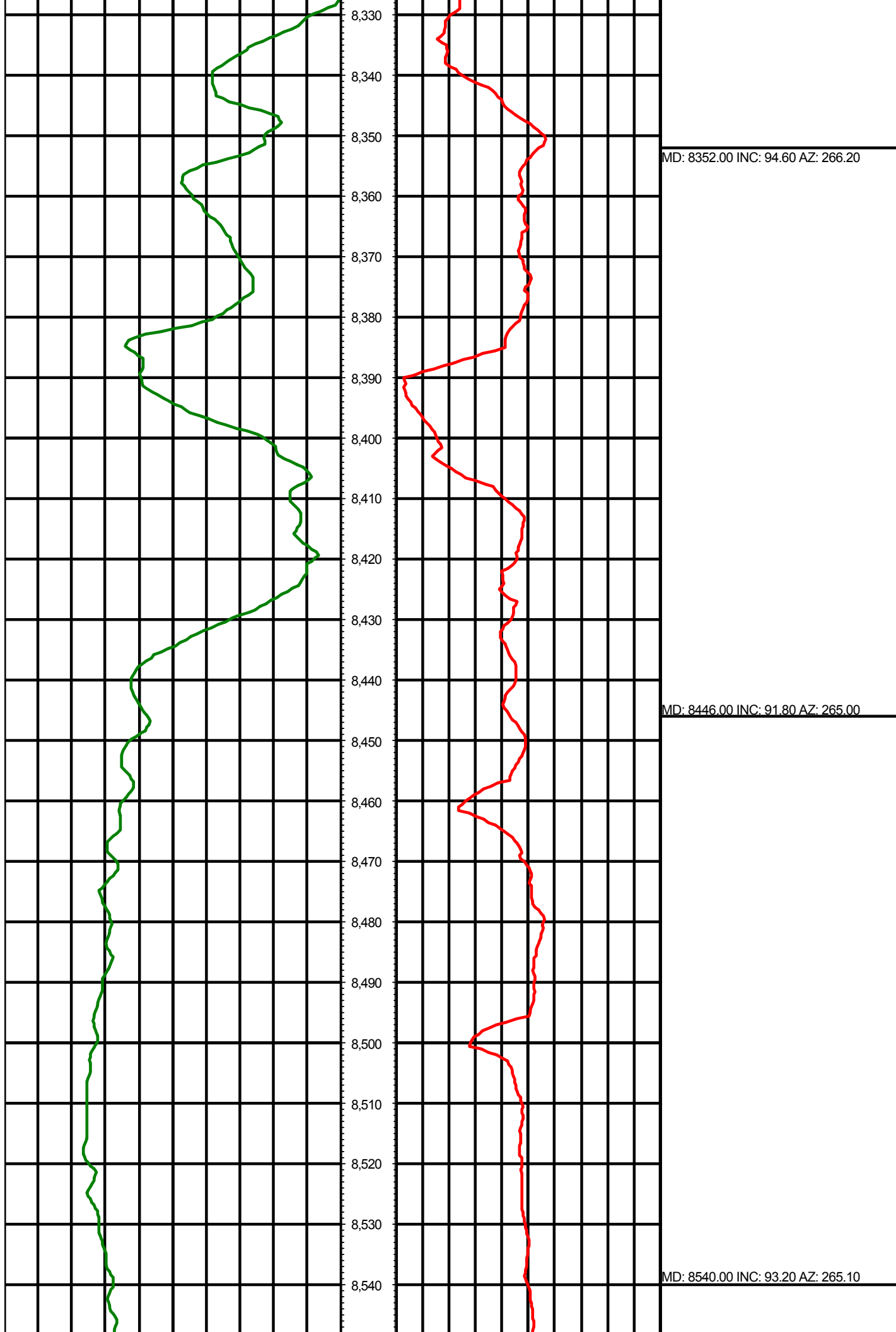


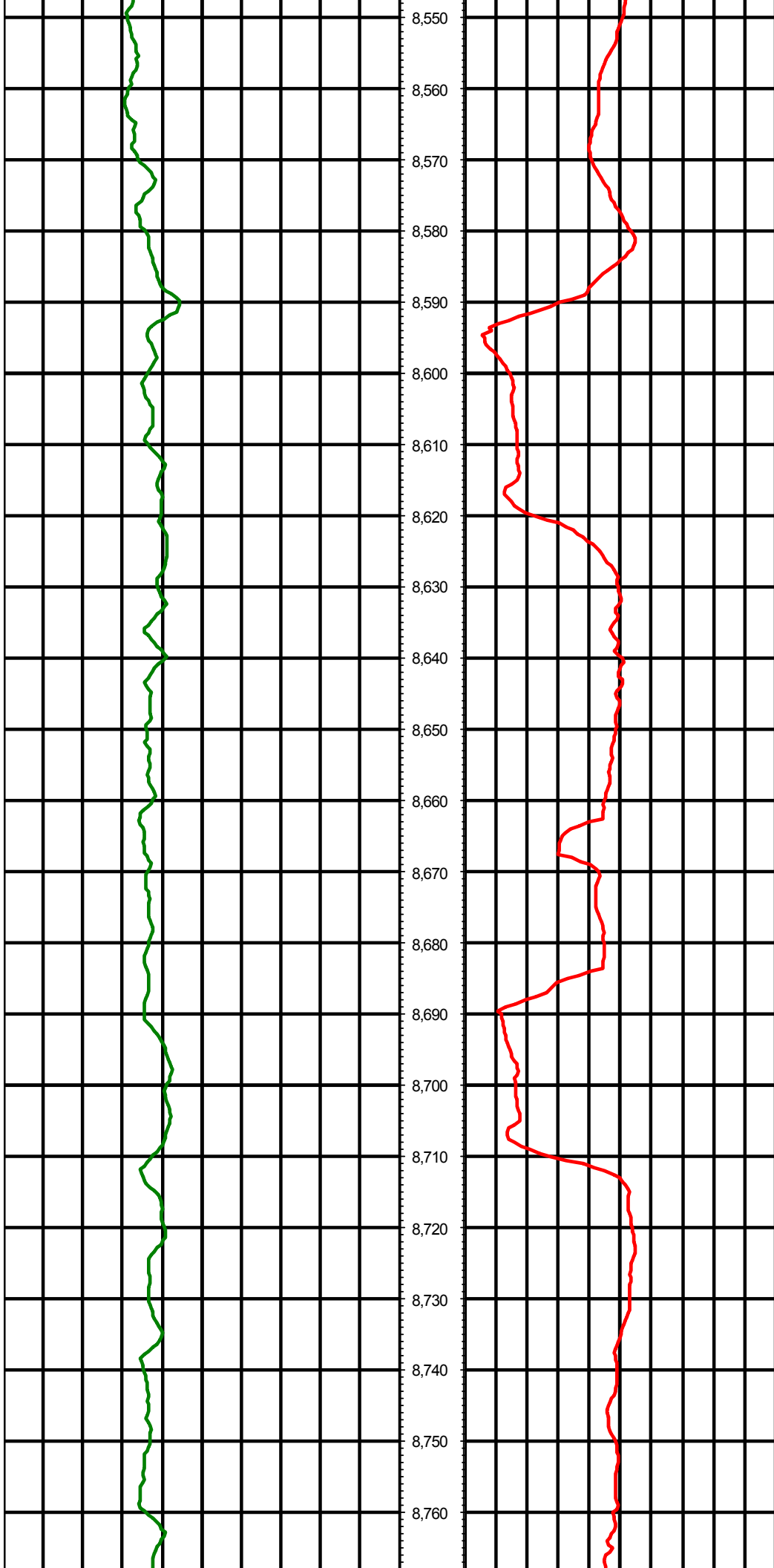






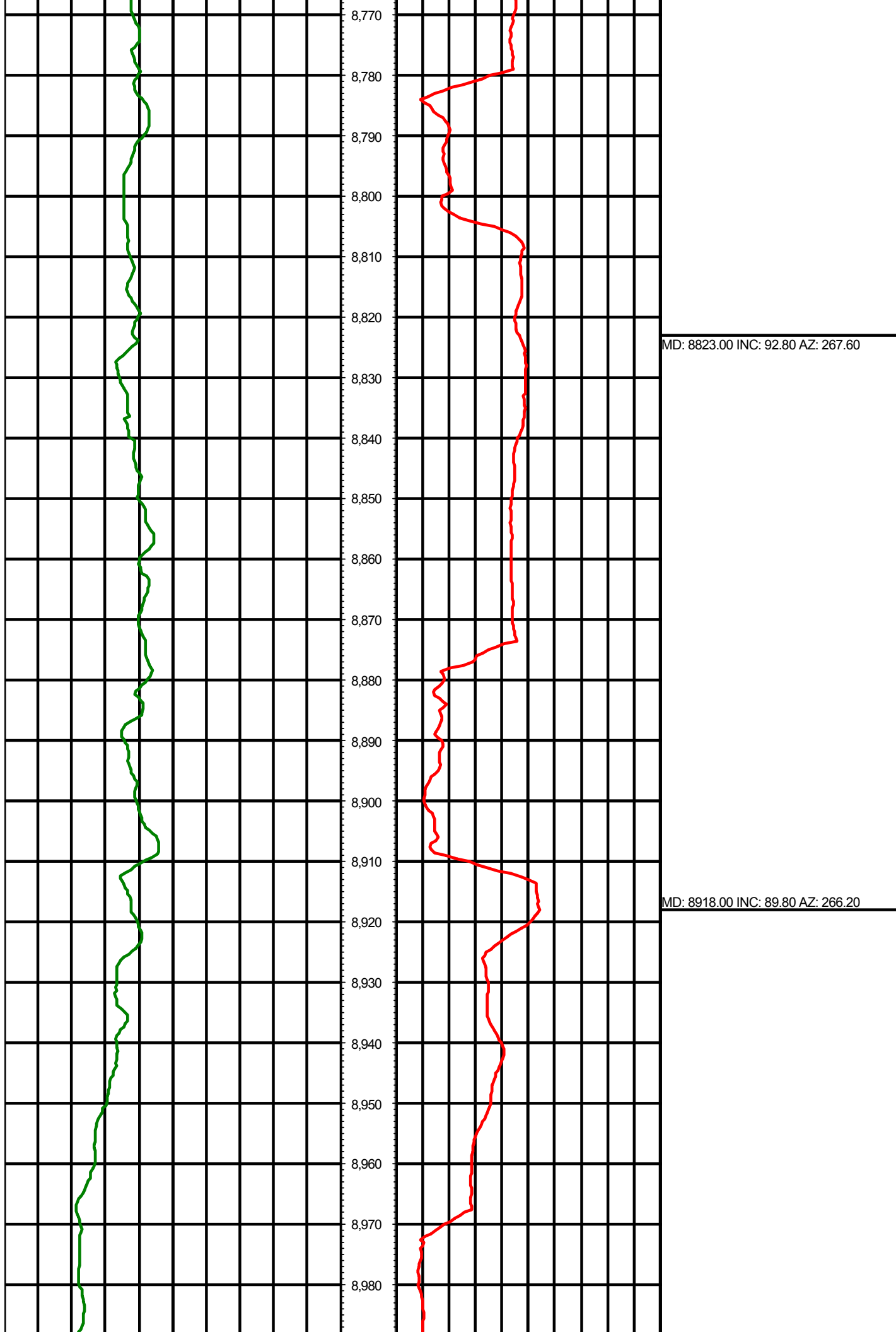


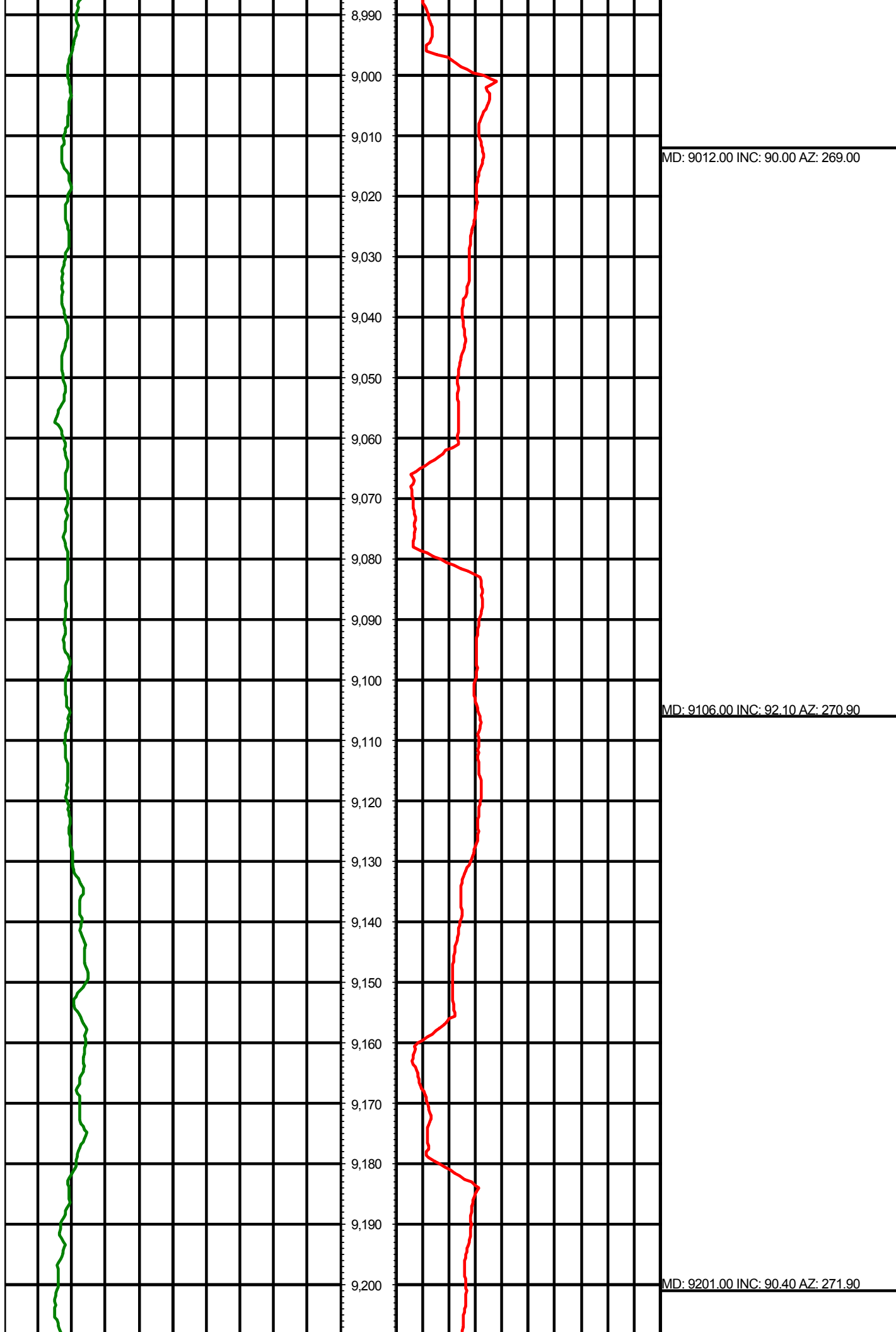


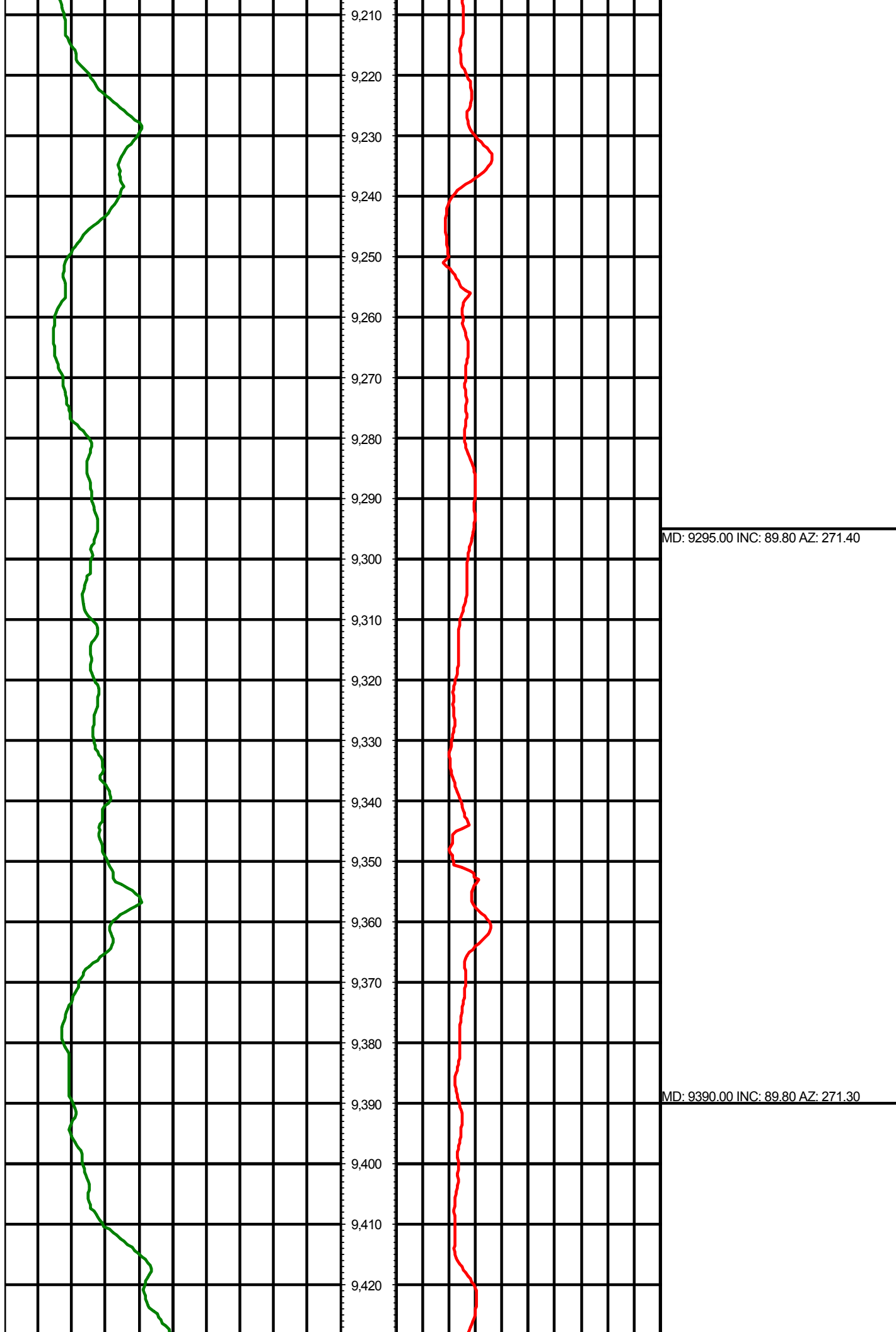


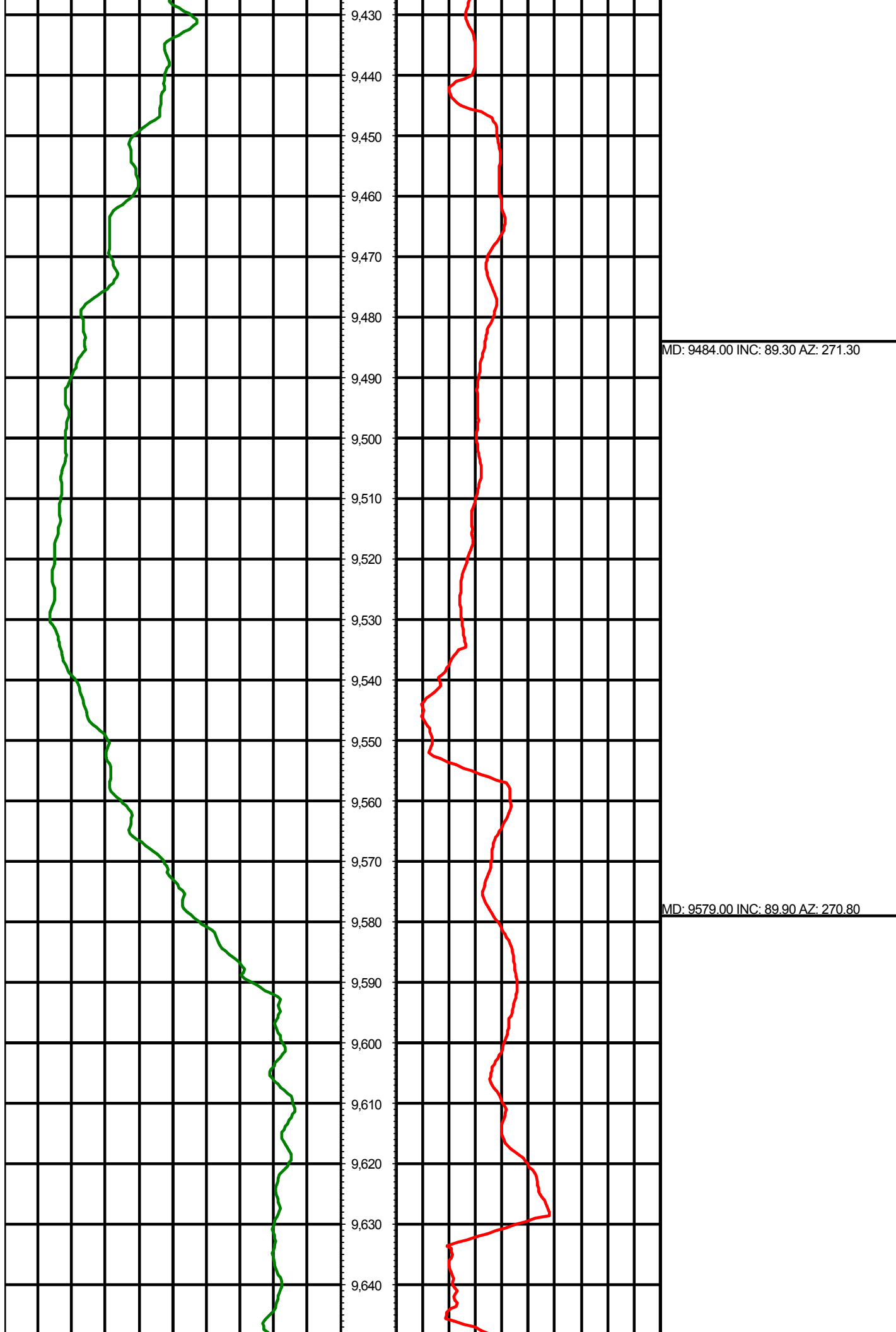
MD: 8634.00 INC: 90.40 AZ: 263.60

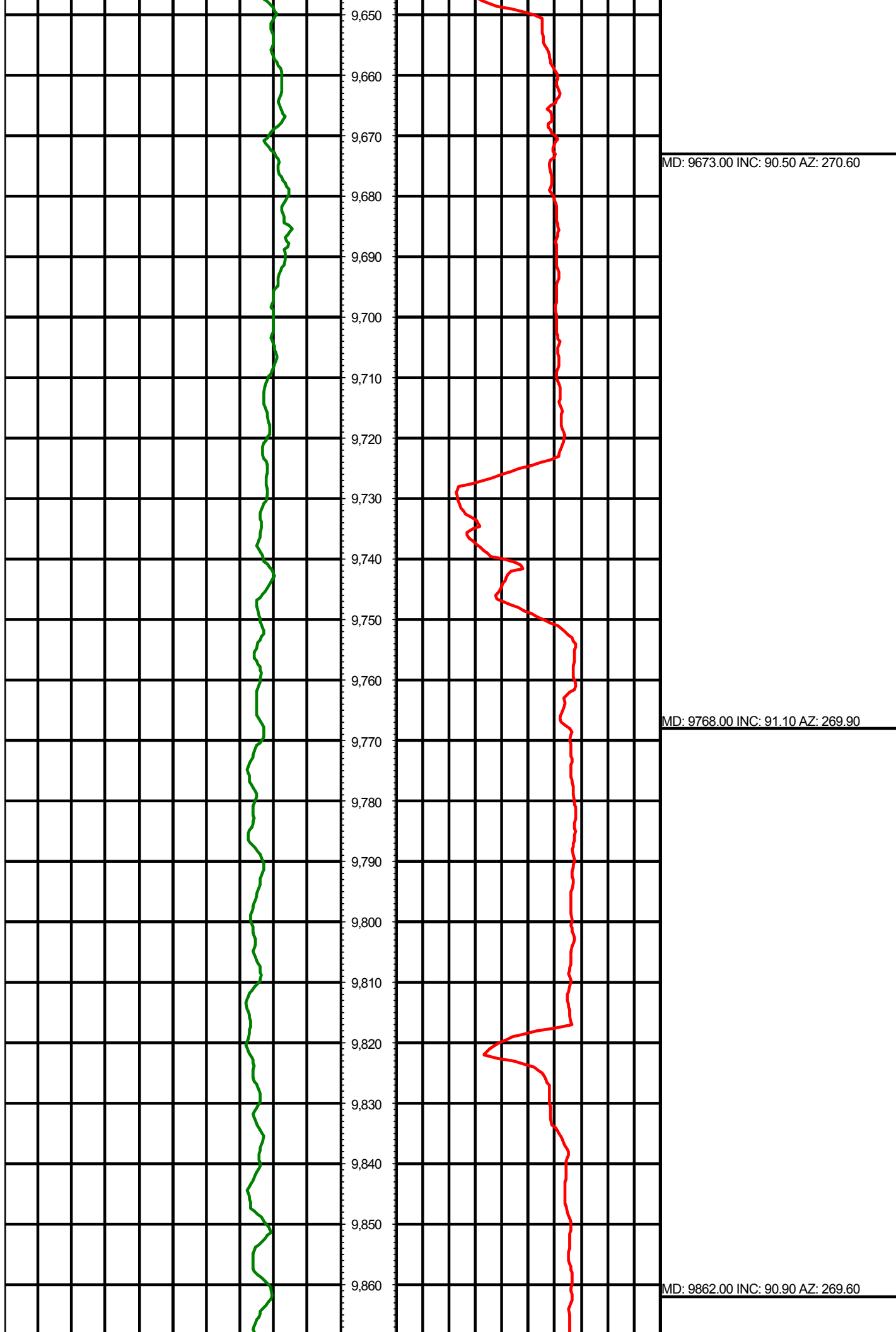
MD: 8729.00 INC: 91.70 AZ: 265.60

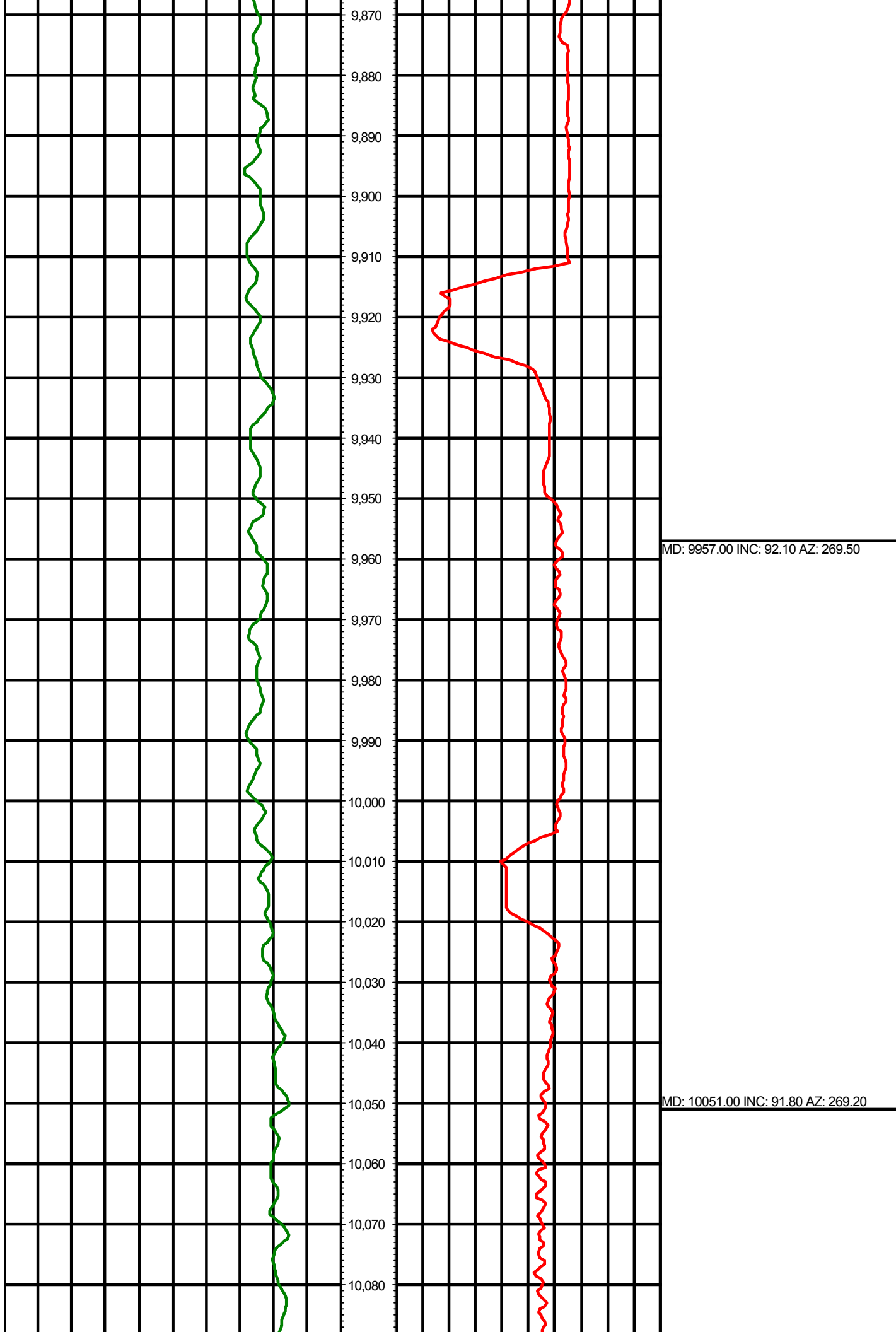






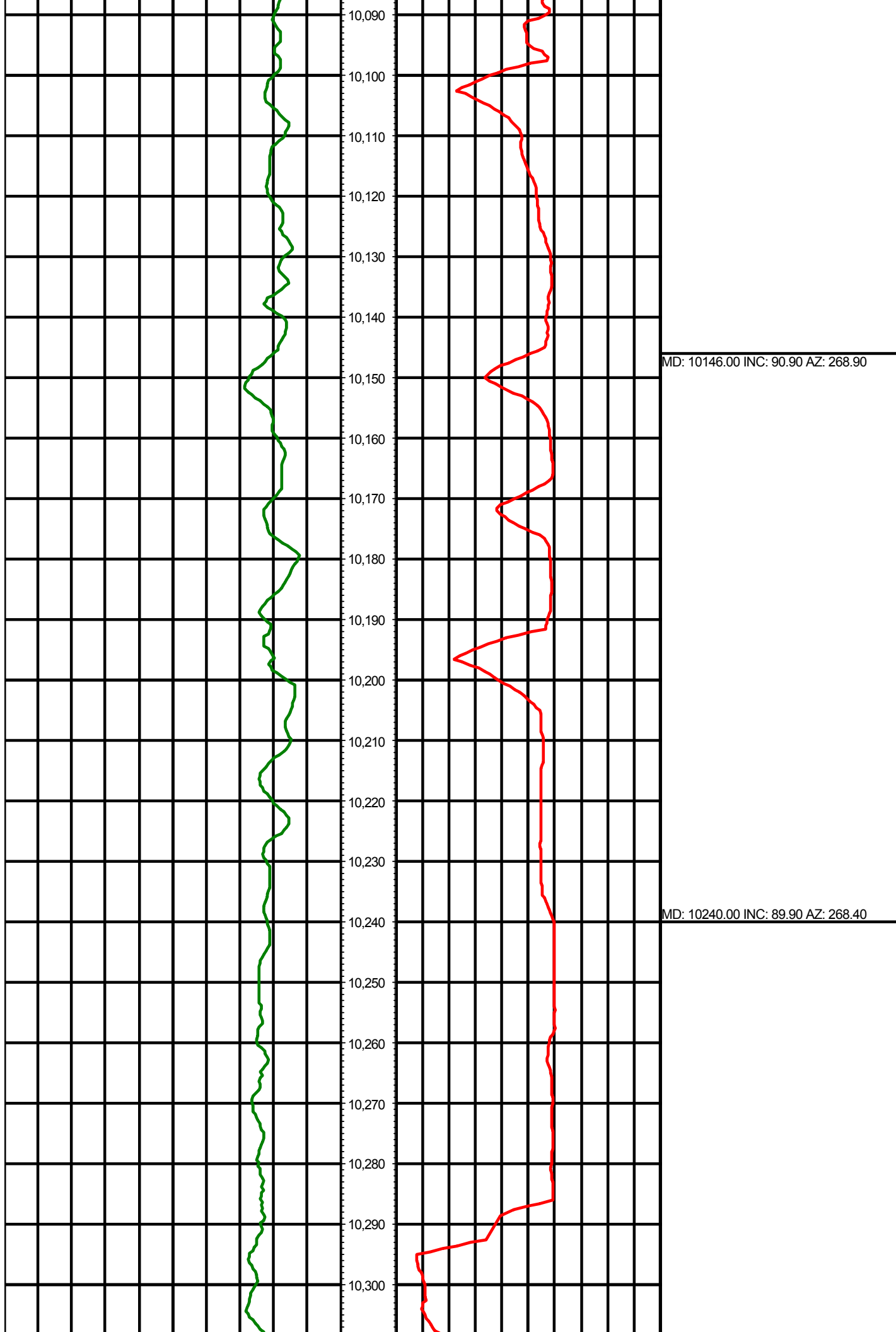


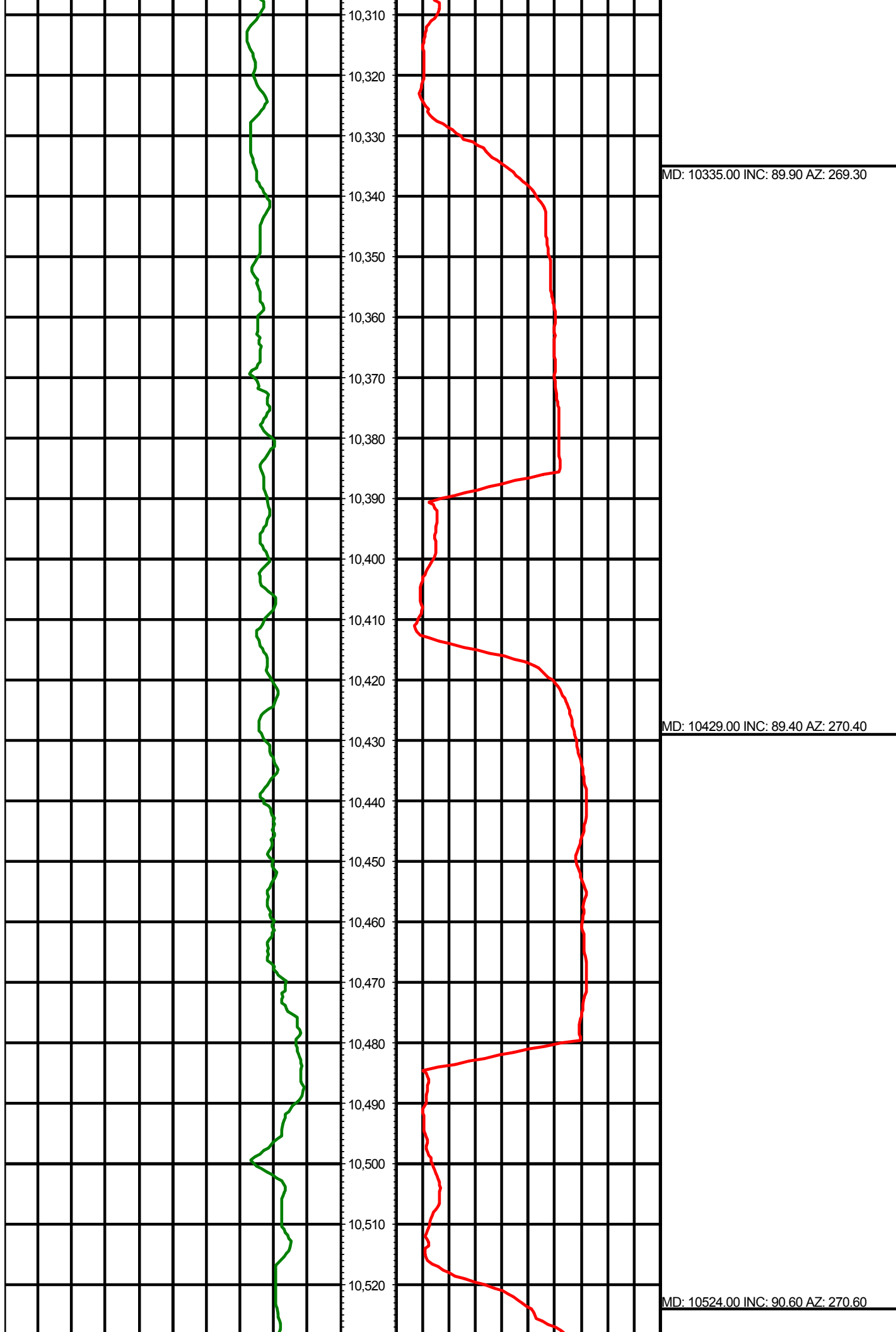


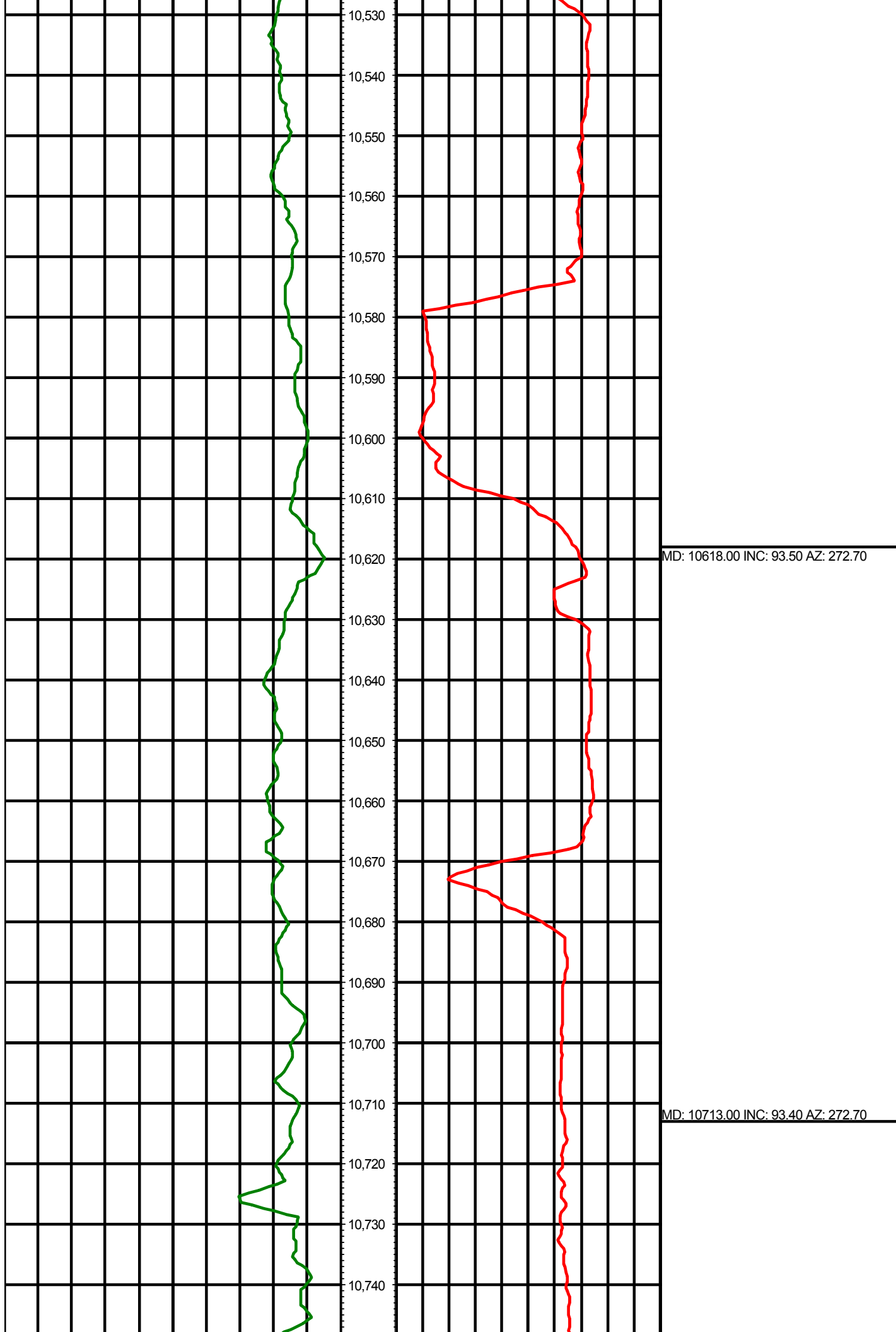


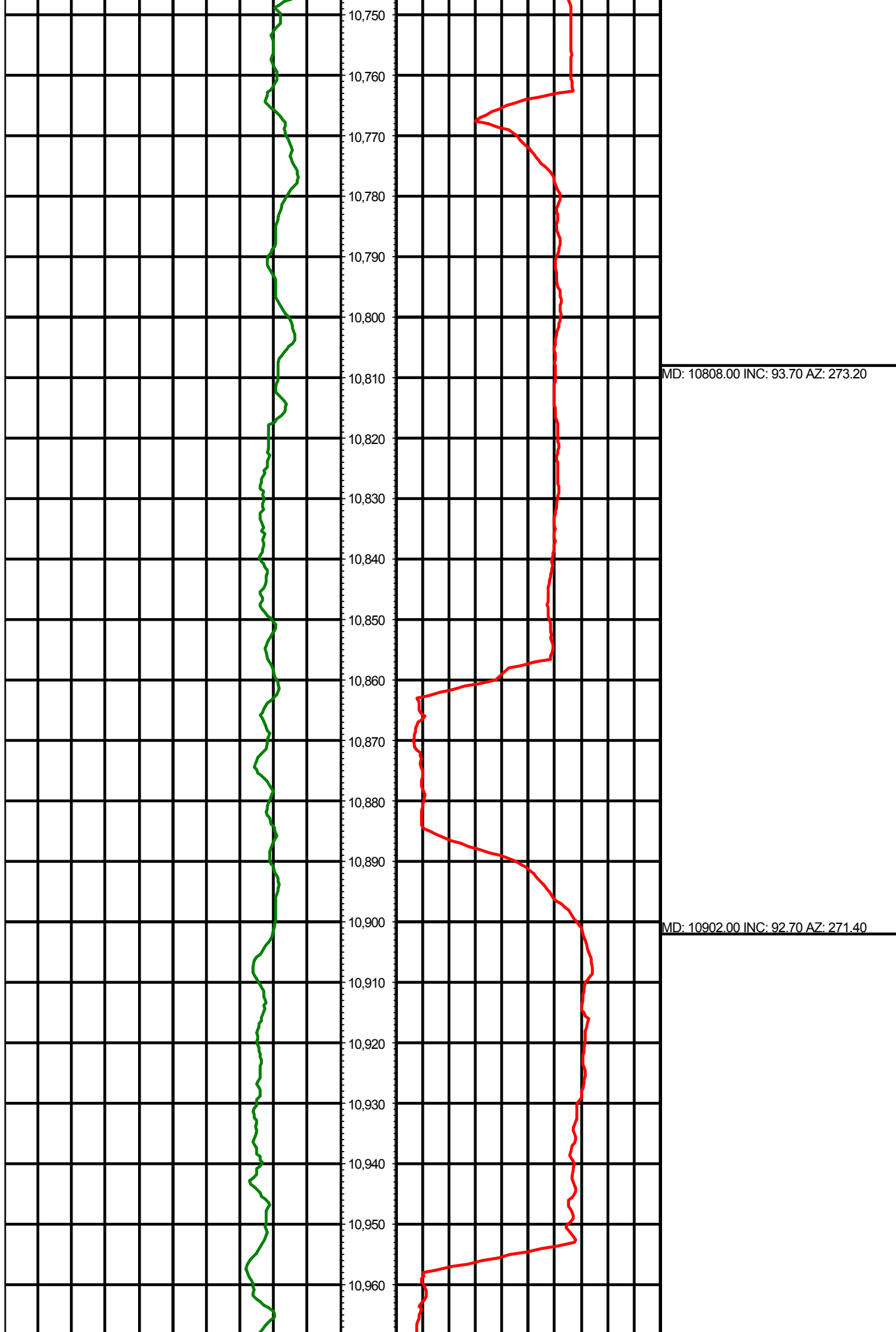
MD: 9957.00 INC: 92.10 AZ: 269.50

MD: 10051.00 INC: 91.80 AZ: 269.20









MD: 10808.00 INC: 93.70 AZ: 273.20

MD: 10902.00 INC: 92.70 AZ: 271.40

