



Kerr-McGee Oil & Gas Onshore LP

A subsidiary of Anadarko Petroleum Corporation

1099 18th Street
Denver, CO 80202
720-929-6000

January 5, 2015

Matt Lepore
Director, Colorado Oil and Gas Conservation Commission
Department of Natural Resources
The Chancery Building
1120 Lincoln Street, Suite 801
Denver, CO 80203

Re: **30 Day Certification Letter - 318A.e**
WILSON RANCH 31N-27HZ (Doc No. 400760540)
Township 4 North, Range 68 West
Section 26: SENE
Unit Acreage: 640 acres
Unit Spacing: 04N-68W-Sec 26 N2
04N-68W-Sec 27 N2
Weld County, Colorado

Dear Director Lepore:

Kerr-McGee Oil and Gas Onshore LP ("KMG") hereby certifies that a thirty (30) day notice has been given by certified mail to all mineral owners in the proposed wellbore spacing unit. We have not received any objections to such well location, proposed spacing unit, or additional producing formation. KMG hereby respectfully requests approval of this boundary well.

If you have any questions or issues regarding this permit, please contact Cheryl Light at (720) 929-6461.

Sincerely,

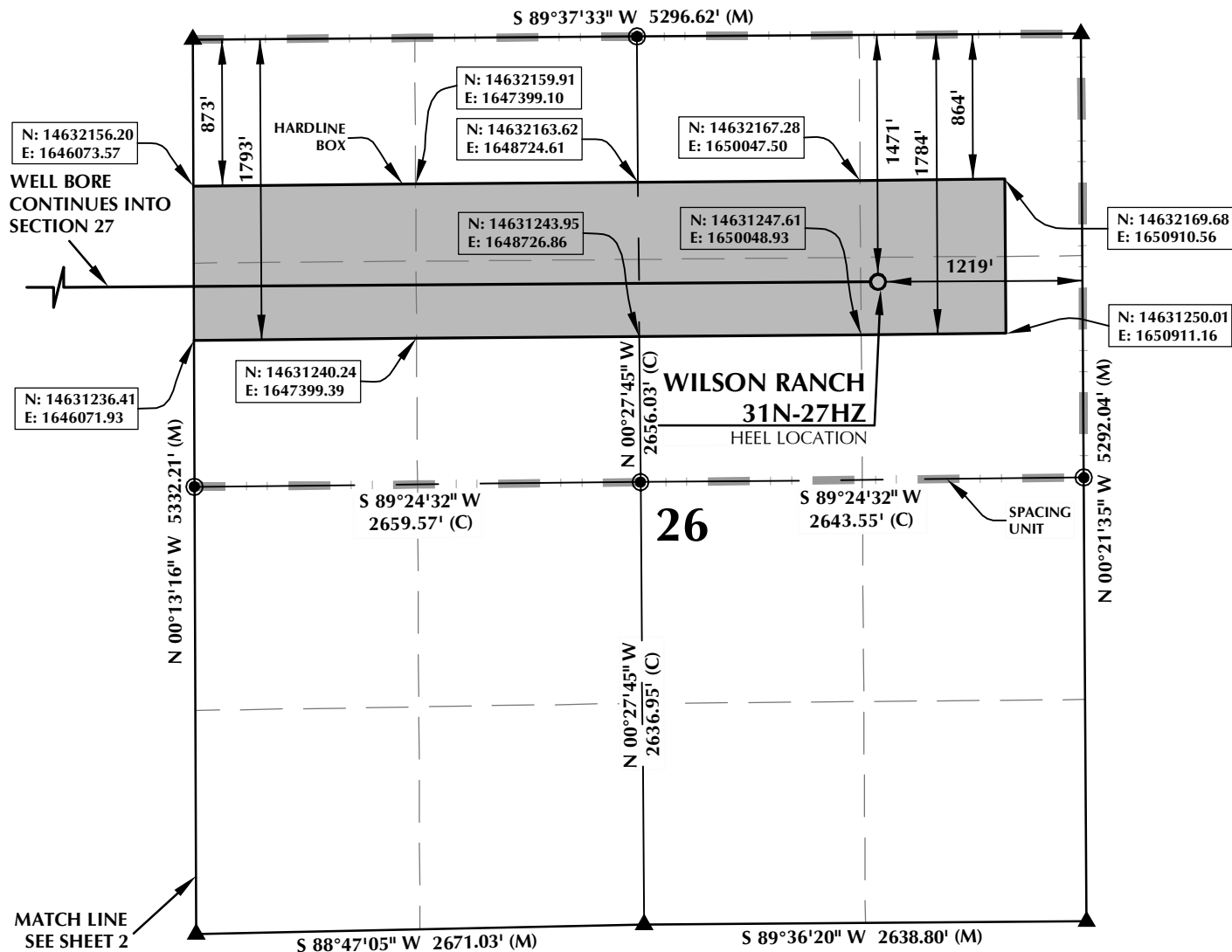
Kerr-McGee Oil and Gas Onshore LP

A handwritten signature in blue ink that reads 'RPowers'.

Ronett Powers
Regulatory Analyst II

Enclosure

SPACING UNIT: WILSON RANCH 31N-27HZ T4N, R68W



HEEL LOCATION
 N: 14,631,562.10'
 E: 1,650,152.23'

LATITUDE= 40.28786°
 LONGITUDE= -104.965089°

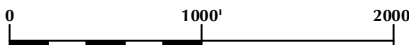
LATITUDE= 40°17'16.322"
 LONGITUDE= -104°57'54.322"

AVAILABLE FOOTAGE
 9681'

BOTTOM HOLE LOCATION
 N: 14,631,553.19'
 E: 1,641,245.19'

LATITUDE= 40.287848°
 LONGITUDE= -104.997029°

LATITUDE= 40°17'16.253"
 LONGITUDE= -104°59'49.304"



SCALE: 1" = 1000'

NOTES:

- ▲ INDICATES FOUND SECTION CORNER
- INDICATES CALCULATED CORNER
- BEARINGS, DISTANCES, AND OFFSETS ARE BASED ON COLORADO COORDINATE SYSTEM 1983, NORTH ZONE
- COMBINED SCALE FACTOR: .99971841
- N / E COORDINATES ARE BASED ON UTM COORDINATE SYSTEM NAD83, ZONE 13
- LATITUDE AND LONGITUDE COORDINATES ARE NAD83 (CORS96)(EPOCH:2002)
- THIS EXHIBIT DOES NOT REPRESENT A LAND SURVEY PLAT OR IMPROVEMENT SURVEY PLAT AS DEFINED BY C.R.S. 38-51-102 AND CANNOT BE RELIED UPON TO DETERMINE OWNERSHIP.

WELL PAD - WILSON RANCH 5C-27HZ

WILSON RANCH 31N-27HZ
 SPACING UNIT EXHIBIT
 1471' FNL & 1219' FEL SENE (HEEL)
 LOCATED IN SECTION 26
 1365' FNL & 472' FWL SWNW (BOTTOM)
 LOCATED IN SECTION 27
 T4N, R68W, 6TH P.M.
 WELD COUNTY, COLORADO

**Kerr-McGee Oil &
 Gas Onshore L.P.**
 1099 18th Street
 Denver, Colorado 80202



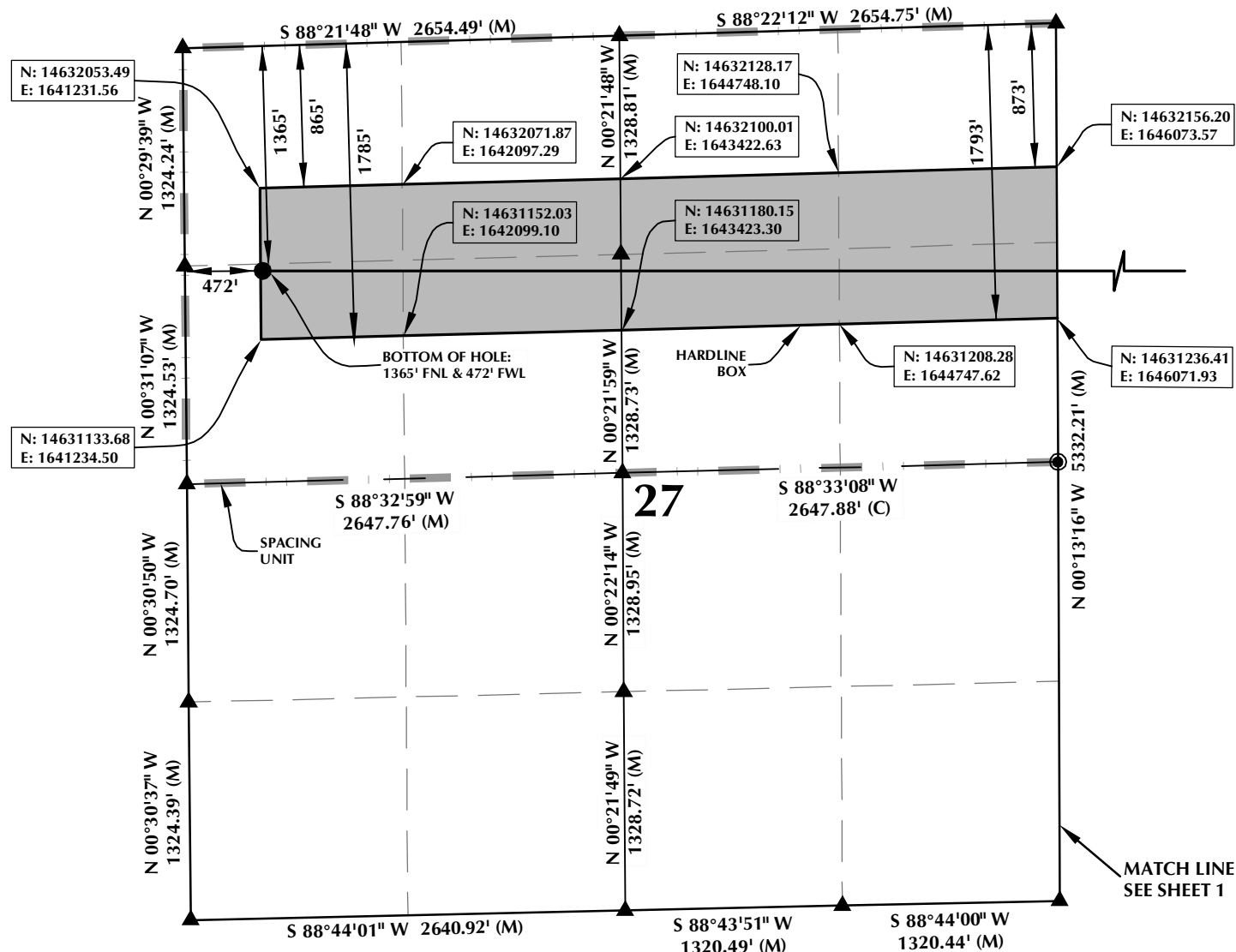
CONSULTING, LLC

SHERIDAN OFFICE
 2155 North Main Street
 Sheridan, Wyoming 82801
 Phone 307-674-0609

LOVELAND OFFICE
 1635 Foxtrail Drive, Suite 204
 Loveland, Colorado 80538
 Phone 970-776-4331

DRAFTED BY:	LMO	CHECKED BY:	BJR	SHEET NO:
DATE DRAFTED:	5/1/14	DATE SURVEYED:	4/23/14	1
REVISED:	12/22/14	FILE NAME:	14-19	1 OF 2

SPACING UNIT: WILSON RANCH 31N-27HZ T4N, R68W



HEEL LOCATION
N: 14,631,562.10'
E: 1,650,152.23'

LATITUDE= 40.28786°
LONGITUDE= -104.965089°

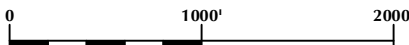
LATITUDE= 40°17'16.322"
LONGITUDE= -104°57'54.322"

AVAILABLE FOOTAGE
9681'

BOTTOM HOLE LOCATION
N: 14,631,553.19'
E: 1,641,245.19'

LATITUDE= 40.287848°
LONGITUDE= -104.997029°

LATITUDE= 40°17'16.253"
LONGITUDE= -104°59'49.304"



SCALE: 1" = 1000'

NOTES:

- ▲ INDICATES FOUND SECTION CORNER
- INDICATES CALCULATED CORNER
- BEARINGS, DISTANCES, AND OFFSETS ARE BASED ON COLORADO COORDINATE SYSTEM 1983, NORTH ZONE
- COMBINED SCALE FACTOR: .99971841
- N / E COORDINATES ARE BASED ON UTM COORDINATE SYSTEM NAD83, ZONE 13
- LATITUDE AND LONGITUDE COORDINATES ARE NAD83 (CORS96)(EPOCH:2002)
- THIS EXHIBIT DOES NOT REPRESENT A LAND SURVEY PLAT OR IMPROVEMENT SURVEY PLAT AS DEFINED BY C.R.S. 38-51-102 AND CANNOT BE RELIED UPON TO DETERMINE OWNERSHIP.

WELL PAD - WILSON RANCH 5C-27HZ

WILSON RANCH 31N-27HZ
SPACING UNIT EXHIBIT
1471' FNL & 1219' FEL SENE (HEEL)
LOCATED IN SECTION 26
1365' FNL & 472' FWL SWNW (BOTTOM)
LOCATED IN SECTION 27
T4N, R68W, 6TH P.M.
WELD COUNTY, COLORADO

**Kerr-McGee Oil &
Gas Onshore L.P.**
1099 18th Street
Denver, Colorado 80202



CONSULTING, LLC

SHERIDAN OFFICE
2155 North Main Street
Sheridan, Wyoming 82801
Phone 307-674-0609

LOVELAND OFFICE
1635 Foxtrail Drive, Suite 204
Loveland, Colorado 80538
Phone 970-776-4331

DRAFTED BY:	LMO	CHECKED BY:	BJR	SHEET NO:
DATE DRAFTED:	5/1/14	DATE SURVEYED:	4/23/14	2
REVISED:	12/22/14	FILE NAME:	14-19	2 OF 2