

T4N, R68W

S 89°37'33" W 5296.62' (M)

NW. COR.
SEC. 26, T4N, R68W
FOUND 2 1/2" ALUM. CAP
L.S. NO. 24305

NE. COR.
SEC. 26, T4N, R68W
FOUND 2 1/2" ALUM. CAP
L.S. NO. 26969

WELL BORE
CONTINUES INTO
SECTION 27

WILSON RANCH

31N-27HZ
SURFACE LOCATION

N 86°40'15" W 9563' GRID
N 86°19'25" W TRUE
S 85°05'45" W MAGNETIC

26

S 89°24'32" W
2659.57' (C)

S 89°24'32" W
2643.55' (C)

N 00°13'16" W 5332.21' (M)

N 00°27'45" W
2656.03' (C)

N 00°27'45" W
2636.95' (C)

N 00°21'35" W 5292.04' (M)

SURFACE LOCATION
GROUND ELEVATION= 4997.4'
NAD 83
LATITUDE= 40.286170°
LONGITUDE= -104.962821°

BOTTOM HOLE LOCATION
NAD 83
LATITUDE= 40.287848°
LONGITUDE= -104.997029°

LATITUDE= 40°17'16.253"
LONGITUDE= -104°59'49.304"

MATCH LINE
SEE SHEET 2

SW. COR.
SEC. 26, T4N, R68W
FOUND 3 1/4" ALUM. CAP
L.S. NO. 7242

S. 1/4 COR.
SEC. 26, T4N, R68W
FOUND 2 1/2" ALUM. CAP
L.S. NO. 38345

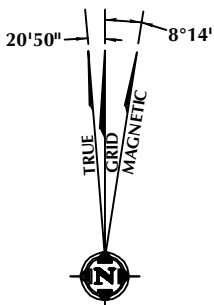
SE. COR.
SEC. 26, T4N, R68W
FOUND 3 1/4" ALUM. CAP
L.S. NO. 12374

S 88°47'05" W 2671.03' (M)

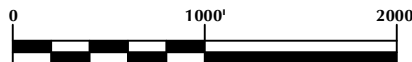
S 89°36'20" W 2638.80' (M)

NOTES:

- ▲ INDICATES FOUND SECTION CORNER
- INDICATES CALCULATED CORNER
- ELEVATION BASED ON NAVD88 (GEOID09)
- BASIS OF BEARING DERIVED FROM COLORADO COORDINATE SYSTEM 1983 NORTH ZONE UNLESS OTHERWISE NOTED.
- ALL MEASURED DISTANCES ARE GRID.
COMBINED SCALE FACTOR: .99971841
- OPERATOR: ROB WILSON / PDOP = 1.5
- SEE ADDENDUM TO WELL LOCATION CERTIFICATE FOR EXISTING IMPROVEMENTS WITHIN 500' OF THE WELL PAD.
- WELL FOOTAGES ARE MEASURED AT RIGHT ANGLES TO THE SECTION LINES.
- THE BOTTOM OF HOLE BEARS N86°40'15"W 9563' FROM THE SURFACE LOCATION.



NOTE:
MAGNETIC NORTH IS CURRENT AS OF 4/25/2014.
MAGNETIC NORTH CHANGES WEST 0°08' PER YEAR.



SCALE: 1" = 1000'

CERTIFICATE OF SURVEYOR:

THIS IS TO CERTIFY THAT THE ABOVE PLAT WAS PREPARED FROM FIELD NOTES OF ACTUAL SURVEY MADE BY ME OR UNDER MY SUPERVISION AND THAT THE SAME ARE TRUE AND CORRECT TO THE BEST OF MY KNOWLEDGE AND BELIEF. THIS CERTIFICATE DOES NOT REPRESENT A LAND SURVEY PLAT OR IMPROVEMENT SURVEY PLAT AS DEFINED BY C.S. 38-51-102 AND CANNOT BE RELIED UPON TO DETERMINE OWNERSHIP.

Benjamin J. Reenders
BENJAMIN J. REENDERS
PROFESSIONAL LAND SURVEYOR
COLORADO REGISTRATION NUMBER 4836
12/17/14

NOTICE:
ACCORDING TO COLORADO STATE LAW YOU MUST COMMENCE ANY LEGAL ACTION BASED UPON ANY DEFECT IN THIS SURVEY WITHIN THREE YEARS AFTER YOU FIRST DISCOVER SUCH DEFECT. IN NO EVENT MAY ANY ACTION BASED UPON ANY DEFECT IN THIS SURVEY BE COMMENCED MORE THAN TEN YEARS FROM THE DATE ON THE CERTIFICATION SHOWN HEREON.

WELL PAD - WILSON RANCH 5C-27HZ

WILSON RANCH 31N-27HZ
WELL LOCATION CERTIFICATE
2090' FNL & 586' FEL SENE (SURFACE)
LOCATED IN SECTION 26
1365' FNL & 472' FWL SWNW (BOTTOM)
LOCATED IN SECTION 27
T4N, R68W, 6TH P.M.
WELD COUNTY, COLORADO

**Kerr-McGee Oil &
Gas Onshore L.P.**
1099 18th Street
Denver, Colorado 80202



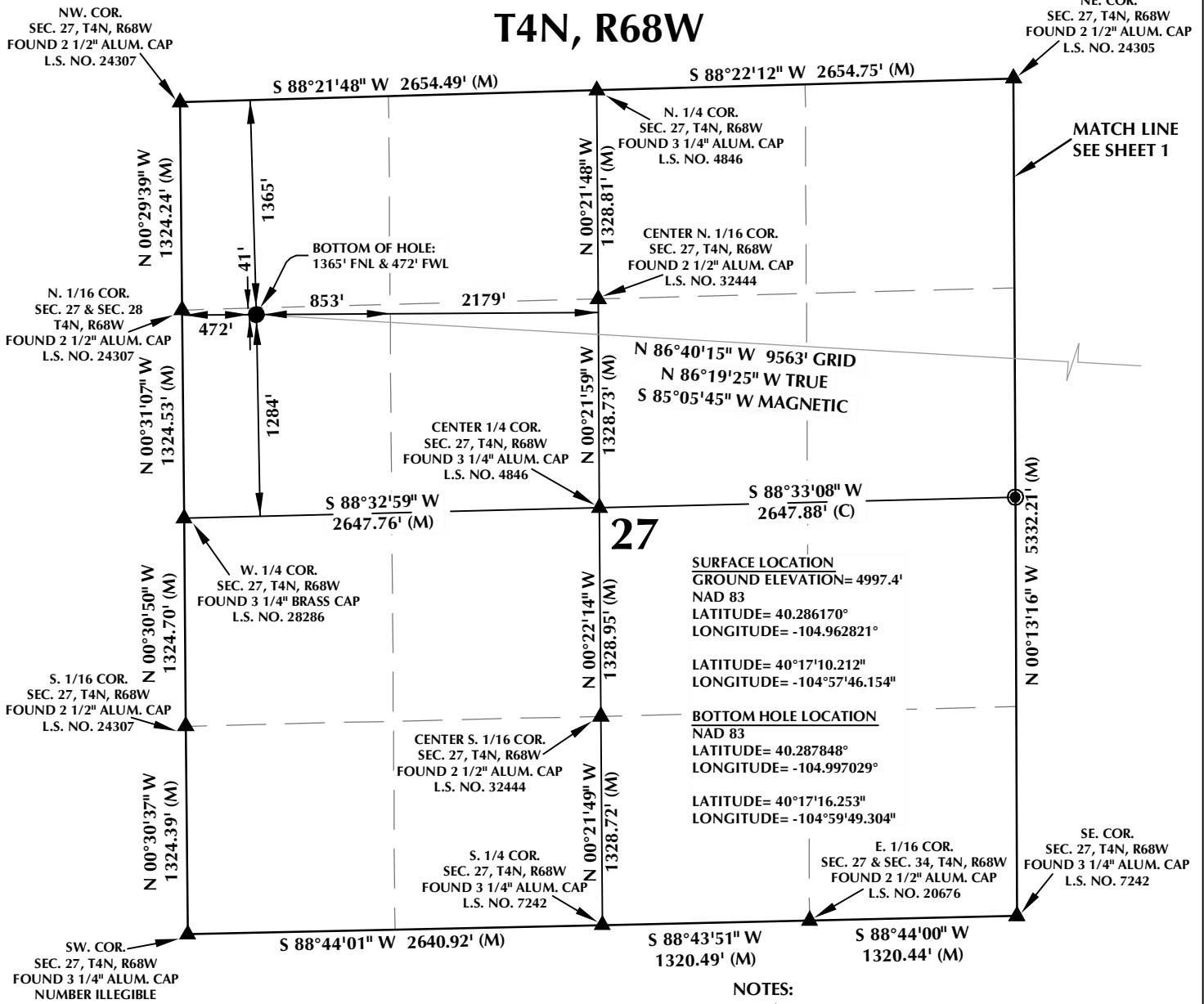
CONSULTING, LLC

SHERIDAN OFFICE
2155 North Main Street
Sheridan, Wyoming 82801
Phone 307-674-0609

LOVELAND OFFICE
1635 Foxtrail Drive, Suite 204
Loveland, Colorado 80538
Phone 970-776-4331

DRAFTED BY:	LMO	CHECKED BY:	BJR	SHEET NO:
DATE DRAFTED:	5/1/14	DATE SURVEYED:	4/23/14	1
REVISED:	12/17/14	FILE NAME:	14-19	1 OF 2

T4N, R68W

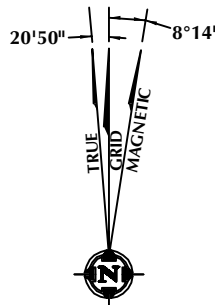


CERTIFICATE OF SURVEYOR:

THIS IS TO CERTIFY THAT THE ABOVE PLAT WAS PREPARED FROM FIELD NOTES OF ACTUAL SURVEY MADE BY ME OR UNDER MY SUPERVISION AND THAT THE SAME ARE TRUE AND CORRECT TO THE BEST OF MY KNOWLEDGE AND BELIEF. THIS CERTIFICATE DOES NOT REPRESENT A LAND SURVEY PLAT OR IMPROVEMENT SURVEY PLAT AS DEFINED BY C.S. 38-51-102 AND CANNOT BE RELIED UPON TO DETERMINE OWNERSHIP.

Benjamin J. Reenders
 BENJAMIN J. REENDERS
 PROFESSIONAL LAND SURVEYOR
 COLORADO REGISTRATION NUMBER 4836
 12/17/14

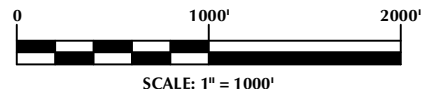
NOTICE:
 ACCORDING TO COLORADO STATE LAW YOU MUST COMMENCE ANY LEGAL ACTION BASED UPON ANY DEFECT IN THIS SURVEY WITHIN THREE YEARS AFTER YOU FIRST DISCOVER SUCH DEFECT. IN NO EVENT MAY ANY ACTION BASED UPON ANY DEFECT IN THIS SURVEY BE COMMENCED MORE THAN TEN YEARS FROM THE DATE ON THE CERTIFICATION SHOWN HEREON.



NOTE:
 MAGNETIC NORTH IS CURRENT AS OF 4/25/2014.
 MAGNETIC NORTH CHANGES WEST 0°08' PER YEAR.

NOTES:

- ▲ INDICATES FOUND SECTION CORNER
- INDICATES CALCULATED CORNER
- ELEVATION BASED ON NAVD88 (GEOID09)
- BASIS OF BEARING DERIVED FROM COLORADO COORDINATE SYSTEM 1983 NORTH ZONE UNLESS OTHERWISE NOTED.
- ALL MEASURED DISTANCES ARE GRID.
COMBINED SCALE FACTOR: .99971841
- OPERATOR: ROB WILSON / PDOP = 1.5
- SEE ADDENDUM TO WELL LOCATION CERTIFICATE FOR EXISTING IMPROVEMENTS WITHIN 500' OF THE WELL PAD.
- WELL FOOTAGES ARE MEASURED AT RIGHT ANGLES TO THE SECTION LINES.
- THE BOTTOM OF HOLE BEARS N86°40'15"W 9563' FROM THE SURFACE LOCATION.



WELL PAD - WILSON RANCH 5C-27HZ

WILSON RANCH 31N-27HZ
 WELL LOCATION CERTIFICATE
 2090' FNL & 586' FEL SENE (SURFACE)
 LOCATED IN SECTION 26
 1365' FNL & 472' FWL SWNW (BOTTOM)
 LOCATED IN SECTION 27
 T4N, R68W, 6TH P.M.
 WELD COUNTY, COLORADO

**Kerr-McGee Oil &
 Gas Onshore L.P.**
 1099 18th Street
 Denver, Colorado 80202



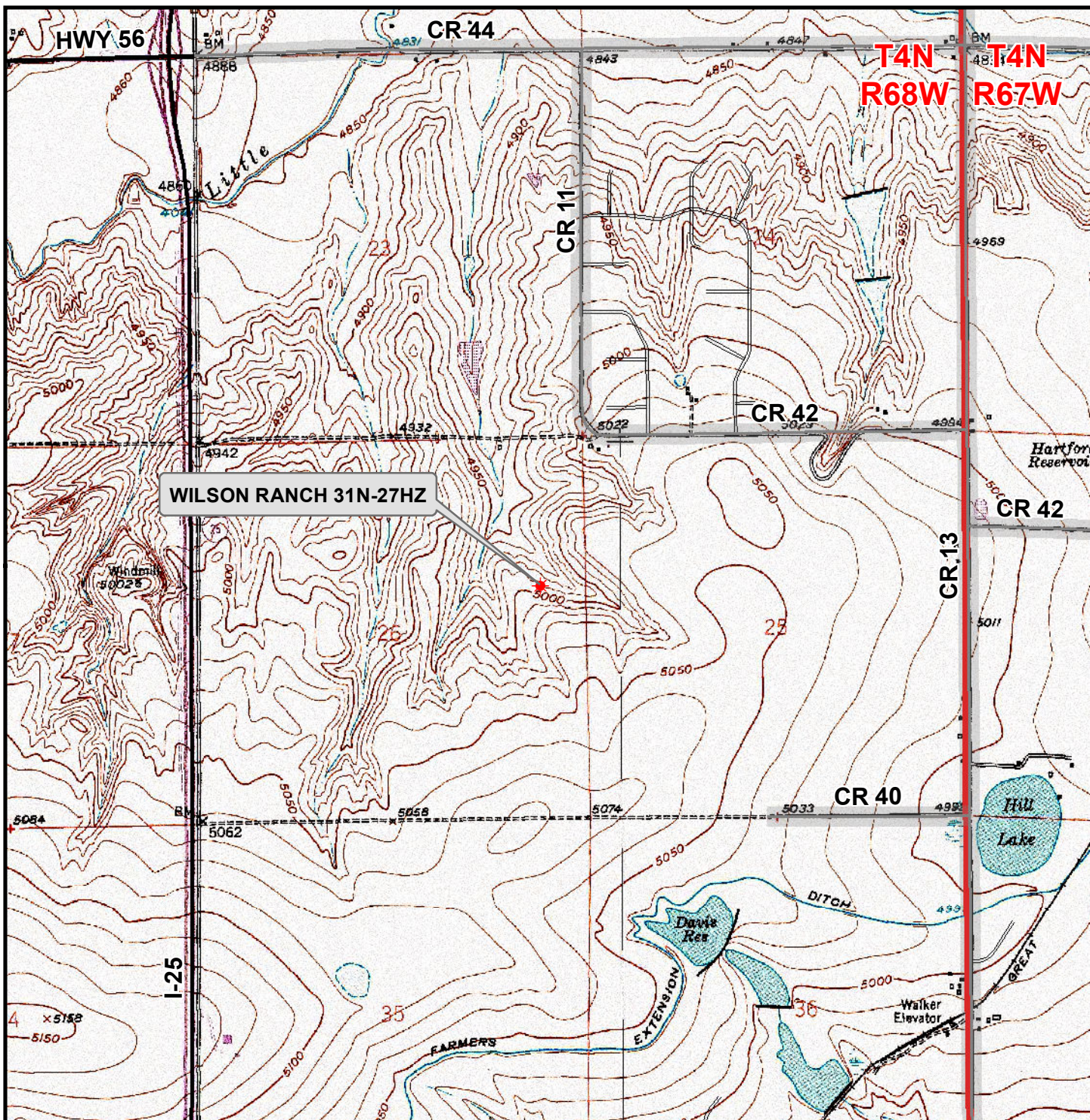
CONSULTING, LLC

SHERIDAN OFFICE
 2155 North Main Street
 Sheridan, Wyoming 82801
 Phone 307-674-0609

LOVELAND OFFICE
 1635 Foxtrail Drive, Suite 204
 Loveland, Colorado 80538
 Phone 970-776-4331

DRAFTED BY:	LMO	CHECKED BY:	BJR	SHEET NO:
DATE DRAFTED:	5/1/14	DATE SURVEYED:	4/23/14	2
REVISED:	12/17/14	FILE NAME:	14-19	2 OF 2

K:\ANADARKO\2014\2014_19_COLORADO_T4N_R68W_SEC_26 & SEC_27\GIS\Maps_ABC\WilsonRanch 5C-27HZ\WilsonRanch 31N-27HZ.mxd 4/28/2014 1:42:12 PM



Legend

- ★ Well - Fee - Proposed - - - - Road - Primitive - Existing - - - - Road - County - Existing
- - - - Road - Improved - Existing - - - - Road - Highway - Existing

WELL PAD - WILSON RANCH 5C-27HZ

**GENERAL LOCATION MAP
WILSON RANCH 31N-27HZ
LOCATED IN SECTION 26
T4N, R68W, 6th P.M.
WELD COUNTY, COLORADO**

**Kerr-McGee Oil &
Gas Onshore L.P.**

1099 18th Street
Denver, Colorado 80202



CONSULTING, LLC

SHERIDAN OFFICE
2155 North Main Street
Sheridan, Wyoming 82801
Phone 307-674-0609

LOVELAND OFFICE
1635 Foxtail Drive, Suite 204
Loveland, Colorado 80538
Phone 970-776-4331



SCALE: 1" = 2,000ft

NAD83 CO-Nft

DRAWN: JELO

DATE: 1 May 2014

REVISED:

DATE: