



Cathedral Energy Services  
1949 North Pyrite Road  
Casper, Wyoming 82604

**145391**

5":100' - MD

1/14/2015 10:37:50 AM

**CATHEDRAL**

**Oper. Company:** Encana Oil & Gas (USA) Inc.

**Country:** U.S.A.

**State / Province:** Colorado

**County / Parish:** Weld

**Started:** 10/29/2014 12:00 AM

**API/UWI:** 05-123-37616

**Field:** Wattenburg (Niobrara)

**Well:** Drieth 4F-6H-I368

**Rig:** Helmerich & Payne 522

**Ended:** 11/03/2014 12:30 PM

Gamma Ray  
Section Plane: 270.00  
Magnetic North: 8.55  
Gamma Attenuation Factor: 2.80  
Gamma Averaging: 7%

### Personnel

**Day Hand:** T. Kapsch

**Night Hand:** A. Stewart

**Comp. Emp:** Kirby Burchett

Maximum Temperature: 214°F

### Location

**Latitude:** 40.254080

**Longitude:** -105.038550

**Elev. GL:** 5110

**Elev. DF:**

**Elev. KB:** 5140

Log and Survey Depths Relative to Kelly Bushing (KB) Depth

### Hole Data

Size	From	To
12 1/4	0	864
8-3/4	864	7490
6-1/8	7490	11486

### Casing Data

Size	From	To
9-5/8	0	854
7	0	7477
4-1/2	0	11476

### Bit Sizes

Size	From	To
12-1/4	0	864
8-3/4	864	7490
6-1/8	7490	11486

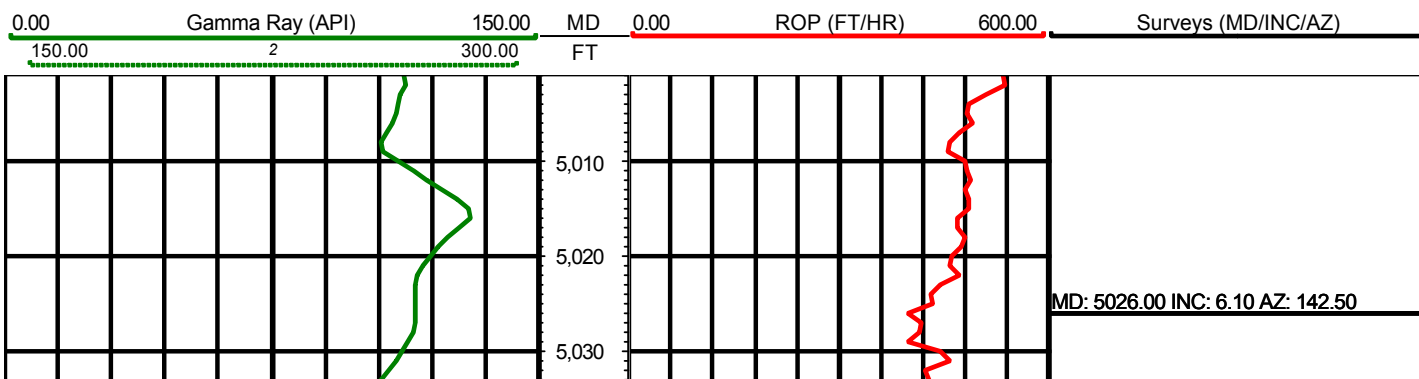
### Mud Data

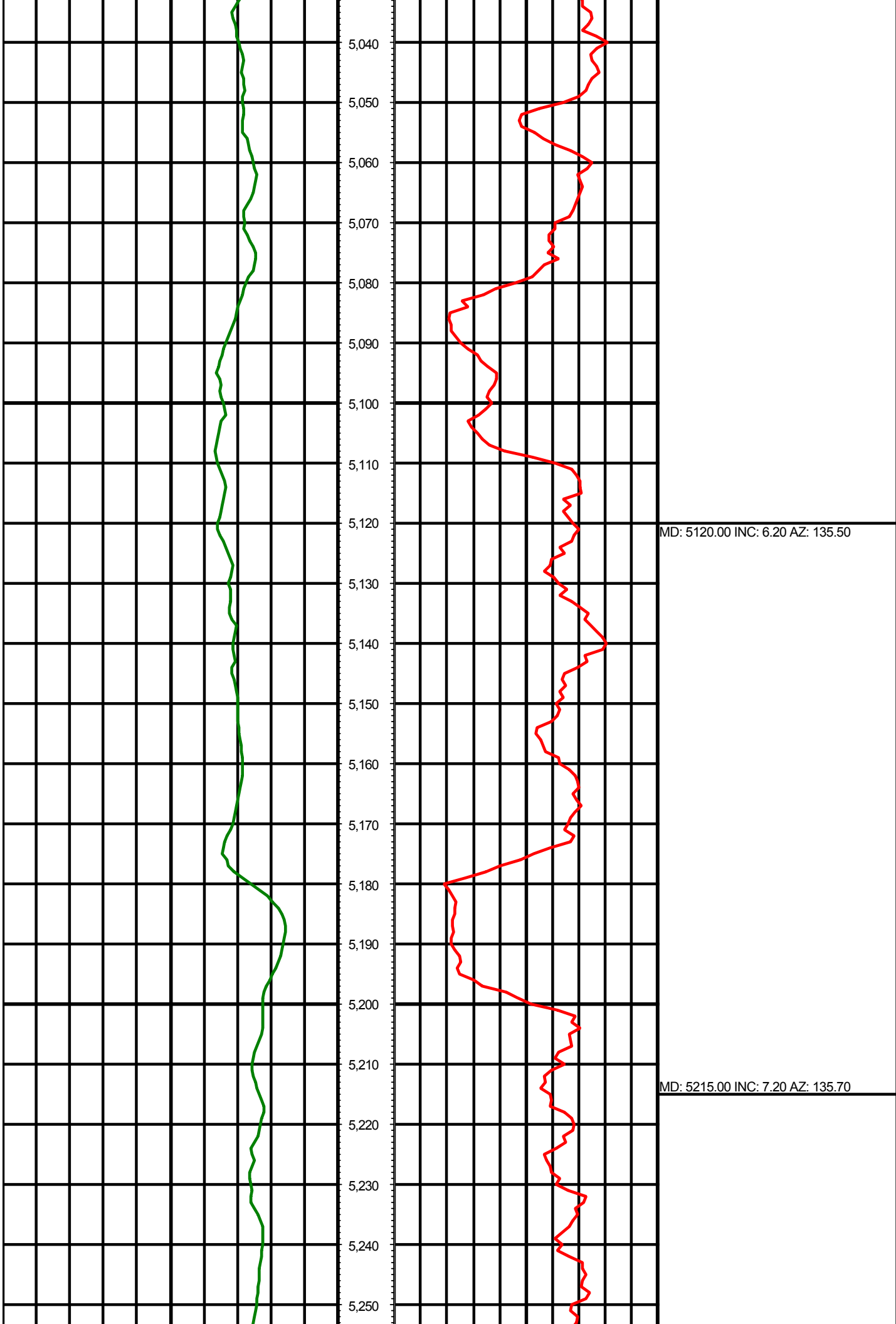
Type	Weight	Density	Viscosity	Rm	Rmf	Rmc	From	To
------	--------	---------	-----------	----	-----	-----	------	----

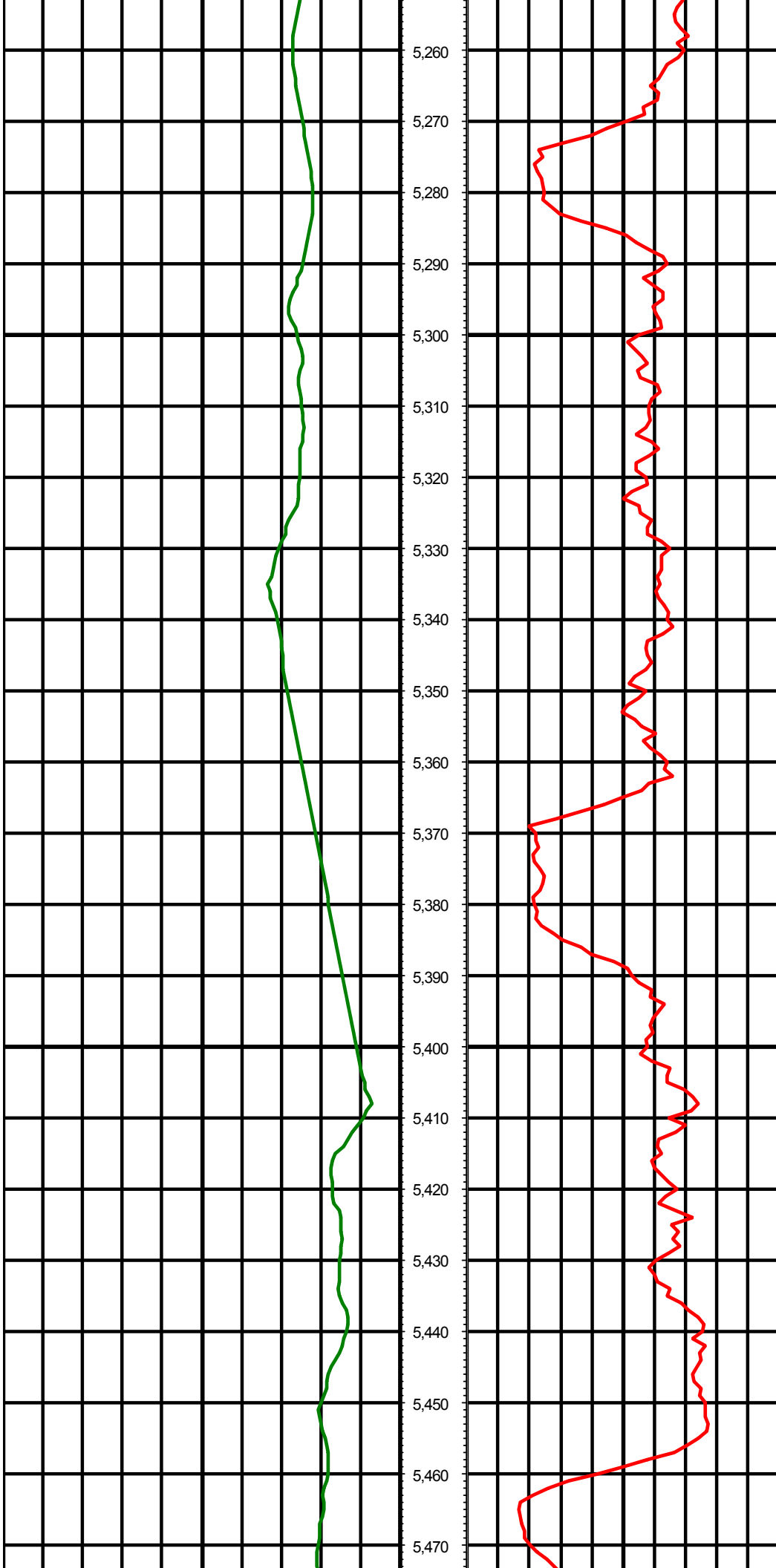
### Tool Run Data

Serial Number	Gamma Offset	Resist. Offset	Start Time	Start Depth	End Time	End Depth
---------------	--------------	----------------	------------	-------------	----------	-----------

*All interpretations are opinions based on inferences from electrical or other measurements and we cannot and do not guarantee the accuracy or correctness of any interpretation, and we shall not except in the case of gross or willful negligence on our part, be liable or responsible for any loss, cost damages or expenses incurred or sustained by anyone resulting from an interpretation made by any of our officers, agents, or employees.*

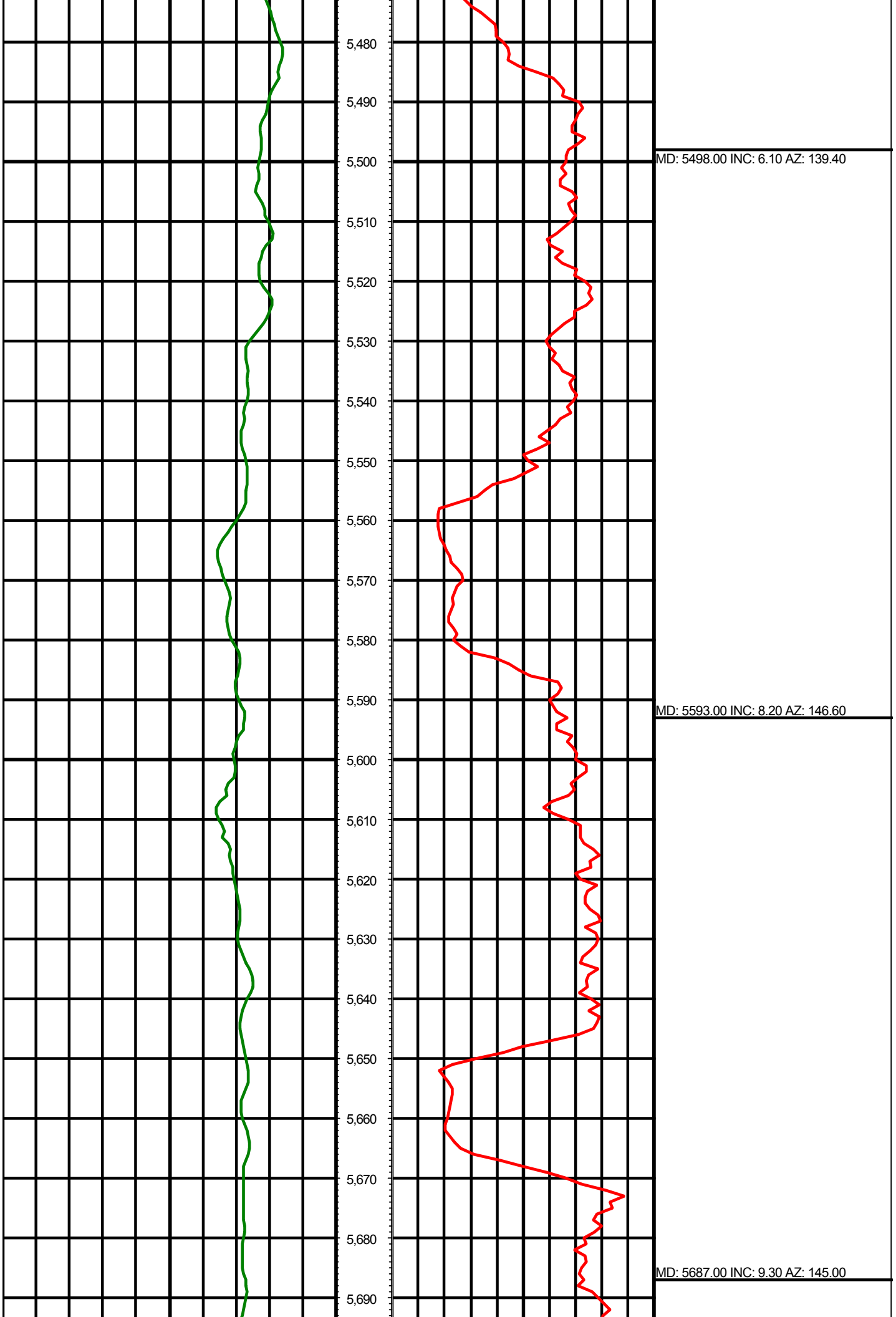


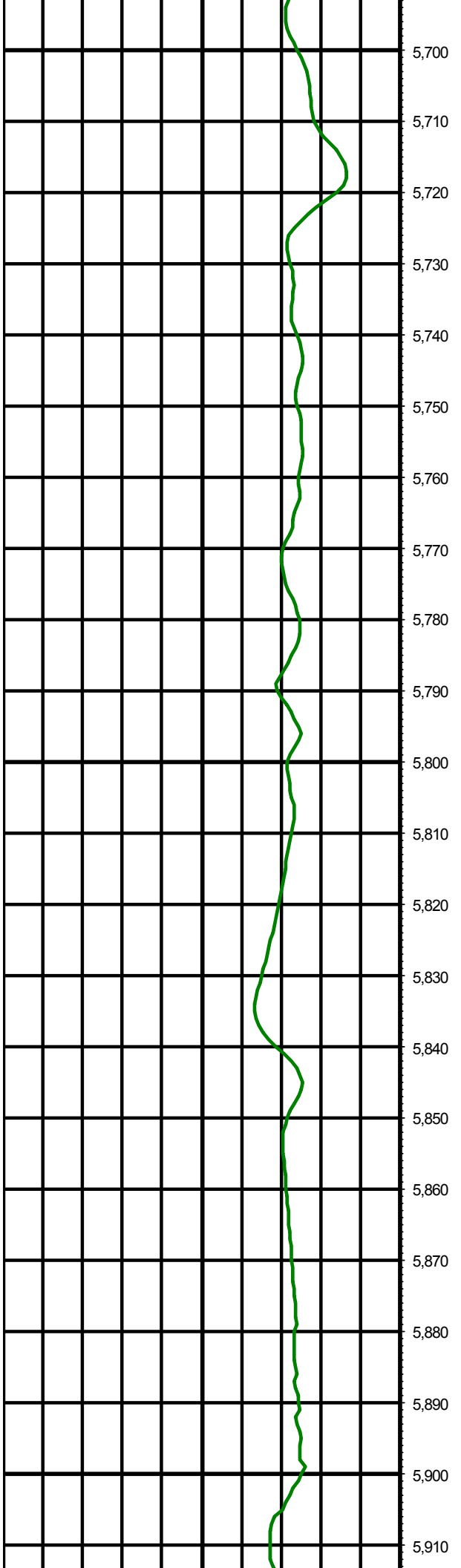




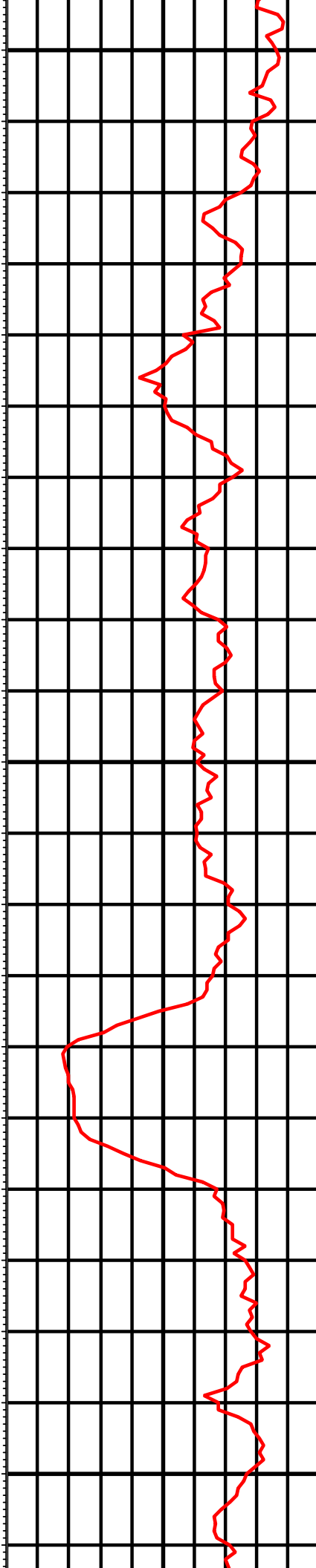
MD: 5309.00 INC: 7.90 AZ: 140.40

MD: 5403.00 INC: 7.80 AZ: 131.10



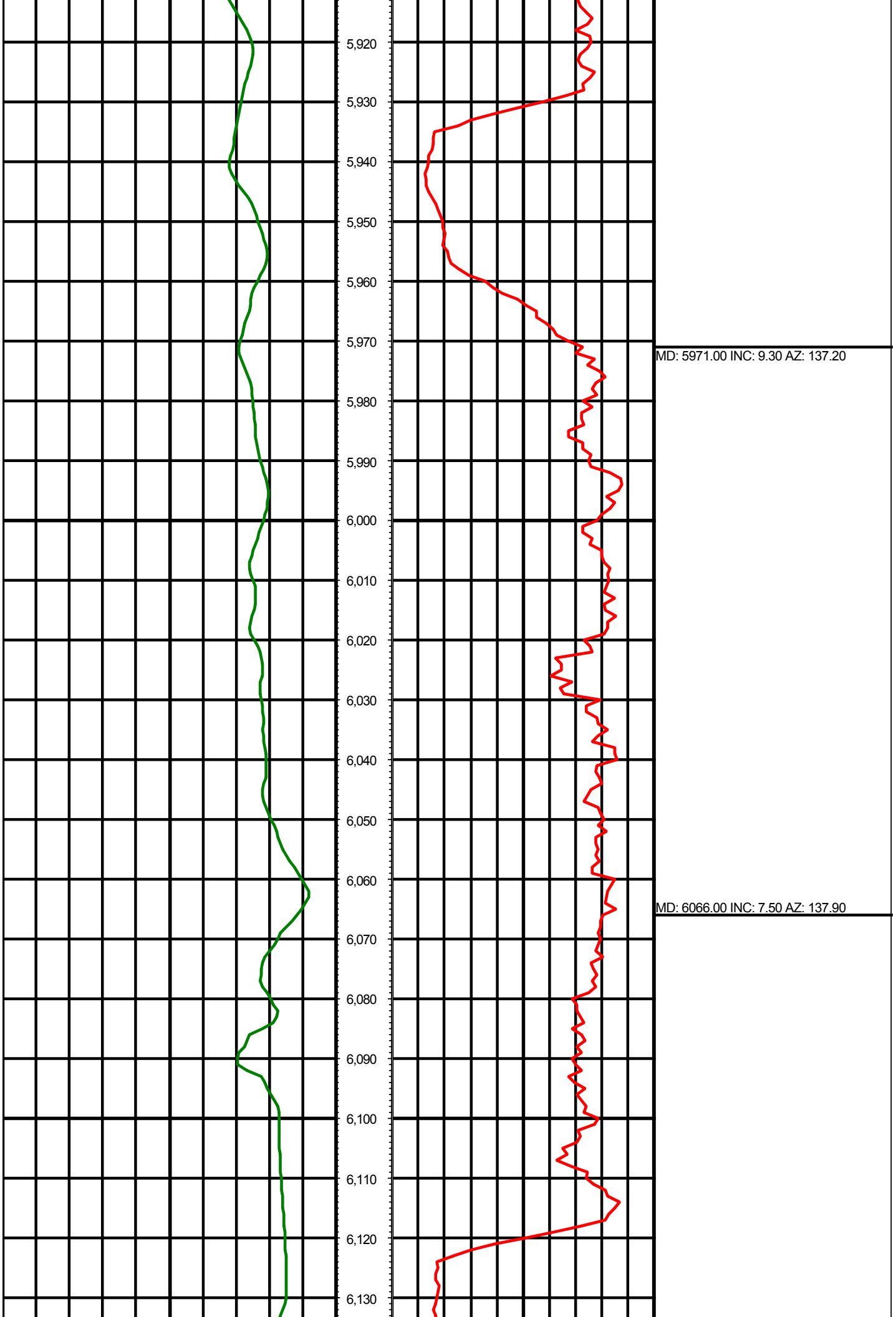


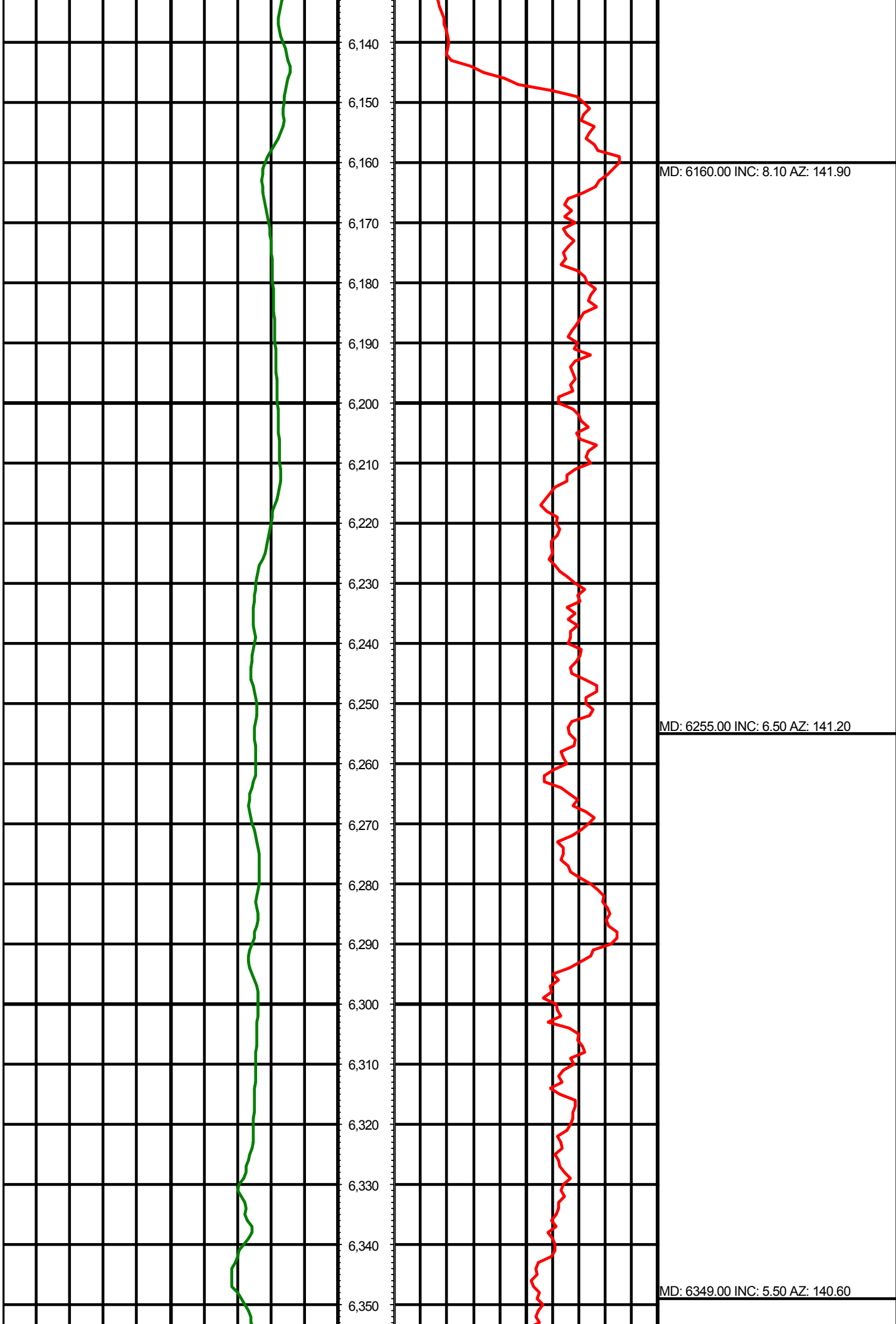
5,700  
5,710  
5,720  
5,730  
5,740  
5,750  
5,760  
5,770  
5,780  
5,790  
5,800  
5,810  
5,820  
5,830  
5,840  
5,850  
5,860  
5,870  
5,880  
5,890  
5,900  
5,910

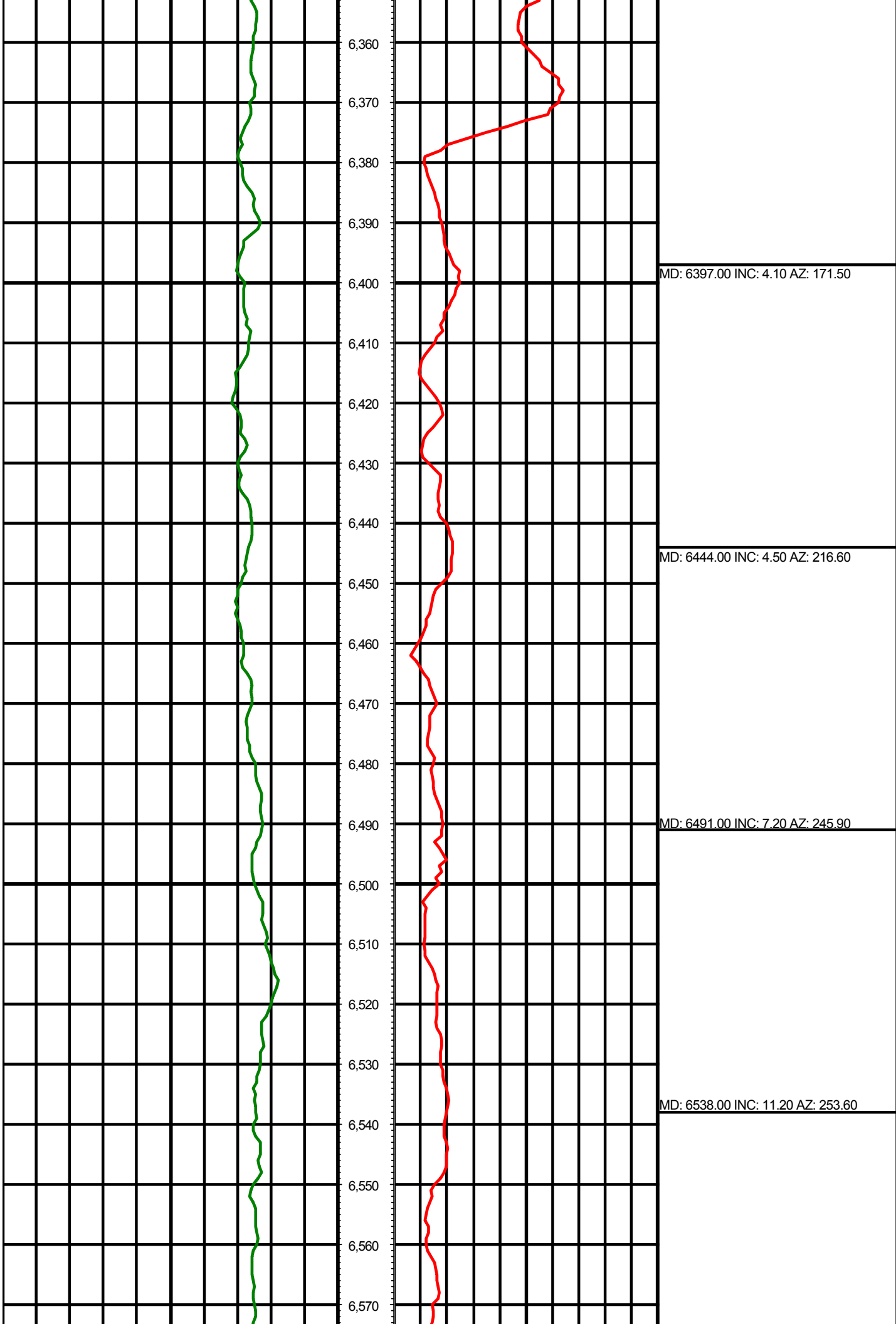


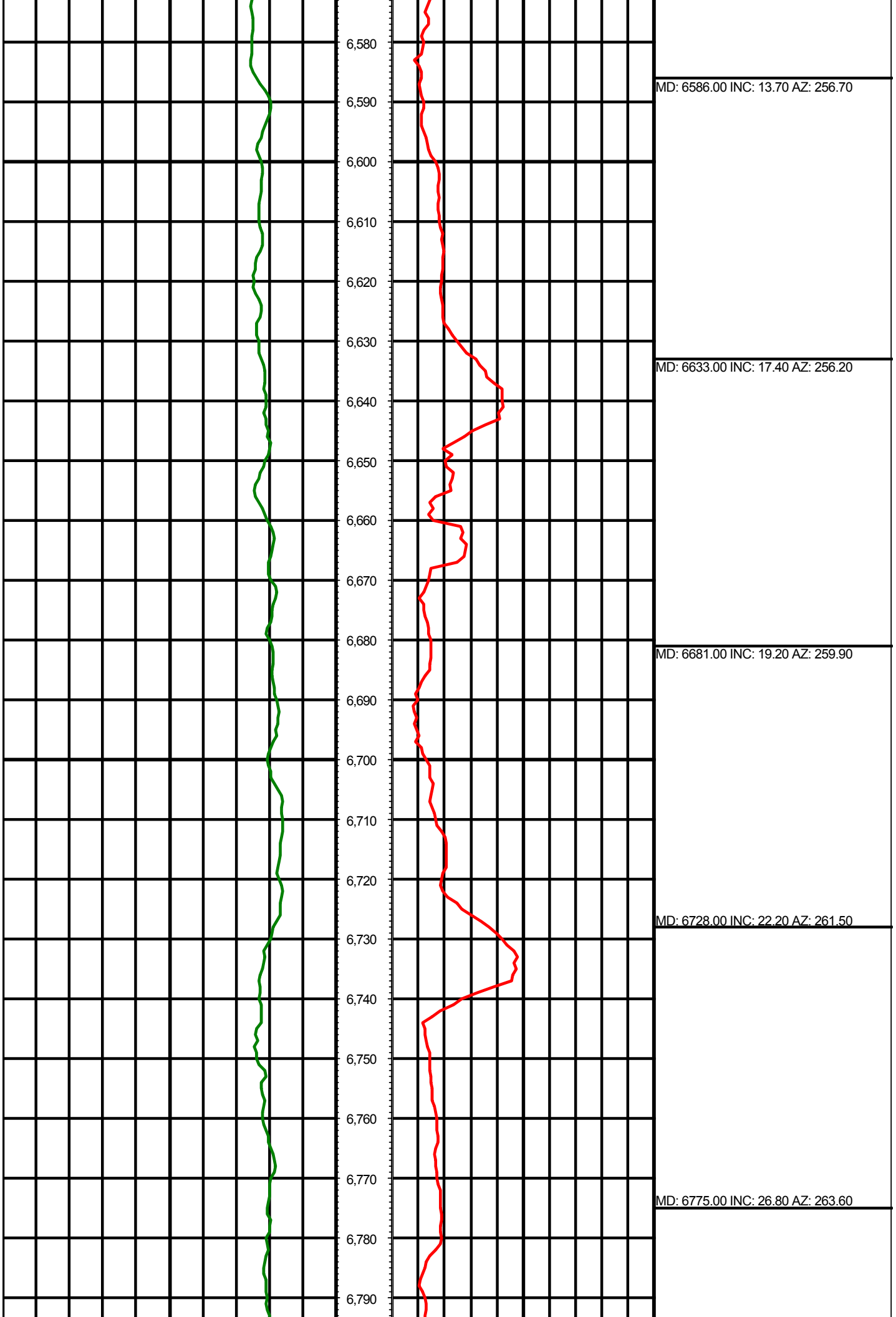
MD: 5782.00 INC: 7.80 AZ: 150.30

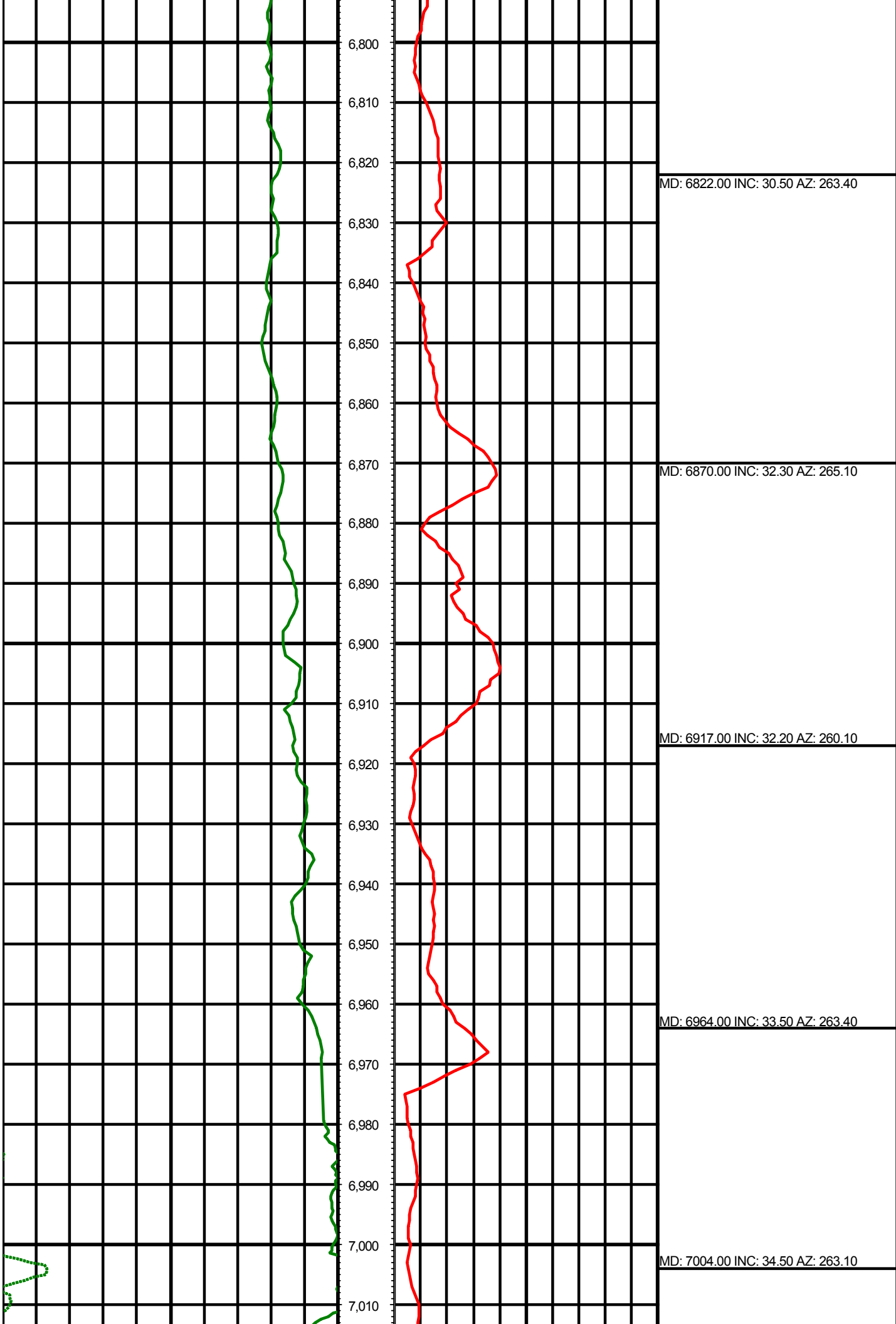
MD: 5876.00 INC: 8.80 AZ: 140.20

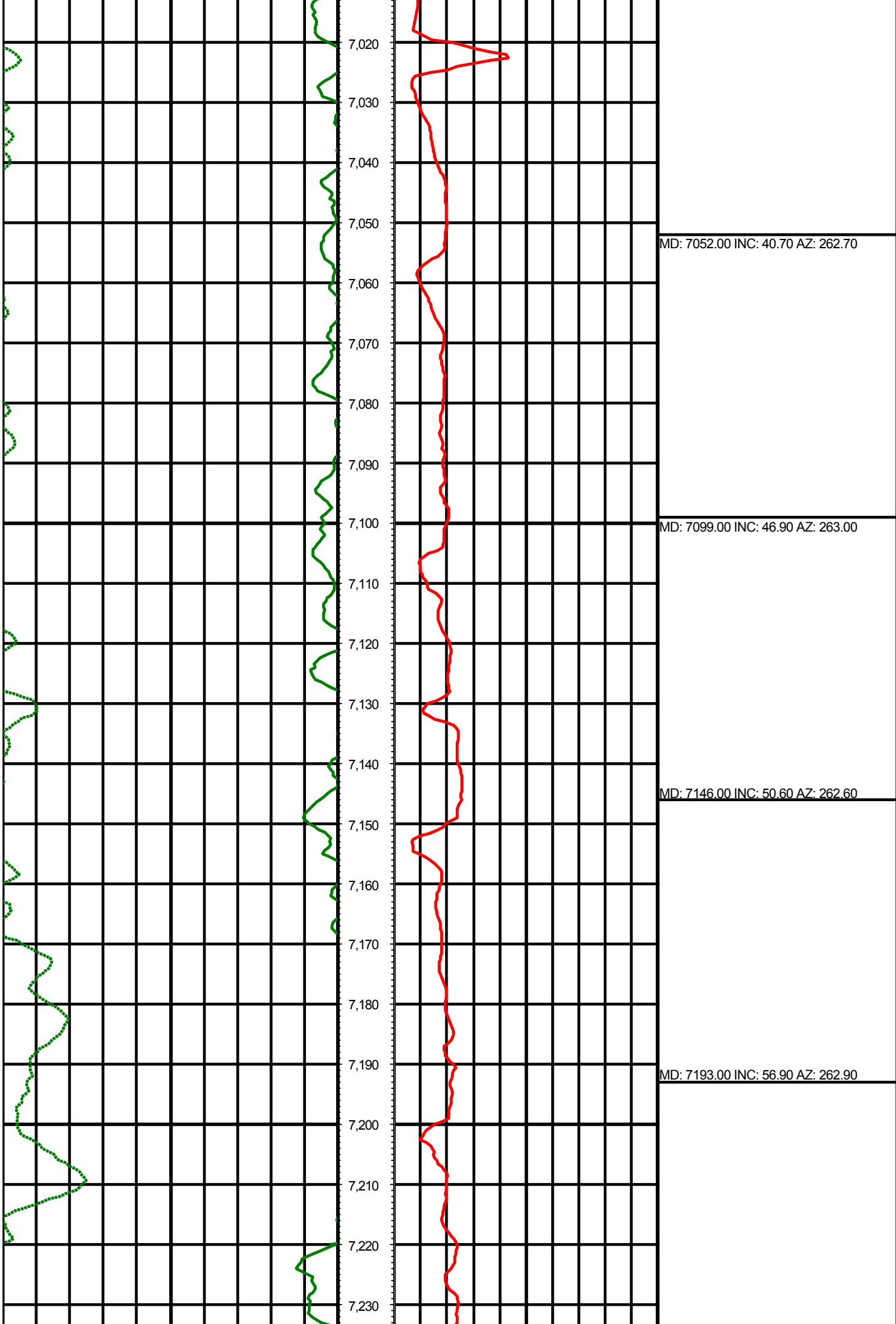


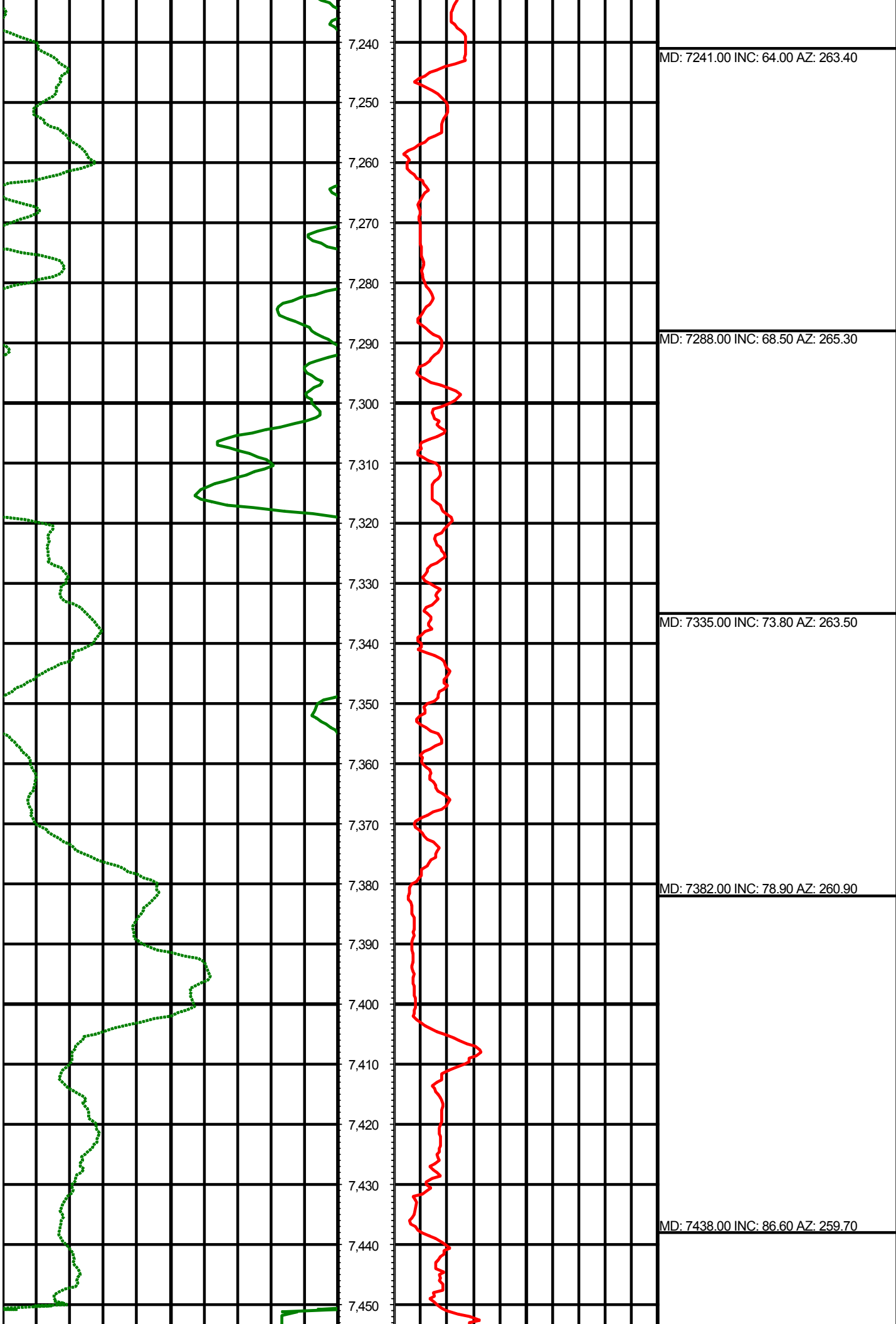












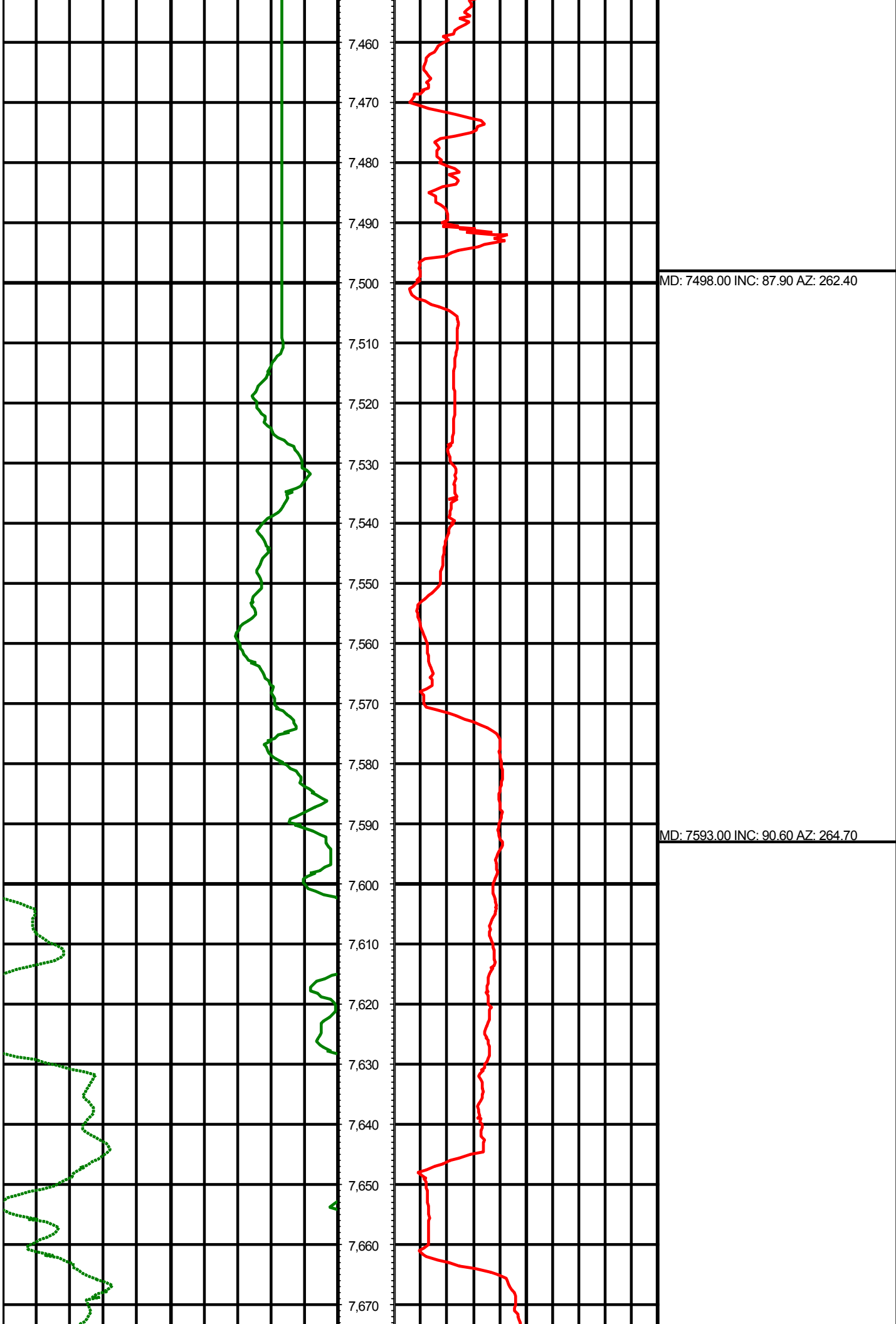
MD: 7241.00 INC: 64.00 AZ: 263.40

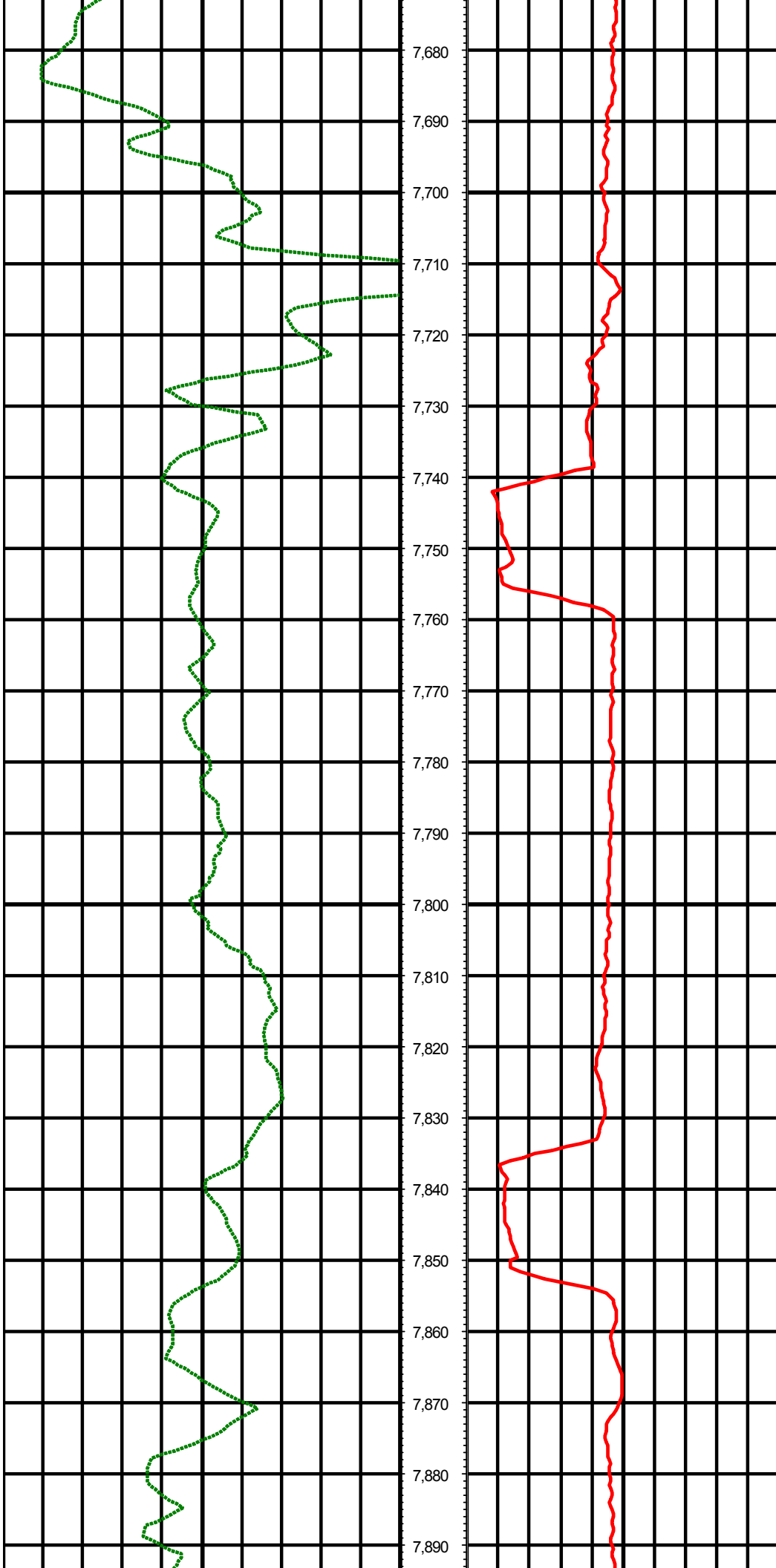
MD: 7288.00 INC: 68.50 AZ: 265.30

MD: 7335.00 INC: 73.80 AZ: 263.50

MD: 7382.00 INC: 78.90 AZ: 260.90

MD: 7438.00 INC: 86.60 AZ: 259.70

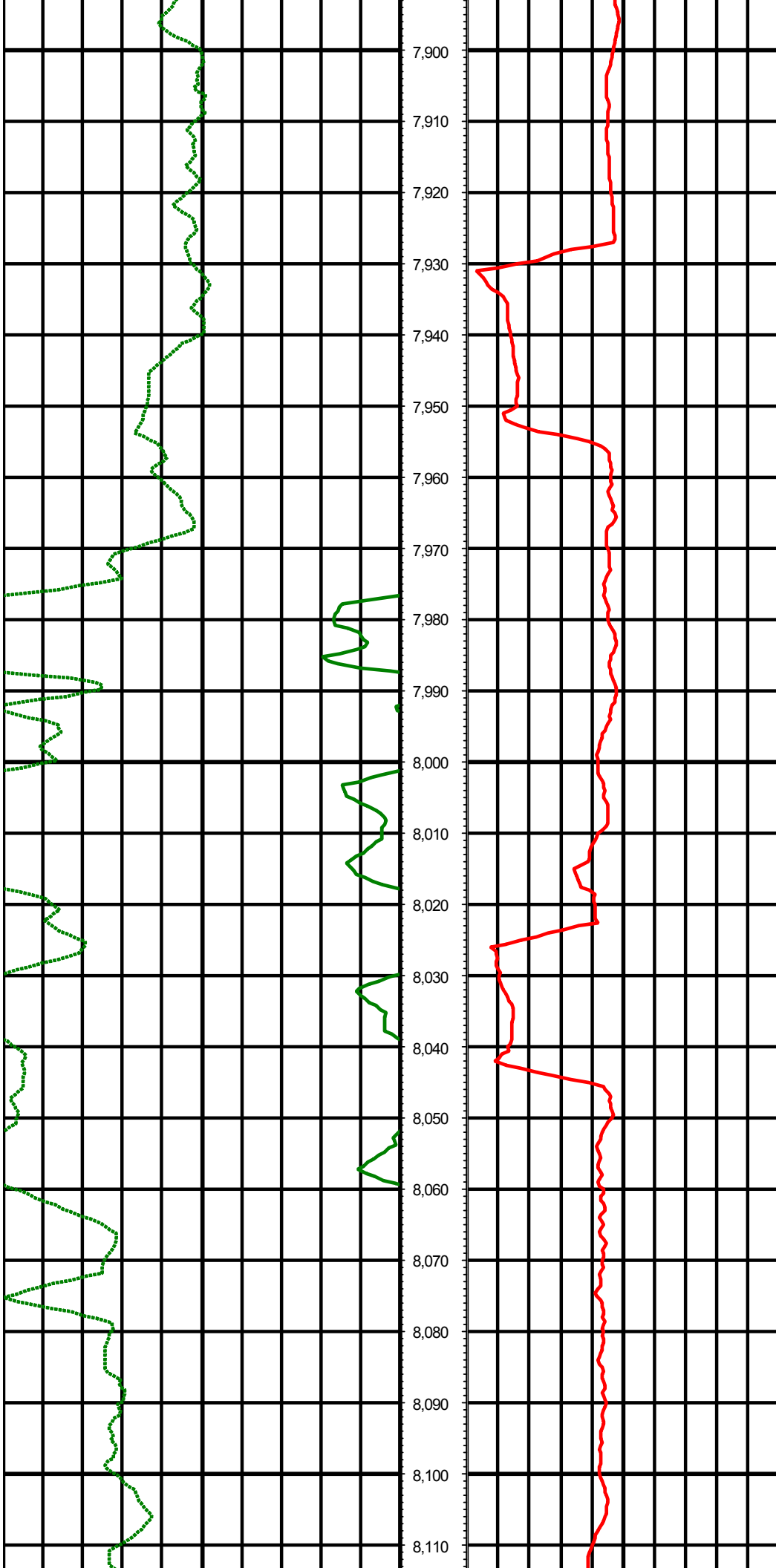




MD: 7687.00 INC: 93.50 AZ: 266.60

MD: 7782.00 INC: 94.00 AZ: 268.80

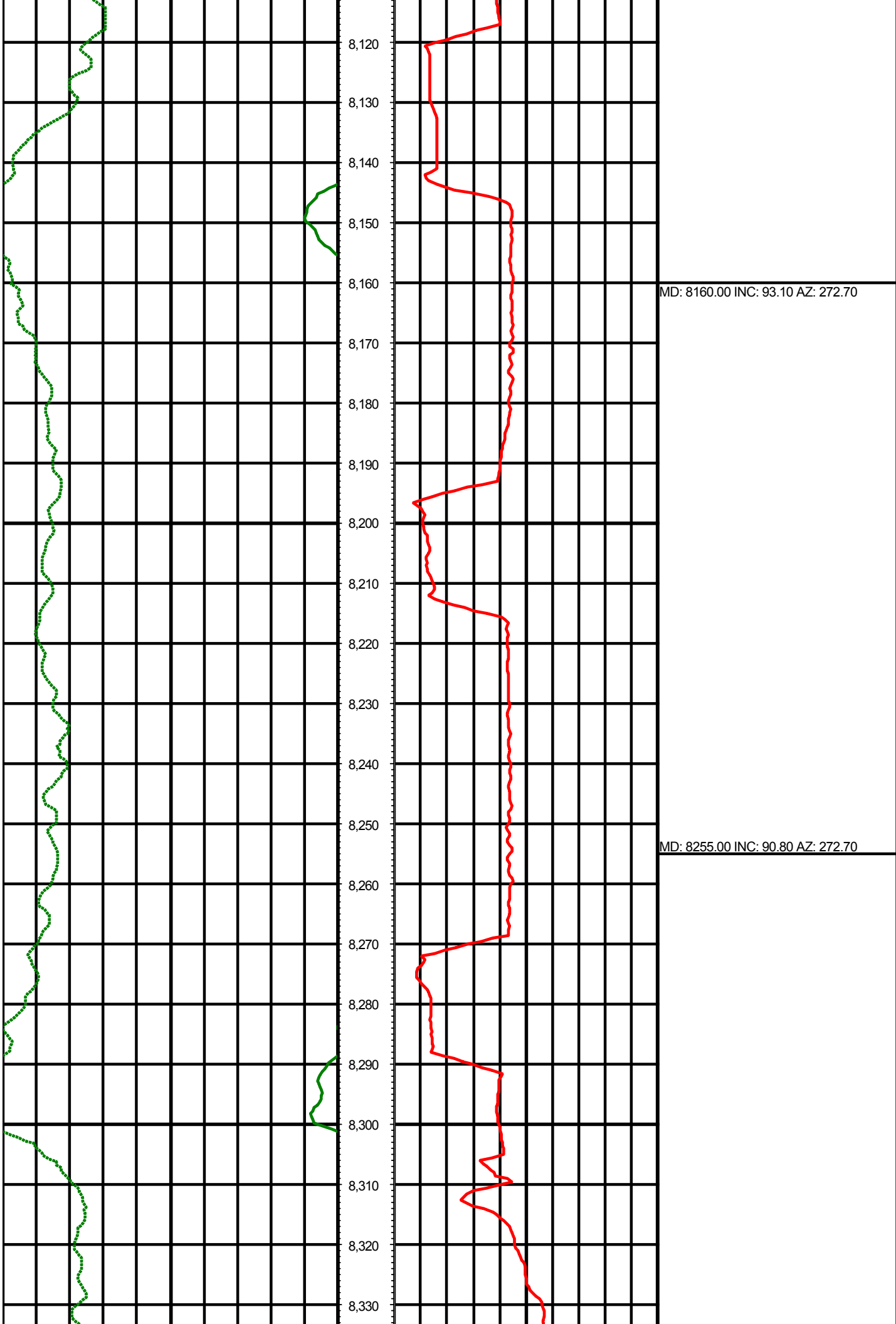
MD: 7877.00 INC: 94.10 AZ: 269.00

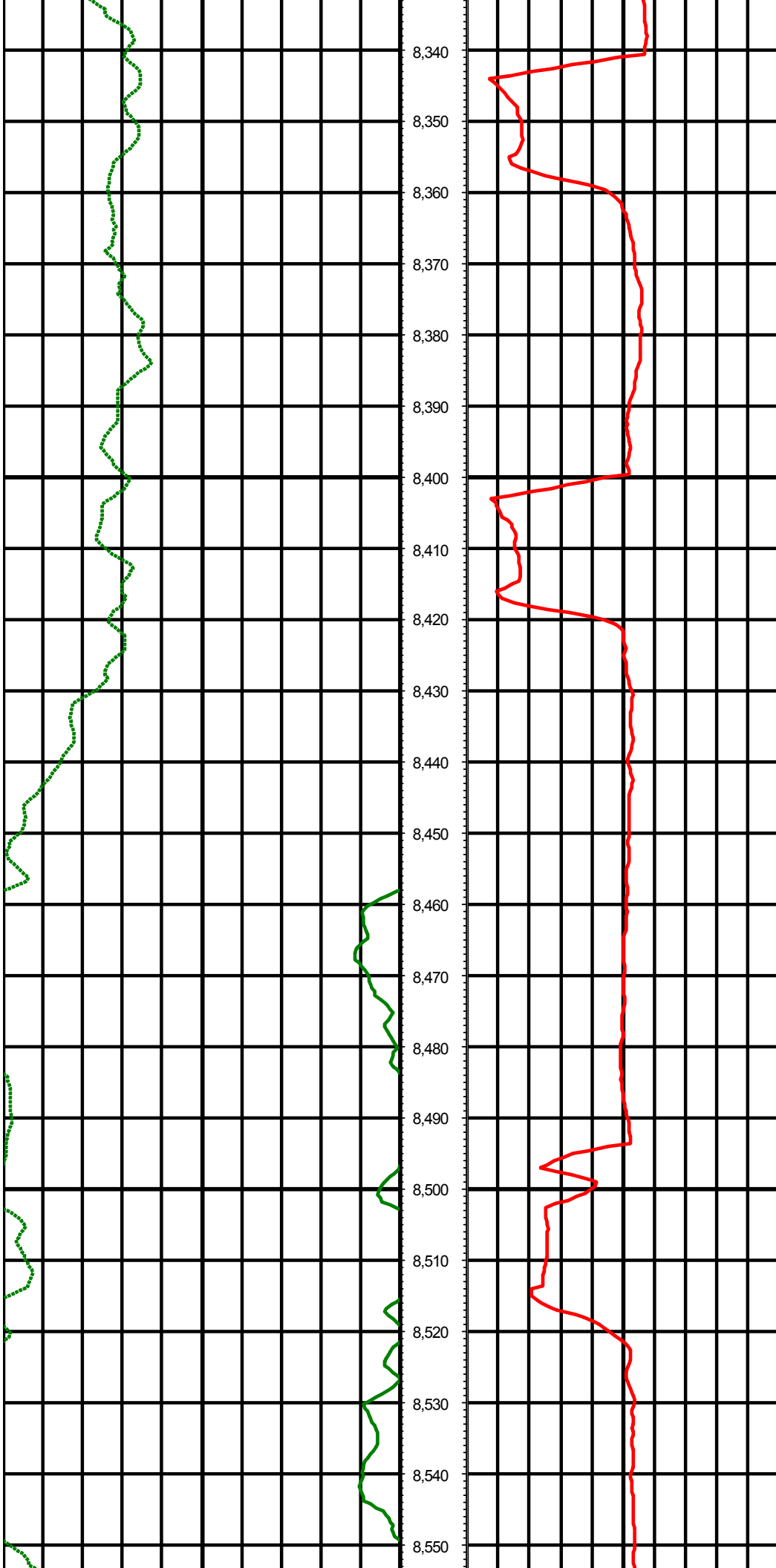


7,900  
7,910  
7,920  
7,930  
7,940  
7,950  
7,960  
7,970  
7,980  
7,990  
8,000  
8,010  
8,020  
8,030  
8,040  
8,050  
8,060  
8,070  
8,080  
8,090  
8,100  
8,110

MD: 7971.00 INC: 92.40 AZ: 269.40

MD: 8066.00 INC: 94.80 AZ: 272.00

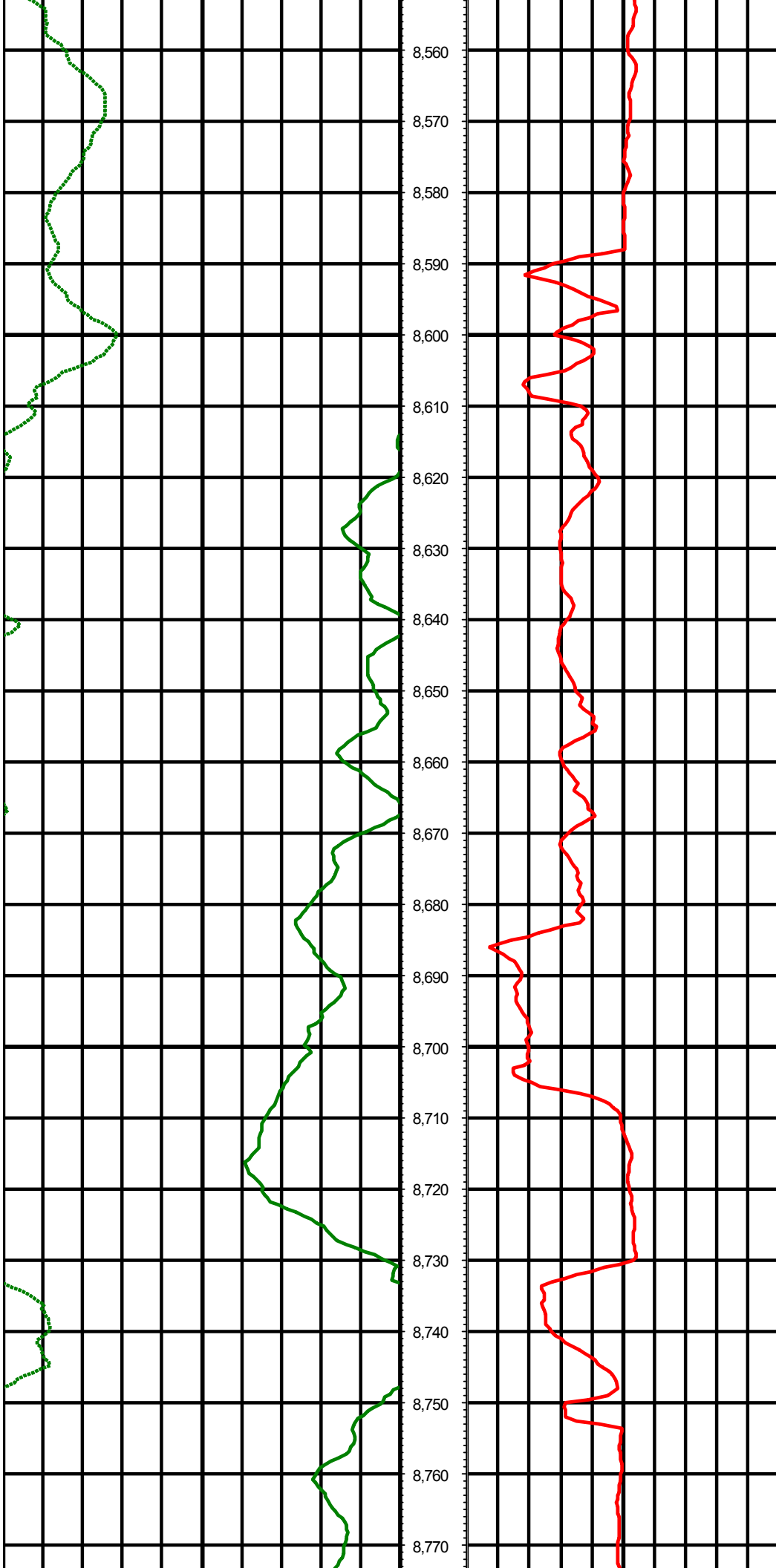




MD: 8349.00 INC: 88.70 AZ: 271.00

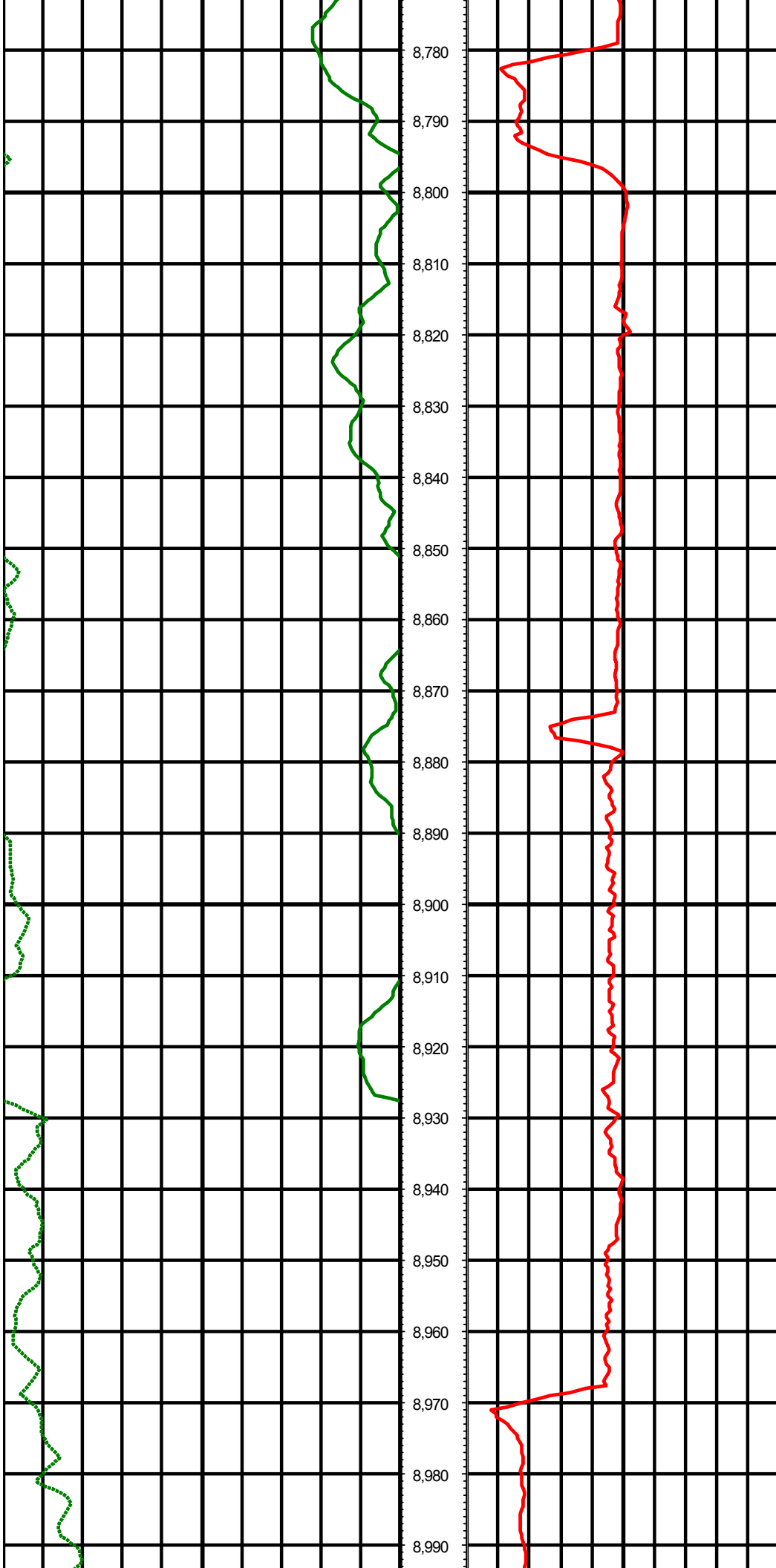
MD: 8444.00 INC: 90.70 AZ: 269.80

MD: 8539.00 INC: 90.20 AZ: 268.50



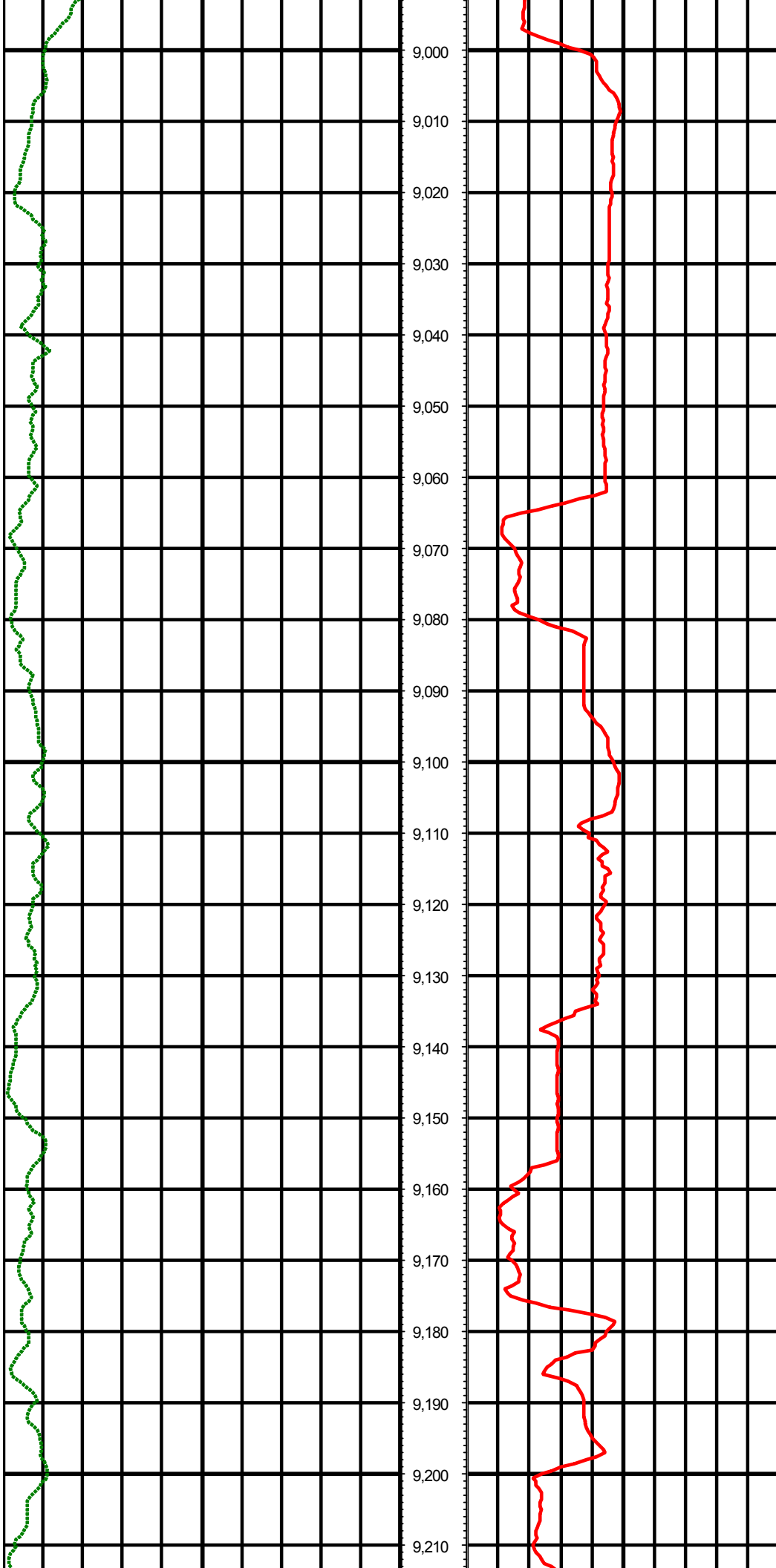
MD: 8633.00 INC: 89.10 AZ: 267.80

MD: 8728.00 INC: 88.90 AZ: 269.40



MD: 8822.00 INC: 89.40 AZ: 270.60

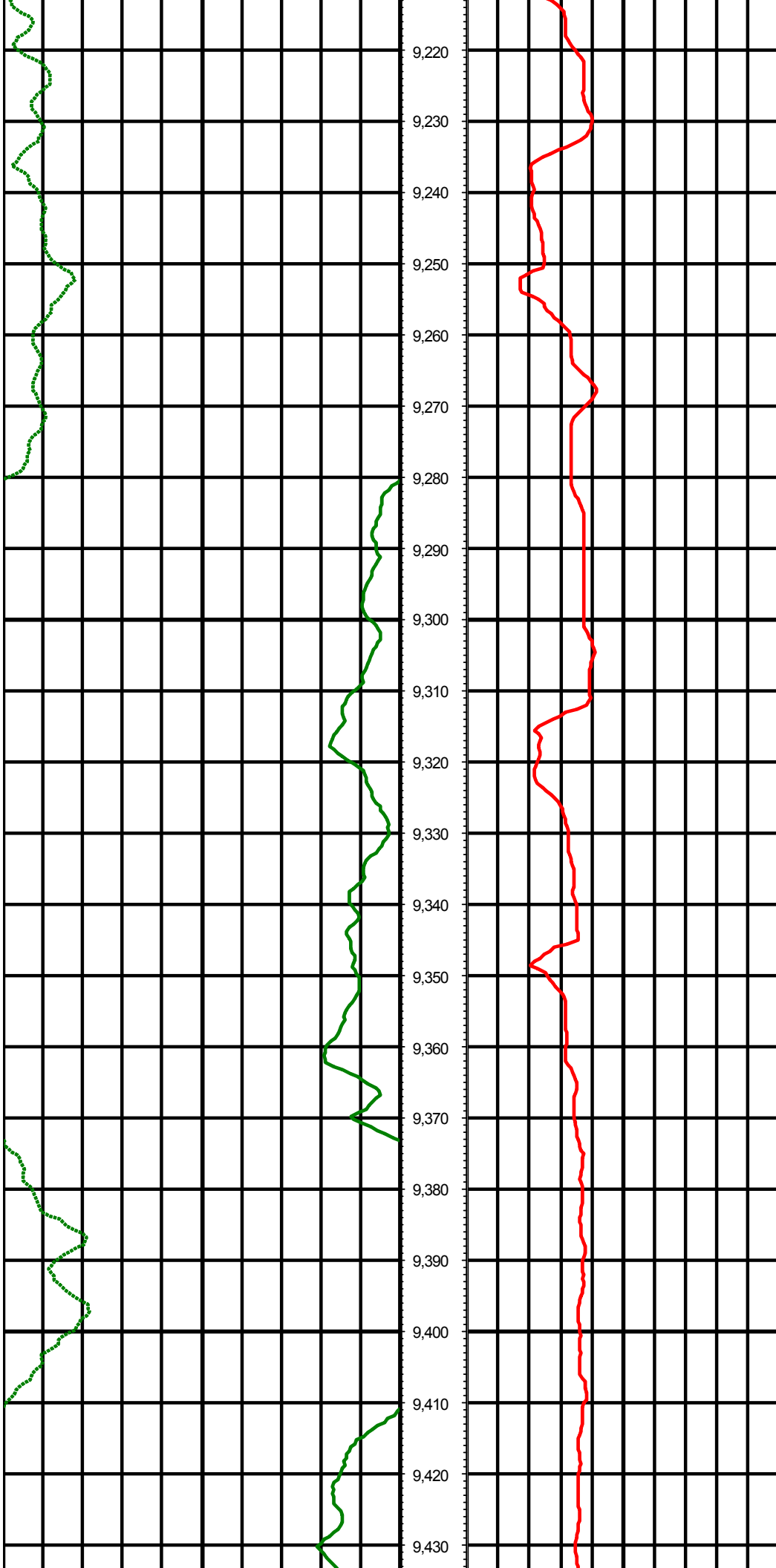
MD: 8917.00 INC: 88.30 AZ: 270.00



MD: 9012.00 INC: 91.90 AZ: 269.70

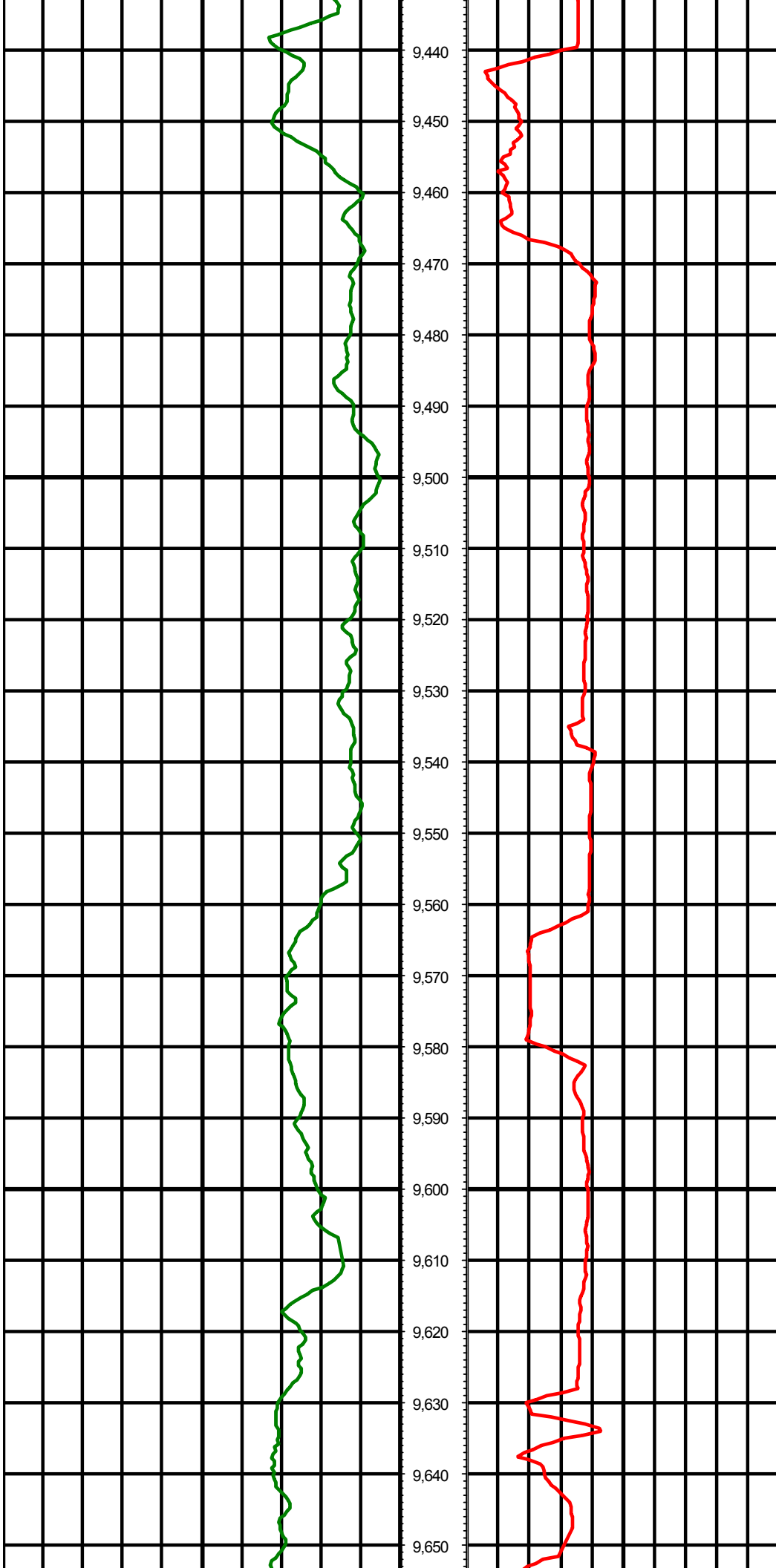
MD: 9106.00 INC: 92.70 AZ: 271.80

MD: 9201.00 INC: 90.20 AZ: 271.50



MD: 9295.00 INC: 90.30 AZ: 271.10

MD: 9390.00 INC: 89.10 AZ: 270.30



9,440  
9,450  
9,460  
9,470  
9,480  
9,490  
9,500  
9,510  
9,520  
9,530  
9,540  
9,550  
9,560  
9,570  
9,580  
9,590  
9,600  
9,610  
9,620  
9,630  
9,640  
9,650

MD: 9485.00 INC: 91.20 AZ: 270.60

MD: 9579.00 INC: 91.40 AZ: 270.60



9,660

9,670

9,680

9,690

9,700

9,710

9,720

9,730

9,740

9,750

9,760

9,770

9,780

9,790

9,800

9,810

9,820

9,830

9,840

9,850

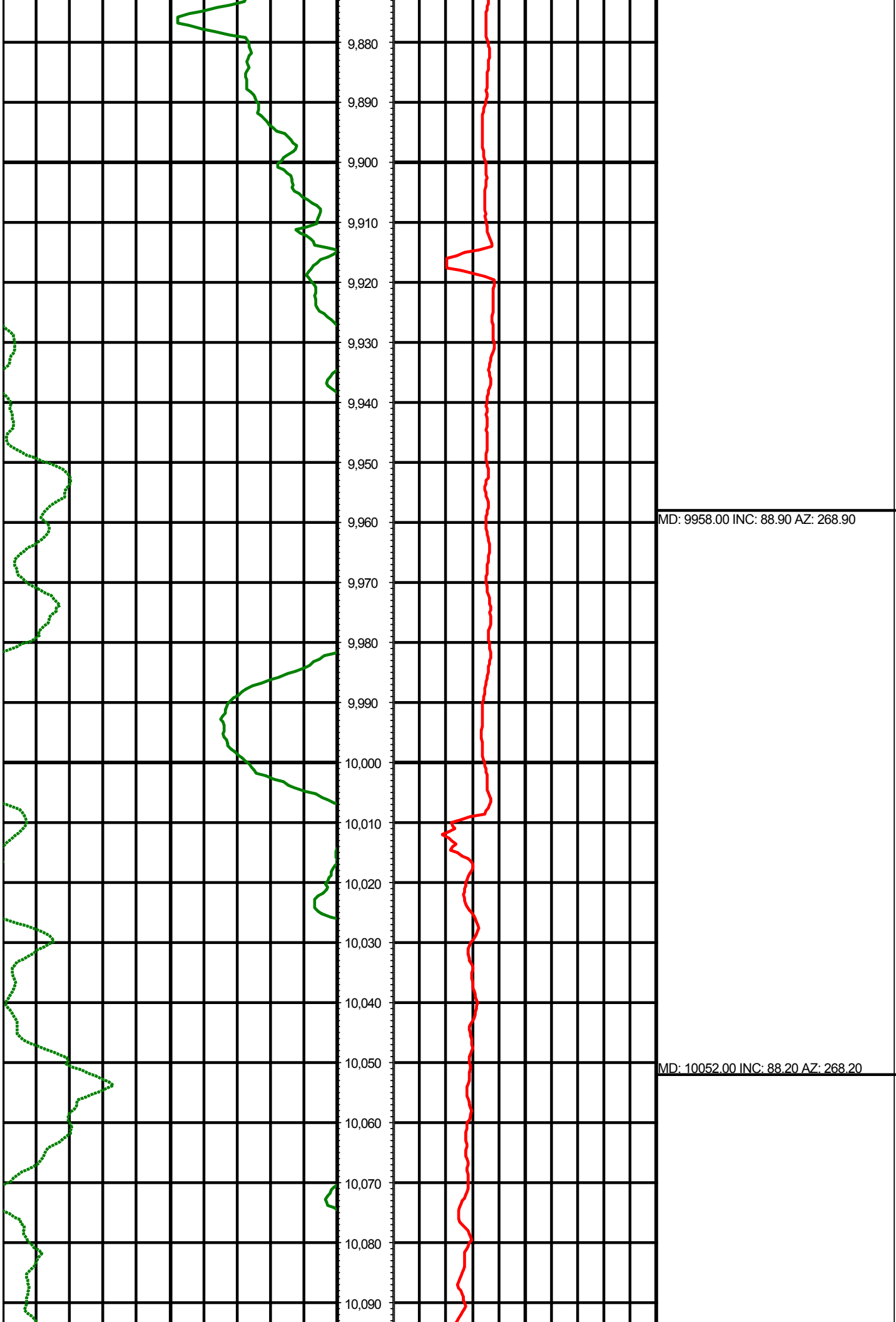
9,860

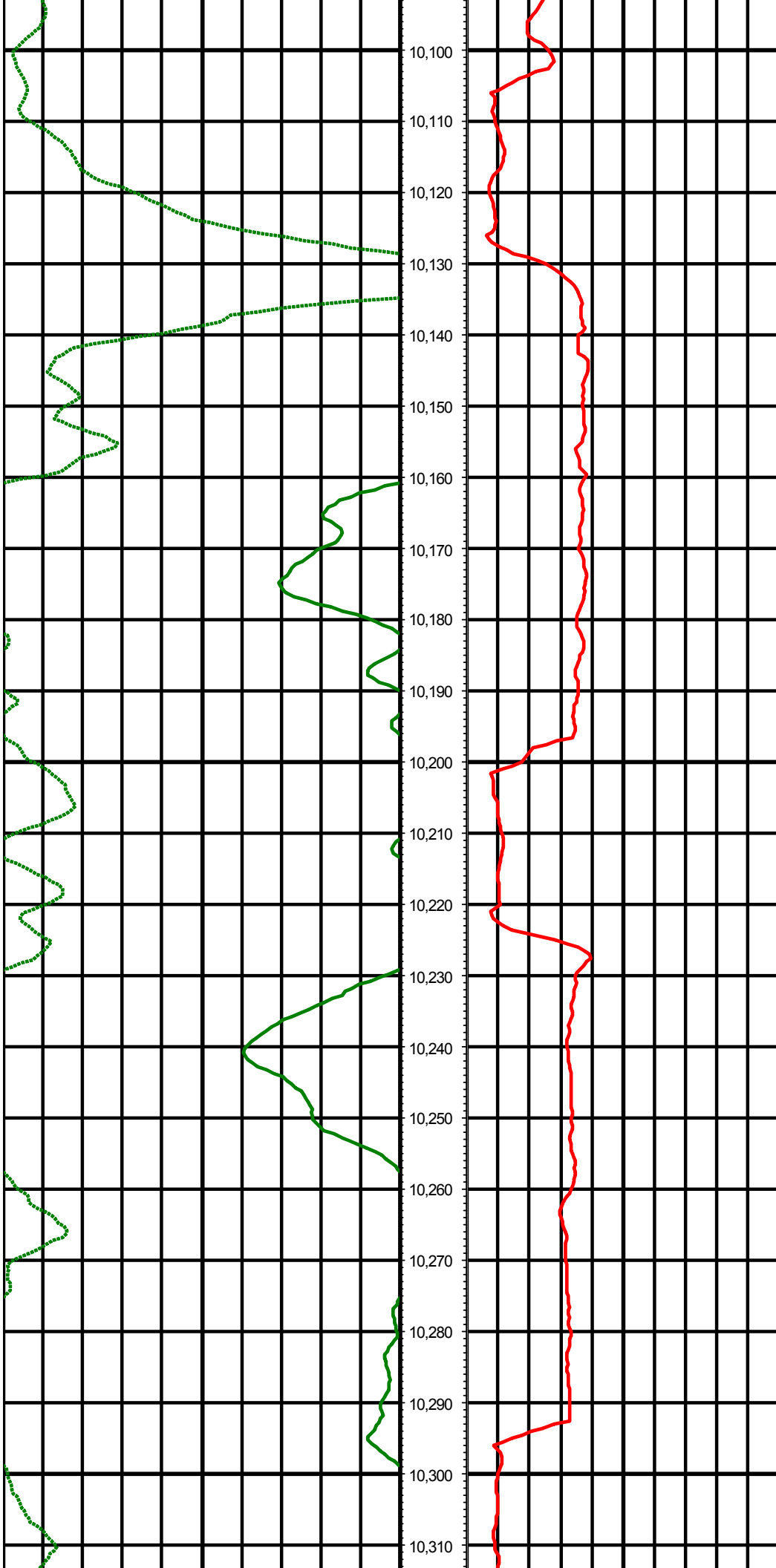
9,870

MD: 9674.00 INC: 92.20 AZ: 270.10

MD: 9768.00 INC: 90.10 AZ: 269.80

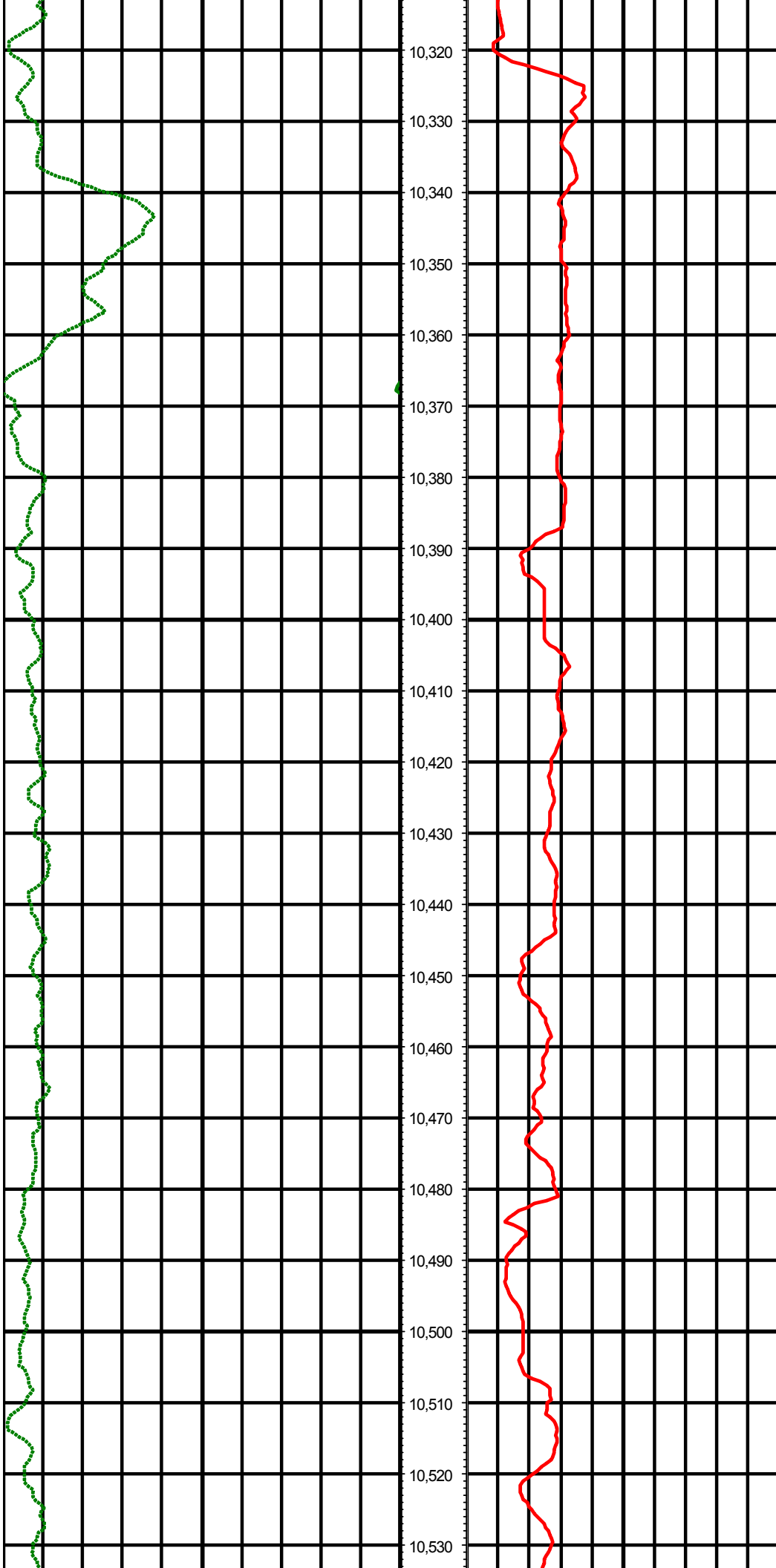
MD: 9863.00 INC: 90.10 AZ: 270.20





MD: 10146.00 INC: 89.90 AZ: 268.60

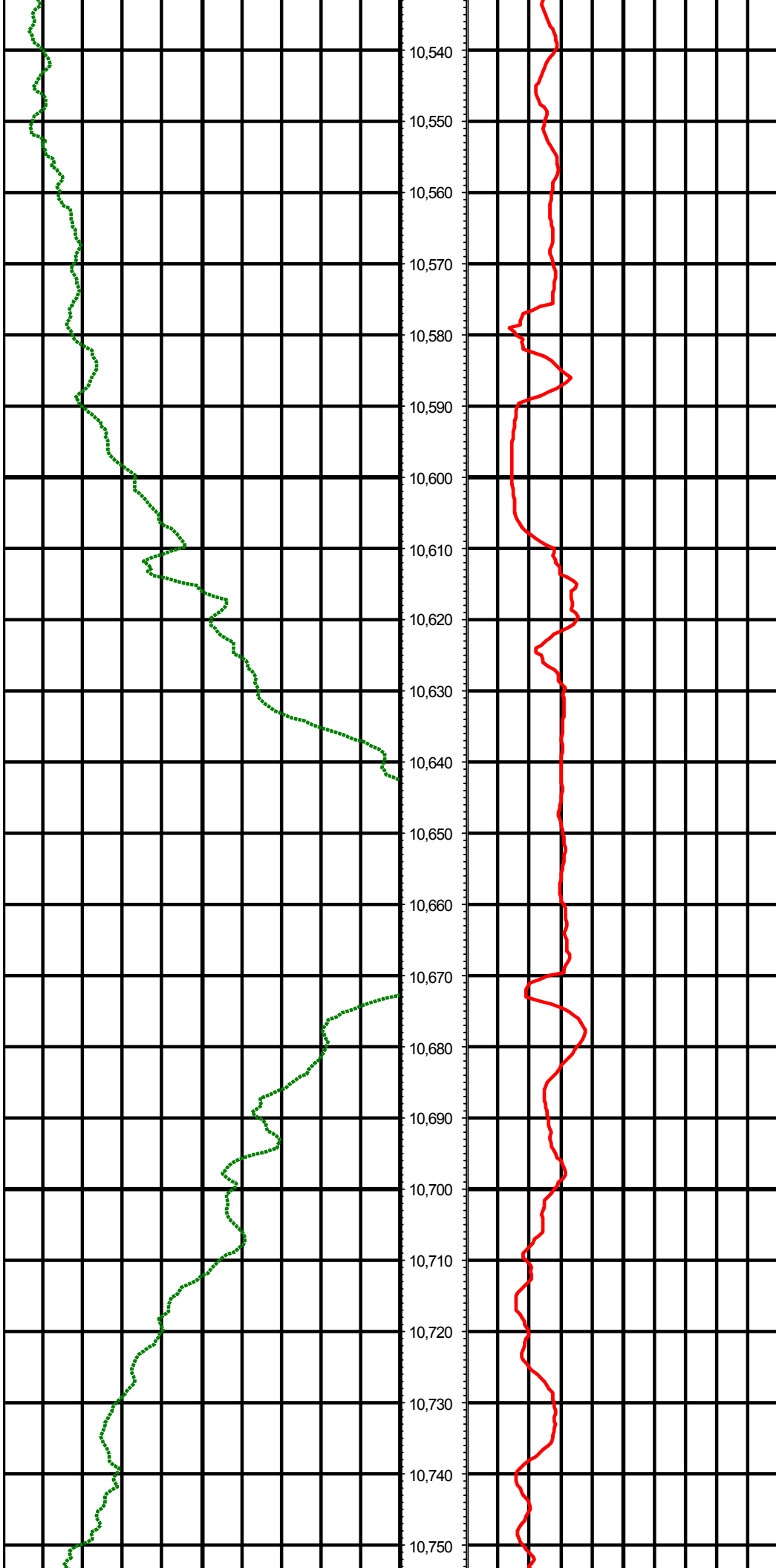
MD: 10241.00 INC: 90.40 AZ: 268.50



MD: 10336.00 INC: 89.90 AZ: 270.60

MD: 10430.00 INC: 90.80 AZ: 272.80

MD: 10525.00 INC: 90.10 AZ: 271.30



10,540  
10,550  
10,560  
10,570  
10,580  
10,590  
10,600  
10,610  
10,620  
10,630  
10,640  
10,650  
10,660  
10,670  
10,680  
10,690  
10,700  
10,710  
10,720  
10,730  
10,740  
10,750

MD: 10619.00 INC: 90.10 AZ: 271.00

MD: 10714.00 INC: 89.20 AZ: 269.80

