



Kerr-McGee Oil & Gas Onshore LP

A subsidiary of Anadarko Petroleum Corporation

1099 18th Street
Denver, CO 80202
720-929-6000

January 9, 2015

Matt Lepore
Director, Colorado Oil and Gas Conservation Commission
Department of Natural Resources
The Chancery Building
1120 Lincoln Street, Suite 801
Denver, CO 80203

Re: **30 Day Certification Letter - 318A.e**
BANE 27N1-9HZ (COGCC DOC# 400742845)
Township 1 North, Range 65 West
Section 9: SWSE
Unit Acreage: 320
Unit Spacing: 01N-65W-Sec 09 E2
Weld County, Colorado

Dear Director Lepore:

Kerr McGee Oil and Gas Onshore LP ("KMG") hereby certifies that KMG owns one hundred percent (100%) of the leasehold interest in the mineral rights in the proposed spacing unit. KMG hereby respectfully requests approval of this boundary well.

If you have any questions or issues regarding this permit, please contact Cheryl Light at (720) 929-6461.

Sincerely,

Kerr-McGee Oil and Gas Onshore LP

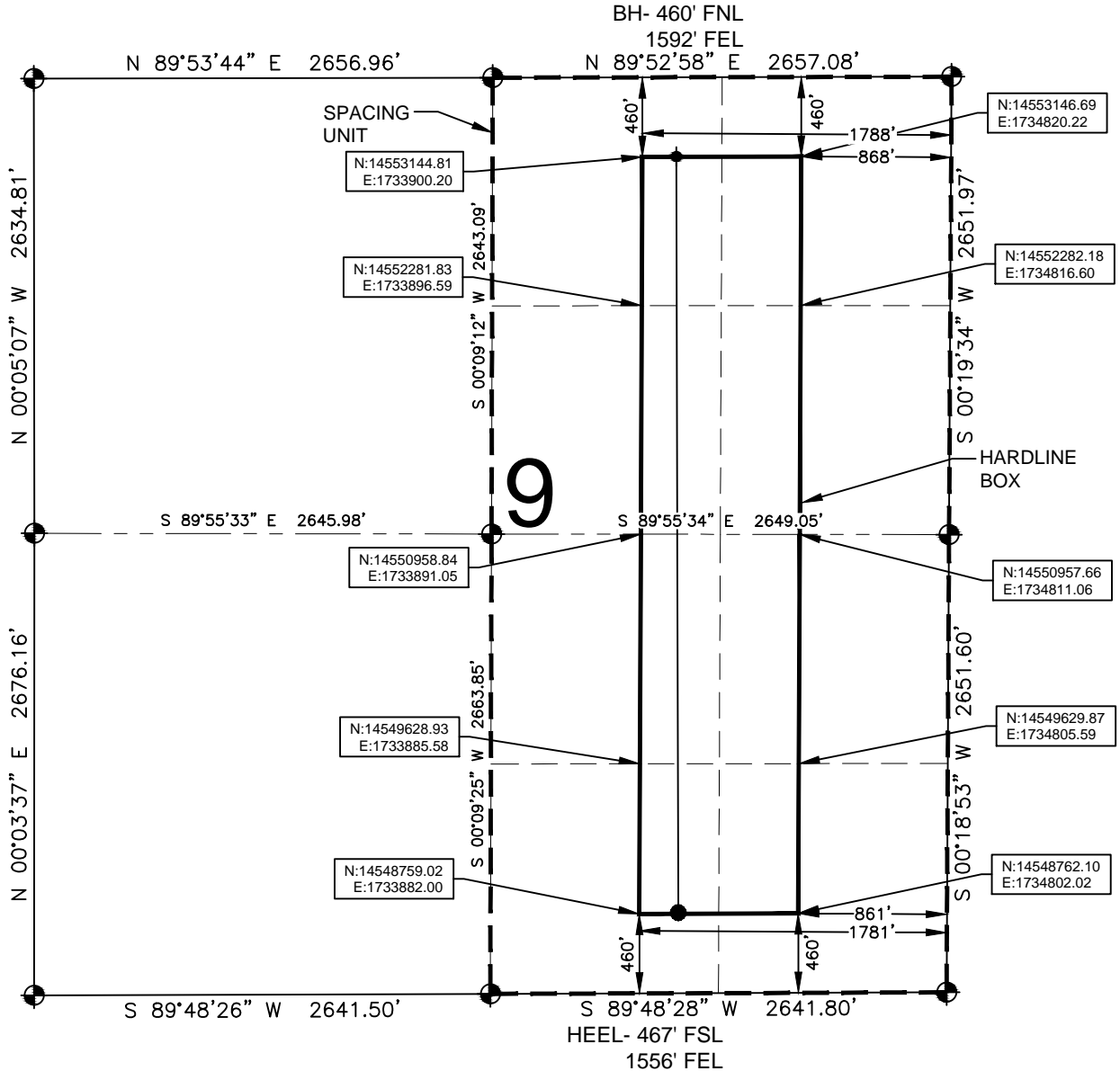
A blue ink signature of Craig Richardson, consisting of a stylized 'C' followed by a horizontal line.

Craig Richardson
Regulatory Analyst II

Enclosure

HARDLINE EXHIBIT: BANE 27N1-9HZ

SECTION 9 TOWNSHIP 1 NORTH, RANGE 65 WEST, 6TH P.M.



LEGEND

- = EXISTING MONUMENT ● = BOTTOM HOLE
● = PROPOSED HEEL BH = BOTTOM HOLE

HEEL LOCATION

NAD83
LATITUDE= 40.060024°
LONGITUDE= 104.665158°

LATITUDE= 40°03'36.085"
LONGITUDE= 104°39'54.567"

QRT/QRT SECTIONS WITHIN PATH OF THE HARDLINE

NWNE, SEC. 9	NENE, SEC. 9
SWNE, SEC. 9	SENE, SEC. 9
NWSE, SEC. 9	NESE, SEC. 9
SWSE, SEC. 9	SESE, SEC. 9

NOTES:

1. THIS DOCUMENT IS NOT A LAND SURVEY PLAT OR IMPROVEMENT SURVEY PLAT. THIS DOCUMENT DOES NOT REFLECT A FIELD SURVEY. SECTION BREAKDOWN, MONUMENTATION AND HORIZONTAL POSITIONS SHOWN ARE BASED ON THE HEEL AND BOTTOM HOLE LOCATION PROVIDED BY ANADARKO PETROLEUM CORPORATION

BOTTOM HOLE LOCATION

NAD83
LATITUDE= 40.072048°
LONGITUDE= 104.665138°

LATITUDE= 40°04'19.372"
LONGITUDE= 104°39'54.496"

AVAILABLE FOOTAGE

4385'



0 500 1000

SCALE: 1"= 1000'

PREPARED BY:



DRAWING DATE:	HEEL LOCATION:
11-12-14	SW 1/4 SE 1/4,
BY: SMF	SEC. 9, T1N, R65W, 6TH P.M.
CHECKED: TJN	WELD COUNTY, COLORADO