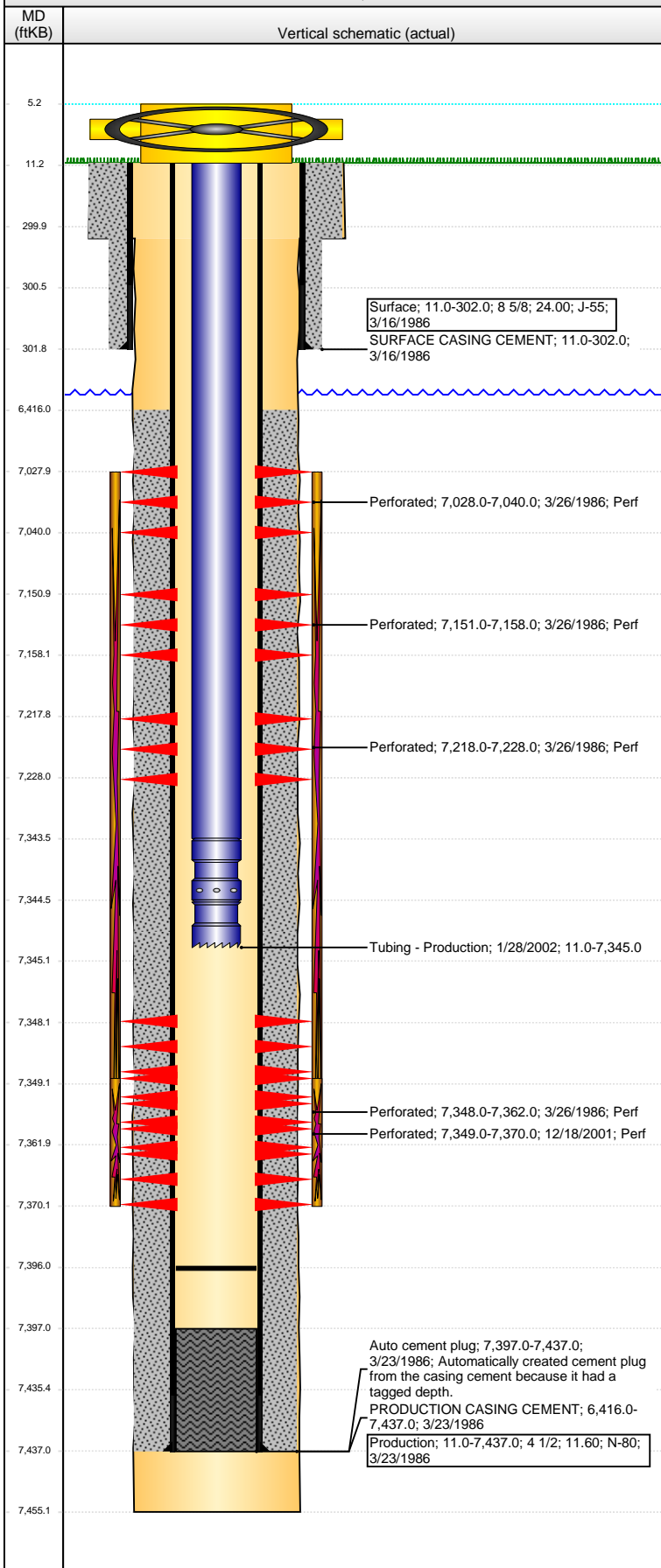


Well Name: STROH N35-09 (FKA 35-02)

VERTICAL - ORIGINAL HOLE, 1/13/2015 3:59:42 PM



Well Header

API	Business Unit	District	Well Config
05-123-13033	DJ BASIN	15	VERTICAL
Original KB Elevation (ft)	KB - GL / MSL (ftKB)	Spud Date	P & A Date
4,887.00	11.00	3/15/1986	

Comment

LIMITED INFORMATION IN WELL FILE.

Directions To Well

Congressional Location

Quarter 1	Quarter 2	Quarter 3	Quarter 4	Section	Township	Twnshp N...	Range	Rng E/W Dir
		NE	SE	35	5	N	67	W

Bottom Hole Location

North-South Distance (ft)	From N or S Line	East-West Distance (ft)	From E or W Line

Plug Back Total Depths

Date	Depth (ftKB)	Method	Com
3/23/1986	7,415.0	CASING TALLY	ORIGINAL PBTD
3/26/1986	7,384.0	CASED HOLE LOG	DEPTH LOGGER
1/28/2002	7,396.0	TAG	FILL

Wellbore Sections

Section Des	Size (in)	Act Top, MD (ftKB)	Act Btm, MD (ftKB)
SURFACE	12 1/4	11.0	300.0
PRODUCTION	7 7/8	300.0	7,455.0

Zone Statuses

Zone Name	Status Date	Status	Job
CODELL	4/18/1986	PR	DRILLING/COMPLETION - ORIGINAL, 3/15/1986 00:00
CODELL	1/3/2002	PR	RE-FRAC, 12/17/2001 00:00
NIOBRARA	4/18/1986	PR	DRILLING/COMPLETION - ORIGINAL, 3/15/1986 00:00

Casing Strings

Surface, 302.0ftKB

Casing Description	Run Date	OD (in)	Wt/Len (l...)	Grade	Top, MD (ft...)	MD (ftKB)
Surface	3/16/1986	8 5/8	24.00	J-55	11.0	302.0

Production, 7,437.0ftKB

Casing Description	Run Date	OD (in)	Wt/Len (l...)	Grade	Top, MD (ft...)	MD (ftKB)
Production	3/23/1986	4 1/2	11.60	N-80	11.0	7,437.0

Cement

Description	Top Depth (ftKB)	Bottom Depth (ftKB)
SURFACE CASING CEMENT	11.0	302.0
Description	Top Depth (ftKB)	Bottom Depth (ftKB)
PRODUCTION CASING CEMENT	6,416.0	7,437.0

Tubing Strings

Tubing Description	Run Date	String...	ID (in)	Wt (lb/ft)	Grade	Len (ft)	Set De...
Tubing - Production	1/28/2002	2 3/8	1.995	4.70	J-55	7,334.00	

Tubing Components

Item Des	OD (in)	Wt (lb/ft)	Grade	Jts	Len (ft)	Btm (ftKB)	Btm (TVD) (ftKB)
Tubing	2 3/8	4.70	J-55	232	7,332.50	7,343.5	
Seal Nipple	2 3/8			1	1.00	7,344.5	
Notched collar	2 3/8			1	0.50	7,345.0	

Perforation Data

Zone	Bnch/St g	Entered Shot Total	Top (ftKB)	Btm (ftKB)	Date
NIOBRARA, ORIGINAL HOLE	A	3	7,028.00	7,040.00	3/26/1986
NIOBRARA, ORIGINAL HOLE	B	3	7,151.00	7,158.00	3/26/1986
NIOBRARA, ORIGINAL HOLE	C	3	7,218.00	7,228.00	3/26/1986
CODELL, ORIGINAL HOLE		5	7,348.00	7,362.00	3/26/1986
CODELL, ORIGINAL HOLE		84	7,349.00	7,370.00	12/18/2001

Stimulations & Treatments

Date	Zone	Primary Job Type
3/29/1986	NIOBRARA-CODELL, ORIGINAL HOLE	DRILLING/COMPLETION - ORIGINAL
Technical Result	Tech Result Details	Tech Result Note

Comment

CODELL/NIOBRARA FRAC'D LIMITED ENTRY

Well Name: STROH N35-09 (FKA 35-02)

VERTICAL - ORIGINAL HOLE, 1/13/2015 3:59:44 PM

Stimulations & Treatments

Date 1/2/2002	Zone CODELL, ORIGINAL HOLE	Primary Job Type RE-FRAC
Technical Result	Tech Result Details	Tech Result Note

Comment
CODELL REFRAC

Other In Hole

Run Date	Des	OD (in)	Top (ftKB)	Btm (ftKB)

Logs

Date	Type	Top, MD (ftKB)	Btm, MD (ftKB)
3/21/1986	COMPENSATED DENSITY	4,659.0	7,420.0
3/21/1986	DIL/CD/CN	6,920.0	7,420.0
3/21/1986	INDUCTION	306.0	7,420.0
3/26/1986	CEMENT BOND	6,175.0	7,379.0
5/23/2014	GYRO	11.0	7,250.0

