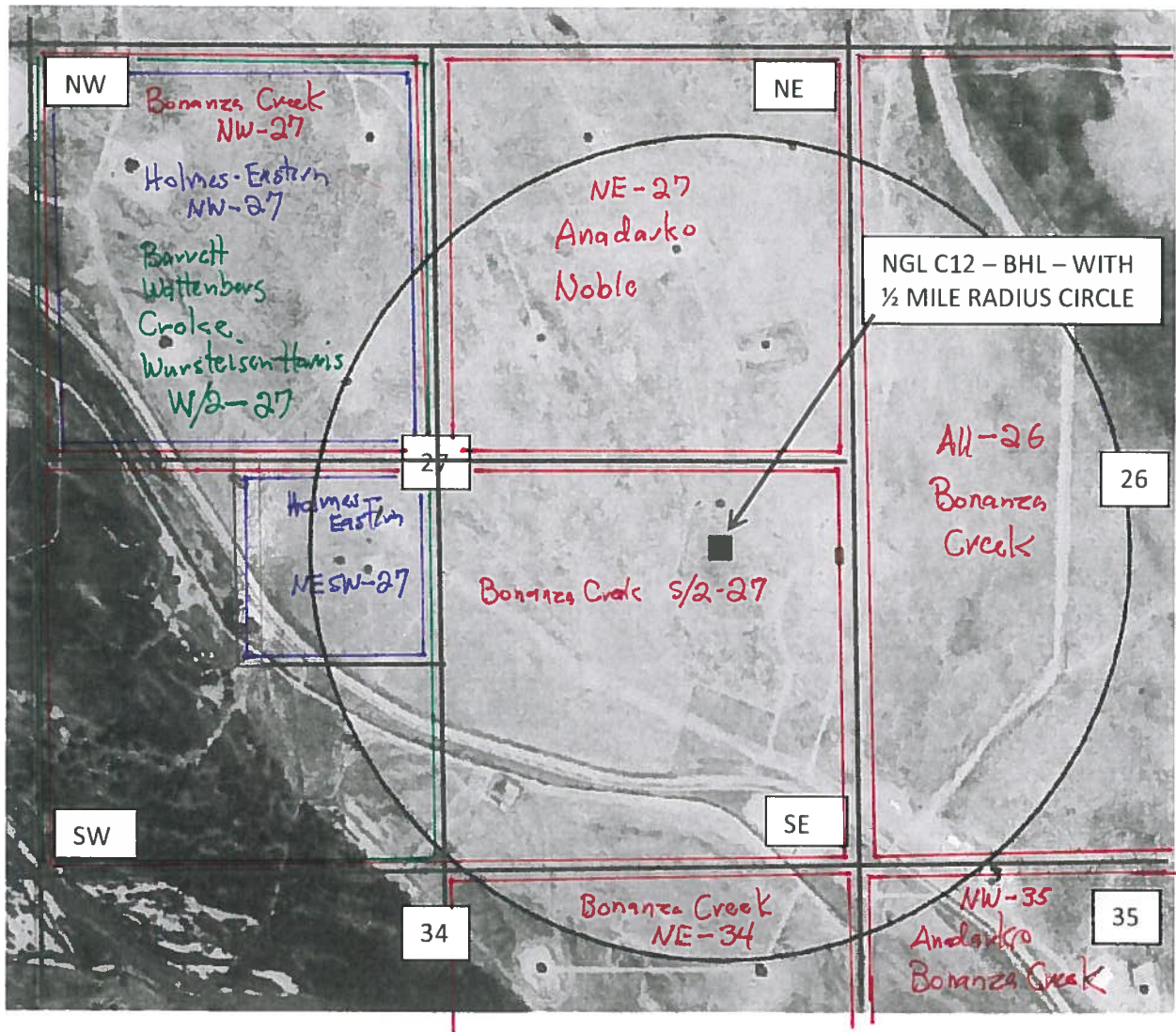


NGL C12 – MINERAL OWNERS MAP

SEC 27-T5N-R63W

1. Anadarko: Sec 35/NW/4; Sec. 27/NE/4
2. Bill Barrett, Jed Wattenberg, Croke Minerals, Wursteisen-Harris: Sec 27/W/2
3. Bonanza Creek: Sec 35/NW/4; Sec 26/All; Sec 27 S/2 & NW/4; Sec. 34/NE/4
4. Holmes Eastern: Sec 27/NW/4 & NE/SW/4
5. Noble Energy: Sec 27/NE/4

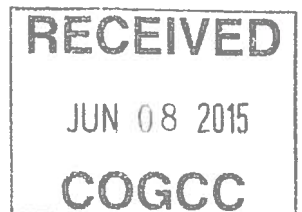
UPDATE
RECEIVED
JUNE 6, 2015
COGCC



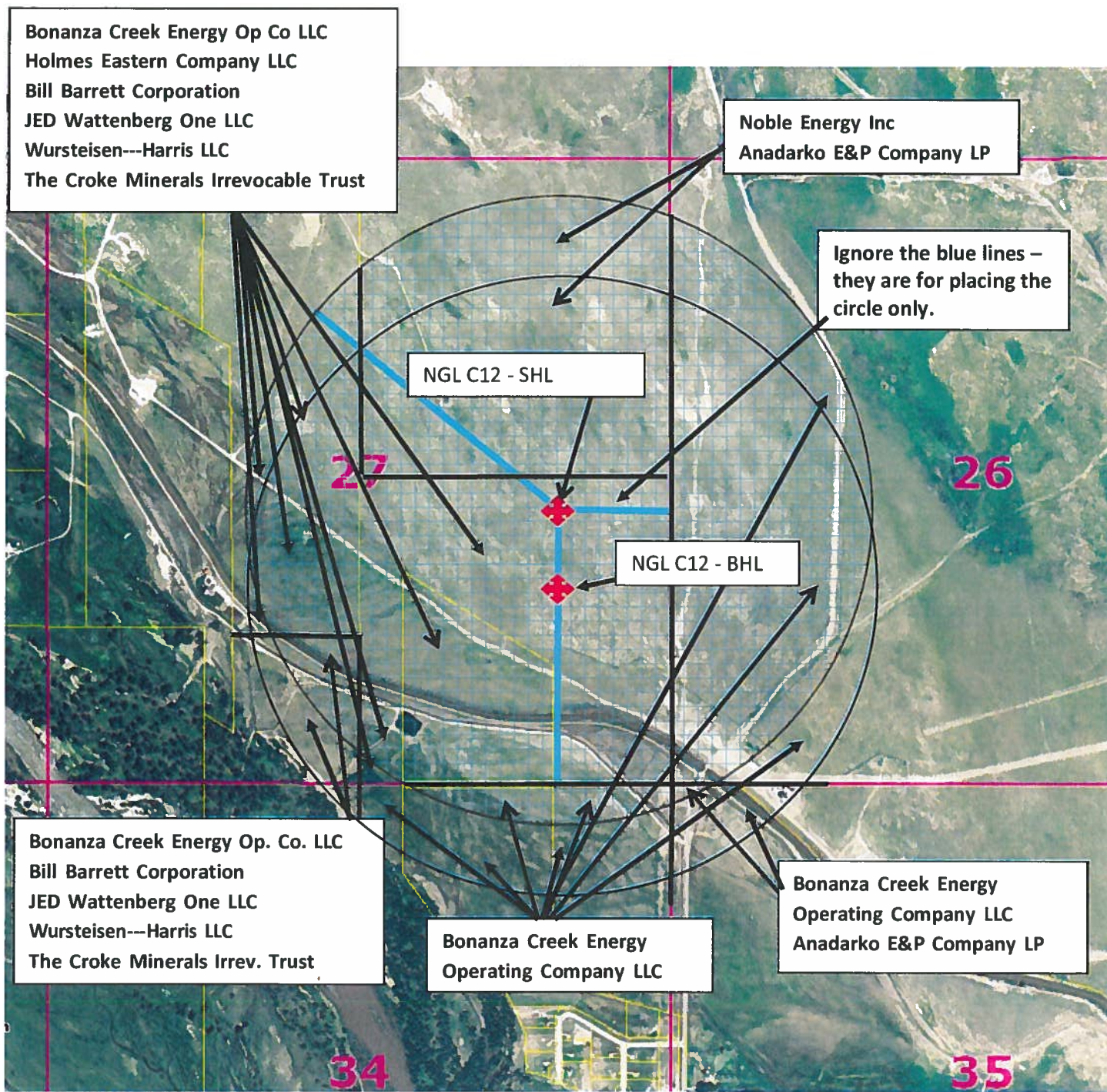
NGL C12 - MINERAL OWNERS MAP

SEC 27-T5N-R63W

1. Anadarko: ~~Sec 35/NW/4; Sec. 27/NE/4~~
2. Bill Barrett, Jed Wattenberg, Croke Minerals, Wursteisen-Harris: ~~Sec 27/W/2~~
3. Bonanza Creek: ~~Sec 35/NW/4; Sec 26/All; Sec 27 S/2 & NW/4; Sec. 34/NE/4~~
4. Holmes Eastern: ~~Sec 27/NW/4 & NE/SW/4~~
5. Noble Energy: ~~Sec 27/NE/4~~



OK
B.K.



NGL WATER SOLUTIONS DJ, LLC

NGL C12 - ½ MILE RADIUS - MINERAL OWNERS MAP – Sec. 27-T5N-R63W, SHL: 2312' FSL, 935' FEL;
 BHL: 2028' FSL, 934' FEL

NGL C12 – MINERAL OWNERS MAP

