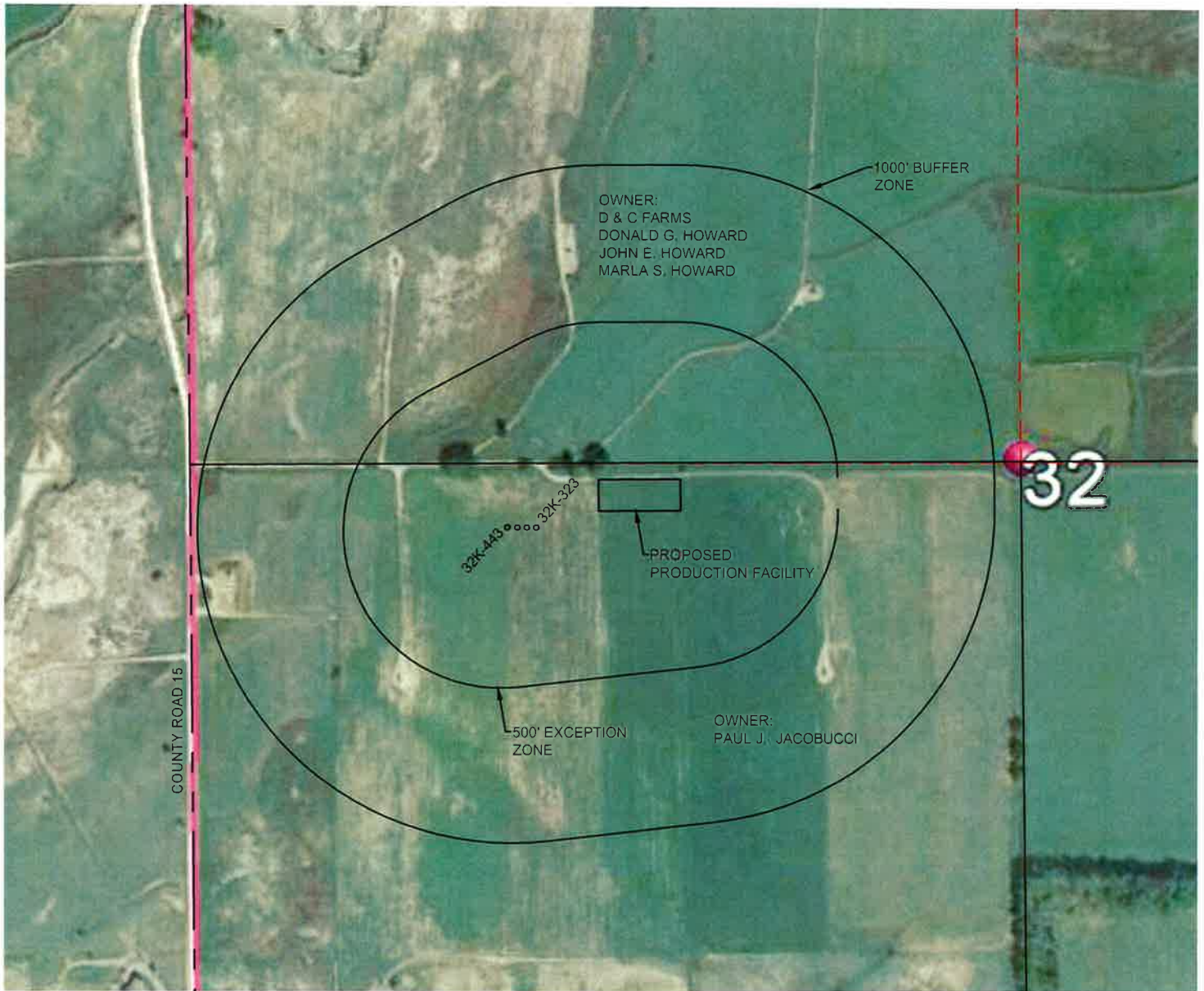


# NOTIFICATION ZONE DRAWING

## SECTION 32, TOWNSHIP 1 NORTH, RANGE 67 WEST, 6TH P.M.

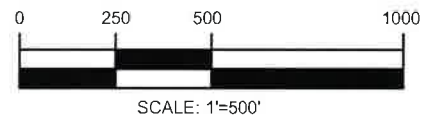


### LEGEND

- FOUND SECTION CORNER MONUMENT
- PROPOSED WELL

### NOTES:

1. 1000 FOOT NOTIFICATION ZONE SHOWN FROM THE END WELL LOCATION AND PROPOSED PRODUCTION FACILITIES PAD.
2. NO BUILDINGS ARE LOCATED WITHIN THE NOTIFICATION ZONE.



SURVEYING AND MAPPING LLC (SAM)  
555 Zang St., Suite 210  
Lakewood CO. 80228  
Ph: (303) 988-5852  
Fax: (303) 988-2195  
EMAIL: SAM@SAM.BIZ

PAD NAME: JACOBUCCI 1N67W32K

LOCATION:

SECTION 32, T1N, R67W, 6TH P.M.  
WELD COUNTY, COLORADO

EXHIBIT DATE 07/10/2014	SCALE: 1"=500'	PROJ. No. 34481	Dwg. No. JACOBUCCI.dwg
----------------------------	-------------------	--------------------	---------------------------

DRAWN BY: TWK	CHECKED BY: T. CARLSON	SHEET No. 1 OF 1
------------------	---------------------------	---------------------