

T4N, R68W

S 89°37'33" W 5296.62' (M)

NW. COR.
SEC. 26, T4N, R68W
FOUND 2 1/2" ALUM. CAP
L.S. NO. 24305

NE. COR.
SEC. 26, T4N, R68W
FOUND 2 1/2" ALUM. CAP
L.S. NO. 26969

SURFACE LOCATION
GROUND ELEVATION= 4996.7'
NAD 83
LATITUDE= 40.286197°
LONGITUDE= -104.962862°

LATITUDE= 40°17'10.307"
LONGITUDE= -104°57'46.302"

BOTTOM HOLE LOCATION
NAD 83
LATITUDE= 40.289800°
LONGITUDE= -104.943389°

LATITUDE= 40°17'23.280"
LONGITUDE= -104°56'36.200"

N 76°03'42" E 5589' GRID
N 76°24'31" E TRUE
N 67°49'42" E MAGNETIC

**WHISPER ROCK
1C-25HZ**
SURFACE LOCATION

26

S 89°24'32" W
2659.57' (C)

S 89°24'32" W
2643.55' (C)

N 00°13'16" W 5332.21' (M)

N 00°27'45" W
2656.03' (C)

N 00°27'45" W
2636.95' (C)

WELL BORE
CONTINUES INTO
SECTION 25

N 00°21'35" W 5292.04' (M)

S. 1/4 COR.
SEC. 26, T4N, R68W
FOUND 2 1/2" ALUM. CAP
L.S. NO. 38345

MATCH LINE
SEE SHEET 2

SW. COR.
SEC. 26, T4N, R68W
FOUND 3 1/4" ALUM. CAP
L.S. NO. 7242

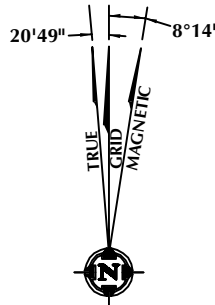
S 88°47'05" W 2671.03' (M)

S 89°36'20" W 2638.80' (M)

SE. COR.
SEC. 26, T4N, R68W
FOUND 3 1/4" ALUM. CAP
L.S. NO. 12374

NOTES:

- ▲ INDICATES FOUND SECTION CORNER
- INDICATES CALCULATED CORNER
- ELEVATION BASED ON NAVD88 (GEOID09)
- BASIS OF BEARING DERIVED FROM COLORADO COORDINATE SYSTEM 1983 NORTH ZONE UNLESS OTHERWISE NOTED.
- ALL MEASURED DISTANCES ARE GRID.
COMBINED SCALE FACTOR: .99971841
- OPERATOR: ROB WILSON / PDOP = 1.2
- SEE ADDENDUM TO WELL LOCATION CERTIFICATE FOR EXISTING IMPROVEMENTS WITHIN 500' OF THE WELL PAD.
- WELL FOOTAGES ARE MEASURED AT RIGHT ANGLES TO THE SECTION LINES.
- THE BOTTOM OF HOLE BEARS N76°03'42"E 5589' FROM THE SURFACE LOCATION.



NOTE:
MAGNETIC NORTH IS CURRENT AS OF 4/25/2014.
MAGNETIC NORTH CHANGES WEST 0°08' PER YEAR.



CERTIFICATE OF SURVEYOR:

THIS IS TO CERTIFY THAT THE ABOVE PLAT WAS PREPARED FROM FIELD NOTES OF ACTUAL SURVEY MADE BY ME OR UNDER MY SUPERVISION AND THAT THE SAME ARE TRUE AND CORRECT TO THE BEST OF MY KNOWLEDGE AND BELIEF. THIS CERTIFICATE DOES NOT REPRESENT A LAND SURVEY PLAT OR IMPROVEMENT SURVEY PLAT AS DEFINED BY C.S. 38-51-102 AND CANNOT BE RELIED UPON TO DETERMINE OWNERSHIP.

Benjamin J. Reenders
PROFESSIONAL LAND SURVEYOR
12/17/14

BENJAMIN J. REENDERS
PROFESSIONAL LAND SURVEYOR
COLORADO REGISTRATION NUMBER 4836

NOTICE:
ACCORDING TO COLORADO STATE LAW YOU MUST COMMENCE ANY LEGAL ACTION BASED UPON ANY DEFECT IN THIS SURVEY WITHIN THREE YEARS AFTER YOU FIRST DISCOVER SUCH DEFECT. IN NO EVENT MAY ANY ACTION BASED UPON ANY DEFECT IN THIS SURVEY BE COMMENCED MORE THAN TEN YEARS FROM THE DATE ON THE CERTIFICATION SHOWN HEREON.

WELL PAD - WILSON RANCH 5C-27HZ

WHISPER ROCK 1C-25HZ
WELL LOCATION CERTIFICATE
2080' FNL & 598' FEL SENE (SURFACE)
LOCATED IN SECTION 26
806' FNL & 460' FEL NENE (BOTTOM)
LOCATED IN SECTION 25
T4N, R68W, 6TH P.M.
WELD COUNTY, COLORADO

**Kerr-McGee Oil &
Gas Onshore L.P.**
1099 18th Street
Denver, Colorado 80202



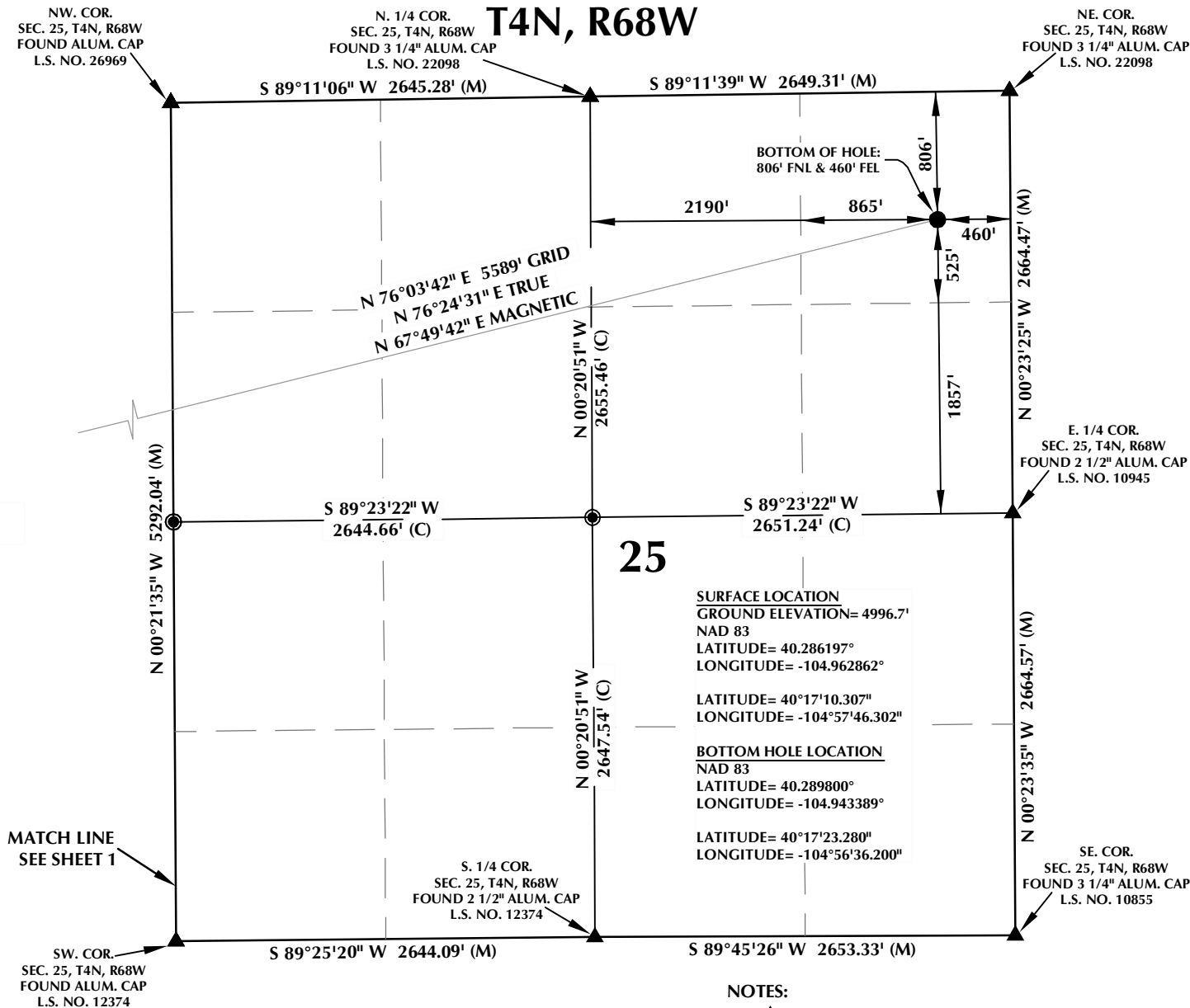
CONSULTING, LLC

SHERIDAN OFFICE
2155 North Main Street
Sheridan, Wyoming 82801
Phone 307-674-0609

LOVELAND OFFICE
1635 Foxtrail Drive, Suite 204
Loveland, Colorado 80538
Phone 970-776-4331

DRAFTED BY:	LMO	CHECKED BY:	BJR	SHEET NO:
DATE DRAFTED:	9/17/14	DATE SURVEYED:	4/23/14	1
REVISED:	12/17/14	FILE NAME:	14-19	1 OF 2

K:\ADARKO\2014\19_COLORADO_T4N_R68W_SEC_26 & SEC_27\PLANS\WILSON RANCH 5C-27HZ.dwg, 12/19/2014 8:02:48 AM, Jake



CERTIFICATE OF SURVEYOR:

THIS IS TO CERTIFY THAT THE ABOVE PLAT WAS PREPARED FROM FIELD NOTES OF ACTUAL SURVEY MADE BY ME OR UNDER MY SUPERVISION AND THAT THE SAME ARE TRUE AND CORRECT TO THE BEST OF MY KNOWLEDGE AND BELIEF. THIS CERTIFICATE DOES NOT REPRESENT A LAND SURVEY PLAT OR IMPROVEMENT SURVEY PLAT AS DEFINED BY C.S. 38-51-102 AND CANNOT BE RELIED UPON TO DETERMINE OWNERSHIP.

Benjamin J. Reenders

BENJAMIN J. REENDERS
PROFESSIONAL LAND SURVEYOR
COLORADO REGISTRATION NUMBER 18305

NOTICE:
ACCORDING TO COLORADO STATE LAW YOU MUST COMMENCE ANY LEGAL ACTION BASED UPON ANY DEFECT IN THIS SURVEY WITHIN THREE YEARS AFTER YOU FIRST DISCOVER SUCH DEFECT. IN NO EVENT MAY ANY ACTION BASED UPON ANY DEFECT IN THIS SURVEY BE COMMENCED MORE THAN TEN YEARS FROM THE DATE ON THE CERTIFICATION SHOWN HEREON.

WELL PAD - WILSON RANCH 5C-27HZ

WHISPER ROCK 1C-25HZ
WELL LOCATION CERTIFICATE
2080' FNL & 598' FEL SENE (SURFACE)
LOCATED IN SECTION 26
806' FNL & 460' FEL NENE (BOTTOM)
LOCATED IN SECTION 25
T4N, R68W, 6TH P.M.
WELD COUNTY, COLORADO

**Kerr-McGee Oil &
Gas Onshore L.P.**

1099 18th Street
Denver, Colorado 80202



CONSULTING, LLC

SHERIDAN OFFICE
2155 North Main Street
Sheridan, Wyoming 82801
Phone 307-674-0609

LOVELAND OFFICE
1635 Foxtrail Drive, Suite 204
Loveland, Colorado 80538
Phone 970-776-4331

DRAFTED BY:	LMO	CHECKED BY:	BJR	SHEET NO:
DATE DRAFTED:	9/17/14	DATE SURVEYED:	4/23/14	2
REVISED:	12/17/14	FILE NAME:	14-19	2 OF 2