



# Kerr-McGee Oil & Gas Onshore LP

A subsidiary of Anadarko Petroleum Corporation

1099 18<sup>th</sup> Street  
Denver, CO 80202  
720-929-6000

January 5, 2015

Matt Lepore  
Director, Colorado Oil and Gas Conservation Commission  
Department of Natural Resources  
The Chancery Building  
1120 Lincoln Street, Suite 801  
Denver, CO 80203

Re: **30 Day Certification Letter - 318A.e**  
WILSON RANCH 5N-27HZ (Doc No. 400760542)  
Township 4 North, Range 68 West  
Section 26: SENE  
Unit Acreage: 640 acres  
Unit Spacing: 04N-68W-Sec 26 N2  
04N-68W-Sec 27 N2  
Weld County, Colorado

Dear Director Lepore:

Kerr-McGee Oil and Gas Onshore LP ("KMG") hereby certifies that a thirty (30) day notice has been given by certified mail to all mineral owners in the proposed wellbore spacing unit. We have not received any objections to such well location, proposed spacing unit, or additional producing formation. KMG hereby respectfully requests approval of this boundary well.

If you have any questions or issues regarding this permit, please contact Cheryl Light at (720) 929-6461.

Sincerely,

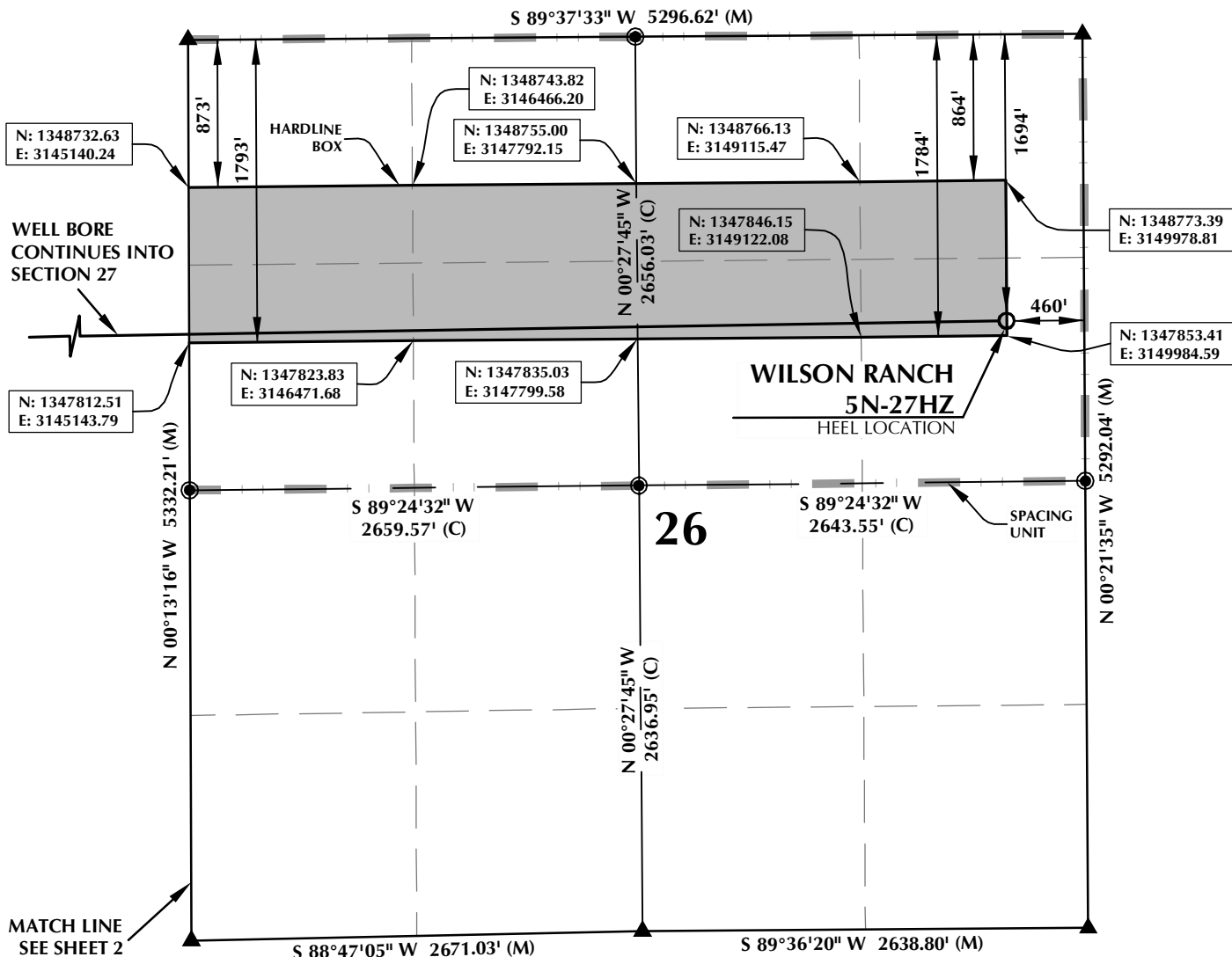
**Kerr-McGee Oil and Gas Onshore LP**

A handwritten signature in blue ink that reads 'RPowers'.

Ronett Powers  
Regulatory Analyst II

Enclosure

# SPACING UNIT: WILSON RANCH 5N-27HZ T4N, R68W



**HEEL LOCATION**  
NAD 83  
N: 1,347,943.29'  
E: 3,149,984.02'

LATITUDE= 40.28725°  
LONGITUDE= -104.962369°

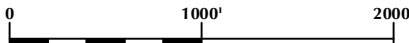
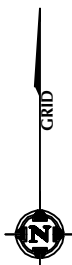
LATITUDE= 40°17'14.122"  
LONGITUDE= -104°57'44.527"

**AVAILABLE FOOTAGE**  
9681'

**BOTTOM HOLE LOCATION**  
NAD 83  
N: 1,347,781.21'  
E: 3,140,304.39'

LATITUDE= 40.286967°  
LONGITUDE= -104.997069°

LATITUDE= 40°17'13.082"  
LONGITUDE= -104°59'49.447"



SCALE: 1" = 1000'

## NOTES:

1. ▲ INDICATES FOUND SECTION CORNER
2. ● INDICATES CALCULATED CORNER
3. BASIS OF BEARING DERIVED FROM COLORADO COORDINATE SYSTEM 1983 NORTH ZONE UNLESS OTHERWISE NOTED.
4. DRAWING NORTHING / EASTING COORDINATES ARE BASED ON COLORADO COORDINATE SYSTEM 1983 NORTH ZONE UNLESS OTHERWISE NOTED.
5. COMBINED SCALE FACTOR: .99971841
6. THIS EXHIBIT DOES NOT REPRESENT A LAND SURVEY PLAT OR IMPROVEMENT SURVEY PLAT AS DEFINED BY C.R.S. 38-51-102 AND CANNOT BE RELIED UPON TO DETERMINE OWNERSHIP.

## WELL PAD - WILSON RANCH 5C-27HZ

WILSON RANCH 5N-27HZ  
SPACING UNIT EXHIBIT  
1694' FNL & 460' FEL SENE (HEEL)  
LOCATED IN SECTION 26  
1686' FNL & 460' FWL SWNW (BOTTOM)  
LOCATED IN SECTION 27  
T4N, R68W, 6TH P.M.  
WELD COUNTY, COLORADO

**Kerr-McGee Oil &  
Gas Onshore L.P.**  
1099 18th Street  
Denver, Colorado 80202



## CONSULTING, LLC

**SHERIDAN OFFICE**  
2155 North Main Street  
Sheridan, Wyoming 82801  
Phone 307-674-0609

**LOVELAND OFFICE**  
1635 Foxtrail Drive, Suite 204  
Loveland, Colorado 80538  
Phone 970-776-4331

DRAFTED BY:	LMO	CHECKED BY:	BJR	SHEET NO:
DATE DRAFTED:	5/1/14	DATE SURVEYED:	4/23/14	1
REVISED:		FILE NAME:	14-19	1 OF 2

## C:\ANADARKO\2014\2014\_19 COLORADO\_T4N\_R68W\_SEC\_26 &amp; SEC\_27\PLATS\HARDLINES\WILSON RANCH 5N-27HZ HARDLINE.dwg, 5/2/2014 10:17:13 AM, lisa

