



Kerr-McGee Oil & Gas Onshore LP

A subsidiary of Anadarko Petroleum Corporation

1099 18th Street
Denver, CO 80202
720-929-6000

December 23, 2014

Matt Lepore
Director, Colorado Oil and Gas Conservation Commission
Department of Natural Resources
The Chancery Building
1120 Lincoln Street, Suite 801
Denver, CO 80203

Re: **30 Day Certification Letter - 318A.e**
BAT 28C-9HZ (Doc # 400742572)
Township 1 North, Range 65 West
Section 9: SWSE
Unit Acreage: 320
Unit Spacing: 01N-65W-Sec 09 E2W2 W2E2
Weld County, Colorado

Dear Mr. Lepore:

Kerr-McGee Oil and Gas Onshore LP ("KMG") hereby certifies that a thirty (30) day notice has been given by certified mail to all mineral owners in the proposed wellbore spacing unit. We have not received any objections to such well location, proposed spacing unit, or additional producing formation. KMG hereby respectfully requests approval of this boundary well.

If you have any questions or issues regarding this permit, please contact Cheryl Light at (720) 929-6461.

Very truly yours,

Kerr-McGee Oil and Gas Onshore LP

A blue ink signature of Craig Richardson, consisting of a stylized 'C' followed by a horizontal line.

Craig Richardson
Regulatory Analyst II

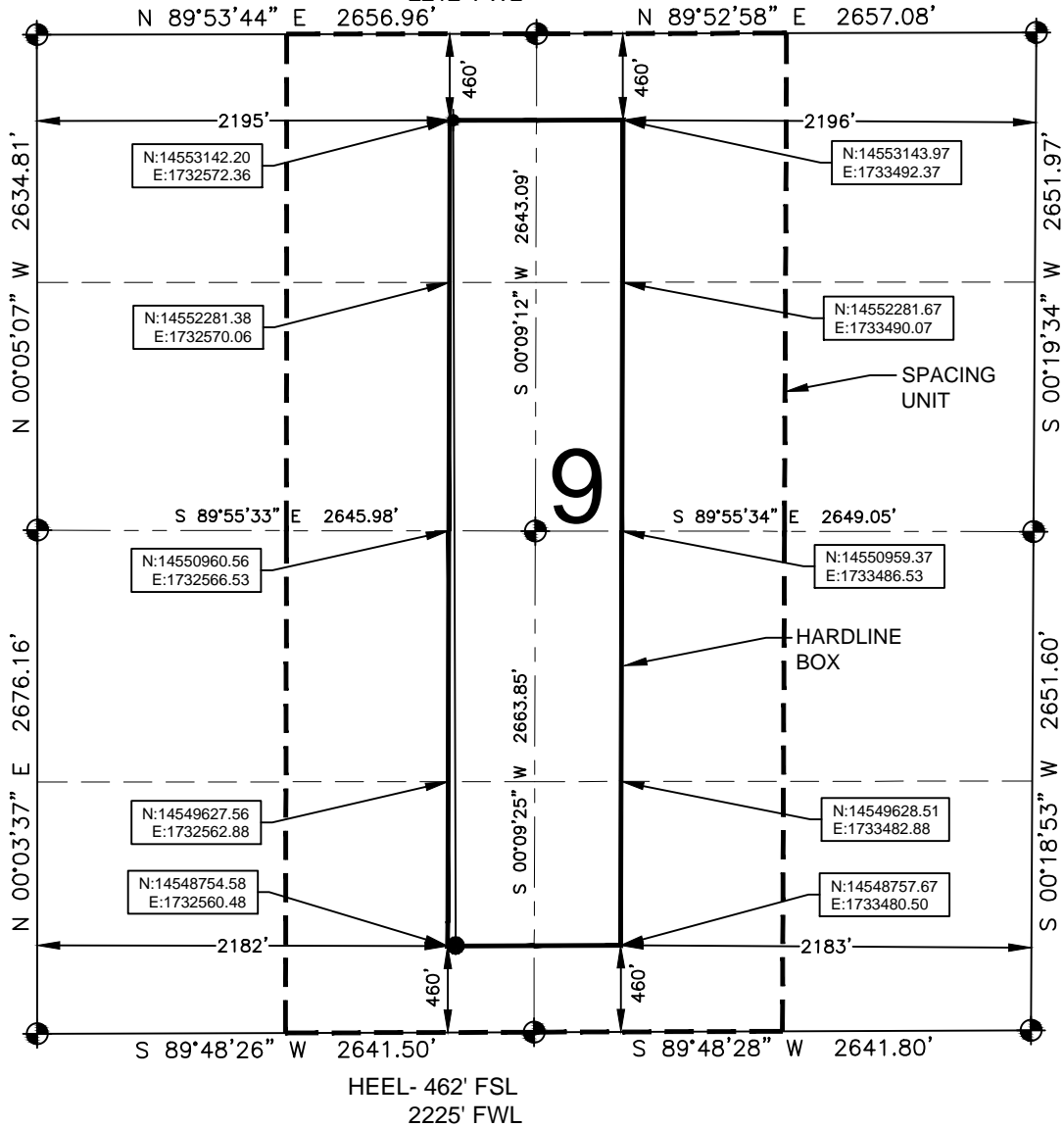
Enclosure

HARDLINE EXHIBIT: BAT 28C-9HZ

SECTION 9 TOWNSHIP 1 NORTH, RANGE 65 WEST, 6TH P.M.

BH- 460' FNL

2212' FWL



HEEL- 462' FSL
2225' FWL

LEGEND

- ⊕ = EXISTING MONUMENT
- ⊙ = PROPOSED HEEL
- ⬮ = BOTTOM HOLE
- BH = BOTTOM HOLE

HEEL LOCATION

NAD83
LATITUDE= 40.060011°
LONGITUDE= 104.670534°

LATITUDE= 40°03'36.041"
LONGITUDE= 104°40'13.922"

QRT/QRT SECTIONS WITHIN PATH OF THE HARDLINE

NENW, SEC. 9 NWNE, SEC. 9
SENW, SEC. 9 SWNE, SEC. 9
NESW, SEC. 9 NWSE, SEC. 9
SESW, SEC. 9 SWSE, SEC. 9

NOTES:

- THIS DOCUMENT IS NOT A LAND SURVEY PLAT OR IMPROVEMENT SURVEY PLAT. THIS DOCUMENT DOES NOT REFLECT A FIELD SURVEY. SECTION BREAKDOWN, MONUMENTATION AND HORIZONTAL POSITIONS SHOWN ARE BASED ON THE HEEL AND BOTTOM HOLE LOCATION PROVIDED BY ANADARKO PETROLEUM CORPORATION

BOTTOM HOLE LOCATION

NAD83
LATITUDE= 40.072055°
LONGITUDE= 104.670528°

LATITUDE= 40°04'19.398"
LONGITUDE= 104°40'13.902"

AVAILABLE FOOTAGE

4386'

PREPARED BY:



DRAWING DATE:
11-12-14
BY: SMF
CHECKED: TJN

HEEL LOCATION:
SE 1/4 SW 1/4,
SEC. 9, T1N, R65W, 6TH P.M.
WELD COUNTY, COLORADO

