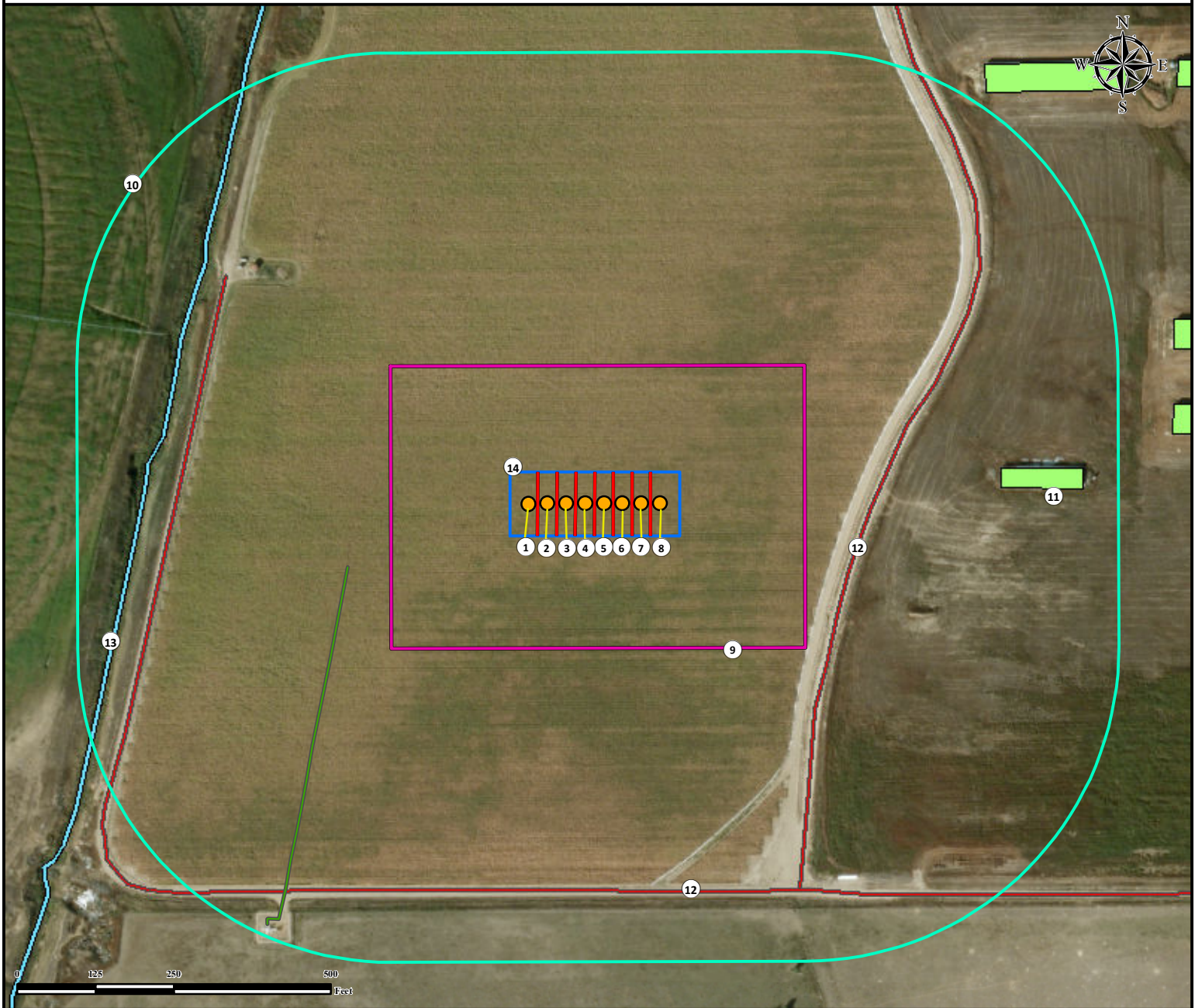


# Location Drawing



## BAT 29C - 9HZ

### Horizontal Multi Well Pad

SW¼ SE¼ SECTION 9, TOWNSHIP 1 NORTH, RANGE 65 WEST OF THE 6TH PRINCIPAL MERIDIAN



- |                                |   |
|--------------------------------|---|
| 1. Proposed Well BAT 4C-9HZ.   | 8. Proposed Well BAT 28N-9HZ.                 |
| 2. Proposed Well BAT 29N1-9HZ. | 9. Operational Disturbance Area.              |
| 3. Proposed Well BAT 29N2-9HZ. | 10. 500' Radius.                              |
| 4. Proposed Well BAT 29C-9HZ.  | 11. Building is ± 662' E.                     |
| 5. Proposed Well BAT 3N1-9HZ.  | 12. Private roads are ± 614' S and ± 431' SE. |
| 6. Proposed Well BAT 3N2-9HZ.  | 13. Ditch is ± 683' W.                        |
| 7. Proposed Well BAT 28C-9HZ.  | 14. Pump Jack Operations Area.                |

Legend			Reference Location
<span style="color: orange;">●</span> Proposed Well	<span style="border: 2px solid magenta; display: inline-block; width: 20px; height: 10px;"></span> Disturbance Area	<span style="border-bottom: 2px solid red; width: 20px; display: inline-block;"></span> Private Road	
	<span style="border: 2px solid cyan; display: inline-block; width: 20px; height: 10px;"></span> 500' Radius	<span style="border-bottom: 2px solid blue; width: 20px; display: inline-block;"></span> Ditch	** All measurements are made from Reference Well BAT 29C-9HZ ** Lat: 40.060444° Long: -104.669292° (NAD83) Elevation: 4930 Feet
	<span style="background-color: lightgreen; display: inline-block; width: 20px; height: 10px;"></span> Building	<span style="border-bottom: 2px solid green; width: 20px; display: inline-block;"></span> Pipeline	
	<span style="border: 2px solid blue; display: inline-block; width: 20px; height: 10px;"></span> Pump Jack Operations Area		Surface Use: Irrigated Crop
 Use our resources to find yours! <a href="http://www.petro-fs.com">www.petro-fs.com</a> (303) 928-7128			Nearest Building Unit: ± 1337' S
Field Date: 09/25/2014 Drafting Date: 12/22/2014 Drafter: DRF Revision: 1			Prepared for:
Data Sources: - Aerial courtesy of Anadarko Petroleum Corporation (2010)			 <b>KERR-MCGEE OIL &amp; GAS ONSHORE LP</b>