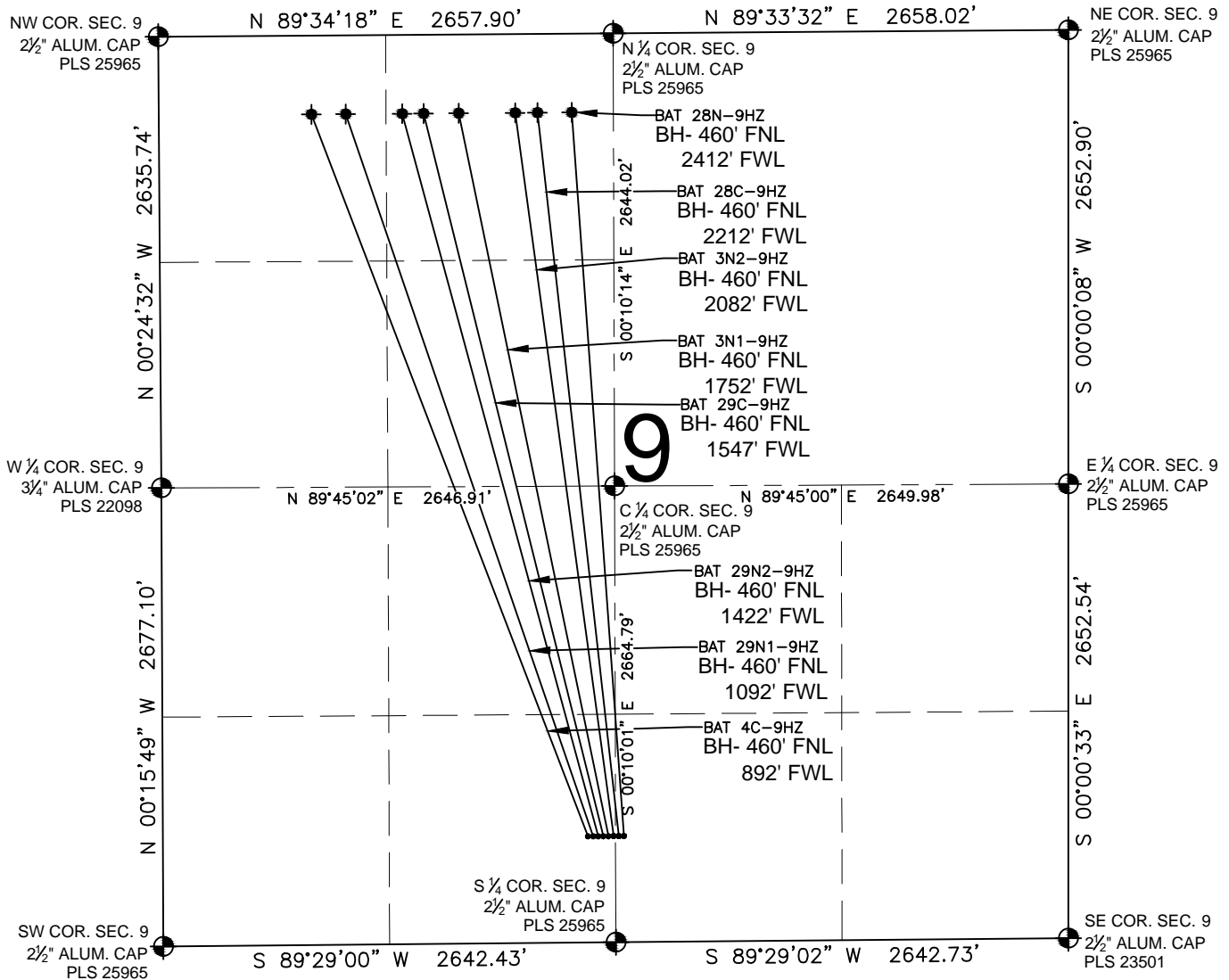


# BAT 29C-9HZ MULTI-WELL PLAN

SECTION 9, TOWNSHIP 1 NORTH, RANGE 65 WEST, 6TH P.M.



## NOTES:

BAT 28N-9HZ TO BE AT 620' FSL, 2595' FEL.  
 BOTTOM HOLE AT 460' FNL & 2412' FWL,  
 BAT 28C-9HZ TO BE AT 620' FSL, 2625' FEL.  
 BOTTOM HOLE AT 460' FNL & 2212' FWL,  
 BAT 3N2-9HZ TO BE AT 620' FSL, 2633' FWL.  
 BOTTOM HOLE AT 460' FNL & 2082' FWL,  
 BAT 3N1-9HZ TO BE AT 620' FSL, 2603' FWL.  
 BOTTOM HOLE AT 460' FNL & 1752' FWL,  
 BAT 29C-9HZ TO BE AT 620' FSL, 2573' FWL.  
 BOTTOM HOLE AT 460' FNL & 1547' FWL,  
 BAT 29N2-9HZ TO BE AT 620' FSL, 2543' FWL.  
 BOTTOM HOLE AT 460' FNL & 1422' FWL,  
 BAT 29N1-9HZ TO BE AT 620' FSL, 2513' FWL.  
 BOTTOM HOLE AT 460' FNL & 1092' FWL,  
 BAT 4C-9HZ TO BE AT 620' FSL, 2483' FWL.  
 BOTTOM HOLE AT 460' FNL & 892' FWL,

## LEGEND

- = EXISTING MONUMENT
- = PROPOSED WELL
- ◆ = BOTTOM HOLE
- ◆ = EXISTING WELL
- BH = BOTTOM HOLE
- = CALCULATED POSITION

PREPARED BY:



KERR-MCGEE OIL & GAS ONSHORE LP

FIELD DATE:

09-25-14

DRAWING DATE:

09-29-14

SURFACE LOCATION:

SW 1/4, SE 1/4, SEC. 9, T1N, R65W, 6TH P.M.

SE 1/4, SW 1/4, SEC. 9, T1N, R65W, 6TH P.M.

WELD COUNTY, COLORADO

