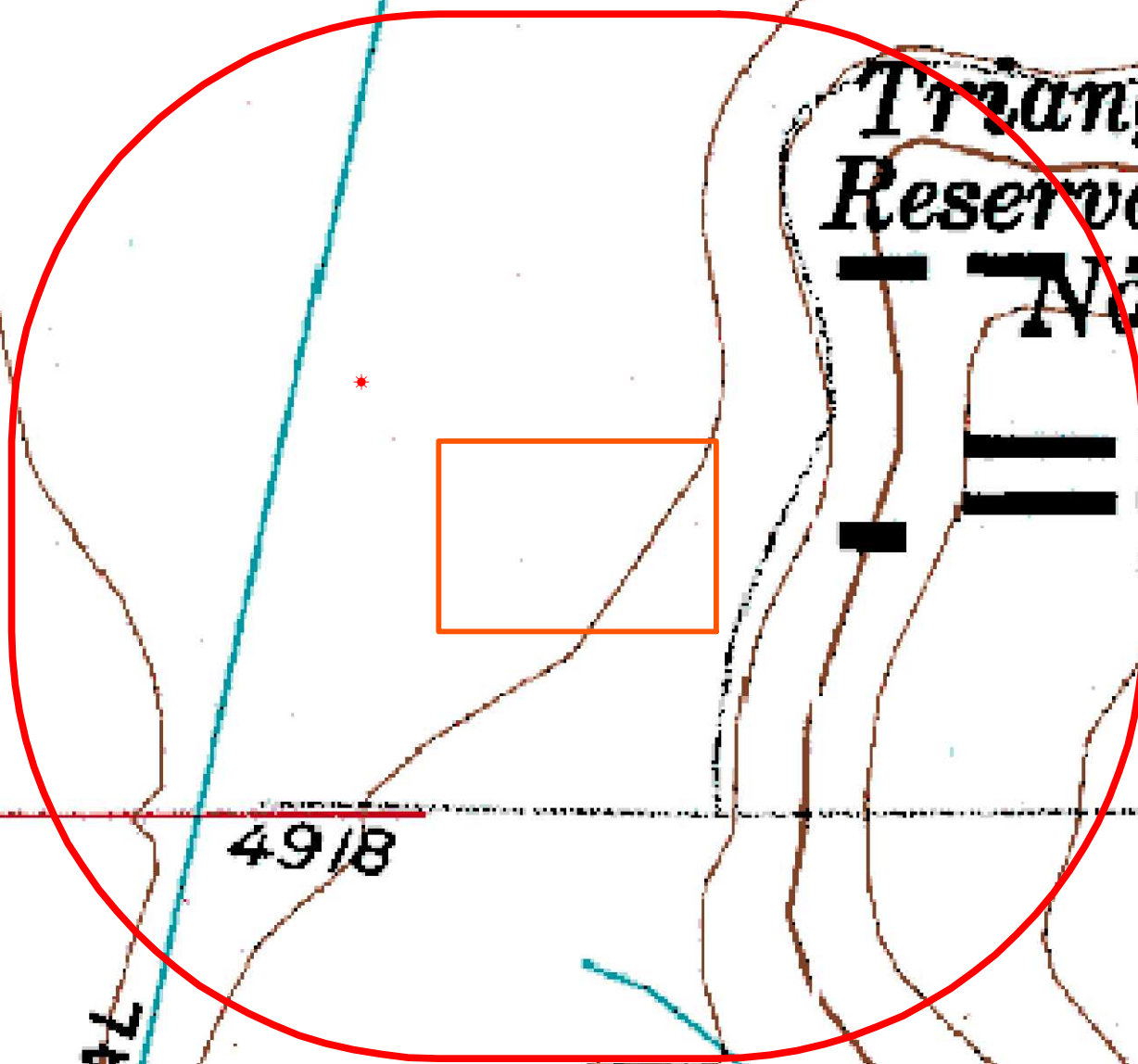



# HYDROLOGY MAP BAT 29C-9HZ





## Nearest Surface Water Feature

Canal: 360' W Elev: 4927'  
Ditch: 770' S Elev: 4936"  
Loc Elev: 4930'

## Legend

 1000' buffer

 Well pad (proposed)

 Existing oil/gas well (COGCC)

All measurements are made from  
the edge of the disturbed area.



Date created: 12/1/2014  
Created by: APC Regulatory GIS  
Scale: 1:5,000  
Projection: NAD83 UTM 13N