

US ROCKIES WATTENBERG PLANNING

WELD-NAD83-UTMFT13N

Bat Pad

BAT 29C-9HZ

Plan A

Plan: Permit Rev-1

Sperry Drilling Services Proposal Report

29 October, 2014

Well Coordinates: 14,548,915.57 N, 1,732,950.13 E (40° 03' 37.60" N, 104° 40' 09.45" W)

Ground Level: 4,930.00 usft

Local Coordinate Origin:

Centered on Well BAT 29C-9HZ

Viewing Datum:

RKB = 17' @ 4947.00usft (D Rig)

TVDs to System:

N

North Reference:

True

Unit System:

Dec-Deg - API - US Survey Feet - Custom

Version: 5000.1 Build: 70

HALLIBURTON

Project: WELD-NAD83-UTMFT13N

Site: Bat Pad

Well: BAT 29C-9HZ

Wellbore: Plan A

Design: Permit Rev-1

US ROCKIES WATTENBERG PLANNING

HALLIBURTON

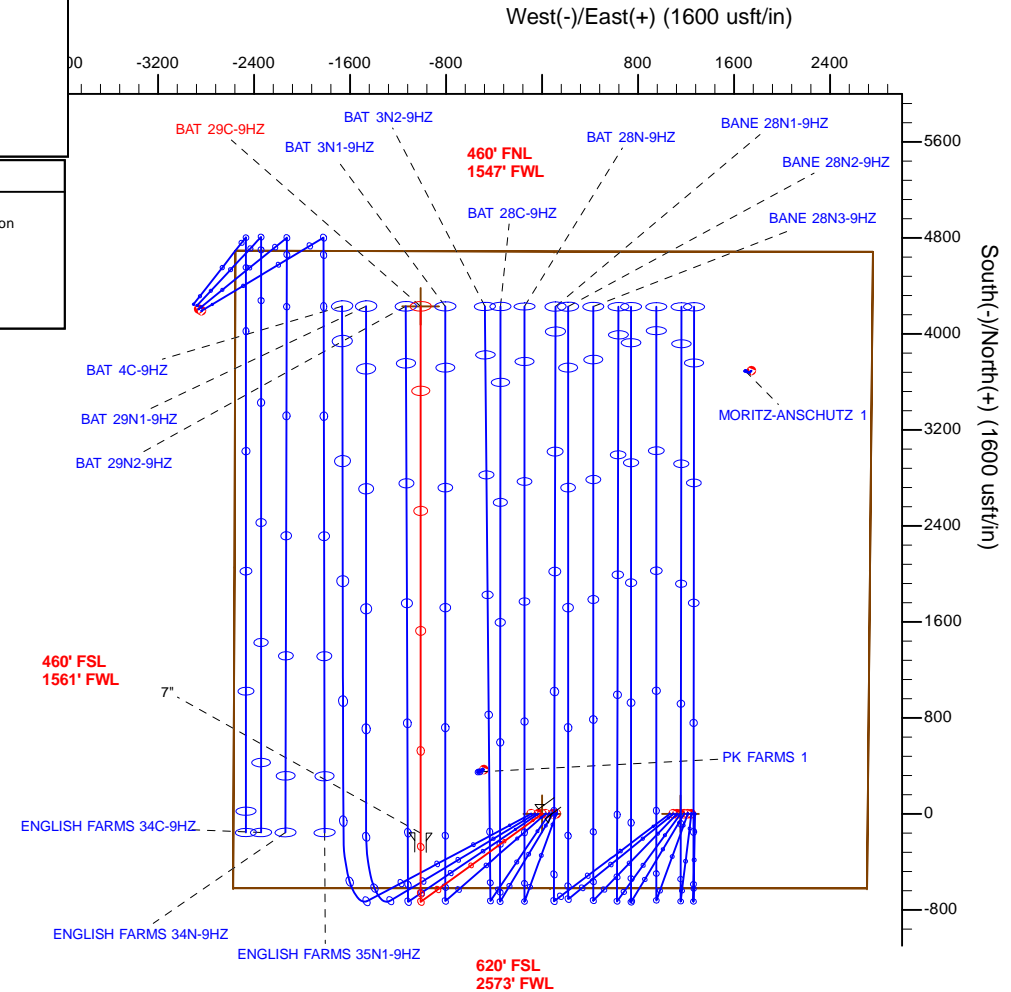
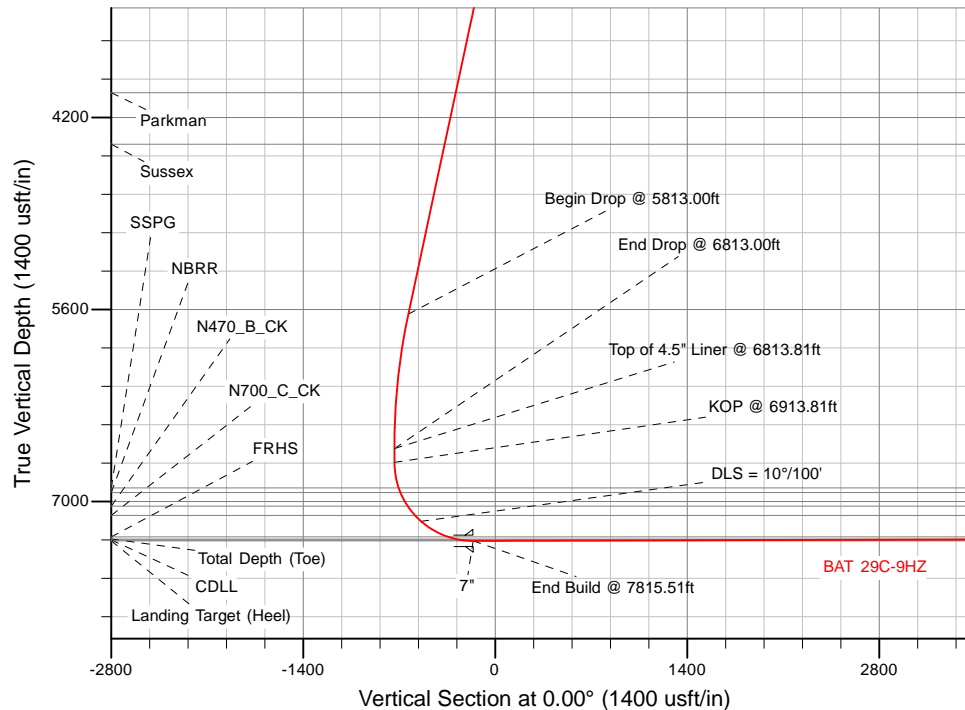
Sperry Drilling

SECTION DETAILS

Sec	MD	Inc	Azi	TVD	+N/-S	+E/-W	Dleg	TFace	VSec	Target
1	0.00	0.00	0.00	0.00	0.00	0.00	0.00	0.00	0.00	
2	2170.00	0.00	0.00	2170.00	0.00	0.00	0.00	0.00	0.00	
3	3170.00	20.00	234.00	3149.82	-101.55	-139.77	2.00	234.00	-101.55	
4	5813.00	20.00	234.00	5633.42	-632.88	-871.09	0.00	0.00	-632.88	
5	6813.00	0.00	0.00	6613.24	-734.43	-1010.86	2.00	180.00	-734.43	
6	6913.81	0.00	0.00	6714.05	-734.43	-1010.86	0.00	0.00	-734.43	
7	7815.51	90.17	0.00	7287.00	-159.78	-1010.85	10.00	0.00	-159.78	
8	12204.54	90.17	0.00	7274.00	4229.24	-1010.77	0.00	0.00	4229.24	BAT 29C-9HZ_BHL

WELLBORE TARGET DETAILS (LAT/LONG)

Name	TVD	+N/-S	+E/-W	Latitude	Longitude	Polygon
1N-R65W-Sec. 9 Section lines	-34.00	-0.34	1153.92	40.060443	-104.665168	
BAT 29C-9HZ_SHL	0.00	0.00	0.00	40.060444	-104.669292	
BAT 29C-9HZ_BHL	7274.00	4229.24	-1010.77	40.072058	-104.672905	



TVD		MD		WELL DETAILS: BAT 29C-9HZ	
6614.05		6813.81		Ground Level:	4930.00
6714.05		6913.81		RKB = 17' @ 4947.00usft (D Rig)	
				Plan: Permit Rev-1 (BAT 29C-9HZ/Plan A)	
				Created By: Clint Eshelman	Date: 10/29/2014
				Reviewed:	Date:

Plan Report for BAT 29C-9HZ - Permit Rev-1

Measured Depth (usft)	Inclination (°)	Azimuth (°)	Vertical Depth (usft)	+N/-S (usft)	+E/-W (usft)	Vertical Section (usft)	Dogleg Rate (°/100usft)	Build Rate (°/100usft)	Turn Rate (°/100usft)	Toolface Azimuth (°)
0.00	0.00	0.00	0.00	0.00	0.00	0.00	0.00	0.00	0.00	0.00
1N-R65W-Sec. 9_Section lines - BAT 29C-9HZ_SHL										
100.00	0.00	0.00	100.00	0.00	0.00	0.00	0.00	0.00	0.00	0.00
200.00	0.00	0.00	200.00	0.00	0.00	0.00	0.00	0.00	0.00	0.00
300.00	0.00	0.00	300.00	0.00	0.00	0.00	0.00	0.00	0.00	0.00
400.00	0.00	0.00	400.00	0.00	0.00	0.00	0.00	0.00	0.00	0.00
500.00	0.00	0.00	500.00	0.00	0.00	0.00	0.00	0.00	0.00	0.00
600.00	0.00	0.00	600.00	0.00	0.00	0.00	0.00	0.00	0.00	0.00
700.00	0.00	0.00	700.00	0.00	0.00	0.00	0.00	0.00	0.00	0.00
800.00	0.00	0.00	800.00	0.00	0.00	0.00	0.00	0.00	0.00	0.00
900.00	0.00	0.00	900.00	0.00	0.00	0.00	0.00	0.00	0.00	0.00
943.00	0.00	0.00	943.00	0.00	0.00	0.00	0.00	0.00	0.00	0.00
Base Fox Hills										
1,000.00	0.00	0.00	1,000.00	0.00	0.00	0.00	0.00	0.00	0.00	0.00
1,100.00	0.00	0.00	1,100.00	0.00	0.00	0.00	0.00	0.00	0.00	0.00
1,200.00	0.00	0.00	1,200.00	0.00	0.00	0.00	0.00	0.00	0.00	0.00
1,300.00	0.00	0.00	1,300.00	0.00	0.00	0.00	0.00	0.00	0.00	0.00
1,400.00	0.00	0.00	1,400.00	0.00	0.00	0.00	0.00	0.00	0.00	0.00
1,475.00	0.00	0.00	1,475.00	0.00	0.00	0.00	0.00	0.00	0.00	0.00
Surface Csg Setting Depth - 9 5/8"										
1,500.00	0.00	0.00	1,500.00	0.00	0.00	0.00	0.00	0.00	0.00	0.00
1,600.00	0.00	0.00	1,600.00	0.00	0.00	0.00	0.00	0.00	0.00	0.00
1,700.00	0.00	0.00	1,700.00	0.00	0.00	0.00	0.00	0.00	0.00	0.00
1,800.00	0.00	0.00	1,800.00	0.00	0.00	0.00	0.00	0.00	0.00	0.00
1,900.00	0.00	0.00	1,900.00	0.00	0.00	0.00	0.00	0.00	0.00	0.00
2,000.00	0.00	0.00	2,000.00	0.00	0.00	0.00	0.00	0.00	0.00	0.00
2,100.00	0.00	0.00	2,100.00	0.00	0.00	0.00	0.00	0.00	0.00	0.00
2,170.00	0.00	0.00	2,170.00	0.00	0.00	0.00	0.00	0.00	0.00	0.00
Begin Nudge @ 2170.00ft										
2,200.00	0.60	234.00	2,200.00	-0.09	-0.13	-0.09	2.00	2.00	0.00	234.00
2,300.00	2.60	234.00	2,299.96	-1.73	-2.39	-1.73	2.00	2.00	0.00	0.00
2,400.00	4.60	234.00	2,399.75	-5.42	-7.47	-5.42	2.00	2.00	0.00	0.00
2,500.00	6.60	234.00	2,499.27	-11.16	-15.36	-11.16	2.00	2.00	0.00	0.00
2,600.00	8.60	234.00	2,598.39	-18.93	-26.06	-18.93	2.00	2.00	0.00	0.00
2,700.00	10.60	234.00	2,696.98	-28.73	-39.55	-28.73	2.00	2.00	0.00	0.00
2,800.00	12.60	234.00	2,794.93	-40.55	-55.82	-40.55	2.00	2.00	0.00	0.00
2,900.00	14.60	234.00	2,892.13	-54.37	-74.84	-54.37	2.00	2.00	0.00	0.00
3,000.00	16.60	234.00	2,988.44	-70.18	-96.59	-70.18	2.00	2.00	0.00	0.00
3,100.00	18.60	234.00	3,083.75	-87.95	-121.06	-87.95	2.00	2.00	0.00	0.00
3,170.00	20.00	234.00	3,149.82	-101.55	-139.77	-101.55	2.00	2.00	0.00	0.00
End Nudge @ 3170.00ft										
3,200.00	20.00	234.00	3,178.01	-107.58	-148.07	-107.58	0.00	0.00	0.00	0.00
3,300.00	20.00	234.00	3,271.98	-127.68	-175.74	-127.68	0.00	0.00	0.00	0.00
3,400.00	20.00	234.00	3,365.94	-147.79	-203.41	-147.79	0.00	0.00	0.00	0.00
3,500.00	20.00	234.00	3,459.91	-167.89	-231.08	-167.89	0.00	0.00	0.00	0.00
3,600.00	20.00	234.00	3,553.88	-188.00	-258.75	-188.00	0.00	0.00	0.00	0.00
3,700.00	20.00	234.00	3,647.85	-208.10	-286.42	-208.10	0.00	0.00	0.00	0.00
3,800.00	20.00	234.00	3,741.82	-228.20	-314.09	-228.20	0.00	0.00	0.00	0.00
3,900.00	20.00	234.00	3,835.79	-248.31	-341.76	-248.31	0.00	0.00	0.00	0.00
4,000.00	20.00	234.00	3,929.76	-268.41	-369.43	-268.41	0.00	0.00	0.00	0.00
4,094.97	20.00	234.00	4,019.00	-287.50	-395.71	-287.50	0.00	0.00	0.00	0.00
Parkman										
4,100.00	20.00	234.00	4,023.73	-288.51	-397.10	-288.51	0.00	0.00	0.00	0.00
4,200.00	20.00	234.00	4,117.70	-308.62	-424.77	-308.62	0.00	0.00	0.00	0.00
4,300.00	20.00	234.00	4,211.67	-328.72	-452.44	-328.72	0.00	0.00	0.00	0.00
4,400.00	20.00	234.00	4,305.64	-348.82	-480.11	-348.82	0.00	0.00	0.00	0.00
4,494.03	20.00	234.00	4,394.00	-367.73	-506.13	-367.73	0.00	0.00	0.00	0.00

Plan Report for BAT 29C-9HZ - Permit Rev-1

Measured Depth (usft)	Inclination (°)	Azimuth (°)	Vertical Depth (usft)	+N/-S (usft)	+E/-W (usft)	Vertical Section (usft)	Dogleg Rate (°/100usft)	Build Rate (°/100usft)	Turn Rate (°/100usft)	Toolface Azimuth (°)
Sussex										
4,500.00	20.00	234.00	4,399.61	-368.93	-507.78	-368.93	0.00	0.00	0.00	0.00
4,600.00	20.00	234.00	4,493.58	-389.03	-535.45	-389.03	0.00	0.00	0.00	0.00
4,700.00	20.00	234.00	4,587.55	-409.13	-563.12	-409.13	0.00	0.00	0.00	0.00
4,800.00	20.00	234.00	4,681.51	-429.24	-590.79	-429.24	0.00	0.00	0.00	0.00
4,900.00	20.00	234.00	4,775.48	-449.34	-618.46	-449.34	0.00	0.00	0.00	0.00
5,000.00	20.00	234.00	4,869.45	-469.44	-646.13	-469.44	0.00	0.00	0.00	0.00
5,100.00	20.00	234.00	4,963.42	-489.55	-673.80	-489.55	0.00	0.00	0.00	0.00
5,200.00	20.00	234.00	5,057.39	-509.65	-701.47	-509.65	0.00	0.00	0.00	0.00
5,300.00	20.00	234.00	5,151.36	-529.75	-729.14	-529.75	0.00	0.00	0.00	0.00
5,400.00	20.00	234.00	5,245.33	-549.86	-756.81	-549.86	0.00	0.00	0.00	0.00
5,500.00	20.00	234.00	5,339.30	-569.96	-784.48	-569.96	0.00	0.00	0.00	0.00
5,600.00	20.00	234.00	5,433.27	-590.06	-812.15	-590.06	0.00	0.00	0.00	0.00
5,700.00	20.00	234.00	5,527.24	-610.17	-839.82	-610.17	0.00	0.00	0.00	0.00
5,800.00	20.00	234.00	5,621.21	-630.27	-867.49	-630.27	0.00	0.00	0.00	0.00
5,813.00	20.00	234.00	5,633.42	-632.88	-871.09	-632.88	0.00	0.00	0.00	0.00
Begin Drop @ 5813.00ft										
5,900.00	18.26	234.00	5,715.62	-649.64	-894.16	-649.64	2.00	-2.00	0.00	180.00
6,000.00	16.26	234.00	5,811.11	-667.08	-918.16	-667.08	2.00	-2.00	0.00	180.00
6,100.00	14.26	234.00	5,907.58	-682.55	-939.45	-682.55	2.00	-2.00	0.00	180.00
6,200.00	12.26	234.00	6,004.91	-696.03	-958.01	-696.03	2.00	-2.00	0.00	180.00
6,300.00	10.26	234.00	6,102.98	-707.51	-973.80	-707.51	2.00	-2.00	0.00	180.00
6,400.00	8.26	234.00	6,201.67	-716.97	-986.82	-716.97	2.00	-2.00	0.00	180.00
6,500.00	6.26	234.00	6,300.86	-724.39	-997.04	-724.39	2.00	-2.00	0.00	180.00
6,600.00	4.26	234.00	6,400.43	-729.78	-1,004.46	-729.78	2.00	-2.00	0.00	180.00
6,700.00	2.26	234.00	6,500.27	-733.13	-1,009.06	-733.13	2.00	-2.00	0.00	180.00
6,800.00	0.26	234.00	6,600.24	-734.42	-1,010.84	-734.42	2.00	-2.00	0.00	180.00
6,813.00	0.00	0.00	6,613.24	-734.43	-1,010.86	-734.43	2.00	-2.00	0.00	180.00
End Drop @ 6813.00ft										
6,813.81	0.00	0.00	6,614.05	-734.43	-1,010.86	-734.43	0.00	0.00	0.00	0.00
Top of 4.5" Liner @ 6813.81ft										
6,900.00	0.00	0.00	6,700.24	-734.43	-1,010.86	-734.43	0.00	0.00	0.00	0.00
6,913.81	0.00	0.00	6,714.05	-734.43	-1,010.86	-734.43	0.00	0.00	0.00	0.00
KOP @ 6913.81ft										
7,000.00	8.62	0.00	6,799.91	-727.96	-1,010.86	-727.96	10.00	10.00	0.00	0.00
7,100.00	18.62	0.00	6,896.98	-704.45	-1,010.86	-704.45	10.00	10.00	0.00	0.00
7,104.25	19.04	0.00	6,901.00	-703.08	-1,010.86	-703.08	10.00	10.00	0.00	0.00
SSPG										
7,139.56	22.57	0.00	6,934.00	-690.53	-1,010.86	-690.53	10.00	10.00	0.00	0.00
NBRR										
7,200.00	28.62	0.00	6,988.49	-664.43	-1,010.86	-664.43	10.00	10.00	0.00	0.00
7,253.28	33.95	0.00	7,034.00	-636.78	-1,010.86	-636.78	10.00	10.00	0.00	0.00
N470_B_CK										
7,300.00	38.62	0.00	7,071.65	-609.14	-1,010.86	-609.14	10.00	10.00	0.00	0.00
7,338.63	42.48	0.00	7,101.00	-584.03	-1,010.86	-584.03	10.00	10.00	0.00	0.00
N700_C_CK										
7,400.00	48.62	0.00	7,143.96	-540.24	-1,010.86	-540.24	10.00	10.00	0.00	0.00
DLS = 10°/100'										
7,500.00	58.62	0.00	7,203.20	-459.83	-1,010.86	-459.83	10.00	10.00	0.00	0.00
7,600.00	68.62	0.00	7,247.57	-370.36	-1,010.86	-370.36	10.00	10.00	0.00	0.00
7,630.72	71.69	0.00	7,258.00	-341.47	-1,010.86	-341.47	10.00	10.00	0.00	0.00
FRHS										
7,700.00	78.62	0.00	7,275.74	-274.54	-1,010.85	-274.54	10.00	10.00	0.00	0.00
7,738.01	82.42	0.00	7,282.00	-237.05	-1,010.85	-237.05	10.00	10.00	0.00	0.00
CDLL										
7,800.00	88.62	0.00	7,286.84	-175.29	-1,010.85	-175.29	10.00	10.00	0.00	0.00
7,815.51	90.17	0.00	7,287.00	-159.78	-1,010.85	-159.78	10.00	10.00	0.00	0.00
End Build @ 7815.51ft - Landing Target (Heel) - 7"										

Plan Report for BAT 29C-9HZ - Permit Rev-1

Measured Depth (usft)	Inclination (°)	Azimuth (°)	Vertical Depth (usft)	+N/-S (usft)	+E/-W (usft)	Vertical Section (usft)	Dogleg Rate (°/100usft)	Build Rate (°/100usft)	Turn Rate (°/100usft)	Toolface Azimuth (°)
7,900.00	90.17	0.00	7,286.75	-75.29	-1,010.85	-75.29	0.00	0.00	0.00	0.00
8,000.00	90.17	0.00	7,286.46	24.71	-1,010.85	24.71	0.00	0.00	0.00	0.00
8,100.00	90.17	0.00	7,286.16	124.71	-1,010.85	124.71	0.00	0.00	0.00	0.00
8,200.00	90.17	0.00	7,285.86	224.71	-1,010.84	224.71	0.00	0.00	0.00	0.00
8,300.00	90.17	0.00	7,285.57	324.71	-1,010.84	324.71	0.00	0.00	0.00	0.00
8,400.00	90.17	0.00	7,285.27	424.71	-1,010.84	424.71	0.00	0.00	0.00	0.00
8,500.00	90.17	0.00	7,284.98	524.71	-1,010.84	524.71	0.00	0.00	0.00	0.00
8,600.00	90.17	0.00	7,284.68	624.71	-1,010.84	624.71	0.00	0.00	0.00	0.00
8,700.00	90.17	0.00	7,284.38	724.71	-1,010.84	724.71	0.00	0.00	0.00	0.00
8,800.00	90.17	0.00	7,284.09	824.71	-1,010.83	824.71	0.00	0.00	0.00	0.00
8,900.00	90.17	0.00	7,283.79	924.71	-1,010.83	924.71	0.00	0.00	0.00	0.00
9,000.00	90.17	0.00	7,283.49	1,024.71	-1,010.83	1,024.71	0.00	0.00	0.00	0.00
9,100.00	90.17	0.00	7,283.20	1,124.71	-1,010.83	1,124.71	0.00	0.00	0.00	0.00
9,200.00	90.17	0.00	7,282.90	1,224.71	-1,010.83	1,224.71	0.00	0.00	0.00	0.00
9,300.00	90.17	0.00	7,282.61	1,324.71	-1,010.82	1,324.71	0.00	0.00	0.00	0.00
9,400.00	90.17	0.00	7,282.31	1,424.71	-1,010.82	1,424.71	0.00	0.00	0.00	0.00
9,500.00	90.17	0.00	7,282.01	1,524.71	-1,010.82	1,524.71	0.00	0.00	0.00	0.00
9,600.00	90.17	0.00	7,281.72	1,624.71	-1,010.82	1,624.71	0.00	0.00	0.00	0.00
9,700.00	90.17	0.00	7,281.42	1,724.70	-1,010.82	1,724.70	0.00	0.00	0.00	0.00
9,800.00	90.17	0.00	7,281.12	1,824.70	-1,010.82	1,824.70	0.00	0.00	0.00	0.00
9,900.00	90.17	0.00	7,280.83	1,924.70	-1,010.81	1,924.70	0.00	0.00	0.00	0.00
10,000.00	90.17	0.00	7,280.53	2,024.70	-1,010.81	2,024.70	0.00	0.00	0.00	0.00
10,100.00	90.17	0.00	7,280.24	2,124.70	-1,010.81	2,124.70	0.00	0.00	0.00	0.00
10,200.00	90.17	0.00	7,279.94	2,224.70	-1,010.81	2,224.70	0.00	0.00	0.00	0.00
10,300.00	90.17	0.00	7,279.64	2,324.70	-1,010.81	2,324.70	0.00	0.00	0.00	0.00
10,400.00	90.17	0.00	7,279.35	2,424.70	-1,010.80	2,424.70	0.00	0.00	0.00	0.00
10,500.00	90.17	0.00	7,279.05	2,524.70	-1,010.80	2,524.70	0.00	0.00	0.00	0.00
10,600.00	90.17	0.00	7,278.75	2,624.70	-1,010.80	2,624.70	0.00	0.00	0.00	0.00
10,700.00	90.17	0.00	7,278.46	2,724.70	-1,010.80	2,724.70	0.00	0.00	0.00	0.00
10,800.00	90.17	0.00	7,278.16	2,824.70	-1,010.80	2,824.70	0.00	0.00	0.00	0.00
10,900.00	90.17	0.00	7,277.87	2,924.70	-1,010.79	2,924.70	0.00	0.00	0.00	0.00
11,000.00	90.17	0.00	7,277.57	3,024.70	-1,010.79	3,024.70	0.00	0.00	0.00	0.00
11,100.00	90.17	0.00	7,277.27	3,124.70	-1,010.79	3,124.70	0.00	0.00	0.00	0.00
11,200.00	90.17	0.00	7,276.98	3,224.70	-1,010.79	3,224.70	0.00	0.00	0.00	0.00
11,300.00	90.17	0.00	7,276.68	3,324.70	-1,010.79	3,324.70	0.00	0.00	0.00	0.00
11,400.00	90.17	0.00	7,276.38	3,424.70	-1,010.79	3,424.70	0.00	0.00	0.00	0.00
11,500.00	90.17	0.00	7,276.09	3,524.70	-1,010.78	3,524.70	0.00	0.00	0.00	0.00
11,600.00	90.17	0.00	7,275.79	3,624.70	-1,010.78	3,624.70	0.00	0.00	0.00	0.00
11,700.00	90.17	0.00	7,275.49	3,724.70	-1,010.78	3,724.70	0.00	0.00	0.00	0.00
11,800.00	90.17	0.00	7,275.20	3,824.70	-1,010.78	3,824.70	0.00	0.00	0.00	0.00
11,900.00	90.17	0.00	7,274.90	3,924.70	-1,010.78	3,924.70	0.00	0.00	0.00	0.00
12,000.00	90.17	0.00	7,274.61	4,024.69	-1,010.77	4,024.69	0.00	0.00	0.00	0.00
12,100.00	90.17	0.00	7,274.31	4,124.69	-1,010.77	4,124.69	0.00	0.00	0.00	0.00
12,200.00	90.17	0.00	7,274.01	4,224.69	-1,010.77	4,224.69	0.00	0.00	0.00	0.00
12,204.54	90.17	0.00	7,274.00	4,229.23	-1,010.77	4,229.23	0.00	0.00	0.00	0.00

TD Well @ 12204.54ft - Total Depth (Toe) - BAT 29C-9HZ_BHL

Plan Report for BAT 29C-9HZ - Permit Rev-1

Plan Annotations

Measured Depth (usft)	Vertical Depth (usft)	Local Coordinates		Comment
		+N/-S (usft)	+E/-W (usft)	
2,170.00	2,170.00	0.00	0.00	Begin Nudge @ 2170.00ft
3,170.00	3,149.82	-101.55	-139.77	End Nudge @ 3170.00ft
5,813.00	5,633.42	-632.88	-871.09	Begin Drop @ 5813.00ft
6,813.00	6,613.24	-734.43	-1,010.86	End Drop @ 6813.00ft
6,813.81	6,614.05	-734.43	-1,010.86	Top of 4.5" Liner @ 6813.81ft
6,913.81	6,714.05	-734.43	-1,010.86	KOP @ 6913.81ft
7,400.00	7,143.96	-540.24	-1,010.86	DLS = 10°/100'
7,815.51	7,287.00	-159.78	-1,010.85	End Build @ 7815.51ft
12,204.54	7,274.00	4,229.23	-1,010.77	TD Well @ 12204.54ft

Vertical Section Information

Angle Type	Target	Azimuth (°)	Origin Type	Origin		Start TVD (usft)
				+N/_S (usft)	+E/-W (usft)	
User	No Target (Freehand)	0.00	Slot	0.00	0.00	0.00

Survey tool program

From (usft)	To (usft)	Survey/Plan	Survey Tool
0.00	7,815.51	Permit Rev-1	MWD+IFR1
7,815.51	12,204.54	Permit Rev-1	MWD+IFR1

Casing Details

Measured Depth (usft)	Vertical Depth (usft)	Name	Casing Diameter (")	Hole Diameter (")
1,475.00	1,475.00	9 5/8"	9-5/8	13-1/2
7,815.51	7,287.00	7"	7	8-3/4

Formation Details

Measured Depth (usft)	Vertical Depth (usft)	Name	Lithology	Dip (°)	Dip Direction (°)
943.00	943.00	Base Fox Hills		0.00	
1,475.00	1,475.00	Surface Csg Setting Depth		0.00	
4,094.97	4,019.00	Parkman		0.00	
4,494.03	4,394.00	Sussex		0.00	
7,104.25	6,901.00	SSPG		0.00	
7,139.56	6,934.00	NBRR		0.00	
7,253.28	7,034.00	N470_B_CK		0.00	
7,338.63	7,101.00	N700_C_CK		0.00	
7,630.72	7,258.00	FRHS		0.00	
7,738.01	7,282.00	CDLL		0.00	
7,815.51	7,287.00	Landing Target (Heel)		0.00	
12,204.54	7,274.00	Total Depth (Toe)		0.00	

Plan Report for BAT 29C-9HZ - Permit Rev-1

Targets associated with this wellbore

Target Name	TVD (usft)	+N/-S (usft)	+E/-W (usft)	Shape
1N-R65W-Sec. 9_Section lines	-34.00	-0.34	1,153.92	Polygon
BAT 29C-9HZ_SHL	0.00	0.00	0.00	Point
BAT 29C-9HZ_BHL	7,274.00	4,229.24	-1,010.77	Point

North Reference Sheet for Bat Pad - BAT 29C-9HZ - Plan A

All data is in US Feet unless otherwise stated. Directions and Coordinates are relative to True North Reference.

Vertical Depths are relative to RKB = 17' @ 4947.00usft (D Rig). Northing and Easting are relative to BAT 29C-9HZ

Coordinate System is Universal Transverse Mercator (US Survey Feet), Zone 13N (108 W to 102 W) using datum North American Datum 1983, ellipsoid

Projection method is Transverse Mercator (Gauss-Kruger)

Central Meridian is -105.00°, Longitude Origin:0.000000°, Latitude Origin:0.000000°

False Easting: 1,640,416.67usft, False Northing: 0.00usft, Scale Reduction: 0.99960979

Grid Coordinates of Well: 14,548,915.57 usft N, 1,732,950.13 usft E

Geographical Coordinates of Well: 40° 03' 37.60" N, 104° 40' 09.45" W

Grid Convergence at Surface is: 0.21°

Based upon Minimum Curvature type calculations, at a Measured Depth of 12,204.54usft
the Bottom Hole Displacement is 4,348.34usft in the Direction of 346.56° (True).

Magnetic Convergence at surface is: -8.12° (20 October 2014, , IGRF2010)

