



# Kerr-McGee Oil & Gas Onshore LP

A subsidiary of Anadarko Petroleum Corporation

1099 18<sup>th</sup> Street  
Denver, CO 80202  
720-929-6000

December 23, 2014

Matt Lepore  
Director, Colorado Oil and Gas Conservation Commission  
Department of Natural Resources  
The Chancery Building  
1120 Lincoln Street, Suite 801  
Denver, CO 80203

Re: **30 Day Certification Letter - 318A.e**  
BAT 3N2-9HZ (Doc # 400742567)  
Township 1 North, Range 65 West  
Section 9: SESW  
Unit Acreage: 160  
Unit Spacing: 01N-65W-Sec 09 E2W2  
Weld County, Colorado

Dear Mr. Lepore:

Kerr-McGee Oil and Gas Onshore LP ("KMG") hereby certifies that a thirty (30) day notice has been given by certified mail to all mineral owners in the proposed wellbore spacing unit. We have not received any objections to such well location, proposed spacing unit, or additional producing formation. KMG hereby respectfully requests approval of this boundary well.

If you have any questions or issues regarding this permit, please contact Cheryl Light at (720) 929-6461.

Very truly yours,

**Kerr-McGee Oil and Gas Onshore LP**

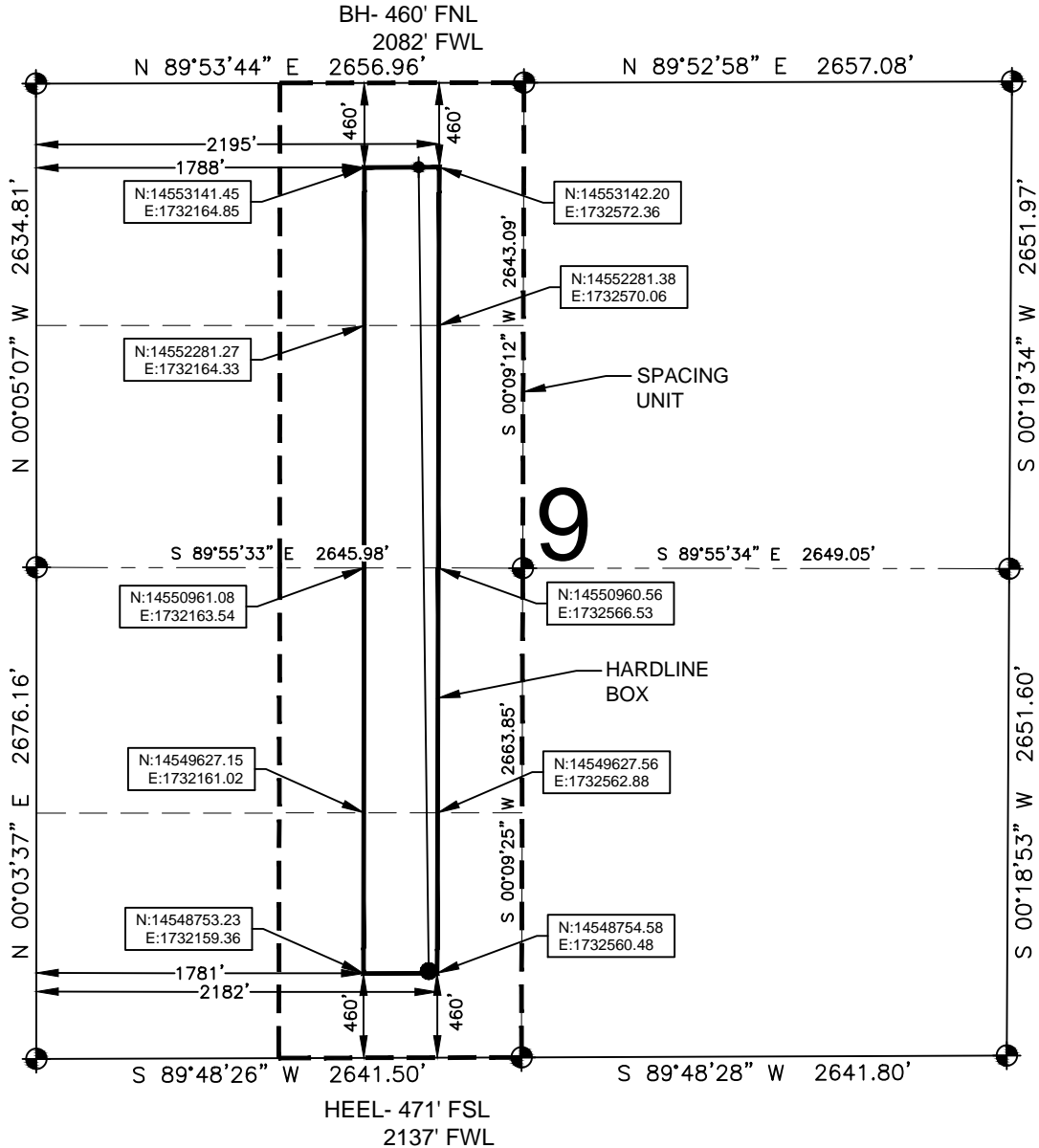
A blue ink signature of Craig Richardson, consisting of a stylized 'C' followed by a horizontal line.

Craig Richardson  
Regulatory Analyst II

Enclosure

# HARDLINE EXHIBIT: BAT 3N2-9HZ

SECTION 9 TOWNSHIP 1 NORTH, RANGE 65 WEST, 6TH P.M.



## LEGEND

- = EXISTING MONUMENT    ● = BOTTOM HOLE  
● = PROPOSED HEEL      BH = BOTTOM HOLE

## HEEL LOCATION

NAD83  
LATITUDE= 40.060036°  
LONGITUDE= 104.670848°  
  
LATITUDE= 40°03'36.130"  
LONGITUDE= 104°40'15.054"

## QRT/QRT SECTIONS WITHIN PATH OF THE HARDLINE

NENW, SEC. 9  
SENW, SEC. 9  
NESW, SEC. 9  
SESW, SEC. 9

## NOTES:

1. THIS DOCUMENT IS NOT A LAND SURVEY PLAT OR IMPROVEMENT SURVEY PLAT. THIS DOCUMENT DOES NOT REFLECT A FIELD SURVEY. SECTION BREAKDOWN, MONUMENTATION AND HORIZONTAL POSITIONS SHOWN ARE BASED ON THE HEEL AND BOTTOM HOLE LOCATION PROVIDED BY ANADARKO PETROLEUM CORPORATION

## BOTTOM HOLE LOCATION

NAD83  
LATITUDE= 40.072056°  
LONGITUDE= 104.670993°  
  
LATITUDE= 40°04'19.401"  
LONGITUDE= 104°40'15.574"

## AVAILABLE FOOTAGE

4388'

PREPARED BY:



DRAWING DATE:  
11-12-14

BY: SMF  
CHECKED: TJN

HEEL LOCATION:  
SE 1/4 SW 1/4,  
SEC. 9, T1N, R65W, 6TH P.M.  
WELD COUNTY, COLORADO

