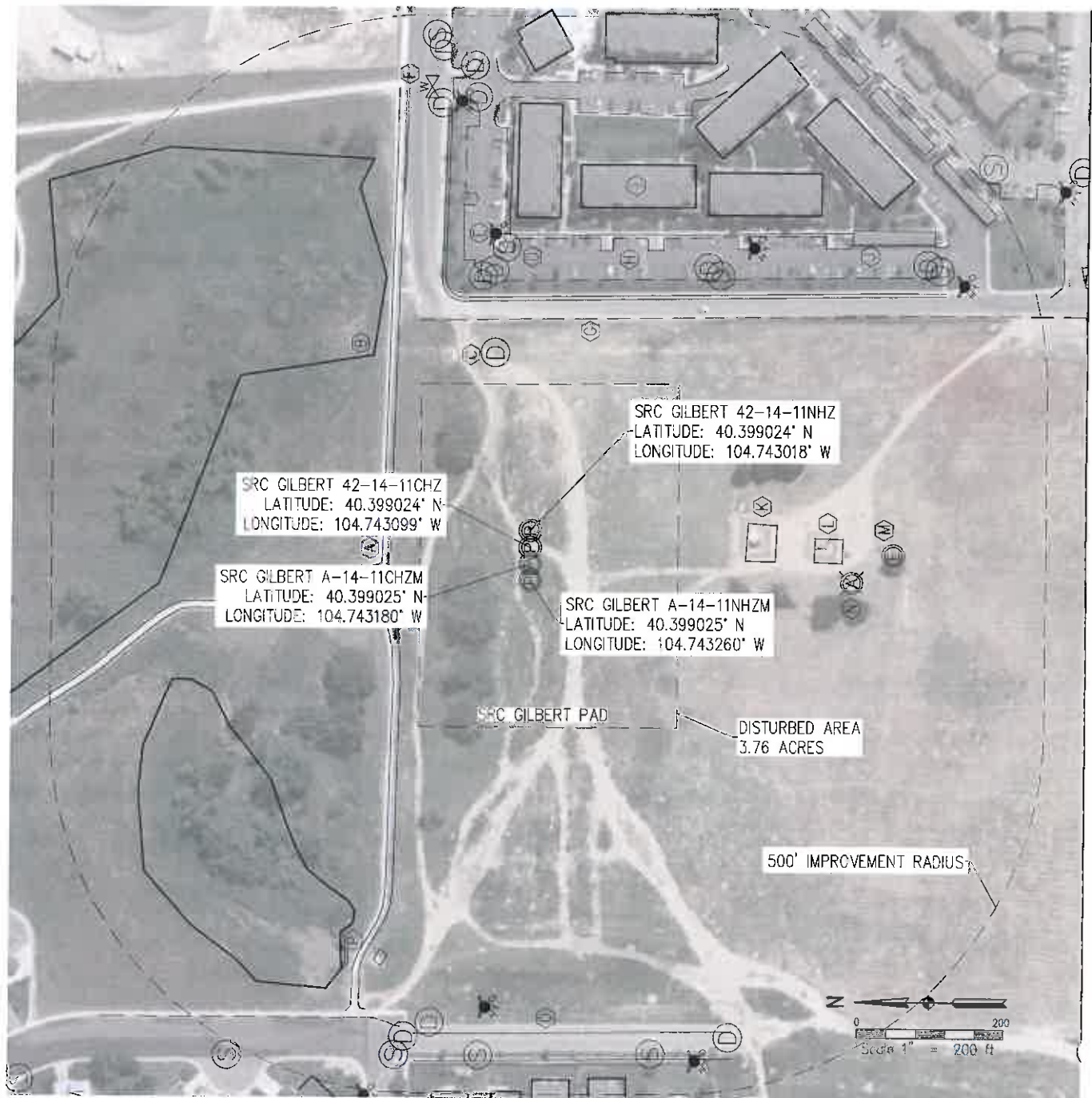


## LOCATION DRAWING

SRC GILBERT PAD

SECTION 14  
TOWNSHIP 5 NORTH  
RANGE 66 WEST

NEAREST: BUILDING 586' SE, BUILDING UNIT 427' E, HIGH OCCUPANCY BUILDING UNIT 1,614' SE, DESIGNATED OUTSIDE ACTIVITY AREA 5,280'+ PUBLIC ROAD 288' E, ABOVE GROUND UTILITY 2,294' E, RAILROAD 5,280'+, PROPERTY LINE 162' N

## IMPROVEMENTS:

- |  |   |  |
|--|---|--|
| (A) SIDEWALK: 190' N, 313' E, 398' E, 654' W   | (E) FIRE HYDRANT: 407' NE, 592' NE, 489' SE, 676 SE, 693' SW, 585' W  | (J) GARAGE: 586' SE, 735' SE, 739' SE, 751' SE |
| (B) WET AREA: 321' NE, 444' NW   | (F) WATER VALVE: 619' NE  | (K) TANK: 294' S                               |
| (C) DRAINAGE MANHOLE: 248' NE, 353' NE, 358' NE, 595' NE, 595' NE, 638 NE, 670 NE, 431' SE, 432 SE, 648 SE, 657 SE, 679 SW, 617' NW, 645' NW | (G) 38TH AVE: 288' E  | (L) SEPARATOR: 386' S                          |
| (D) SANITARY MANHOLE: 387' NE, 687' NE, 666 SW, 651' W, 672' NW  | (H) PARKING LOT: 341' E   | (M) EXISTING WELL: 493' S                      |
|  | (I) BUILDING UNIT: 427' E, 626' E, 445' SE, 491' SE, 568' SE, 646' SE, 647' SE, 681' W, 697' W, 702' W, 683' W, 735' NW | (N) ABANDONED WELL: 438' S                     |
|  |   | (O) 42ND AVE: 617' W                           |
|  |   | (P) CULVERT: 542' NW                           |

ALL DISTANCES ARE  
MEASURED FROM  
NEAREST WELL

## NOTE

The size, type and location of underground utilities shown hereon are approximate, and are based on markings made by utility locate companies. It is not guaranteed that all utilities have been located. It shall be the responsibility of the contractor to verify the existence of all underground utilities in the area of the work before commencing new construction.