

REHDER X 6-14

Existing Features	
KB	9

Surface csg shoe at	778
---------------------	-----

Bottom of Foxhills (FHM)	1296
--------------------------	------

Sussex Top	4397
------------	------

Sussex Base	4685
-------------	------

Shannon	Absnt
NOT producing w/in 1 mile	

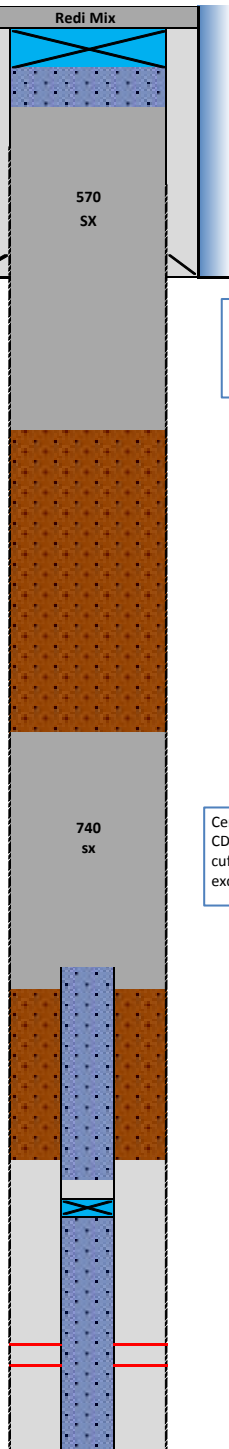
TOC Cement existing (CBL)	6780
---------------------------	------

CIBP + 2 sk (Set 8/28/02)	7007
---------------------------	------

Niobrara Top	7071
--------------	------

Geologic Top		7354
Codell	Perf Top	7357
	Perf Bottom	7367

PBMD	7480
2-7/8" 6.5# CSG	7522



Proposed Additions for P&A

80	CIBP (8-5/8")
----	---------------

550	TOC
-----	-----

Cement Blend: Type III w/ cello flake and CaCl₂, mixed at 14.8 ppg and 1.33 cuft/sk. Volume based on an 11" OH with 40% and 8 5/8" csg. Caliper on file.

1500	Bottom of cement
------	------------------

4200	Top of cement
------	---------------

Cement Blend: "G" w/ 0.25 pps cello flake, 0.4% CD-32, 0.4% ASA - 301, mixed at 15.8 ppg and 1.15 cuft/sk. Volume based on a 10.5" with 20% excess. Caliper on file.

5200	Casing Stub
------	-------------

5300	Bottom of cement
------	------------------

API#	0512315759			
Well:	REHDER X 6-14 (H8959)			
Equipment	Specs.	Depth	Capacity (bbl/ft)	Capacity ft ³ /ft
Surface Casing	8 5/8" 24#	314	0.0637	0.3576
Production Casing	2 7/8" (6.5#)	7522	0.0058	0.0325
Tubing Size	N/A	N/A	N/A	N/A
Bit Size	7 7/8	N/A	0.0602	0.3382
Hole Size (TOP)	11	N/A	0.1175	0.6600
Hole Size (SH/SU)	10.5	N/A	0.1071	0.6013

Cement Calculations				
Section	Volume cu-ft	Cement Sacks	Excess	
Surface csg.	81.53	61.30		11 in hole
Open Hole	667.08	501.56	40%	
Prod. Csg. Annulus				
Total Top Plug	748.61	562.87	570	
Open Hole	791.94	688.65	20%	10.5 in hole
Prod. Csg. Annulus	55.62	48.37		
Total	55.62	48.37	740	

Cement Yield	1.33	1.15
Top Plug	SX/SH	

Legend	
	Existing cement with CBL
	New cement
	assumed cement w/ no CBL
	cast iron cement retainer
	cast iron bridge plug
	mud
	2% KCL Water