



**Chevron
U.S.A., Inc.**

WELL NO.: M.C. HAGOOD A-1
(0609)
FIELD . . . : RANGELY, CO.

SURVEY DATA

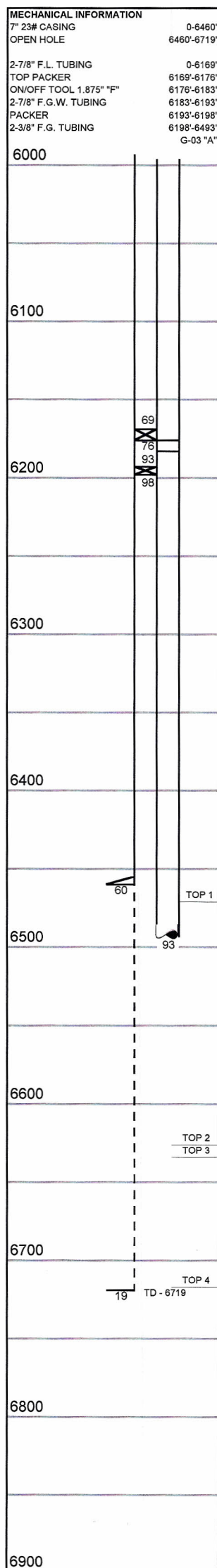
REMARKS

RUN NO. 6

SURVEY TYPE . . .	T-S-T	SURFACE TEMP . .	116.0 F
DATE	12/11/2014	BHT	123.3 F
METERED RATE . .	2500 B/D	TBG PRESSURE . .	1250 PSI
MEASURED RATE:	2591 B/D	CSG PRESSURE . .	0 PSI
DESIRED RATE . .	N/A	PICK-UP	GDA (6450')
SERVICE CO. . .	PLS	INJ. FLUID	H2O

R/A TRACER INDICATES CASING SHOE AND
PACKERS OK.
RECORDED BY: MATT STRATTON
COMPLIANCE SURVEY

INJECTION PROFILE



COMPLIANCE

NOTE: "PARKED" TOOLS @ 6450', PUT OUT A LARGE SLUG OF I-131, WAITED 10 MINUTES. NO SIGN OF FLUID MOVING UPWARD. "PARKED" TOOLS ABOVE TOP PACKER @ 6030', PUT OUT A LARGE SLUG OF I-131 WAITED 15 MINUTES. NO SIGN OF FLUID MOVING UPWARD.

COMPLIANCE SURVEY G.D.A. @ 6450'.
R/A TRACER INDICATED CASING SHOE
AND PACKERS OKAY.

PERCENTAGE INJECTED INTO
ZONE

ZONE 1
6471-6626

(63% EXITS @/BELOW TDL @ 6608') 100%

COMPLIANCE

COMPLIANCE

ZONE 2
6626-6634

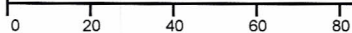
0% COMPLIANCE COMPLIANCE

ZONE 3
6634-6717

0% COMPLIANCE COMPLIANCE

ZONE 4
6717-6719

0% COMPLIANCE COMPLIANCE



 Run #4: 2/7/2007
(Red Indicates a CO₂ Run)

Run #5: 8/23/2013

Run #6: 12/11/2014

TEMPERATURES (F°)

DATE	RUN #4 2/7/2007	RUN #5 8/23/2013	RUN #6 12/11/2014
SURFACE	91.5	117.0	116.0
GDA (6450)	135.4	123.3	123.3
6471-6626	---	---	---
6626-6634	---	---	---
6634-6717	---	---	---
6717-6719	---	---	---
RATE (B/D)	3165	1875	2591
PRESS (PSI)	1940	855	1250

#5