



WELL NO.: S.A. GUIBERSON A-001
(3407)
FIELD: RANGELY, CO.

SURVEY DATA

RUN NO. 4

SURVEY TYPE . . .	T-S-T	SURFACE TEMP . .	95.2 F
DATE	12/9/2014	BHT	115.6 F
METERED RATE . .	864 B/D	TBG PRESSURE . .	460 PSI
MEASURED RATE . .	679 B/D	CSG PRESSURE . .	0 PSI
DESIGNED RATE . .	N/A	PICK-UP	6358'
SERVICE CO. . . .	PLS	INJ. FLUID	H2O

REMARKS

R/A TRACER INDICATES PACKERS AND CASING
SHOE OK.

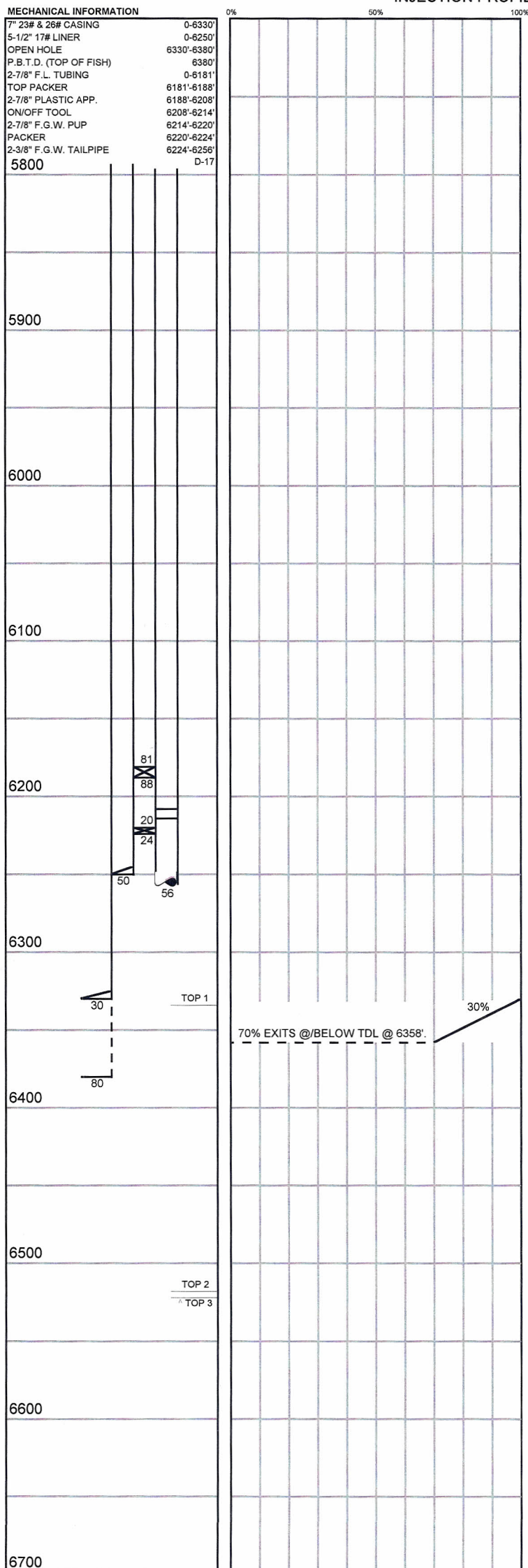
RECORDED BY: MATT STRATTON

12/8/14. RAN 1.75" G/R TO 6358'±: NO PROBLEMS.

INJECTION PROFILE

MECHANICAL INFORMATION

7" 23# & 26# CASING	0-6330'
5-1/2" 17# LINER	0-6250'
OPEN HOLE	6330'-6380'
P.B.T.D. (TOP OF FISH)	6380'
2-7/8" F.L. TUBING	0-6181'
TOP PACKER	6181'-6188'
2-7/8" PLASTIC APP.	6188'-6208'
ON/OFF TOOL	6208'-6214'
2-7/8" F.G.W. PUP	6214'-6220'
PACKER	6220'-6224'
2-3/8" F.G.W. TAILPIPE	6224'-6256'
5800	D-17



PERCENTAGE INJECTED INTO
ZONE

ZONE 1
6334-6518

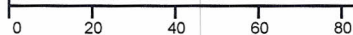
(60% EXITS @/BELOW TDL @6360') 100%

ZONE 2
6518-6522

0%
0%
0%

ZONE 3
6522

0%
0%
0%



 Run #2: 7/26/2005
(Red Indicates a CO₂ Run)

Run #3: 10/30/2013

Run #4: 12/9/2014

TEMPERATURES (F°)

DATE	RUN #2 7/26/2005	RUN #3 10/30/2013	RUN #4 12/9/2014
SURFACE	85.1	93.1	95.2
6334-6518	---	---	---
TDL (6358)	133.0	107.8	115.6
6518-6522	---	---	---
6522	---	---	---
RATE (B/D)	970	1244	679
PRESS (PSI)	1750	1680	460