

-06149



**Chevron
U.S.A., Inc.**

WELL NO.: FEE 51
(3419)
FIELD : RANGELY, CO.

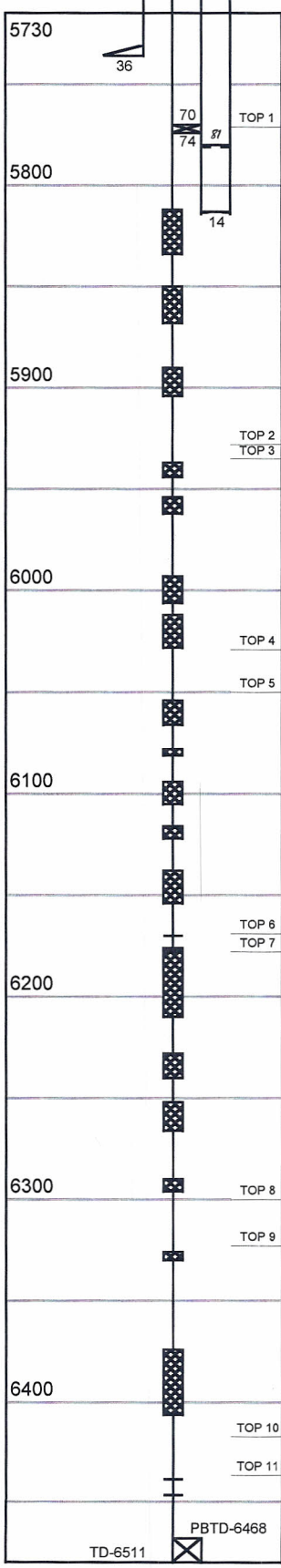
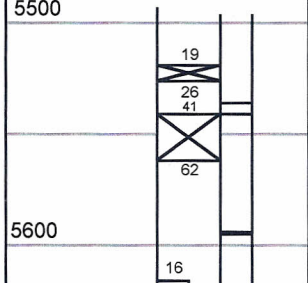
SURVEY DATA

REMARKS

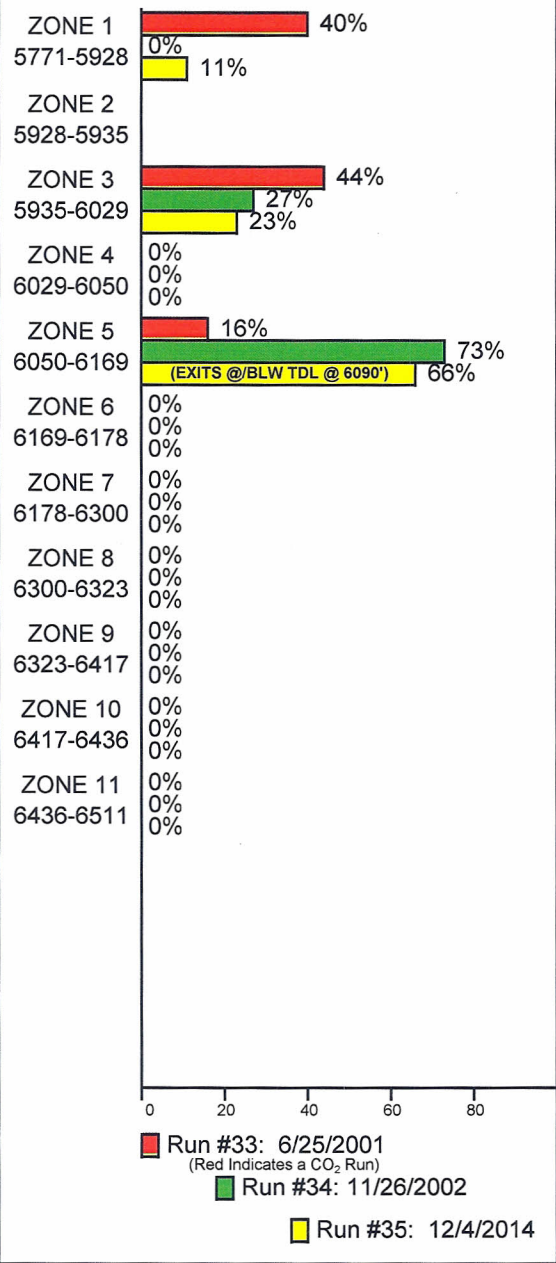
RUN NO. 35		
SURVEY TYPE : T-S-T	SURFACE TEMP : 89.0 F	R/A TRACER INDICATES TOP PERF AND PACKERS OK. RECORDED BY: RORY ANDREWS 12/3/14, RAN 1.75" G/R TO 6078±; BEAT THROUGH TIGHT SPOT @ 6030'. UNABLE TO GET ANY DEEPER.
DATE : 12/4/2014	BHT : 117.8 F	
METERED RATE : 1000 B/D	TBG PRESSURE : 1690 PSI	
MEASURED RATE: 999 B/D	CSG PRESSURE : 0 PSI	
DESIRED RATE : N/A	PICK-UP : 6090'	
SERVICE CO. : PLS	INJ. FLUID : H2O	

INJECTION PROFILE

MECHANICAL INFORMATION	
7" 23# CASING	0-5736'
5" 18# LINER	5616'-6511'
P.B.T.D.	6468'
2-7/8" F.L. TUBING	0-5519'
SLICK ON/OFF 1.875" "F"	5536'-5541'
2 7/8 X2-3/8 X-OVER	5594'-5595'
2-3/8 F.G.W. TUBING	5595'-5770'
1.875" X NIPPLE	5780'-5781'
W LEG	5814'
	J-17



PERCENTAGE INJECTED INTO ZONE



TEMPERATURES (F°)

DATE	RUN #33 6/25/2001	RUN #34 11/26/2002	RUN #35 12/4/2014
SURFACE	91.4	92.7	89.0
5771-5928	---	---	---
5928-5935	---	---	---
5935-6029	---	---	---
6029-6050	---	---	---
6050-6169	---	---	---
TDL (6090)	127.7	119.8	117.8
6169-6178	---	---	---
6178-6300	---	---	---
6300-6323	---	---	---
6323-6417	---	---	---
6417-6436	---	---	---
6436-6511	---	---	---
RATE (B/D)	N/A	1500	999
PRESS (PSI)	2000	1750	1690