

-09285



Chevron
U.S.A., Inc.

WELL NO.: EMERALD 7A
(A3023)
FIELD : RANGELY, CO.

SURVEY DATA

REMARKS

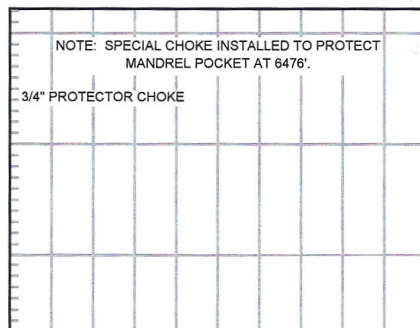
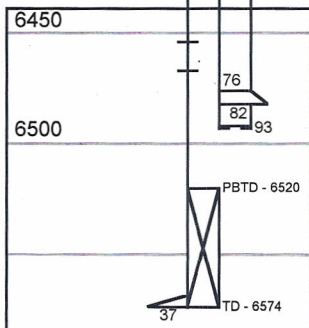
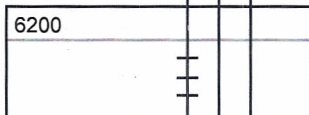
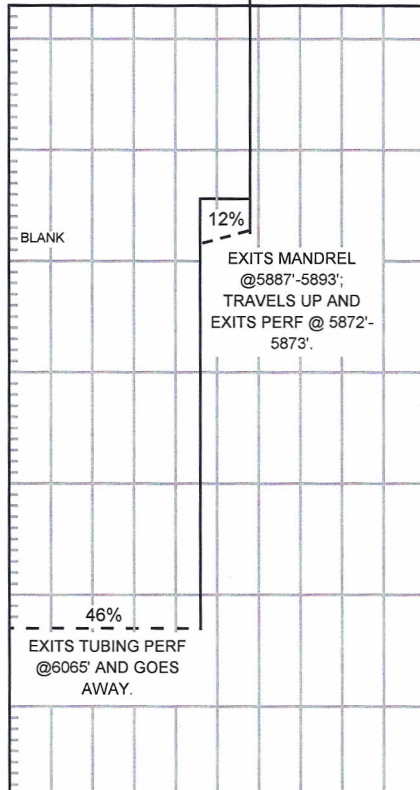
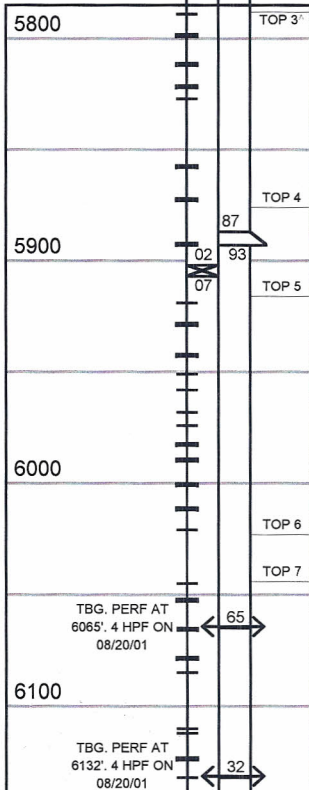
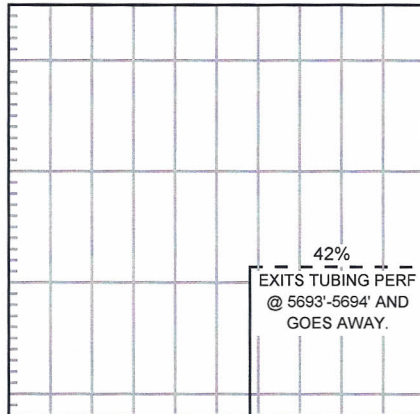
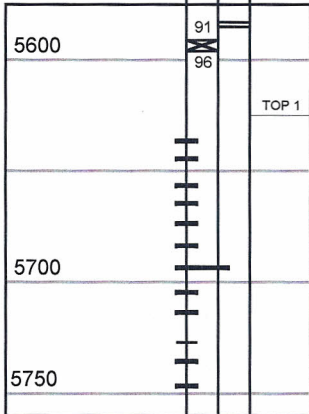
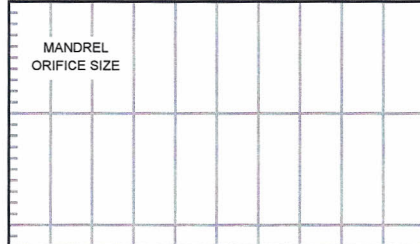
RUN NO. 43		
SURVEY TYPE : T-S-T	SURFACE TEMP : 85.2 F	R/A TRACER INDICATES TOP PERF & PACKER OK. RECORDED BY: MATT STRATTON
DATE : 12/8/2014	BHT : 147.8 F	
METERED RATE : 1630 B/D	TBG PRESSURE : 1330 PSI	
MEASURED RATE: 1520 B/D	CSG PRESSURE : 0 PSI	
DESIRED RATE : N/A	PICK-UP : 6297'	
SERVICE CO. : PLS	INJ. FLUID : H2O	

INJECTION PROFILE

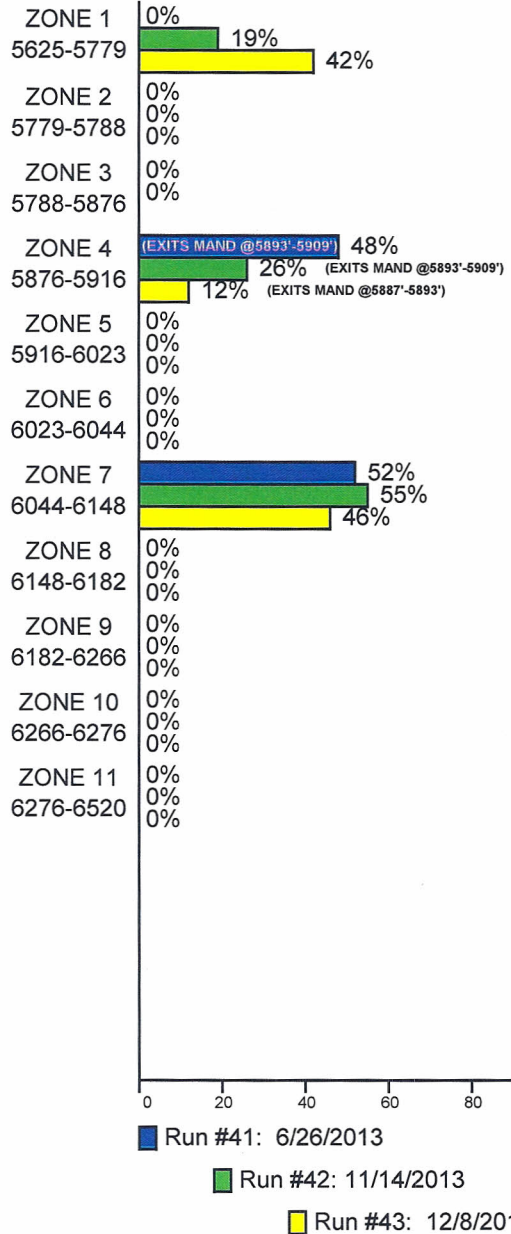
MECHANICAL INFORMATION

7" 23# CASING	0-6574'
P.B.T.D.	6520'
2-7/8" DUOLINE TUBING	0-5482'
TOP PACKER	5482'-5489'
2-7/8" FGW TUBING	5489'-5583'
ON/OFF TOOL 1.875" "X"	5583'-5585'
2-3/8" FGW&INT COATED	5585'-5591'
BOTTOM PACKER	5902'-5907'
"XN" NIPPLE	6492'-6493'
	L-15 "B"

0% 50% 100%



PERCENTAGE INJECTED INTO ZONE



TEMPERATURES (F°)

DATE	RUN #41 6/26/2013	RUN #42 11/14/2013	RUN #43 12/8/2014
SURFACE	98.7	74.0	85.2
5625-5779	---	---	---
5779-5788	---	---	---
5788-5876	---	---	---
5876-5916	---	---	---
5916-6023	---	---	---
6023-6044	---	---	---
6044-6148	---	---	---
6148-6182	---	---	---
6182-6266	---	---	---
6266-6276	---	---	---
6276-6520	---	---	---
TDL (6297)	155.0	156.0	147.8
RATE (B/D)	1040	633	1520
PRESS (PSI)	1100	1350	1330