

1:600 / 1:240

WELL INFORMATION					
MWD Run Number	100	200			
Date run completed	27-Mar-14	28-Mar-14			
Rig Bit Number	2	3			
Bit Size (in)	8.750	8.750			
Tool Nominal OD (in)	6.800	6.800			
Log Start Depth (MD, ft)	645.00	5,883.00			
Log End Depth (MD, ft)	5,883.00	6,923.00			
Drill or Wipe	Drill	Drill			
Drill/Wipe Start Date and Time	26-Mar-14 09:11	17-Mar-14 16:38			
Drill/Wipe End Date and Time	27-Mar-14 03:56	28-Mar-14 05:58			
Min Inc (deg) @ Depth (MD, ft)	0.15 @ 718.00	1.06 @ 5,888.00			
Max Inc (deg) @ Depth (MD, ft)	1.84 @ 4,396.00	86.61 @ 6,868.00			
Bit TFA(in2) / Bit Type	0.75 / PDC	0.75 / PDC			
Flow Rate (gpm)	593.97	586.68			
Max AV (fpm) / CV (fpm) @ MWD	NA / NA	NA / NA			
Fluid Type	Fresh Water Gel	Fresh Water Gel			
Density (ppg) / Viscosity (spqt)	8.70 / 33.00	10.15 / 37.00			
Filtrate CL (ppm)	1,400.00	2,100.00			
pH / Fluid Loss (mptm)	11.40 / 31	9.10 / 8			
PV (cP) / YP (lbf2)	4 / 7.00	9 / 8.00			
% Solids / % Sand	2.60 / 1.50	12.00 / 0.15			
% Oil / Oil:Water Ratio	NA / NA	NA / NA			
Rm @ Measured Temp (degF)	NA @ NA	NA @ NA			
Rmf @ Measured Temp (degF)	NA @ NA	NA @ NA			
Rmc @ Measured Temp (degF)	NA @ NA	NA @ NA			
Max Tool Temp (in F) / S	141.78 / PDM	151.88 / PDM			

Max Tool Temp (degF) / Source	141.70 / PCM	154.30 / PCM			
Rm @ Max Tool Temp (degF)	NA @ 141.70	NA @ 154.30			
Lead MWD Engineer	Kyle Wass	Kyle Wass			
Customer Representative	Jim Turner	Stetson Nielsen			

SENSOR INFORMATION

Downhole Processor Information

Tool Type	PCM	PCM			
Software Version	5.84	5.84			
Sub Serial Number	245494	245494			
Insert Serial Number	11400842	11400842			
Date and Time Initialized	25-Mar-14 19:03	25-Mar-14 19:03			
Date and Time Read	28-Mar-14 14:11	28-Mar-14 14:11			
ECMB SW Version	N/A	N/A			

Directional Sensor Information

Tool Type	PCDC	PCDC			
Distance From Bit (ft)	57.00	55.00			
Software Version	6.21	6.21			
Sub Serial Number	245494	245494			
Sonde Serial Number	11478014	11478014			
Sensor ID Number	N/A	N/A			
Toolface Offset (deg)	76.70	323.25			

Gamma Ray Sensor Information

Tool Type	PCG	PCG			
Distance From Bit (ft)	49.70	47.99			
Recorded Sample Period (sec)	10	10			
Software Version	8.15	8.15			
Sub Serial Number	245494	245494			
Insert/Sonde Serial Number	11681051	11681051			

REMARKS

1. All depths are calibrated to driller's pipe tally and are true vertical depth from the Drill Floor.
2. No depth corrections have been made for pipe stretch or compression.
3. Critical annular velocities are calculated using the "Power Law" model for water based fluids and the "Brigham Plastic" model for oil and synthetic based fluids.
4. All data presented is recorded data unless otherwise specified.
5. The following smoothing parameters have been applied to the data:
 - 1: 600 Log
PGRC (Gamma CG) and ROPA (Average Rate of Penetration)
Interval Resolution: 1.0 ft
Interval Distance: 3.0 ft
 - 1: 240 Log
PGRC (Gamma CG):
Interval Resolution: 0.5 ft
Interval Distance: 0.6 ft
 - ROPA (Average Rate Of Penetration):
Interval Resolution: 0.5 ft

Interval Resolution: 0.5 ft
Interval Distance: 1.2 ft

6. Insite Version V8.0.10

WARRANTY

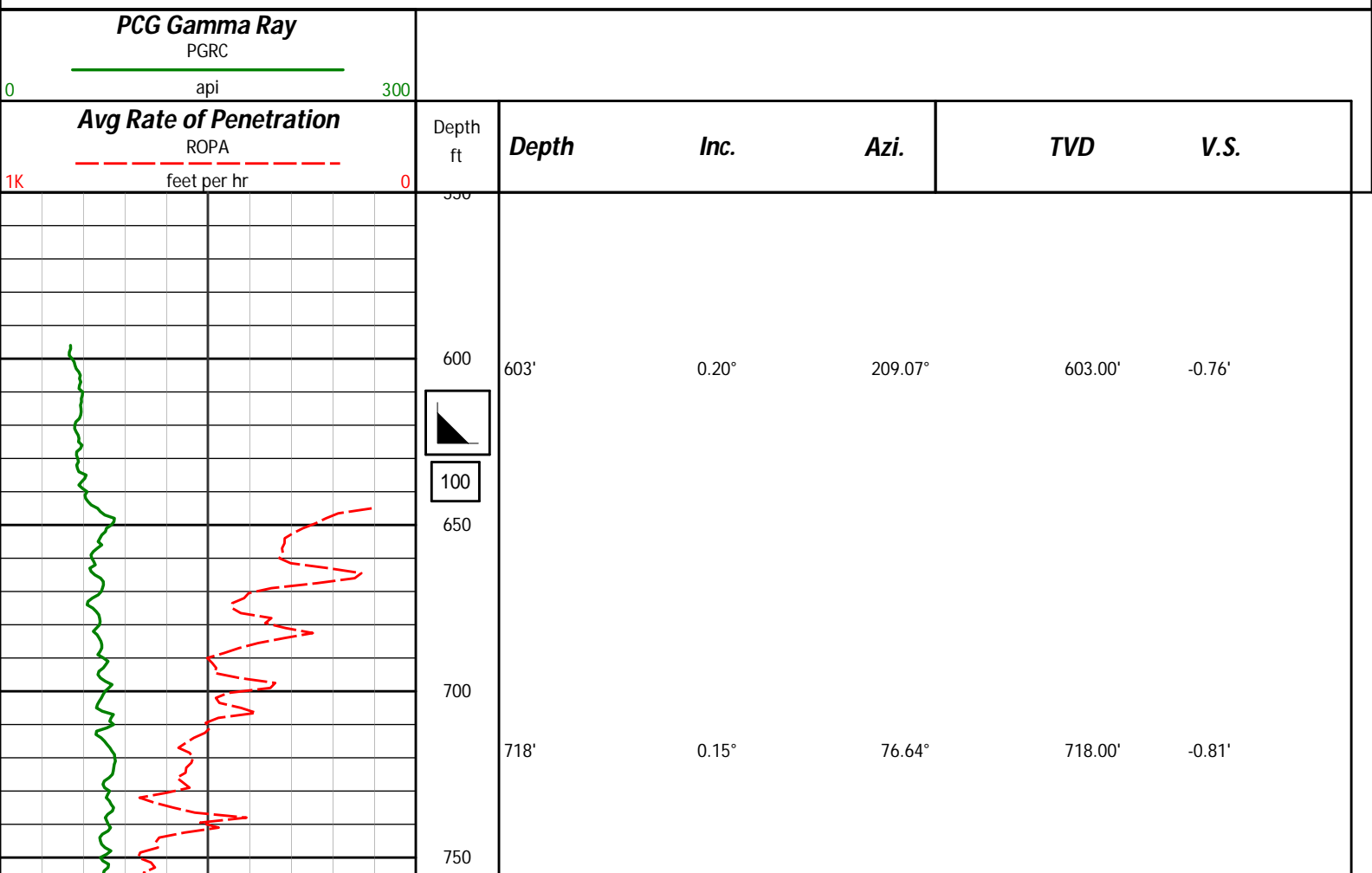
HALLIBURTON WILL USE ITS BEST EFFORTS TO FURNISH CUSTOMERS WITH ACCURATE INFORMATION AND INTERPRETATIONS THAT ARE PART OF, AND INCIDENT TO, THE SERVICES PROVIDED. HOWEVER, HALLIBURTON CANNOT AND DOES NOT WARRANT THE ACCURACY OR CORRECTNESS OF SUCH INFORMATION AND INTERPRETATIONS. UNDER NO CIRCUMSTANCES SHOULD ANY SUCH INFORMATION OR INTERPRETATION BE RELIED UPON AS THE SOLE BASIS FOR ANY DRILLING, COMPLETION, PRODUCTION, OR FINANCIAL DECISION OR ANY PROCEDURE INVOLVING ANY RISK TO THE SAFETY OF ANY DRILLING VENTURE, DRILLING RIG OR ITS CREW OR ANY OTHER THIRD PARTY. THE CUSTOMER HAS FULL RESPONSIBILITY FOR ALL DRILLING, COMPLETION AND PRODUCTION OPERATION. HALLIBURTON MAKES NO REPRESENTATIONS OR WARRANTIES, EITHER EXPRESSED OR IMPLIED, INCLUDING, BUT NOT LIMITED TO, THE IMPLIED WARRANTIES OF MERCHANTABILITY OR FITNESS FOR A PARTICULAR PURPOSE, WITH RESPECT TO THE SERVICES RENDERED. IN NO EVENT WILL HALLIBURTON BE LIABLE FOR FAILURE TO OBTAIN ANY PARTICULAR RESULTS OR FOR ANY DAMAGES, INCLUDING, BUT NOT LIMITED TO, INDIRECT, SPECIAL OR CONSEQUENTIAL DAMAGES, RESULTING FROM THE USE OF ANY INFORMATION OR INTERPRETATION PROVIDED BY HALLIBURTON.

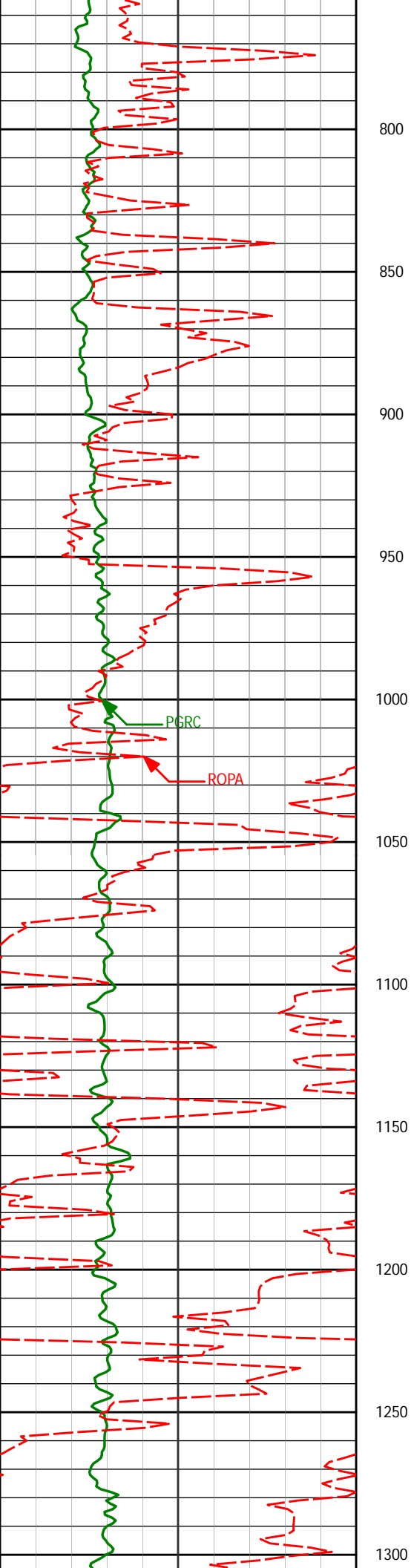
HALLIBURTON

Sperry Drilling Services

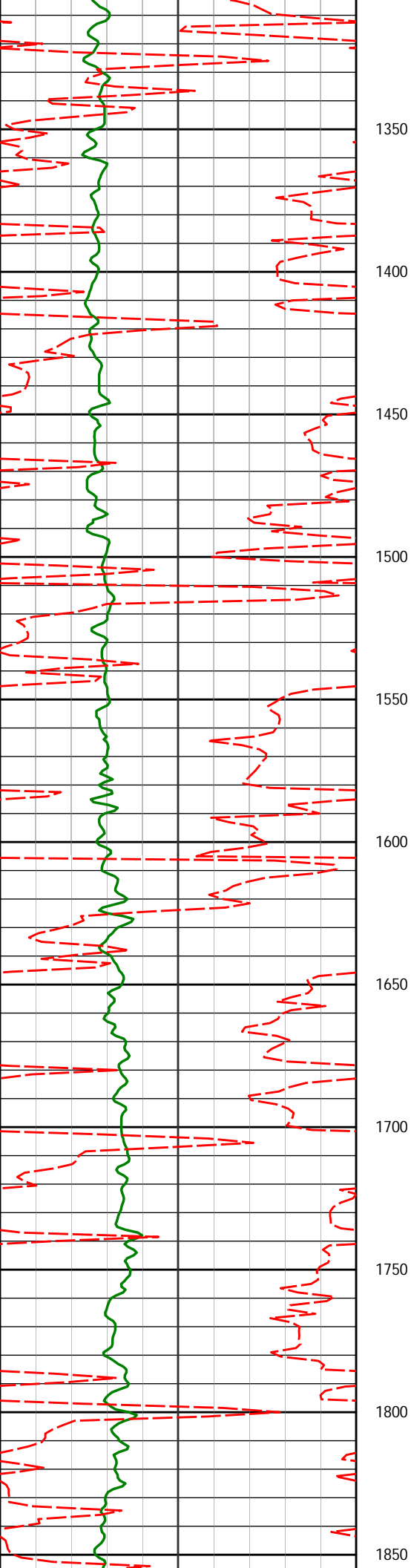
TVD Correlation Log 1:600

Noble Energy
Wells Ranch AE30-64HNC
H&P 321
Sec. 29-T6N-R62W

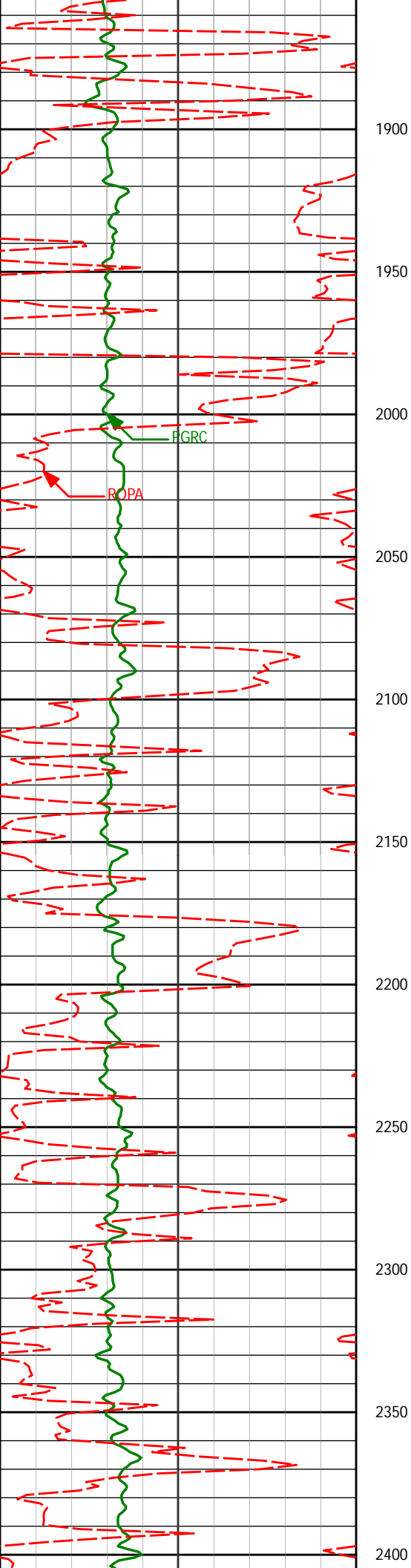




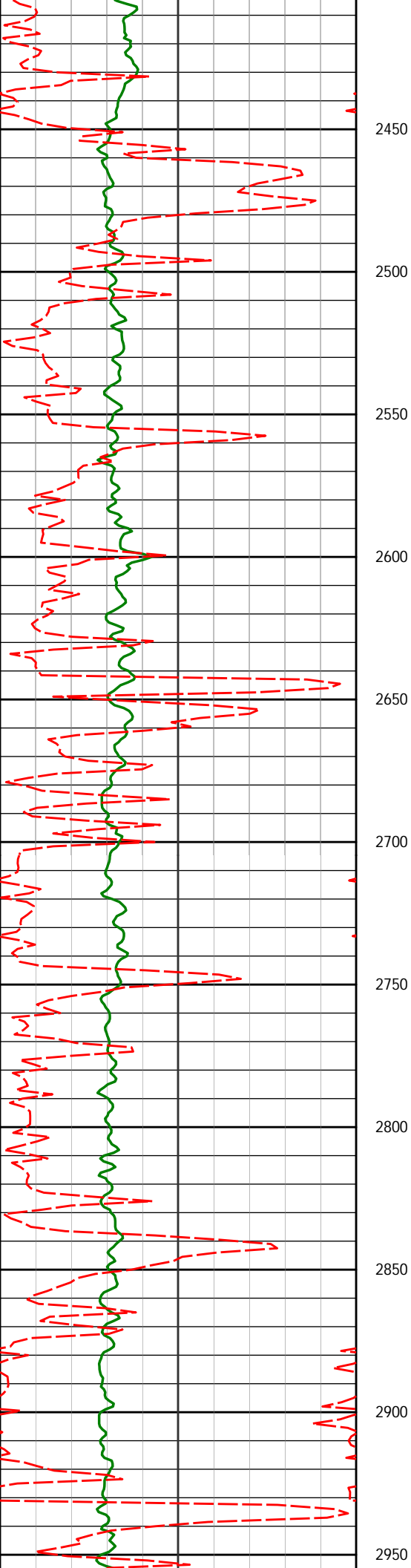
810'	0.31°	124.68°	810.00'	-1.13'
902'	0.41°	112.74°	901.99'	-1.63'
994'	0.55°	125.96°	993.99'	-2.29'
1085'	0.79°	134.79°	1084.99'	-3.07'
1178'	0.96°	135.49°	1177.97'	-4.06'
1271'	0.52°	67.68°	1270.97'	-4.99'



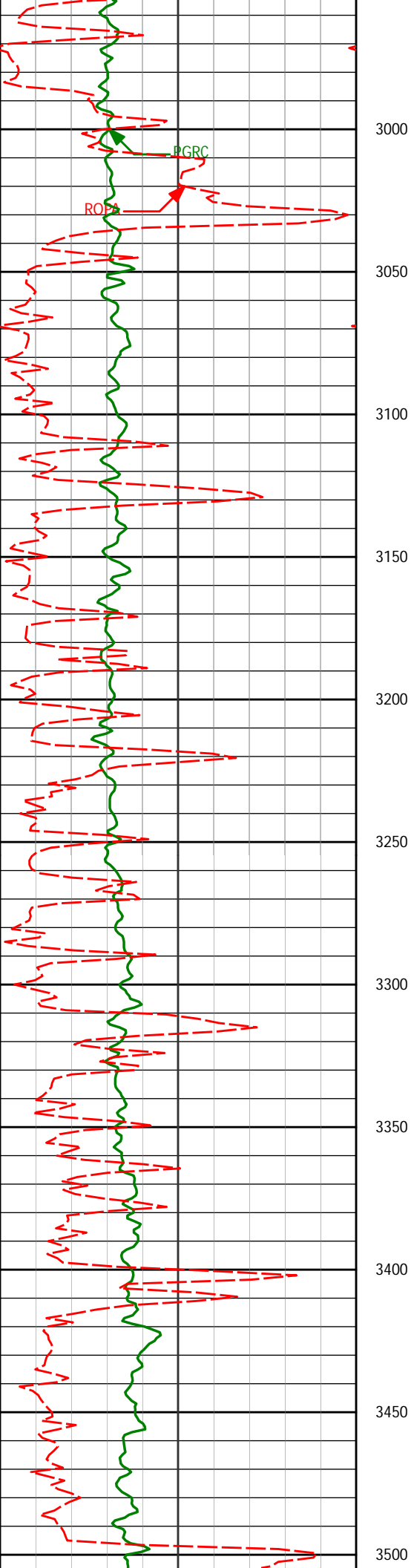
1364'	0.70°	70.48°	1363.96'	-5.92'
1458'	0.79°	69.61°	1457.95'	-7.08'
1553'	0.82°	68.97°	1552.95'	-8.33'
1648'	0.56°	305.89°	1647.94'	-8.60'
1742'	0.62°	313.25°	1741.94'	-7.87'
1837'	0.92°	277.78°	1836.93'	-6.74'



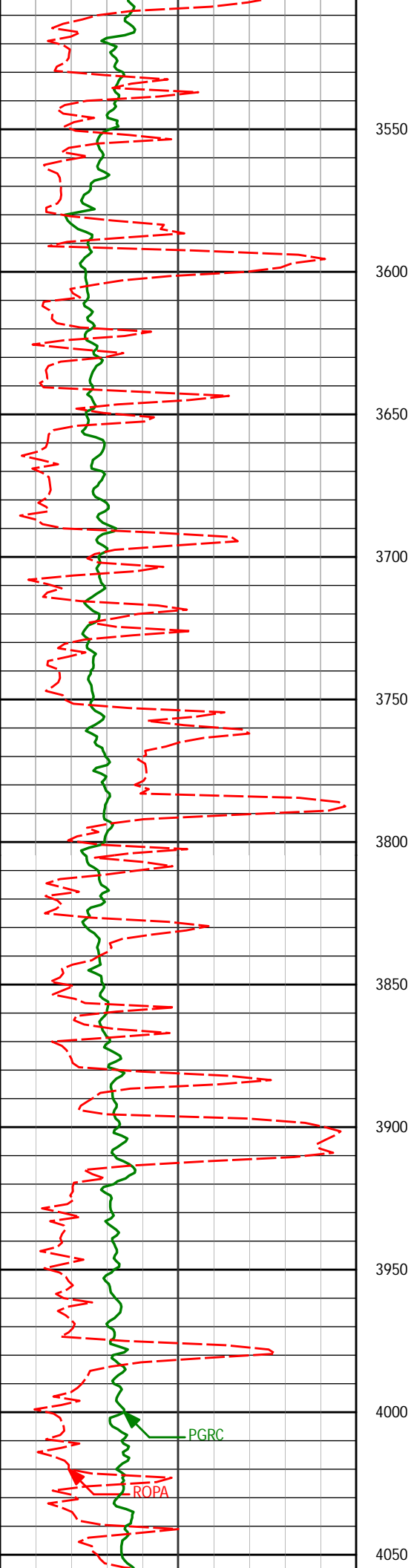
1900				
1932'	1.27°	293.44°	1931.91'	-5.03'
1950				
2000				
2026'	1.24°	255.60°	2025.89'	-3.09'
2050				
2100				
2120'	1.48°	240.09°	2119.86'	-1.04'
2150				
2200				
2215'	0.99°	141.28°	2214.85'	-0.47'
2250				
2300				
2310'	1.05°	148.64°	2309.83'	-1.41'
2350				
2400				



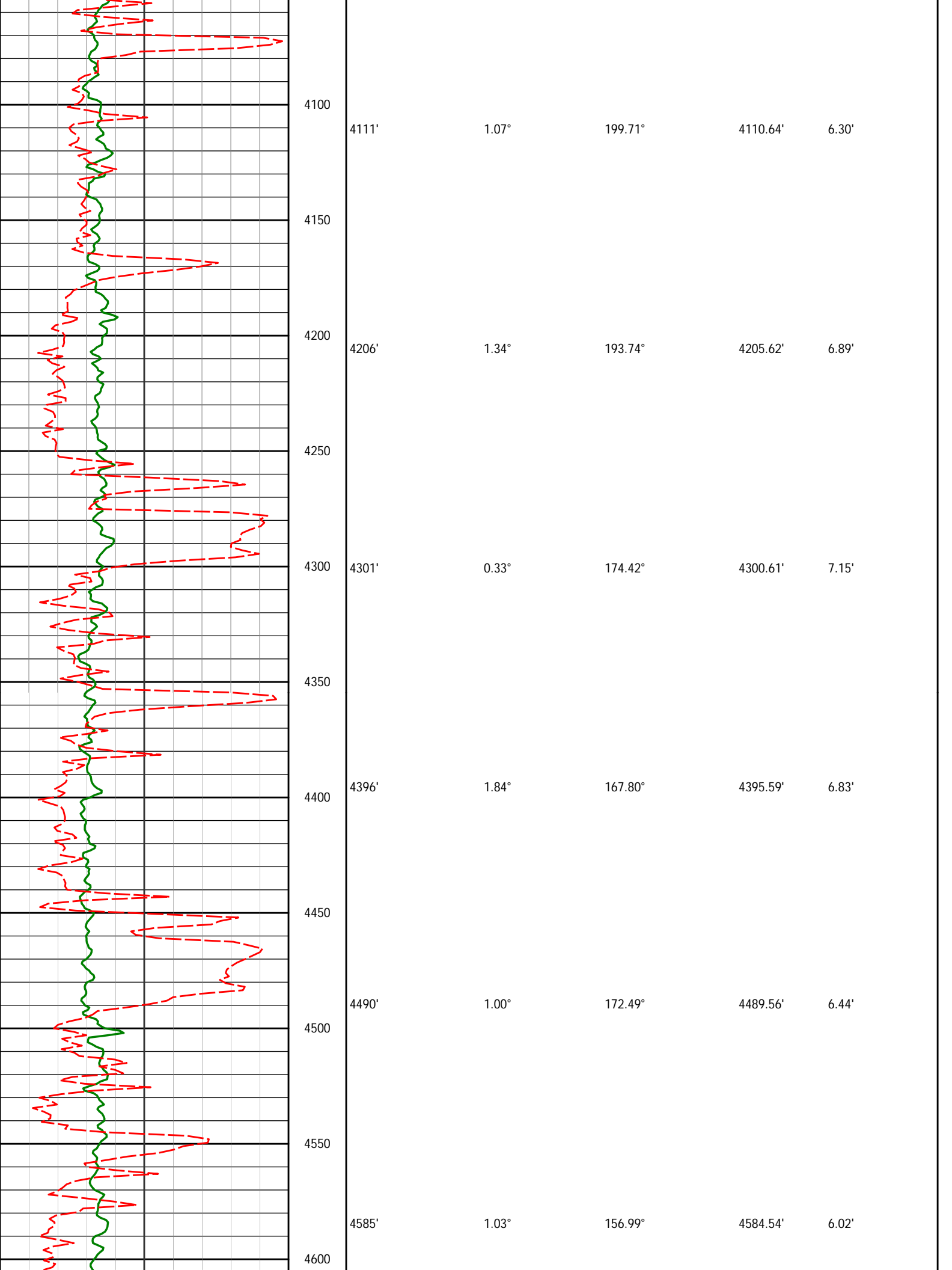
2403	1.26	166.02	2404.62	-2.09
2499'	0.57°	341.64°	2498.81'	-2.19'
2594'	0.92°	1.21°	2593.80'	-2.07'
2689'	0.85°	345.84°	2688.79'	-1.94'
2784'	0.94°	352.24°	2783.78'	-1.68'
2879'	0.99°	3.70°	2878.77'	-1.66'

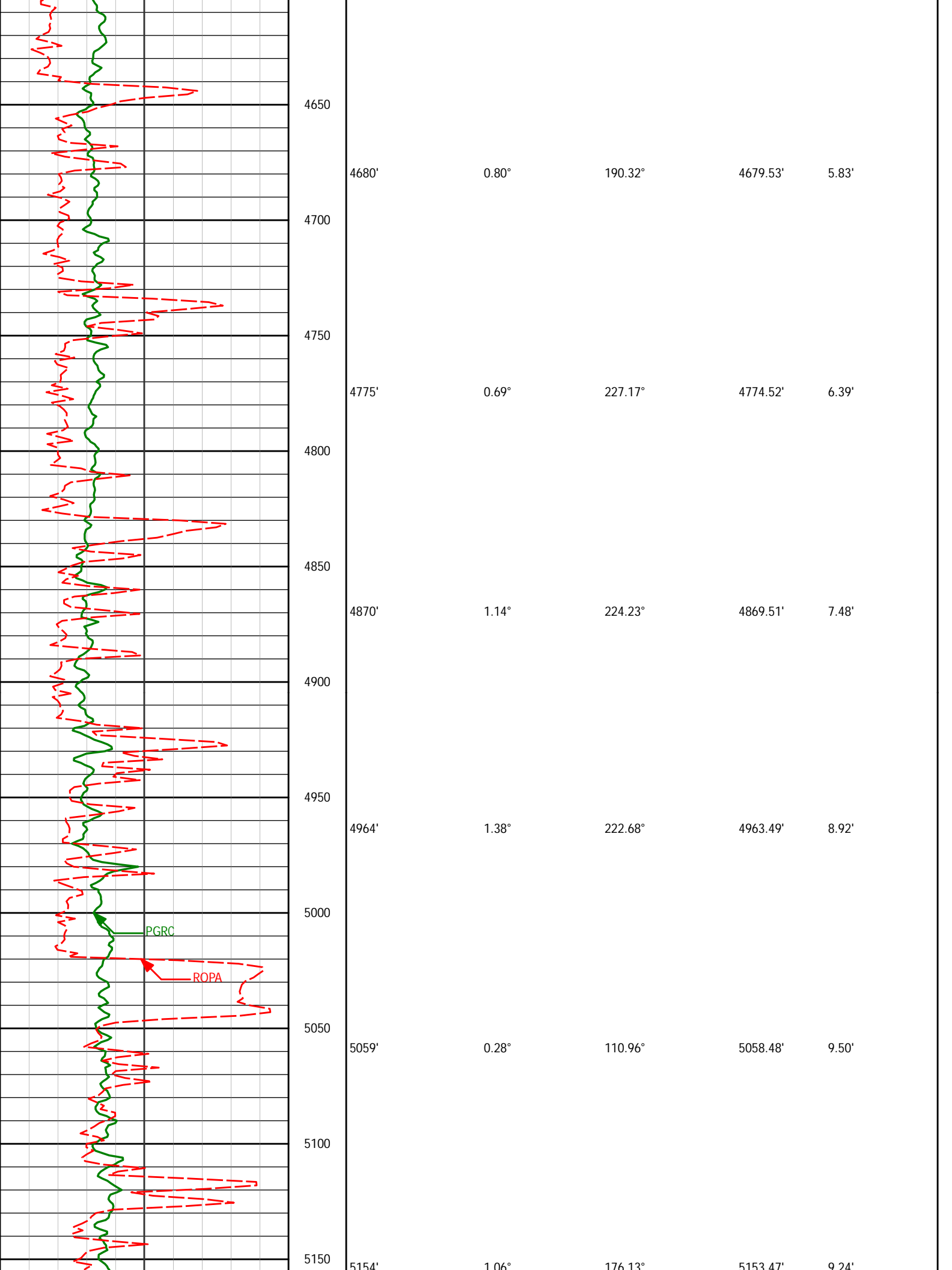


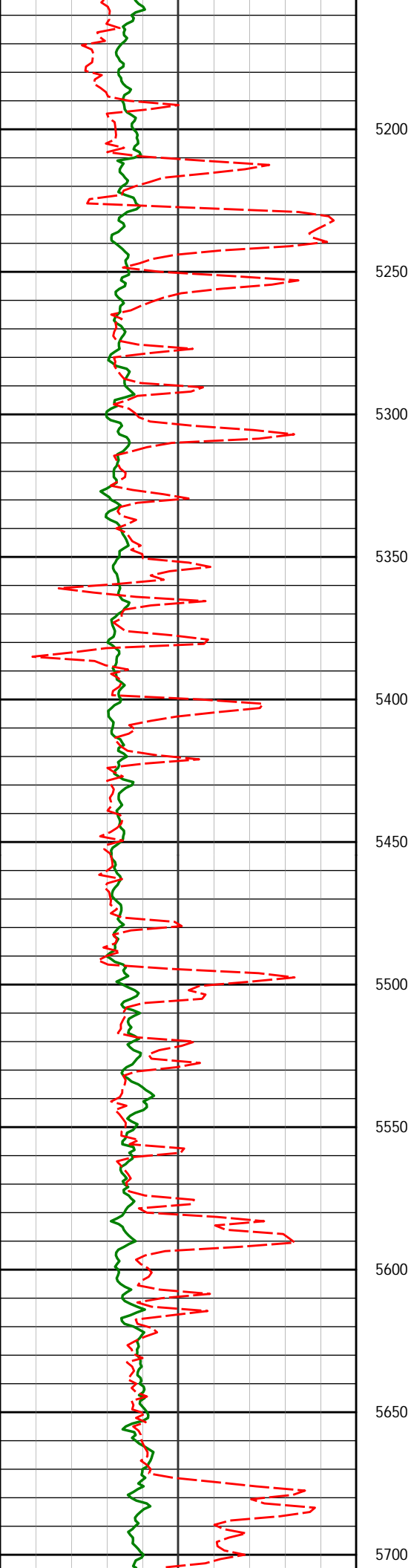
2974'	1.05°	8.94°	2973.75'	-1.87'
3000				
3068'	0.75°	2.98°	3067.74'	-2.06'
3100				
3163'	0.62°	9.54°	3162.73'	-2.20'
3200				
3258'	0.51°	24.01°	3257.73'	-2.47'
3300				
3352'	0.22°	244.98°	3351.73'	-2.48'
3400				
3447'	0.65°	322.13°	3446.72'	-1.99'
3500				



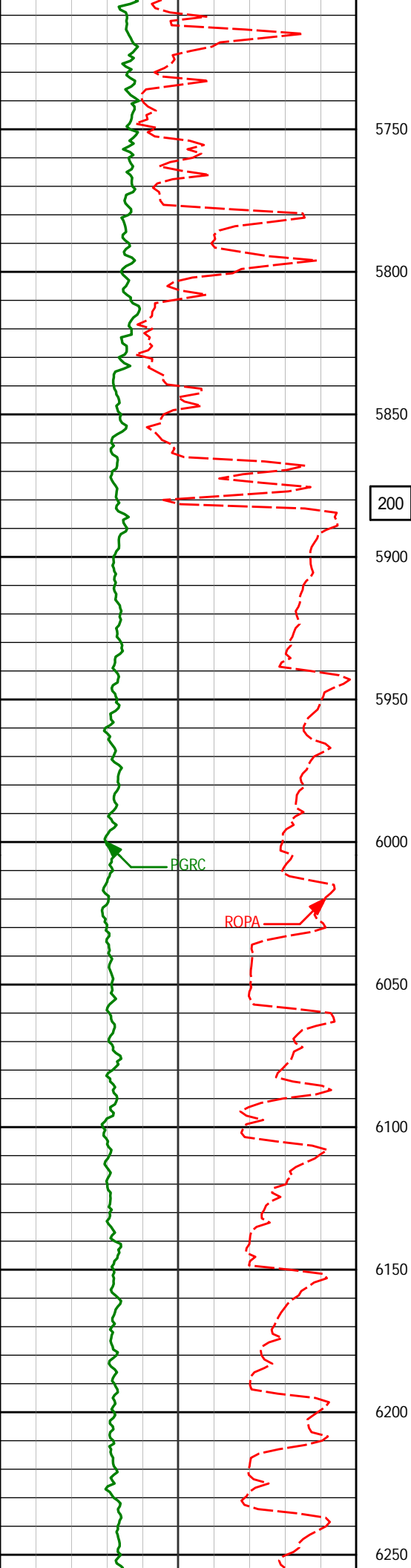
3542'	1.03°	307.40°	3541.71'	-1.00'
3637'	0.94°	305.56°	3636.70'	0.30'
3732'	1.05°	294.48°	3731.69'	1.71'
3827'	1.23°	298.08°	3826.67'	3.39'
3921'	0.50°	301.62°	3920.66'	4.62'
4016'	0.84°	225.90°	4015.65'	5.48'



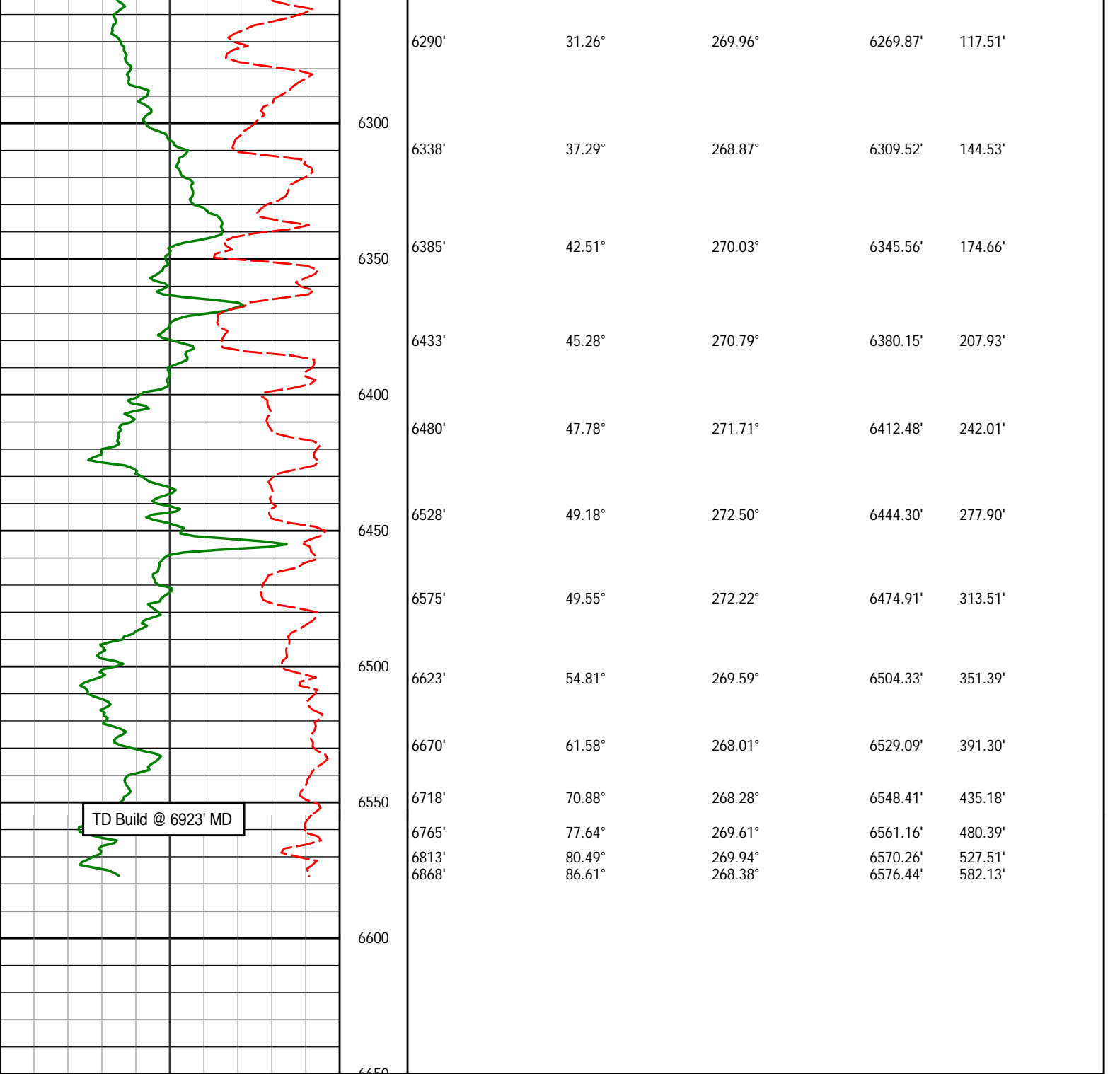




5248'	0.29°	21.30°	5247.47'	9.10'
5343'	0.60°	301.82°	5342.46'	9.43'
5438'	0.28°	24.07°	5437.46'	9.75'
5533'	0.66°	219.98°	5532.46'	10.01'
5628'	0.76°	217.25°	5627.45'	10.76'



5723'	1.02°	219.82°	5722.44'	11.70'
5750				
5800				
5826'	1.10°	222.11°	5825.42'	12.97'
5850				
5888'	1.06°	226.09°	5887.41'	13.80'
5900				
5950				
5959'	3.65°	258.98°	5958.35'	16.50'
6000	9.02°	267.02°	6000.02'	21.91'
6050				
6054'	10.85°	271.16°	6052.25'	30.43'
6100				
6101'	13.71°	273.80°	6098.17'	40.40'
6150				
6149'	20.06°	274.21°	6144.08'	54.29'
6196'	26.23°	271.35°	6187.28'	72.71'
6200				
6244'	28.28°	271.03°	6229.94'	94.68'
6250				



<div><div>Avg Rate of Penetration</div><div>ROPA</div><div>feet per hr</div></div>		Depth ft	Depth	Inc.	Azi.	TVD	V.S.			
1K	0									
<div><div>PCG Gamma Ray</div><div>PGRC</div><div>api</div></div>										
0	300									

HALLIBURTON
Sperry Drilling Services
TVD Detail Log 1:240

Noble Energy
Wells Ranch AE30--64AHN
H&P 321
Sec. 29-T6N-R62W

PCG Gamma Ray
PGRC

0 api 300

api

api

300

Avg Rate of Penetration

ROPA

1K feet per hr 0

feet per hr

feet per hr

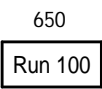
Depth

Inc.

Azi.

TVD

V.S.



600

603'

 0.20°

209.07°

603.00'

-0.76'

650

Run 100

700

718'

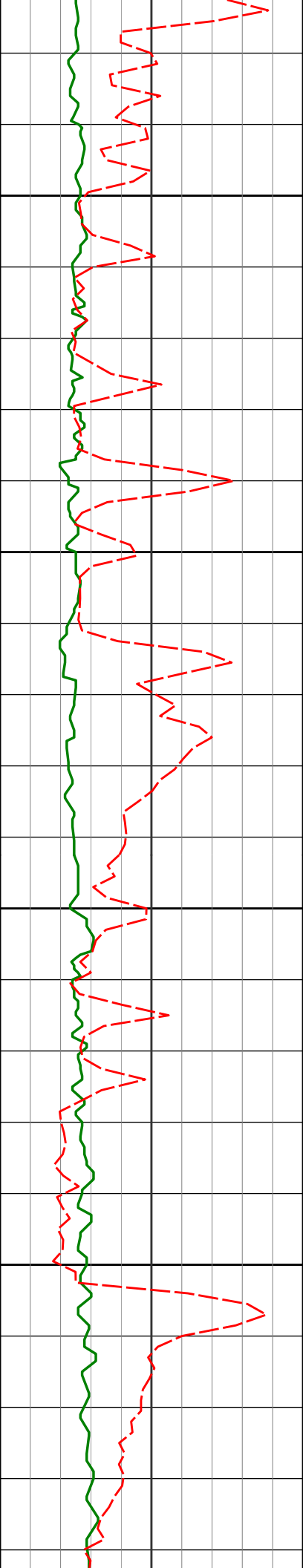
0.15°

76.64°

718.00'

-0.81'

750



800

810'

0.31°

124.68°

810.00'

-1.13'

850

900

902'

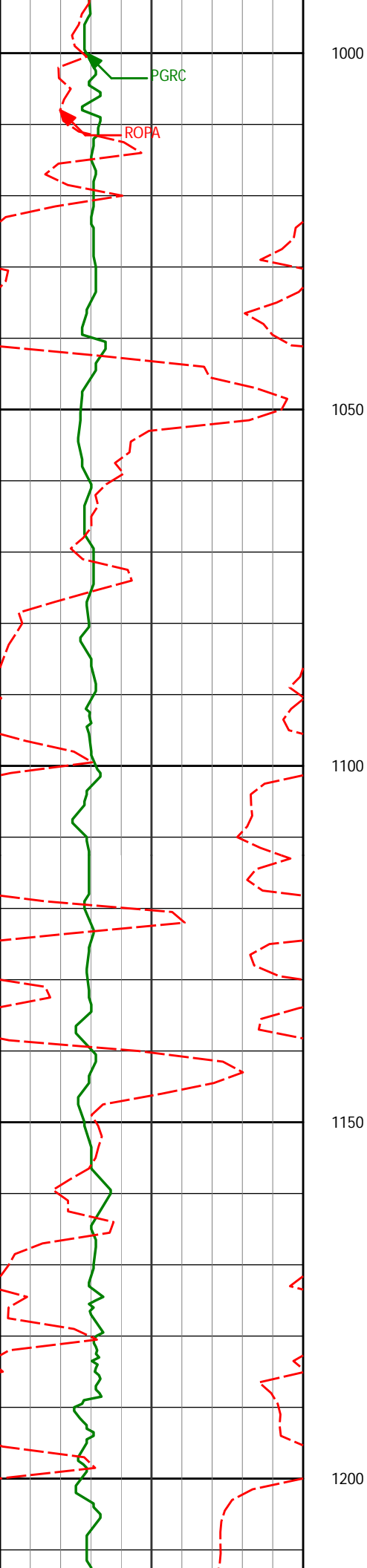
0.41°

112.74°

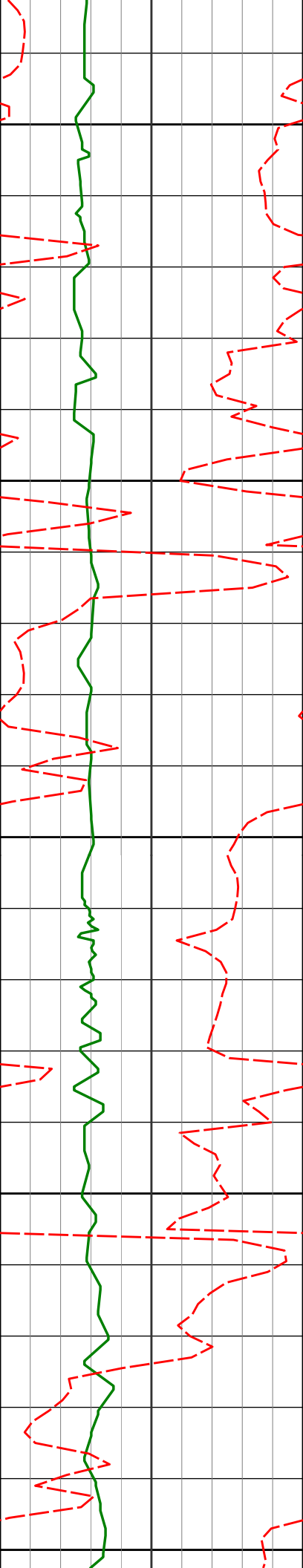
901.99'

-1.63'

950



994'	0.55°	125.96°	993.99'	-2.29'
1085'	0.79°	134.79°	1084.99'	-3.07'
1178'	0.96°	135.49°	1177.97'	-4.06'



1450

1458'

0.79°

69.61°

1457.95'

-7.08'

1500

1550

1553'

0.82°

68.91°

1552.95'

-8.33'

1600

1650

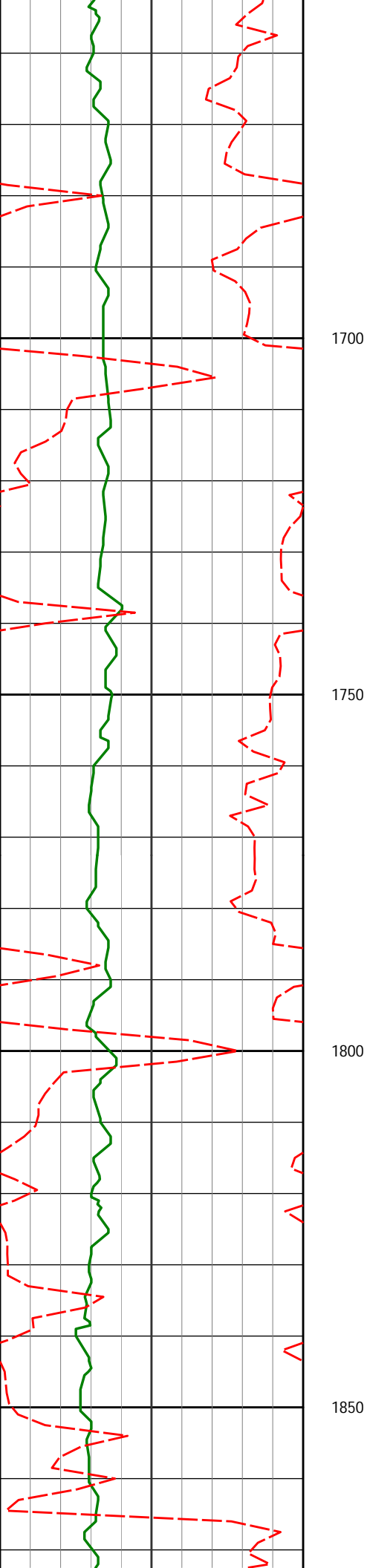
1648'

0.56°

305.89°

1647.94'

-8.60'



1742'

0.62°

313.25°

1741.94'

-7.87'

1700

1750

1800

1837'

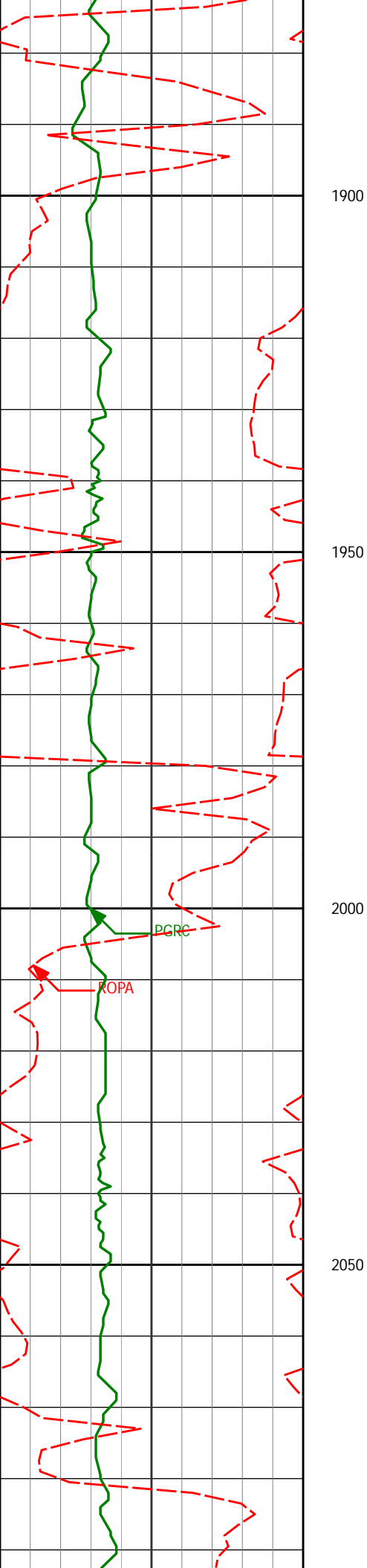
0.92°

277.78°

1836.93'

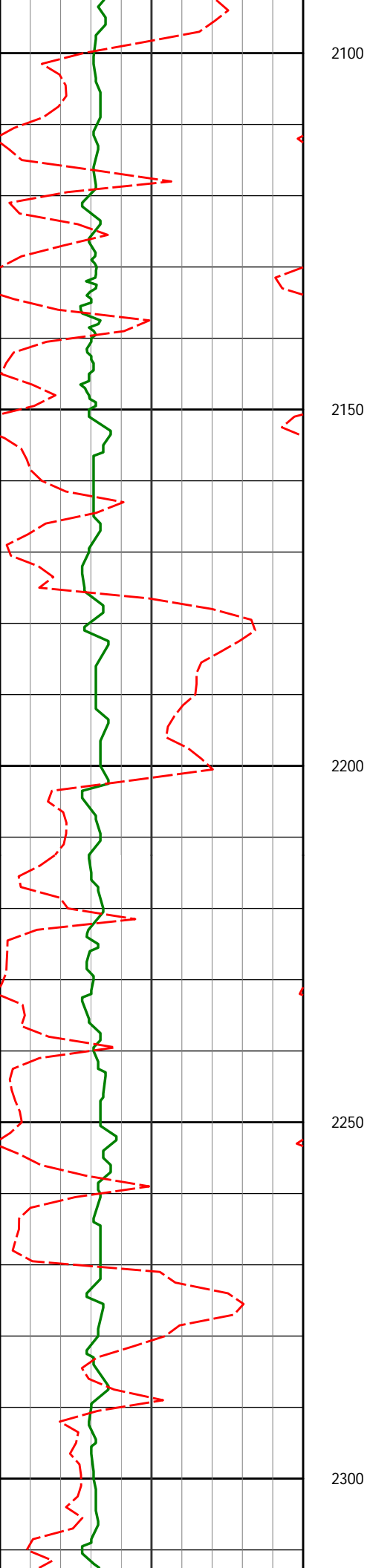
-6.74'

1850



1932' 1.27° 293.44° 1931.91' -5.03'

2026' 1.24° 255.60° 2025.89' -3.09'



2120'

1.48°

240.09°

2119.86'

-1.04'

2215'

0.99°

141.28°

2214.85'

-0.47'

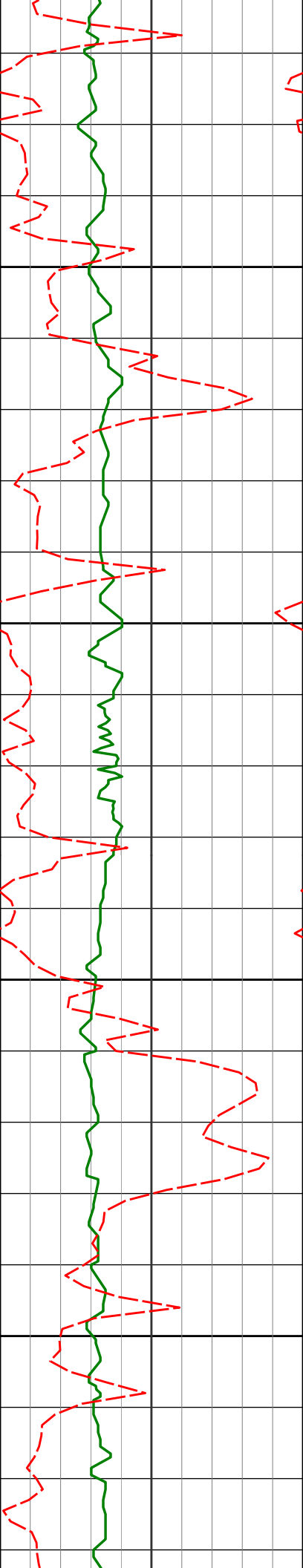
2310'

1.05°

148.64°

2309.83'

-1.41'



2350

2400

2450

2500

2405'

1.26°

166.02°

2404.82'

-2.09'

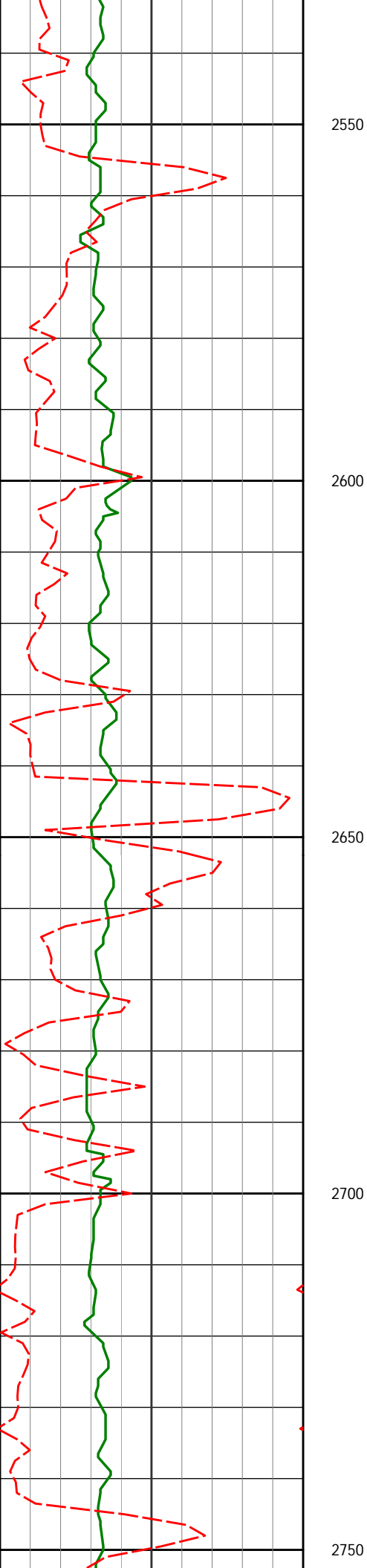
2499'

0.57°

341.64°

2498.81'

-2.19'



2594'

0.92°

1.21°

2593.80'

-2.07'

2689'

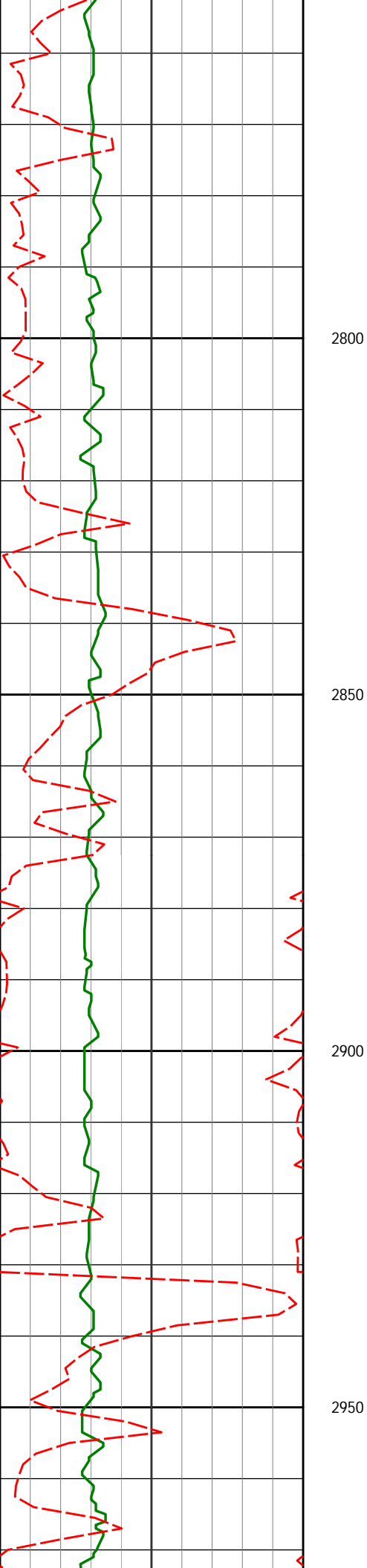
0.85°

345.84°

2688.79'

-1.94'

2750



2784'

0.94°

352.24°

2783.78'

-1.68'

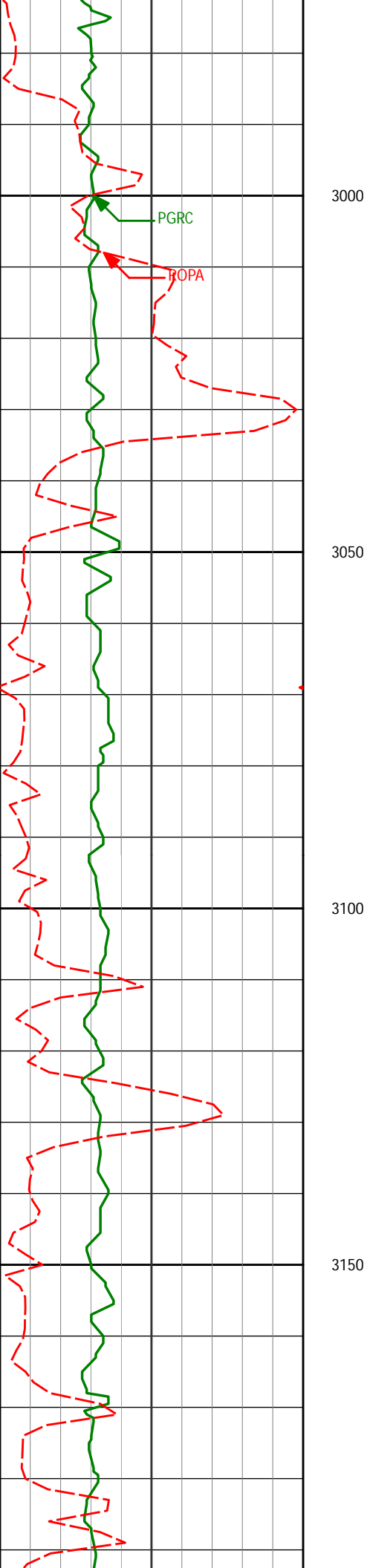
2879'

0.99°

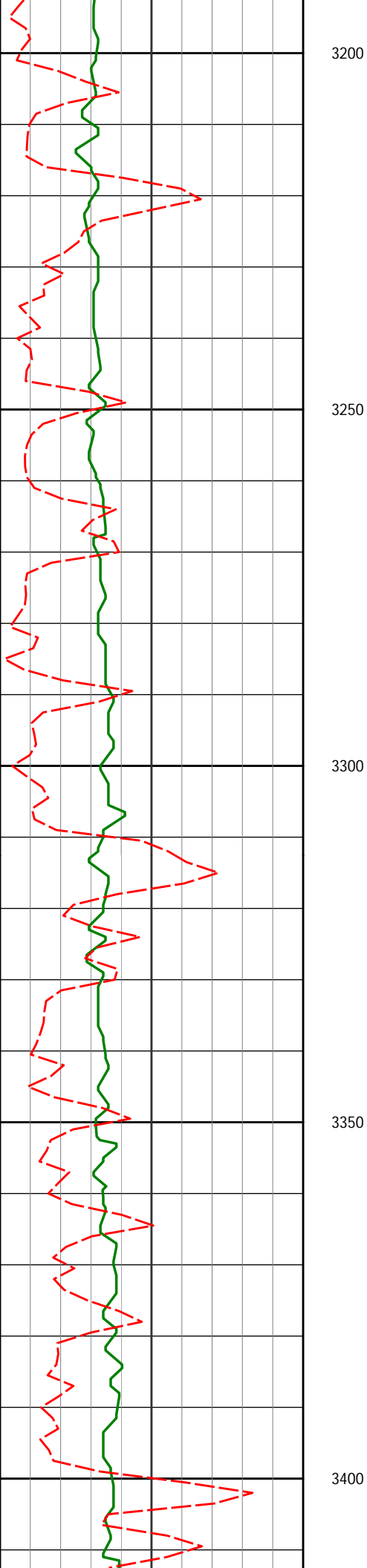
3.70°

2878.77'

-1.66'



2974'	1.05°	8.94°	2973.75'	-1.87'
3068'	0.75°	2.98°	3067.74'	-2.06'
3163'	0.62°	9.54°	3162.73'	-2.20'



3258'

0.51°

24.01°

3257.73'

-2.47'

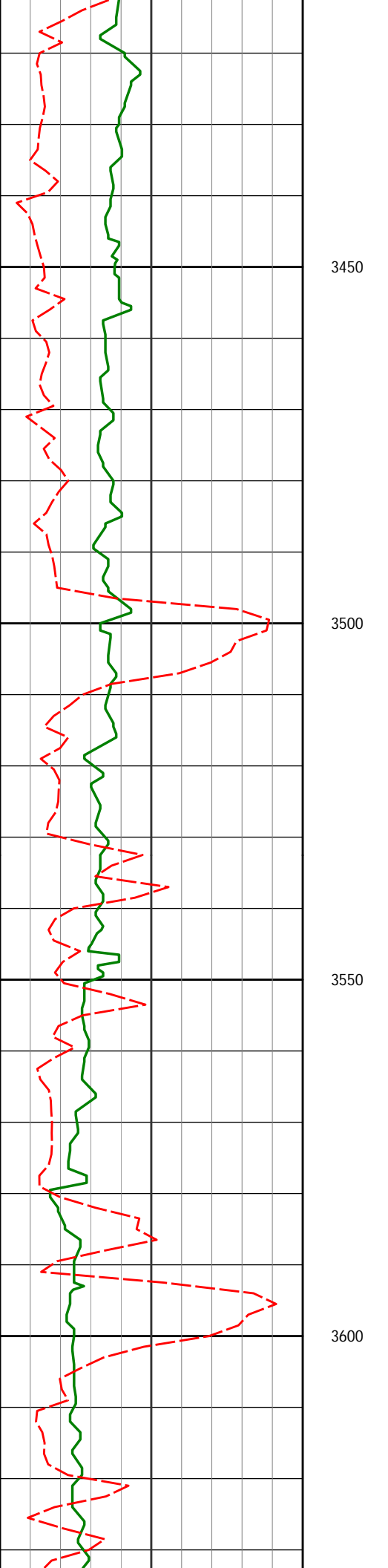
3352'

0.22°

244.98°

3351.73'

-2.48'



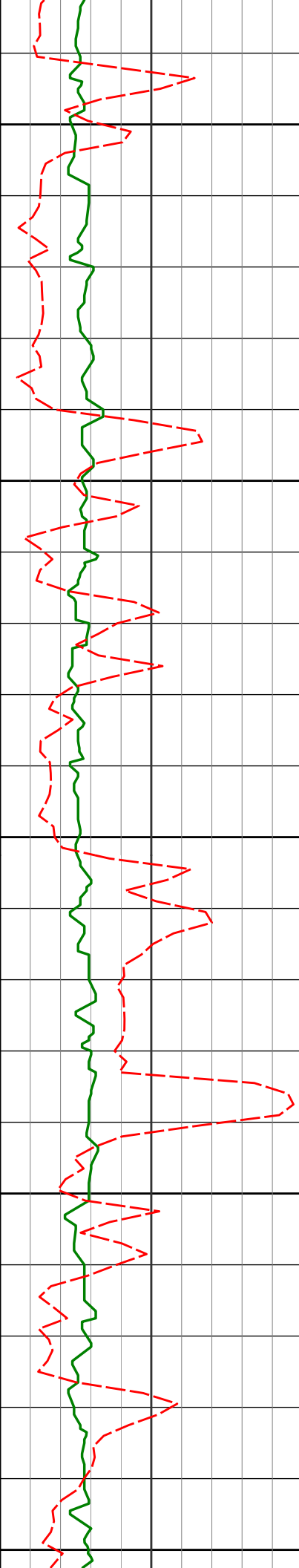
3447' 0.65° 322.13° 3446.72' -1.99'

3500

3542' 1.03° 307.40° 3541.71' -1.00'

3550

3600



3650

3700

3750

3800

3850

3637'

0.94°

305.56°

3636.70'

0.30'

3732'

1.05°

294.48°

3731.69'

1.71'

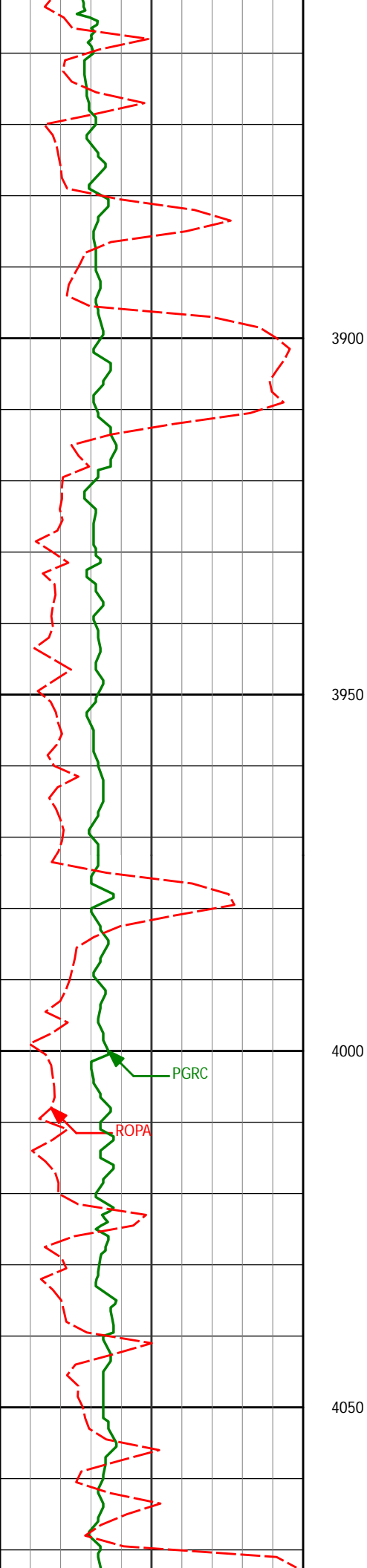
3827'

1.23°

298.08°

3826.67'

3.39'



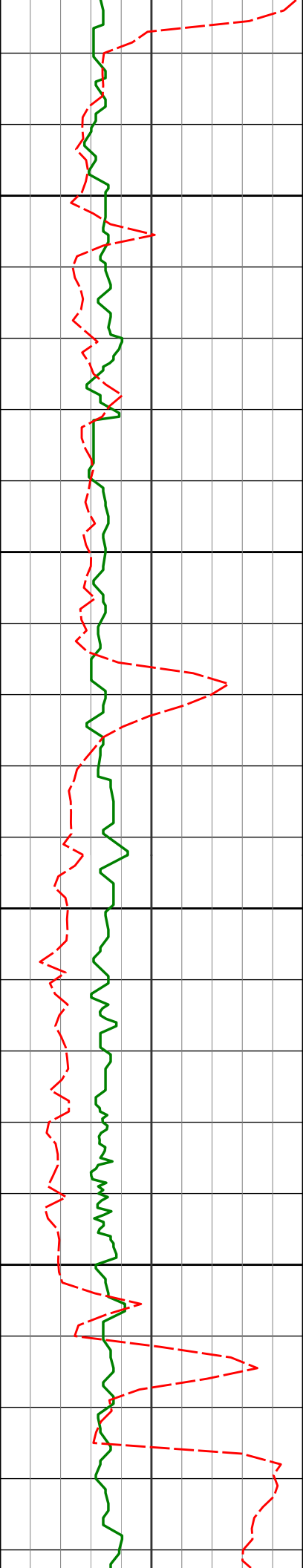
3921' 0.50° 301.62° 3920.66' 4.62'

3950

4000

4016' 0.84° 225.90° 4015.65' 5.48'

4050



4100

4111'

1.07°

199.71°

4110.64'

6.30'

4150

4200

4206'

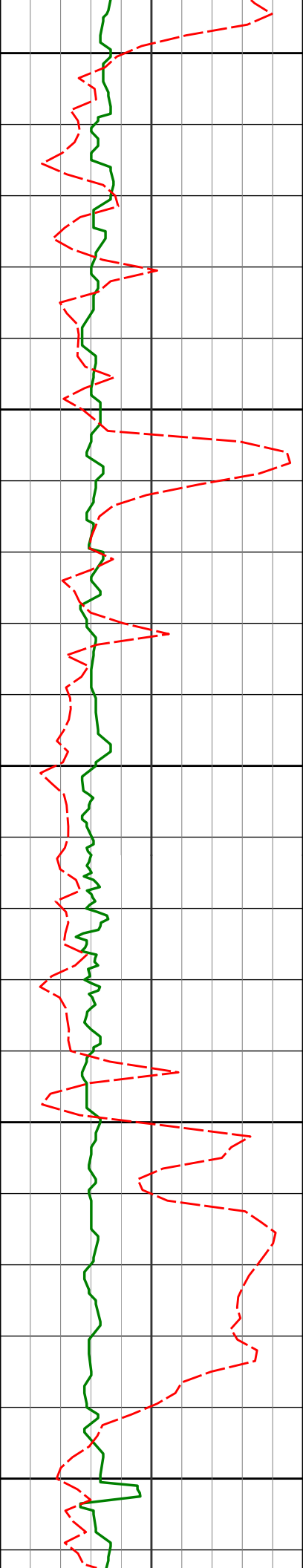
1.34°

193.74°

4205.62'

6.89'

4250



4300

4301'

0.33°

174.42°

4300.61'

7.15'

4350

4400

4396'

1.84°

167.80°

4395.59'

6.83'

4450

4500

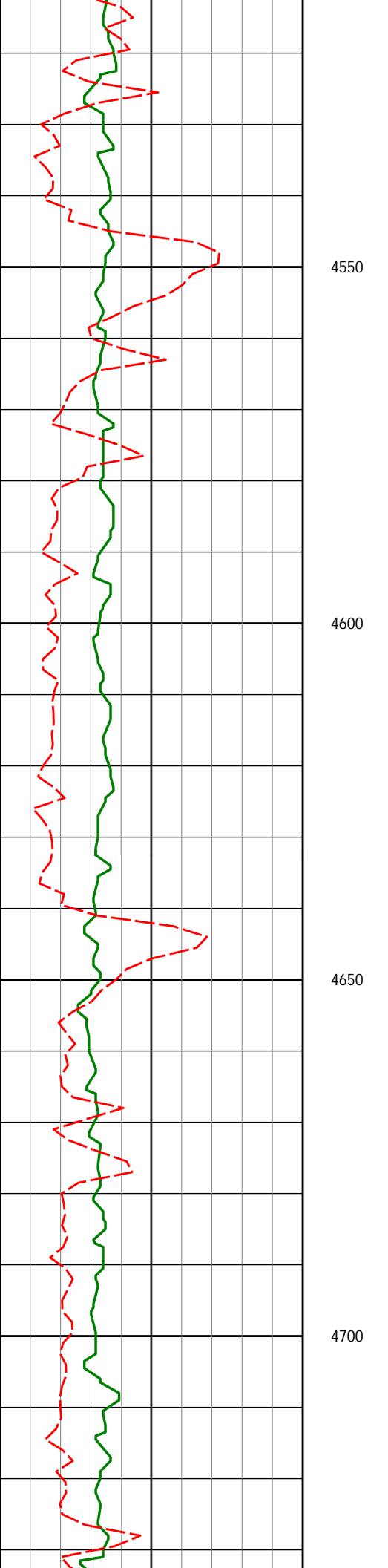
4490'

1.00°

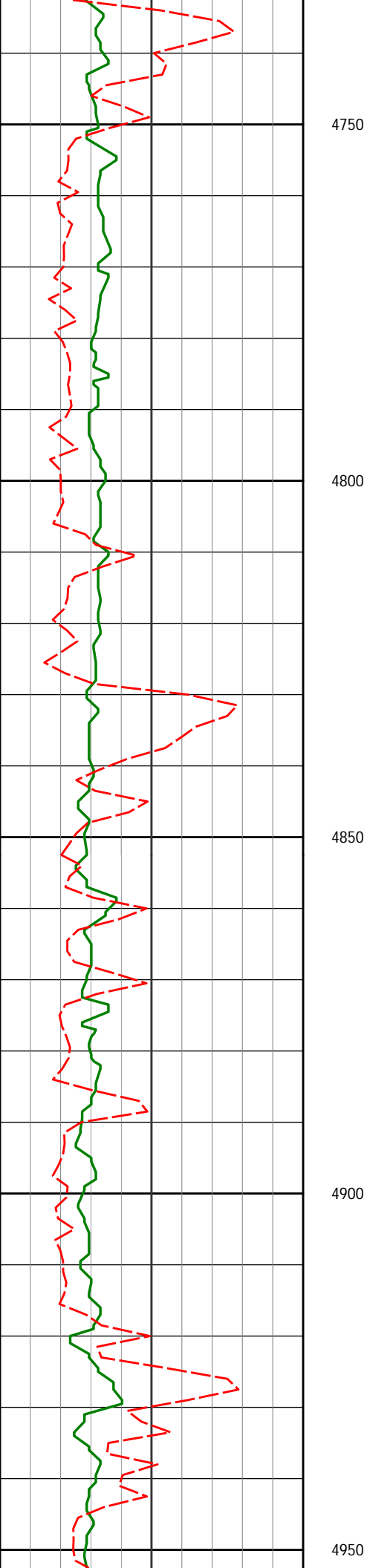
172.49°

4489.56'

6.44'



4550				
4585'	1.03°	156.99°	4584.54'	6.02'
4600				
4650				
4680'	0.80°	190.32°	4679.53'	5.83'
4700				



4775'

0.69°

227.17°

4774.52'

6.39'

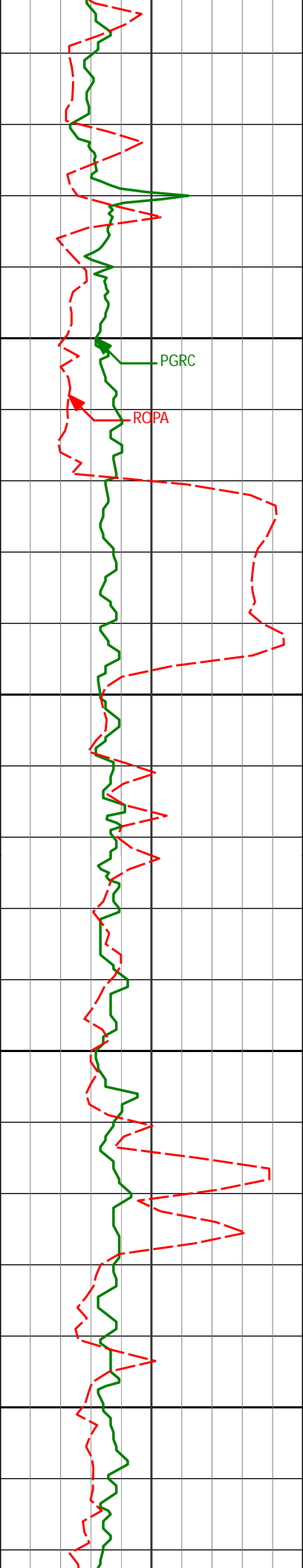
4870'

1.14°

224.23°

4869.51'

7.48'



5000

5050

5100

5150

4964'

1.38°

222.68°

4963.49'

8.92'

5059'

0.28°

110.96°

5058.48'

9.50'

5154'

1.06°

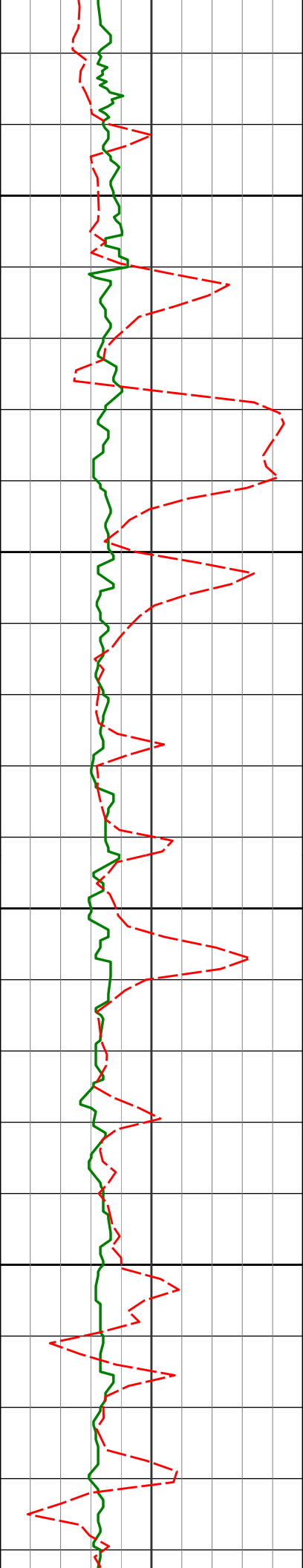
176.13°

5153.47'

9.24'

PGRC

ROPA



5200

5250

5300

5350

5248'

0.29°

21.30°

5247.47'

9.10'

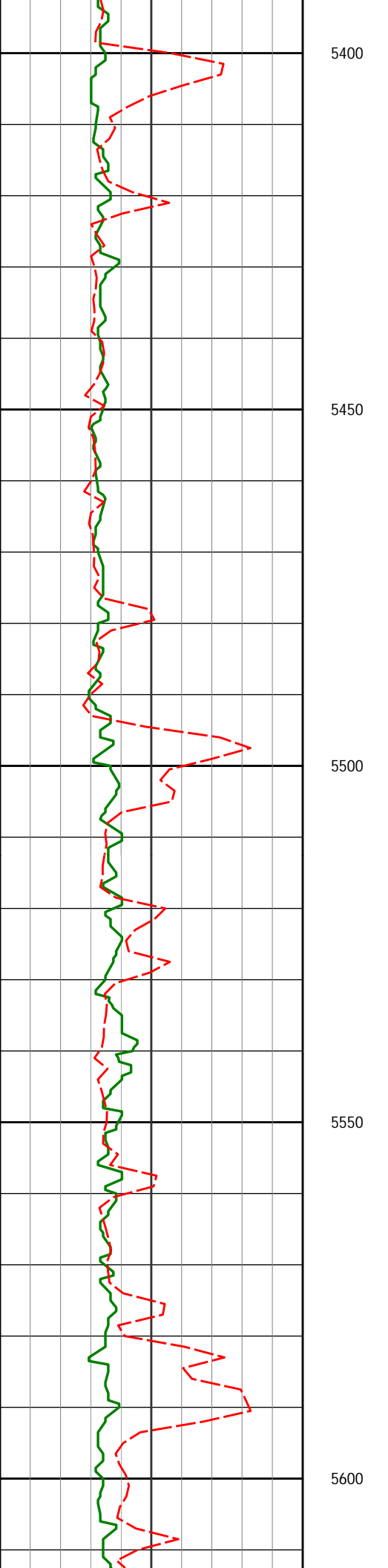
5343'

0.60°

301.82°

5342.46'

9.43'



5438'

0.28°

24.07°

5437.46'

9.75'

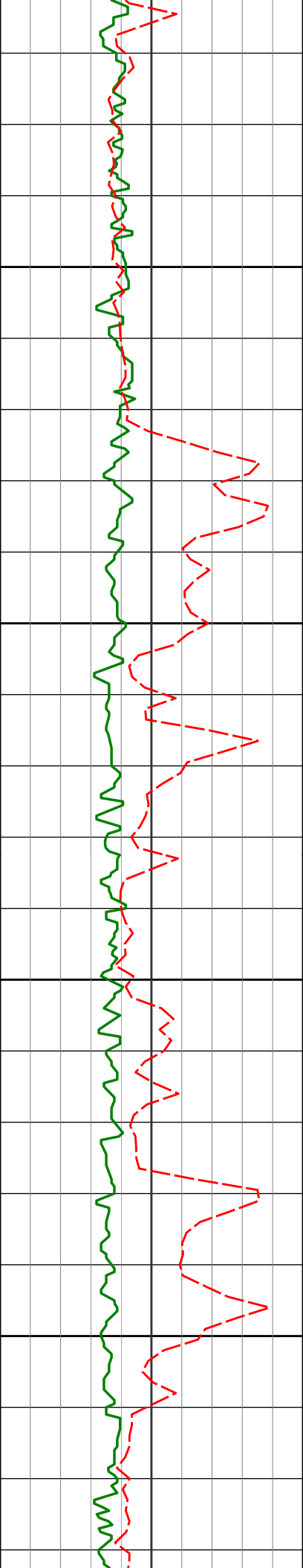
5533'

0.66°

219.98°

5532.46'

10.01'



5628'

0.76°

217.25°

5627.45'

10.76'

5650

5700

5723'

1.02°

219.82°

5722.44'

11.70'

5750

5800

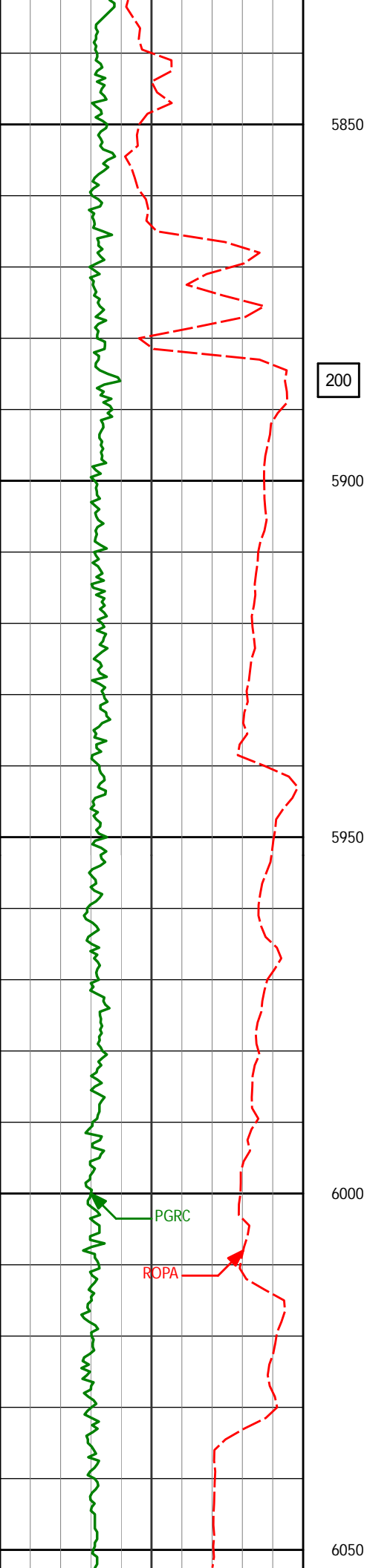
5826'

1.10°

222.11°

5825.42'

12.97'



5888'

1.06°

226.09°

5887.41'

13.80'

5959'

3.65°

258.98°

5958.35'

16.50'

6006'

9.62°

267.62°

6005.02'

21.91'

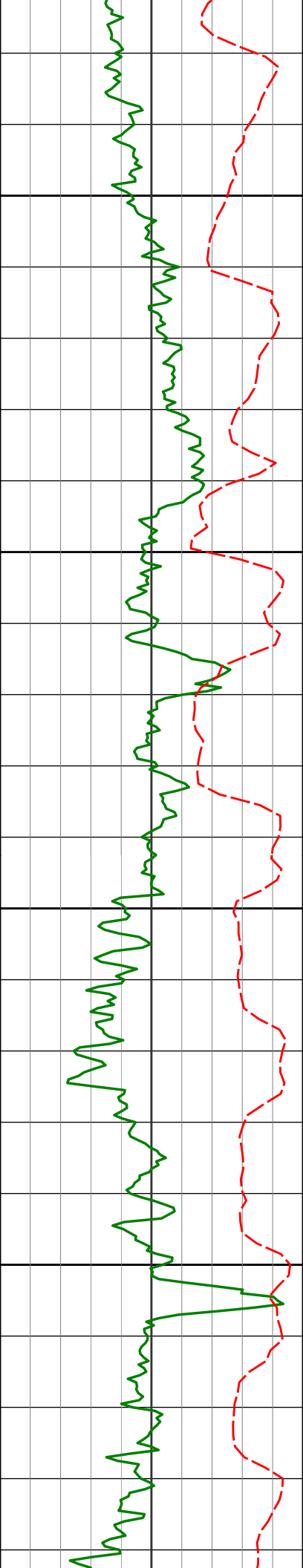
6054'

10.85°

271.16°

6052.25'

30.43'



6300

6338'

37.29°

268.87°

6309.52'

144.53'

6350

6385'

42.51°

270.03°

6345.56'

174.66'

6400

6433'

45.28°

270.79°

6380.15'

207.93'

6480'

47.78°

271.71°

6412.48'

242.01'

6450

6528'

49.18°

272.50°

6444.30'

277.90'

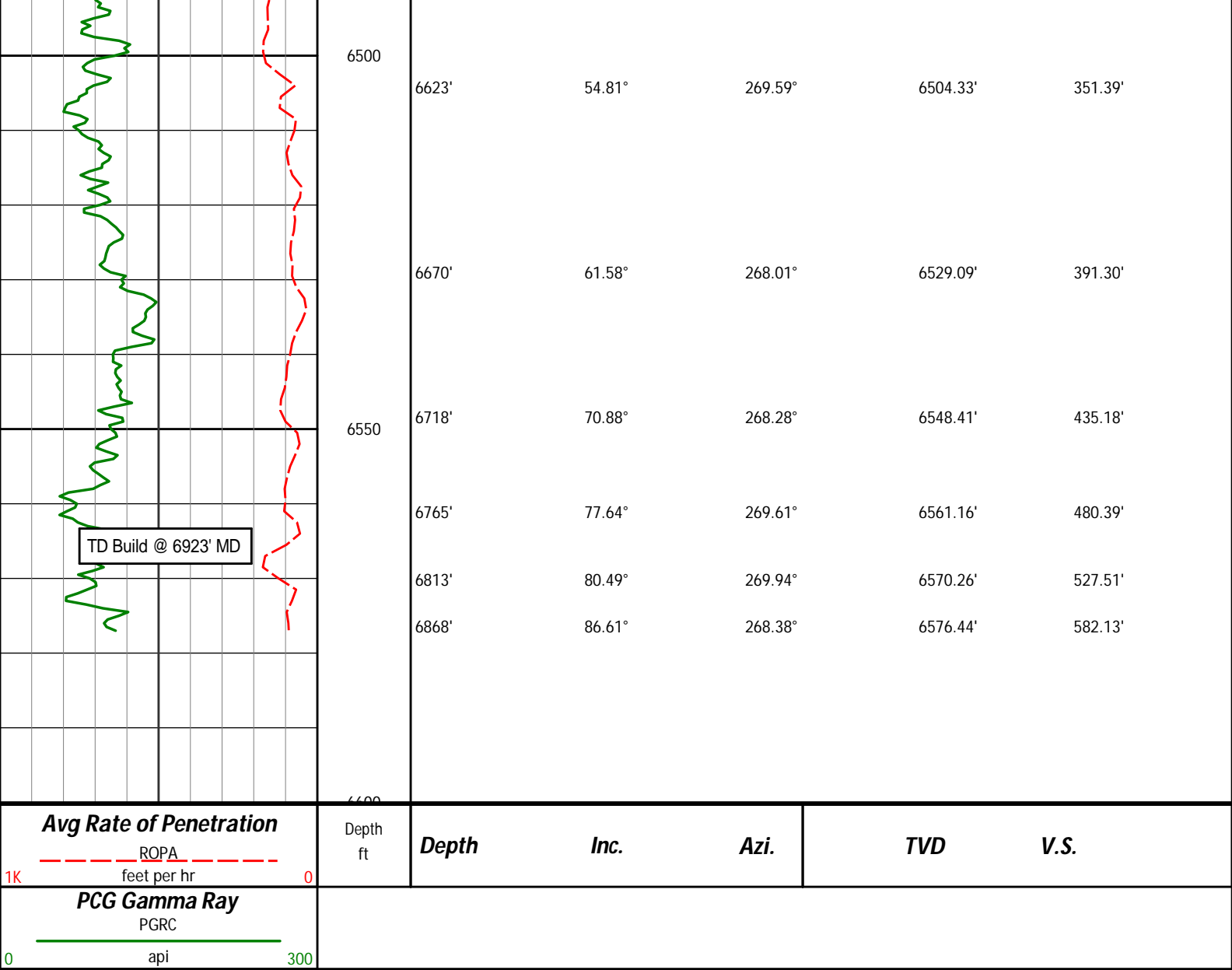
6575'

49.55°

272.22°

6474.91'

313.51'



HALLIBURTON

DIRECTIONAL SURVEY REPORT

Noble Energy
Wells Ranch AE30-64HNC
Wattenburg
Weld Colorado
USA
CA-XX-0901176441

Measured Depth (feet)	Inclination (degrees)	Direction (degrees)	Vertical Depth (feet)	Latitude (feet)	Departure (feet)	Vertical Section (feet)	Dogleg (deg/100ft)
0.00	0.00	0.00	0.00	0.00 N	0.00 E	0.00	TIE-IN
298.00	0.30	39.67	298.00	0.60 N	0.50 E	-0.51	0.10
603.00	0.20	209.07	603.00	0.75 N	0.75 E	-0.76	0.16
718.00	0.15	76.64	718.00	0.61 N	0.80 E	-0.81	0.28
810.00	0.31	124.68	810.00	0.50 N	1.12 E	-1.13	0.26
902.00	0.41	112.74	901.99	0.23 N	1.63 E	-1.63	0.14
994.00	0.55	125.96	993.99	0.16 S	2.29 E	-2.29	0.19
1085.00	0.79	134.79	1084.99	0.86 S	3.09 E	-3.07	0.29
1178.00	0.96	135.49	1177.97	1.87 S	4.09 E	-4.06	0.18
1271.00	0.52	67.68	1270.97	2.26 S	5.03 E	-4.99	0.97
1364.00	0.70	70.48	1363.96	1.91 S	5.95 E	-5.92	0.20
1458.00	0.79	69.61	1457.95	1.49 S	7.10 E	-7.08	0.10

1553.00	0.82	68.97	1552.95	1.02 S	8.35 E	-8.33	0.03
1648.00	0.56	305.89	1647.94	0.50 S	8.61 E	-8.60	1.28
1742.00	0.62	313.25	1741.94	0.11 N	7.86 E	-7.87	0.10
1837.00	0.92	277.78	1836.93	0.57 N	6.73 E	-6.74	0.58
1932.00	1.27	293.44	1931.91	1.09 N	5.01 E	-5.03	0.48
2026.00	1.24	255.60	2025.89	1.25 N	3.07 E	-3.09	0.87
2120.00	1.48	240.09	2119.86	0.39 N	1.03 E	-1.04	0.47
2215.00	0.99	141.28	2214.85	0.86 S	0.48 E	-0.47	2.00
2310.00	1.05	148.64	2309.83	2.24 S	1.45 E	-1.41	0.15
2405.00	1.26	166.02	2404.82	4.00 S	2.16 E	-2.09	0.43
2499.00	0.57	341.64	2498.81	4.56 S	2.26 E	-2.19	1.95
2594.00	0.92	1.21	2593.80	3.35 S	2.13 E	-2.07	0.45
2689.00	0.85	345.84	2688.79	1.90 S	1.97 E	-1.94	0.26
2784.00	0.94	352.24	2783.78	0.45 S	1.69 E	-1.68	0.14
2879.00	0.99	3.70	2878.77	1.14 N	1.64 E	-1.66	0.21
2974.00	1.05	8.94	2973.75	2.82 N	1.83 E	-1.87	0.12
3068.00	0.75	2.98	3067.74	4.29 N	1.99 E	-2.06	0.33
3163.00	0.62	9.54	3162.73	5.42 N	2.11 E	-2.20	0.16
3258.00	0.51	24.01	3257.73	6.31 N	2.37 E	-2.47	0.19
3352.00	0.22	244.98	3351.73	6.62 N	2.37 E	-2.48	0.74
3447.00	0.65	322.13	3446.72	6.96 N	1.88 E	-1.99	0.67
3542.00	1.03	307.40	3541.71	7.91 N	0.87 E	-1.00	0.46
3637.00	0.94	305.56	3636.70	8.88 N	0.44 W	0.30	0.10
3732.00	1.05	294.48	3731.69	9.69 N	1.87 W	1.71	0.23
3827.00	1.23	298.08	3826.67	10.53 N	3.56 W	3.39	0.20
3921.00	0.50	301.62	3920.66	11.22 N	4.80 W	4.62	0.78
4016.00	0.84	225.90	4015.65	10.96 N	5.65 W	5.48	0.91
4111.00	1.07	199.71	4110.64	9.64 N	6.45 W	6.30	0.51
4206.00	1.34	193.74	4205.62	7.72 N	7.02 W	6.89	0.31
4301.00	0.33	174.42	4300.61	6.37 N	7.25 W	7.15	1.09
4396.00	1.84	167.80	4395.59	4.61 N	6.90 W	6.83	1.59
4490.00	1.00	172.49	4489.56	2.32 N	6.48 W	6.44	0.90
4585.00	1.03	156.99	4584.54	0.71 N	6.04 W	6.02	0.29
4680.00	0.80	190.32	4679.53	0.73 S	5.82 W	5.83	0.60
4775.00	0.69	227.17	4774.52	1.77 S	6.36 W	6.39	0.51
4870.00	1.14	224.23	4869.51	2.83 S	7.44 W	7.48	0.48
4964.00	1.38	222.68	4963.49	4.34 S	8.86 W	8.92	0.26
5059.00	0.28	110.96	5058.48	5.26 S	9.42 W	9.50	1.59
5154.00	1.06	176.13	5153.47	6.22 S	9.14 W	9.24	1.03
5248.00	0.29	21.30	5247.47	6.87 S	8.99 W	9.10	1.41
5343.00	0.60	301.82	5342.46	6.38 S	9.33 W	9.43	0.65
5438.00	0.28	24.07	5437.46	5.90 S	9.66 W	9.75	0.66
5533.00	0.66	219.98	5532.46	6.11 S	9.91 W	10.01	0.98
5628.00	0.76	217.25	5627.45	7.03 S	10.65 W	10.76	0.11
5723.00	1.02	219.82	5722.44	8.18 S	11.57 W	11.70	0.28
5826.00	1.10	222.11	5825.42	9.62 S	12.82 W	12.97	0.09
5888.00	1.06	226.09	5887.41	10.46 S	13.63 W	13.80	0.14
5959.00	3.65	258.98	5958.35	11.35 S	16.32 W	16.50	3.97
6006.00	9.62	267.62	6005.02	11.80 S	21.72 W	21.91	12.84
6054.00	10.85	271.16	6052.25	11.87 S	30.25 W	30.43	2.88
6101.00	13.71	273.80	6098.17	11.41 S	40.23 W	40.40	6.20
6149.00	20.06	274.21	6144.08	10.43 S	54.13 W	54.29	13.23
6196.00	26.23	271.35	6187.28	9.59 S	72.57 W	72.71	13.34
6244.00	28.28	271.03	6229.94	9.14 S	94.54 W	94.68	4.28
6290.00	31.26	269.96	6269.87	8.95 S	117.38 W	117.51	6.58
6338.00	37.29	268.87	6309.52	9.25 S	144.40 W	144.53	12.63
6385.00	42.51	270.03	6345.56	9.52 S	174.53 W	174.66	11.22
6433.00	45.28	270.79	6380.15	9.28 S	207.81 W	207.93	5.87
6480.00	47.78	271.71	6412.48	8.53 S	241.91 W	242.01	5.51
6528.00	49.18	272.50	6444.30	7.20 S	277.82 W	277.90	3.17
6575.00	49.55	272.22	6474.91	5.74 S	313.46 W	313.51	0.91
6623.00	54.81	269.59	6504.33	5.17 S	351.35 W	351.39	11.78
6670.00	61.58	268.01	6529.09	6.03 S	391.26 W	391.30	14.68
6718.00	70.88	268.28	6548.41	7.44 S	435.12 W	435.18	19.38
6765.00	77.64	269.61	6561.16	8.27 S	480.32 W	480.39	14.64
6813.00	80.49	269.94	6570.26	8.45 S	527.44 W	527.51	5.98
6868.00	86.61	268.38	6576.44	9.26 S	582.06 W	582.13	11.48

CALCULATION BASED ON MINIMUM CURVATURE METHOD

SURVEY COORDINATES RELATIVE TO WELL SYSTEM REFERENCE POINT

TVD VALUES GIVEN RELATIVE TO DRILLING MEASUREMENT POINT

VERTICAL SECTION RELATIVE TO WELL HEAD

VERTICAL SECTION IS CALCULATED ALONG A DIRECTION OF 282.63 DEGREES (GRID)

VERTICAL SECTION IS COMPUTED ALONG A DIRECTION OF 269.09 DEGREES (GRID)
A TOTAL CORRECTION OF 7.57 DEG FROM MAGNETIC NORTH TO GRID NORTH HAS BEEN APPLIED

HORIZONTAL DISPLACEMENT IS RELATIVE TO THE WELL HEAD.
HORIZONTAL DISPLACEMENT(CLOSURE) AT 6868.00 FEET
IS 582.13 FEET ALONG 269.09 DEGREES (GRID)

First survey from 3rd party source (Muilti Shot EMS) and provided by CO-man on location before drilling.

Survey Depth 298 Inc 0.30 Azi 39.67

Survey Depth 603 Inc 0.20 Azi 209.07

Tied in @ Surface

Magnetic direction of 7.621 has been added to AZI for grid direction correction.

Date Printed:28 March 2014