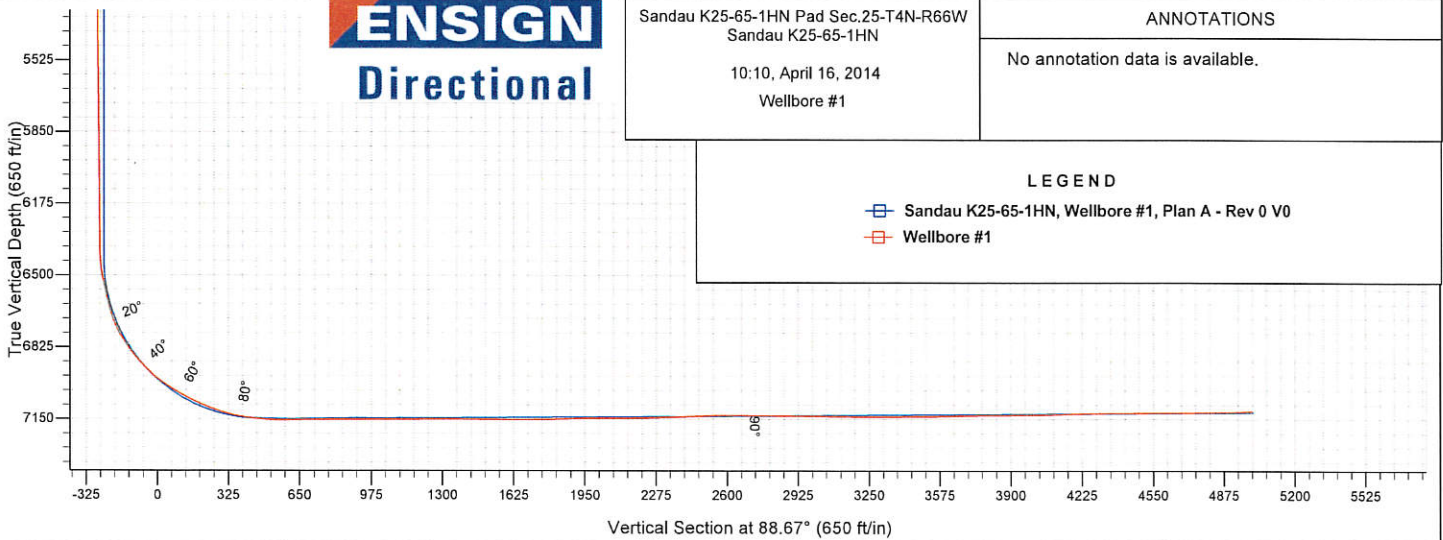
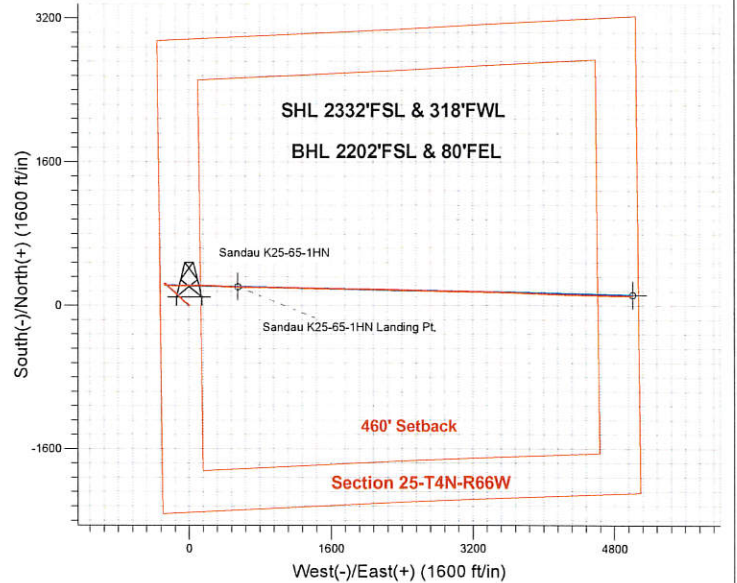


## Noble Energy Inc.- Weld County, CO (Grid North)

Well Name: **Sandau K25-65-1HN**  
 Surface Location: Sandau K25-65-1HN Pad Sec.25-T4N-R66W  
 North American Datum 1983, US State Plane 1983, Colorado Northern Zone  
 Ground Elevation: 4780.0  
 +N/-S +E/-W Northing Easting Latitude Longitude Slot  
 0.0 0.0 1346526.69 3213779.89 40.282080 -104.733740  
 Precision 829 RKB - 16' WELL @ 4796.0ft (Precision 829 RKB - 16')

### FINAL SURVEY

Projected Bottom Hole Location  
 12127'MD 7114'TVD 108'N & 5002'E of SHL  
 92.0 degree Incl @ 90.17 degree AZM



**ENSIGN**  
 Directional

Sandau K25-65-1HN Pad Sec.25-T4N-R66W  
 Sandau K25-65-1HN  
 10:10, April 16, 2014  
 Wellbore #1

#### ANNOTATIONS

No annotation data is available.

#### LEGEND

- Sandau K25-65-1HN, Wellbore #1, Plan A - Rev 0 V0
- Wellbore #1



## **Directional**

### **Noble Energy Inc.- Weld County, CO (Grid North)**

**Sec.25-T4N-R66W**

**Sandau K25-65-1HN Pad Sec.25-T4N-R66W**

**Sandau K25-65-1HN**

**Wellbore #1**

**Design: Wellbore #1**

### **Standard Survey Report**

**16 April, 2014**

<b>Company:</b>	Noble Energy Inc.- Weld County, CO (Grid North)	<b>Local Co-ordinate Reference:</b>	Well Sandau K25-65-1HN
<b>Project:</b>	Sec.25-T4N-R66W	<b>TVD Reference:</b>	WELL @ 4796.0ft (Precision 829 RKB - 16')
<b>Site:</b>	Sandau K25-65-1HN Pad Sec.25-T4N-R66W	<b>MD Reference:</b>	WELL @ 4796.0ft (Precision 829 RKB - 16')
<b>Well:</b>	Sandau K25-65-1HN	<b>North Reference:</b>	Grid
<b>Wellbore:</b>	Wellbore #1	<b>Survey Calculation Method:</b>	Minimum Curvature
<b>Design:</b>	Wellbore #1	<b>Database:</b>	Landmark

<b>Project</b>	Sec.25-T4N-R66W, Weld County, CO		
<b>Map System:</b>	US State Plane 1983	<b>System Datum:</b>	Mean Sea Level
<b>Geo Datum:</b>	North American Datum 1983		Using Well Reference Point
<b>Map Zone:</b>	Colorado Northern Zone		Using geodetic scale factor

Site	Sandau K25-65-1HN Pad Sec.25-T4N-R66W				
Site Position:		Northing:	1,346,526.69 ft	Latitude:	40.282080
From:	Lat/Long	Easting:	3,213,779.89 ft	Longitude:	-104.733740
Position Uncertainty:	0.0 ft	Slot Radius:	"	Grid Convergence:	0.50 °

Well	Sandau K25-65-1HN					
Well Position	+N/-S	0.0 ft	Northing:	1,346,526.69 ft	Latitude:	40.282080
	+E/-W	0.0 ft	Easting:	3,213,779.89 ft	Longitude:	-104.733740
Position Uncertainty		0.0 ft	Wellhead Elevation:	ft	Ground Level:	4,780.0 ft

<b>Wellbore</b>	Wellbore #1				
<b>Magnetics</b>	<b>Model Name</b>	<b>Sample Date</b>	<b>Declination (°)</b>	<b>Dip Angle (°)</b>	<b>Field Strength (nT)</b>
	IGRF2010	1/27/2014	8.49	66.87	52,797

<b>Design</b>	Wellbore #1				
<b>Audit Notes:</b>					
<b>Version:</b>	1.0	<b>Phase:</b>	ACTUAL	<b>Tie On Depth:</b>	0.0
<b>Vertical Section:</b>	<b>Depth From (TVD) (ft)</b>	<b>+N/-S (ft)</b>	<b>+E/-W (ft)</b>	<b>Direction (°)</b>	
	0.0	0.0	0.0	88.67	

<b>Survey Program</b>	Date 4/16/2014				
<b>From (ft)</b>	<b>To (ft)</b>	<b>Survey (Wellbore)</b>	<b>Tool Name</b>	<b>Description</b>	
223.0	663.0	Surface (Wellbore #1)	Flexi-Shot	VES Flexi-Shot Tool	
705.0	7,580.0	Intermediate (Wellbore #1)	MWD+IFR1+MS_WY	Fixed:v2:Rockies, crustal dec + 3-axis correction	
7,651.0	12,127.0	Lateral (Wellbore #1)	MWD+IFR1+MS_WY	Fixed:v2:Rockies, crustal dec + 3-axis correction	

<b>Survey</b>										
<b>Measured Depth (ft)</b>	<b>Inclination (°)</b>	<b>Azimuth (°)</b>	<b>Vertical Depth (ft)</b>	<b>+N/-S (ft)</b>	<b>+E/-W (ft)</b>	<b>Vertical Section (ft)</b>	<b>Dogleg Rate (°/100ft)</b>	<b>Build Rate (°/100ft)</b>	<b>Turn Rate (°/100ft)</b>	
0.0	0.00	0.00	0.0	0.0	0.0	0.0	0.00	0.00	0.00	
223.0	1.00	57.41	223.0	1.0	1.6	1.7	0.45	0.45	0.00	
410.0	0.40	177.81	410.0	1.3	3.0	3.1	0.67	-0.32	64.39	
663.0	1.20	317.01	663.0	2.3	1.3	1.3	0.60	0.32	55.02	
705.0	0.70	356.70	705.0	2.9	1.0	1.0	1.90	-1.19	94.50	
794.0	0.80	10.60	794.0	4.1	1.0	1.1	0.23	0.11	15.62	
884.0	0.90	7.30	883.9	5.4	1.2	1.4	0.12	0.11	-3.67	
974.0	0.90	5.70	973.9	6.8	1.4	1.6	0.03	0.00	-1.78	
1,063.0	0.70	21.20	1,062.9	8.0	1.7	1.9	0.33	-0.22	17.42	
1,140.0	0.40	115.60	1,139.9	8.3	2.1	2.3	1.08	-0.39	122.60	



<b>Company:</b>	Noble Energy Inc.- Weld County, CO (Grid North)	<b>Local Co-ordinate Reference:</b>	Well Sandau K25-65-1HN
<b>Project:</b>	Sec.25-T4N-R66W	<b>TVD Reference:</b>	WELL @ 4796.0ft (Precision 829 RKB - 16')
<b>Site:</b>	Sandau K25-65-1HN Pad Sec.25-T4N-R66W	<b>MD Reference:</b>	WELL @ 4796.0ft (Precision 829 RKB - 16')
<b>Well:</b>	Sandau K25-65-1HN	<b>North Reference:</b>	Grid
<b>Wellbore:</b>	Wellbore #1	<b>Survey Calculation Method:</b>	Minimum Curvature
<b>Design:</b>	Wellbore #1	<b>Database:</b>	Landmark

### Survey

Measured Depth (ft)	Inclination (°)	Azimuth (°)	Vertical Depth (ft)	+N/-S (ft)	+E/-W (ft)	Vertical Section (ft)	Dogleg Rate (°/100ft)	Build Rate (°/100ft)	Turn Rate (°/100ft)
1,235.0	0.70	141.80	1,234.9	7.7	2.7	2.9	0.40	0.32	27.58
1,332.0	0.80	145.60	1,331.9	6.7	3.5	3.6	0.12	0.10	3.92
1,425.0	0.60	140.00	1,424.9	5.8	4.2	4.3	0.23	-0.22	-6.02
1,517.0	0.70	127.20	1,516.9	5.1	4.9	5.0	0.19	0.11	-13.91
1,610.0	0.80	133.10	1,609.9	4.3	5.8	5.9	0.14	0.11	6.34
1,703.0	0.70	137.40	1,702.9	3.4	6.7	6.8	0.12	-0.11	4.62
1,796.0	0.40	115.20	1,795.9	2.9	7.4	7.5	0.39	-0.32	-23.87
1,889.0	2.60	321.80	1,888.8	4.4	6.4	6.5	3.19	2.37	-164.95
1,983.0	2.20	314.00	1,982.8	7.3	3.8	3.9	0.55	-0.43	-8.30
2,075.0	3.40	316.30	2,074.7	10.5	0.6	0.8	1.31	1.30	2.50
2,169.0	5.10	308.20	2,168.4	15.1	-4.6	-4.3	1.91	1.81	-8.62
2,264.0	6.30	301.50	2,262.9	20.4	-12.4	-11.9	1.44	1.26	-7.05
2,358.0	8.20	302.20	2,356.2	26.7	-22.4	-21.8	2.02	2.02	0.74
2,450.0	9.30	300.10	2,447.1	33.9	-34.4	-33.6	1.24	1.20	-2.28
2,542.0	10.40	307.50	2,537.7	42.7	-47.4	-46.4	1.82	1.20	8.04
2,631.0	12.00	314.00	2,625.0	54.0	-60.5	-59.2	2.29	1.80	7.30
2,721.0	12.10	313.50	2,713.1	67.0	-74.0	-72.5	0.16	0.11	-0.56
2,811.0	12.20	313.00	2,801.0	80.0	-87.8	-86.0	0.16	0.11	-0.56
2,900.0	11.80	312.30	2,888.1	92.5	-101.5	-99.3	0.48	-0.45	-0.79
2,990.0	10.90	311.20	2,976.3	104.3	-114.7	-112.2	1.03	-1.00	-1.22
3,079.0	11.90	312.80	3,063.6	116.1	-127.7	-125.0	1.18	1.12	1.80
3,169.0	10.90	312.40	3,151.8	128.2	-140.8	-137.8	1.11	-1.11	-0.44
3,259.0	9.50	312.40	3,240.4	138.9	-152.6	-149.3	1.56	-1.56	0.00
3,348.0	9.60	313.00	3,328.1	148.9	-163.4	-159.9	0.16	0.11	0.67
3,438.0	10.30	314.00	3,416.8	159.6	-174.7	-170.9	0.80	0.78	1.11
3,528.0	9.10	310.20	3,505.5	169.8	-185.9	-181.9	1.51	-1.33	-4.22
3,617.0	9.10	310.70	3,593.4	179.0	-196.6	-192.4	0.09	0.00	0.56
3,707.0	7.80	307.70	3,682.4	187.3	-206.9	-202.5	1.52	-1.44	-3.33
3,797.0	8.40	314.20	3,771.5	195.6	-216.4	-211.8	1.22	0.67	7.22
3,886.0	9.60	316.30	3,859.4	205.5	-226.2	-221.4	1.40	1.35	2.36
3,976.0	8.60	319.10	3,948.3	216.1	-235.8	-230.7	1.21	-1.11	3.11
4,065.0	6.30	316.50	4,036.5	224.6	-243.5	-238.2	2.61	-2.58	-2.92
4,155.0	5.60	313.30	4,126.0	231.2	-250.1	-244.7	0.86	-0.78	-3.56
4,245.0	4.60	306.10	4,215.7	236.4	-256.2	-250.7	1.32	-1.11	-8.00
4,334.0	4.00	308.00	4,304.4	240.4	-261.6	-255.9	0.69	-0.67	2.13
4,424.0	3.40	298.40	4,394.2	243.6	-266.4	-260.6	0.96	-0.67	-10.67
4,514.0	2.60	297.70	4,484.1	245.8	-270.5	-264.7	0.89	-0.89	-0.78
4,603.0	1.20	281.30	4,573.1	246.9	-273.2	-267.4	1.67	-1.57	-18.43
4,693.0	0.30	282.60	4,663.1	247.2	-274.4	-268.6	1.00	-1.00	1.44
4,782.0	0.70	155.60	4,752.1	246.7	-274.4	-268.6	1.03	0.45	-142.70
4,872.0	1.20	178.10	4,842.0	245.3	-274.1	-268.3	0.68	0.56	25.00
4,962.0	1.30	211.40	4,932.0	243.5	-274.6	-268.9	0.80	0.11	37.00
5,052.0	1.50	209.30	5,022.0	241.6	-275.7	-270.0	0.23	0.22	-2.33
5,141.0	1.20	213.10	5,111.0	239.8	-276.8	-271.2	0.35	-0.34	4.27
5,231.0	0.80	216.10	5,201.0	238.5	-277.7	-272.1	0.45	-0.44	3.33
5,321.0	0.70	129.50	5,291.0	237.6	-277.7	-272.0	1.15	-0.11	-96.22
5,409.0	0.50	120.80	5,378.9	237.1	-276.9	-271.3	0.25	-0.23	-9.89
5,499.0	0.60	146.50	5,468.9	236.5	-276.3	-270.7	0.29	0.11	28.56
5,588.0	1.20	125.60	5,557.9	235.5	-275.3	-269.7	0.76	0.67	-23.48
5,678.0	1.00	148.60	5,647.9	234.3	-274.1	-268.6	0.53	-0.22	25.56
5,768.0	1.00	143.00	5,737.9	233.0	-273.2	-267.7	0.11	0.00	-6.22
5,857.0	0.90	133.10	5,826.9	231.9	-272.3	-266.8	0.22	-0.11	-11.12
5,947.0	0.50	143.70	5,916.9	231.1	-271.5	-266.1	0.47	-0.44	11.78
6,037.0	0.70	156.20	6,006.9	230.3	-271.1	-265.6	0.26	0.22	13.89



**Company:** Noble Energy Inc.- Weld County, CO (Grid North)  
**Project:** Sec.25-T4N-R66W  
**Site:** Sandau K25-65-1HN Pad Sec.25-T4N-R66W  
**Well:** Sandau K25-65-1HN  
**Wellbore:** Wellbore #1  
**Design:** Wellbore #1

**Local Co-ordinate Reference:** Well Sandau K25-65-1HN  
**TVD Reference:** WELL @ 4796.0ft (Precision 829 RKB - 16')  
**MD Reference:** WELL @ 4796.0ft (Precision 829 RKB - 16')  
**North Reference:** Grid  
**Survey Calculation Method:** Minimum Curvature  
**Database:** Landmark

**Survey**

Measured Depth (ft)	Inclination (°)	Azimuth (°)	Vertical Depth (ft)	+N/-S (ft)	+E/-W (ft)	Vertical Section (ft)	Dogleg Rate (°/100ft)	Build Rate (°/100ft)	Turn Rate (°/100ft)
6,126.0	1.10	159.20	6,095.9	229.0	-270.5	-265.1	0.45	0.45	3.37
6,216.0	0.70	147.70	6,185.9	227.7	-269.9	-264.6	0.49	-0.44	-12.78
6,305.0	0.70	125.10	6,274.9	227.0	-269.2	-263.8	0.31	0.00	-25.39
6,385.0	0.90	140.40	6,354.8	226.2	-268.4	-263.1	0.36	0.25	19.13
6,454.0	3.30	109.10	6,423.8	225.1	-266.2	-260.9	3.73	3.48	-45.36
6,499.0	7.80	93.20	6,468.6	224.5	-261.9	-256.6	10.47	10.00	-35.33
6,543.0	11.50	89.90	6,511.9	224.4	-254.5	-249.2	8.50	8.41	-7.50
6,588.0	12.80	91.10	6,555.9	224.3	-245.1	-239.8	2.94	2.89	2.67
6,633.0	11.90	91.00	6,599.9	224.1	-235.4	-230.2	2.00	-2.00	-0.22
6,678.0	14.90	90.60	6,643.7	224.0	-225.0	-219.7	6.67	6.67	-0.89
6,723.0	18.90	91.10	6,686.7	223.8	-211.9	-206.7	8.89	8.89	1.11
6,768.0	24.20	93.40	6,728.6	223.1	-195.4	-190.2	11.92	11.78	5.11
6,811.0	29.50	92.70	6,766.9	222.1	-176.0	-170.8	12.35	12.33	-1.63
6,856.0	33.90	90.80	6,805.2	221.4	-152.4	-147.2	10.03	9.78	-4.22
6,901.0	36.80	90.80	6,841.9	221.0	-126.4	-121.2	6.44	6.44	0.00
6,946.0	41.10	89.60	6,876.9	220.9	-98.1	-92.9	9.70	9.56	-2.67
6,991.0	44.20	89.20	6,910.0	221.2	-67.6	-62.5	6.92	6.89	-0.89
7,036.0	46.70	89.70	6,941.5	221.5	-35.6	-30.4	5.61	5.56	1.11
7,080.0	52.30	90.10	6,970.1	221.6	-2.1	3.0	12.75	12.73	0.91
7,125.0	56.90	90.80	6,996.2	221.3	34.6	39.7	10.30	10.22	1.56
7,170.0	59.40	89.40	7,019.9	221.2	72.8	77.9	6.15	5.56	-3.11
7,215.0	61.50	90.30	7,042.1	221.3	111.9	117.0	4.98	4.67	2.00
7,260.0	63.40	91.10	7,062.9	220.9	151.8	156.9	4.51	4.22	1.78
7,305.0	67.20	90.80	7,081.7	220.2	192.7	197.8	8.47	8.44	-0.67
7,350.0	69.40	90.80	7,098.3	219.6	234.5	239.5	4.89	4.89	0.00
7,395.0	70.80	91.10	7,113.7	218.9	276.8	281.8	3.17	3.11	0.67
7,439.0	74.60	93.20	7,126.7	217.3	318.8	323.7	9.76	8.64	4.77
7,484.0	80.40	92.90	7,136.5	215.0	362.6	367.5	12.91	12.89	-0.67
7,529.0	82.00	93.10	7,143.4	212.6	407.0	411.9	3.58	3.56	0.44
7,580.0	84.50	93.90	7,149.4	209.5	457.6	462.3	5.14	4.90	1.57
7,651.0	87.60	91.56	7,154.2	206.2	528.3	533.0	5.47	4.37	-3.30
7,673.6	89.16	91.20	7,154.9	205.6	550.9	555.5	7.07	6.89	-1.60
<b>Sandau K25-65-1HN Landing Pt.</b>									
7,696.0	90.70	90.84	7,154.9	205.2	573.3	577.9	7.07	6.89	-1.60
7,786.0	91.90	91.06	7,152.9	203.7	663.2	667.8	1.36	1.33	0.24
7,875.0	89.30	90.62	7,151.9	202.4	752.2	756.7	2.96	-2.92	-0.49
7,965.0	90.50	89.61	7,152.1	202.3	842.2	846.7	1.74	1.33	-1.12
8,055.0	89.90	90.40	7,151.8	202.3	932.2	936.7	1.10	-0.67	0.88
8,144.0	89.50	90.94	7,152.2	201.2	1,021.2	1,025.6	0.76	-0.45	0.61
8,234.0	90.40	92.03	7,152.3	198.9	1,111.2	1,115.5	1.57	1.00	1.21
8,323.0	90.60	91.56	7,151.6	196.1	1,200.1	1,204.4	0.57	0.22	-0.53
8,413.0	90.30	90.59	7,150.8	194.4	1,290.1	1,294.3	1.13	-0.33	-1.08
8,503.0	89.80	91.75	7,150.8	192.6	1,380.1	1,384.2	1.40	-0.56	1.29
8,592.0	89.10	91.32	7,151.6	190.2	1,469.1	1,473.1	0.92	-0.79	-0.48
8,682.0	89.60	90.91	7,152.6	188.4	1,559.0	1,563.0	0.72	0.56	-0.46
8,772.0	90.00	90.35	7,153.0	187.4	1,649.0	1,652.9	0.76	0.44	-0.62
8,862.0	90.60	90.58	7,152.5	186.7	1,739.0	1,742.9	0.71	0.67	0.26
8,951.0	92.00	90.80	7,150.5	185.6	1,828.0	1,831.8	1.59	1.57	0.25
9,041.0	91.90	91.43	7,147.4	183.9	1,917.9	1,921.7	0.71	-0.11	0.70
9,131.0	89.70	91.11	7,146.1	181.9	2,007.9	2,011.6	2.47	-2.44	-0.36
9,221.0	90.20	90.33	7,146.2	180.8	2,097.9	2,101.5	1.03	0.56	-0.87
9,310.0	91.20	90.44	7,145.1	180.2	2,186.9	2,190.5	1.13	1.12	0.12
9,400.0	91.20	91.70	7,143.3	178.5	2,276.8	2,280.4	1.40	0.00	1.40

**Company:** Noble Energy Inc.- Weld County, CO (Grid North)  
**Project:** Sec.25-T4N-R66W  
**Site:** Sandau K25-65-1HN Pad Sec.25-T4N-R66W  
**Well:** Sandau K25-65-1HN  
**Wellbore:** Wellbore #1  
**Design:** Wellbore #1

**Local Co-ordinate Reference:** Well Sandau K25-65-1HN  
**TVD Reference:** WELL @ 4796.0ft (Precision 829 RKB - 16')  
**MD Reference:** WELL @ 4796.0ft (Precision 829 RKB - 16')  
**North Reference:** Grid  
**Survey Calculation Method:** Minimum Curvature  
**Database:** Landmark

#### Survey

Measured Depth (ft)	Inclination (°)	Azimuth (°)	Vertical Depth (ft)	+N/-S (ft)	+E/-W (ft)	Vertical Section (ft)	Dogleg Rate (°/100ft)	Build Rate (°/100ft)	Turn Rate (°/100ft)
9,489.0	93.20	92.31	7,139.8	175.4	2,365.7	2,369.1	2.35	2.25	0.69
9,579.0	92.30	92.24	7,135.5	171.8	2,455.5	2,458.9	1.00	-1.00	-0.08
9,669.0	91.50	92.08	7,132.5	168.4	2,545.4	2,548.6	0.91	-0.89	-0.18
9,758.0	89.00	91.74	7,132.1	165.4	2,634.4	2,637.5	2.83	-2.81	-0.38
9,848.0	89.20	91.91	7,133.6	162.6	2,724.3	2,727.3	0.29	0.22	0.19
9,938.0	89.60	91.05	7,134.5	160.3	2,814.3	2,817.2	1.05	0.44	-0.96
10,028.0	89.80	90.40	7,135.0	159.1	2,904.3	2,907.2	0.76	0.22	-0.72
10,117.0	89.50	90.66	7,135.5	158.3	2,993.3	2,996.1	0.45	-0.34	0.29
10,207.0	89.40	90.43	7,136.4	157.4	3,083.2	3,086.1	0.28	-0.11	-0.26
10,297.0	88.80	90.88	7,137.8	156.4	3,173.2	3,176.0	0.83	-0.67	0.50
10,386.0	90.00	90.95	7,138.7	155.0	3,262.2	3,264.9	1.35	1.35	0.08
10,476.0	90.50	92.20	7,138.3	152.5	3,352.2	3,354.8	1.50	0.56	1.39
10,565.0	90.10	91.66	7,137.9	149.5	3,441.1	3,443.7	0.76	-0.45	-0.61
10,655.0	90.60	91.51	7,137.3	147.0	3,531.1	3,533.5	0.58	0.56	-0.17
10,745.0	92.20	91.63	7,135.1	144.6	3,621.0	3,623.4	1.78	1.78	0.13
10,834.0	91.10	91.71	7,132.6	142.0	3,709.9	3,712.2	1.24	-1.24	0.09
10,924.0	89.60	91.91	7,132.0	139.1	3,799.9	3,802.1	1.68	-1.67	0.22
11,014.0	90.20	92.38	7,132.2	135.8	3,889.8	3,891.9	0.85	0.67	0.52
11,104.0	91.10	92.39	7,131.1	132.0	3,979.7	3,981.7	1.00	1.00	0.01
11,193.0	92.30	92.87	7,128.5	127.9	4,068.6	4,070.5	1.45	1.35	0.54
11,283.0	91.30	92.47	7,125.7	123.7	4,158.5	4,160.2	1.20	-1.11	-0.44
11,373.0	91.20	92.17	7,123.7	120.1	4,248.4	4,250.0	0.35	-0.11	-0.33
11,462.0	90.50	91.15	7,122.4	117.5	4,337.3	4,338.9	1.39	-0.79	-1.15
11,552.0	90.50	91.52	7,121.6	115.4	4,427.3	4,428.8	0.41	0.00	0.41
11,642.0	90.00	90.65	7,121.2	113.7	4,517.3	4,518.7	1.11	-0.56	-0.97
11,731.0	90.10	90.89	7,121.1	112.5	4,606.3	4,607.6	0.29	0.11	0.27
11,821.0	91.10	91.08	7,120.2	111.0	4,696.2	4,697.6	1.13	1.11	0.21
11,911.0	90.50	90.56	7,118.9	109.7	4,786.2	4,787.5	0.88	-0.67	-0.58
12,000.0	91.20	90.46	7,117.6	108.9	4,875.2	4,876.4	0.79	0.79	-0.11
12,065.0	92.00	90.17	7,115.8	108.5	4,940.2	4,941.4	1.31	1.23	-0.45
12,127.0	92.00	90.17	7,113.6	108.4	5,002.2	5,003.3	0.00	0.00	0.00

Sandau K25-65-1HN BHL 2210'FSL & 75'FEL

Checked By: \_\_\_\_\_ Approved By: \_\_\_\_\_ Date: \_\_\_\_\_