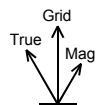
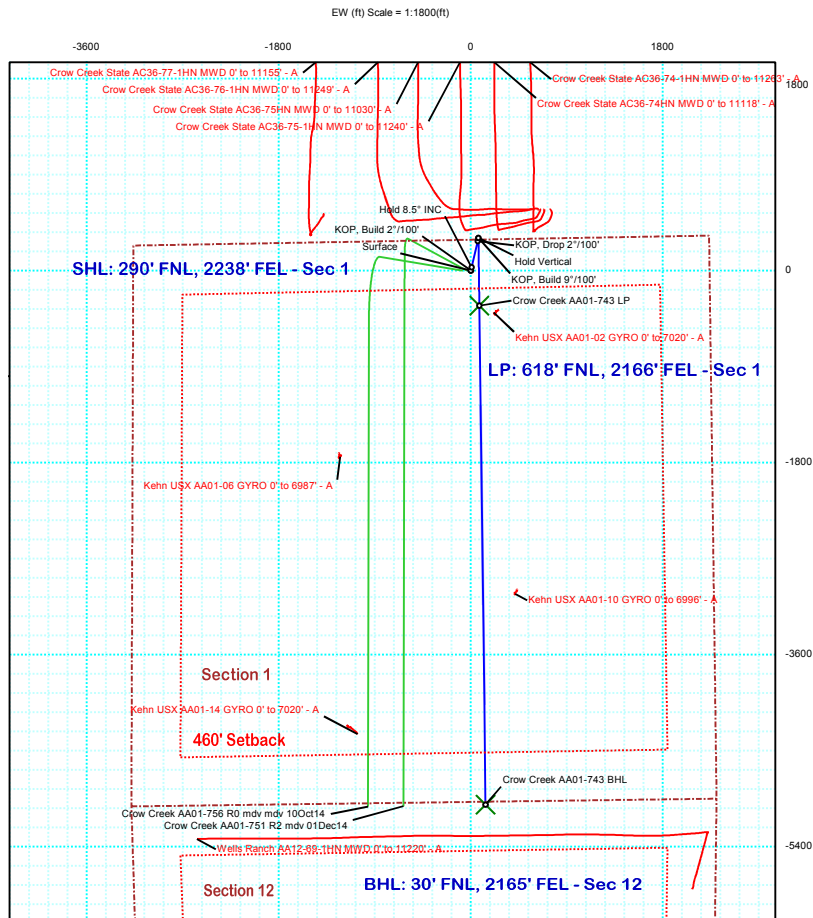
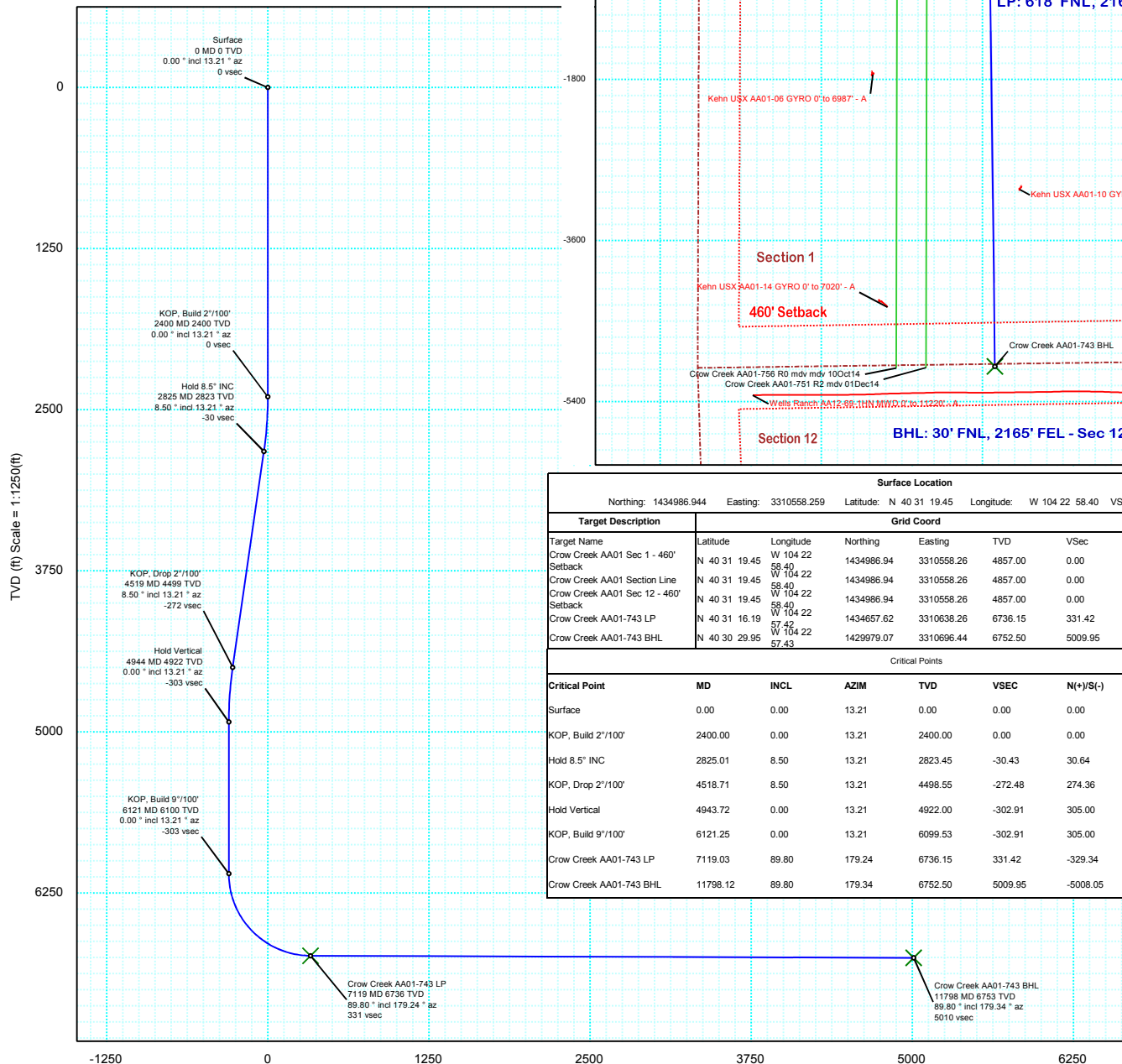


| | | | |
|--|-------------------------------------|---|--|
| Borehole: Original Hole | Well: Crow Creek AA01-743 | Field: CO, Weld County (NAD 83 NZ) | Structure: Noble 01-6N-63W (Crow Creek AA01 Pad) - H&P 277 |
| Gravity & Magnetic Parameters Model: HDGM 2014 Dip: 67.068° Date: 01-Dec-2014 MagDec: 8.288° FS: 52580.199nT Gravity FS: 999.061mgn (9.80665 Based) | | Surface Location NAD83 Colorado State Plane, Northern Zone, US Feet Lat: N 40 31 19.45 Northing: 1434986.94ftU Grid Conv: 0.7218° Lon: W 104 22 58.40 Easting: 3310558.26ftU Scale Fact: 0.99996803 S | |
| Miscellaneous Slot: Crow Creek AA01-743 Plan: Crow Creek AA01-743 R1 mdy 01Dec14 TVD Ref: KB 24ft(4857ft above MSL) | | | |

Proposal



Grid North
Tot Corr (M->G 7.566°)
Mag Dec (8.288°)
Grid Conv (0.722°)



| Surface Location | | | | | | | | |
|---------------------------------------|---------------|----------------------|------------|-------------------------|---------|---------------------------|-------------|----------------------|
| Northing: 1434986.944 | | Easting: 3310558.259 | | Latitude: N 40 31 19.45 | | Longitude: W 104 22 58.40 | | VSec Azimuth: 178.42 |
| Target Description | | Grid Coord | | | | | Local Coord | |
| Target Name | Latitude | Longitude | Northing | Easting | TVD | VSec | N(+)/S(-) | E(+)/W(-) |
| Crow Creek AA01 Sec 1 - 460' Setback | N 40 31 19.45 | W 104 22 58.40 | 1434986.94 | 3310558.26 | 4857.00 | 0.00 | 0.00 | 0.00 |
| Crow Creek AA01 Section Line | N 40 31 19.45 | W 104 22 58.40 | 1434986.94 | 3310558.26 | 4857.00 | 0.00 | 0.00 | 0.00 |
| Crow Creek AA01 Sec 12 - 460' Setback | N 40 31 19.45 | W 104 22 58.40 | 1434986.94 | 3310558.26 | 4857.00 | 0.00 | 0.00 | 0.00 |
| Crow Creek AA01-743 LP | N 40 31 16.19 | W 104 22 57.42 | 1434657.62 | 3310638.26 | 6736.15 | 331.42 | -329.34 | 80.00 |
| Crow Creek AA01-743 BHL | N 40 30 29.95 | W 104 22 57.43 | 1429979.07 | 3310696.44 | 6752.50 | 5009.95 | -5008.05 | 138.18 |
| Critical Points | | | | | | | | |
| Critical Point | MD | INCL | AZIM | TVD | VSEC | N(+)/S(-) | E(+)/W(-) | DLS |
| Surface | 0.00 | 0.00 | 13.21 | 0.00 | 0.00 | 0.00 | 0.00 | |
| KOP, Build 2°/100' | 2400.00 | 0.00 | 13.21 | 2400.00 | 0.00 | 0.00 | 0.00 | 0.00 |
| Hold 8.5° INC | 2825.01 | 8.50 | 13.21 | 2823.45 | -30.43 | 30.64 | 7.19 | 2.00 |
| KOP, Drop 2°/100' | 4518.71 | 8.50 | 13.21 | 4498.55 | -272.48 | 274.36 | 64.40 | 0.00 |
| Hold Vertical | 4943.72 | 0.00 | 13.21 | 4922.00 | -302.91 | 305.00 | 71.59 | 2.00 |
| KOP, Build 9°/100' | 6121.25 | 0.00 | 13.21 | 6099.53 | -302.91 | 305.00 | 71.59 | 0.00 |
| Crow Creek AA01-743 LP | 7119.03 | 89.80 | 179.24 | 6736.15 | 331.42 | -329.34 | 80.00 | 9.00 |
| Crow Creek AA01-743 BHL | 11798.12 | 89.80 | 179.34 | 6752.50 | 5009.95 | -5008.05 | 138.18 | 0.00 |