



RADIAL CEMENT BOND
GAMMA RAY
CCL

Company KERR MCGEE OIL AND GAS
Well DOLPH 33-1 (DIR)
Field WATTENBERG
County WELD State CO

Location: API # : 05-123-29686
LAT: 40.16150 LONG: -104.73280
SW/SW
SEC 1 TWP 2N RGE 66W
Permanent Datum GL Elevation 5018'
Log Measured From KB 17'
Drilling Measured From KB
Other Services
K.B. 5035'
D.F. 5034'
G.L. 5018'

Company KERR MCGEE OIL AND GAS
Well DOLPH 33-1 (DIR)
Field WATTENBERG
County WELD
State CO

Date	12-11-2014
Run Number	ONE
Depth Driller	8162'
Depth Logger	1618'
Bottom Logged Interval	1608'
Top Log Interval	SURFACE
Open Hole Size	7.875
Type Fluid	WATER
Density / Viscosity	1.0
Max. Recorded Temp.	85 DEG F
Estimated Cement Top	1144'
Time Well Ready	N/A
Time Logger on Bottom	N/A
Equipment Number	4310
Location	GREELEY
Recorded By	N.POLLOCK
Witnessed By	R. CINTORA


Borehole Record				Tubing Record			
Run Number	Bit	From	To	Size	Weight	From	To
ONE	12.25"	SURFACE	940'				
TWO	7.88"	940'	8162'				
Casing Record	Size		Wgt/Ft	Top	Bottom		
Surface String	8.63		24#	SURFACE	901		
Prot. String							
Production String	4.5		11.6	SURFACE	8152		
Liner							

<<< Fold Here >>>

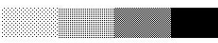

All interpretations are opinions based on inferences from electrical or other measurements and we cannot and do not guarantee the accuracy or correctness of any interpretation, and we shall not, except in the case of gross or willful negligence on our part, be liable or responsible for any loss, costs, damages, or expenses incurred or sustained by anyone resulting from any interpretation made by any of our officers, agents or employees. These interpretations are also subject to our general terms and conditions set out in our current Price Schedule.

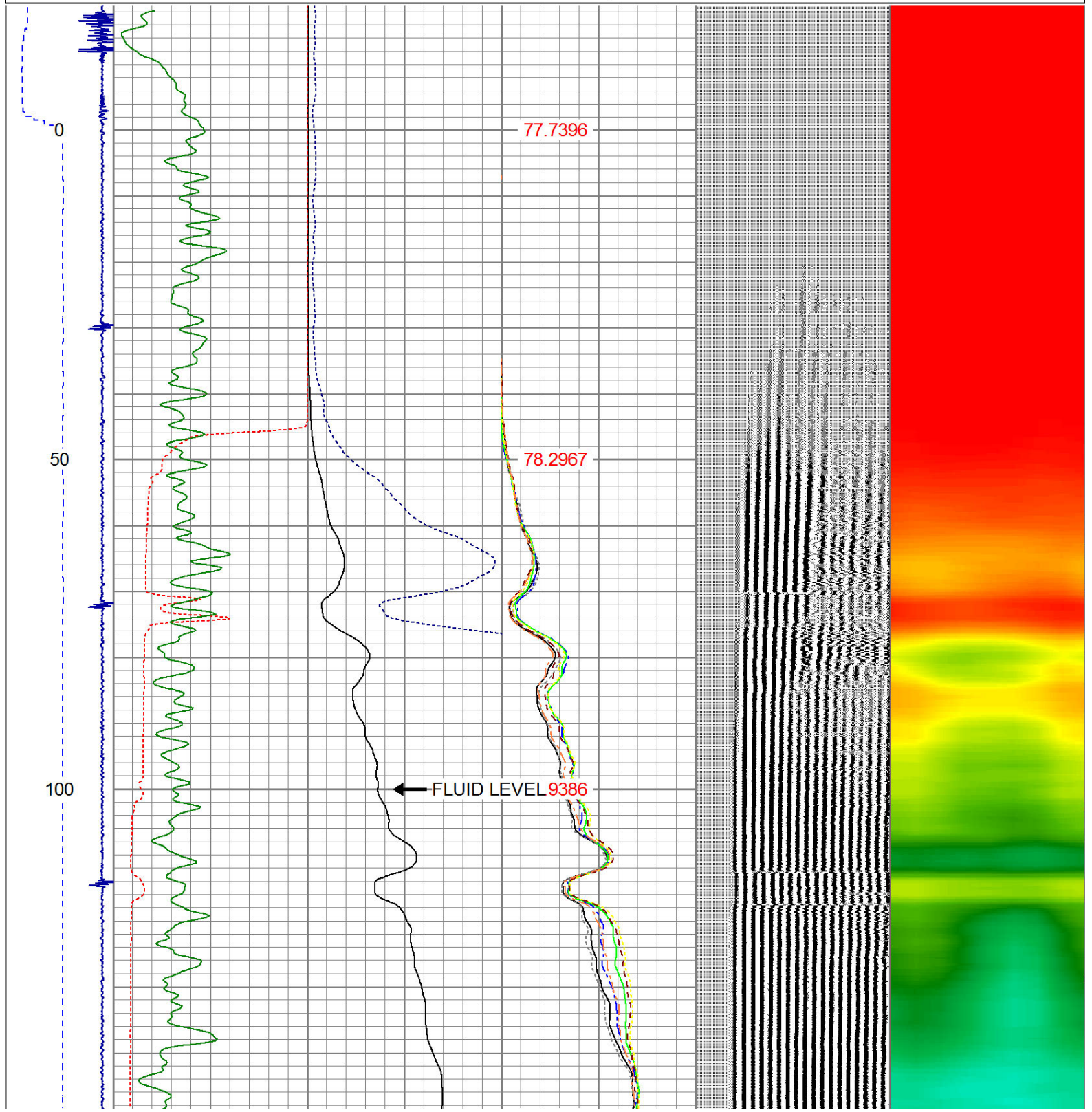
Comments

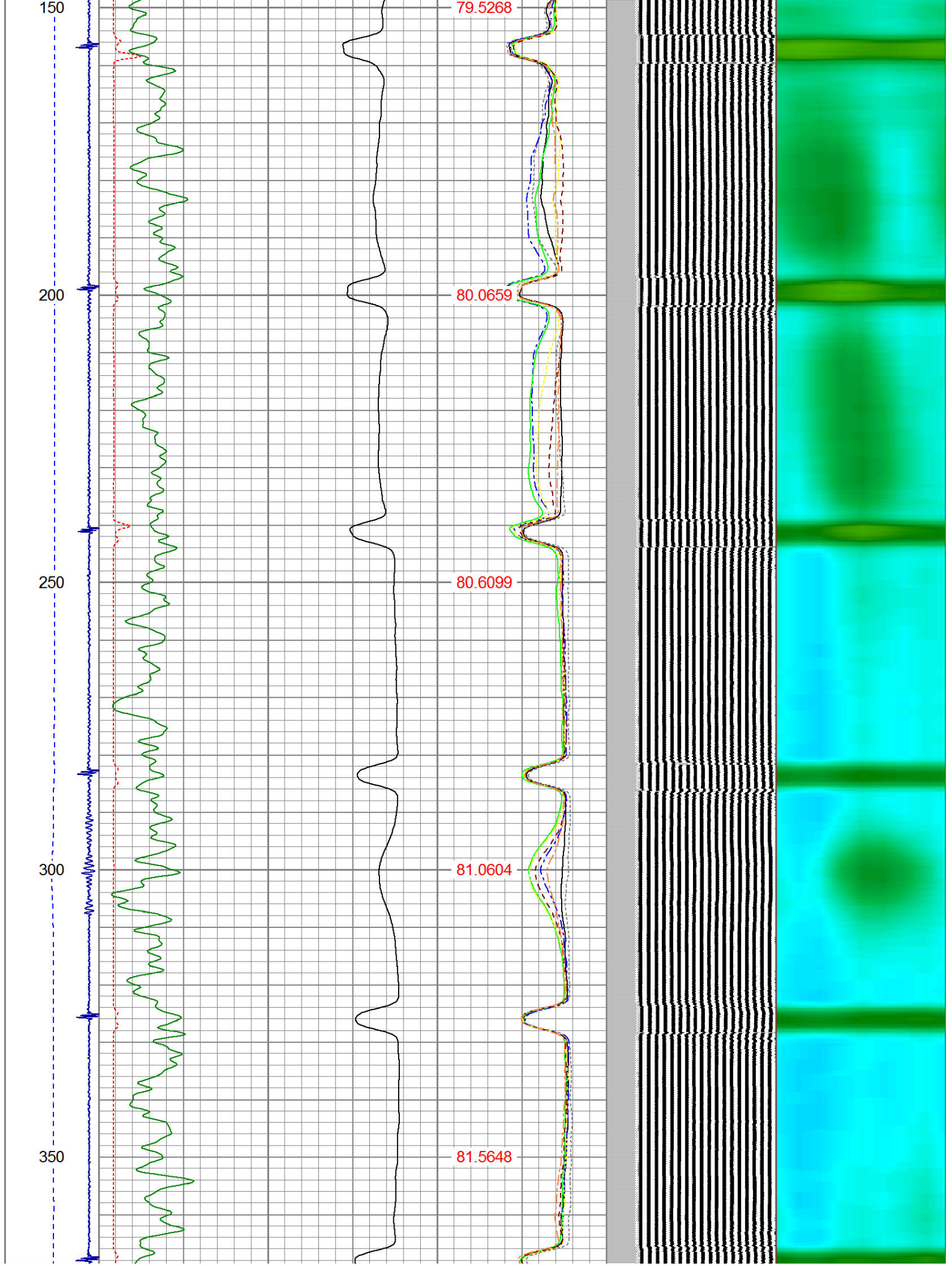
RAN CBL TO VERIFY CEMENT BOND
THANK YOU FOR USING WARRIOR !!!!!!!

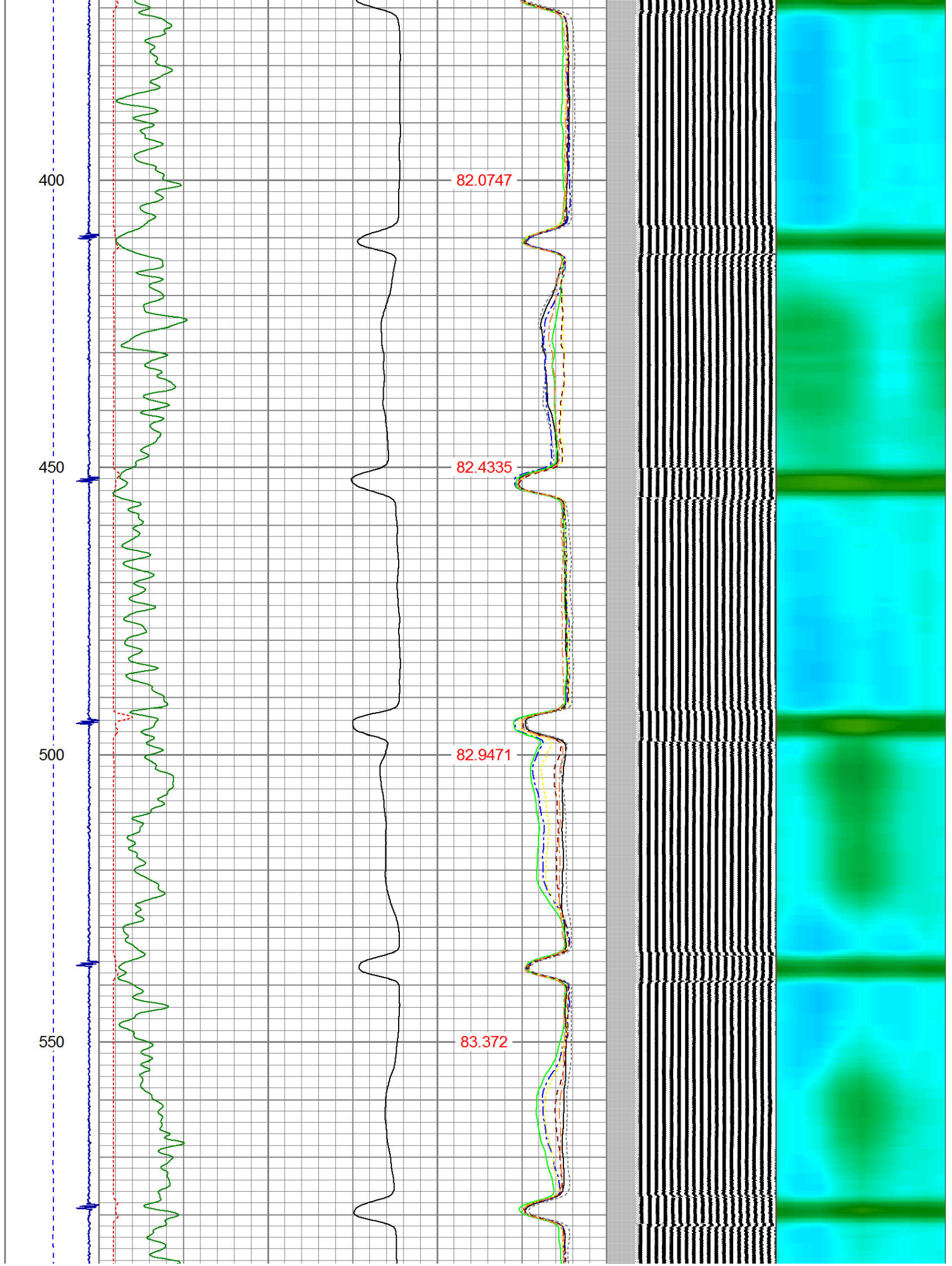
Sensor	Offset (ft)	Schematic	Description	Len (ft)	OD (in)	Wt (lb)
			1_4	1.00	1.36	5.00

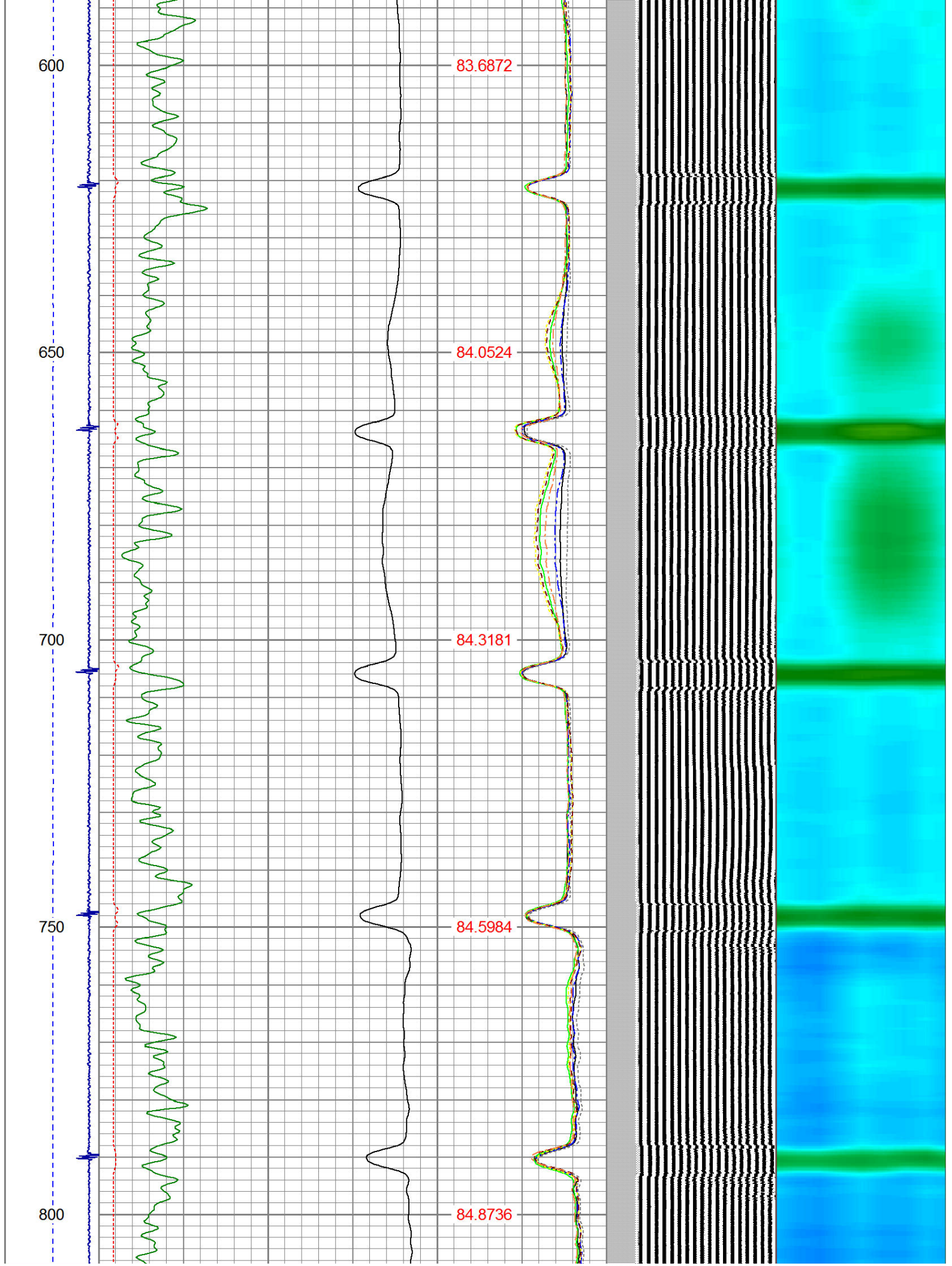
Tool Joint	Length (ft)	Weight (lb)	OD (in)	Tool Joint	Length (ft)	Weight (lb)	OD (in)
HEADVOLT	16.13			PTS275	2.83	2.75	
IntTemp	14.71						
WVFS3FT	11.46			RBT-Probe (Base)	8.92	2.75	90.00
WVFCAL	11.46			Probe Radii Bond Tool with Digital Telemetry			
WVFS1	11.46						
WVFS2	11.46						
WVFS3	11.46						
WVFS4	11.46						
WVFS5	11.46						
WVFS6	11.46						
WVFS7	11.46						
WVFS8	11.46						
WVFS5FT	10.46						
CNLSC	6.00			CNT-Probe_B (275)	2.88	2.75	40.00
CNSSC	5.17			6 bow centralizer			
CCL	3.64						
				GR-Probe (275)	4.33	2.75	30.00
GR	0.90			Probe 2.75"			
Dataset: dolph 33-1 (dir).db: field/well/run1/pass3 Total Length: 19.96 ft Total Weight: 165.00 lb O.D.: 2.75 in							

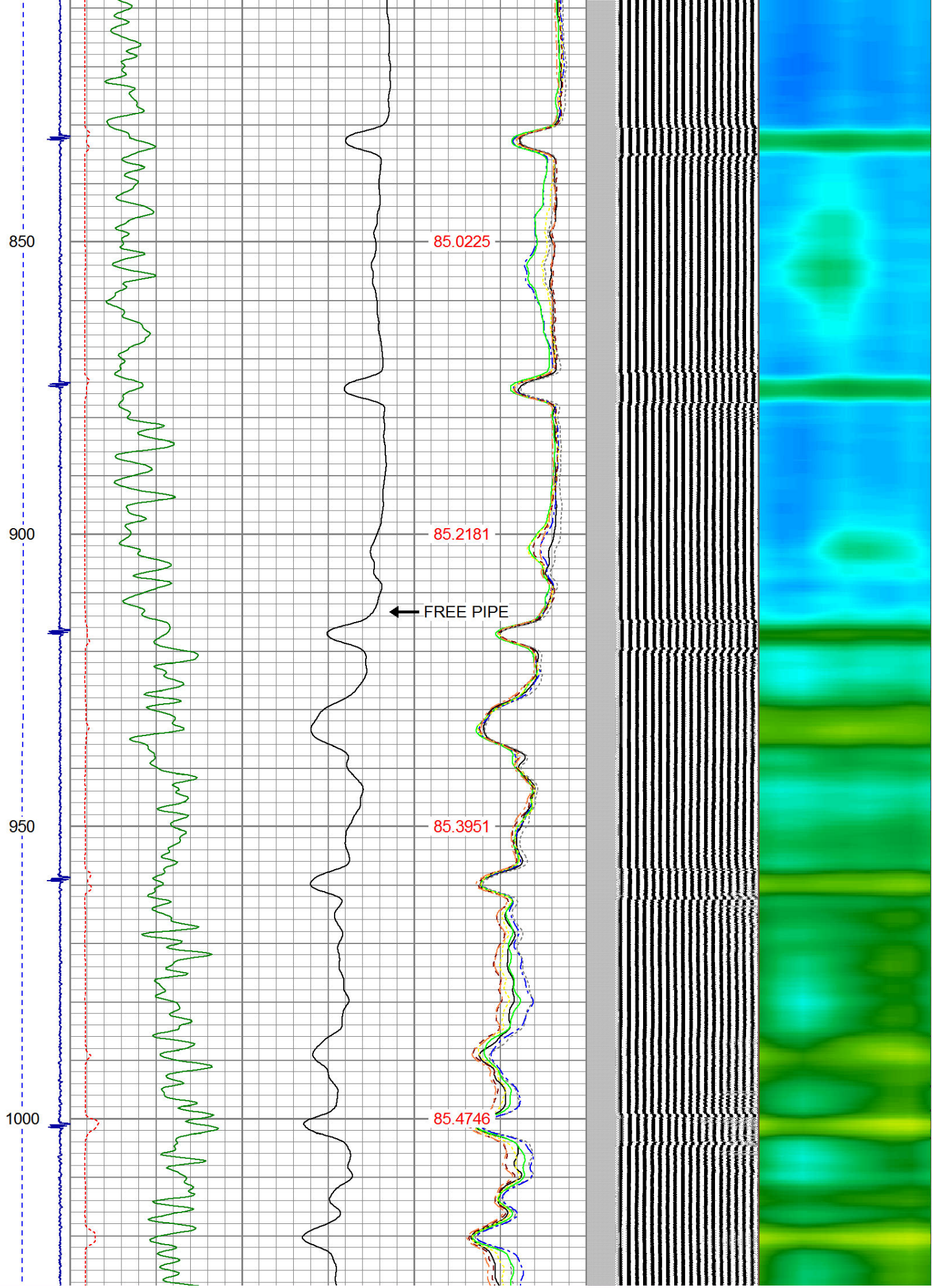
-9	CCL	1	200	TT (usec)	1000	0	AMP (mV)	100	0	AMPS1	100	200	VDL	1200	1	Cement Map	8
LSPD (ft/min)	0	250	0	GR (GAPI)	200	0	AMPx5 (mV)	20	0	AMPS2	100		1		1		100
			200	GR (GAPI)	400				0	AMPS4	100						
									0	AMPS5	100						
									0	AMPS6	100						
									0	AMPS7	100						
									0	AMPS8	100						
IntTemp (degF)																	











1050

1100

1150

1200

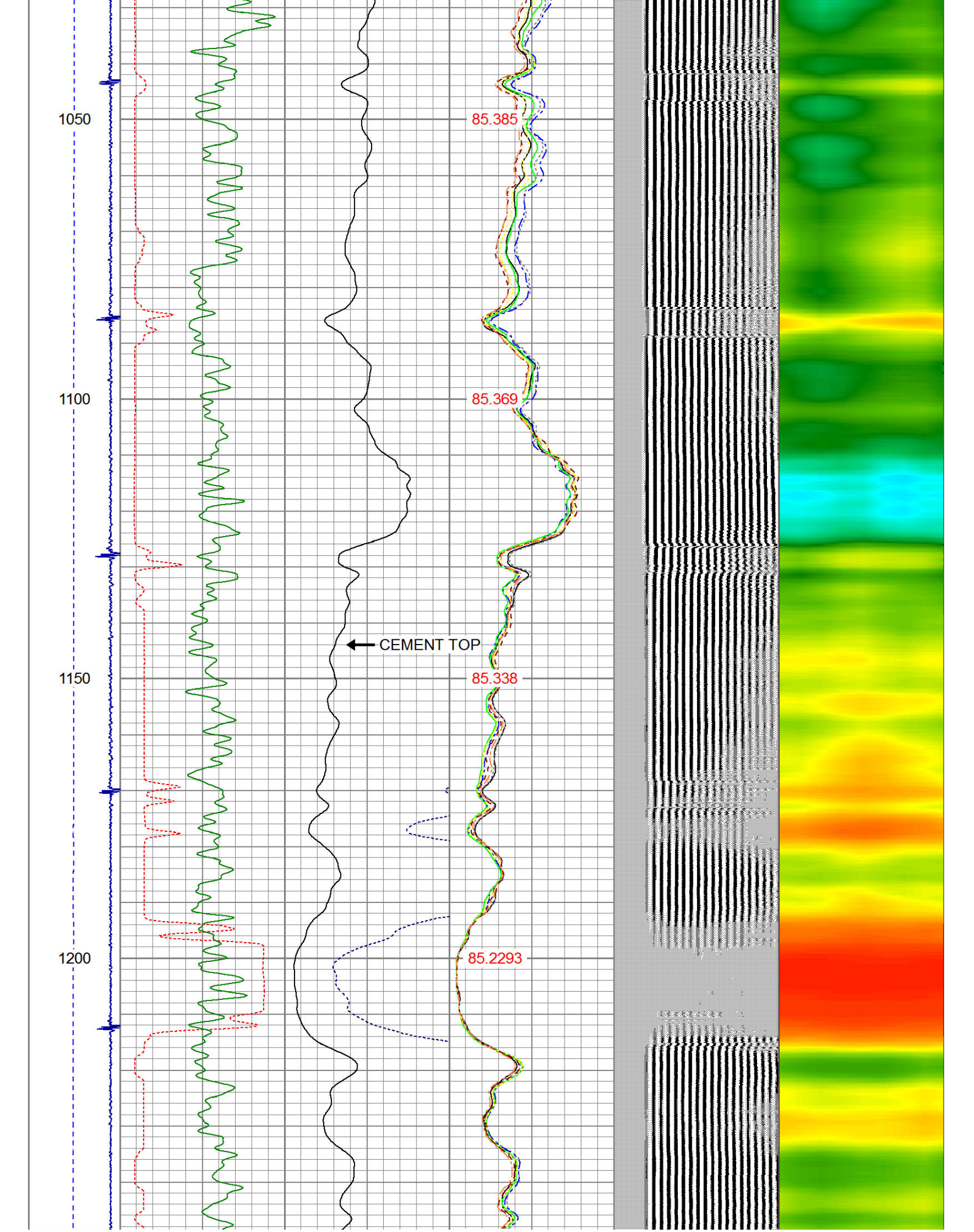
85.385

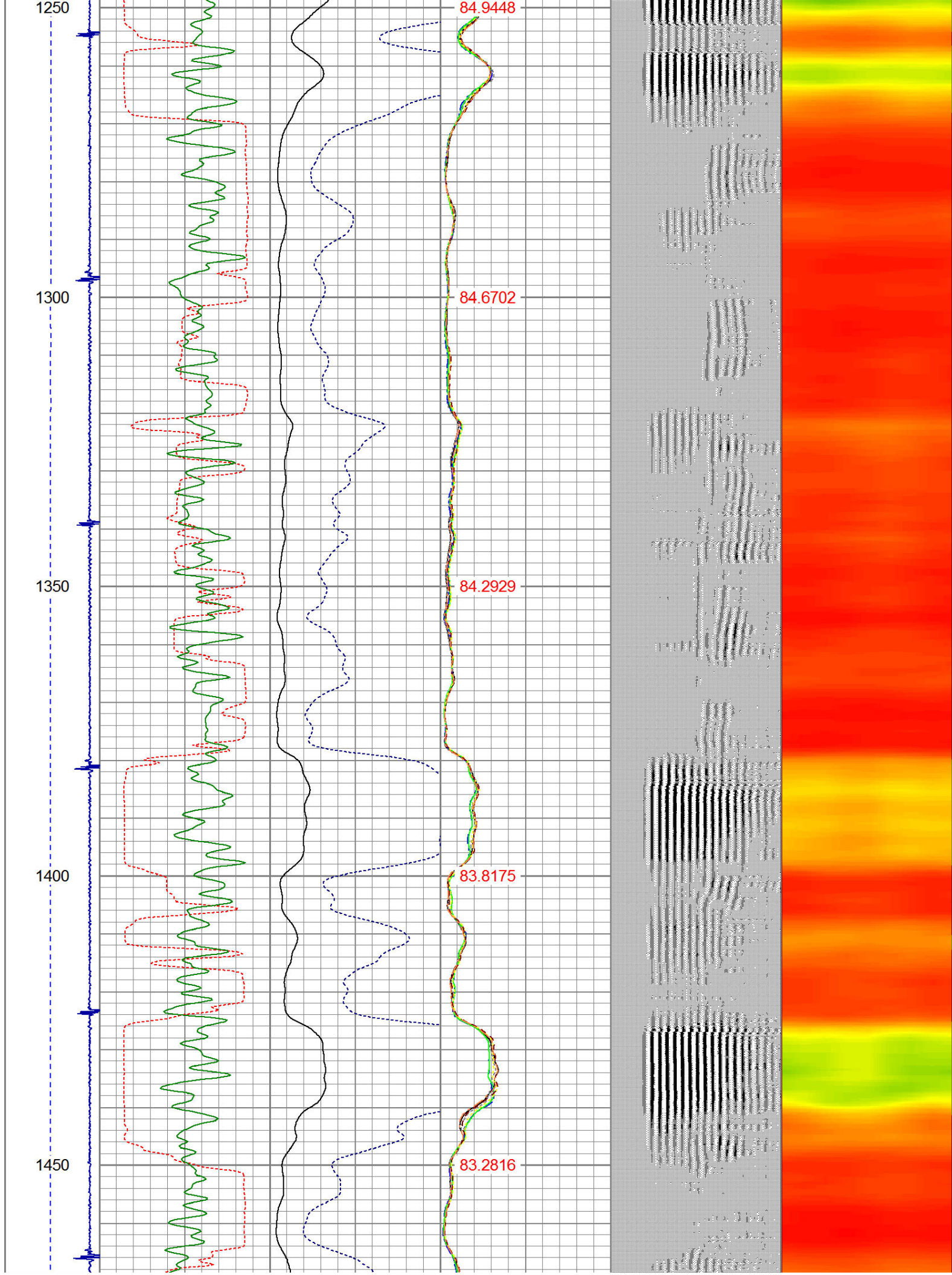
85.369

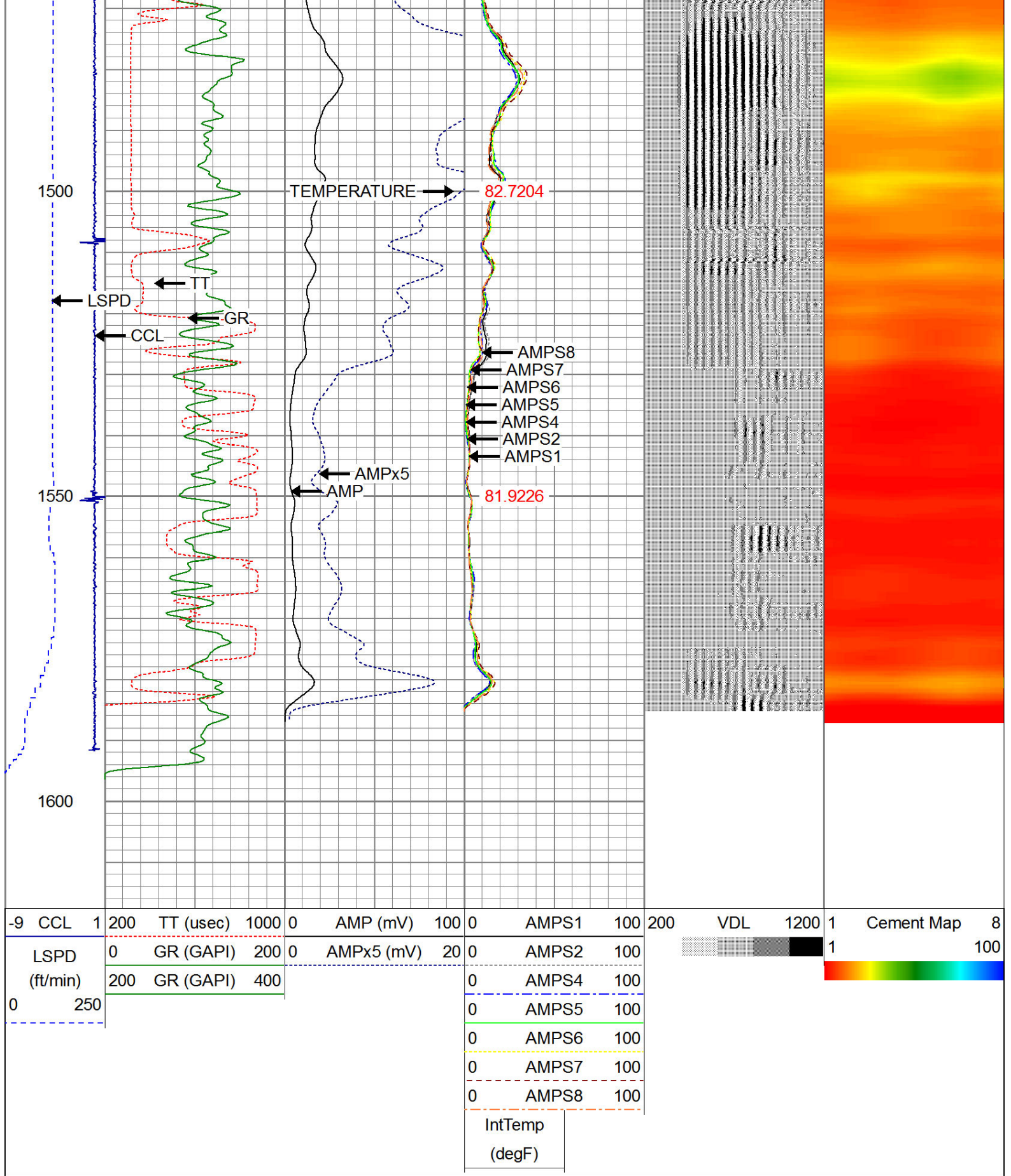
85.338

85.2293

CEMENT TOP

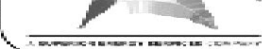






WARRIOR
ENERGY SERVICES

Company KERR McGEE OIL AND GAS
Well DOLPH 33-1 (DIR)
Field WATTENBERG
County WFLD



County WELD
State CO