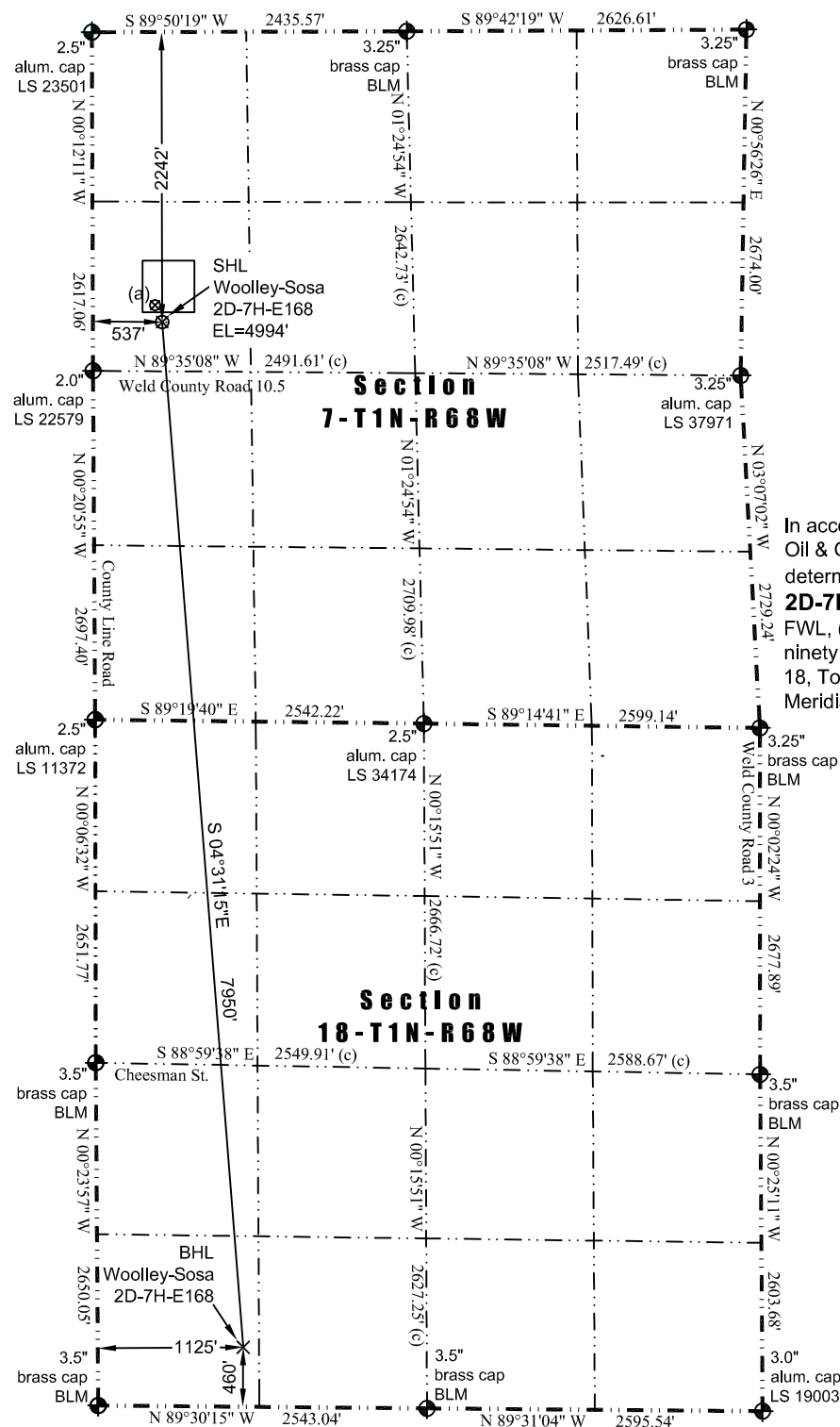




WELL LOCATION CERTIFICATE

THIS MAP DOES NOT REPRESENT A BOUNDARY SURVEY

Washburn Land Surveying
www.WashburnSurveying.com
970-232-9645



Scale 1" = 1400'
0 1400
approximate scale

LEGEND

- ◆ - found survey monument
- (c) - calculated dimension

(a) Existing Well Data:

Woolley 12-7
Latitude: N 40.067215°
Longitude: W 105.053746°
FNL: 2111'
FWL: 481'
ELEV: 4993'
PDOP: 2.0

In accordance with a request from Jay Knutson of EnCana Oil & Gas (USA) Inc., Washburn Land Surveying, LLC has determined the location of the **Woolley-Sosa 2D-7H-E168** well site to be SHL: 2242' FNL and 537' FWL, (BHL: 460' FSL and 1125' FWL), as measured at ninety (90) degrees from the section lines of Sections 7 and 18, Township 1 North, Range 68 West of the 6th Principal Meridian, Weld County Colorado.

Proposed Surface Hole Data:

Latitude: N 40.06855° (BHL: 40.045090°)
Longitude: W 105.053550° (BHL: 105.051454°)
PDOP: 1.7

Nearest:

Building Unit: 793' southeast
Building: 763' southeast
Above Ground Utility: 359' south
Public Road: 380' south
Railroad: 4,269' southeast
Property Line: 380' south
Well Window: SHL is 75' outside
High Occupancy Building Unit: 2,362' northwest
Existing Well: Woolley 12-7, 142' northwest

Notes:

- 1) Bearings and distances based on NAD 83 Colorado North State Plane Coordinate, using RTK GPS observations taken 5/13/14 by operator Chris Bettencourt.
- 2) Conversion factor to ground (1.0002793972).
- 3) Elevations based on NAVD 88 GPS heights and Geoid 2009 corrections.
- 4) See Location Drawing for visible improvements within 500 feet of Pad Site.
- 5) The surface use is a uncultivated field.

NOTICE: According to Colorado law you must commence any legal action based upon any defect in this W.L.C. within three years after you first discover such defect. In no event may any action based upon any defect in this W.L.C. be commenced more than ten years from this said date of the certification shown hereon.

I hereby certify that this Well Location Certificate was prepared by me or under my direct supervision on 9/24/2014 for and on behalf of EnCana Oil & Gas (USA) Inc. That it is not a Land Survey Plat or an Improvement Survey Plat and that it is not to be relied upon for establishment of fences, buildings, or other future improvement lines.

John Robert McGehee LS#38219
Well: Woolley-Sosa 2D-7H-E168 WLC