



Kerr-McGee Oil & Gas Onshore LP

A subsidiary of Anadarko Petroleum Corporation

1099 18th Street
Denver, CO 80202
720-929-6000

January 5, 2015

Matt Lepore
Director, Colorado Oil and Gas Conservation Commission
Department of Natural Resources
Oil and Gas Conservation Commission
The Chancery Building
1120 Lincoln St., Suite 801
Denver, CO 80203

Re: **30 Day Certification Letter - 318A-e**
RMF 31C-15HZ
Township 3 North, Range 68 West, Section 15: NE/4NE/4
Unit Acreage: 400
Unit Spacing: 03N-68W-14: W/2NW/4
03N-68W-15: N/2
Weld County, Colorado

Dear Director Lepore:

Kerr McGee Oil and Gas Onshore LP ("KMG") hereby certifies that KMG owns one hundred percent (100%) of the leasehold interest in the mineral rights in the proposed spacing unit. KMG hereby respectfully requests approval of this boundary well.

If you have any questions or issues regarding this permit, please contact Cheryl Light at (720) 929-6461.

Very truly yours,

KERR-McGEE OIL AND GAS ONSHORE LP

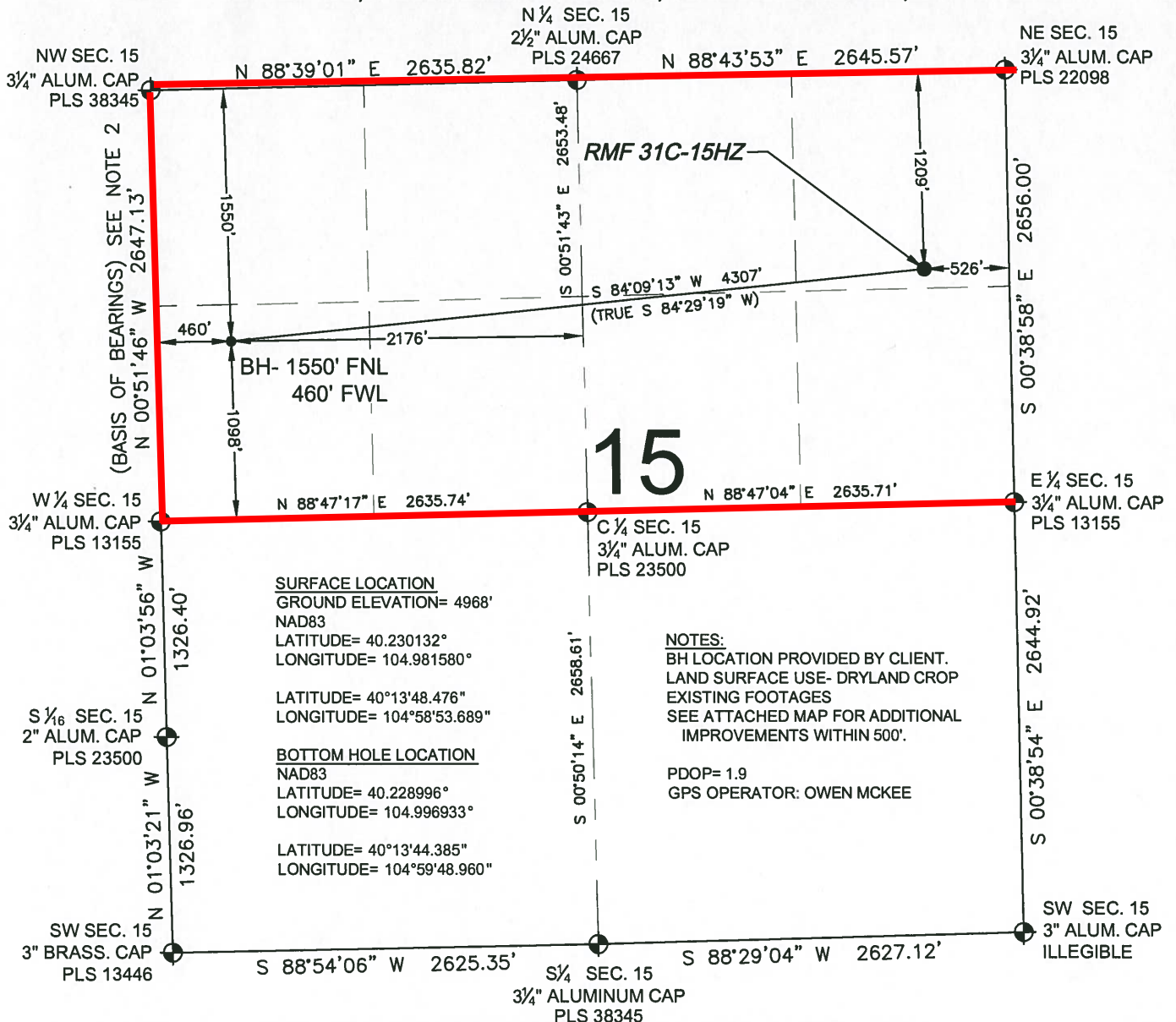
A handwritten signature in blue ink that reads 'Cheryl Light'.

Cheryl Light
Senior Regulatory Analyst

PROPOSED SPACING MAP

WELL LOCATION CERTIFICATE: RMF 31C-15HZ

SECTION 15, TOWNSHIP 3 NORTH, RANGE 68 WEST, 6TH P.M.



LEGEND

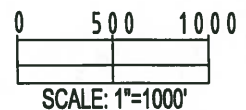
- = EXISTING MONUMENT ♦ = BOTTOM HOLE BH = BOTTOM HOLE
 ● = PROPOSED WELL ♦ = EXISTING WELL

NOTES:

- THIS FIELD SURVEY CONFORMS TO THE MINIMUM STANDARDS SET BY THE C.O.G.C.C., RULE NO. 215
- BEARINGS AND DISTANCES SHOWN HEREON ARE GRID AND BASED ON THE COLORADO STATE PLANE COORDINATE SYSTEM, NAD 83/2011 BETWEEN MONUMENTS AS LABELED HEREON AND ELEVATIONS SHOWN ARE NAVD 88, AS DERIVED BY GPS OBSERVATIONS.
- GRID DISTANCES ARE SHOWN, AS MEASURED IN THE FIELD, WITH TIES TO WELLS MEASURED PERPENDICULAR TO SECTION LINES.

I, BRADLEY L. LAMAN, A LICENSED PROFESSIONAL LAND SURVEYOR IN THE STATE OF COLORADO DO HEREBY CERTIFY TO **KERR-MCGEE OIL & GAS ONSHORE LP**, THAT THE SURVEY AND WELL LOCATION CERTIFICATE SHOWN HEREON WERE DONE BY ME OR UNDER MY DIRECT SUPERVISION AND THAT THE DRAWING SHOWN HEREON ACCURATELY DEPICTS THE PROPOSED LOCATION OF THE WELL. THIS CERTIFICATE DOES NOT REPRESENT A LAND SURVEY PLAT OR IMPROVEMENT SURVEY PLAT AS DEFINED BY C.R.S. 38-51-102 AND CANNOT BE RELIED UPON TO DETERMINE OWNERSHIP.

BRADLEY L. LAMAN, PLS 38345
COLORADO LICENSED PROFESSIONAL LAND SURVEYOR
FOR AND ON BEHALF OF P.F.S., LLC

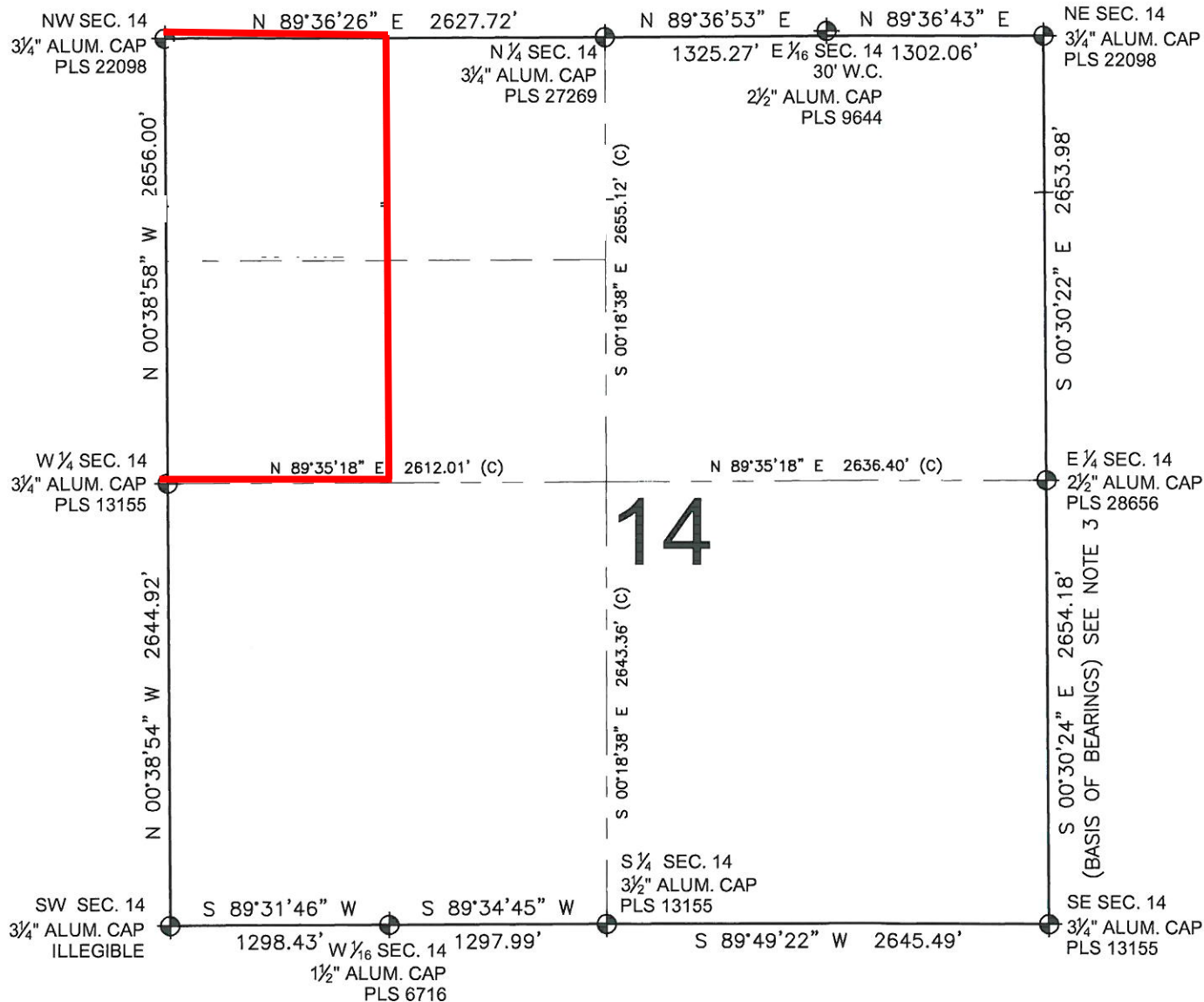


NOTICE: ACCORDING TO COLORADO LAW YOU MUST COMMENCE ANY LEGAL ACTION BASED UPON ANY DEFECT IN THIS SURVEY WITHIN THREE YEARS AFTER YOU FIRST DISCOVER SUCH DEFECT. IN NO EVENT MAY ANY ACTION BASED UPON ANY DEFECT IN THIS SURVEY BE COMMENCED MORE THAN TEN YEARS FROM THIS SAID DATE OF THIS CERTIFICATION SHOWN HEREON.

PREPARED BY: Petroleum Field Services, LLC 1801 W. 13th Ave. Denver, CO 80204	FIELD DATE:	SURFACE LOCATION:
	08-13-13	NE 1/4 NE 1/4,
	DRAWING DATE:	SEC. 15, T3N, R68W, 6TH P.M.
	08-20-13	WELD COUNTY, COLORADO
BY:	CHECKED:	
JAH	MLP	

PROPOSED SPACING MAP

SECTION 14, TOWNSHIP 3 NORTH, RANGE 68 WEST, 6TH P.M.



LEGEND

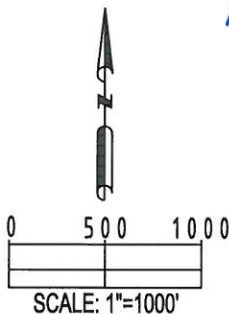
- ⊕ = EXISTING MONUMENT
- ⬤ = PROPOSED WELL
- BH = BOTTOM HOLE
- ⬥ = BOTTOM HOLE
- ⬧ = EXISTING WELL

NOTES:

- THIS FIELD SURVEY CONFORMS TO THE MINIMUM STANDARDS SET BY THE C.O.G.C.C., RULE NO. 215
- HORIZONTAL POSITIONS AND ORTHOMETRIC ELEVATIONS SHOWN AT THE WELL HEAD, ARE BASED ON GPS-RTK POSITIONS DERIVED FROM MINIMUM 2-HOUR STATIC OBSERVATIONS CORRECTED BY THE NATIONAL GEODETIC SURVEY ONLINE POSITIONING USER SERVICE, O.P.U.S. DATUM: HORIZONTAL = NAD83/2007, VERTICAL = NAVD88
- THE BASIS OF BEARINGS ARE STATE PLANE COORDINATE SYSTEM GRID BEARINGS SHOWN HEREON BETWEEN THE DESCRIBED MONUMENTS SHOWN HEREON.
- GRID DISTANCES ARE SHOWN, AS MEASURED IN THE FIELD, WITH TIES TO WELLS MEASURED PERPENDICULAR TO SECTION LINES.

SHEET 2 OF 2

PREPARED BY:	FIELD DATE:	SURFACE LOCATION:
PFS Petroleum Field Services, LLC 1801 W. 13th Ave. Denver, CO 80204	03-19-13	NE 1/4 NE 1/4,
	DRAWING DATE:	SEC. 13, T3N, R68W, 6TH P.M.
	06-19-13	
BY:	CHECKED:	WELD COUNTY, COLORADO
SMF	CLM	



MARK A. HALL, PLS 36073
COLORADO LICENSED PROFESSIONAL LAND SURVEYOR
FOR AND ON BEHALF OF P.F.S., LLC

NOTICE: ACCORDING TO COLORADO LAW YOU MUST COMMENCE ANY LEGAL ACTION BASED UPON ANY DEFECT IN THIS SURVEY WITHIN THREE YEARS AFTER YOU FIRST DISCOVER SUCH DEFECT. IN NO EVENT MAY ANY ACTION BASED UPON ANY DEFECT IN THIS SURVEY BE COMMENCED MORE THAN TEN YEARS FROM THIS SAID DATE OF THIS CERTIFICATION SHOWN HEREON.